



Ayrshire Roads Alliance

Winter Service Plan

For East Ayrshire and South Ayrshire Councils

2018/19



East Ayrshire Council
Comhairle Siorrachd Àir an Ear

south
AYRSHIRE
COUNCIL

INTRODUCTION

The Ayrshire Roads Alliance within the Department of Safer Communities is responsible for providing the winter service for East Ayrshire and South Ayrshire Councils. The remit includes:

- Establishing standards
- Establishing treatment priorities
- Day to day direction of operations
- Monitoring performance
- Liaison with adjoining Councils and Emergency Services

The Winter Service Plan was revised during the summer of 2015 to introduce the concepts and to follow the format provided in the code of practice 'Well Maintained Highways', which was updated in September 2013.

In addition, the Ayrshire Roads Alliance will follow advice from the SCOTS Winter Service Subgroup on the use and application of Appendix H: Winter Service issues.

There is additional and more detailed information available (within the Ayrshire Roads Alliance Quality Management System and the Severe Weather Operations Plan for resources involved with the management and implementation of this Winter Service Plan.)

The Winter Service Plan is reviewed annually and then amended and updated before 1 October to include any revisions and changes considered necessary and appropriate to the service delivery.

Document	Winter Service Plan 2018/19	Revision	0
WINT-1	Page 0 of 55	Date	08/11/2018

CONTENTS

1.0	Statement of Policies and Responsibilities	3
1.1	Statutory Obligations and Policy	3
1.2	Responsibilities	3
1.3	Decision Making Process	2
1.4	Arrangements with Adjacent Authorities	3
1.5	Resilience Levels	3
2.0	Quality	3
2.1	Quality Management Regime	3
2.2	Document Control Procedures	3
2.3	Distribution of Documents	3
2.4	Information Recording and Analysis	3
2.5	Arrangements for Performance Monitoring and Updating	4
3.0	Route Planning for Carriageway and Footway	4
3.1	General	4
3.2	Carriageways Routes for precautionary treatment	5
3.3	Carriageway Routes for post treatment	5
3.4	Carriageway Routes for snow clearance	5
3.5	Footway Routes for Precautionary Treatment	5
3.6	Footway Routes for Post Treatment	6
3.7	Routes for cycle route treatment	6
3.8	Response and Treatment Times for Carriageway Treatments	6
3.9	Response and Treatment Times for Footway and Cycle Route Treatments	6
3.10	Allocation of plant, vehicles, equipment and materials to routes	6
3.11	Location and maintenance of grit bins	6
3.12	Community self-assistance	7
4.0	Weather Prediction and Information	8
4.1	Forecasting, Patrols and other Decision Support Information	8
4.2	Information to be provided by Forecaster	8
4.3	Timing and distribution of information	8
4.4	Maintenance of ice detection equipment	9
5.0	Organisational Arrangements and Personnel	9
5.1	Organisation chart and employee responsibilities	9
5.2	Employee duty schedules, rotas and standby arrangements	9
5.3	Additional Resources	9
5.4	Training	10

Document	Winter Service Plan 2018/19	Revision	0
WINT-1	Page 1 of 55	Date	08/11/2018

5.5	Health and Safety Procedures	10
6.0	Plant, Vehicles and Equipment	10
6.1	Plant, Vehicles and Equipment	10
6.2	Location of Plant, Vehicles and Other Equipment	10
6.3	Garaging, servicing and maintenance arrangements	10
6.4	Contact and hire arrangements for Contract plant	10
6.5	Calibration Procedures	10
6.6	Fuel stocks and locations	11
7.0	Salt and De-Icing Materials	11
7.1	Location and capacity of stocks for salt and other materials	11
7.2	Testing arrangements	11
7.3	Loading arrangements	11
7.4	Pattern of spreading	11
7.5	Salt Spread Rates	11
7.6	Salt purchasing arrangements and supplies	12
8.0	Operational Communications	12
8.1	Technical systems information	12
8.2	Reporting arrangements and protocols	12
9.0	Information and Publicity	13
9.1	Local Press and broadcast information	13
9.2	Publicity	13
9.3	Other Key Local Contact Information	13
9.4	Records	13
9.5	Responsibilities and Guidance for Providing Information	13
	Appendix 1 Winter Service Organisation Chart	14
	Appendix 2 Grit Bin Policy & Requests	15
	Appendix 3 Request to Site a Grit Bin	16
	Appendix 4 Priority 1 Carriageway Gritting Routes - East Ayrshire Council	18
	Appendix 5 Priority 1 Carriageway Gritting Routes - South Ayrshire Council	39

Document	Winter Service Plan 2018/19	Revision	0
WINT-1	Page 2 of 55	Date	08/11/2018

1.0 Statement of Policies and Responsibilities

1.1 Statutory Obligations and Policy

Statutory Obligation

- 1.1.1 East Ayrshire and South Ayrshire Council have a statutory obligation under Section 34 of the Roads (Scotland) Act 1984 to prevent snow and ice endangering the safe passage of pedestrian and vehicles over public roads in terms of the above legislation a 'road' includes carriageways, footways and footpaths areas.

Policy

- 1.1.2 South and East Ayrshire Council's aim is to provide an effective and efficient Winter Service in accordance with 'Well Maintained Highways' and within the resources available to:-
- Allow the safe passage of vehicles and pedestrians
 - Minimise delays due to winter weather
 - Ensure operations are undertaken safely
- 1.1.3 The aim of the Winter Service Plan is to set out how the Winter Service will be provided within each Council roads network.

1.2 Responsibilities

- 1.2.1 The enabling and service delivery of the Winter Service is the responsibility of the Head of Service - Ayrshire Roads Alliance.
- 1.2.2 The Ayrshire Roads Alliance is responsible for the work involved in providing the Winter Service. These responsibilities include the following:
- Developing the Winter Service to cope with an 'average winter' but having the capability to be extended or adapted when winters are more severe or of a longer

- duration than average.
- Production and distribution of the Winter Service Plan.
- Review and update of the Severe Weather Operations Plan
- Providing accurate and timely information to the East Ayrshire Risk Management Centre and South Ayrshire Monitoring Station.
- Carrying out an annual review of the service and updating the Winter Service Plan where necessary.
- Liaising with adjacent roads authorities in the preparation of the Winter Service Plan to ensure continuity of service across boundaries.
- Providing a list of roads designated for priority treatment.
- Providing a list of footways and pedestrian areas designated for priority treatment.
- Providing a list of roads designated as strategic routes for snow clearing.
- Providing decision-making charts, advice and guidance for those involved in the Winter Service.
- Liaising with the Winter Supervisors to provide help and advice to ensure the service is delivered in the most effective, efficient and economical way, including establishing operational priorities during extreme weather conditions.
- Arranging for weather forecasts, ice prediction reports and road and weather monitoring information to be available throughout the winter period.
- Arranging for appropriate

Document	Winter Service Plan 2018/19	Revision	0
WINT-1	Page 3 of 55	Date	08/11/2018

- specialist vehicles and equipment to be available throughout the winter period.
- Arranging for supplies of salt to be available at the start of the overall winter period.
 - Monitoring the salt usage and ensuring supplies are replenished to maintain an appropriate level of salt in the stockpile.
 - Establish contact numbers for access to emergency services control rooms, public transport operators, local media and the motoring organisations.
 - Passing of factual information on road conditions to each Council's Communications Team as and when required.
 - Monitoring all aspects of the Winter Service and providing information on performance indicators.
 - Maintaining full and comprehensive records of all Winter Service activities.
 - Directing all available resources.
 - Liaising when necessary with the Road Weather Forecast Provider.
 - Monitoring the weather forecasts and actual weather conditions.
 - Monitoring actual road surface temperatures and road conditions.
 - Assessing the requirement to carry out precautionary or post salting treatment or snow clearance on the network, deciding appropriate start times and rates of spread and arranging for the work to be carried out, monitoring effectiveness of treatments and amending instructions, when necessary, due to a change in conditions.
 - Assessing the need to carry out post salting or snow clearance of the remaining road network during prolonged spells of sub-zero temperatures, and ensuring the works are carried out when necessary and as resources permit.
 - In the event of deteriorating conditions, notably major blockages to the primary route network and/or severe drifting snow to contact:
 - a) The Emergency Services Control Rooms. (Police, Ambulance, Fire)
 - b) Ayrshire Civil Contingency Team
 - c) Communications Team.
 - d) Chief Executive and/or other nominated Senior Officers.
 - Maintaining a list of contractors with suitable plant and operatives for snow clearing purposes and hiring in such when necessary to do so.
 - Liaising on operational matters when appropriate with the adjacent Local Authorities to ensure continuity of treatment across authority boundaries.
 - Liaising when appropriate with the
 - Emergency Services and Public Transport Operators.
 - Providing accurate and timely information to the Risk Management Centre and South Ayrshire Monitoring Station.
 - Ensuring the Transport workshops are notified of any vehicle faults and that they are repaired without delay.
 - Arranging with Transport workshops for appropriate staff to be available on 24 hour call out to deal with any

Document	Winter Service Plan 2018/19	Revision	0
WINT-1	Page 1 of 55	Date	08/11/2018

serious mechanical breakdown(s).

- Checking and calibrating salt spreading equipment and weighbridges and retaining of the certificates.
- Ensuring all operatives receive adequate and appropriate training in Winter Service activities and those drivers are issued with 'route cards' to record details of the treatment times, etc.

1.3 Decision Making Process

- 1.3.1 The day to day routine operational decisions will be made by the Winter Controller using weather forecasts provided by Weather Services Provider, and the road and weather monitoring data.
- 1.3.2 The Overall Winter Period shall be from 1st October until 15th May, with the Core Winter Period being from the fourth Monday of each October ending on the second Monday of April (these periods can be extended should conditions warrant).
- 1.3.3 On receipt of a weather forecast or update, the Winter Controller will reach a decision on action for the next 24 hours from one of the five following options.
- a) Pre-salting to commence immediately after the period of mobilisation.
 - b) Pre-salting to commence at a specified time (e.g. 1900 hours).
 - c) Treatment is likely-but start time cannot yet be determined.
 - d) Treatment is possible-conditions being monitored by patrol vehicles (marginal night).
 - e) No action planned (minimum forecast temperature + 1°C).
- 1.3.4 If treatment is planned the decision record will include the required salt spread rate. Any post salting or snow clearance subsequently required shall also be recorded. This decision and any updates will be distributed to appropriate roads personnel and stakeholders.

- 1.3.5 The Winter Decision Matrix is contained in the Severe Weather Operations Plan.
- 1.3.6 Post salting would be carried out under the following circumstances.
- a) On Priority 1 Routes where salt has been washed off due to rain.
 - b) Remaining roads may be treated by salting as determined by priority, progress, conditions and resources.
- 1.3.7 Snow clearing operations will be undertaken across the network as conditions dictate.
- 1.3.8 When snow is forecast, the precautionary routes will be treated in accordance with the Treatment Matrix in the Severe Weather Operations Plan.
- 1.3.9 Two stages of snow clearing can be considered
- a) Light falls of undisturbed accumulation of snow reaching a depth of less than 10mm in depth.
 - b) Moderate/Heavy falls of snow greater than 10mm in depth that may also be associated with drifting. Stage a) will normally be dealt with by one or more repeated applications of salt. Stage b) these conditions may require the use of ploughs, specialised equipment and/or mechanical excavators in addition to salting. As ploughing may block junctions and side roads, arrangements will be made to remove any resulting accumulations of snow, as resources permit.
- 1.3.10 Normal priority (when resources permit) will be to clear the snow from: Minimum Winter Network Routes (Snow Routes) then clear the remaining Priority 1 Routes before dealing with the Priority 2 and Priority 3 routes
- 1.3.11 Under extreme conditions the priority will be to clear and treat the Minimum Winter Network Routes (Snow Routes).

Document	Winter Service Plan 2018/19	Revision	0
WINT-1	Page 2 of 55	Date	08/11/2018

1.4 Arrangements with Adjacent Authorities

- 1.4.1 Reciprocal arrangements will be made with adjacent authorities to ensure the most efficient and consistent treatment of routes at boundaries, and co-operation in providing during winter service operations.
- 1.4.2A List of routes with reciprocal arrangements at Council boundaries is contained in the Severe Weather Operations Plan.
- 1.4.3 At the boundary of the Trunk Roads Network, Ayrshire Roads Alliance shall treat to the give way/ stop markings. The Trunk Road Operating Company shall treat the main trunk road carriageways, slip roads including lanes and splays at acceleration and deceleration lanes and splays.

1.5 Resilience Levels

- 1.5.1 Resilience Levels for salt stocks shall be as follows.
- 1.5.2 Resilience for the Overall Winter Period shall be a minimum of 8 days at heavy salting levels, equating to 4900 tonnes. Heavy salting is calculated as two treatments of the Priority 1 network and one treatment of priority 2 networks.
- 1.5.3 Resilience for December and January shall be increased to a minimum of 15 days at heavy salting levels, equating to 8,800 tonnes.
- 1.5.4 If stock levels fall below 4,900 tonnes, consideration will be given to introducing salt conservation methods in accordance with the Salt Resilience Plan (Severe Weather Operations Plan), this may include restricting treatment to the Minimum Winter Network Routes (Snow Routes) and the use of salt/ grit mixes.

2.0 Quality

2.1 Quality Management Regime

- 2.1.1 The Winter Service Plan and Severe Weather Operations Plan are included in the Ayrshire Roads Alliance Quality System.
- 2.1.2 The Ayrshire Roads Alliance Quality System is externally audited and verified.

2.2 Document Control Procedures

- 2.2.1 All quality documents are controlled and held on a computerised document management control system and are available for viewing by all members of Ayrshire Roads Alliance staff.
- 2.2.2 The Winter Service Plan will be distributed as detailed in section 2.3.
- 2.2.3 The Severe Weather Operations Plan document for use by Ayrshire Roads Alliance and will be updated at regular periods to suit operational requirements.

2.3 Distribution of Documents

- 2.3.1 The Winter Service Plan is issued and made available as listed below
 - Operational Staff
 - Elected Members
 - Ayrshire Civil Contingencies Team
 - Neighbouring Councils
 - Emergency Services and Community Planning Partners
 - Ayrshire Shared Services Joint Committee
 - Other Council Departments and Services
 - Community Councils
 - Equality Forum Group

2.4 Information Recording and Analysis

- 2.4.1 The Winter Service is contained within the Quality System as one process which contains three main procedures for Winter Preparation, Winter Action and Operations.
- 2.4.2 The Winter Preparation process

Document	Winter Service Plan 2018/19	Revision	0
WINT-1	Page 3 of 55	Date	08/11/2018

- includes the following
- a) Preparation of different categories of treatment routes
 - b) Training of personnel
 - c) Calibration of plant
 - d) Placing and maintaining of grit bins
 - e) Ordering an adequate supply of salt for the start of the Overall Winter period.
 - f) Allowing for additional resources should they be required for extreme conditions.
 - g) Liaison with external and internal partners.
- 2.4.3 The Winter Action process which includes the following.
- a) The decision making process for the Winter Controller.
 - b) Issuing of Instructions.
 - c) Distribution of Instructions.
 - d) Procedures for gritting and ploughing.
 - e) Response Times.
 - f) Monitoring and reporting of actions completed.
 - g) Maintaining an adequate supply of salt.

2.5 Arrangements for Performance Monitoring and Updating

- 2.5.1 Performance Monitoring
- 2.5.2 Ayrshire Roads Alliance evaluates and compares the following 5 local key performance measures for each winter period:-
- Percentage of vehicles ready for winter by 15th October
 - Percentage of pre-salted routes completed within 3 hours target time
 - Route efficiency
 - Actual winter expenditure per kilometre of Carriageway/per kilometre of gritted route.
 - Tonnage of salt used
- 2.5.3 These performance measures are reported on a regular basis to the Ayrshire Shared Service Joint Committee.
- 2.5.4 In addition Ayrshire Roads Alliance

submits an annual return to the Association for Public Service Excellence (APSE) on behalf of East and South Ayrshire Councils to compare Ayrshire Roads Alliance performance against other participating Councils.

- 2.5.5 The Winter Service Plan is reviewed annually and amended and updated before the 1st of October to include any revisions and changes to the service delivery.
- 2.5.6 The Quality System has been updated to the standard specified in ISO9001:2015 which includes the concept of monitoring and continuous improvement in line with the concepts of best value.

3.0 Route Planning for Carriageway and Footway

3.1 General

- 3.1.1 The pre and post salting routes of East and South Ayrshire are reviewed on an annual basis taking into account any alterations to the roads which are treated under the specified gritting criteria.
- 3.1.2 The main treatment options are as follows
- Precautionary pre salting
 - Post salting
 - Snow routes
- 3.1.3 Routes have been devised to ensure efficient coverage within reasonable timescales.
- 3.1.4 Sets of Route Cards listing all precautionary salting routes are held electronically by the Head of Service - Ayrshire Roads Alliance.
- 3.1.5 The Winter Treatment Matrix is contained in the Severe Weather Operations Plan.
- 3.1.6 Route descriptions for Priority 1 gritting route are available within

Document	Winter Service Plan 2018/19	Revision	0
WINT-1	Page 4 of 55	Date	08/11/2018

Appendix 4 and Appendix 5 of this document.

3.2 Carriageways Routes for precautionary treatment

3.2.1 The following roads will be treated if it is forecast that ice or snow is likely to be present on road surfaces.

Priority 1 – Strategic Routes and Main Distributor Routes, i.e. all 'A' class roads i.e. A70, A71, A77, A713, A735, A736, A759, A719, A714, A79 (This does not include for A77, A78, A76, M77 and a part of the A77 which are responsibility of the Transport Scotland). Safe and reliable access to emergency facilities including fire and rescue, police, ambulance services and hospitals. Other public services (Schools, health centres etc.) access to towns and villages, routes with high percentage of school traffic, designated public transport routes, access to main industrial and business centres.

3.2.2 The duty Winter Controller has authority to amend agreed treatments should updated forecasts or conditions make this necessary. Where changes in the expected weather are forecast the duty Winter Controller will contact the Winter Supervisors and instruct them to take the necessary action. All such changes will be recorded in the electronic MANAGER System.

3.3 Carriageway Routes for post treatment

3.3.1 Given the presence of ice or snow on roads and a forecast that these conditions will last for a period longer than it would take to treat the roads, appropriate treatment may take place, at any time, to cover the following: -

a) Priority 2 routes to be treated as resources permit when sub-zero temperatures are forecast to continue

to last beyond midday, following completion of Priority 1 routes.

Priority 2 – Secondary distributor roads, including B class roads not included on Priority 1 routes, local distributor roads in residential areas.

b) Priority 3 Routes will be treated as resources permit when sub-zero conditions are forecast to continue over an extended period.

Priority 3 – Local access roads in residential and industrial areas, minor rural through roads and C class roads not included on priority 1 or priority 2 routes. Other roads with restricted access, cul-de-sac etc. not treated during post salting actions will be treated as resources permit utilizing available and suitable special plant.

c) Reported trouble spots not treated during precautionary treatment, or requests for assistance from emergency services or social services, as resources permit.

3.4 Carriageway Routes for snow clearance

3.4.1 At any time the priority is as follows

a) While snow is still falling, only the Minimum Winter Network Routes (Snow Routes) will be ploughed and treated in order to target resources and to keep these routes open for traffic.

b) After snow has stopped falling but is lying, the remaining Priority 1 precautionary routes will be ploughed and treated before commencing Ploughing and treatment on Priority 2 and Priority 3 routes as resources and conditions permit.

c) Additional resources to be called out to plough and treat Priority 2 and Priority 3 routes after snow has stopped or when conditions warrant

3.5 Footway Routes for Precautionary Treatment

3.5.1 The following footways will be considered by the Head of Service – Ayrshire Roads Alliance for treatment if it is forecast that ice or snow is likely to

Document	Winter Service Plan 2018/19	Revision	0
WINT-1	Page 5 of 55	Date	08/11/2018

- be present on road surfaces or where surfaces are wet, with temperatures forecast to remain below zero until 10.00 the next working day.
- a) Priority 1 - Urban shopping areas and precincts. And other areas or pedestrian concentration, and where applicable within the Priority 1 footway route safe and reliable footway access to emergency facilities including fire and rescue, police, ambulance services and hospitals, and other public services (Schools, health centres etc.).
- 3.5.2 Priority 1 footways will only be treated as resources permit.

3.6 Footway Routes for Post Treatment

- 3.6.1 The following footways will be treated if it is forecast that ice or snow is likely to be present on road surfaces, with temperatures forecast to remain below zero over a prolonged period.
- a) Priority 2 – Main access routes to town and village centres, special needs of disabled people or older people where critical footway access is required. (Residential homes etc.). Known problem areas including significant gradients. Exposed areas and other topological areas.
 - b) It is not possible with the resources to treat all of the footways. Ayrshire Roads Alliance encourages self-help through the placing of Community grit bins and other grit bins throughout the roads network and when requested, resources to community groups.

3.7 Routes for cycle route treatment

- 3.7.1 Road cycle routes will be treated along with the adjacent carriageway when resources permit. No treatment will be carried out on off-road cycle routes.

3.8 Response and Treatment Times for Carriageway Treatments

- 3.8.1 When ice is predicted to be present during the morning peak traffic flow (prediction from the previous evening’s forecast) precautionary salting of routes should be completed

- in 3 hours from the start of treatment and before 08:00 hours.
- 3.8.2 For Emergency Salting and Ploughing the time between the decision to start treatment and the start of treatment will be no more than one hour except where pre-planned gritting is scheduled.

3.9 Response and Treatment Times for Footway and Cycle Route Treatments

- 3.9.1 Priority 1 footway routes should be completed in 5 hours from start of treatment and before 10:00 hours.
- 3.9.2 Priority 2 footway routes will be instructed for treatment as and when resources permit.
- 3.9.3 On-road Cycle Routes will be treated with the adjacent carriageway as resources permit.
- 3.9.4 Where resources permit ad hoc visual footway route inspections will be undertaken and footway treatments will commence on instruction.

3.10 Allocation of plant, vehicles, equipment and materials to routes

- 3.10.1 The road network is serviced by three Roads Depots located at Galston, Coylton, and Girvan.
- 3.10.2 The necessary resources are stored and located within these depots to treat the designated networks carriageway routes.
- 3.10.3 The treatment of the networks footway routes shall be undertaken by Ayrshire Roads Alliance Internal Roads Maintenance Units, East Ayrshire Councils Outdoor Services and by private Contractors.

3.11 Location and maintenance of grit bins

- 3.11.1 Approximately 729 grit bins are sited locally within the network, for self-help by the public, these bins are topped up on a monthly basis as required, and as resources permit. The number of grit bins and their locations are continually under review and the current Grit bins

Document	Winter Service Plan 2018/19	Revision	0
WINT-1	Page 6 of 55	Date	08/11/2018

locations are available as noted on Ayrshire Roads Alliance web page.

- 3.11.2 Grit bins will only be placed at locations where the criteria within the grit bin policy (Appendix 2) are met within the network, Community grit bins are available to encourage self-help and are located within town and village Centre's. These bins will be topped up on a monthly basis as required and as resources permit. The number of Community grit bins and their locations are presently under review and the current Community Grit bins locations are available on Ayrshire Roads Alliance web page.

3.12 Community self-assistance

- 3.12.1 To provide assistance and improve footway treatment resilience, Ayrshire Roads Alliance will work with local Community Groups and others. The Alliance will provide training, salt materials, footway spreading equipment and appropriate PPE for Groups to undertake treatments within their local Areas. Requests for these resources should be made in writing to the Head of Service.

Document	Winter Service Plan 2018/19	Revision	0
WINT-1	Page 7 of 55	Date	08/11/2018

4.0 Weather Prediction and Information

4.1 Forecasting, Patrols and other Decision Support Information

- 4.1.1 The support information for use in 'Decision Making' will usually be a combination of the Road Weather Forecast, Road and Weather Monitoring Data and Patrolling of the network.
- 4.1.2 Ayrshire Roads Alliance have contracted a Weather Service Provider to supply forecasts for the network each day over the period 1st October to 15th May.
- 4.1.3 The road weather forecasts are provided via a computer link to Ayrshire Roads Alliance during the normal working day or a portable computer to the Winter Controller out with normal hours.
- 4.1.4 Should any problems exist with the computer systems for obtaining the weather forecast alternative arrangements are in place
- 4.1.5 Four Ice Detection Outstations are installed near Corwar, Dalmellington, Dunlop and Fenwick. In addition the Alliance has access to a further 7 Outstations on the Trunk Road Network and access to information from the stations is available to the Winter Controllers.
- 4.1.6 The data available from the outstations, which can be presented in both graphic and tabular format include:
 - a) Road surface temperature
 - b) Deep road temperature
 - c) Air temperature
 - d) Wind speed and direction
 - e) Relative humidity
 - f) Precipitation.
 - g) Surface state (including level of salt present on road surface)
- 4.1.7 The Weather Service Provider has direct access to the information from these outstations, which Improves the accuracy of their forecasts.

4.2 Information to be provided by Forecaster

- 4.2.1 Specification of Forecasts
Three forecasts are provided to Ayrshire Roads Alliance daily at 07.00, 12.00 and 19.00 (including weekends). Each forecast details the expected weather and road conditions for the forthcoming 36 hour period and contains the following information
 - i) Details and confidence of hazards from Ice, Hoar Frost, Snow, Fog, Strong Wind and Rain,
 - ii) Wind speed and direction, road state, and snow depth accumulations.
 - iii) A 2-10 day forecast of expected hazards of Ice, Hoar Frost, Snow, Fog, Strong Wind and Rain with comments on the outlook.
- 4.2.2 The Weather Service Provider carries out 24 hour monitoring of conditions and if these vary significantly they will contact the Winter Controller directly to advice of the change and when appropriate will issue an updated forecast.
- 4.2.3 The Weather Service Provider provides a 24 hour consultancy service for the Winter Controller for advice and clarification of forecasts.

4.3 Timing and distribution of information

- 4.3.1 The Winter Controller will receive the main weather forecast each day between the hours of 12:00 and 13:00 and will assess and consult on the forecast and any other relevant data and decide what action to take, if any. An instruction will then be issued to the relevant staff and external bodies detailing the action proposed.

Each morning at 7:00am and each evening at 19:00 the duty Winter Controller will assess the latest forecast and make adjustments (if

Document	Winter Service Plan 2018/19	Revision	0
WINT-1	Page 8 of 55	Date	08/11/2018

- considered necessary) to the current plan for the next 12- 24hour period. All decisions are recorded within an electronic MANAGER system and are available to relevant staff at all times.
- 4.3.2 If the weather changes out with these times the Weather Service Provider will contact the Winter Controller directly with a revised forecast.
- 4.3.3 Any amendment made to previous instructions after an update from the Weather Forecast Provider, either by phone or during the evening update will be passed to the Winter Supervisors immediately and the appropriate records updated.

4.4 Maintenance of ice detection equipment

- 4.4.1 Maintenance and service arrangements are in place for outstations and the appropriate repairs.

5.0 Organisational Arrangements and Personnel

5.1 Organisation chart and employee responsibilities

- 5.1.1 The organisation of staff for Winter Service is shown on Appendix 1.
- 5.1.2 Employee Responsibilities
- 5.1.3 The Winter Controller is responsible for monitoring the road and weather conditions, for reaching an appropriate decision on treatment of the network and informing Winter Supervisors and others responsible for overseeing the works and recording the decision.
- 5.1.4 The Winter Supervisor is responsible for utilising and managing effectively all resources under his control i.e. labour, plant and materials to effect swift treatment of the road network. He/she will also complete all relevant paperwork timeously and update and record any alterations to decisions made.

- 5.1.5 The Depot Management Teams will ensure adequate resources are available for the supervisor to undertake his duties efficiently with regard to performance indicators.
- 5.1.6 The Winter Service Operatives are responsible for undertaking gritting duties in a safe and efficient manner. He/she shall complete all relevant paperwork for submission to the Winter Supervisor.
- 5.1.7 All personnel involved in the Winter Service will acquaint themselves of the duties, responsibilities and working procedures necessary for them to carry out their tasks in an effective and efficient manner.
- 5.1.8 The contact details and numbers are listed below.
- a) During Normal Working Hours:
Risk Management Centre
03457 24 0000
Ayrshire Roads Alliance
01563 503160
South Ayrshire Monitoring Station
0300 123 0900
- b) Out with normal working hours
Risk Management Centre
03457 24 0000
South Ayrshire Monitoring Station
0300 123 0900

5.2 Employee duty schedules, rotas and standby arrangements

- 5.2.1 Special arrangements will be made to ensure the availability of trained and competent operatives and supervisory staff for the Overall Winter Period
- 5.2.2 A weekly rota system is in operation for the Winter Controllers, Winter Supervisors and Winter Service Operatives.

5.3 Additional Resources

- 5.3.1 During severe weather conditions the Head of Service - Ayrshire Roads Alliance may augment resources from other East Ayrshire Council Departments and/or private contractors using the externally procured Winter Maintenance Assistance Contract.

Document	Winter Service Plan 2018/19	Revision	0
WINT-1	Page 9 of 55	Date	08/11/2018

- 5.3.2 Labour rates will be agreed with these departments and interested private contractors prior to the onset of the winter period.
- 5.3.3 All contractors will supply a list of contact numbers to provide when available resources, on a 24 hours a day and 7 days a week basis.
- 5.3.4 Contractors will attend a Winter Service Presentation in all aspects of Health and Safety in respect to the winter service operations before being accepted as suitable service providers.

5.4 Training

- 5.4.1 Winter Controllers and Winter Supervisors will undertake Forecast and Treatment training as provided by the Weather Service Provider.
- 5.4.2 Winter Supervisors and Winter Service Operatives will receive training on all aspects of their duties including a familiarization exercise with all plant and procedures before the onset of the Overall Winter Period.
- 5.4.3 All Winter Service Operatives will either have an SVQ certificate in Winter Maintenance or be working towards achieving one.

5.5 Health and Safety Procedures

- 5.5.1 The Head of Service - Ayrshire Roads Alliance is responsible for the Health, Safety and Welfare for staff.
- 5.5.2 During winter service operations, drivers/ operatives must adhere to the following health and safety documentation:
 - East Ayrshire Council Health and Safety Policy
 - Departmental Health and Safety Policy Statement
 - Health, Safety and Welfare at Work Employee Handbook
 - Activity/Risk Assessments for Individual Activities
 - Compliance with EAC Health, Safety and Welfare standards.

6.0 Plant, Vehicles and Equipment

6.1 Plant, Vehicles and Equipment

- 6.1.1 The availability of vehicles and ancillary equipment is detailed in the Severe Weather Operations Plan.
- 6.1.2 The current fleet replacement program will ensure that Winter Service obligations can be met. Programmed repairs and servicing to the fleet will be carried out during the summer months. The remainder of the fleet will be inspected and serviced as per the Fleet Management Inspection and Servicing Schedule.
- 6.1.3 Global Positioning System (GPS) tracking equipment is installed in vehicles to provide accurate control of gritting and to establish accurate treatment records.

6.2 Location of Plant, Vehicles and Other Equipment

- 6.2.1 Ayrshire Roads Alliance vehicles will operate from the three Road Depots located at Galston, Coylton, and Girvan.

6.3 Garaging, servicing and maintenance arrangements

- 6.3.1 Mechanics will be available on an out-of-hours rota to maintain and repair the dedicated salting vehicles and equipment.

6.4 Contact and hire arrangements for Contract plant

- 6.4.1 Contract and hire companies on the East Ayrshire framework contracts will be solely hired. Only in extreme weather and emergencies conditions will other private contract and hire companies be considered.
- 6.4.2 During severe weather conditions the Head of Service - Ayrshire Roads Alliance may increase resources from other East Ayrshire Council Departments and private contractors.

6.5 Calibration Procedures

- 6.5.1 Pre-winter checks and calibration on all vehicles, plant and equipment, used by Ayrshire Roads Alliance for Winter Service provision will be

Document	Winter Service Plan 2018/19	Revision	0
WINT-1	Page 10 of 55	Date	08/11/2018

carried out by the 1st October and confirmation of their readiness to the Head of Service - Ayrshire Roads Alliance will be made by the Operations Manager. An additional calibration for winter vehicles will be undertaken during mid-season and before 31st January.

- 6.5.2 Transport Services will ensure that the controls of all spreading equipment are calibrated and clearly marked for specified rates of spread up to a maximum of 40g/m².
- 6.5.3 Salt is the principal de-icing agent used in the Roads Network and should be supplied in compliance with BS3247 (2011).
- 6.5.4 The original copies of road salt test certificates, weighbridge certificates and vehicle and equipment calibration shall be kept as part of the Ayrshire Roads Alliance Quality System to allow both internal and external auditing.

6.6 Fuel stocks and locations

- 6.6.1 Fuel stocks for the dedicated salt spreading and other vehicles being used for winter maintenance operations are provided at Galston Depot, Coylton Depot, Girvan Depot and Transport Depot, Crookedholm. The vehicles will remain topped up ready for immediate use. Standard East Ayrshire Council fuelling arrangements apply. Fuel stocks are remotely monitored by Transport Services on a regular basis and orders placed to ensure fuel resilience during extreme weather conditions.

7.0 Salt and De-Icing Materials

7.1 Location and capacity of stocks for salt and other materials

- 7.1.1 Salt will held in salt barns at Galston Depot, and Coylton Depot and externally stored at Girvan Depot.
- 7.1.2 The combined quantity of salt held in stock at the start of October will be a

minimum of 12,800 tonnes. The minimum stock level will be 4,900 tonnes, rising to 8,800 tonnes in December and January (to cover the holiday period) based on level of resilience as recommended in the United Kingdom Roads Liaison Group (UKRLG) review of February 2009.

- 7.1.3 Calibrated weighbridge systems for stock control and salt usage purposes, are available at the three Roads Depots.
- 7.1.4 The depots will supply regular reports on salt usage to the Operations Manager who will monitor usage and place supplementary orders for salt as required.

7.2 Testing arrangements

- 7.2.1 Salt for use during winter will meet the requirements of BS 3247 'Salt for Spreading – Coarse Rock Salt'. On request of the Head of Service – Ayrshire Roads Alliance, salt materials will be tested when delivered to confirm compliance with the specification. An additional mid-season testing of depot salt materials will be undertaken.

7.3 Loading arrangements

- 7.3.1 Depot Managers are responsible for ensuring a loading shovel is available for loading the salting vehicles. A 'backup unit', in case of breakdown of the primary loading shovel should be available at the depot at all times during the Overall Winter Period.

7.4 Pattern of spreading

- 7.4.1 The gritters are to be set to salt a width of carriageway which will be both lanes of single carriageways or both lanes of one side of a dual carriageway.
- 7.4.2 The gritter will generally travel in the left hand lane and the spreading pattern will be set to cover both lanes unless multiple passes are required on a wide one way road.

7.5 Salt Spread Rates

- 7.5.1 The variable nature of winter conditions makes it difficult to define exact treatments and salt

Document	Winter Service Plan 2018/19	Revision	0
WINT-1	Page 11 of 55	Date	08/11/2018

7.5.2 applications. Guidance on appropriate spread rates is given in the winter treatment matrix in the Severe Weather Operations Plan. Sustained low temperatures occur only rarely. In this event however, account will be taken of the need to increase the rate of spread of salt. Below -11°C the action of salt is ineffective and other measures will be required e.g. introducing salt/grit mixtures.

7.6 Salt purchasing arrangements and supplies

- 7.6.1 Ayrshire Roads Alliance is a member of the Scotland Excel consortium of local authorities for the purchase of winter salt. The tender includes for the main delivery of salt to the three Roads Depot Facilities before the start of winter and also includes for further deliveries of salt, upon request, to replenish the stockpiles as necessary.
- 7.6.2 Other Council Departments
- 7.6.3 Other Council Services and Stakeholders must make their own provision for treatment of areas out with the limits of the public road network, which are not the responsibility of the Ayrshire Roads Alliance.
- 7.6.4 Supply of salt to others
- 7.6.5 No salt purchased by Ayrshire Roads Alliance will be available for purchase by external parties.

8.0 Operational Communications

8.1 Technical systems information

- 8.1.1 Good communications are essential to ensure speedy and effective response to winter conditions.
- 8.1.2 The Winter Controllers and Winter Supervisors will be issued with mobile phones with access to the internet and internal email systems.
- 8.1.3 Treatment plans and timings, ongoing actions, alterations to plans

and salt usage will be recorded within electronic MANAGER system. This web-based system will be accessible by all Winter Controllers and Supervisors. All information is archived by the software supplier, and is held remote from the Council network.

- 8.1.4 During salting and snow clearance operations each Winter Operative has access to a mobile phone to maintain contact with Winter Supervisors and the operations depot.
- 8.1.5 All Vehicles are fitted with a Tracker and GPS system which allows the sections of road which have been treated to be clearly identified along with a time of treatment.

8.2 Reporting arrangements and protocols

- 8.2.1 The Winter Controller will report the 'Daily Decision' to the appropriate roads personnel and stakeholders as soon as possible after it has been reached.
- 8.2.2 The standard method of distributing the information will be via electronic MANAGER system.
- 8.2.3 On request, the Winter Supervisor will prepare a daily report on the previous 24 hour road conditions and treatments, any ongoing treatments and salt usage for the Head of Service - Ayrshire Roads Alliance. The report will be required by 0845 hours daily Monday – Friday.
- 8.2.4 The Winter Supervisors will record details of salt usage via the electronic MANAGER system and supply separate information regarding vehicle, equipment and plant breakdowns and repair actions taken.
- 8.2.5 The Winter Supervisors will report details such as all additional plant and labour etc., hired from other Departments or Contractors, as soon as practical, to the Winter Controller.
- 8.2.6 During prolonged spells of severe conditions a decision will be made whether to set up a manned 24 hour

Document	Winter Service Plan 2018/19	Revision	0
WINT-1	Page 12 of 55	Date	08/11/2018

control centre. This operational centre will be based at Gauchalland Depot. When required a Strategic Centre will be based at the Risk Management Centre who can as required liaise with South Ayrshire Monitoring Station.

- 8.2.7 Throughout the treatment period, Winter Supervisors will continue to report and update to the Winter Controller on operational progress and actions taken during snow clearing operations and dealing with prolonged spells of ice.

9.0 Information and Publicity

9.1 Local Press and broadcast information

- 9.1.1 It is important that the general public is aware of and understands Ayrshire Roads Alliance approach to the Winter Service. Publicity is to be given before the beginning of the Core Winter Period describing the level of service provision and contact points.
- 9.1.2 During the Overall Winter Period and particularly during prolonged spells of snow and ice information will be made available to the public by the Communications Team via
- Press releases
 - Local Radio Stations
 - East and South Ayrshire Intranet / Web Site
 - Motoring organizations
- 9.1.3 The Head of Service - Ayrshire Roads Alliance is authorised to respond to the Press, Radio and Television on matters relating to local road conditions.

9.2 Publicity

- 9.2.1 General advice and information for the public concerning the Winter Service will be catered for by publishing a Winter Advisory leaflet which will be available to the public via Ayrshire Roads Alliance and at selected locations throughout the

Roads Network, such as libraries etc.

9.3 Other Key Local Contact Information

- 9.3.1 For information only The Head of Service - Ayrshire Roads Alliance will inform the Police Force Control and Ayrshire Civil Contingency team when snowfalls in excess of 30mm are predicted.
- 9.3.2 Reports from the Police or Risk Management Centre or South Ayrshire Monitoring Station of dangerous road conditions will be acted on as soon as practicable, when resources are available.
- 9.3.3 The Head of Service - Ayrshire Roads Alliance will consult the Police and advise the Risk Management Centre and South Ayrshire Monitoring Station when any road is closed due to winter weather conditions.
- 9.3.4 The Risk Management Centre and South Ayrshire Monitoring Station are responsible for dealing with the general public's telephone inquiries regarding the Winter Service. The Risk Management Centre has access to electronic MANAGER system and other key information regarding winter service operations to enable an efficient response to public enquiries.
- 9.3.5 Risk Management Centre is in operation 24 hours a day, 7 days a week, and can be contacted on 0345 724 0000. South Ayrshire Monitoring Station is in operation 24 hours a day, 7 days a week, and can be contacted on 0300 123 0900

9.4 Records

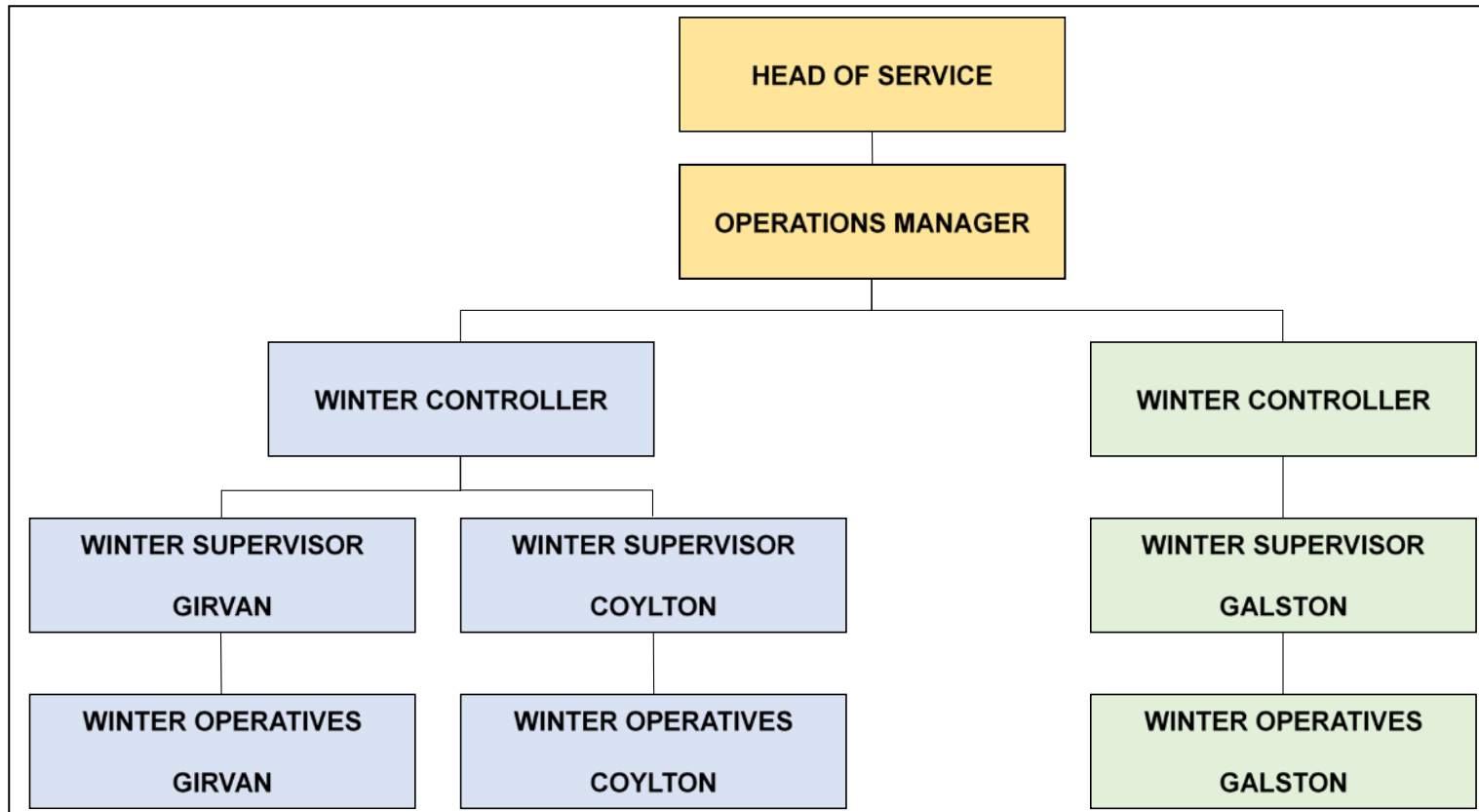
- 9.4.1 Records will be retained by Ayrshire Roads Alliance for 3 years and retained in archives for a further 7 years.

9.5 Responsibilities and Guidance for Providing Information

- 9.5.1 The Head of Service - Ayrshire Roads Alliance is responsible for guidance of the information to be supplied.

Document	Winter Service Plan 2018/19	Revision	0
WINT-1	Page 13 of 55	Date	08/11/2018

Appendix 1 Winter Service Organisation Chart



Document	Winter Service Plan 2018/19	Revision	0
WINT-1	Page 14 of 55	Date	08/11/2018

Appendix 2 Grit Bin Policy & Requests

- 1) Ayrshire Roads Alliance shall provide grit bins for self-help by members of the public. These shall be sited locally in accordance with this policy.
- 2) The location of Community grit bins and other grit bins will be recorded in an electronic database, and are available on the Ayrshire Roads Alliance website.
- 3) Grit bins shall only be located where the following criteria are met:
 - a) The location is not on a precautionary carriageway route;
 - b) The gradient is greater than 1 in 15, or at a junction with a known history of accidents;
 - c) The location shall not obstruct the passage of pedestrians, a minimum of 1.5m clearance on the footway is required;
 - d) The location shall not obstruct sight lines;
 - e) The location is not within 200m of another grit bin location.
 - f) The location is within an urban area.
 - g) The location is within the boundary of the public road. The Ayrshire Roads Alliance will not provide grit bins in private areas or car parks for internal use by either the Council or any other public or private property such as schools, parks, hospitals, old people's home etc. unless a service level agreement is in place.
- 4) Grit bins will only be located where they can be filled from a lorry. The grit bins shall be replenished at the start of the Winter Period and on a monthly cycle during the Winter Period, as resources permit.
- 5) Grit bins will generally be left in place during the summer months, unless there is a history of vandalism at a particular location.
- 6) Requests for salt bins must be in writing using the application form which is also available to download from the Ayrshire Roads Alliance website.

A request will not be accepted unless a location to site the grit bin has been agreed. Therefore, even if the criterion for locating a grit bin is met, none will be provided if the adjacent residents cannot agree a position.

Document	Winter Service Plan 2018/19	Revision	0
WINT-1	Page 15 of 55	Date	08/11/2018

Appendix 3 Request to Site a Grit Bin

1. Proposed Location

1.1 Street Name _____

1.2 Location _____

2 Checklist

	Yes	No		Yes	No	Roads Check
Steep Gradient			Location within Urban Area			
Footway Wider than 1.8m			Location on Public Road			
Location outwith junction visibility splay			More than 200m from nearest grit bin			

3 Application

This application is submitted on behalf of

Organisation _____

Name _____

Address _____

Date _____

Request Granted: Yes No

Reason for Refusal (if applicable) _____

Instruction issued to provide grit bin Yes No Date _____

Signed _____

Neighbour Notification

The following neighbours have been consulted and have no objections to a grit bin being placed at this location.

Name	Address	Date	Agreement Y/N	Signed

Appendix 4 Priority 1 Carriageway Gritting Routes - East Ayrshire Council

Gauchalland Depot in Galston operates eight Priority 1 Carriageway gritting routes, mainly but not exclusively, confined to the north of the Council area; and includes the major towns of Kilmarnock and Cumnock.

Meadowhead Depot in Coylton operates two eight Priority 1 Carriageway gritting routes for the East Ayrshire area, mainly in the south of the Council area; and includes the major towns of Dalmellington and New Cumnock.

Method

Acting on advice received from the Council's weather service provider, Priority 1 Carriageway routes will receive precautionary treatment prior to the onset of frost / ice.

Included within the Priority 1 Carriageway routes are all A class and B class roads and strategic C class and unclassified roads.

Roads which meet the Council's criteria of precautionary treatment applied to a minimum of one road servicing council schools, and emergency service depots, plus roads servicing high concentrations of employment, commercial outlets and densely populated residential areas and other roads of strategic importance are also included.

The exception to this arrangement is when the Council's weather service provider advises that there is no risk of hazardous winter road conditions in any of the two climatic domains. In this event altered routes which exclude roads in a particular climatic domain are used.

A small number of roads within residential areas may be partly treated in order to optimise a predetermined routing system.

Document	Winter Service Plan 2018/19	Revision	0
WINT-1	Page 18 of 55	Date	08/11/2018

Gauchalland Depot – Priority 1 Carriageway Gritting Route 1 EAST AYRSHIRE COUNCIL		
Town /Village	Road Number	Description
Galston	A719	A719 from Depot to Brewlands St Galston
Galston	-	Bridge St Galston Polwarth St Galston
-	A71	A71 Roundabout
	A719	A719 to Moscow A719 to Waterside A719 to A77
	A77	A77 to B764 Eaglesham Moor Rd
	A719	A77 from junction A719 to B778
	B778	B778 to Stewarton
Stewarton	-	Loudoun St Stewarton Holm St Stewarton Vennal St Stewarton Rigg Rd Stewarton
	A735	A735 Dunlop Rd
		Clerkland Rd
	A735	A735 to Dunlop
	A735	A735 Lugton
	A735	A730 Junction
Dunlop	-	Allanvale Dunlop Kirkland Rd Dunlop Main St Dunlop Newmill Road Dunlop C7 Dunlop Kirkland Rd Dunlop Dunlop Junction on B706 A736 Junction
Stewarton	B778	B778 to Stewarton Dalry Rd Stewarton Standalane to junction Lainshaw St Stewarton
	A735	A735 to B769 B769 to Dykehead
	C20	C20 Irvine Rd
Crosshouse to Gatehead	B751	B751 Sunnyside B751 Crosshouse B751 Gatehead

Gauchalland Depot – Priority 1 Carriageway Gritting Route 1 EAST AYRSHIRE COUNCIL (Continued)		
Town /Village	Road Number	Description
	A759	A759 to B7064 Junction A759 Dundonald Road Dundonald Rd to junction at st marnock St Access to Crosshouse Nursery (Annandale Gardens) Loudoun Academy Car Park (morning patrol)
		Return to depot

Gauchalland Depot - Priority 1 Carriageway Gritting Route 2 EAST AYRSHIRE COUNCIL		
Town /Village	Road Number	Description
Kilmarnock	A735	A735 Queens Drive Kilmarnock Asda Roundabout Kilmarnock Victoria Roundabout Kilmarnock Wellbeck St Kilmarnock Old Mill Rd Kilmarnock Fowlds St Kilmarnock Kings St Kilmarnock St Marnock St Kilmarnock John Finnie St Kilmarnock West George St Kilmarnock Portland St Kilmarnock Witch Rd Kilmarnock Hill St Kilmarnock Kilmaurs Road to A735 through Kilmaurs to Main St Stewarton
Stewarton		Main St Stewarton B769 Lainshaw St Stewarton Main St Stewarton High St Stewarton Dean St Stewarton Old Glasgow Rd Stewarton Windy-Yett EAC boundary
	U24	Cairn Road (U24)
	C108	C108 to Fullwood C108 to Newmill House Junction C7
	C7 C7	C7 to Neilston Boundary C7 to Clerkland Road return to C7 A735 Junction
Stewarton		Lamberton Rd Ravenscraig Rd Kilwinning Rd Rigghead Rd Braemore Rd Kirkmuir Drive Kingaussie Avenue Elgin Avenue Kinloch Avenue junction of Dalry Rd Sim St

Gauchalland Depot - Priority 1 Carriageway Gritting Route 2 EAST AYRSHIRE COUNCIL		
Continued		
Town /Village	Road Number	Description
		Lothian Rd Crusader Crescent David Dale Avenue Cutsburn Rd Pokelly Place Cutsburn Rd Jubilee Drve Cairnduff Place School Robertland Rigg Old Mill View Bowes Rigg Alisa View Junction Dunlop St New St Avenue St Springwell Place Bridgend
	C117	C117 to B751 Junction C117 to A735
Kilmarnock		John Walker Drive Dean Lane High St
		Bellfield Roundabout slip and off slip on to A71 Riccarton Road Avenue Square morning patrol Stewarton Car Park & Ride morning patrol
		Return to Depot

Gauchalland Depot - Priority 1 Carriageway Gritting Route 3		
Town /Village	Road Number	Description
Hurlford	B7037	B7037 to Hurlford Cross A71 Riccarton Road to Bellfield Interchange
Kilmarnock	B7038	Hurlford Rd to junction Carron Avenue Hurlford Rd Campbell St roundabout B7038 Campbell St Ayr Rd Spittallhill Farm entrance Campbell St Low Glencairn St West Shaw St McClelland Drive South Hamilton St Portland Rd Irvine Road B7081 junction of Munro Avenue Western Rd Roundabout at junction of Hill St Western Rd Bonnyton Rd Bonnyton Rd C24 West Langlands St Green St Hill St Witch Rd Western Rd B7064 Glasgow Rd B7038 Roundabout Southcraig Avenue Roundabout at Flotta Place Glasgow Rd Dalmusternock Roundabout Fenwick South Roundabout
	B7061	
Fenwick		Main Road Fenwick B778 Stewarton Rd B778 to Roundabout A77 junction

AYRSHIRE ROADS ALLIANCE EAST AYRSHIRE COUNCIL AREA		
Town /Village	Road Number	Description
	B751	B751 to Kilmaurs
	C75	C75 Kirkton Road (morning)
		Creashaugh Rd (morning)
Kilmarnock		Kilmaurs Rd Altonhill Avenue Kilmaurs Rd Tourhill Rd Onthank Drive junction Onthank Drive Meiklewood Rd junction Meiklewood Rd Craufurdland Rd junction Craufurdland Rd Jura Rd Inchmurrin Rd Fetlar Drive Benbecula Rd Cumbrae Drive Davaar Drive Inchmurrin Drive Western Rd Hill St Garden St Soulis St Union St Wellington St Dean St Beansburn Glasgow Rd Inchmurrin Drive Jura Rd Craufurdland Rd Western Rd Hareshaw Drive Meiklewood Rs Amlaird Rd Wardneuk Drive Hareshaw Gardens Wardneuk Drive

AYRSHIRE ROADS ALLIANCE EAST AYRSHIRE COUNCIL AREA

Town /Village	Road Number	Description
Kilmarnock		Western Rd junction Wardneuk Drive Onthank Drive junction Meiklewood Rd Kirkton Rd Tourhill Rd Bus terminus junction Onthank Drive Knockinlaw Rd Western Rd Inellan Drive Campbeltown Drive Dean Rd South Dean Rd B7082 Grassyards Rd Roundabout exit Strawberry Bank Dean Lane Grassyards Rd B7082 to Junction A719 Return to depot Waterside St Car Park (morning) Foregate North (morning) Foregate South (morning) Portland St Car Parks (morning) Onthank PS (morning) Kirkstyle PS (morning)

Gauchalland Depot - Priority 1 Carriageway Gritting Route 4 EAST AYRSHIRE COUNCIL

Town /Village	Road Number	Description
Galston	A719	Gauchalland Depot A719 Orchard St Titchfield St
	A71	A71 junction A71 roundabout A71 Newmilns A71 Darvel A71 Stoneyford Farm
Darvel		Kirkland Rd Patterson Terrace Hutchinson Drive Campbell St East Campbell St Burn Rd East Main St Jamieson Rd to Primary School gates Jamieson Rd to East Main St A71 to Fleming St Fleming St Edith St Dublin Rd to A71
Newmilns		Mill Rd Ladeside Greenhead Greenside East Strand Campbell St West Campbell St King St A71 junction High St Drygate St Hillside Place U32 Borebrae U32 Huggincraig Rd Clearmount Avenue Mair St Bridgend Brown St Windyhill Rd Nelson St

Gauchalland Depot - Priority 1 Carriageway Gritting Route 4 EAST AYRSHIRE COUNCIL (Continued)		
Town /Village	Road Number	Description
Galston		Wallace St
	B7037	To B743
Mauchline	B743	To Mauchline Cross Jean Armour Drive Carrick View Beechwood Rd
	C35	C35 Tarbolton Rd
	B744	To A719
Galston		Cross St Riverside Rd Western Rd Meadowside Rd Glebe Rd Cemetery Rd Wallace St Barr St Return to depot
		Priestland bus turning area(bad weather forecast) Newmilns London Rd & Greenside Car Parks (&morning patrol) Galston Primary School drop off Western Rd (morning patrol) Galston Henrietta St car park (morning patrol) Darvel Primary School access Jamieson Rd (morning patrol)

Gauchalland Depot - Priority 1 Carriageway Gritting Route 5 EAST AYRSHIRE COUNCIL		
Town /Village	Road Number	Description
Galston		Portland Rd Standalane
Hurlford		A71 Hurlford Cross (Circle RA) Main Rd Crookedholm Grougar Rd
Kilmarnock		London Rd Sturrock St Armour St High Glencairn St East Shaw St junction East Shaw St Roundabout Bentinck St James Little St Titchfield St Portland St South Hamilton St Irvine Rd B7081 Haining Avenue Whatriggs Rd New St Hurlford Rd Kinlock Rd Lammermuir Rd Treeswoodhead Rd Wyvis Rd Dungavel Rd Tinto Avenue Loudoun Avenue Campsie Rd
Kilmarnock		Methven Avenue Roundabout Rathlin Avenue Central Avenue Shortlees Rd Loreny Drive Knockmarloch Drive Roundabout exit Langside Avenue Blacksyke Avenue Knockmarloch Drive Blacksyke Avenue

**Gauchalland Depot - Priority 1 Carriageway Gritting Route 5 EAST AYRSHIRE COUNCIL
Continued**

Town /Village	Road Number	Description
Kilmarnock		Central Avenue Burnpark Rd Roundabout on Caprington Avenue Loreny Drive
	C8	C8 to junction Main St
Craigie		Craigie Village to Junction C119
	C119	Junction C8
Kilmarnock		Caprington Avenue Central Avenue Ayr Rd Cunninghame Drive Darnley Drive Stonyhill Avenue Elderslie Crescent Bruce St Witchknowe Rd Turnberry Drive Portland St Hill St Garden St Green St Car Park and Bus Station Holehouse Rd Culzean Crescent London Rd Walker Avenue Alloway Avenue Samson Avenue Mackinlay Place Nursery Avenue New Mill Rd Grassyards Rd Strawberry Bank South Dean Rd Kennedy Drive Sutherland Drive McDonald Drive MacCallum Place MacPhail Drive MacNaughton Drive

Gauchalland Depot - Priority 1 Carriageway Gritting Route 5 EAST AYRSHIRE COUNCIL Continued		
Kilmarnock		MacKellar Place MacKenzie Drive MacPhail Drive Well Park Avenue
	C33	C33
Moscow		Moscow
Galston		Loudoun Avenue Holms Rd Neville Drive Holms Rd to Depot
Kilmarnock		CAR PARKS: (MORNING PATROLS) West George St Sturrock St East Sturrock St West Queens St Fowlds St St Marnock St Titchfield St Princess St EAC London Rd

Gauchalland Depot - Priority 1 Carriageway Gritting Route 6 EAST AYRSHIRE COUNCIL		
Town /Village	Road Number	Description
	A719	To A76 Junction
	A71	A71 Dual C/way Moorfield RA B7064 Roundabout
	B7081	B7081 Crosshouse Roundabout Hospital Roundabout
	B7081	B7081 to Springside Boundary
	U16	U16 Thornton Rd
	A759	A759 Gatehead
	B7064	B7064 Roundabout
Kilmarnock		Dumfries Drive Neephill View
	B7064	B7064 to Irvine Rd RA B7081
	A71	A71 to Dreghorn Roundabout Moorfield
	A71	A71 Moorfield Roundabout Bellfield Interchange
Kilmarnock		Queen's Drive Hurlford Rd Campbell St Roundabout A71 on ramp A71 off ramp Campbell St Bentinck St Brewery Rd Lawson St Dick Rd Rennie St Elmbank St Elmbank Avenue Dick Rd Beech Avenue Roundabout Beech Avenue Pine Rd Hazel Avenue Hawthorn Square

**Gauchalland Depot - Priority 1 Carriageway Gritting Route 6 EAST AYRSHIRE COUNCIL
Continued**

Town /Village	Road Number	Description
Kilmarnock		Willow Rd Cedar Rd Olive Rd Grange Terrace Annanhill Avenue Bonnyton Rd Munro Avenue Munro Place Fullarton St Portland Rd Grange St Park St North Hamilton St Strand St Nelson St Grange Place Croft St Langlands St Old Irvine Rd Woodstock St Woodstock Place Sandbed St Bank St John Dickie St Mount Avenue Holms Rd Aird Avenue Barbadoes Rd Burnside St Holmquarry Rd Old Rd
Kilmarnock		Blair Avenue Union St Academy St Cessnock Rd Liffnock Avenue Richardson Avenue Mayfield Avenue Craigie Rd Kerrmuir Avenue Dumleyhill Drive Return to Depot

Gauchalland Depot - Priority 1 Carriageway Gritting Route 7 EAST AYRSHIRE COUNCIL		
Town /Village	Road Number	Description
	A70	A70 Cumnock to Cronberry to Riverside Gardens Cronberry A70 to South Lanarkshire Boundary
	B743	B743 Muirkirk to South Lanarkshire Boundary (turn at layby)
Muirkirk		Burn Ave Muirkirk Wellwood St Kirk Green Furnace Rd Henderson Dr Millar Rd Stitt Pl Pagan Walk
	B743	B743 to junction B7037
Mauchline		B743 from junct B7037 to Junct Mary Morrison Dr Mauchline
	B705	B705 to A76
		Station Rd to corner turn
	B705	B705 to Junction B713 Catrine
	B713	B713 to A76
	C50	C50 Brackenhill Rd to B7036 right to A70 ochiltree
	B7036	B7036 from C50 to Darlaw View
		Return to Depot

Gauchalland Depot - Priority 1 Carriageway Gritting Route 8 EAST AYRSHIRE COUNCIL		
Town /Village	Road Number	Description
		B713 to Junction B705
		B705 to Sorn St
		Sorn St to Sloan Street
		Sloan Street to James Taylor Avenue
		James Taylor Avenue to John Street
		John Street to Sloan Street
		Sloan Street RA to Junction B705
		B705 to B713
		From B713 to Sloan Street junction James Taylor Avenue
		B705 to Auchinleck Academy
		Auchinleck Academy (access mornings only)
		B705 to Roundabout Mauchline Rd
		Mauchline Rd to A76 Roundabout
		Templeton RA off slip back
		C62 to B7036 (Barony Rd)
Auchinleck		Barony Rd to Coal Rd
		Coal Rd to Barbieston Rd
		Barbieston Road to Junction Church Street
		Church Street
		Backrogerton Crescent
		Barbieston Road to Milne Avenue
		Milne Avenue to Backrogerton Crescent
		Loupe then Milne Avenue upside
		Old Avenue to Sorn Road
		School Rd and Dalshalloch Rd (mornings only)
		Main St to Well Rd
		Well Rd to Church St
		Main St to A70 Cumnock
Cumnock		New Bridge St
		A70 to Roundabout
		Cumnock Academy Access (mornings only)
		Kerr & Smith
		Hearth Rd to Hearth Pl right to Car Rd right to Cairn Rd to College to B7083
		Glaisnock St to Greenholm Rd
		Greenholm Rd
		Glaisnock St to Townhead St
		Townhead St to Edgar Ave
	Edgar Ave to Barshare Rd loup	

Gauchalland Depot - Priority 1 Carriageway Gritting Route 8 EAST AYRSHIRE COUNCIL		
Town /Village	Road Number	Description
		Barshare Rd loup
		Drumbrochan Rd turn right treat Holland Cres
		Dagleish Ave to Drumbrochan Rd
		Drumbrochan Rd to Holland Cres
		Drumbrochan Rd to A70 Barrhill Rd
		Lugar St
		Hamilton Pl
		B7083 to junction B7046
		B7046 to A70
		Cumnock College to Craigens Rd
Craigens		Craigens Rd to Lamont Cres
		Lamont Cres right to Ryderston Dr
		Craigens Road to Loganhill road
		Avisyard Rd to Davaar Ave to MacIntyre Cres loup
Cumnock		Holmburn Rd to Glaisnock St
		Glaisnock St to A76
		Glaisnock Rd U719 to U720
	U719	U719
	U720	U720 Rigg Rd to B741
Logan		Loganhill Road to Logan Avenue
		Logan Ave right to Boswell Cresto Bryce Ave right to Paterson Ave
		Logangate Terrace
		Logan Ave to Glenmuir Water Rd U729
	U729	U729 to A76
		Peesweep Brae Rigg Rd
	C65	C65 to Sorn
		Return to Depot

Meadowhead Depot - Priority 1 Carriageway Gritting Route 9 EAST AYRSHIRE COUNCIL		
Town /Village	Road Number	Description
	B742	B742 to Junction A713
	A713	A713 to Junction B7034 Dalrymple
	B7034	B7034 to Dalrymple at Garden Street
	B742	B742 turn left treat Forglen Rd turn left treat Hill View to School
		B742 to A713
	A713	A713 to Junction B742 Coylton
Patna		A713 to Patna Dalharco Ave Dalharco Ave
		Dalharco Ave to Carnshalloch Ave
		Carnshalloch Ave to Whitehill Ave including RA
		Whitehill Ave to Carskeoch Dr
		Carskeoch Dr to Doonside Ave
		Doonside Ave to Whitehill Ave
		Daldowie Rd turn right Grit Dalvennan Ave
		Carskeoch Dr to Grit Blaney Ave
		Main St to Whitehill forestry Access Main Street to A713
Dalmellington & Bellsbank	A713	A713 from Dalharco Ave to Boundary B7013 to RA
		High Main St to Church Hill
		Church Hill to Melling Terr
		Main St B741 to Ayr Rd
		Merrick Drive
		Dalfarson Ave right to Ness Glen Rd right to Glen Mount
		Dalfarson Ave to Craiglea Cres
		Craiglea Cres to Merrick Dr
		Doon Academy turning area
		Gateside Rd
		Burnton Gateside Rd to B741
	B741	B741 High main Street to Roundabout
	B741	B741 to U720 Dalricket Rd
	U720	U720 Dalricket Rd to bridge
	B741	B741 to A76
New Cumnock		C90 to Cemetery turn (mornings only)
		Lime Rd to Greenbraes Dr to Blarene Dr
		Connel View

**Meadowhead Depot - Priority 1 Carriageway Gritting Route 9 EAST AYRSHIRE COUNCIL
Continued**

Town /Village	Road Number	Description
		Lanehead Terr to Burnton PI
		Burnton PI to Lime Rd
		Connel View
		Highpark Ave to Redree PI
		Redree PI
		Ashmark Ave to Burnton Place to right Dalhanna Dr Loch Browan Cres
		Loch Browan Cres
		Dalhanna Drive to Greenhead Rd
		Greenhead Rd to A76
		Castlemains Ave
		Holm Rd
		Mansfield Rd to haulage turning
		Travel to Depot

Meadowhead Depot - Priority 1 Carriageway Gritting Route 10 EAST AYRSHIRE COUNCIL			
Town /Village	Road Number	Description	
	A70	A70 to A76 Cumnock	
Cumnock		Holmhead Rd left to Hospital Rd right Bute Rd right Stepend Rd	
		Templand Dr left Holmhead Rd right to Robbiesland Dr to Sullivan Way	
		Holmhead Rd left to Oakbank Dr to Robbiesland Dr	
		Holmhead Rd to Hospital Rd straight	
	B7046	B7046 to B730	
	B730	B730 to A713	
	C89	C89 Rankinston to Roundabout	
Drongan		B730 to junction Watson Terrace Drongan	
		Watson Terrace to Taiglum Pl	
		Taiglum Pl	
		Lane Cres to Glencraig St	
		Glencraig St to Hanniston Ave	
		Hanniston Ave to DrumWhill Rd	
		Mill of Shield Rd to Coronation Road to Barbieston Ave	
		Littlemill of Shield Road turn left grit Carston Ave right grit Millmannoch Ave	
		B730	B730 to A70 junction
			B730 to Stair
		C82 Trabochburn Rd	
		C3 to Mauchline	
		C49 to ochiltree	
Ochiltree		Main Street Ochiltree to Mote Toll to A70	
	U728	U728 to B7046	
	B7046	B7046 to B730 Sinclairston to Drongan	
	A70	A70 Coalhall west bound	
		Travel to Depot	

Appendix 5 Priority 1 Carriageway Gritting Routes – South Ayrshire Council

Meadowhead Depot in Coylton operates seven Priority 1 carriageway gritting routes, mainly but not exclusively, confined to the north of the Council area; and includes the major towns of Ayr, Prestwick and Troon.

Grangestone Depot in Girvan operates three Priority 1 carriageway gritting routes, mainly in the south of the Council area; and includes the major towns of Maybole and Girvan.

Method

Acting on advice received from the Council's weather service provider, Priority 1 routes will receive precautionary treatment prior to the onset of frost / ice.

Included within the Priority 1 routes are all A class and B class roads and strategic C class and unclassified roads.

Roads which meet the Council's criteria of precautionary treatment applied to a minimum of one road servicing council schools, and emergency service depots, plus roads servicing high concentrations of employment, commercial outlets and densely populated residential areas and other roads of strategic importance are also included.

The exception to this arrangement is when the Council's weather service provider advises that there is no risk of hazardous winter road conditions in any of the four climatic domains. In this event altered routes which exclude roads in a particular climatic domain are used.

A small number of roads within residential areas may be partly treated in order to optimise a predetermined routing system.

Document	Winter Service Plan 2018/19	Revision	0
WINT-1	Page 39 of 55	Date	08/11/2018

Meadowhead Depot - Priority 1 Carriageway Gritting Route 1 South Ayrshire Council			
Town /Village	Road Number	Description	
-	B742	From Meadowhead Roads Depot to A70 Hillhead Coylton	
Coylton	A70	Hillhead	
		Joppa	
		Ayr Road	
-		From Ayr Road Coylton to A77 Holmston Roundabout	
Ayr		Holmston Road	
		Station Roundabout	
		Station Bridge Road	
		Parkhouse Street	
		Burns Statue Square	
		A79	Station Road
	John Street		
	Allison Street		
	New Road		
	Prestwick Road		
Ayr Road			
Main Street			
The Cross			
Prestwick	Monkton Road (The Cross to Airport Loop Road)		
	Airport Loop Road		
	-	B746	From U98 to Main Street Loans
	Loans	Main Street Loans	
-	A759	From Main Street Loans to A78 Auchengate Interchange	
		From A78 Auchengate Interchange to East Ayrshire Council boundary at Old Rome Bridge Gatehead	
		Milton View (from Old Rome Bridge to Railway Level Crossing)*	
Gatehead		Main Road (from Railway Level Crossing to Cochrane Inn)*	
		-	B750
Dundonald	B750	Kilmarnock Road	
		-	Kilnford Drive (From Drybridge Road to A759)
	Castle Drive		
	Newfield Drive (From Dundonald Primary School to Castle Drive only)		
	B730	From A759 to North Ayrshire Council boundary at south of Railway Bridge Drybridge	

* Treated on behalf of Ayrshire Road Alliance (East Ayrshire Council area)

Meadowhead Depot - Priority 1 Carriageway Gritting Route 1 (continued) South Ayrshire Council			
Town /Village	Road Number	Description	
Drybridge	B730	Main Street (from South Ayrshire Council boundary south of Railway Bridge to Shewalton Road Drybridge)*	
Dundonald		Drybridge Road	
		Main Street	
-		From Main Street Dundonald to A77 at Bogend Toll	
		From A77 at Bogend Toll to A719 at Rabbit Wood	
		From A719 at Fail Toll to Croft Street Tarbolton	
Tarbolton		Croft Street	
		Cunningham Street	
		Montgomerie Street	
		From Montgomerie Street Tarbolton to B743 near Carngillan	
-		C92	From B730 near Caldrongill to C8 near Plewlands
		C8	From A719 near Adamhill to C64 west of Main Street Craigie
		U80	From B730 near Laigh Langside to C8 north of High Langside
	B743	From B730 at Carngillan to B744 at Weston Brae Annbank	
	B744	Weston Brae	
Annbank		Brown's Crescent (excluding cul-de-sac between No.2 and No.31)	
		Weston Avenue	
		-	Goodwin Drive
	-	Braeside	
	-	Whitehill Crescent	
-	B744	From Weston Avenue Annbank to A70 at Belston	

* Treated on behalf of North Ayrshire Council under cross boundary arrangements.

Meadowhead Depot - Priority 1 Carriageway Gritting Route 2 South Ayrshire Council			
Town / Village	Road Number	Description	
Ayr	B743	Heathfield Road	
	-	Low Road	
	A719		High Road
			Main Road
			Whitletts Road
		King Street (from Whitletts Road to John Street only)	
Prestwick	-	Hunter's Avenue	
		Doon Avenue	
		Waterloo Road (From Doon Avenue to Ayr Road)	
-	B743	From A77 Whitletts Roundabout to C150 St Quivox Road	
	C150	St Quivox Road (from B743 to A77)	
	B743	From C150 St Quivox Road to B742 Sandyford Road Mossblown	
Mossblown		Sandyford Road	
-	B742	From Sandyford Road Mossblown to A77 at Sandyford Toll roundabout	
	A719	From B742 east of Sandyford Toll roundabout across East Ayrshire Council boundary to A76 Crossroads roundabout	
	B744	From A76 at Crosshands across South Ayrshire Council boundary to Garden Street Tarbolton	
Tarbolton		Garden Street	
	C17	Westport (from Cunningham Street to Gallowhill Avenue)	
	-		Gallowhill Avenue
			Langlands Drive
			Princes Street
			Back Street
			Sandgate Street
	James Street		
-	B744	From Montgomerie Street Tarbolton to B743 south of Walston Farm	
		From B744 at Carngillan across East Ayrshire Council boundary to Ayr Road Mauchline	
Mauchline	B743	Ayr Road*	
-		Loudoun Street*	
		From B744 to Mauchline Road Mossblown	
Mossblown		Mauchline Road	
-	B742	Annbank Road from B743 Mauchline Road to B744 at Weston Smithy	

* Treated on behalf of Ayrshire Roads Alliance (East Ayrshire Council area)

Meadowhead Depot - Priority 1 Carriageway Gritting Route 3 South Ayrshire Council		
Town / Village	Road Number	Description
Ayr	C39	Corton Road (from A713 to A77)
-	A719	Dunure Road (from Longhill Avenue Ayr southwards to C12 at Dunure Mains Farm)
Dunure	C12	Castle Road Station Road
-	A719	From C12 at Dunure Mains Farm to B7023 at Pennyglen From B7023 at Pennyglen to Kirkoswald Road Maidens
Maidens	-	Kirkoswald Road Shanter Road (from Kirkoswald Road to Maidens Primary School entrance only)
-	A719	Turnberry Road From Turnberry Road Maidens to Maidens Road Turnberry
Turnberry		Maidens Road
-		From A77 at Bridgemill Girvan to Main Street Dailly
Dailly	B741	Main Street Linfearn Road
-		From Linfearn Road Dailly to Main Street Straiton
Straiton		Main Street
-	C1	Newton Stewart Road Straiton - Newton Stewart Road (from Straiton to Tarlaw Bridge)
Straiton	B741	Dalmellington Road (from Main Street to No.34 only)
-	B7045	Kirkmichael Road From Kirkmichael Road Straiton to Straiton Road Kirkmichael
Kirkmichael	-	Straiton Road Bolestyle Road (from Straiton Road to Bolestyle Crescent (north junction only)) Bolestyle Crescent Woodside Avenue (from Bolestyle Crescent to Kirkmichael Primary School entrance only)
-	B7045	From Straiton Road Kirkmichael to A77 at Hogg's Corner
Minishant	-	Mure Place Merrick Place (to Minishant Primary School only)
Ayr	A79	Maybole Road (slip lane off A77 only)

Meadowhead Depot - Priority 1 Carriageway Gritting Route 4 South Ayrshire Council

Town / Village	Road Number	Description
Ayr	A713	Dalmellington Road
		Castlehill Road
	-	Ashgrove Street (from Castlehill Road to Dongola Road only)
		Dongola Road (from Ashgrove Street to Holmston Road only)
	A70	Killoch Place
		Alloway Street
		High Street
		Boswell Park (from Douglas Street to Carrick Street only)
		Carrick Street
		Fullarton Street (from Carrick Street to Douglas Street only)
		Barns Street
		Wellington Square
		Bath Place
		Pavilion Road
		Esplanade (from Pavilion Road to Bath Place only)
		Dalblair Road
		Kyle Street
		Smith Street
		Mill Street
	A70	Miller Road
	A719	Racecourse Road
		Doonfoot Road
		Dunure Road (from Racecourse Road to Longhill Avenue only)
		Longhill Avenue (from Dunure Road to Cairnsmore Drive only)
		Corserine Road (from Cairnsmore Drive to Newark Avenue only)
		Newark Avenue (from Corserine Road to Crossburn only)
		Crossburn
		Browncarrick Drive (from Crossburn to Dunure Road only)
		Scaur O'Doon Road (from Dunure Road to Abbots Way only)
		Abbots Way (from Scaur O'Doon Road to Greenan Way only)
		Greenan Way
		Greenan Road (from Greenan Way to Earls Way only)
		Earls Way
		Longhill Avenue (from Cairnsmore Drive to High Maybole Road)
		The Loaning
		Lauchlanglen Road
		Finlas Avenue
		Carcluie Crescent
		Shielhill
		Braden Drive
		Bathurst Drive
		Merkland Road
	Kerspark (from Merkland Road to Maybole Road only)	
	Kincaidston Drive	

Meadowhead Depot - Priority 1 Carriageway Gritting Route 4 (continued) South Ayrshire Council		
Town / Village	Road Number	Description
Ayr	-	Snowdrop Square
		Hillfoot Road (from Holmston Road to Holmston Drive)
		Holmston Drive (from Hillfoot Road to Caledonia Road)
		Caledonia Road (from Holmston Drive to Armour Drive)
		Armour Drive
		Glencairn Road (from Armour Drive to Holmston Drive)
		Holmston Drive (from Glencairn Road to Caledonia Road)
		Hillfoot Road (from Holmston Drive to Dalmellington Road)
		Belmont Road
	B7024	Monument Road
		Alloway
	-	Doonholm Road (from Murdoch's Lone to Alloway)
		Greenfield Avenue
		Cunning Park Drive
		Gearholm Road
		Racecourse View
		Corsehill Road
		Midton Road (from Carrick Road to Ronaldshaw Park)
		Ronaldshaw Park
		Blackburn Road
		Blackburn Drive (from Blackburn Road to Seafield Road)
		Seafield Road
		Lochlea Drive
		Forehill Road (from Lochlea Drive to Hillfoot Road)
		Shavin Brae (from Hillfoot Road to Crofthead Road)
		Crofthead Road
		Rowan Crescent (from Crofthead Road to Pine Brae)
		Coylton
Woodhead Road (from Barclaugh Drive to Drumcoyle Drive)		
Drumcoyle Drive (from Woodhead Road to No.5)		
The Beeches (from Joppa to Broadwood)		
Broadwood		
Highpark Road		
St Brides Way		
Garvine Road		
Laighpark Road (from Garvine Road to Ayr Road)		

Meadowhead Depot – Priority 1 Carriageway Gritting Route 5 South Ayrshire Council		
Town / Village	Road Number	Description
-	B746	From A78 Loans off slip road to U98 Corraith Road
	U98	From B746 to U99
Symington	U99	From U98 to Townend Road Symington
		Townend Road
	-	Main Street
		Symington Road North (from Main Street to bus turning circle)
	C39	Bus turning circle at Symington Road North
		Symington Road South (from Main Street to access road to Stockbridge Farm)
	-	Brewlands Road
		Mount Avenue (from Brewlands Road to Lawhill Road only)
		Lawhill Road
-	C39	Brewlands Crescent (from Lawhill Road to Brewlands Road only)
		From Brewlands Road Symington to B730 at Coodham
	B751	From B730 at Coodham to A759 at Old Rome
	C128	Harperland Road (from A759 to B730
Troon	-	Old Loans Road (from B730 Main Street Dundonald to A759 Main Street Loan)
		Central Avenue
		North Drive (from Central Avenue to Buchan Road only)
		Buchan Road (from North Drive to Scott Crescent)
		Burns Road (from Buchan Road to Scott Crescent only)
		Scott Crescent
		Deveron Road
		Staffin Road (from Deveron Road to Garry Place only)
		Garry Place (from Staffin Road to Sark Drive only)
		Sark Drive
	Euchan Place	
	B746	Kilmarnock Road
		Beach Road
	-	Burnfoot Avenue
		Kyle Drive
		Walker Avenue
		Muir Drive
	B746	Barassiebank Lane
		North Shore Road
	-	Barassie Street
		Burnside Place
		St Meddans Street (from South Beach to Barassie Street only)
		Church Street
		Bentinck Drive (from St Meddans Street to Yorke Road only)
		Victoria Drive (form Bentinck Drive to Golf Crescent only)
		Golf Crescent
	Yorke Road (from Bentinck Drive to Fullarton Drive only)	

Meadowhead Depot - Priority 1 Carriageway Gritting Route 5 (Continued) South Ayrshire Council		
Town / Village	Road Number	Description
Troon	-	Harling Drive
-	B746	From A759 Main Street Loans to U98 Corraith Road
Prestwick	-	Monkton Road (from Shawfarm Roundabout to Welsh Road)
		Shawfarm Road (from A79 to Marsmount Road)
		Marsmount Road
		Monument Crescent (from Marsmount Road to Shaw Road)
		Shaw Road (from Monument Crescent to Shawfarm Road)
		Shaw Road (from Shawfarm Road to Sherwood Road)
		Sherwood Road (from Shaw Road to Outdale Avenue)
		Outdale Avenue
		Marchburn Avenue
		Indale Avenue
		Outdale Avenue
		Briarhill Road
		Crothead Road
		Alexandra Avenue
		Caerlaverock Road
		Sandfield Road
		Bellevue Road (from Sandfield Road to Adamton Road North)
		Biggart Road
		East Road (from Biggart Road to St Quivox Road)
		St Quivox Road
		Adamton Road North
		Adamton Road South (from Biggart Road to Auchencruive Avenue)
		Auchencruive Avenue
		St Andrew's Avenue (from Auchencruive Avenue to Biggart Road)
		East Road (from Biggart Road to Heathfield Road)
		Hunter's Avenue
Afton Avenue		
Adamton Road South (from Afton Avenue to Auchencruive Avenue)		
Bellevue Road (from Sandfield Road to Main Street)		
Crandleyhill Road		
Nursery Avenue		
Kirkhill Crescent		
Ayr	-	Hunters Avenue
		Northfield Avenue
		St Georges Avenue
		McCalls Avenue
		Walker Road

Meadowhead Depot - Priority 1 Carriageway Gritting Route 6 South Ayrshire Council		
Town / Village	Road Number	Description
-	B742	From Meadowhead Roads Depot to B744 at Weston Brae
Tarbolton	B744	Burns Street
	C17	Westport
-		
Ayr	-	Maryfield Road
		Annpit Road (from Maryfield Road to Seaforth Road)
		Viewfield Road (from New Road to Russell Drive)
		Russell Drive
	B747	Craigie Road
		Craigie Way
		Hayhill
		Mainholm Road
		Low Road (from High Road to James Campbell Avenue)
		James Campbell Avenue
		Glenmuir Road
		Sloan Street (from Glenmuir Road to Ferguson Street)
		Ferguson Street (from Sloan Street to Galloway Avenue)
		Galloway Avenue
		Waggon Road
		York Street
		North Harbour Street
		Chalmers Road
		Belmont Avenue
		Fenwickland Avenue
Peggieshill Road		
Annfield Glen Road		
Burnbank Road		
-	U116	University Hospital Ayr Access Road
Coylton	-	Carbieston Avenue (from A70 to Lorne Terrace only)
-	B730	From Stair Inn to B743 at Carngillan
Mossblown	-	Acron Avenue
		Drumley Drive
		Station Road (from Annbank Road to Mossgreen Place)
		Mossgreen Place
		Afton Avenue
		Church Drive

Meadowhead Depot - Priority 1 Carriageway Gritting Route 7 South Ayrshire Council		
Town / Village	Road Number	Description
-	A713	From B742 to A77 Bankfield roundabout
Ayr	A79	Maybole Road
		St Leonards Road
		Carrick Road
		Beresford Terrace
		Killoch Place (from Beresford Terrace to Miller Road only)
	A70	Miller Road
	A719	Alloway Place
		Wellington Place
		Fort Street
	C146	South Harbour Street (from Fort Street to South Beach Road)
	-	South Beach Road
	A719	South Harbour Street (from Fort Street to New Bridge Street)
		New Bridge Street
		Sandgate
	-	Fullarton Street
Douglas Street		
Boswell Park (from Douglas Street to Sandgate only)		
Main Street (from King Street to Waggon Road only)		
New Road (bus corridor only)		
-		From A719 to Tarbolton Road Monkton
Monkton	B739	Tarbolton Road
		Baird Road
		Kilmarnock Road (from Baird Road to Main Street)
		Main Street
-	C15	From Main Street Monkton to A78 Monktonhead roundabout
-	C1	From A77 Dutch House roundabout to Kilmarnock Road Monkton
Monkton	C1	Kilmarnock Road (From 30 mph signs to Baird Road)
	B739	Station Road
Troon	B749	Monktonhill Road
	C52	Southwood Road
	B749	Craigend Road
		South Beach
		Ayr Street
	-	Templehill
		Link Road to Harbour Road
	B746	Harbour Road
		Port Ranald Drive
	-	Jubilee Road
	A759	Portland Street
Dundonald Road		
Loans		Troon Road
-	B730	From A77 northbound off slip road to B730 roundabout at Coodham

Meadowhead Depot - Priority 1 Carriageway Gritting Route 7 (continued)		
Town / Village	Road Number	Description
-	C39	Symington Road South (from A77 southbound off slip road via overbridge to access road to Stockbridge Farm)
	C74	From A70 to B742
	U77	From B742 to Hole Road Coylton
Coylton	-	Hole Road

Grangestone Depot - Priority 1 Carriageway Gritting Route 1 South Ayrshire Council			
Town / Village	Road Number	Description	
Girvan	-	Ladywell Avenue	
-	A714	From A77 Shalloch Park Roundabout Girvan to U52 Muck Road Pinwherry	
	U52	From A714 to Pinwherry Community Centre	
	A714	From U52 Muck Road to C72 Gowlands Terrace Barrhill	
Barrhill	C72	Gowlands Terrace Barrhill	
-		From Gowlands Terrace Barrhill to Barrhill Railway Station	
Barrhill	A714	Main Street	
-		From Main Street Barrhill to Dumfries and Galloway Council boundary at Wheeb Bridge	
Girvan	B7027	From A714 Main Street Barrhill to Dumfries and Galloway Council boundary at Loch Maberry	
	B7035	Coalpots Road (from A77 Shalloch Park roundabout to Piedmont Road)	
	-		Piedmont Road (from Coalpots Road to Mote Hill Road)
			Mote Hill Road
			South Park Avenue (from Mote Hill Road to Wreck Road)
			Wreck Road
	B7035		Piedmont Road (from Dalrymple Street to Mote Hill Road)
			Coalpots Road (from Piedmont Road to South Park Avenue)
	-		South Park Avenue (from Coalpots Road to Mote Hill Road)
			Victory Park Road (from South Park Road to Wesley Road)
	B7035		Wesley Road
			Coalpots Road (from South Park Avenue to The Avenue)
	-		The Avenue
	B7022		Church Square
			Hamilton Street
			Montgomerie Street
	B7035		Coalpots Road (from The Avenue to B734 at Brae Toll)
	-		Bridge Street (from A77 to Newton Kennedy Bridge)
Newton Kennedy			
Newton Place			
Golf Course Road (Newton Place to A77)			

Grangestone Depot - Priority 1 Carriageway Gritting Route 2 South Ayrshire Council		
Town / Village	Road Number	Description
-		From A714 at Hallowchapel to Main Street Colmonell
Colmonell	B734	Main Street
		Rowantree Street
-		From Rowantree Street Colmonell to C121 at Liggetcheek
-	C121	From B734 at Liggetcheek to A77 near Bennane
	B734	From A77 at Redburn House to C121 at Liggetcheek
	C59	From B734 at Knockdollar to Mains Road Ballantrae
Ballantrae	-	Mains Road
		The Vennel
		Foreland (from The Vennel to Shore Road)
-		Shore Road
-		From A77 south of Ballantrae Bridge to Craigneil Road Colmonell
Colnomell	C45	Craigneil Road
	-	Haddows Row
-		Kirkhill Crescent
	C81	From B734 at Jubilee Bridge to A713 north of Daljarrock Bridge
Barr	B734	From A713 at Pinmore Bridge to Stinchar Road Barr
	-	Stinchar Road
		Changue Road (from Glenginnet Road to Barr Primary School)
	U66	Glenginnet Road (from Stinchar Road to No.85)
		From Glenginnet Road Barr to U27 at South Balloch
	B734	From Stinchar Road Barr to B7035 at Old Dailly
	B7035	From B734 at Old Dailly to B741 Linfern Road Dailly
Dailly	C151	Bridge Street
		Woodside
	C30	From B7035 at Lovestone to B734 at Penkill
	B734	From B7035 at Old Dailly to A77 at Bridge Mill Roundabout Girvan

Grangestone Depot - Priority 1 Carriageway Gritting Route 3 South Ayrshire Council		
Town / Village	Road Number	Description
-	C29	From B741 at Lochmodie Bridge to Dailly Road Maybole
Maybole	-	Dailly Road
		Ladywell Road
		Society Street
		Abbot Street
		Kirkland Street
		Redbrae
		Cargill Road
		Cargill Avenue
		Kilzenie View
		Elms Drive (from Cargill Avenue to Elms Crescent)
		Elms Crescent
		Ashgrove (excluding cul-de-sac between No.16 and No.18)
		Ashgrove Avenue
		Gardenrose Path (from Cargill Road to Fineview Place)
		Minnoch Crescent
		Kildoon Drive (excluding cul-de-sacs)
		Kincraig Avenue
		Queen's Terrace
		Burns Drive
		Gallowhill Avenue
		McAdam Way (excluding cul-de-sac between No.33 and No.55)
		Whitefaulds Avenue
		Mochrum Avenue (excluding cul-de-sac between No.10 to No.32)
		Whitefaulds Crescent
		Ladyland Road
		Coral Glen
		Welltrees Street
		Carrick Street
		Greenside
		John Knox Street
B7023	St Cuthbert Road	
B7024	Barns Road	
-	B7023	Crosshill Road
Crosshill		From Crosshill Road Maybole to King Street Crosshill
-		King Street
-	C88	Dailly Road
-		From Dailly Road Crosshill to B741 at Rowanston Toll
Crosshill	-	From B741 at Cloyntie Toll to Dalhowan Street Crosshill
		Dalhowan Street
		Milton Street
-	C31	Kirkbride Crescent
-		Carrick Drive
-		Kirkmichael Road (from Carrick Drive to Dalhowan Street)

Grangestone Depot - Priority 1 Carriageway Gritting Route 3 (continued)		
Town / Village	Road Number	Description
-	B742	From A77 at Nether Culzean to Dalrymple Bridge
Dalrymple		Main Street (from Dalrymple Bridge to Garden Street)*
	B7034	Garden Street (from Main Street to South Ayrshire Council boundary at Purclewan Burn)*
-		From East Ayrshire Council boundary at Purclewan Burn to A77 near Carcluie House.
Ayr	C39	Doonholm Road (from A77 to Murdoch's Lone)
		Murdoch's Lone
		Alloway (from Murdoch's Lone to High Maybole Road)
-	B7024	High Maybole Road (from Alloway Ayr to Alloway Road Maybole)
		Alloway Road
Maybole		Barns Terrace
	B7023	Culzean Road
-		From Culzean Road Maybole to A719 at Pennyglen

* Treated on behalf of Ayrshire Roads Alliance (East Ayrshire Council area)

