



**Ayrshire Roads Alliance**

---

# Winter Service Plan

*For East Ayrshire and South Ayrshire  
Councils*

**2024/25**



**East Ayrshire Council**  
Comhairle Siorrachd Àir an Ear

*south*  
**AYRSHIRE**  
COUNCIL

## INTRODUCTION

The Ayrshire Roads Alliance within the Department of Safer Communities is responsible for providing the winter service for East Ayrshire and South Ayrshire Councils. The remit includes:

- Establishing standards
- Establishing treatment priorities
- Day to day direction of operations
- Monitoring performance
- Liaison with adjoining Councils and Emergency Services

The Winter Service Plan was revised during the summer of 2015 to introduce the concepts and to follow the format provided in the code of practice 'Well Maintained Highways', which was updated in September 2013.

In addition, the Ayrshire Roads Alliance will follow advice from the SCOTS Winter Service Subgroup on the use and application of Appendix H: Winter Service issues.

There is additional and more detailed information available internally (within the Ayrshire Roads Alliance Quality Management System and the Severe Weather Operations Plan for resources involved with the management and implementation of this Winter Service Plan.)

Document	Winter Service Plan 2024/25	Revision	3
WINT-1	Page 2 of 182	Date	11/11/24

## 1.0 Statement of Policies and Responsibilities

### 1.1 Statutory obligations and policy

1.1.1 East Ayrshire and South Ayrshire Council have a statutory obligation under Section 34 of the Roads (Scotland) Act 1984 to prevent snow and ice endangering the safe passage of pedestrian and vehicles over public roads in terms of the above legislation a 'road' includes carriageways, footways, and footpaths areas.

1.1.2 South and East Ayrshire Council's aim is to provide an effective and efficient Winter Service in accordance with 'Well Maintained Highways' and within the resources available to: -

- Allow the safe passage of vehicles and pedestrians
- Minimise delays due to winter weather
- Ensure operations are undertaken safely

1.1.3 The aim of the Winter Service Plan is to set out how the Winter Service will be provided within each Council roads network.

### 1.2 Responsibilities

1.2.1 The enabling and service delivery of the Winter Service is the responsibility of the Head of Service - Ayrshire Roads Alliance.

1.2.2 The Ayrshire Roads Alliance is responsible for the work involved in providing the Winter Service. These responsibilities include the following:

- Developing the Winter Service to cope with an 'average winter' but having the capability to be extended or adapted when winters are more severe or of a longer duration than average.
- Production and distribution of the Winter Service Plan.
- Review and update of the Severe Weather Operations Plan

Document	Winter Service Plan 2024/25	Revision	3
WINT-1	Page 3 of 182	Date	11/11/24

- Providing accurate and timely information to the East Ayrshire Risk Management Centre and South Ayrshire Monitoring Station.
- Carrying out an annual review of the service and updating the Winter Service Plan where necessary.
- Liaising with adjacent roads authorities in the preparation of the Winter Service Plan to ensure continuity of service across boundaries.
- Providing a list of roads designated for priority treatment.
- Providing a list of footways and pedestrian areas designated for priority/treatment.
- Providing a list of roads designated as strategic routes for snow clearing.
- Providing decision-making charts, advice, and guidance for those involved in the Winter Service.
- Liaising with the Winter Supervisors to provide help and advice to ensure the service is delivered in the most effective, efficient, and economical way, including establishing operational priorities during extreme weather conditions.
- Arranging for weather forecasts, ice prediction reports and road and weather monitoring information to be available throughout the winter period.
- Arranging for appropriate specialist vehicles and equipment to be available throughout the winter period.
- Arranging for supplies of salt to be available at the start of the overall winter period.
- Monitoring the salt usage and ensuring supplies are replenished to maintain an appropriate level of salt in the stockpile.
- Establish contact numbers for access to emergency services control rooms, public transport operators, local media, and the motoring organisations.
- Passing of factual information on road conditions to each Council's Communications Team as and when required.
- Monitoring all aspects of the Winter Service and providing information on performance indicators.

Document	Winter Service Plan 2024/25	Revision	3
WINT-1	Page 4 of 182	Date	11/11/2024

- Maintaining full and comprehensive records of all Winter Service activities.
- Directing all available resources.
- Liaising when necessary with the Road Weather Forecast Provider.
- Monitoring the weather forecasts and actual weather conditions.
- Monitoring actual road surface temperatures and road conditions.
- Assessing the requirement to carry out precautionary or post salting treatment or snow clearance on the network, deciding appropriate start times and rates of spread and arranging for the work to be carried out, monitoring effectiveness of treatments and amending instructions, when necessary, due to a change in conditions
- Assessing the need to carry out post salting or snow clearance of the remaining road network during prolonged spells of sub-zero temperatures, and ensuring the works are carried out when necessary and as resources permit.
- In the event of deteriorating conditions, notably major blockages to the primary route network and/or severe drifting snow to contact:
  - 1) The Emergency Services Control Rooms. (Police, Ambulance, Fire)
  - 2) Ayrshire Civil Contingency Team
  - 3) Communications Team.
  - 4) Chief Executive and/or other nominated Senior Officers.
- Maintaining a list of contractors with suitable plant and operatives for snow clearing purposes and hiring in such when necessary to do so.
- Liaising on operational matters when appropriate with the adjacent Local Authorities to ensure continuity of treatment across authority boundaries.
- Liaising when appropriate with the
- Emergency Services and Public Transport Operators.
- Providing accurate and timely information to the Risk Management Centre and South Ayrshire Monitoring Station.

Document	Winter Service Plan 2024/25	Revision	3
WINT-1	Page 5 of 182	Date	11/11/24

- Ensuring the Transport workshops are notified of any vehicle faults and that they are repaired without delay.
- Arranging with Transport workshops for appropriate staff to be available on 24 hour call out to deal with any serious mechanical breakdown(s).
- Checking and calibrating salt spreading equipment and weighbridges and retaining of the certificates.
- Ensuring all operatives receive adequate and appropriate training in Winter Service activities and those drivers are issued with 'route cards' to record details of the treatment times, etc.

## 1.3 Decision making process

- 1.3.1 The day to day routine operational decisions will be made by the Winter Controller using weather forecasts provided by Weather Services Provider and the road and weather monitoring data.
- 1.3.2 The Overall Winter Period shall be from 14 October 2024 until 21 May 2025, with the Core Winter Period being from the fourth Monday of each October ending on the second Monday of April (these periods can be extended should conditions warrant).
- 1.3.3 On receipt of a weather forecast or update, the Winter Controller will reach a decision on action for the next 24 hours from one of the five following options:
- a) Pre-salting to commence immediately after the period of mobilisation.
  - b) Pre-salting to commence at a specified time (e.g. 1900 hours).
  - c) Treatment is likely - but start time cannot yet be determined.
  - d) Treatment is possible - conditions being monitored by patrol vehicles (marginal night).
  - e) No action planned (minimum forecast temperature +1°C).

Document	Winter Service Plan 2024/25	Revision	3
WINT-1	Page 6 of 182	Date	11/11/24

- 1.3.4 Only if treatment is planned the decision record will include the required salt spread rate. Any post salting or snow clearance subsequently required shall also be recorded. This decision and any updates will be distributed to appropriate roads personnel and stakeholders.
- 1.3.5 The Winter Decision Matrix is contained in the Severe Weather Operations Plan.
- 1.3.6 Post salting would be carried out under the following circumstances.
- On Priority 1 Routes where salt has been washed off due to rain.
  - Remaining roads may be treated by salting as determined by priority, progress, conditions, and resources.
- 1.3.7 Snow clearing operations will be undertaken across the network as conditions dictate.
- 1.3.8 When snow is forecast, the Priority 1 routes will be treated in accordance with the Treatment Matrix.
- 1.3.9 Two stages of snow clearing can be considered
- Light falls of undisturbed accumulation of snow reaching a depth of less than 10mm in depth. Normally be dealt with by one or more repeated applications of salt.
  - Moderate/Heavy falls of snow greater than 10mm in depth that may also be associated with drifting. These conditions may require the use of ploughs, specialised equipment and/or mechanical excavators in addition to salting. As ploughing may block junctions and side roads, arrangements will be made to remove any resulting accumulations of snow, as resources permit.
- 1.3.10 Normal priority (when resources permit) will be to clear the snow from Minimum Winter Network Routes (Snow Routes) then clear the remaining Priority 1 Routes before dealing with the Priority 2 and Priority 3 routes.

Document	Winter Service Plan 2024/25	Revision	3
WINT-1	Page 7 of 182	Date	11/11/24



1.3.11 Under extreme conditions the priority will be to clear and treat the Minimum Winter Network Routes (Snow Routes).

## 1.4 Arrangements with adjacent authorities

1.4.1 Reciprocal arrangements will be made with adjacent authorities to ensure the most efficient and consistent treatment of routes at boundaries, and co-operation in providing during winter service operations.

1.4.2 At the boundary of the Trunk Roads Network, Ayrshire Roads Alliance shall treat to the give way/ stop markings. The Trunk Road Operating Company shall treat the main trunk road carriageways, slip roads including lanes and splays at acceleration and deceleration lanes and splays.

## 1.5 Resilience levels

1.5.1 Resilience Levels for salt stocks shall be as follows.

1.5.2 Resilience for the Overall Winter Period shall be a minimum of 8 days at heavy salting levels, equating to 4400 tonnes. Heavy salting is calculated as two treatments of the Priority 1 network and one treatment of priority 2 networks.

1.5.3 Resilience for December and January shall be increased to a minimum of 15 days at heavy salting levels, equating to 8,150 tonnes.

1.5.4 If stock levels fall below 4,400 tonnes, consideration will be given to introducing salt conservation methods in accordance with the Salt Resilience Plan (Severe Weather Operations Plan), this may include restricting treatment to the Minimum Winter Network Routes (Snow Routes) and the use of salt/ grit mixes.

Document	Winter Service Plan 2024/25	Revision	3
WINT-1	Page 8 of 182	Date	11/11/24



- 1.5.5 Should our driver levels fall below the required levels for 24/25, the drivers 'off shift' for each week will be required to concentrate on winter duties only, ensuring the required rest is taken to avoid fatigue and adherence to the Working Time Directive, unless emergency situations occur.
- 1.5.6 Our Priority 1 routes will be treated only. Where we may have a shortage of drivers, some drivers will cover 2 routes each, therefore deviating from the 3hr treatment time to a 6hr treatment time.

Document	Winter Service Plan 2024/25	Revision	3
WINT-1	Page 9 of 182	Date	11/11/24

## 2.0 Quality

### 2.1 Quality Management Regime

2.1.1 The Winter Service Plan is included in the Ayrshire Roads Alliance Quality System.

2.1.2 The Ayrshire Roads Alliance Quality System is externally audited and verified.

### 2.2 Document Control Procedures

2.2.1 All quality documents are controlled and held on a computerised document management control system and are available for viewing by all members of Ayrshire Roads Alliance staff.

2.2.2 The Winter Service Plan will be distributed as detailed in section 2.3.

### 2.3 Distribution of Documents

2.3.1 The Winter Service Plan is issued and made available as listed below

- Operational Staff
- Elected Members
- Ayrshire Civil Contingencies Team
- Neighbouring Councils
- Emergency Services and Community Planning Partners
- Ayrshire Shared Services Joint Committee
- Other Council Departments and Services
- Community Councils
- Equality Forum Group

Document	Winter Service Plan 2024/25	Revision	3
WINT-1	Page 10 of 182	Date	11/11/24

## 2.4 Information Recording and Analysis

2.4.1 The Winter Service is contained within the Quality System as one process which contains three main procedures for Winter Preparation, Winter Action and Operations.

### 2.4.2 Winter Preparation Process

- Preparation of different categories of treatment routes
- Training of personnel
- Calibration of plant
- Placing and maintaining of grit bins
- Ordering an adequate supply of salt for the start of the overall winter period.
- Allowing for additional resources should they be required for extreme conditions.
- Liaison with external and internal partners.
- Winter Action & Operations Process

### 2.4.3 The decision-making process for the Winter Controller.

- Issuing of Instructions.
- Distribution of Instructions.
- Procedures for gritting and ploughing.
- Response Times.
- Monitoring and reporting of actions completed.
- Maintaining an adequate supply of salt.

Document	Winter Service Plan 2024/25	Revision	3
WINT-1	Page 11 of 182	Date	11/11/24

## 2.5 Arrangements for Performance Monitoring and Updating

### 2.5.1 Performance Monitoring

2.5.2 Ayrshire Roads Alliance evaluates and compares the following 5 local key performance measures for each winter period: -

- Percentage of vehicles ready for winter by 01 October 2024
- Percentage of pre-salted routes completed within 3 hours target time
- Route efficiency
- Actual winter expenditure per kilometre of Carriageway/per kilometre of gritted route.
- Tonnage of salt used

2.5.3 These performance measures are reported on a regular basis to the Ayrshire Shared Service Joint Committee.

2.5.4 In addition, Ayrshire Roads Alliance will submit an annual return to the Association for Public Service Excellence (APSE) on behalf of East and South Ayrshire Councils to compare Ayrshire Roads Alliance performance against other participating Councils.

2.5.5 The Winter Service Plan is reviewed annually and amended and updated before the 1st of October to include any revisions and changes to the service delivery.

2.5.6 The Quality System has been updated to the standard specified in ISO9001:2015 which includes the concept of monitoring and continuous improvement in line with the concepts of best value.

Document	Winter Service Plan 2024/25	Revision	3
WINT-1	Page 12 of 182	Date	11/11/24

## 3.0 Route Planning for Carriageway and Footway

### 3.1 General

3.1.1 The pre and post salting routes of East and South Ayrshire are reviewed on an annual basis taking into account any alterations to the roads which are treated under the specified gritting criteria.

3.1.2 The main treatment options are as follows:

- Precautionary pre salting
- Post salting
- Snow routes

3.1.3 Routes have been devised to ensure efficient coverage within reasonable timescales.

3.1.4 Sets of Route Cards listing all precautionary salting routes are held electronically by the Head of Service, Ayrshire Roads Alliance.

3.1.5 Route descriptions for Priority 1 gritting route are available within Appendix 4 and Appendix 5 of this document.

Document	Winter Service Plan 2024/25	Revision	3
WINT-1	Page 13 of 182	Date	11/11/24

## 3.2 Carriageways Routes for precautionary treatment

3.2.1 The following roads will be treated if it is forecast that ice or snow is likely to be present on road surfaces:

- Priority 1 – Strategic Routes and Main Distributor Routes, i.e. all 'A' class roads i.e. A70, A71, A77, A713, A735, A736, A759, A719, A714, A79 (This does not include for A77, A78, A76, M77 and a part of the A77 which are responsibility of the Transport Scotland). Safe and reliable access to emergency facilities including fire and rescue, police, ambulance services and hospitals. Other public services (Schools, health centres etc.) access to towns and villages, routes with high percentage of school traffic, designated public transport routes, access to main industrial and business centres.

3.2.2 The duty Winter Controller has authority to amend agreed treatments should updated forecasts or conditions make this necessary. Where changes in the expected weather are forecast the duty Winter Controller will contact the Winter Supervisors and instruct them to take the necessary action. All such changes will be recorded in the electronic Vaisala Manager System.

3.2.3 A review of gritting treatment hours was carried out. This incorporated treatments which take place between the hours of 2200hrs and 0500hrs Monday to Sunday. In extreme conditions and where the forecast merits action, treatments can be actioned during these times. We will continue to have 24/7 standby cover. There is little benefit and high cost associated with treating roads when traffic is minimal, to be fully effective, de-icing requires the actions of vehicles to aid dispersal and to break up snow and ice.

Document	Winter Service Plan 2024/25	Revision	3
WINT-1	Page 14 of 182	Date	11/11/24

## 3.3 Carriageway Routes for post treatment

3.3.1 Given the presence of ice or snow on roads and a forecast that these conditions will last for a period longer than it would take to treat the roads, appropriate treatment may take place to cover the following:

- Priority 2 routes to be treated as resources permit when sub-zero temperatures are forecast to continue to last beyond midday, following completion of Priority 1 routes.

Priority 2 Secondary distributor roads, including B class roads not included on Priority 1 routes, local distributor roads in residential areas.

- Priority 3 Routes will be treated as resources permit when sub-zero conditions are forecast to continue over an extended period.

Priority 3 Local access roads in residential and industrial areas, minor rural through roads and C class roads not included on priority 1 or priority 2 routes. Other roads with restricted access, cul-de-sac etc. not treated during post salting actions will be treated as resources permit utilizing available and suitable special plant.

- Reported trouble spots not treated during precautionary treatment, or requests for assistance from emergency services or social services, as resources permit.

Document	Winter Service Plan 2024/25	Revision	3
WINT-1	Page 15 of 182	Date	11/11/24



## 3.4 Carriageway Routes for snow clearance

### 3.4.1 At any time the priority is as follows:

- While snow is still falling, only the Minimum Winter Network Routes (Priority 1/Snow Routes) will be ploughed and treated in order to target resources and to keep these routes open for traffic. After snow has stopped falling but is lying, the remaining Priority 1 precautionary routes will be ploughed and treated before commencing Ploughing and treatment on Priority 2 and Priority 3 routes as resources and conditions permit.
- Additional resources to be called out to plough and treat Priority 2 and Priority routes after snow has stopped or when conditions warrant.

## 3.5 Footway Routes for Precautionary Treatment

### 3.5.1 The following footways will be considered by the Head of Service – Ayrshire Roads Alliance for treatment if it is forecast that ice or snow is likely to be present on road surfaces or where surfaces are wet, with temperatures forecast to remain below zero until 10.00 the next working day.

- Priority 1 - Urban shopping areas and precincts. And other areas or pedestrian concentration, and where applicable within the Priority 1 footway route safe and reliable footway access to emergency facilities including fire and rescue, police, ambulance services and hospitals, and other public services (Schools, health centres etc.).
- Priority 1 footways will only be treated as resources permit.

Document	Winter Service Plan 2024/25	Revision	3
WINT-1	Page 16 of 182	Date	11/11/24

## 3.6 Footway Routes for Post Treatment

3.6.1 The following footways will be treated if it is forecast that ice or snow is likely to be present on road surfaces, with temperatures forecast to remain below zero over a prolonged period:

- Priority 2 – Main access routes to town and village centres, special needs of disabled people or older people where critical footway access is required. (Residential homes etc.). Known problem areas including significant gradients. Exposed areas and other topological areas.
- It is not possible with the resources to treat all of the footways. Ayrshire Roads Alliance encourages self-help through the placing of Community grit bins and other grit bins throughout the roads network and when requested, resources to community groups.

## 3.7 Routes for cycle route treatment

3.7.1 Road cycle routes will be treated along with the adjacent carriageway when resources permit. No treatment will be carried out on off-road cycle routes.

## 3.8 Response and Treatment Times for Carriageway Treatments

3.8.1 When ice is predicted to be present during the morning peak traffic flow (prediction from the previous evening's forecast) precautionary salting of routes should be completed in 3 hours from the start of treatment and before 08:00 hours.

3.8.2 For Emergency Salting and Ploughing the time between the decision to start treatment and the start of treatment will be no more than one hour except where pre- planned gritting is scheduled.

## 3.9 Response and Treatment Times for Footway and Cycle Route Treatments

3.9.1 Priority 1 footway routes should be completed in 5 hours from start of treatment and before 10:00 hours.

3.9.2 Priority 2 footway routes will be instructed for treatment as and when resources permit.

3.9.3 On-road Cycle Routes will be treated with the adjacent carriageway as resources permit.

Document	Winter Service Plan 2024/25	Revision	3
WINT-1	Page 17 of 182	Date	11/11/24

3.9.4 Where resources permit ad hoc visual footway route inspections will be undertaken and footway treatments will commence on instruction.

3.10 Allocation of plant, vehicles, equipment, and materials to routes

3.10.1 The road network is serviced by three Roads Depots located at Galston, Coylton, and Girvan.

3.10.2 The necessary resources are stored and located within these depots to treat the designated networks carriageway routes.

3.10.3 The treatment of the networks footway routes shall be undertaken by Ayrshire Roads Alliance Internal Roads Maintenance Units, East Ayrshire Councils Outdoor Services and by private Contractors.

### 3.11 Location and maintenance of grit bins

3.11.1 Approximately 729 grit bins are sited locally within the network, for self- help by the public, these bins are topped up on a monthly basis as required, and as resources permit. The number of grit bins and their locations are continually under review and the current Grit bins locations are available as noted on Ayrshire Roads Alliance web page.

3.11.2 Grit bins will only be placed at locations where the criteria within the grit bin policy (Appendix 2) are met within the network, Community grit bins are available to encourage self- help and are located within town and village Centre's. These bins will be topped up on a monthly basis as required and as resources permit. The number of Community grit bins and their locations are presently under review and the current Community Grit bins locations are available on Ayrshire Roads Alliance web page.

Document	Winter Service Plan 2024/25	Revision	3
WINT-1	Page 18 of 182	Date	11/11/24

## 3.12 Community self-assistance

3.12.1 To provide assistance and improve footway treatment resilience, over the last 6 years Ayrshire Roads Alliance have engaged with local Community Groups. We currently have 126 winter resilience groups assisting with self-help footway gritting where we provide training, salt materials, footway spreading equipment and appropriate PPE allowing groups to undertake treatments within their local areas. Requests for these resources should be made in writing to the Head of Service.

3.12.2 ARA were the proud winners of the Highways Award for Winter Resilience in October 2021.

## 4.0 Weather Prediction and Information

### 4.1 Forecasting, Patrols, and other Decision Support Information

4.1.1 The support information for use in 'Decision Making' will usually be a combination of the Road Weather Forecast, Road and Weather Monitoring Data and Patrolling of the network.

4.1.2 Ayrshire Roads Alliance have contracted a Weather Service Provider to supply forecasts for the network each day over the period 1 October to 15 May.

4.1.3 The road weather forecasts are provided via a computer link to Ayrshire Roads Alliance during the normal working day or a portable computer to the Winter Controller out with normal hours.

4.1.4 Should any problems exist with the computer systems for obtaining the weather forecast alternative arrangements are in place.

4.1.5 Four Ice Detection Outstations are installed near Corwar, Dalmellington, Dunlop and Fenwick. In addition the Alliance has access to a further 7 outstations on the Trunk Road Network and access to information from the stations is available to the Winter Controllers.

Document	Winter Service Plan 2024/25	Revision	3
WINT-1	Page 19 of 182	Date	11/11/24

4.1.6 The data available from the ice detection outstations, can be presented in both graphic and tabular format and includes:

- a) Road surface temperature
- b) Deep road temperature
- c) Air temperature
- d) Wind speed and direction
- e) Relative humidity
- f) Precipitation.
- g) Surface state (including level of salt present on road surface)

4.1.7 The Weather Service Provider has direct access to the information from these outstations, which Improves the accuracy of their forecasts.

## 4.2 Information to be provided by Forecaster

4.2.1 Specification of Forecasts Three forecasts are provided to Ayrshire Roads Alliance daily at 06:00, 12:00 and 18:00 (including weekends). Each forecast details the expected weather and road conditions for the forthcoming 36 hour period and contains the following information

- a) Details and confidence of hazards from Ice, Hoar Frost, Snow, Fog, Strong Wind and Rain,
- b) Wind speed and direction, road state, and snow depth accumulations.
- c) A 2 to 10 day forecast of expected hazards of Ice, Hoar Frost, Snow, Fog, Strong Wind and Rain with comments on the outlook.

4.2.2 The Weather Service Provider carries out 24 hour monitoring of conditions and if these vary significantly they will contact the Winter Controller directly to advice of the change and when appropriate will issue an updated forecast.

4.2.3 The Weather Service Provider provides a 24 hour consultancy service for the Winter Controller for advice and clarification of forecasts.

Document	Winter Service Plan 2024/25	Revision	3
WINT-1	Page 20 of 182	Date	11/11/24

## 4.2 Timing and distribution of information

- 4.2.4 The Winter Controller will receive the weather forecast each day at 0600hrs, 1200hrs and 1800hrs and will assess and consult on the forecast and any other relevant data and decide what action to take, if any. An instruction will then be issued to the relevant staff and external bodies detailing the action proposed.
- 4.2.5 Each morning at 0600hrs the Winter Controller will assess the forecast and make a decision for the coming 12 to 24hr period. This will allow the Depot Supervisors to plan their works for the coming day starting at 0800hrs. At 1800hrs the Winter Controller will assess the latest forecast and make adjustments (if considered necessary) to the next 12 to 24hr period. All decisions are recorded with the electronic Vaisala Manager System and are available to relevant staff at all times.
- 4.2.6 If the weather changes out-with these times the Weather Service Provider will contact the Winter Controller directly with a revised forecast.
- 4.2.7 Any amendment made to previous instructions after an update from the Weather Forecast Provider, either by phone or during the evening update will be passed to the Winter Supervisors immediately and the appropriate records updated.

## 4.3 Maintenance of ice detection equipment

- 4.3.1 Maintenance and service arrangements are in place for outstations and the appropriate repairs.

Document	Winter Service Plan 2024/25	Revision	3
WINT-1	Page 21 of 182	Date	11/11/24

## 5.0 Organisational Arrangements and Personnel

### 5.1 Organisation chart and employee responsibilities

5.1.1 The organisation of staff for Winter Service is shown on Appendix 1.

### 5.2 Employee Responsibilities

5.2.1 The Winter Controller is responsible for monitoring the road and weather conditions, for reaching an appropriate decision on treatment of the network and informing Winter Supervisors and others responsible for overseeing the works and recording the decision.

5.2.2 The Winter Supervisor is responsible for utilising and managing effectively all resources under his control i.e. labour, plant and materials to effect swift treatment of the road network. He/she will also complete all relevant paperwork timeously and update and record any alterations to decisions made.

5.2.3 The Depot Management Teams will ensure adequate resources are available for the supervisor to undertake his duties efficiently with regard to performance indicators.

5.2.4 The Winter Service Operatives are responsible for undertaking gritting duties in a safe and efficient manner. He/she shall complete all relevant paperwork for submission to the Winter Supervisor.

5.2.5 All personnel involved in the Winter Service will acquaint themselves of the duties, responsibilities and working procedures necessary for them to carry out their tasks in an effective and efficient manner.

Document	Winter Service Plan 2024/25	Revision	3
WINT-1	Page 22 of 182	Date	11/11/24



5.2.6 The contact details and numbers are listed below.

a) During Normal Working Hours:

- Risk Management Centre 03457 240 000
- Ayrshire Roads Alliance 01563 503 160

b) Out with normal working hours:

- Risk Management Centre 03457 240 000
- South Ayrshire Monitoring Station 0300 123 0900

## 5.3 Employee duty schedules, rotas, and standby arrangements

5.3.1 Special arrangements will be made to ensure the availability of trained and competent operatives and supervisory staff for the Overall Winter Period

5.3.2 A weekly rota system is in operation for the Winter Controllers, Winter Supervisors and Winter Service Operatives.

## 5.4 Additional Resources

5.4.1 During severe weather conditions the Head of Service - Ayrshire Roads Alliance may augment resources from other East Ayrshire Council Departments and/or private contractors using the externally procured Winter Maintenance Assistance Contract.

5.4.2 Labour rates will be agreed with these departments and interested private contractors prior to the onset of the winter period.

5.4.3 All contractors will supply a list of contact numbers to provide when available resources, on a 24 hours a day and 7 days a week basis.

5.4.4 Contractors will attend a Winter Service Presentation in all aspects of Health and Safety in respect to the winter service operations before being accepted as suitable service providers.

Document	Winter Service Plan 2024/25	Revision	3
WINT-1	Page 23 of 182	Date	11/11/24

## 5.5 Training

- 5.5.1 Winter Controllers and Winter Supervisors will undertake Forecast and Treatment training as provided by the Weather Service Provider.
- 5.5.2 Winter Supervisors and Winter Service Operatives will receive training on all aspects of their duties including a familiarisation exercise with all plant and procedures before the onset of the Overall Winter Period.
- 5.5.3 All Winter Service Operatives will either have an SVQ certificate in Winter Maintenance or be working towards achieving one.

## 5.6 Health and Safety Procedures

- 5.6.1 The Head of Service - Ayrshire Roads Alliance is responsible for the Health, Safety and Welfare for staff.
- 5.6.2 During winter service operations, drivers/ operatives must adhere to the following health and safety documentation:
- East Ayrshire Council Health and Safety Policy
  - Departmental Health and Safety Policy Statement
  - Health, Safety and Welfare at Work Employee Handbook
  - Activity/Risk Assessments for Individual Activities
  - Compliance with EAC Health, Safety and Welfare standards.

Document	Winter Service Plan 2024/25	Revision	3
WINT-1	Page 24 of 182	Date	11/11/24

## 6.0 Plant, Vehicles and Equipment

### 6.1 Plant, Vehicles and Equipment

- 6.1.1 The availability of vehicles and ancillary equipment is detailed in the Severe Weather Operations Plan.
- 6.1.2 The current fleet replacement program will ensure that Winter Service obligations can be met. Programmed repairs and servicing to the fleet will be carried out during the summer months. The remainder of the fleet will be inspected and serviced as per the Fleet Management Inspection and Servicing Schedule.
- 6.1.3 Global Positioning System (GPS) tracking equipment is installed in vehicles to provide accurate control of gritting and to establish accurate treatment records.

### 6.2 Location of Plant, Vehicles and Other Equipment

- 6.2.1 Ayrshire Roads Alliance vehicles will operate from the three Road Depots located at Galston, Coynton, and Girvan.

### 6.3 Garaging, servicing and maintenance arrangements

- 6.3.1 Mechanics will be available on an out-of-hours rota to maintain and repair the dedicated salting vehicles and equipment.

### 6.4 Contact and hire arrangements for Contract plant

- 6.4.1 Contract and hire companies on the East Ayrshire framework contracts will be solely hired. Only in extreme weather and emergencies conditions will other private contract and hire companies be considered.
- 6.4.2 During severe weather conditions the Head of Service - Ayrshire Roads Alliance may increase resources from other East Ayrshire Council Departments and private contractors.

Document	Winter Service Plan 2024/25	Revision	3
WINT-1	Page 25 of 182	Date	11/11/24

## 6.5 Calibration Procedures

- 6.5.1 Pre-winter checks and calibration on all vehicles, plant and equipment, used by Ayrshire Roads Alliance for Winter Service provision will be carried out by the 1 October and confirmation of their readiness to the Head of Service - Ayrshire Roads Alliance will be made by the Operations Manager. An additional calibration for winter vehicles will be undertaken during mid-season and before 31st January. Transport Services will ensure that the controls of all spreading equipment are calibrated and clearly marked for specified rates of spread up to a maximum of 40g/m<sup>2</sup>.
- 6.5.2 Salt is the principal de-icing agent used in the Roads Network and should be supplied in compliance with BS3247 (2011).
- 6.5.3 The original copies of road salt test certificates, weighbridge certificates and vehicle and equipment calibration shall be kept as part of the Ayrshire Roads Alliance Quality System to allow both internal and external auditing.

## 6.6 Fuel stocks and locations

- 6.6.1 Fuel stocks for the dedicated salt spreading and other vehicles being used for winter maintenance operations are provided at Galston Depot, Coylton Depot, Girvan Depot and Transport Depot, Crookedholm. The vehicles will remain topped up ready for immediate use. Standard East Ayrshire Council fuelling arrangements apply. Fuel stocks are remotely monitored by Transport Services on a regular basis and orders placed to ensure fuel resilience during extremeweather conditions.

Document	Winter Service Plan 2024/25	Revision	3
WINT-1	Page 26 of 182	Date	11/11/24

## 7.0 Salt and De-Icing Materials

### 7.1 Location and capacity of stocks for salt and other materials.

- 7.1.1 Salt will be held in salt barns at Galston Depot, and Coylton Depot and externally stored at Girvan Depot.
- 7.1.2 The combined quantity of salt held in stock at the start of October will be a minimum of 12,000 tonnes. The minimum stock level will be 4,400 tonnes, rising to 8,1500 tonnes in December and January (to cover the holiday period) based on level of resilience as recommended in the United Kingdom Roads Liaison Group (UKRLG) review of February 2009.
- 7.1.3 Calibrated weighbridge systems for stock control and salt usage purposes, are available at the three Roads Depots.
- 7.1.4 The depots will supply regular reports on salt usage to the Operations Manager who will monitor usage and place supplementary orders for salt as required.

### 7.2 Testing Arrangements

- 7.2.1 Salt for use during winter will meet the requirements of BS 3247 'Salt for Spreading – Coarse Rock Salt'. On request of the Head of Service – Ayrshire Roads Alliance, salt materials will be tested when delivered to confirm compliance with the specification. An additional mid- season testing of depot salt materials will be undertaken.

### 7.3 Loading Arrangements

- 7.3.1 Depot Managers are responsible for ensuring a loading shovel is available for loading the salting vehicles. A 'backup unit', in case of breakdown of the primary loading shovel should be available at the depot at all times during the Overall Winter Period.

Document	Winter Service Plan 2024/25	Revision	3
WINT-1	Page 27 of 182	Date	11/11/24

## 7.4 Pattern of Spreading

- 7.4.1 The gritters are to be set to salt a width of carriageway which will be both lanes of single carriageways or both lanes of one side of a dual carriageway.
- 7.4.2 The gritter will generally travel in the left-hand lane and the spreading pattern will be set to cover both lanes unless multiple passes are required on a wide one-way road.

## 7.5 Salt Spread Rates

- 7.5.1 The variable nature of winter conditions makes it difficult to define exact treatments and salt applications. Guidance on appropriate spread rates is given in the winter treatment matrix in the Severe Weather Operations Plan.
- 7.5.2 Sustained low temperatures occur only rarely. In this event however, account will be taken of the need to increase the rate of spread of salt. Below -11°C the action of salt is ineffective and other measures will be required e.g. introducing salt/grit mixtures.

Document	Winter Service Plan 2024/25	Revision	3
WINT-1	Page 28 of 182	Date	11/11/24

## 8.0 Operational Communications

### 8.1 Technical systems information

- 8.1.1 Good communications are essential to ensure speedy and effective response to winter conditions.
- 8.1.2 The Winter Controllers and Winter Supervisors will be issued with mobile phones with access to the internet and internal email systems.
- 8.1.3 Treatment plans and timings, ongoing actions, alterations to plans and salt usage will be recorded within electronic Vaisala Manager system. This web- based system will be accessible by all Winter Controllers and Supervisors. All information is archived by the software supplier and is held remote from the Council network.
- 8.1.4 During salting and snow clearance operations each Winter Operative has access to a mobile phone to maintain contact with Winter Supervisors and the operations depot.
- 8.1.5 All Vehicles are fitted with a Tracker and GPS system which allows the sections of road which have been treated to be clearly identified along with a time of treatment.

### 8.2 Reporting arrangements and protocols

- 8.2.1 The Winter Controller will report the 'Daily Decision' to the appropriate roads personnel and stakeholders as soon as possible after it has been reached.
- 8.2.2 The standard method of distributing the information will be via electronic Vaisala Manager system.
- 8.2.3 On request, the Winter Supervisor will prepare a daily report on the previous 24 hour road conditions and treatments, any ongoing treatments and salt usage for the Head of Service - Ayrshire Roads Alliance. The report will be required by 0845 hours daily Monday – Friday.

Document	Winter Service Plan 2024/25	Revision	3
WINT-1	Page 29 of 182	Date	11/11/24



- 8.2.4 The Winter Supervisors will record details of salt usage via the electronic Vaisala Manager system and supply separate information regarding vehicle, equipment and plant breakdowns and repair actions taken.
- 8.2.5 The Winter Supervisors will report details such as all additional plant and labour etc., hired from other Departments or Contractors, as soon as practical, to the Winter Controller.
- 8.2.6 During prolonged spells of severe conditions a decision will be made whether to set up a manned 24 hour control centre. This operational centre will be based at Gauchalland Depot. When required a Strategic Centre will be based at the Risk Management Centre who can as required liaise with South Ayrshire Monitoring Station. Throughout the treatment period, Winter Supervisors will continue to report and update to the Winter Controller on operational progress and actions taken during snow clearing operations and dealing with prolonged spells of ice.

Document	Winter Service Plan 2024/25	Revision	3
WINT-1	Page 30 of 182	Date	11/11/24

## 9.0 Information and Publicity

### 9.1 Local Press and broadcast information

9.1.1 It is important that the general public is aware of and understands Ayrshire Roads Alliance approach to the Winter Service. Publicity is to be given before the beginning of the Core Winter Period describing the level of service provision and contact points.

9.1.2 During the Overall Winter Period and particularly during prolonged spells of snow and ice information will be made available to the public by the Communications Team via:

- a) Press releases
- b) Local Radio Stations
- c) East and South Ayrshire Intranet / Web Site
- d) Motoring organizations
- e) The Head of Service - Ayrshire Roads Alliance is authorised to respond to the Press, Radio and Television on matters relating to local road conditions.

### 9.2 Publicity

9.2.1 General advice and information for the public concerning the Winter Service will be catered for by publishing a Winter Advisory leaflet which will be available to the public via Ayrshire Roads Alliance and at selected locations throughout the Roads Network, such as libraries etc.

Document	Winter Service Plan 2024/25	Revision	3
WINT-1	Page 31 of 182	Date	11/11/24

## 9.3 Other Key Local Contact Information

- 9.3.1 For information only The Head of Service - Ayrshire Roads Alliance will inform the Police Force Control and Ayrshire Civil Contingency team when snowfalls in excess of 30mm are predicted.
- 9.3.2 Reports from the Police or Risk Management Centre or South Ayrshire Monitoring Station of dangerous road conditions will be acted on as soon as practicable, when resources are available.
- 9.3.3 The Head of Service - Ayrshire Roads Alliance will consult the Police and advice the Risk Management Centre and South Ayrshire Monitoring Station when any road is closed due to winter weather conditions.
- 9.3.4 The Risk Management Centre and South Ayrshire Monitoring Station are responsible for dealing with the general public's telephone inquiries regarding the Winter Service. The Risk Management Centre has access to electronic Vaisala Manager system and other key information regarding winter service operations to enable an efficient response to public enquiries.
- 9.3.5 Risk Management Centre is in operation 24 hours a day, 7 days a week, and can be contacted on 0345 724 0000. South Ayrshire Monitoring Station is in operation 24 hours a day, 7 days a week, and can be contacted on 0300 123 0900

## 9.4 Records

- 9.4.1 Records will be retained by Ayrshire Roads Alliance for 3 years and retained in archives for a further 7 years.

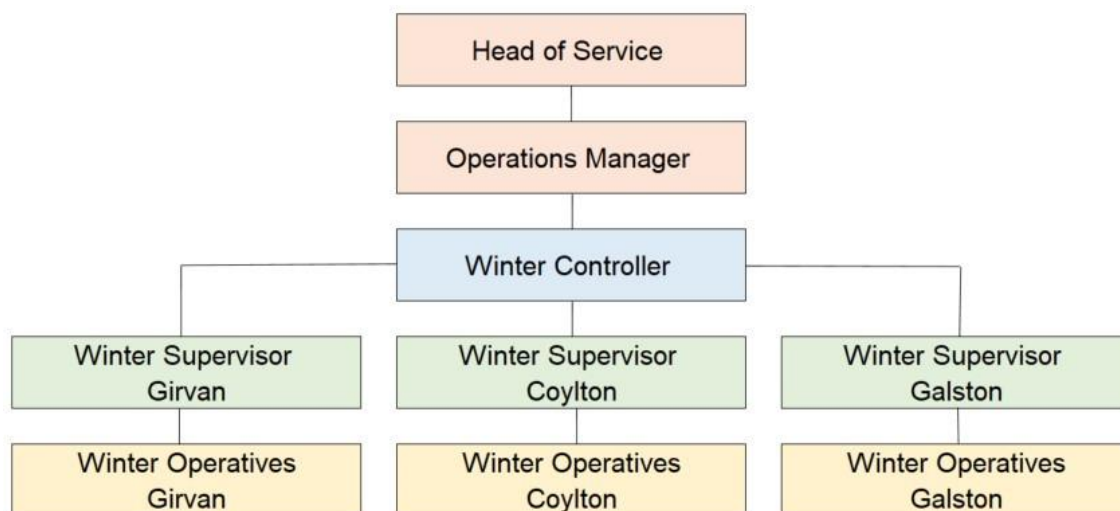
## 9.5 Responsibilities and Guidance for Providing Information

- 9.5.1 The Head of Service - Ayrshire Roads Alliance is responsible for guidance of the information to be supplied.

Document	Winter Service Plan 2024/25	Revision	3
WINT-1	Page 32 of 182	Date	11/11/24



## Appendix 1 - Winter Service Organisation Chart



Document	Winter Service Plan 2024/25	Revision	3
WINT-1	Page 34 of 182	Date	11/11/24

## Appendix 2 - Grit Bin Policy

- 1) Ayrshire Roads Alliance shall provide grit bins for self-help by members of the public. These shall be sited locally in accordance with this policy.
- 2) The location of Community grit bins and other grit bins will be recorded in an electronic database and are available on the Ayrshire Roads Alliance website.
- 3) Grit bins shall only be located where the following criteria are met:
  - a) The location is not on a precautionary carriageway route;
  - b) The gradient is greater than 1 in 15, or at a junction with a known history of accidents;
  - c) The location shall not obstruct the passage of pedestrians, a minimum of 1.5m clearance on the footway is required;
  - d) The location shall not obstruct sight lines;
  - e) The location is not within 200m of another grit bin location.
  - f) The location is within an urban area.
  - g) The location is within the boundary of the public road. The Ayrshire Roads Alliance will not provide grit bins in private areas or car parks for internal use by either the Council or any other public or private property such as schools, parks, hospitals, old people's home etc. unless a service level agreement is in place.
- 4) Grit bins will only be located where they can be filled from a lorry. The grit bins shall be replenished at the start of the Winter Period and on a monthly cycle during the Winter Period, as resources permit.
- 5) Grit bins will generally be left in place during the summer months, unless there is a history of vandalism at a particular location.
- 6) Requests for salt bins must be in writing using the application form which is also available to download from the Ayrshire Roads Alliance website.

*A request will not be accepted unless a location to site the grit bin has been agreed. Therefore, even if the criterion for locating a grit bin is met, none will be provided if the adjacent residents cannot agree a position.*

Document	Winter Service Plan 2024/25	Revision	3
WINT-1	Page 35 of 182	Date	11/11/24

## Appendix 3 - Request to Site a Grit Bin

Applications to site a grit bin can be made online using the [Ayrshire Roads Alliance Gritter Tracking system](#)

## Appendix 4 - Priority 1 Carriageway Gritting Routes

### East Ayrshire Council

Gauchalland Depot in Galston operates ten Priority 1 Carriageway gritting routes, mainly but not exclusively, confined to the north of the Council area; and includes the major towns of Kilmarnock and Cumnock.

Meadowhead Depot in Coylton operates two of the ten Priority 1 Carriageway gritting routes for the East Ayrshire area, mainly in the south of the Council area; and includes the major towns of Dalmellington and New Cumnock.

#### Method

Acting on advice received from the Council's weather service provider, Priority 1 Carriageway routes will receive precautionary treatment prior to the onset of frost / ice.

Included within the Priority 1 Carriageway routes are all A class and B class roads and strategic C class and unclassified roads.

Roads which meet the Council's criteria of precautionary treatment applied to a minimum of one road servicing council schools and emergency service depots, plus roads servicing high concentrations of employment, commercial outlets and densely populated residential areas and other roads of strategic importance are also included.

The exception to this arrangement is when the Council's weather service provider advises that there is no risk of hazardous winter road conditions in any of the two climatic domains. In this event altered routes which exclude roads in a particular climatic domain are used.

A small number of roads within residential areas may be partly treated in order to optimise a predetermined routing system.

Document	Winter Service Plan 2024/25	Revision	3
WINT-1	Page 35 of 182	Date	11/11/24





## Winter Service Plan 2024/25

Gauchalland Depot – Priority 1 Carriageway Gritting Route 1 EAST AYRSHIRE COUNCIL		
Town /Village	Road Number	Description
Galston	A719	A719 from Depot to Brewlands St Galston
Galston	-	Bridge St Galston Polwarth St Galston
-	A71	A71 Roundabout
	A719	A719 to Moscow A719 to Waterside A719 to A77
	A77	A77 to B764 Eaglesham Moor Rd
	A719	A77 from junction A719 to B778
	B778	B778 to Stewarton
Stewarton	-	Loudoun St Stewarton Holm St Stewarton Vennal St Stewarton Rigg Rd Stewarton
	A735	A735 Dunlop Rd
		Clerkland Rd
	A735	A735 to Dunlop
	A735	A735 Lugton
	A735	A730 Junction
Dunlop	-	Allanvale Dunlop Kirkland Rd Dunlop Main St Dunlop Newmill Road Dunlop C7 Dunlop Kirkland Rd Dunlop Dunlop Junction on B706 A736 Junction
Stewarton	B778	B778 to Stewarton Dalry Rd Stewarton Standalane to junction Lainshaw St Stewarton
	A735	A735 to B769 B769 to Dykehead
	C20	C20 Irvine Rd
Crosshouse to Gatehead	B751	B751 Sunnyside B751 Crosshouse B751 Gatehead

Document	Winter Service Plan 2024/25	Revision	3
WINT-1	Page 39 of 182	Date	11/11/24

Gauchalland Depot – Priority 1 Carriageway Gritting Route 1 EAST AYRSHIRE COUNCIL (Continued)		
Town /Village	Road Number	Description
	A759	A759 to B7064 Junction A759 Dundonald Road Dundonald Rd to junction at st marnock St Access to Crosshouse Nursery (Annandale Gardens) Loudoun Academy Car Park (morning patrol)
		Return to depot

Document	Winter Service Plan 2024/25	Revision	3
WINT-1	Page 40 of 182	Date	11/11/24

Gauchalland Depot - Priority 1 Carriageway Gritting Route 2 EAST AYRSHIRE COUNCIL		
Town /Village	Road Number	Description
Kilmarnock	A735	A735 Queens Drive Kilmarnock Asda Roundabout Kilmarnock Victoria Roundabout Kilmarnock Wellbeck St Kilmarnock Old Mill Rd Kilmarnock Fowlds St Kilmarnock Kings St Kilmarnock St Marnock St Kilmarnock John Finnie St Kilmarnock West George St Kilmarnock Portland St Kilmarnock Witch Rd Kilmarnock Hill St Kilmarnock Kilmaurs Road to A735 through Kilmaurs to Main St Stewarton
Stewarton		Main St Stewarton B769 Lainshaw St Stewarton Main St Stewarton High St Stewarton Dean St Stewarton Old Glasgow Rd Stewarton Windy-Yett EAC boundary
	U24	Cairn Road (U24)
	C108	C108 to Fullwood C108 to Newmill House Junction C7
	C7 C7	C7 to Neilston Boundary C7 to Clerkland Road return to C7 A735 Junction

Document	Winter Service Plan 2024/25	Revision	3
WINT-1	Page 41 of 182	Date	11/11/24

Stewarton		Lamberton Rd Ravenscraig Rd Kilwinning Rd Rigghead Rd Braemore Rd Kirkmuir Drive Kingaussie Avenue Elgin Avenue Kinloch Avenue junction of Dalry Rd Sim St
-----------	--	--

Document	Winter Service Plan 2024/25	Revision	3
WINT-1	Page 42 of 182	Date	11/11/24

Gauchalland Depot - Priority 1 Carriageway Gritting Route 2 EAST AYRSHIRE COUNCIL Continued		
Town /Village	Road Number	Description
		Lothian Rd Crusader Crescent David Dale Avenue Cutsburn Rd Pokelly Place Cutsburn Rd Jubilee Drive Cairnduff Place School Robertland Rigg Old Mill View Bowes Rigg Alisa View Junction Dunlop St New St Avenue St Springwell Place Bridgend
	C117	C117 to B751 Junction C117 to A735
Kilmarnock		John Walker Drive Dean Lane High St
		Bellfield Roundabout slip and off slip on to A71 Riccarton Road Avenue Square morning patrol Stewarton Car Park & Ride morning patrol
		Return to Depot

Document	Winter Service Plan 2024/25	Revision	3
WINT-1	Page 43 of 182	Date	11/11/24

## Winter Service Plan 2024/25

Gauchalland Depot - Priority 1 Carriageway Gritting Route 3		
Town /Village	Road Number	Description
Hurlford	B7037	B7037 to Hurlford Cross A71 Riccarton Road to Bellfield Interchange
Kilmarnock	B7038	Hurlford Rd to junction Carron Avenue Hurlford Rd Campbell St roundabout B7038 Campbell St Ayr Rd Spittallhill Farm entrance Campbell St Low Glencairn St West Shaw St McClelland Drive South Hamilton St Portland Rd Irvine Road B7081 junction of Munro Avenue Western Rd Roundabout at junction of Hill St Western Rd Bonnyton Rd Bonnyton Rd C24 West Langlands St Green St Hill St Witch Rd Western Rd B7064 Glasgow Rd B7038 Roundabout Southcraig Avenue Roundabout at Flotta Place Glasgow Rd Dalmusternock Roundabout Fenwick South Roundabout
	B7061	
Fenwick		Main Road Fenwick B778 Stewarton Rd B778 to Roundabout A77 junction

Document	Winter Service Plan 2024/25	Revision	3
WINT-1	Page 44 of 182	Date	11/11/24

## Winter Service Plan 2024/25

AYRSHIRE ROADS ALLIANCE EAST AYRSHIRE COUNCIL AREA		
Town /Village	Road Number	Description
	B751	B751 to Kilmaurs
	C75	C75 Kirkton Road (morning)
		Creashaugh Rd (morning)

Document	Winter Service Plan 2024/25	Revision	3
WINT-1	Page 45 of 182	Date	11/11/24



Kilmarnock		<p> Kilmaurs Rd  Altonhill Avenue  Kilmaurs Rd  Tourhill Rd  Onthank Drive junction  Onthank Drive  Meiklewood Rd junction  Meiklewood Rd  Craufurdland Rd junction  Craufurdland Rd  Jura Rd  Inchmurrin Rd  Fetlar Drive  Benbecula Rd  Cumbrae Drive  Davaar Drive  Inchmurrin Drive  Western Rd  Hill St  Garden St  Soulis St  Union St  Wellington St  Dean St  Beansburn  Glasgow Rd  Inchmurrin Drive  Jura Rd  Craufurdland Rd  Western Rd  Hareshaw Drive  Meiklewood Rs  Amlaird Rd  Wardneuk Drive  Hareshaw Gardens  Wardneuk Drive </p>
------------	--	---

Document	Winter Service Plan 2024/25	Revision	3
WINT-1	Page 46 of 182	Date	11/11/24

## AYRSHIRE ROADS ALLIANCE EAST AYRSHIRE COUNCIL AREA

Town /Village	Road Number	Description
Kilmarnock		Western Rd junction Wardneuk Drive Onthank Drive junction Meiklewood Rd Kirkton Rd Tourhill Rd Bus terminus junction Onthank Drive Knockinlaw Rd Western Rd Inellan Drive Campbeltown Drive Dean Rd South Dean Rd B7082 Grassyards Rd Roundabout exit Strawberry Bank Dean Lane Grassyards Rd B7082 to Junction A719 Return to depot Waterside St Car Park (morning) Foregate North (morning) Foregate South (morning) Portland St Car Parks (morning) Onthank PS (morning) Kirkstyle PS (morning)

Document	Winter Service Plan 2024/25	Revision	3
WINT-1	Page 47 of 182	Date	11/11/24

## Winter Service Plan 2024/25

### Gauchalland Depot - Priority 1 Carriageway Gritting Route 4 EAST AYRSHIRE COUNCIL

Town /Village	Road Number	Description
Galston	A719	Gauchalland Depot A719 Orchard St Titchfield St
	A71	A71 junction A71 roundabout A71 Newmilns A71 Darvel A71 Stoneyford Farm
Darvel		Kirkland Rd Patterson Terrace Hutchinson Drive Campbell St East Campbell St Burn Rd East Main St Jamieson Rd to Primary School gates Jamieson Rd to East Main St A71 to Fleming St Fleming St Edith St Dublin Rd to A71

Document	Winter Service Plan 2024/25	Revision	3
WINT-1	Page 48 of 182	Date	11/11/24

Newmilns		Mill Rd Ladeside Greenhead Greenside East Strand Campbell St West Campbell St King St A71 junction High St Drygate St Hillside Place U32 Borebrae U32 Huggincraig Rd Clearmount Avenue Mair St Bridgend Brown St Windyhill Rd Nelson St
----------	--	--

Document	Winter Service Plan 2024/25	Revision	3
WINT-1	Page 49 of 182	Date	11/11/24

Gauchalland Depot - Priority 1 Carriageway Gritting Route 4 EAST AYRSHIRE COUNCIL (Continued)		
Town /Village	Road Number	Description
Galston		Wallace St
	B7037	To B743
Mauchline	B743	To Mauchline Cross Jean Armour Drive Carrick View Beechwood Rd
	C35	C35 Tarbolton Rd
	B744	To A719
Galston		Cross St Riverside Rd Western Rd Meadowside Rd Glebe Rd Cemetery Rd Wallace St Barr St Return to depot
		Priestland bus turning area(bad weather forecast) Newmilns London Rd & Greenside Car Parks (&morning patrol) Galston Primary School drop off Western Rd (morning patrol) Galston Henrietta St car park (morning patrol) Darvel Primary School access Jamieson Rd (morning patrol)

Document	Winter Service Plan 2024/25	Revision	3
WINT-1	Page 50 of 182	Date	11/11/24

## Winter Service Plan 2024/25

Gauchalland Depot - Priority 1 Carriageway Gritting Route 5 EAST AYRSHIRE COUNCIL		
Town /Village	Road Number	Description
Galston		Portland Rd Standalane
Hurlford		A71 Hurlford Cross (Circle RA) Main Rd Crookedholm Grougar Rd
Kilmarnock		London Rd Sturrock St Armour St High Glencairn St East Shaw St junction East Shaw St Roundabout Bentinck St James Little St Titchfield St Portland St South Hamilton St Irvine Rd B7081 Haining Avenue Whatriggs Rd New St Hurlford Rd Kinlock Rd Lammermuir Rd Treeswoodhead Rd Wyvis Rd Dungavel Rd Tinto Avenue Loudoun Avenue Campsie Rd

Document	Winter Service Plan 2024/25	Revision	3
WINT-1	Page 51 of 182	Date	11/11/24

Kilmarnock		Methven Avenue Roundabout Rathlin Avenue Central Avenue Shortlees Rd Loreny Drive Knockmarloch Drive Roundabout exit Langside Avenue Blacksyke Avenue Knockmarloch Drive Blacksyke Avenue
------------	--	--

Document	Winter Service Plan 2024/25	Revision	3
WINT-1	Page 52 of 182	Date	11/11/24

Gauchalland Depot - Priority 1 Carriageway Gritting Route 5 EAST AYRSHIRE COUNCIL Continued		
Town /Village	Road Number	Description
Kilmarnock		Central Avenue Burnpark Rd Roundabout on Caprington Avenue Loreny Drive
	C8	C8 to junction Main St
Craigie		Craigie Village to Junction C119
	C119	Junction C8

Document	Winter Service Plan 2024/25	Revision	3
WINT-1	Page 53 of 182	Date	11/11/24



Kilmarnock	<p> Caprington Avenue  Central Avenue  Ayr Rd  Cunninghame Drive  Darnley Drive  Stonyhill Avenue  Elderslie Crescent  Bruce St  Witchknowe Rd  Turnberry Drive  Portland St  Hill St  Garden St  Green St  Car Park and Bus Station  Holehouse Rd  Culzean Crescent  London Rd  Walker Avenue  Alloway Avenue  Samson Avenue  Mackinlay Place  Nursery Avenue  New Mill Rd  Grassyards Rd  Strawberry Bank  South Dean Rd  Kennedy Drive  Sutherland Drive  McDonald Drive  MacCallum Place  MacPhail Drive  MacNaughton Drive </p>
------------	--

Document	Winter Service Plan 2024/25	Revision	3
WINT-1	Page 54 of 182	Date	11/11/24

Gauchalland Depot - Priority 1 Carriageway Gritting Route 5 EAST AYRSHIRE COUNCIL Continued		
Kilmarnock		MacKellar Place MacKenzie Drive MacPhail Drive Well Park Avenue
	C33	C33
Moscow		Moscow
Galston		Loudoun Avenue Holms Rd Neville Drive Holms Rd to Depot
Kilmarnock		CAR PARKS: (MORNING PATROLS) West George St Sturrock St East Sturrock St West Queens St Fowlds St St Marnock St Titchfield St Princess St EAC London Rd

Document	Winter Service Plan 2024/25	Revision	3
WINT-1	Page 55 of 182	Date	11/11/24

## Gauchalland Depot - Priority 1 Carriageway Gritting Route 6 EAST AYRSHIRE COUNCIL

Town /Village	Road Number	Description
	A719	To A76 Junction
	A71	A71 Dual C/way Moorfield RA B7064 Roundabout
	B7081	B7081 Crosshouse Roundabout Hospital Roundabout
	B7081	B7081 to Springside Boundary
	U16	U16 Thornton Rd
	A759	A759 Gatehead
	B7064	B7064 Roundabout
Kilmarnock		Dumfries Drive Neephill View
	B7064	B7064 to Irvine Rd RA B7081
	A71	A71 to Dreghorn Roundabout Moorfield
	A71	A71 Moorfield Roundabout Bellfield Interchange

Document	Winter Service Plan 2024/25	Revision	3
WINT-1	Page 56 of 182	Date	11/11/24

Kilmarnock		<p>Queen's Drive Hurlford Rd Campbell St Roundabout A71 on ramp A71 off ramp Campbell St Bentinck St Brewery Rd Lawson St Dick Rd Rennie St Elmbank St Elmbank Avenue Dick Rd Beech Avenue Roundabout Beech Avenue Pine Rd Hazel Avenue Hawthorn Square</p>
------------	--	---

Document	Winter Service Plan 2024/25	Revision	3
WINT-1	Page 57 of 182	Date	11/11/24

**Gauchalland Depot - Priority 1 Carriageway Gritting Route 6 EAST AYRSHIRE COUNCIL**  
**Continued**

Town /Village	Road Number	Description
Kilmarnock		Willow Rd Cedar Rd Olive Rd Grange Terrace Annanhill Avenue Bonnyton Rd Munro Avenue Munro Place Fullarton St Portland Rd Grange St Park St North Hamilton St Strand St Nelson St Grange Place Croft St Langlands St Old Irvine Rd Woodstock St Woodstock Place Sandbed St Bank St John Dickie St Mount Avenue Holms Rd Aird Avenue Barbadoes Rd Burnside St Holmquarry Rd Old Rd

Document	Winter Service Plan 2024/25	Revision	3
WINT-1	Page 58 of 182	Date	11/11/24

Kilmarnock		Blair Avenue Union St Academy St Cessnock Rd Liffnock Avenue Richardson Avenue Mayfield Avenue Craigie Rd Kerrmuir Avenue Dumleyhill Drive Return to Depot
------------	--	--

Document	Winter Service Plan 2024/25	Revision	3
WINT-1	Page 59 of 182	Date	11/11/24

## Winter Service Plan 2024/25

Gauchalland Depot - Priority 1 Carriageway Gritting Route 7 EAST AYRSHIRE COUNCIL		
Town /Village	Road Number	Description
	<b>A70</b>	A70 Cumnock to Cronberry to Riverside Gardens Cronberry A70 to South Lanarkshire Boundary
	B743	B743 Muirkirk to South Lanarkshire Boundary (turn at layby)
Muirkirk		Burn Ave Muirkirk Wellwood St Kirk Green Furnace Rd Henderson Dr Millar Rd Stitt Pl Pagan Walk
	B743	B743 to junction B7037
Mauchline		B743 from junct B7037 to Junct Mary Morrison Dr Mauchline
	B705	B705 to A76
		Station Rd to corner turn
	B705	B705 to Junction B713 Catrine
	B713	B713 to A76
	C50	C50 Brackenhill Rd to B7036 right to A70 ochiltree
	B7036	B7036 from C50 to Darlaw View
		Return to Depot

Document	Winter Service Plan 2024/25	Revision	3
WINT-1	Page 60 of 182	Date	11/11/24

Gauchalland Depot - Priority 1 Carriageway Gritting Route 8 EAST AYRSHIRE COUNCIL		
Town /Village	Road Number	Description
		B713 to Junction B705
		B705 to Sorn St
		Sorn St to Sloan Street
		Sloan Street to James Taylor Avenue
		James Taylor Avenue to John Street
		John Street to Sloan Street
		Sloan Street RA to Junction B705
		B705 to B713
		From B713 to Sloan Street junction James Taylor Avenue
		B705 to Auchinleck Academy
		Auchinleck Academy (access mornings only)
		B705 to Roundabout Mauchline Rd
		Mauchline Rd to A76 Roundabout
		Templeton RA off slip back
		C62 to B7036 (Barony Rd)
Auchinleck		Barony Rd to Coal Rd
		Coal Rd to Barbieston Rd
		Barbieston Road to Junction Church Street
		Church Street
		Backrogerton Crescent
		Barbieston Road to Milne Avenue
		Milne Avenue to Backrogerton Crescent
		Loupe then Milne Avenue upside
		Old Avenue to Sorn Road
		School Rd and Dalshalloch Rd (mornings only)
		Main St to Well Rd
		Well Rd to Church St
		Main St to A70 Cumnock
Cumnock		New Bridge St
		A70 to Roundabout
		Cumnock Academy Access (mornings only)
		Kerr & Smith
		Hearth Rd to Hearth PI right to Car Rd right to Cairn Rd
		to College to B7083
		Glaisnock St to Greenholm Rd
		Greenholm Rd
		Glaisnock St to Townhead St

Document	Winter Service Plan 2024/25	Revision	3
WINT-1	Page 61 of 182	Date	11/11/24



		Townhead St to Edgar Ave
		Edgar Ave to Barshare Rd loup

Document	Winter Service Plan 2024/25	Revision	3
WINT-1	Page 62 of 182	Date	11/11/24

Gauchalland Depot - Priority 1 Carriageway Gritting Route 8 EAST AYRSHIRE COUNCIL		
Town /Village	Road Number	Description
		Barshare Rd loup
		Drumbrochan Rd turn right treat Holland Cres
		Dalglish Ave to Drumbrochan Rd
		Drumbrochan Rd to Holland Cres
		Drumbrochan Rd to A70 Barrhill Rd
		Lugar St
		Hamilton Pl
		B7083 to junction B7046
		B7046 to A70
		Cumnock College to Craigens Rd
Craigens		Craigens Rd to Lamont Cres
		Lamont Cres right to Ryderston Dr
		Craigens Road to Loganhill road
		Avisyard Rd to Davaar Ave to MacIntyre Cres loup
Cumnock		Holmburn Rd to Glaisnock St
		Glaisnock St to A76
		Glaisnock Rd U719 to U720
	U719	U719
	U720	U720 Rigg Rd to B741
Logan		Loganhill Road to Logan Avenue
		Logan Ave right to Boswell Cresto Bryce Ave right to Paterson Ave
		Logangate Terrace
		Logan Ave to Glenmuir Water Rd U729
	U729	U729 to A76
		Peesweep Brae Rigg Rd
	C65	C65 to Sorn
		Return to Depot

Document	Winter Service Plan 2024/25	Revision	3
WINT-1	Page 63 of 182	Date	11/11/24

## Winter Service Plan 2024/25

Meadowhead Depot - Priority 1 Carriageway Gritting Route 9 EAST AYRSHIRE COUNCIL		
Town /Village	Road Number	Description
	B742	B742 to Junction A713
	A713	A713 to Junction B7034 Dalrymple
	B7034	B7034 to Dalrymple at Garden Street
	B742	B742 turn left treat Forglen Rd turn left treat Hill View to School
		B742 to A713
	A713	A713 to Junction B742 Coylton
Patna		A713 to Patna Dalharco Ave
		Dalharco Ave
		Dalharco Ave to Carnshalloch Ave
		Carnshalloch Ave to Whitehill Ave including RA
		Whitehill Ave to Carskeoch Dr
		Carskeoch Dr to Doonside Ave
		Doonside Ave to Whitehill Ave
		Daldowie Rd turn right Grit Dalvennan Ave
		Carskeoch Dr to Grit Blaney Ave
		Main St to Whitehill forestry Access
Dalmellington & Bellsbank		Main Street to A713
	A713	A713 from Dalharco Ave to Boundary
		B7013 to RA
		High Main St to Church Hill
		Church Hill to Melling Terr
		Main St B741 to Ayr Rd
		Merrick Drive
		Dalfarson Ave right to Ness Glen Rd right to Glen Mount
		Dalfarson Ave to Craiglea Cres
		Craiglea Cres to Merrick Dr
		Doon Academy turning area
		Gateside Rd
		Burnton
		Gateside Rd to B741
	B741	B741 High main Street to Roundabout
	B741	B741 to U720 Dalricket Rd
	U720	U720 Dalricket Rd to bridge
	B741	B741 to A76
New Cumnock		C90 to Cemetery turn (mornings only)
		Lime Rd to Greenbraes Dr to Blarene Dr

Document	Winter Service Plan 2024/25	Revision	3
WINT-1	Page 64 of 182	Date	11/11/24

		Connel View
--	--	-------------

Document	Winter Service Plan 2024/25	Revision	3
WINT-1	Page 65 of 182	Date	11/11/24

Meadowhead Depot - Priority 1 Carriageway Gritting Route 9 EAST AYRSHIRE COUNCIL Continued		
Town /Village	Road Number	Description
		Lanehead Terr to Burnton Pl
		Burnton Pl to Lime Rd
		Connel View
		Highpark Ave to Redree Pl
		Redree Pl
		Ashmark Ave to Burnton Place to right Dalhanna Dr Loch Browan Cres
		Loch Browan Cres
		Dalhanna Drive to Greenhead Rd
		Greenhead Rd to A76
		Castlemains Ave
		Holm Rd
		Mansfield Rd to haulage turning
		Travel to Depot

Document	Winter Service Plan 2024/25	Revision	3
WINT-1	Page 66 of 182	Date	11/11/24

## Winter Service Plan 2024/25

### Meadowhead Depot - Priority 1 Carriageway Gritting Route 10 EAST AYRSHIRE COUNCIL

Town /Village	Road Number	Description
	A70	A70 to A76 Cumnock
Cumnock		Holmhead Rd left to Hospital Rd right Bute Rd right Stepend Rd
		Templand Dr left Holmhead Rd right to Robbiesland Dr to Sullivan Way
		Holmhead Rd left to Oakbank Dr to Robbiesland Dr
		Holmhead Rd to Hospital Rd straight
	B7046	B7046 to B730
	B730	B730 to A713
	C89	C89 Rankinston to Roundabout
Drongan		B730 to junction Watson Terrace Drongan
		Watson Terrace to Taiglum PI
		Taiglum PI
		Lane Cres to Glenraig St
		Glenraig St to Hanniston Ave
		Hanniston Ave to DrumWhill Rd
		Mill of Shield Rd to Coronation Road to Barbieston Ave
		Littlemill of Shield Road turn left grit Carston Ave right grit Millmannoch Ave
	B730	B730 to A70 junction
		B730 to Stair
		C82 Trabbochburn Rd
		C3 to Mauchline
		C49 to ochiltree
Ochiltree		Main Street Ochiltree to Mote Toll to A70
	U728	U728 to B7046
	B7046	B7046 to B730 Sinclirston to Drongan
	A70	A70 Coalhall west bound
		Travel to Depot

Document	Winter Service Plan 2024/25	Revision	3
WINT-1	Page 67 of 182	Date	11/11/24

## Appendix 5 - Snow Carriageway Gritting Routes East Ayrshire Council

### Gauchalland Depot North Snow Route 1

SECTION	ROUTE No.	DESCRIPTION
1	<b>GALSTON</b>	<b>THE CROSS TO TICHFIELD STREET</b>
	<b>A71</b>	<b>GALSTON BYPASS TO ROUNDABOUT(CIRCLE) TO NEWMILNS TO DARVEL TO BOUNDARY</b>
	<b>DARVEL</b>	<b>BURN ROAD TO CAMPBELL ST TO JAMIESON ROAD</b> travel on A71 to Newmilns
	<b>NEWMILNS</b>	<b>HIGH ST TO KINGS ST</b> return to Galston
2	<b>B7037</b>	<b>FROM GALSTON TO B743 SORN</b> return to Galston
	<b>A719</b>	<b>A71 JUNCTION TO MOSCOW TO WATERSIDE TO A77</b>
	<b>A77</b>	<b>FROM A719 JUNCTION TO EAGLESHAM ROAD B764</b> turn and return to A719 junction
	<b>A77</b>	<b>FROM A719 JUNCTION TO FENWICK MOTORS B751</b>
3	<b>B751</b>	<b>FROM FENWICK MOTORS TO KILMAURS CROSS TO CROSSHOUSE</b>
	<b>B7081</b>	<b>CROSSHOUSE TO KILMARNOCK</b>
	<b>B7064</b>	<b>B7081 TO MOORFIELD ROUNDABOUT</b>

### Gauchalland Depot North Snow Route 2

SECTION	ROUTE No.	DESCRIPTION
1		<b>START AT DEPOT</b>
	<b>A71</b>	<b>FROM GALSTON TO HURLFORD CROSS</b>
	<b>A735</b>	<b>FROM QUEENS DRIVE KILMARNOCK TO LUGTON</b> return to Dunlop
	<b>B706</b>	<b>FROM DUNLOP TO A736 JUNCTION</b> travel on A736 to B778 Junction
2	<b>B778</b>	<b>FROM A736 JUNCTION TO STEWARTON</b>
	<b>B769</b>	<b>FROM MAIN STREET STEWARTON TO BOUNDARY CAIRN ROAD</b> return to Stewarton
	<b>STEWARTON</b>	<b>DAVID DALE AVE TO CRUSADER CRES TO KILWINNING RD</b>
	<b>B778</b>	<b>FROM STEWARTON TO FENWICK</b>
	<b>FENWICK</b>	<b>MAIN ST</b> Travel on B751 to Kilmarnock
	<b>B7038</b>	<b>FROM B751 TO KILMARNOCK</b>
	<b>KILMARNOCK</b>	<b>GLASGOW ROAD TO WESTERN RD TO MUNROE AVE TO IRVINE RD TO PORTLAND RD</b>
	<b>KILMARNOCK</b>	<b>TO DUNDONALD ROAD</b>

### Gauchalland Depot North Snow Route 3

SECTION	ROUTE No.	DESCRIPTION
1		<b>START AT DEPOT</b>
	<b>A719</b>	<b>FROM GALSTON TO CROSSROADS A76</b> travel on A76 to Bellfield roundabout
	<b>A71</b>	<b>FROM A77 BELLFIELD ROUNDABOUT TO DREGHORN ROUNDABOUT CIRCLE BACK TO BELLFIELD</b>

Document	Winter Service Plan 2024/25	Revision	3
WINT-1	Page 68 of 182	Date	11/11/24

## Winter Service Plan 2024/25

	<b>A71</b>	<b>FROM BELLFIELD ROUNDABOUT TO HURLFORD CROSS</b> turn left
<b>2</b>	<b>B7073</b>	<b>FROM HURLFORD CROSS TO LONDON ROAD KILMARNOCK</b>
	<b>KILMARNOCK</b>	<b>STURROCK ST TO ARMOUR ST TO HIGH GLENCAIRN ST TO LOW GLENCAIRN ST</b>
	<b>B7038</b>	<b>FROM CAMPBELL ST ROUNDABOUT TO A77 SLIP ROAD</b> turn and proceed to Hurlford Cross
	<b>B7073</b>	<b>FROM HURLFORD CROSS TO A76 ROUNDABOUT</b>

Document	Winter Service Plan 2024/25	Revision	3
WINT-1	Page 69 of 182	Date	11/11/24



## Gauchalland Depot South Snow Route 1

SECTION	ROUTE No.	DESCRIPTION
1	B7046	CUMNOCK TO DRONGAN
	B730	DRONGAN TO COALHALL turn back to Drongan
2	DRONGAN	MILL O SHIELD ROAD TO COYLE CRES TO CORONATION ROAD TO BARBIESTON AVE
	B730	FROM DRONGAN TO POLNESSAN (INCLUDING RANKINSTON BRAE)
	A713	POLNESSAN TO PATNA
3	PATNA	DOON BRIDGE TO CARNSHALLOCH AVE TO MAIN ST turn right A713
	A713	PATNA TO DUMFRIES & GALLOWAY BOUNDARY AT POLNASKIE BRIDGE
	A713	(Turn at Boundary) travel back on A713 to Bellsbank
4	BELLSBANK	BELLSBANK BRAE TO MERRICK DRIVE TO DALFARSON AVE TO CRAIGLEA CRES
	DALMELLINGTON	MAIN STREET TO CHURCH HILL turn and proceed to B741
	B741	DALMELLINGTON TO NEW CUMNOCK
	New Cumnock	LIME ROAD TO GREENBRAES TO BLARENE DRIVE TO DALHANNAH DRIVE
		(Return to Depot )

## Gauchalland Depot South Snow Route 2

SECTION	ROUTE No.	DESCRIPTION
1	A70	DEPOT TO SOUTH LANARKSHIRE BORDER AT GLENBUCK
		(Turn at lay-by East of Parish Holm), travel back on A70 turn right to
	B743	MUIRKIRK TO SOUTH LANARKSHIRE BOUNDARY
		(Turn at lay-by) travel back on B743 to Muirkirk
2	MUIRKIRK	WELLWOOD ST TO KIRK GREEN TO HENDERSON DR TO MILLERS RD turn right travel on A70 to
	B743	WELLWOOD TO MAUCHLINE turn left at Mauchline cross travel on A76 turn left to
	MAUCHLINE	CARRICK VIEW TO JEAN ARMOUR DRIVE TO MARY MORRISON DR TO HAMILTON AVE
3	B705	MAUCHLINE TO CATRINE
	CATRINE	NEWTON ST TO SLOAN ST TO SORN ST
	B705	CATRINE TO AUCHINLECK
	AUCHINLECK	OLD AVE TO BARBIESTON RD TO COAL RD
		(Return to Depot.)

## Gauchalland Depot South Snow Route 3

SECTION	ROUTE No.	DESCRIPTION
1	A70	CUMNOCK TO COALHALL travel on B742 to A713
	A713	BOGHALL TO POLNESSAN turn and travel to Hollybush
2	B7034	HOLLYBUSH TO DALRYMPLE
	B742	DALRYMPLE TO BOGHALL travel on B742 and A70 to Ochiltree
3	OCHILTREE	MAIN ST TO MILL ST
	B7036	OCHILTREE TO AUCHNLECK travel on B7083 to C23
4	C23	RIGG ROAD FROM B7083 TO A70 LUGAR travel on A70 to Cumnock
	CUMNOCK	DUMBROCHAN RD TO EDGAR AVE TO BARSHARE RD TO TOWNHEAD ST

Document	Winter Service Plan 2024/25	Revision	3
WINT-1	Page 70 of 182	Date	11/11/24

## Appendix 6 - Priority 2 Carriageway Gritting Routes East Ayrshire Council

### South Area Priority 2A

SECTION	ROUTE No.	DESCRIPTION
1	CATRINE	WOOD ST TO LAIGH ROAD
	MAUCHLINE	WELTON ROAD
	C3	FROM C82 JUNCTION TO B730
	C61	OCHILTREE STATION ROAD FROM B7046 TO A70
	C97	SKARES STATION ROAD FROM A70 TO B7046
2	OCHILTREE	BROOM CRES, GALLOWLEA AVE,
	U728	FROM MOAT TOLL TO B7046 JUNCTION
	C11	FROM WHITEHILL PATNA TO U765 GLASTRON ROAD
3	DRONGAN	FROM B730 TO END LOMOND VIEW THEN LOMOND CRESCENT return to B730
	DRONGAN	MILLMANNOCH ROAD FROM TAIGLUM PLACE TO PETTOCH ROAD return to B730
4	DALMELLINGTON	HOPES AVE, TO PATERSON ST, TO PARK STREET, TO CROFT ST, TO TOWNHEAD travel to
	BELLSBANK	AUCHENROY CRES, TO DALCAIRNEY ROAD, TO RECAWR AVE, TO MINNOCH ROAD TO
	BELLSBANK	HILLCREST TO MacATERICK DRIVE
	BELLSBANK	CORSERINE TERR, TO ERIFF ROAD TO MOSSDALE TERR, TO NESS GLEN ROAD
	B741	FROM DALMELLINGTON TO STRAITON

### South Area Priority 2B

SECTION	ROUTE No.	DESCRIPTION
1	AUCHINLECK	CAMERON DRIVE TO BALLOCHMYLE AVE TO GLENSHAMROCK DRIVE TO ARRAN DR, DIPPOL CR
	C22	FROM AUCHINLECK TO A70 CRONBERRY
	CUMNOCK	ROBERTSON AV TO McDONALD ST TO WARRICK DR, to HOLLAND CR, TO HALL TERR,
	CUMNOCK	TO CARR ROAD TO NANS TERR, TO HEARTH PLACE, TO HEARTH ROAD, TO JOHN BAIRD ST.
	CUMNOCK	TO KINGS WAY TO HEMMINGS WAY TO HILLSIDE VIEW TO
2	CUMNOCK	JOHN ALLAN DRIVE, TO BLACKFAULDS ROAD, TO NETHERTHIRD ROAD TO MENZIES AVE
	U729	GLENMUIR ROAD. FROM LAIGH GLENMUIR TO DALBLAIR ROAD END
	U721	DORNAL ROAD. FROM GLENMUIR ROAD END and return
	U721	DORNAL ROAD. FROM GLENMUIR ROAD TO A70
	C47	FROM MANSEFIELD ROAD NEW CUMNOCK TO A76 MARCHBURN
3	C90	FROM CEMETERY TO TURNING POINT AT CRAIGDARROCH
	U743	FROM C36 BENSTON SMITHY TO B8046 SKARES ROAD
		Return to Depot

Document	Winter Service Plan 2025/25	Revision	3
WINT-1	Page 71 of 182	Date	11/11/24

## North Area Priority 2A

SECTION	ROUTE No.	DESCRIPTION
1	KILMAURS	BENRIG AVE, TO EAST PARK DRIVE TO HABBIEAULD ROAD, TO LADESIDE ROAD
	C129	FROM A735 KILMAURS TO JUNCTION C6
	C6	FROM JUNCTION C129 TO KILWINNING ROAD STEWARTON
2	STEWARTON	CASTLEHILL ROAD, TO ARRAN VIEW, TO CUNNINGHAM WATT ROAD, TO CLERKLAND ROAD, TO
	STEWARTON	WESTBURN ROAD TO MERRYGREEN PLACE (INCLUDING TOP OF HILL)
	STEWARTON	ROBERTLAND RIGG, ANNICK CRESCENT, RIVERSIDE ROAD, GAMESHILL VIEW travel to Dunlop
	U13	AIKET ROAD
	U26	CLERKLAND ROAD FROM A735 TO C7
	DUNLOP	WEST VIEW TERRACE
3	C125	FROM B706 TO B778 TO C6
	C6	FROM STEWARTON TO TORRANYARD
	C112	FROM B769 TO A77
	C113	FROM C112 TO STEWARTON

## North Area Priority 2B

SECTION	ROUTE No.	DESCRIPTION
1	C133	NEWMILNS TO DARVEL
	DARVEL	ANDERSON DRIVE, BRAES COURT AVE, HILLVIEW ROAD
	DARVEL	DUBLIN RD (bottom part), TO MUIR DR, TO LINTMILL RD, TO WEST EDITH ST, TO NEW STREET
	DARVEL	WEST DONNINGTON ST TO EAST DONNINGTON ST TO
2	C134	JAMIESON ROAD (BOTTOM PART FROM A71 TO JUNCTION CAMPBELL STREET)
	C104	DARVEL TO NEWMILNS
	U1	FROM BROWN STREET TO U1
	NEWMILNS	CAMPBELL STREET
	U33	WOODHEAD ROAD
	U3	FOULPAPPLE – ALSTONPAPPLE FROM NEWMILNS TO DARVEL FULL LENGTH
3	GALSTON	HENRIETTA ST, TO MAXWOOD RD, TO CAIRN VIEW, TO BELVEDERE VIEW TL TO CAIRN TERRACE
	GALSTON	COMPLETE BELVEDERE VIEW AND DUKE STREET TO B7037
	GALSTON	TO BARWOOD ROAD TO CATHERINE DRIVE TO MILRIG CRES.
	C53	FROM A719 FIVEWAYS TO TREESWOODHEAD ROAD KILMARNOCK
	C120	FROM A759 GATEHEAD TO B7038 SPITTALHILL
	U61	FROM B7038 TO INCHGOTTRICK FARM
	C66	FROM A719 TO C85 WATERSLAP
	C75	FROM RAITH ROAD FENWICK TO C66 JUNCTION
	C85	FROM FENWICK TO C10
	KILMARNOCK	BALMORAL ROAD
	KILMARNOCK	SIMONSBURN ROAD AND UMBERLY ROAD
	KILMARNOCK	SAMSON AVENUE AND GARVEN COURT

Document	Winter Service Plan 2024/25	Revision	3
WINT-1	Page 72 of 182	Date	11/11/24

## Appendix 7 - Priority 3 Carriageway Gritting Routes East Ayrshire Council

### North Route 1 Priority 3

SECTION	ROUTE No.	DESCRIPTION
		Gauchalland Depot travel C6 Stewarton
1	DUNLOP	WEST VIEW TERRACE, THE FIELDING, LIVINGSTON TERRACE, GLAZERT ROAD, BURNS WAY, WOODSIDE PLACE
	DUNLOP	SOLOMONS VIEW
	KILMAURS	EAST PARK CRESCENT, BOYDORR CRESCENT, CARMEL PLACE, WEST PARK CR, BEAUFIELD GRD, LADESIDE GRDNS
	KILMAURS	VINE PARK AVENUE, VINE PARK DRIVE, GLENCAIRN TERRACE, MILLHILL AVE, CATHERINE PLACE, FOURACRES DR
	KILMAURS	STANDALANE, YARDSIDE ROAD, CROFTHEAD ROAD, LANGMUIR QUADRANT, BELLISLAND CRESCENT, SHAW ROAD
2	KILMAURS	MARSHALL GARDENS, TOWERHILL AVENUE, KIRKTON AVENUE, KNOCKLANDHILL, HILLMOSS
	KNOCKINTIBER	CASTLE VIEW TO HEMPHILL VIEW TO PLANN ROAD
	U45	KIRKLAND ROAD FROM KNOCKENTIBER TO NORTH AYRSHIRE BOUNDARY
	U57	BUSBIE MAINS ROAD FROM C20 IRVINE ROAD TO NORTH AYRSHIRE BOUNDARY
	CROSSHOUSE	CROSSDENE ROAD, SPRINHILL AVE, CREDON DR, HUNTER ROAD, THORNTON AVE, CRAIGLEA AVE, LAURIELAND AVE
	CROSSHOUSE	WOODBANK RD, WOODLEA COURT, ANNANDALE VIEW, ANNANADALE CRES, PADDOCK VIEW (Thorntoun Estate)
	U18	CARMELBANK ROAD FROM B751 CROSSHOUSE TO U16 GATEHEAD
	U51	NETHERCRAIG ROAD FROM U16 to end
	U11	STACKLAWHILL ROAD FROM C6 TO C20
	U12	BANKEND-AULTON ROAD FROM C6 TO C20
3	U13	AITKET ROAD FROM B706 TO B778
	U26	CLERKLAND ROAD FROM A735 TO C7
	U27	STRUTHERS ROAD FROM C7 TO C100
4	U39	GOUKNEST ROAD FROM B778 TO A735
	U46	LANGTON ROAD FROM B706 TO A735

### North Route 2 Priority 3

SECTION	ROUTE No.	DESCRIPTION
		Gauchalland Depot travel to Stewarton
1	STEWARTON	MORTON ROAD TO FLEMING DRIVE TO LOTHIAN ROAD (PART) TO McBETH ROAD TO KILBRIDE ROAD
	STEWARTON	MONTGOMERIE DRIVE
	STEWARTON	TO COCKLEBIE ROAD TO KINLOCH AVE TO ELGIN AVENUE TO KIRKMUIR DRIVE (PART) TO CORSEHILLBANK STREET
	STEWARTON	EGLINTOUN ROAD TO BALVENY COURT TO LANGSHAW COURT TO LOCHRIG COURT TO GRAHAM TERRACE TO
	STEWARTON	GILMOUR STREET TO THE CRESCENT TO HAMILTON PLACE TO VICTORY WAY TO DARLINGTON VIEW TO
	STEWARTON	JUBILEE RISE TO VICTORIA COURT TO
2	STEWARTON	NETHERLAND ROAD TO GAMESVHILL VIEW TO ANICK CRESCENT TO RIVERSIDE ROAD TO KIRBY GLEBE
	STEWARTON	AILSA VIEW, ARMOUR PLACE, BONNET COURT, EWING WAY, KERSLAND GAIT, STANE BRAE, DRAFFEN MOUNT

Document	Winter Service Plan 2024/25	Revision	3
WINT-1	Page 73 of 182	Date	11/11/24

## Winter Service Plan 2024/25

	STEWARTON	CAULDHAME RIGG,FAIRWAYS,HOLMHEAD DRIVE, ANNICKBANK,CAIRN CLOSE,DORNIE CLOSE
3	STEWARTON	LAMBERTON ROAD, CASTLEHILL ROAD BOWMAN PLACE, KIRKMUIR ROAD,BRAEMORE ROAD,ARRAN VIEW
	STEWARTON	CUNNINGHAM-WATT ROAD ONTO CLERKLAND ROAD travel to WESTBURN ROAD ONTO MERRYGREEN PLACE to
4	C108	From B769 Junction to FULLWOOD TO BOUNDARY return to C7 turn right to U21 junction
	U21	BROCKWELLMUIR ROAD From C7 to A735 turn left on A735 to Dunlop
	C100	FROM DUNLOP TO BOUNDARY turn left to Dunniflat
5	U28	DUNNIFLAT FROM BOUNDARY TO U89 HALKET
	U89	HALKET ROAD FULL LENGTH

Document	Winter Service Plan 2024/25	Revision	3
WINT-1	Page 74 of 182	Date	11/11/24

## North Route 3 Priority 3

SECTION	ROUTE No.	DESCRIPTION
		Travel to Kilmarnock
1	KILMARNOCK	WOODHILL ROAD, ST MAURS CRESCENT, ASHDALE AVENUE, BLUEBELL DRIVE, HEATHER COURT, SHISKINE DR
	KILMARNOCK	AUCHENCAR DRIVE, CORDON RD, MACHRIE ROAD, JOHN WALKER DRIVE, TALISKER AVE, CARDHU CR, NEWLANDS DR
	KILMARNOCK	TOBERMORY DRIVE, DALMORE ROAD, GLENKINCHIE ROAD
	KILMARNOCK	BRINGHAM ROAD, GLASSOCK ROAD, MUIREND ROAD, BURNFOOT PLACE, MORVEN AVENUE, ARDGOUR ROAD,
2	KILMARNOCK	ARDBEG AVENUE, TITWOOD DRIVE, REDDING AVENUE, TODHILL AVENUE, RAITHBURN AVENUE, THORN TERRACE
	KILMARNOCK	KINGSWELL AVENUE, CROFTHEAD AVENUE, BRACKENHILL AVENUE, ORKNEY DRIVE, KIRKWALL PLACE,
	KILMARNOCK	STRONSAY PLACE, FARANSAY PLACE, AILSA PLACE, RONA PLACE, ERISKAY PLACE, IONA PLACE, CUTHBERT COURT
	KILMARNOCK	SHETLAND DRIVE, ARRAN AVENUE, MANOR AVENUE, ROWALLAN DRIVE, GLENCRAIG DRIVE, MUIREND PLACE
3	KILMARNOCK	MOSSIDE PLACE, LEVEN AVE, STAFFORD STREET, POTTERY PLACE, BATH STREET, MONTGOMERY STREET
	KILMARNOCK	BALMORAL ROAD, BURNS AVE, LANDSBOROUGH DRIVE, DUNOON AVE, ROTHSAY PLACE, DEANHILL LANE
	KILMARNOCK	GRAITHNOCK DR, McILVANNEY DR, McILVANNEY CR, ORCHARD ST, BLAIR ST, THOMSON ST, DANNY COFFEY AVE
	KILMARNOCK	NORTHCRAIG RD, HILLPARK DR, CAMPBELL TOWN DR, TOWNHOLM, HARRIET RD, HIGHFIELD AVE, CLAY CR,
	KILMARNOCK	ALEXANDER Mc LAREN GARDENS, THOMAS BAIRD GARDENS, JOHN KENNEDY PLACE, HILLHEAD SQ,
	KILMARNOCK	ARCHIBALD CRAIG PLACE, DE WALDEN DRIVE, FORREST GROVE, FAILFORD PLACE, GROUGAR DRIVE, CASTLE DR
4	KILMARNOCK	JOHN BURTT PLACE, INVERCLOY PLACE,
	FENWICK	CREELSHAUGH ROAD, GLEBE TERRACE, KIRKTON PLACE, POLES ROAD, DUNLOP STREET, MURCHLAND AVENUE,
	FENWICK	BRAEHEAD ROAD, MAUNSHEUGH ROAD, HOLMES CRESCENT, GLENCRAIG TERRACE, RYSLAND DRIVE
	FENWICK	BLACKFAULDS DRIVE, SKERNIELAND ROAD, FOWLDS VIEW, FULTONS CRESCENT, BROOKFIELD GROVE
	U64	GAINHILL ROAD FROM MAIN STREET FENWICK TO B778
	U54	TANNACRIEF ROAD FROM B778 TO B751 NEAR MEIKLEWOOD
5	WATERSIDE	MILL WYND FROM A719 TO CUL DE SAC
	U47	LITTLERAWS ROAD FROM C33 TO C10
	U44	OXENSHAW ROAD FROM A719 TO C66
	U40	HARESHAWMOOR ROAD A719 WATERSIDE TO END
6	U41	RUSHAW ROAD FROM A719 MOSCOW TO END
	U42	HEMPHILL ROAD FROM A719 TO U41
	U15	ASSLOSS ROAD FROM GLASGOW ROAD TO U65

## North Route 4 Priority 3

SECTION	ROUTE No.	DESCRIPTION
		Start Galston
1	GALSTON	AYR ROAD, GATESIDE ROAD, MILRIG CRESCENT, LOUDON AVENUE, LADYTON DRIVE, BOYD STREET, CHAPEL LANE
	GALSTON	BARRMILL ROAD, BLAIR STREET, DUKE STREET, BENTINCK STREET, BLAIR CRESCENT, SUTHERLAND TERRACE,
	GALSTON	CASTLEVIEW AVENUE, SORN PLACE, BURNAWN PLACE,
	GALSTON	MARGARET AVE, MILLANDS ROAD, NEW ROAD, ANDREW LUNDIE PLACE, CESSNOCK PLACE, CLOCKSTON RD
2	C103	B744 TO B7037
	C104	B7037 TO NEWMILNS
3	NEWMILNS	STONEYGATE ROAD, STRATHOME TERRACE, RIVERBANK STREET, SHIELDS ROAD, QUEENS CRESCENT,
	NEWMILNS	MURE PL, IRVINE ROAD, LOUDON ROAD WEST, LAWRIE ST,
	NEWMILNS	GILFOOT, GIRVAN ST,
	NEWMILNS	BROWNS ROAD, BRAEHEAD ROAD, BURN ROAD, MILL CRESCENT, UNION STREET
4	DARVEL	DUBLIN ROAD, GLENBRIG, MURDOCH ROAD
	DARVEL	JAMESON ROAD (TOP PART), EAST & WEST DONNINGTON ST, WOODBURN CT, GILLILAND RD, LOUDOUN CT
	DARVEL	WEST EDITH STREET, FLEMING STREET, MUIR DRIVE, LINTMILL ROAD, BURNBANK STREET, MAIRS ROAD
	DARVEL	DRUMCLOG CRESCENT, GLEN CRESCENT, GREENBANK ROAD, GEORGE YOUNG DRIVE, ROXBURGH GARDENS
	DARVEL	DYKES COURT, LANFINE VIEW, MORTON PARK DRIVE, DALQUHARN ROAD, COUNTRESS STREET, TEMPLE STREET,
	DARVEL	GREEN STREET, IRVINEBANK ROAD, ROBERTSON GARDENS, JOHN MORTON CRESCENT, CAUSEWAY ROAD
5	U2	BRANSFIELD ROAD FROM DARVEL TO END
	U3	FOULPAPPLE FROM C133 JUNCTION TO DARVEL
	U4	LADYBROW ROAD PRIESTLAND TO LOUDONHILL
	U5	PASFORD AND YONDERCROFT ROAD FROM A71 TO BOUNDARY
	U8	BROOMHILL ROAD FROM DARVEL TO BOUNDARY
	U7	FROM A71 TO SOUTH LANRKSHERE BOUNDARY
	C135	ALLANTON PLAINS
	U9	WINDSHIELDS FROM U3 LITTLE GLEN TO U8 BROOMHILL
	U22	BURNFOOT ROAD FROM U3 TO END
	U30	EAST NEWTON ROAD FROM A719 TO U33
	U55	THREEPWOOD ROAD FROM B7037 TO U56
	U56	BOGEND AND MIDDLEFIELD ROAD FROM U1 TO B7037

Document	Winter Service Plan 2024/25	Revision	3
WINT-1	Page 75 of 182	Date	11/11/24



## North Route 5 Priority 3

SECTION	ROUTE No.	DESCRIPTION
1	KILMARNOCK	WILSON AVE, MELVILLE STREET, CAMERON DRIVE, BARCLAY DRIVE, FINDLAYSON DRIVE, LINDSAY DRIVE,
	KILMARNOCK	ANDERSON PLACE, DRUMMOND PLACE, BANNERMAN DRIVE, KERR ROAD, LOCH VIEW, RANKIN COURT, DEAN VIEW
2	KILMARNOCK	WILLIE ROSS, SINCLAIR COURT, HUNTLY PLACE, BAIRD PLACE, LESLIE PLACE, FORBES PLACE, DUNBAR DRIVE
	KILMARNOCK	KAY PARK TERRACE, KAY PARK CRESCENT, McLEAN DRIVE, McGREGOR DRIVE, McEWAN PLACE, McKINNON DRIVE
3	KILMARNOCK	McLEOD DRIVE, McLAREN PLACE, DUNURE DRIVE, GREENAN ROAD, WELLPARK GROVE, MACANDREW GARDENS
	KILMARNOCK	MILTON DRIVE, MILTON ROAD, MILTON AVE, OLIPHANT DRIVE, COTTER DRIVE, SOUTER DRIVE, MOSSGIEL AVE
4	KILMARNOCK	ELLISLAND DRIVE, BRAEHEAD COURT, BRAESIDE STREET, LOANHEAD STREET, ELMBANK DRIVE, GLEBE AVE
	KILMARNOCK	GLEBE ROAD, NEW MILL ROAD, GLENAPP QUADRANT, LINFERN AVE, SPARROW GARDENS, OSPREY DRIVE
	KILMARNOCK	BUNTING PLACE, NURSERY GARDENS, GILMOUR STREET, ST ANDREWS STREET, NURSERY STREET, DOUGLAS STREET
	KILMARNOCK	WEST NETHERTON STREET, GLENFIELD PLACE.

## North Route 6 Priority 3

SECTION	ROUTE No.	DESCRIPTION
		Travel to Kilmarnock
1	KILMARNOCK	PEACE STREET, STEVENSON STREET, GIBSON STREET, YORK PLACE, DAVID ORR STREET, CAIRN TERRACE
	KILMARNOCK	LENNOX CRESCENT, STIRLING AVE, WAVERLY AVE, ALMOND PLACE, ALDER PLACE, WARWICKHILL ROAD
	KILMARNOCK	BUSBIEHILL PLACE, CARMEL AVE, SANNOX ROAD, SOUTHOOK ROAD, GLEN ORRIN AVENUE
	KILMARNOCK	GLEN FARRAR WAY, MOORFIELD AVENUE, WOODSIDE AVENUE, FAIRLIE AVENUE, HOLMES CR, STRATHLEA CR
2	KILMARNOCK	MOUNT PLACE, HAPERLAND DRIVE, ARROTHILL DRIVE, BLACKWOOD AVENUE, HOLMLEA DRIVE, SORN ROAD
	KILMARNOCK	McCLELLAND DRIVE, WALLACE STREET, HOWARD PARK DRIVE, MEWS LANE SOUTHOOK ROAD,
3	KILMARNOCK	PORTER DRIVE, GAGIESTON DRIVE, SCOTT ROAD, ROWANHILL PLACE, ELLIS STREET, SEAFORD STREET
	KILMARNOCK	, WESTMOOR CRESCENT, HOLMLANDS PLACE, JAMES SYM CRESCENT,
	KILMARNOCK	SMILLIE PLACE, LABURNUM ROAD, CHERRY ROAD, WALNUT ROAD, JASMINE ROAD, LAUREL PLACE, RUGBY ROAD
4	KILMARNOCK	RUGBY CRESCENT, SPRINGHILL PLACE, CHARLES STREET, CHARLES STREET, CHARLES PLACE, HOWARD STREET
	U35	FARDALEHILL ROAD FROM BONNYTON TO KNOCKINTIBER
	HURLFORD	WALDEN ROAD, MORRIS CRESCENT, KERSLAND CRESCENT ROXBURGH ROADS, BLAIR ROAD, BLAIR CRESCENT
	HURLFORD	LEVEN DRIVE, LOMOND AVENUE, CESSNOCK DRIVE, CESSNOCK AVE, KNOWEHEAD ROAD
5	HURLFORD	BARWELL DRIVE, FURNACE COURT, PORTLAND COURT, PORTLAND BRAE, MARCHMOUNT COURT, HOLYOAKE COURT
	CROOKEDHOLM	SERIGHT SQUARE, SERIGHT CRESCENT, RALSTON DRIVE, STRUTHERS AVENUE
	U37	MILTON ROAD FROM KILMARNOCK TO A719
	U38	LANGLANDS ROAD FROM C33 DYKESCROFT TO U37 MILTON ROAD
	U34	FAIRYHILL ROAD FROM DUNDONALD ROAD TO HOLMES ROAD
	U36	GATESIDE ROAD FROM U37 TO A719
	C127	FROM HURLFORD TO A719

## North Route 7 Priority 3

SECTION	ROUTE No.	DESCRIPTION
		Travel to Kilmarnock
1	KILMARNOCK	ARDLE AVENUE, LUCE AVENUE, GARNOCK ROAD, TWEED CRESCENT, LAWERS CRESCENT, CROMDALE ROAD
	KILMARNOCK	CAMPSIE ROAD DUMGOYNE ROAD, KINNOULL ROAD, GRAMPIAN ROAD, ESK ROAD, DEE AVENUE, NEVIS PLACE,
	KILMARNOCK	LOMOND ROAD, DUNGAVEL ROAD, BROOMHILL QUADRANT, TURNBERRY DRIVE, MOSSHEAD ROAD,
	KILMARNOCK	CRAIGIE ROAD, GATESIDE PL, TREESBANK RD, LAINSHAW AVE,
2	KILMARNOCK	PEATLAND QUADRANT, BRIDGEHOUSEHILL ROAD, COMMONHEAD ROAD, SHORTLEES CRESCENT
	KILMARNOCK	BURNPARK ROAD, EARLSTON AVENUE, SUNNYSIDE ROAD, TOWNEND ROAD, MARCHDYKE CRESCENT, STAFFLER DRIVE
	KILMARNOCK	HURLFORD SERVICE ROAD, STRATHY PLACE, CESSNOCK PLACE
	KILMARNOCK	INCHGOTRICK ROAD, SCARGIE ROAD, SIMONS CRESCENT, KELBURN CRES, LOCHGREEN PL, CRAIGIE AVENUE,
3	KILMARNOCK	KEN ROAD, SPEY AVENUE, CAIRNGORM ROAD, LEADHILLS ROAD, PENTLAND ROAD, LAWERS ROAD, LOCHNAGER ROAD,
	KILMARNOCK	WITHKNOWE AVENUE, UNDERWOOD PLACE, BALGRAY AVENUE, LANGSIDE AVENUE, KINLOCH RD, DEVERON RD
	KILMARNOCK	JEFFREY STREET, WALLACEHILL ROAD, MAXHOLM ROAD, BARNWELL ROAD, GRANGER ROAD, PICKEN STREET
4	SOUTHCRAIGS	STEWARTON DRIVE, WALLACETOWN AVENUE, CROSS PLACE, EDAY CRESCENT, BURNS CRESCENT
	SOUTHCRAIGS	UIST LANE, STORNAWAY DR, PORTREE AVE, BURRA DR, WESTRAY DR, DUNSKEY RD, DARVEL AVE, NEWMILNS GARDENS

Document	Winter Service Plan 2024/25	Revision	3
WINT-1	Page 76 of 182	Date	11/11/24

## Winter Service Plan 2024/25

	SOUTHCRAIGS	WESTFIELD ROAD,COLONSAY PLACE,WESTRAY,BOYDSTON WAY,GALSTON PLACE,PRIESLAND CLOSE,							
	SOUTHCRAIGS	NEWMILNS GARDENS,FAIR ISLE PLACE,LERWICK PLACE							
	CRAIGHALL	CRAIGHALL BANK,CRAIGHALL CRESENT,CRAIGHALL ROAD							
5	U50	MOSSIDE ROAD FROM B751 TO B7038							
	U59	EAST HILLHOUSE ROAD FROM A77 TO C119							
	C119	FROM SOUTH AYRSHIRE BOUNDARY TO C53 FIVEWAYS							
	U60	DITTON ROAD FROM C120 TO BOUNDARY							
	U63	WHEATRIGGS ROAD FROM A76 TO A77							

Document	Winter Service Plan 2024/25	Revision	3
WINT-1	Page 77 of 182	Date	11/11/24



## South Route 1 Priority 3

SECTION	ROUTE No.	DESCRIPTION							
		Travel from Depot to							
1	C123	FROM B730 JUNCTION TO C124 MOAT TOLL							
	OCHILTREE	KNOWE VIEW , GLEBE CRESCENT, POOLE AVE, STEWART AVE, DOUGLAS BROWN AVE, proceed to Catrine							
	CATRINE	BALLOCHMYLE QUADRANT, FOURFIELDS, ALLAN DRIVE, HILLSIDE, SOMMERVILLE STREET, SHAWLANDS STREET							
2	CATRINE	MONTGOMERIE STREET, BLACKWOOD AVE, GAMES HALL, ST CUTHBERTS STREET, MILL SQUARE							
	CATRINE	BRIDGE LANE, FORD STREET, BALLOCHMYLE VIEW, GORDON STREET, AYR STREET,							
	SORN	FIR PARK, ANDERSON DRIVE, WOODLANDS ROAD							
3	U76	BLACKSIDE FROM DYKENEUK TO END OF ROAD							
	U722	DYKENEUK FROM B7037 TO B743 SORN							
	U79	BROCKLAR FROM DYKENEUK TO B743							
	MAUCHLINE	, COWGATE, CARRICK VIEW,							
	MAUCHLINE	BEECHWOOD ROAD, SUNNYSIDE CRESCENT, HUGHFIELD ROAD, LOCH ROAD, CASTLE STREET, THE KNOWE							
4	MAUCHLINE	MANSEFIELD ROAD, LOANHILL AVE, MOSSGIEL AVE, ALEXANDER TERRACE, AULD AVE, BALLOCHMYLE AVE,							
	MAUCHLINE	LOCHLEA AVE, GREGORY STREET, FERNLEA AVE, SOUTHFIELD AVE, EAST PARK AVE, NETHER WALK, ARRAN VIEW,							
	MAUCHLINE	Clarinda Cres, Nether Walk, East park Ave, Netherplace Quadrant							
	MAUCHLINE	CONNEL CRES, WHITEFORD PLACE, GRASSMILLEES WAY							
	MAUCHLINE	CONNEL CRESCENT, WESTPARK AVENUE DONALDSTON CRESCENT, BEECHGROVE ROAD proceed to Hilltop							
	U732	HAUGH ROAD FROM STATION ROAD MAUCHLINE TO C50 JUNCTION travel on B7036 to Mauchline Road Ochiltree							
5	U742	MOSSIDE ROAD FROM HAUGH ROAD TO B743							
	U735	OLD HOWFORD FROM A76 CATRINE TO A76 MAUCHLINE							
	U712	CLEWS ROAD FROM HAUGH ROAD TO OLD HOWFORD ROAD							
	CUMNOCK	BANK AVE, BANK GLEN, KEIR HARDIE HILL, JOHN BAIRD ST, ELIZABETH CR, LINK RD,							
6	CUMNOCK	WYLIE CR, McCALL AVE, MITCHIE ST, HERDSTON PL, GEMMILL AVE, LATT A CR, SHANKSTON CR,							
	CUMNOCK	MARKET LANE, GREENHOLM ROAD, RICHMOND TERRACE, GREY ST, EMRYS AVE							
	CUMNOCK	GLENLAMONT, GLENCAIRN, GLENRAMSKILL AVE, McQUEEN AVE, HILLSIDE VIEW, HORSECEUGH CLOSE.							

## South Route 2 Priority 3

SECTION	ROUTE No.	DESCRIPTION							
		Travel from Depot to							
	AUCHINLECK	CAMERON DRIVE, BALLOCHMYLE AVENUE, GLENSHAMROCK DRIVE							
	AUCHINLECK	BEECHWOOD AVE, BOSWELL DRIVE, HIGHHOUSE VIEW, RUNNELS VIEW, PENNYLANDS VIEW, SCHOOL ROAD							
1	AUCHINLECK	LAMBFAIR GARDENS, STONER CRESCENT, HEATHFIELD ROAD, DARNCONNER AVE, AIRD AVE, PEDEN DRIVE							
	AUCHINLECK	QUARRYKNOWE, MILNE AVE, JUDGE AVE, TALBOT DIVE, MILNE AVE proceed to Muirkirk							
	MUIRKIRK	THE STYLE, FURNACE RD, COLTHART DR, MILLAR ROAD (PART), LAPRAIK DR							
	MUIRKIRK	HAREWOOD AVE, SMALLBURN DRIVE, SHAWKNOWE AVE, GARPEL AVE, LOVEDALE CRESCENT,							
2	MUIRKIRK	MEANLOUR SDRIVE, HARESHAW CRESCENT, PARK AVE, MIDDLEFIELD DRIVE, GARRONHILL travel on B743 to							
	U724	GARPEL ROAD. FROM B743 TO END OF ROAD							
	U731	GREENOCK WATER. FROM B743 TO A70 travel back on B743 to Sorn							
	U749	SMIDDYSHAW. FROM B743 SORN TO B713 proceed to C65							
3	U748	HEILER. FROM C65 TO END OF ROAD turn and proceed to C65							
	U733	HIGH LOGAN. FROM C65 TO B705 proceed along B705 to							
	U730	GLENSHAMROCK. FROM B705 TO C23							
	CUMNOCK	HOYLE CR, LORIMER CR, HUNTERS WAY, BANEFIELD AVE, OAKBANK DR (PART), BROOMFIELD AVE,							
4	CUMNOCK	TERRINGZEAN VIEW, ROSEBURN DRIVE, KYLE COURT, HOLM, HOLMSIDE							

Document	Winter Service Plan 2024/25	Revision	3
WINT-1	Page 78 of 182	Date	11/11/24

## South Route 3 Priority 3

SECTION	ROUTE No.	DESCRIPTION
		Travel from Depot to Drongan
1	DRONGAN	CARSTON AVE, MAINSFORD AVE, HANNAHSTON AVE(PART), GLENCRAIG ST(PART), CAIRNSTON AVE,
	DRONGAN	LOMOND VIEW, LOMOND CR, CRAUFURD DR, MARGARET DRAIN CR, FARRELL CR, WATSON TERR (PART)
	DRONGAN	TRYSTING TERRACE, BETTOCK ROAD, HODGE CRESCENT, AILSA CRAIG VIEW, CORRIE PLACE, TRUESDALE CR,
	DRONGAN	LADIES WALK AVENUE, GARROWHILL DRIVE, SCHAW AVENUE, COYLE AVE, STAIR DRIVE, BONNYTON AVENUE.
2	U741	MILLMANNOCH. WATSON TERRACE DRONGAN TO SOUTH AYRSHIRE BOUNDARY to
	U740	FROM SOUTH AYRSHIRE BOUNDARY(3T WEIGHT LIMIT BRIDGE) to LADIES WALK AVENUE DRONGAN to Dalrymple
	U738	MARTNAHAM. FROM A713 HOLLYBUSH TO C21 DRONGAN
3	DALRYMPLE	MERKLAND DRIVE, ROBERTSON PLACE, BARBIESTON TERRACE, SKELDON DRIVE, SKELDON CRESCENT,
	DALRYMPLE	PORTLAND ROAD, BIRCH AVENUE, SEATH DRIVE, CHURCH STREET, GLEBE AVENUE, RIVERSIDE TERRACE,
	DALRYMPLE	PRIMPTON AVENUE, PURCLEWAN COURT, DOONVALE AVENUE, MORTON DRIVE, FULTON PLACE.
4	U756	SKELDON MILL FROM B7034 TO END
	U757	GLENAMMER. FROM B7034 TO B742
	U758	GLASTRON. FROM B7034 TO SKELDON BRIDGE
	U745	PERCLEWAN MILL. FROM B742 TO DUSTYHALL A713 travel back to B7046 Sinclairston
	U74	BARDARROCH. B7046 SINCLAIRSTON TO A70 KILLOCH travel back to Depot
	U717	CREOCH FROM A70 TO C123
	U714	CAWHILLAN FROM C123 TO C49
	C2	FROM B730 TO SOUTH AYRSHIRE BOUNDARY
	C116	FROM SOUTH AYRSHIRE BOUNDARY TO B730

## South Route 4 Priority 3

SECTION	ROUTE No.	DESCRIPTION
		Travel from Depot to Patna
1	PATNA	DALLOWIE RD, HILLSIDE, STEWART PLACE,
	PATNA	CARNSHALLOCH AVENUE (PART), HILLSIDE (PART) DOONBANK CRESCENT,
	PATNA	DOWNIESTON PLACE, DRUMBUIE DRIVE, KILMEIN AVENUE, BARNSHEEN AVENUE, MEIKLEHOLM DRIVE,
	PATNA	NETHERHILL CRESCENT, DUNASKIN VIEW, KEIRS CRESCENT proceed on A713 to Dalmellington
2	DALMEL/TON	ARMOUR WYND, BURNTON VILLAGE, C91 TO CRAIGMARK INN, KNOWEHEAD, BRADDON AVE,
	DALMEL/TON	DALTON AVENUE, MELLING TERRACE, CROFT STREET, WATERSIDE STREET,
	BELLSBANK	RECAWR AVENUE, HILLCREST, MACATERICK DRIVE,, SHALLOCH PLACE
3	U759	LOCH DOON. FROM A713 TO END OF ROAD turn and proceed to
	U760	DALCAIRNEY. FROM B741 TO END OF ROAD

## South Route 5 Priority 3

SECTION	ROUTE No.	DESCRIPTION
		Travel from Depot to New Cumnock
1	NEW CUMNOCK	LOCH VIEW, POLQUHEYS ROAD, MANSEFIELD HEIGHTS, CASTLEHILL, MILLAR ROAD, GLEBE STREET,
	NEW CUMNOCK	NITHSDALE AVENUE, WESTLANDS DRIVE, MASON AVENUE, MOUNTHOPE TERRACE, LOCHBROWN TERRACE,
	NEW CUMNOCK	MILRAY AVENUE, ARDNITH AVENUE, WESTPARK DRIVE, HIGH PARK AVENUE (PART), CAIRNHILL PLACE,
	NEW CUMNOCK	HAMILTON DRIVE, GLENAFTON DRIVE, STELLHEAD AVENUE,
2	U743	NEWFIELD. FROM C36 TO B7046 AT GARLAFF turn left on B7046
	U746	PLUCK ROAD FROM B7046 TO C97 SKARES STATION
	U711	CAIRN BRAE. FROM U743 NEWFIELD TO CAPONACRE CUMNOCK return to Depot
	U747	POLQUAP ROAD. FROM A76 TO C36
3	LOGAN	HOLMHEAD CRES, DIXON AVE, GLENMUIR CR, GLEN AVE, BAILLIE DR,
	CUMNOCK	CAMERON CR, CARSCAILLOCH AVE, LAMONT CR, NETHERTHIRD PLACE, CRAIGENS PLACE, PENDERS WYND
	CUMNOCK	PHILLIPS WYND, CAPONACRE(PART)

Document	Winter Service Plan 2024/25	Revision	3
WINT-1	Page 79 of 182	Date	11/11/24

## South Route (Mauchline Area) Priority 3

SECTION	ROUTE No.	DESCRIPTION							
1	C51	MAUCHLINE PIT.FROM A76 TO FRIENDLESS HEAD U7223							
	U723	FRIENDLESSHEAD. FROM B774 TO B7037							
	C76	FROM B744 TO B7037							
	U19	FROM C76 TO B7037							
2	U734	AUCHMILLAN. FROM HILLHEAD TO B7037							
	U73	DITTON. FROM HILLHEAD U734 TO FRIENDLESSHEAD U723							
	U744	OXENSHAW. FROM AUCHMILLAN TO B743							
	U707	BOGHEAD FROM FRIENDLESSHEAD TO C76							
3	U705	BARNEIGHT &KILLOCH FROM C51 TO BOGHEAD							
	U718	CROFTHEAD ROAD FROM B705 CATRINE TO C137							
	U732	HAUGH&SYKE FROM MAUCHLINE TO A76							
	U714	CAWHILLAN FROM C49 TO C124							
4	U717	CREOCH ROAD FROM C123 TO A70 KILLOCH							
	U734	HILLHEAD. FROM A76 HILLTOP TO EAST HILLHEAD FARM							
	U739	HILLTOP. FROM JUNCTION OF EAST HILLHEAD TO B743 travel on B743 to							
	U734	HILLHEAD. FROM B743 TO B705 CATRINE							
5	C137	FROM B705 JUNCTION TO B743 JUNCTION SORN turn left travel on B743 to							
	C86	FROM B743 TO B7037 turn right to							
	U72	AUCHENCLOIGH FROM B7037 TO TURNING HEAD							

Document	Winter Service Plan 2024/25	Revision	3
WINT-1	Page 80 of 182	Date	11/11/24

## Appendix 8 - Priority 1 Carriageway Gritting Routes South Ayrshire Council

Meadowhead Depot in Coylton operates seven Priority 1 carriageway gritting routes, mainly but not exclusively, confined to the north of the Council area; and includes the major towns of Ayr, Prestwick and Troon.

Grangestone Depot in Girvan operates three Priority 1 carriageway gritting routes, mainly in the south of the Council area; and includes the major towns of Maybole and Girvan.

### Method

Acting on advice received from the Council's weather service provider, Priority 1 routes will receive precautionary treatment prior to the onset of frost / ice.

Included within the Priority 1 routes are all A class and B class roads and strategic C class and unclassified roads.

Roads which meet the Council's criteria of precautionary treatment applied to a minimum of one road servicing council schools, and emergency service depots, plus roads servicing high concentrations of employment, commercial outlets and densely populated residential areas and other roads of strategic importance are also included.

The exception to this arrangement is when the Council's weather service provider advises that there is no risk of hazardous winter road conditions in any of the four climatic domains. In this event altered routes which exclude roads in a particular climatic domain are used.

A small number of roads within residential areas may be partly treated in order to optimise a predetermined routing system.

Document	Winter Service Plan 2024/25	Revision	3
WINT-1	Page 81 of 182	Date	11/11/24

Meadowhead Depot - Priority 1 Carriageway GrittingRoute 1			South Ayrshire Council
Town /Village	Road Number	Description	
-	B742	From Meadowhead Roads Depot to A70 Hillhead Coylton	
Coylton	A70	Hillhead	
		Joppa	
		Ayr Road	
-		From Ayr Road Coylton to A77 Holmston Roundabout	
Ayr		Holmston Road	
		Station Roundabout	
		Station Bridge Road	
		Parkhouse Street	
		Burns Statue Square	
		A79	Station Road
	John Street		
	Allison Street		
	New Road		
	Prestwick Road		
Ayr Road			
Main Street			
The Cross			
Prestwick	Monkton Road (The Cross to Airport Loop Road)		
	Airport Loop Road		
	-	B746	From U98 to Main Street Loans
	Loans	A759	Main Street Loans
-	From Main Street Loans to A78 Auchengate Interchange		
	From A78 Auchengate Interchange to East Ayrshire Council boundary at Old Rome Bridge Gatehead		
Gatehead	Milton View (from Old Rome Bridge to Railway Level Crossing)*		
	Main Road (from Railway Level Crossing to Cochrane Inn)*		
-	B750		From A759 at Boghead to Kilmarnock Road Dundonald
Dundonald		Kilmarnock Road	
	-	Kilnford Drive (From Drybridge Road to A759)	
		Castle Drive	
		Newfield Drive (From Dundonald Primary School to Castle Drive only)	
	B730	From A759 to North Ayrshire Council boundary at south of Railway Bridge Drybridge	

\* Treated on behalf of Ayrshire Road Alliance (East Ayrshire Council area)

Document	Winter Service Plan 2024/25	Revision	3
WINT-1	Page 82 of 182	Date	11/11/24

Meadowhead Depot - Priority 1 Carriageway Gritting Route 1 (continued) South Ayrshire Council		
Town /Village	Road Number	Description
Drybridge	B730	Main Street (from South Ayrshire Council boundary south of Railway Bridge to Shewalton Road Drybridge)*
Dundonald		Drybridge Road
		Main Street
-		From Main Street Dundonald to A77 at Bogend Toll
		From A77 at Bogend Toll to A719 at Rabbit Wood
		From A719 at Fail Toll to Croft Street Tarbolton
Tarbolton		Croft Street
		Cunningham Street
		Montgomerie Street
		From Montgomerie Street Tarbolton to B743 near Carngillan
-	C92	From B730 near Caldrongill to C8 near Plewlands
	C8	From A719 near Adamhill to C64 west of Main Street Craigie
	U80	From B730 near Laigh Langside to C8 north of High Langside
	B743	From B730 at Carngillan to B744 at Weston Brae Annbank
Annbank	B744	Weston Brae
		Brown's Crescent (excluding cul-de-sac between No.2 and No.31)
		Weston Avenue
	-	Goodwin Drive
		Braeside
		Whitehill Crescent
-	B744	From Weston Avenue Annbank to A70 at Belston

\* Treated on behalf of North Ayrshire Council under cross boundary arrangements.

Document	Winter Service Plan 2024/25	Revision	3
WINT-1	Page 83 of 182	Date	11/11/24

Meadowhead Depot - Priority 1 Carriageway Gritting Route 2 South Ayrshire Council		
Town / Village	Road Number	Description
Ayr	B743	Heathfield Road
	-	Low Road
	A719	High Road
		Main Road
		Whitletts Road
		King Street (from Whitletts Road to John Street only)
Prestwick	-	Hunter's Avenue
		Doon Avenue
		Waterloo Road (From Doon Avenue to Ayr Road)
-	B743	From A77 Whitletts Roundabout to C150 St Quivox Road
	C150	St Quivox Road (from B743 to A77)
-	B743	From C150 St Quivox Road to B742 Sandyford Road Mossblown
Mossblown		Sandyford Road
-	B742	From Sandyford Road Mossblown to A77 at Sandyford Toll roundabout
	A719	From B742 east of Sandyford Toll roundabout across East Ayrshire Council boundary to A76 Crossroads roundabout
	B744	From A76 at Crosshands across South Ayrshire Council boundary to Garden Street Tarbolton
Tarbolton		Garden Street
	C17	Westport (from Cunningham Street to Gallowhill Avenue)
	-	Gallowhill Avenue
		Langlands Drive
		Princes Street
		Back Street
		Sandgate Street
		James Street
-	B744	From Montgomerie Street Tarbolton to B743 south of Walston Farm
	B743	From B744 at Carngillan across East Ayrshire Council boundary to Ayr Road Mauchline
Mauchline		Ayr Road*
-		Loudoun Street*
-		From B744 to Mauchline Road Mossblown
Mossblown		Mauchline Road
-	B742	Annbank Road from B743 Mauchline Road to B744 at Weston Smithy

\* Treated on behalf of Ayrshire Roads Alliance (East Ayrshire Council area)

Document	Winter Service Plan 2024/25	Revision	3
WINT-1	Page 84 of 182	Date	11/11/24

Meadowhead Depot - Priority 1 Carriageway Gritting Route 3 South Ayrshire Council		
Town / Village	Road Number	Description
Ayr	C39	Corton Road (from A713 to A77)
-	A719	Dunure Road (from Longhill Avenue Ayr southwards to C12 at Dunure Mains Farm)
Dunure	C12	Castle Road
		Station Road
-	A719	From C12 at Dunure Mains Farm to B7023 at Pennyglen
		From B7023 at Pennyglen to Kirkoswald Road Maidens
Maidens	-	Kirkoswald Road
		Shanter Road (from Kirkoswald Road to Maidens Primary School entrance only)
	A719	Turnberry Road
-	A719	From Turnberry Road Maidens to Maidens Road Turnberry
Turnberry		Maidens Road
-	B741	From A77 at Bridgemill Girvan to Main Street Dailly
Dailly		Main Street
		Linfen Road
-		From Linfen Road Dailly to Main Street Straiton
Straiton		Main Street
-	C1	Newton Stewart Road
		Straiton - Newton Stewart Road (from Straiton to Tarlaw Bridge)
Straiton	B741	Dalmellington Road (from Main Street to No.34 only)
	B7045	Kirkmichael Road
-		From Kirkmichael Road Straiton to Straiton Road Kirkmichael
		Straiton Road
	Kirkmichael	-
Bolestyle Crescent		
Woodside Avenue (from Bolestyle Crescent to Kirkmichael Primary School entrance only)		
-	B7045	From Straiton Road Kirkmichael to A77 at Hogg's Corner
Minishant	-	Mure Place
		Merrick Place (to Minishant Primary School only)
Ayr	A79	Maybole Road (slip lane off A77 only)

Document	Winter Service Plan 2024/25	Revision	3
WINT-1	Page 85 of 182	Date	11/11/24



Meadowhead Depot - Priority 1 Carriageway Gritting Route 4 South Ayrshire Council		
Town / Village	Road Number	Description
Ayr	A713	Dalmellington Road
		Castlehill Road
	-	Ashgrove Street (from Castlehill Road to Dongola Road only)
		Dongola Road (from Ashgrove Street to Holmston Road only)
	A70	Killoch Place
	-	Alloway Street
		High Street
		Boswell Park (from Douglas Street to Carrick Street only)
		Carrick Street
		Fullarton Street (from Carrick Street to Douglas Street only)
		Barns Street
		Wellington Square
		Bath Place
		Pavilion Road
		Esplanade (from Pavilion Road to Bath Place only)
		Dalblair Road
		Kyle Street
		Smith Street
		Mill Street
	A70	Miller Road
	A719	Racecourse Road
		Doonfoot Road
	-	Dunure Road (from Racecourse Road to Longhill Avenue only)
		Longhill Avenue (from Dunure Road to Cairnsmore Drive only)
		Corserine Road (from Cairnsmore Drive to Newark Avenue only)
		Newark Avenue (from Corserine Road to Crossburn only)
		Crossburn
		Browncarrick Drive (from Crossburn to Dunure Road only)
		Scaur O'Doon Road (from Dunure Road to Abbots Way only)
		Abbots Way (from Scaur O'Doon Road to Greenan Way only)
		Greenan Way
		Greenan Road (from Greenan Way to Earls Way only)
		Earls Way
		Longhill Avenue (from Cairnsmore Drive to High Maybole Road)
		The Loaning
		Lauchlanglen Road
		Finlas Avenue
		Carcluie Crescent
		Shielhill
		Braden Drive
		Bathurst Drive
		Merkland Road
		Kerspark (from Merkland Road to Maybole Road only)
		Kincaidston Drive

Document	Winter Service Plan 2024/25	Revision	3
WINT-1	Page 86 of 182	Date	11/11/24

Meadowhead Depot - Priority 1 Carriageway Gritting Route 4 (continued) South Ayrshire Council		
Town / Village	Road Number	Description
Ayr	-	Snowdrop Square
		Hillfoot Road (from Holmston Road to Holmston Drive)
		Holmston Drive (from Hillfoot Road to Caledonia Road)
		Caledonia Road (from Holmston Drive to Armour Drive)
		Armour Drive
		Glencairn Road (from Armour Drive to Holmston Drive)
		Holmston Drive (from Glencairn Road to Caledonia Road)
		Hillfoot Road (from Holmston Drive to Dalmellington Road)
		Belmont Road
	B7024	Monument Road
		Alloway
	-	Doonholm Road (from Murdoch's Lone to Alloway)
		Greenfield Avenue
		Cunning Park Drive
		Gearholm Road
		Racecourse View
		Corsehill Road
		Midton Road (from Carrick Road to Ronaldshaw Park)
		Ronaldshaw Park
		Blackburn Road
		Blackburn Drive (from Blackburn Road to Seafield Road)
		Seafield Road
		Lochlea Drive
		Forehill Road (from Lochlea Drive to Hillfoot Road)
		Shavin Brae (from Hillfoot Road to Crofthead Road)
		Crofthead Road
		Rowan Crescent (from Crofthead Road to Pine Brae)
Coylton	-	Barclaugh Drive
		Woodhead Road (from Barclaugh Drive to Drumcoyle Drive)
		Drumcoyle Drive (from Woodhead Road to No.5)
		The Beeches (from Joppa to Broadwood)
		Broadwood
		Highpark Road
		St Brides Way
		Garvine Road
		Laighpark Road (from Garvine Road to Ayr Road)

Document	Winter Service Plan 2024/25	Revision	3
WINT-1	Page 87 of 182	Date	11/11/24

Meadowhead Depot – Priority 1 Carriageway Gritting Route 5 South Ayrshire Council		
Town / Village	Road Number	Description
-	B746	From A78 Loans off slip road to U98 Corraith Road
	U98	From B746 to U99
	U99	From U98 to Townend Road Symington
Symington	U99	Townend Road
		Main Street
	-	Symington Road North (from Main Street to bus turning circle)
		Bus turning circle at Symington Road North
	C39	Symington Road South (from Main Street to access road to Stockbridge Farm)
	-	Brewlands Road
		Mount Avenue (from Brewlands Road to Lawhill Road only)
		Lawhill Road
		Brewlands Crescent (from Lawhill Road to Brewlands Road only)
-	C39	From Brewlands Road Symington to B730 at Coodham
	B751	From B730 at Coodham to A759 at Old Rome
	C128	Harperland Road (from A759 to B730
	C32	Old Loans Road (from B730 Main Street Dundonald to A759 Main Street Loan)
Troon	-	Central Avenue
		North Drive (from Central Avenue to Buchan Road only)
		Buchan Road (from North Drive to Scott Crescent)
		Burns Road (from Buchan Road to Scott Crescent only)
		Scott Crescent
		Deveron Road
		Staffin Road (from Deveron Road to Garry Place only)
		Garry Place (from Staffin Road to Sark Drive only)
		Sark Drive
		Euchan Place
	B746	Kilmarnock Road
		Beach Road
	-	Burnfoot Avenue
		Kyle Drive
		Walker Avenue
		Muir Drive
		Barassiebank Lane
	B746	North Shore Road
	-	Barassie Street
		Burnside Place
		St Meddans Street (from South Beach to Barassie Street only)
		Church Street
		Bentinck Drive (from St Meddans Street to Yorke Road only)
		Victoria Drive (form Bentinck Drive to Golf Crescent only)
		Golf Crescent
		Yorke Road (from Bentinck Drive to Fullarton Drive only)

Document	Winter Service Plan 2024/25	Revision	3
WINT-1	Page 88 of 182	Date	11/11/24

<b>Meadowhead Depot - Priority 1 Carriageway Gritting Route 5 (Continued) South Ayrshire Council</b>		
<b>Town / Village</b>	<b>Road Number</b>	<b>Description</b>
Troon	-	Harling Drive
-	B746	From A759 Main Street Loans to U98 Corraith Road
Prestwick	-	Monkton Road (from Shawfarm Roundabout to Welsh Road)
		Shawfarm Road (from A79 to Marsmount Road)
		Marsmount Road
		Monument Crescent (from Marsmount Road to Shaw Road)
		Shaw Road (from Monument Crescent to Shawfarm Road)
		Shaw Road (from Shawfarm Road to Sherwood Road)
		Sherwood Road (from Shaw Road to Outdale Avenue)
		Outdale Avenue
		Marchburn Avenue
		Indale Avenue
		Outdale Avenue
		Briarhill Road
		Crofthead Road
		Alexandra Avenue
		Caerlaverock Road
		Sandfield Road
		Bellevue Road (from Sandfield Road to Adamton Road North)
		Biggart Road
		East Road (from Biggart Road to St Quivox Road)
		St Quivox Road
		Adamton Road North
		Adamton Road South (from Biggart Road to Auchencruive Avenue)
		Auchencruive Avenue
		St Andrew's Avenue (from Auchencruive Avenue to Biggart Road)
		East Road (from Biggart Road to Heathfield Road)
		Hunter's Avenue
		Afton Avenue
		Adamton Road South (from Afton Avenue to Auchencruive Avenue)
		Bellevue Road (from Sandfield Road to Main Street)
		Crandleyhill Road
		Nursery Avenue
		Kirkhill Crescent
Ayr	-	Hunters Avenue
		Northfield Avenue
		St Georges Avenue
		McCalls Avenue
		Walker Road

Document	Winter Service Plan 2024/25	Revision	3
WINT-1	Page 89 of 182	Date	11/11/24

Meadowhead Depot - Priority 1 Carriageway Gritting Route 6 South Ayrshire Council		
Town / Village	Road Number	Description
-	B742	From Meadowhead Roads Depot to B744 at Weston Brae
Tarbolton	B744	Burns Street
	C17	Westport
-		From Westport Tarbolton to A719 near Torcross
Ayr	-	Maryfield Road
		Annpit Road (from Maryfield Road to Seaforth Road)
		Viewfield Road (from New Road to Russell Drive)
		Russell Drive
	B747	Craigie Road
	-	Craigie Way
		Hayhill
		Mainholm Road
		Low Road (from High Road to James Campbell Avenue)
		James Campbell Avenue
		Glenmuir Road
		Sloan Street (from Glenmuir Road to Ferguson Street)
		Ferguson Street (from Sloan Street to Galloway Avenue)
		Galloway Avenue
		Waggon Road
		York Street
		North Harbour Street
		Chalmers Road
		Belmont Avenue
		Fenwickland Avenue
		Peggieshill Road
		Annfield Glen Road
		Burnbank Road
-	U116	University Hospital Ayr Access Road
Coylton	-	Carbieston Avenue (from A70 to Lorne Terrace only)
-	B730	From Stair Inn to B743 at Carngillan
Mossblown	-	Acron Avenue
		Drumley Drive
		Station Road (from Annbank Road to Mossgreen Place)
		Mossgreen Place
		Afton Avenue
		Church Drive

Document	Winter Service Plan 2024/25	Revision	3
WINT-1	Page 90 of 182	Date	11/11/24

Meadowhead Depot - Priority 1 Carriageway Gritting Route 7 South Ayrshire Council		
Town / Village	Road Number	Description
-	A713	From B742 to A77 Bankfield roundabout
Ayr	A79	Maybole Road
		St Leonards Road
		Carrick Road
		Beresford Terrace
		Killoch Place (from Beresford Terrace to Miller Road only)
	A70	Miller Road
	A719	Alloway Place
		Wellington Place
		Fort Street
	C146	South Harbour Street (from Fort Street to South Beach Road)
	-	South Beach Road
	A719	South Harbour Street (from Fort Street to New Bridge Street)
		New Bridge Street
		Sandgate
	-	Fullarton Street
		Douglas Street
		Boswell Park (from Douglas Street to Sandgate only)
Main Street (from King Street to Waggon Road only)		
New Road (bus corridor only)		
-	B739	From A719 to Tarbolton Road Monkton
Monkton		Tarbolton Road
		Baird Road
		Kilmarnock Road (from Baird Road to Main Street)
-	C15	Main Street
	C1	From Main Street Monkton to A78 Monktonhead roundabout
Monkton	C1	From A77 Dutch House roundabout to Kilmarnock Road Monkton
	C1	Kilmarnock Road (From 30 mph signs to Baird Road
Troon	B739	Station Road
	B749	Monktonhill Road
	C52	Southwood Road
	B749	Craigend Road
		South Beach
		Ayr Street
	-	Templehill
		Link Road to Harbour Road
	B746	Harbour Road
		Port Ranald Drive
	-	Jubilee Road
	A759	Portland Street
		Dundonald Road
Loans		Troon Road
-	B730	From A77 northbound off slip road to B730 roundabout at Coodham

Document	Winter Service Plan 2024/25	Revision	3
WINT-1	Page 91 of 182	Date	11/11/24

Meadowhead Depot - Priority 1 Carriageway Gritting Route 7 (continued)		
Town / Village	Road Number	Description
-	C39	Symington Road South (from A77 southbound off slip road via overbridge to access road to Stockbridge Farm)
	C74	From A70 to B742
	U77	From B742 to Hole Road Coylton
Coylton	-	Hole Road

Document	Winter Service Plan 2024/25	Revision	3
WINT-1	Page 92 of 182	Date	11/11/24

Grangestone Depot - Priority 1 Carriageway Gritting Route 1 South Ayrshire Council		
Town / Village	Road Number	Description
Girvan	-	Ladywell Avenue
-	A714	From A77 Shalloch Park Roundabout Girvan to U52 Muck Road Pinwherry
	U52	From A714 to Pinwherry Community Centre
	A714	From U52 Muck Road to C72 Gowlands Terrace Barrhill
Barrhill	C72	Gowlands Terrace Barrhill
-		From Gowlands Terrace Barrhill to Barrhill Railway Station
Barrhill	A714	Main Street
-		From Main Street Barrhill to Dumfries and Galloway Council boundary at Wheeb Bridge
		B7027
Girvan	B7035	Coalpots Road (from A77 Shalloch Park roundabout to Piedmont Road)
	-	Piedmont Road (from Coalpots Road to Mote Hill Road)
		Mote Hill Road
		South Park Avenue (from Mote Hill Road to Wreck Road)
		Wreck Road
		Piedmont Road (from Dalrymple Street to Mote Hill Road)
	B7035	Coalpots Road (from Piedmont Road to South Park Avenue)
	-	South Park Avenue (from Coalpots Road to Mote Hill Road)
		Victory Park Road (from South Park Road to Wesley Road)
		Wesley Road
	B7035	Coalpots Road (from South Park Avenue to The Avenue)
	-	The Avenue
	B7022	Church Square
		Hamilton Street
		Montgomerie Street
	B7035	Coalpots Road (from The Avenue to B734 at Brae Toll)
	-	Bridge Street (from A77 to Newton Kennedy Bridge)
Newton Kennedy		
Newton Place		
Golf Course Road (Newton Place to A77)		

Document	Winter Service Plan 2025/25	Revision	3
WINT-1	Page 93 of 182	Date	11/11/24



Grangestone Depot - Priority 1 Carriageway Gritting Route 2 South Ayrshire Council		
Town / Village	Road Number	Description
-	B734	From A714 at Hallowchapel to Main Street Colmonell
Colmonell		Main Street
		Rowantree Street
-	C121	From Rowantree Street Colmonell to C121 at Liggetcheek
	B734	From B734 at Liggetcheek to A77 near Bennane
	C59	From B734 at Knockdollar to Mains Road Ballantrae
Ballantrae	-	Mains Road
		The Vennel
		Foreland (from The Vennel to Shore Road)
-		Shore Road
-	C45	From A77 south of Ballantrae Bridge to Craigneil Road Colmonell
Colmonell	-	Craigneil Road
		Haddows Row
		Kirkhill Crescent
-	C81	From B734 at Jubilee Bridge to A713 north of Daljarrock Bridge
	B734	From A713 at Pinmore Bridge to Stinchar Road Barr
Barr	-	Stinchar Road
		Changue Road (from Glenginnet Road to Barr Primary School)
		Glenginnet Road (from Stinchar Road to No.85)
	U66	From Glenginnet Road Barr to U27 at South Balloch
	B734	From Stinchar Road Barr to B7035 at Old Dailly
	B7035	From B734 at Old Dailly to B741 Linfern Road Dailly
Dailly	C151	Bridge Street
		Woodside
	C30	From B7035 at Lovestone to B734 at Penkill
	B734	From B7035 at Old Dailly to A77 at Bridge Mill Roundabout Girvan

Document	Winter Service Plan 2024/25	Revision	3
WINT-1	Page 94 of 182	Date	11/11/24

Grangestone Depot - Priority 1 Carriageway Gritting Route 3 South Ayrshire Council		
Town / Village	Road Number	Description
-	C29	From B741 at Lochmodie Bridge to Dailly Road Maybole
Maybole	-	Dailly Road
		Ladywell Road
		Society Street
		Abbot Street
		Kirkland Street
		Redbrae
		Cargill Road
		Cargill Avenue
		Kilzenie View
		Elms Drive (from Cargill Avenue to Elms Crescent)
		Elms Crescent
		Ashgrove (excluding cul-de-sac between No.16 and No.18)
		Ashgrove Avenue
		Gardenrose Path (from Cargill Road to Fineview Place)
		Minnoch Crescent
		Kildoon Drive (excluding cul-de-sacs)
		Kincraig Avenue
		Queen's Terrace
		Burns Drive
		Gallowhill Avenue
		McAdam Way (excluding cul-de-sac between No.33 and No.55)
		Whitefaulds Avenue
		Mochrum Avenue (excluding cul-de-sac between No.10 to No.32)
		Whitefaulds Crescent
		Ladyland Road
		Coral Glen
		Welltrees Street
		Carrick Street
		Greenside
		John Knox Street
	B7023	St Cuthbert Road
	B7024	Barns Road
-	B7023	Crosshill Road
Crosshill		From Crosshill Road Maybole to King Street Crosshill
-		King Street
-	C88	Dailly Road
-		From Dailly Road Crosshill to B741 at Rowanston Toll
-		From B741 at Cloyntie Toll to Dalhowan Street Crosshill
Crosshill	-	Dalhowan Street
		Milton Street
		Kirkbride Crescent
-	C31	Carrick Drive
-		Kirkmichael Road (from Carrick Drive to Dalhowan Street)

Document	Winter Service Plan 2024/25	Revision	3
WINT-1	Page 95 of 182	Date	11/11/24

Grangestone Depot - Priority 1 Carriageway Gritting Route 3 (continued)		
Town / Village	Road Number	Description
-	B742	From A77 at Nether Culzean to Dalrymple Bridge
Dalrymple		Main Street (from Dalrymple Bridge to Garden Street)*
-	B7034	Garden Street (from Main Street to South Ayrshire Council boundary at Purclewan Burn)*
-		From East Ayrshire Council boundary at Purclewan Burn to A77 near Carcluie House.
Ayr	C39	Doonholm Road (from A77 to Murdoch's Lone)
		Murdoch's Lone
-	B7024	Alloway (from Murdoch's Lone to High Maybole Road)
Maybole		High Maybole Road (from Alloway Ayr to Alloway Road Maybole)
		Alloway Road
-	B7023	Barns Terrace
-		Culzean Road
-		From Culzean Road Maybole to A719 at Pennyglen

\* Treated on behalf of Ayrshire Roads Alliance (East Ayrshire Council area)

Document	Winter Service Plan 2024/25	Revision	3
WINT-1	Page 96 of 182	Date	11/11/24

## Appendix 9 - Priority 2 Carriageway Gritting Routes South Ayrshire Council

### Meadowhead Depot - Priority 2 Carriageway Gritting Route 1

1

**Travel**, leaving the depot, left **B742**, left **C116** at Bridgend Cottage, **Start Gritting.**      **0.56kms**

2

**Grit**, left **C116** at Bridgend Cottage to junction with Drumcoyle Drive Coylton, **Stop Gritting.**      **1.85kms**

3

**Travel**, via Woodhead Road and Barclaugh Drive Colton right into **A70**, fourth right into **C2** Belston-Woodside - Stair Road, **Start Gritting.**      **2.61kms**

4

**Grit**, **C2** to junction with **B730** south west of Stair, **Stop Gritting.**      **6.50kms**

5

**Travel**, left **B730**, across East Ayrshire Council boundary at Stair Bridge right into **C94** at Yett, **Start Gritting.**      **1.61kms**

6

**Grit**, **C94**, continue gritting across **B743** and to junction with **B730** south of Tarbolton, **Stop Gritting.**      **2.55kms**

7

**Travel**, right into **B730**, left into **C17** Torcross Road and left into **C107** Neilshill Road, **Start Gritting.**      **2.98kms**

Document	Winter Service Plan 2024/25	Revision	3
WINT-1	Page 97 of 182	Date	11/11/24

8

**Grit, C107 Neilshill Road to junction with B743 Mauchline Road Mossblown, Stop Gritting.**  
**2.28kms**

9

**Travel, left B743, left B744, cross-over B730 into C115 Parkmill Road, Start Gritting.3.66kms**

10

**Grit, C115 Parkmill Road to junction with C114 Largie Road, right into C114 Largie Road to junction with B743 east of Failford, Stop Gritting.**  
**4.92kms**

11

**Travel, turn at a safe and convenient location and return on C114 Largie Road to the junction with C115 Parkmill Road, Start Gritting.**  
**1.49kms**

12

**Grit, C114 Largie Road, to B744 at Largietoll Cottage and turn left, Stop Gritting. 1.57kms**

13

**Travel, left into B744 and right into C63 Lochlea Road, Start Gritting.**  
**0.21kms**

14

**Grit, C63 Lochlea Road to junction with A719 east of Fairwells, Stop Gritting.**  
**2.90kms**

15

**Travel, right into A719, left into C53 Carnell House - Gatehead Road at Fiveway House, Start Gritting.**  
**1.83kms**

Document	Winter Service Plan 2024/25	Revision	3
WINT-1	Page 98 of 182	Date	11/11/24

**16**

**Grit, C53, left into C119 Maintree - Howcommon Road and grit to junction with C64 Main Street Craigie, Stop Gritting. 3.71kms**

Document	Winter Service Plan 2024/25	Revision	3
WINT-1	Page 99 of 182	Date	11/11/24

17

**Travel, C64 onto U80 High Langside Road, right into B730 and left C138 Langlands - Underhills Road, Start Gritting. 3.33kms**

18

**Grit, C138 Langlands - Underhills Road to A77 south of Hansel Village, Stop Gritting. 4.79kms**

19

**Travel, turn at a safe and convenient location and return along C138, right into C106 Adamton Mains Road, Start Gritting. 0.54kms**

20

**Grit, C106 Adamton Mains Road to junction with B739, Stop Gritting. 2.28kms**

21

**Travel, right into B739 into Monkton (Baird Road), right into Kilmarnock Road to A77 at Dutch House roundabout. Travel southbound on A77 to A77 Whitellets Roundabout, left into B743 and right into C37 Auchincruive Road, Start Gritting. 10.44kms**

22

**Grit, C37 Auchencruive Road to junction with B744 at Broadhead, Stop Gritting. 2.93kms**

23

**Travel, right B744, left A70 then right into C105 Knocksoul Road, Start Gritting. 1.78kms**

24

**Grit, C105 Knocksoul Road to junction with C74 Macnairston Road and turn right, Stop Gritting. 1.47kms**

Document	Winter Service Plan 2024/25	Revision	3
WINT-1	Page 100 of 182	Date	11/11/24

Document	Winter Service Plan 2024/25	Revision	3
WINT-1	Page 101 of 182	Date	11/11/24



**Travel**, right into **C74** Macnairston Road, left into **C39** Sessionfield Road, **Start Gritting**.  
**0.41kms**

**26**  
**Grit**, **C39** Sessionfield Road to junction with **A713** at Mosshill turn right, **Stop Gritting**.  
**2.67kms**

**27**  
**Travel**, right into **A713**, left into **C39** Corton Road left into **A77**, left into **B7034**, left into **C73** Pleasantfield Road at Carcluie Farm, **Start Gritting**.  
**5.70kms**

**28**  
**Grit**, **C73** Pleasantfield Road to junction with **C39** Corton Road, turn right, **Stop Gritting**.  
**2.49kms**

**29**  
**Travel**, right into **C39** Corton Road, right into **A713**, continue traveling on **A713** across East Ayrshire Council boundary to junction with **C21** Craigs Road at Milreoch turn left, **Start Gritting**.  
**6.29kms**

**30**  
**Grit**, **C21** Craigs Road across South Ayrshire Council boundary to junction with **B742** at Low Colton turn right, **Stop Gritting**.  
**8.35kms**

**31**  
**Travel**, right into **B742**, right into **A70**, left Carbieston Avenue Coylton at Lorne Terrace junction, **Start Gritting**.  
**0.62kms**

**32**  
**Grit** Carbieston Avenue, left into Corsehill Crescent, Craig View, right Carbieston Avenue to Corsehill Crescent junction, **Stop Gritting**.  
**0.51kms**

Document	Winter Service Plan 2024/25	Revision	3
WINT-1	Page 102 of 182	Date	11/11/24

**33**

**Travel**, along Carbieston Avenue, right into **A70**, left into **B742** and return to Depot. **Route Ends.**  
**0.87kms**

**Total route length: 103.029kms.**

**Total length gritted: 55.092kms (53%)**

**Total length free travel: 47.937kms (47%)**

Document	Winter Service Plan 2024/25	Revision	3
WINT-1	Page 103 of 182	Date	11/11/24

## Meadowhead Depot - Priority 2 Carriageway Gritting Route 2

**1**

**Travel**, via **B742** and **A70** to **A77** Holmston roundabout, take second exit into **A70** Holmston Road, left Hillfoot Road, left Masonhill Road, **Start Gritting.** **8.18kms**

**2**

**Grit**, Masonhill Road, right Cedar Road, right into Spruce Park, right into Holly Bank, right into Cedar Road and continue gritting after Spruce Park. Left Briar Grove, left Willow Park, right Larchwood Road, left Roman Road, right **A713** Dalmellington Road, **Stop Gritting.** **2.17kms**

**3**

**Travel**, **A713** Dalmellington Road, left Belmont Road, left Nursery Road, **Start Gritting.** **0.73kms**

**4**

**Grit**, Nursery Road, right Peggieshill Road, **Stop Gritting.** **0.16kms**

**5**

**Travel**, Peggieshill Road, left Annfield Glen Road, left Glendale Crescent, **Start Gritting.** **0.18kms**

**6**

**Grit**, Glendale Crescent, left Annfield Glen Road, **Stop Gritting.** **0.85kms**

**7**

**Travel**, right Burnbank Road, right Fenwickland Avenue, left Belmont Road, across **A79** Maybole Road, into Ewenfield Road, **Start Gritting.** **0.79kms**

Document	Winter Service Plan 2024/25	Revision	3
WINT-1	Page 104 of 182	Date	11/11/24

8

**Grit**, Ewenfield Road, right **B7024** Monument Road, **Stop Gritting**.

**0.44kms**

9

**Travel**, **B7024** Monument Road, right Ewenfield Avenue, **Start Gritting**.

**0.19kms**

10

**Grit**, Ewenfield Avenue, left Ewenfield Road, **Stop Gritting**.

**0.39kms**

11

**Travel**, left **A79** St. Leonards Road, left Bellevale Road, **Start Gritting**.

**0.11kms**

12

**Grit**, Bellevale Road, right **B7024** Monument Road, **Stop Gritting**.

**0.37kms**

13

**Travel**, **B7024** Monument Road, left Corsehill Road, Racecourse View, left **A719** Doonfoot Road, **A719** Dunure Road, left Longhill Avenue, left Lamford Drive, **Start Gritting**. **3.44kms**

14

**Grit**, Lamford Drive, left Glenalla Crescent, Craigstewart Crescent, left Lamford Drive, **Stop Gritting**.

**1.32kms**

15

**Travel**, right Longhill Avenue, right **A719** Dunure Road, right Greenfield Avenue, right MountCharles Crescent, **Start Gritting**.

**1.46kms**

16

Document	Winter Service Plan 2024/25	Revision	3
WINT-1	Page 105 of 182	Date	11/11/24

**Grit**, Mount Charles Crescent (until it rejoins Mount Charles Crescent), right Greenfield Avenue, **Stop Gritting.** **0.76kms**

**17**

**Travel**, Greenfield Avenue, right Baird Road, **Start Gritting.** **0.55kms**

**18**

**Grit**, Baird Road, right Cairn Crescent, right Baird Road, left Cambusdoon Drive, **Stop Gritting.** **0.78kms**

**19**

**Travel**, left Cambusdoon Drive, at Baird Road, **Start Gritting.** **0.26kms**

**20**

**Grit**, Cambusdoon Drive from Baird Road to **B7024** Alloway, left **B7024** Alloway, **Stop Gritting.** **0.35kms**

**21**

**Travel**, **B7024** Alloway, right Doonholm Road, left The Loaning, right Woodend Road, **Start Gritting.** **0.66kms**

**22**

**Grit**, Woodend Road, right The Loaning, **Stop Gritting.** **0.80kms**

**23**

**Travel**, The Loaning, Laughlanglen Road, right Whin Hill Road, **Start Gritting.** **0.85kms**

Document	Winter Service Plan 2024/25	Revision	3
WINT-1	Page 106 of 182	Date	11/11/24

**24**

**Grit, Whin Hill Road, left A79 Maybole Road, Stop Gritting.**

**0.42kms**

**25**

**Travel, A79 Maybole Road, left Laughlanglen Road, right Taybank Drive, Start Gritting.**

**0.48kms**

**26**

**Grit, Taybank Drive, right Sunningdale Avenue, left Longbank Drive, left Longbank Road, right B7024 Monument Road, Stop Gritting.**

**1.12kms**

**27**

**Travel, B7024 Monument Road, right Ewenfield Road, across A79 Maybole Road, Belmont Road, left Belmont Avenue, right Belmont Drive, Start Gritting.**

**0.86kms**

**28**

**Grit, Belmont Drive, onto left Meadow Park Drive, onto Chalmers Avenue, right Belmont Avenue, Stop Gritting.**

**0.89kms**

**29**

**Travel, Belmont Avenue, right Chalmers Road, Lochlea Drive, left St. Phillans Avenue, Start Gritting.**

**0.92kms**

**30**

**Grit, St. Phillans Avenue, right Leslie Crescent, left St. Andrews Street, right A713 Castlehill Road, Stop Gritting.**

**0.93kms**

**31**

**Travel, A713 Castlehill Road onto A79 Station Road, B747 Craigie Road, left Craigie Avenue, Start Gritting.**

**1.02kms**

Document	Winter Service Plan 2024/25	Revision	3
WINT-1	Page 107 of 182	Date	11/11/24

Document	Winter Service Plan 2024/25	Revision	3
WINT-1	Page 108 of 182	Date	11/11/24

**Grit, Craigie Avenue, Albert Terrace, right A79 John Street, Stop Gritting.**

**0.34kms**

**33**

**Travel, A79 John Street, right Elba Street, Start Gritting.**

**0.24kms**

**34**

**Grit, Elba Street, left James Street, left George Street, right Limonds Wynd, left A719 King Street, Stop Gritting.**

**0.43kms**

**35**

**Travel, right A79 Allison Street, A79 New Road, A79 Tams Brig, A79 Prestwick Road, right Seaforth Road, Start Gritting.**

**1.70kms**

**36**

**Grit Seaforth Road, 5<sup>th</sup> right East Park Road, left Hunter's Avenue, Stop Gritting.**

**1.15kms**

**37**

**Travel, Hunter's Avenue, 2<sup>nd</sup> left Cambuslea Road, Start Gritting.**

**0.15kms**

**38**

**Grit Cambuslea Road, right West Sanquhar Road, left, right, Somerset Road, left Back Hawkhill Avenue, left Wilson Street, right Lawson Street, right Lochside Road, right Back Hawkhill Avenue, left Hawkhill Avenue to A719 Whitletts Road, Stop Gritting.**

**2.67kms**

**39**

**Travel, right A719 Whitletts Road, left B747 Craigie Road, left Craigie Way, continue on Craigie Way to Churchill Crescent, Start Gritting.**

**1.88kms**

Document	Winter Service Plan 2024/25	Revision	3
WINT-1	Page 109 of 182	Date	11/11/24



**40**

**Grit, Churchill Crescent, left Hayhill, Stop Gritting.**

**0.38kms**

Document	Winter Service Plan 2024/25	Revision	3
WINT-1	Page 110 of 182	Date	11/11/24

**41**

**Travel**, Hayhill, Mainholm Road, right Westwood Avenue, **Start Gritting.** **1.05kms**

**42**

**Grit**, Westwood Avenue, continue left Thornyflat Road, at **A719** Whitletts Road, **Stop Gritting.**  
**1.35kms**

**43**

**Travel**, Low Road, left **B743** Heathfield Road, right East Road, right Semple Road, **Start Gritting.**  
**2.01kms**

**44**

**Grit**, Semple Road, left at second entrance to Obree Avenue, left Semple Road, right Pentland Drive, left Semple Road, **Stop Gritting.**  
**1.69kms**

**45**

**Travel**, right East Road, left St. Quivox Road, to junction with Adamton Road North, **Start Gritting.**  
**1.92kms**

**46**

**Grit**, St. Quivox Road, left **A79** Main Street, **Stop Gritting.** **0.68kms**

**47**

**Travel**, left **A79** Main Street, right Grangemuir Road, **Start Gritting.** **0.19kms**

**48**

**Grit**, Grangemuir Road, right Midton Road, right Station Road, to junction with **A79** The Cross, left **Stop Gritting.**  
**0.86kms**

Document	Winter Service Plan 2024/25	Revision	3
WINT-1	Page 111 of 182	Date	11/11/24

**49**

**Travel, A79** The Cross, right Alexandra Avenue, right Caerlaverock Road, left Berelands Road onto Sherwood Road to junction with Outdale Avenue, **Start Gritting.** **1.19kms**

**50**

**Grit,** Sherwood Road, left Glenburn Road, left Shawfarm Road, **Stop Gritting.** **0.50kms**

**51**

**Travel,** via Shawfarm Road, **A79, A78, A77 (southbound), A70** and **B742** to Depot. **End of Route.**  
**21.19kms**

**Total route length: 73.96kms.**

**Total length gritted: 21.76kms (29%)**

**Total length free travel: 52.20kms (71%)**

Document	Winter Service Plan 2024/25	Revision	3
WINT-1	Page 112 of 182	Date	11/11/24

## Meadowhead Depot - Priority 2 Carriageway Gritting Route 3

1

**Travel**, leaving the depot, right **B742**, via **A70, A77, A78, A79, B749** Monktonhill Road, **B749** Craigend Road, right Fullarton Drive, **Start Gritting.** **20.22kms**

2

**Grit**, Fullarton Drive, left Eglinton Crescent, onto Fullarton Crescent, onto Wemyss Crescent, left Fullarton Drive, **Stop Gritting.** **2.16kms**

3

**Travel**, Fullarton Drive, left Lochend Road, **Start Gritting.** **0.11kms**

4

**Grit**, Lochend Road, left Bentinck Drive, left Bentinck Crescent, right Bentinck Drive, to Bentinck Crescent, **Stop Gritting.** **1.30kms**

5

**Travel**, Bentinck Drive, left Lochend Road, **Start Gritting.** **0.11kms**

6

**Grit**, Lochend Road, left **B749** South Beach, **Stop Gritting.** **0.18kms**

7

**Travel**, **B749** South Beach, left **B749** Craigend Road, left Bentinck Drive, **Start Gritting.** **0.50kms**

Document	Winter Service Plan 2024/25	Revision	3
WINT-1	Page 113 of 182	Date	11/11/24

**8**

**Grit, Bentinck Drive to junction with Bentinck Crescent, Stop Gritting.**

**0.17kms**

Document	Winter Service Plan 2024/25	Revision	3
WINT-1	Page 114 of 182	Date	11/11/24

9

**Travel**, Bentinck Drive to junction of Lochend Road, **Start Gritting**.

**.26kms**

10

**Grit**, Bentinck Drive to Yorke Road, **Stop Gritting**.

**0.32kms**

11

**Travel**, Bentinck Drive, right St. Meddan's Street, at junction with Barassie Street, **Start Gritting**.

**0.69kms**

12

**Grit**, St. Meddan's Street, Logan Drive, right Donald Avenue, right Brown Avenue, to junction with Logan Drive, **Stop Gritting**.

**1.23kms**

13

**Travel**, left Logan Drive, left Wallacefield Road, **Start Gritting**.

**0.19kms**

14

**Grit** Wallacefield Road, right Donald Crescent, to junction with A759 Dundonald Road, **Stop Gritting**.

**0.53kms**

15

**Travel**, A759 Dundonald Road, right Ottoline Drive, **Start Gritting**.

**0.54kms**

Document	Winter Service Plan 2024/25	Revision	3
WINT-1	Page 115 of 182	Date	11/11/24

**16**

**Grit, Ottoline Drive, right Lady Margaret Drive, left Balcomie Crescent, right Lady Margaret Drive, left Wilson Avenue, right Hunter Crescent, left Wilson Avenue to junction with Lady Margaret Drive, **Stop Gritting.****

**2.89kms**

Document	Winter Service Plan 2024/25	Revision	3
WINT-1	Page 116 of 182	Date	11/11/24

**17**

**Travel, Wilson Avenue to junction with Hunter Crescent, Start Gritting.**

**0.39kms**

**18**

**Grit, Wilson Avenue, left A759 Dundonald Road, Stop Gritting.**

**0.17kms**

**19**

**Travel, A759 Dundonald Road, right Logan Drive, left Brown Avenue, Start Gritting. 1.25kms**

**20**

**Grit, Brown Avenue, right Brodie Avenue, left Hawthorn Place, Stop Gritting.**

**0.42kms**

**21**

**Travel, turn at a safe and convenient location, Brodie Avenue, left Brown Avenue, right Logan Drive, right Gillies Street, Start Gritting**

**0.53kms**

**22**

**Grit, Gillies Street to A759 Dundonald Road turn left, Stop Gritting.**

**0.35kms**

**23**

**Travel, A759 Dundonald Road, left Logan Drive, to junction with Donald Crescent, Start Gritting. 0.62kms**

Document	Winter Service Plan 2024/25	Revision	3
WINT-1	Page 117 of 182	Date	11/11/24



**24**

**Grit**, Logan Drive, left Campbell Drive, right Fraser Avenue, Logan Drive at junction with Campbell Drive,  
**Stop Gritting.** **1.10kms**

**25**

**Travel**, Logan Drive, left Kenmore, **Start Gritting.** **0.14kms**

Document	Winter Service Plan 2024/25	Revision	3
WINT-1	Page 118 of 182	Date	11/11/24

**26**  
**Grit**, left Kenmore, right Marr Drive, left Logan Drive, **Stop Gritting**. **0.54kms**

**27**  
**Travel**, Logan Drive, right **A759** Dundonald Road, Portland Street, right Barassie Street, right **B746** North Shore Road, to junction with Walker Avenue, **Start Gritting**. **1.99kms**

**28**  
**Grit**, right Walker Avenue, right Johnston Drive, left Queens Drive, left Barassiebank Lane, right Burnfoot Road, right **B746** Beach Road, **Stop Gritting**. **1.52kms**

**29**  
**Travel**, **B746** Beach Road to junction with **B746** Kilmarnock Road, **Start Gritting**. **0.40kms**

**30**  
**Grit**, Beach Road, right Hillhouse Road, left Gailes Road, onto Firth Road, right Arran Road, right Beach Road, right Kilkerran Drive, right Firth Road, left Carrick Road, right Gailes Road, right Arran Road, left Beach Road to junction with Hillhouse Road, **Stop Gritting**. **3.41kms**

**31**  
**Travel**, left Hillhouse Road, right Hillhouse Gardens, **Start Gritting**. **0.17kms**

**32**  
**Grit**, Hillhouse Gardens to Railway Station entrance, **Stop Gritting**. **.25kms**

Document	Winter Service Plan 2024/25	Revision	3
WINT-1	Page 119 of 182	Date	11/11/24

**33**

**Travel, turn at a safe and convenient location, return on Hillhouse Gardens, left Hillhouse Road, left Beach Road, left **B746** Kilmarnock Road, left Lang Road, **Start Gritting.** 1.58kms**

**34**

**Grit, Lang Road, right Lochgreen Avenue, left Auchengate, right Lochgreen Avenue, right Lang Road, left Goatfell View, right Adams Gate, first entrance left, to Links Crescent, right Adams Gate, to Links Crescent junction, **Stop Gritting.** 1.17kms**

**35**

**Travel, Adams Gate, left Goatfell View to Lang Road junction, **Start Gritting.** 0.17kms**

**36**

**Grit Goatfell View, right Whins Road, right Lang Road, **Stop Gritting.** 0.23kms**

**37**

**Travel, Lang Road, left Westward Way, **Start Gritting.** 0.07kms**

**38**

**Grit, Westward Way, right Lang Road, **Stop Gritting.** 0.19kms**

**39**

**Travel, Lang Road, right **B746** Kilmarnock Road, left Deveron Road, right Milton Crescent, **Start Gritting.** 0.51kms**

Document	Winter Service Plan 2024/25	Revision	3
WINT-1	Page 120 of 182	Date	11/11/24

**40**

**Grit, Milton Crescent until it rejoins Milton Crescent, Stop Gritting.**

**0.49kms**

Document	Winter Service Plan 2024/25	Revision	3
WINT-1	Page 121 of 182	Date	11/11/24

**41**

**Travel,** Milton Crescent, right Deveron Road, right Calder Avenue, **Start Gritting.** **0.36kms**

**42**

**Grit,** Calder Avenue, right Coyle Park to end, **Stop Gritting.** **0.39kms**

**43**

**Travel, turn at a safe and convenient location,** Coyle Park, left Calder Avenue, right Deveron Road, left Dornal Drive, **Start Gritting.** **0.47kms**

**44**

**Grit,** Dornal Drive, right Spallander Road, left Deveron Road, **Stop Gritting.** **0.45kms**

**45**

**Travel,** left Deveron Road, left Lugar Place, **Start Gritting.** **0.49kms**

**46**

**Grit,** Lugar Place, right Spey Road, left Deveron Road, **Stop Gritting.** **0.45kms**

**47**

**Travel,** Deveron Road, left North Drive to junction with Afton Gardens, **Start Gritting.** **0.32kms**

**48**

**Grit,** North Drive, right Aldersyde Avenue, right Lochlea Avenue, left West Crescent, left Central Avenue, **Stop Gritting.** **0.99kms**

Document	Winter Service Plan 2024/25	Revision	3
WINT-1	Page 122 of 182	Date	11/11/24

**49**

**Travel**, left Central Avenue right Merrick Avenue, **Start Gritting.** **0.16kms**

**50**

**Grit**, Merrick Avenue, left Mossgiel Avenue, left Lochlea Drive, **Stop Gritting.** **0.27kms**

Document	Winter Service Plan 2024/25	Revision	3
WINT-1	Page 123 of 182	Date	11/11/24

**51**

**Travel,** Lochlea Drive, left West Crescent, left Merrick Avenue, **Start Gritting.** **0.40kms**

**52**

**Grit,** Merrick Avenue, right Central Avenue, **Stop Gritting.** **0.12kms**

**53**

**Travel,** Central Avenue, left **A759** Dundonald Road, onto **A759** Troon Road, left Collins Drive Loans, **Start Gritting.** **1.14kms**

**54**

**Grit,** Collins Drive, right Craikslan Place to end, **Stop Gritting.** **0.45kms**

**55**

**Travel, turn at a safe and convenient location,** left Collins Drive, left Kyle Crescent, **Start Gritting.** **0.20kms**

**56**

**Grit,** Kyle Crescent, left Dundonald Road, **Stop Gritting.** **0.25kms**

**57**

**Travel,** **A759** Troon Road, **C32** Old Loans Road, right **U106** Craikslan Road, **Start Gritting.** **0.45kms**

**58**

**Grit,** **U106** Craikslan Road to road end at Clevalance Farm, **Stop Gritting.** **1.77kms**

Document	Winter Service Plan 2024/25	Revision	3
WINT-1	Page 124 of 182	Date	11/11/24

**59**

**Travel, turn at a safe and convenient location,** return along **U106** Craikslan Road, right into C32 Old Loans Road, left **B730** Tarbolton Road Dundonald onto **B730** Drybridge Road, left Kilnford Drive, 4<sup>th</sup> right Kilnford Crescent, **Start Gritting.** **6.27kms**

Document	Winter Service Plan 2024/25	Revision	3
WINT-1	Page 125 of 182	Date	11/11/24



**60**

**Grit**, Kilnford Crescent, right Kilnford Crescent, left Old Auchans View to junction with Kilnford Drive, **Stop Gritting.** **0.81kms**

**61**

**Travel**, right Kilnford Drive, right **B730** Drybridge Road, left **B750** Kilmarnock Road, right Bruce Avenue, **Start Gritting.** **0.56kms**

**62**

**Grit**, Bruce Avenue, left Warly Drive, right Bruce Avenue to junction with Warly Drive, **Stop Gritting.** **0.61kms**

**63**

**Travel**, Bruce Avenue, right **B750** Kilmarnock Road, right Earl Drive, **Start Gritting.** **0.38kms**

**64**

**Grit**, Earl Drive, left Earl Rise, left **B730** Tarbolton Road, **Stop Gritting** **0.68kms**

**65**

**Travel**, **B730** to junction with **C96 Muirhill Road** turn left, **Start Gritting.** **1.94kms**

**66**

**Grit**, **C96 (Muirhill Road)** to junction with **B751**, **Stop Gritting.** **0.90kms**

**67**

**Travel**, **B751** onto **B730** to Tarbolton, left St Andrew's Way, **Start Gritting.** **8.20kms**

Document	Winter Service Plan 2024/25	Revision	3
WINT-1	Page 126 of 182	Date	11/11/24

Document	Winter Service Plan 2024/25	Revision	3
WINT-1	Page 127 of 182	Date	11/11/24

**Grit**, St Andrew's Way, circumnavigate roundabout into Red Rose Way, right Bard Drive, right **B730** Croft Street, **Stop Gritting**. **0.62kms**

**69**

**Travel**, **B730** Croft Street left Springfield Road, **Start Gritting**. **0.04kms**

**70**

**Grit**, Springfield Road to Garden Street, **Stop Gritting**. **0.32kms**

**71**

**Travel**, left Garden Street, right Burns Street, left Sandgate Street to Back Street junction **Start Gritting** **0.35kms**

**72**

**Grit**, Smithfield Crescent, into Fail Avenue, right Mansefield Road, right Back Street, **Stop Gritting**. **0.83kms**

**73**

**Travel**, via Back Street, Princes Street, **B730** Montgomerie Street, **B744**, **B743**, **B744** (through Annbank), **A70** and **B742** to Depot. **Route Ends**. **14.21kms**

**Total route length: 94.908kms.**

**Total length gritted: 28.527kms (30%)**

**Total length free travel: 66.381kms (70%)**

Document	Winter Service Plan 2024/25	Revision	3
WINT-1	Page 128 of 182	Date	11/11/24

## Grangestone Depot - Priority 2 Carriageway Gritting Route 1

**1**

**Travel**, leave depot and turn left into **B741** then travel via the **B741** to **C44** at the former Dailly Station and turn left, **Start Gritting.** **7.12kms**

**2**

**Grit, C44 to A77 at Turnberry, Stop Gritting.** **9.09kms**

**3**

**Travel**, right into **A77**, travel via **A77** northbound to **C28** Blawearie Road south west of Kirkoswald and turn left, **Start Gritting.** **3.96kms**

**4**

**Grit, C28 to A719 north east of Maidens, Stop Gritting.** **1.79kms**

**5**

**Travel**, right into **A719**, travel via **A719** and **B7023** past Pennyglen, left into **C60** opposite Enoch Lodge, **Start Gritting.** **6.39kms**

**6**

**Grit, C60 to B7024 at Cassillis View and turn right, Stop Gritting.** **3.23kms**

**7**

**Travel**, right into **B7024** to **B7023** Barns Road Maybole, left into **B7023** then across **A77** High Street into **B7023** St Cuthberts Road and travel via **B7023** Crosshill Road to **C58** opposite Ballochbroe and turn left, **Start Gritting.** **4.02kms**

Document	Winter Service Plan 2024/25	Revision	3
WINT-1	Page 129 of 182	Date	11/11/24

8

**Grit, C58 to B7045 at Chapelton Old Toll and turn left, Stop Gritting.**

**1.17kms**

9

Document	Winter Service Plan 2024/25	Revision	3
WINT-1	Page 130 of 182	Date	11/11/24

**Travel**, left into **B7045**, then left into **C46** at Harkieston Bridge, **Start Gritting**. **0.95kms**

**10**

**Grit**, **C46** to A77 Cassillis Road Maybole, **Stop Gritting**. **1.79kms**

**11**

**Travel**, left into A77, right into **B7023**, through Maybole, right into **C122** Cargill Road, left Gardenrose Path to Fineview Place junction, **Start Gritting**. **1.65kms**

**12**

**Grit**, **C122** from Fineview Place Maybole, **across C60**, continue gritting **C122** to **B7024** east of Knockdon and turn left, **Stop Gritting**. **7.44kms**

**13**

**Travel**, left into **B7024**, right into **C122**, **Start Gritting**. **0.05kms**

**14**

**Grit**, **C122** to A77 Main Road Minishant and turn right, **Stop Gritting**. **1.25kms**

**15**

**Travel**, right into A77, left into **B7045** at Hogg's Corner, left into **B742**, right into **C110** at Barnford Cottage south of Dalrymple, **Start Gritting**. **5.88kms**

**16**

**Grit**, **C110** to Kirkmichael, left into **C11** Patna Road Kirkmichael and continue gritting **C11** through East Ayrshire Council boundary to Dalvennan Bridge, **Stop Gritting**. **11.13kms**

Document	Winter Service Plan 2024/25	Revision	3
WINT-1	Page 131 of 182	Date	11/11/24

**17**

**Travel, turn at a safe and convenient location and travel back along C11, turn left into C111 west of Stepends Bridge, Start Gritting. 2.63kms**

**18**

**Grit, C111 to B7045 at Black Bridge and turn right, Stop Gritting. 1.53kms**

**19**

**Travel, right into B7045, left into C31 at Aitkenhead Toll, Start Gritting. 1.40kms**

**20**

**Grit, C31 to C88 Dalhowan Street Crosshill, Stop Gritting. 2.83kms**

**21**

**Travel, right into C88 Dalhowan Street then left into B7023 Dailly Road and travel via B7023 and B741 to C29 (branch) at Ruglen and turn right, Start Gritting. 3.56kms**

**22**

**Grit, C29 (branch) to level crossing at Kilkerran, about approximately 10 metres from centre line of railway track, Stop Gritting. 0.56kms**

**23**

**Travel, to about approximately 10 metres after the centre line of railway track, Start Gritting.**

**0.03kms**

Document	Winter Service Plan 2024/25	Revision	3
WINT-1	Page 132 of 182	Date	11/11/24

24

**Grit, C29 (branch) westbound to C29 opposite Mill, Stop Gritting.**

**0.10kms**

25

Document	Winter Service Plan 2024/25	Revision	3
WINT-1	Page 133 of 182	Date	11/11/24



**Travel, turn at a safe and convenient location and return along C29 (branch) to Ruglen and bear right, Start Gritting. 0.57kms**

**26**

**Grit, C29 to B741 and turn right, Stop Gritting.**

**0.09kms**

**27**

**Travel, B741 southbound towards Dailly, continue into B7035 at Roan, travel via B7035 to B734 at Old Dailly and turn right into U39 Hawkhill Road Old Dailly Start Gritting. 10.02kms**

**28**

**Grit, U39 Hawkhill Road, continue gritting past Hawkhill Farm to C101 and turn left, Stop Gritting. 1.02kms**

**29**

**Travel, via C101 and B741 to Depot. End of route.**

**4.66kms**

**Total route length: 95.881kms.**

**Total length gritted: 42.995kms (45%)**

**Total length free travel: 52.886kms (55%)**

Document	Winter Service Plan 2024/25	Revision	3
WINT-1	Page 134 of 182	Date	11/11/24

Grangestone Depot - Priority 2 Carriageway Gritting Route 2	
1	<p><b>Leave Depot and travel, on B741 to Main Street Straiton continue ahead onto C1 Main Street and continue along C1 to Tarlaw Bridge, Start Gritting</b></p> <p><b>27.51kms</b></p>
2	<p><b>Grit, C1 from Tarlaw Bridge southwards to the boundary with Dumfries and Galloway, Stop Gritting.</b></p> <p><b>17.83kms</b></p>
3	<p><b>Travel, C46W in Dumfries and Galloway to A714 at Bargrennan, turn right into A714, continuing on A714 northbound to C72 in Barrhill and turn left into C72 and continue on C72 to Barrhill Railway Station access road, Start Gritting.</b></p> <p><b>26.80kms</b></p>
4	<p><b>Grit, C72 from Barrhill Railway Station access road to turning head 30 metres north of Cattle Grid at Dumfries and Galloway Council Boundary (Drumahastie Burn) Stop Gritting.</b></p> <p><b>6.74kms</b></p>
5	<p><b>Travel, turn at a safe and convenient location and return along C72 to A714 at Barrhill, turn left into A714, continuing on A714 northbound to C13 at Pinmore and turn right, Start Gritting.</b></p> <p><b>20.272kms</b></p>
6	<p><b>Grit, C13 to junction with B734 at Penkill and turn left, Stop Gritting</b></p> <p><b>9.15kms</b></p>

Document	Winter Service Plan 2024/25	Revision	3
WINT-1	Page 135 of 182	Date	11/11/24

7

**Travel**, left into **B734**, right into **C30**, left into **B7035** and right into **C101** at Lovestone, **Start Gritting.**  
**1.26kms**

Document	Winter Service Plan 2024/25	Revision	3
WINT-1	Page 136 of 182	Date	11/11/24

<p><b>8</b></p> <p><b>Grit, <i>C101</i> to junction with <i>B741</i> and turn left, Stop Gritting.</b></p> <p><b>1.64kms</b></p>
<p><b>9</b></p> <p><b>Travel, <i>via B741</i> to Depot, End of route.</b></p> <p><b>3.44kms</b></p>
<p><b>Total route length: 114.64kms.</b></p> <p><b>Total length gritted: 35.36kms (31%)</b></p> <p><b>Total length free travel: 79.28kms (69%)</b></p>

Document	Winter Service Plan 2024/25	Revision	3
WINT-1	Page 137 of 182	Date	11/11/24

# Appendix Carriageway Gritting Routes – South Ayrshire Council

10 Priority 3

## Meadowhead Depot - Priority 3 Carriageway Gritting Route 1

1

Leave depot and travel via the **B742, A70, B742** and **C21** to the **U115** (Barbieston Road). **Start Gritting.**  
**3.94kms**

2

**Grit, left into U115** and grit over bridge at Coyle Water, **Stop Gritting.** **0.51kms**

3

**Travel, turn at a safe and convenient location** and return to the **C21**, continue on **C21** to junction with **U95** (Stabneoch Road), **Start Gritting.** **3.13kms**

4

**Grit, U95** to boundary with East Ayrshire, **Stop Gritting.** **0.33kms**

5

**Travel, turn at a safe and convenient location** and travel left into **C21**, right into **A713**, left into **B7034**, left into **U35**, travel to boundary with East Ayrshire, **Start Gritting.** **6.87kms**

6

**Grit, U35** to **U55** (Netherton Road), right into **U55** to **B742**, **Stop Gritting.** **3.43kms**

Document	Winter Service Plan 2024/25	Revision	3
WINT-1	Page 138 of 182	Date	11/11/24

7

**Travel, turn at a safe and convenient location and return along U55, at junction with U35, Start Gritting.  
2.57kms**

8

Document	Winter Service Plan 2024/25	Revision	3
WINT-1	Page 139 of 182	Date	11/11/24

**Grit, U55 to U32 (Fardenwilliam Road), left into U32, continue gritting to boundary with East Ayrshire, Stop Gritting. 2.84kms**

**9**

**Travel, turn at a safe and convenient location and return along U32 to junction with U55, Start Gritting. 0.17kms**

**10**

**Grit, the U32 to the C110, Stop Gritting. 2.57kms**

**11**

**Travel, left into the C110, left into the U61 (Roaston Road), Start Gritting. 2.40kms**

**12**

**Grit, the U61 to C11, Stop Gritting. 0.69kms**

**13**

**Travel, right into the C11, right into the C110 and travel to the U23 (Crawfordston Road), Start Gritting. 3.17kms**

**14**

**Grit, left into the U23 and continue gritting to the B7045, Stop Gritting. 3.43kms**

Document	Winter Service Plan 2024/25	Revision	3
WINT-1	Page 140 of 182	Date	11/11/24

**15**

Travel, left into the **B7045**, right into the **C46**, left into the **A77**, right into the **B7023**, left into the **A719** to the **U111** (Culzean Castle Road), **Start Gritting**. 9.18kms

**16**

**Grit**, right into **U111** and continue to end of main gate, **Stop Gritting**. 0.39kms

Document	Winter Service Plan 2024/25	Revision	3
WINT-1	Page 141 of 182	Date	11/11/24



**17**

**Travel**, return along *U111*, left into *A719*, left into *U5* (Balchriston Road), **Start Gritting**.

**2.28kms**

**18**

**Grit**, *U5* to end, **Stop Gritting**.

**2.34kms**

**19**

**Travel**, return along *U5*, left into *A719*, left into *U24* (Croy Road), **Start Gritting**. **5.61kms**

**20**

**Grit**, *U24* to end, **Stop Gritting**.

**1.19kms**

**21**

**Travel**, return along *U24*, left into *A719*, right into the *U63* (Sauchrie Road), **Start Gritting**.  
**8.89kms**

**22**

**Grit**, *U63* to the *B7024*, **Stop Gritting**.

**6.17kms**

**23**

**Travel**, right into *B7024*, left into *U47* (Laigh Grange Road), **Start Gritting**. **0.06kms**

**24**

**Grit**, *U47* to the *A77*, **Stop Gritting**.

**1.51kms**

Document	Winter Service Plan 2024/25	Revision	3
WINT-1	Page 142 of 182	Date	11/11/24

25

**Travel**, left into **A77** to the **U14** (Brae Road), **Start Gritting**.

**2.76kms**

26

Document	Winter Service Plan 2024/25	Revision	3
WINT-1	Page 143 of 182	Date	11/11/24

<p><b>Grit, <i>U14</i> to the <i>B7024</i>, Stop Gritting.</b></p> <p><b>1.23kms</b></p>
<p><b>27</b></p> <p><b>Travel, turn at a safe and convenient location and return along the <i>U14</i>, left into the <i>A77</i>, right into the <i>C39</i>, right into the <i>C74</i>, left into the <i>B742</i>, right into the <i>U100</i> (Martnaham Road), Start Gritting.</b></p> <p><b>11.78kms</b></p>
<p><b>28</b></p> <p><b>Grit, <i>U100</i> to the boundary with East Ayrshire, Stop Gritting.</b></p> <p><b>2.25kms</b></p>
<p><b>29</b></p> <p><b>Travel, return along <i>U100</i>, right into <i>U93</i> (Sandhill Road), Start Gritting.</b></p> <p><b>1.53kms</b></p>
<p><b>30</b></p> <p><b>Grit, <i>U93</i> to boundary with East Ayrshire, Stop Gritting.</b></p> <p><b>3.18kms</b></p>
<p><b>31</b></p> <p><b>Travel, return along <i>U93</i>, right into <i>C21</i>, left into <i>B742</i>, right into <i>C74</i>, right into the <i>U82</i> (Laighpark Road), Start Gritting.</b></p> <p><b>4.40kms</b></p>
<p><b>32</b></p> <p><b>Grit, <i>U82</i> to the <i>A70</i>, Stop Gritting.</b></p> <p><b>2.07kms</b></p>

Document	Winter Service Plan 2024/25	Revision	3
WINT-1	Page 144 of 182	Date	11/11/24

**33**

**Travel**, right into the **A70**, left into the **B742**, return to depot.

Route ends.

**2.44kms**

**Total route length: 105.310kms.**

**Total length gritted: 34.145kms (32%)**

**Total length free travel: 71.165kms (68%)**

Document	Winter Service Plan 2024/25	Revision	3
WINT-1	Page 145 of 182	Date	11/11/24

## Meadowhead Depot - Priority 3 Carriageway Gritting Route 2

**1**

**Travel**, leave depot right into **B742**, right **A70**, right **U90** (Potterhill Road), **Start Gritting**.

**3.68kms**

**2**

Grit, **U90** to the **B744**, **Stop Gritting**.

**1.93kms**

**3**

**Travel**, right into **B744**, right into **U91** (Pierhill Road), **Start Gritting**.

**3.76kms**

**4**

Grit, **U91** to the **B730**, **Stop Gritting**.

**2.14kms**

**5**

**Travel**, left into **B730**, right into **B743**, travel across boundary with East Ayrshire. Left into **U92** (Redcraig Road) and at boundary, **Start Gritting**.

**7.85kms**

**6**

Grit, **U92** to the **C35**, **Stop Gritting**.

**3.32kms**

Document	Winter Service Plan 2024/25	Revision	3
WINT-1	Page 146 of 182	Date	11/11/24

**7**

**Travel**, left into the **C35**, right into the **B744**, left into the **U83** (Longhouse Road), **Start Gritting.**  
**1.54kms**

Document	Winter Service Plan 2024/25	Revision	3
WINT-1	Page 147 of 182	Date	11/11/24

8

**Grit, U83 to the A719, Stop Gritting.**

**2.52kms**

9

**Travel, turn at a safe and convenient location, return along the U83 to junction with U84 (Garroch Road), Start Gritting.**

**0.09kms**

10

**Grit, left into U84 to the B744, Stop Gritting.**

**2.78kms**

11

**Travel, right into the B744, right into the U83, right into the A719, left into the C53, left into the U20 (Sidehead Terrace, Fiveways), Start Gritting.**

**3.54kms**

12

**Grit, U20 to end, Stop Gritting.**

**0.70kms**

13

**Travel, turn and return along the U20, right into the C53, right into A719, right into the U70 (Broadyards Road), Start Gritting.**

**3.40kms**

14

**Grit, U70 to the C119, Stop Gritting.**

**1.41kms**

Document	Winter Service Plan 2024/25	Revision	3
WINT-1	Page 148 of 182	Date	11/11/24

**15**

**Travel**, right into the **C119**, left into the **U74** (East Hillhouse Road), **Start Gritting**.

**0.24kms**

Document	Winter Service Plan 2024/25	Revision	3
WINT-1	Page 149 of 182	Date	11/11/24



**16**

**Grit, U74 to the boundary with East Ayrshire, Stop Gritting. 0.71kms**

**17**

**Travel, return along U74, right into the C119, left into the U70, right into the A719, left into the U86 (Millburn Road), Start Gritting. 3.06kms**

**18**

**Grit, U86 to the B744, Stop Gritting. 2.87kms**

**19**

**Travel, turn at a safe and convenient location and return along the U86, left into the U87 (Mossie Road), Start Gritting. 1.08kms**

**20**

**Grit, U87 to the B730, Stop Gritting. 2.25kms**

**21**

**Travel, right into the B730, right into A719, left into the B730, left into the U88 (Midton Road), Start Gritting. 1.78kms**

**22**

**Grit, U88 and U97 (Barnweil Road) taking care to complete the circuit at Barnweil, continue to junction with C138, Stop Gritting. 2.60kms**

Document	Winter Service Plan 2024/25	Revision	3
WINT-1	Page 150 of 182	Date	11/11/24

23

**Travel,** left into the ***CI38*** left into the ***U89*** (Pisgah Road),**Start Gritting.****0.09kms**

Document	Winter Service Plan 2024/25	Revision	3
WINT-1	Page 151 of 182	Date	11/11/24

24

**Grit, U89, take left at Pisgah and continue gritting to junction of the A719, Stop Gritting.**

**2.98kms**

25

**Travel, turn at a safe and convenient location and return along road to Pisgah, Start Gritting.**

**1.44kms**

26

**Grit, U89 to junction with U96 (Wardneuk Road), turn right into the U96 and continue gritting to the C138, Stop Gritting.**

**1.76kms**

27

**Travel, return along U96 to junction with U76 (Foulton Road), Start Gritting.**

**0.81kms**

28

**Grit, U76 to the B739, Stop Gritting.**

**1.29kms**

29

**Travel, left into the B739, right into the A719, right into the A77 at Sandyford Toll, left into the U117 (Shields Road), Start Gritting.**

**3.14kms**

30

**Grit, U117 to Shawhill Farm Road end, Stop Gritting.**

**0.59kms**

Document	Winter Service Plan 2024/25	Revision	3
WINT-1	Page 152 of 182	Date	11/11/24

**31**

Travel, **turn at a safe and convenient location** and return along the **U117**, left into the **A77** (northbound), right into the **A77** (northbound) at Dutch House Roundabout then left into left into the slip road to the **B7038** (Kilmarnock), take left into the **U112** (Spitalhill Road), **Start Gritting**.

**11.04kms**

Document	Winter Service Plan 2024/25	Revision	3
WINT-1	Page 153 of 182	Date	11/11/24

**32**

**Grit, U112 to Spittalhill Farm, Stop Gritting. 0.92kms**

**33**

**Travel, turn at a safe and convenient location and return along U112 and left into B7038, right into the U94 (Stafflar Road { at East Ayrshire }) at boundary, Start Gritting. 0.98kms**

**34**

**Grit, U94 to the B730 at Bogend Toll roundabout, Stop Gritting. 2.54kms**

**35**

**Travel, onto B730 at Bogend Toll roundabout, take 2<sup>nd</sup> exit from roundabout onto B730 left into Whitelees Road, Start Gritting. 0.18kms**

**36**

**Grit, Whitelees Road to end of road at turning head on southside of A77, Stop Gritting. 0.63kms**

**37**

**Travel, turn at a safe and convenient location and return along Whitelees Road, left into the B730, across A77 overbridge, left into B730 at roundabout then right into the B751, right into the U73 (Ditton Road), Start Gritting. 3.25kms**

**38**

**Grit, U73 to end, Stop Gritting. 0.26kms**

Document	Winter Service Plan 2024/25	Revision	3
WINT-1	Page 154 of 182	Date	11/11/24

**39**

**Travel, turn at a safe and convenient location** and return along **U73**, continue into **B751**, left into the **U108** (Rowanhill Road), **Start Gritting.** **0.81kms**

Document	Winter Service Plan 2024/25	Revision	3
WINT-1	Page 155 of 182	Date	11/11/24

40

**Grit, U108**, continue gritting across the **B730** into the **U72**, left into the **U99** (Dundonald /Symington Road) and continue gritting to the junction with the **U98** (Corraith Road), **Stop Gritting**.

4.10kms

41

**Travel, turn at a safe and convenient location** and return along the **U99**, at the junction with **U72**, **Start Gritting**.

1.22kms

42

**Grit, U99** to the **C32**, **Stop Gritting**.

0.91kms

43

**Travel**, right into **C32**, left into **B730**, right into **A759**, left into **C128**, right into the **U109** (Cockhill Road), **Start Gritting**.

3.21kms

44

**Grit, U109** to 'Y' junction, **Stop Gritting**.

0.82kms

45

**Travel, turn at a safe and convenient location** and return along **U109**, left into **C128**, right into **A759**, left at roundabout into **A759**, continue along **A759** towards Loans, left into **U78** (Hillhouse Road), **Start Gritting**.

6.58kms

46

**Grit, U78** to Dovecot Hill, **Stop Gritting**.

0.81kms

Document	Winter Service Plan 2024/25	Revision	3
WINT-1	Page 156 of 182	Date	11/11/24

47

**Travel, turn at a safe and convenient location** and return along the **U78**, left into **A759**, left into **U105** (Collenan Road), **Start Gritting.** **1.24kms**

Document	Winter Service Plan 2024/25	Revision	3
WINT-1	Page 157 of 182	Date	11/11/24



48

**Grit, U105 to the 'Moreland/Water Works Cottages', Stop Gritting.**

**0.61kms**

49

**Travel, turn at a safe and convenient location and return along U105, left into A759, left into C32, right into U110 (Old Craikslan), Start Gritting.**

**1.90kms**

50

**Grit, U110 to end, Stop Gritting.**

**0.06kms**

51

**Travel, turn at a safe and convenient location and return along U110, left into C32, left into B746, right into U75 (Fullarton), Start Gritting.**

**1.35kms**

52

**Grit, U75, right into U114 (Isle of Pin Road) continue gritting to C52 (Monktonhill Road), Stop Gritting.**

**1.58kms**

53

**Travel, left into Monktonhill Road, left into U75, Start Gritting.**

**1.04kms**

54

**Grit, U75 to the junction with U75 (at Fairlees), Stop Gritting.**

**0.81kms**

Document	Winter Service Plan 2024/25	Revision	3
WINT-1	Page 158 of 182	Date	11/11/24

55

**Travel**, right along **U75**, left into **B746**, right into **U98**, right at roundabout onto slip road to **A78**, continue along **A78** to Monktonhill roundabout, exit right into the **A79**. Travel to second roundabout (Prestwick Airport entrance) and circumnavigate, take left into the **U50** (St Andrews Caravan Park Road), **Start Gritting**.  
**6.64kms**

Document	Winter Service Plan 2024/25	Revision	3
WINT-1	Page 159 of 182	Date	11/11/24

56

**Grit, U50 to caravan park entrance, Stop Gritting.**

**0.56kms**

57

**Travel, turn at a safe and convenient location and return along U50, left into A79 to Monktonhillroundabout and exit into U81 (Kerrix Road), Start Gritting.**

**2.32kms**

58

**Grit, U81 to Main Street, Symington, Stop Gritting.**

**4.61kms**

59

**Travel, right into Main Street, left into Symington Road South, left into A77 northbound, continue on A77 then left into B730 at Bogend, then take 1<sup>st</sup> exit at roundabout into B730 travel across A77 overbridge then take 1<sup>st</sup> exit at roundabout into B730 then left into A77 (southbound), left into the U79 (Helenton Mains Road), Start Gritting.**

**11.83kms**

60

**Grit, U79 to end, Stop Gritting.**

**1.38kms**

61

**Travel, turn at a safe and convenient location and return along U79, left into A77 (southbound), continue on A77 through Dutch House and Whitletts roundabouts. Continue on A77, left U85 (Mainholm Road), Start Gritting.**

**4.71kms**

62

**Grit, U85 to end, Stop Gritting.**

**2.60kms**

Document	Winter Service Plan 2024/25	Revision	3
WINT-1	Page 160 of 182	Date	11/11/24

63

**Travel, turn at a safe and convenient location** and return along **U85**, left into **A77**, left into **A70** and return to depot. Route Ends. **10.71kms**

**Total route length: 158.737kms.**

**Total length gritted: 52.838kms (33%)**

Document	Winter Service Plan 2024/25	Revision	3
WINT-1	Page 161 of 182	Date	11/11/24

Total length free

travel: 105.899kms (67%)

Grangestone Depot - Priority 3 Carriageway Gritting Route 1	
1	Travel, leave depot and travel left into <b>B741</b> to the <b>U25</b> (Delamford), right into the <b>U25</b> , <b>Start Gritting.</b> <b>10.47kms</b>
2	Grit, <b>U25</b> to the junction with the <b>U66</b> (Stinchar Road), <b>Stop Gritting.</b> <b>8.29kms</b>
3	Travel, right into <b>U66</b> , left into <b>B734</b> , right into <b>U11</b> , <b>Start Gritting.</b> <b>6.09kms</b>
4	Grit, <b>U11</b> to before bridge over the River Stinchar. <b>DO NOT CROSS THE BRIDGE</b> , <b>Stop Gritting.</b> <b>0.50kms</b>
5	Travel, return along <b>U11</b> , left into the <b>B734</b> , right into <b>U66</b> , continue to the <b>U57</b> (Nick of the Balloch Road), <b>Start Gritting.</b> <b>10.74kms</b>
6	Grit, right into <b>U57</b> and continue gritting to the <b>C1</b> , <b>Stop Gritting.</b> <b>6.21kms</b>
7	Travel, left into <b>C1</b> and continue to <b>U8</b> (Ballochbeatties Road), right into the <b>U8</b> , <b>Start Gritting.</b> <b>7.58kms</b>
8	Grit, <b>U8</b> to end, <b>Stop Gritting.</b> <b>2.53kms</b>
9	Travel, turn at a safe and convenient location and return along the <b>U8</b> , right into the <b>C1</b> , right into the <b>U42</b> (Knockdon Road), <b>Start Gritting.</b> <b>8.77kms</b>
10	Grit, <b>U42</b> to Knockdon Bridge, <b>Stop Gritting.</b> <b>2.54kms</b>

Document	Winter Service Plan 2024/25	Revision	3
WINT-1	Page 162 of 182	Date	11/11/24

<b>11</b>	<b>Travel, turn at a safe and convenient location and return along the <i>U42</i>, right into <i>C1</i>, left into the <i>U4</i> (Balbeg Road), Start Gritting.</b>	<b>5.19kms</b>
<b>12</b>	<b>Grit, <i>U4</i> to Palmullan Bridge, Stop Gritting.</b>	<b>1.40kms</b>
<b>13</b>		

Document	Winter Service Plan 2024/25	Revision	3
WINT-1	Page 163 of 182	Date	11/11/24

<b>Travel, turn at a safe and convenient location and return along U4, left into C1, right into B741, left into U104 (Holehouse Road), Start Gritting.</b>		<b>4.49kms</b>
<b>14</b>		
<b>Grit, U104 to Glenhead Farm, Stop Gritting.</b>		<b>0.55kms</b>
<b>15</b>		
<b>Travel, turn at a safe and convenient location and return along U104, right into B741, left into U31 (Dyke Road), Start Gritting.</b>		<b>1.72kms</b>
<b>16</b>		
<b>Grit, U31, right into U68, at junction with B741, Stop Gritting.</b>		<b>3.21kms</b>
<b>17</b>		
<b>Travel, turn at a safe and convenient location and return along U68, right into U43 (Knockgardner Road), Start Gritting.</b>		<b>1.31kms</b>
<b>18</b>		
<b>Grit, U43, left into U27 (Deil's Elbow Road), continue gritting to junction with U66, Stop Gritting.</b>		<b>13.38kms</b>
<b>19</b>		
<b>Travel, turn at a safe and convenient location and return along U27 to junction with U12 (Blair Road), Start Gritting.</b>		<b>9.48kms</b>
<b>20</b>		
<b>Grit, U12 to Blair Farm, Stop Gritting.</b>		<b>1.05kms</b>
<b>21</b>		
<b>Travel, turn at a safe and convenient location and return along U12, left into U27, to the junction with U43, Start Gritting.</b>		<b>2.19kms</b>
<b>22</b>		
<b>Grit, left into the U27 to the junction with B741 at Cloyntie Toll, Stop Gritting.</b>		<b>2.14kms</b>
<b>23</b>		
<b>Travel, turn at a safe and convenient location and return along U27 to U45 (Ladyburn Road), Start Gritting.</b>		<b>1.26kms</b>
<b>24</b>		
<b>Grit, right into the U45, right into the U16 (Burnton Road) and continue gritting to the junction with B741, Stop Gritting.</b>		<b>3.26kms</b>

Document	Winter Service Plan 2024/25	Revision	3
WINT-1	Page 164 of 182	Date	11/11/24

25	Travel, turn at a safe and convenient location and return along the <i>U16</i> to junction with the <i>U45</i> , Start Gritting.	1.49kms
26	Grit, right into <i>U45</i> to the junction with the <i>B741</i> , Stop Gritting.	0.89kms
27		

Document	Winter Service Plan 2024/25	Revision	3
WINT-1	Page 165 of 182	Date	11/11/24



<b>Travel, left into <i>B741</i>, left into the <i>U60</i> (Poundland Road), <b>Start Gritting.</b></b>		<b>2.59kms</b>
<b>28</b>		
<b>Grit, <i>U60</i> to Poundland Farm, <b>Stop Gritting.</b></b>		<b>0.80kms</b>
<b>29</b>		
<b>Travel, turn at a safe and convenient location and return along the <i>U60</i>, left into the <i>B741</i> and return to Depot. Route ends.</b>		<b>11.81kms</b>
<b>Total route length: 131.908kms.</b>		
<b>Total length gritted: 46.732kms (35%)</b>		
<b>Total length free travel: 85.176kms (65%)</b>		

Document	Winter Service Plan 2024/25	Revision	3
WINT-1	Page 166 of 182	Date	11/11/24

## Grangestone Depot - Priority 3 Carriageway Gritting Route 2

**1**  
**Travel**, leave depot and continue, via **B741** and **A77** to the junction of the **U64** (Shalloch Mill Road), **Start Gritting**.  
**6.82kms**

**2**  
**Grit**, the **U64** to the junction with **A714**, **Stop Gritting**.  
**1.03kms**

**3**  
**Travel**, right into **A714** to **U48** (Lendal Road), **Start Gritting**.  
**5.33kms**

**4**  
**Grit**, **U48** to junction with the **A77**, **Stop Gritting**.  
**8.87kms**

**5**  
**Travel**, left into **A77**, left into **U17** (Carlton Road), **Start Gritting**.  
**0.10kms**

**6**  
**Grit**, **U17** to the junction with the **B734**, **Stop Gritting**.  
**4.85kms**

**7**  
**Travel**, left into **B734**, right into **A714**, left into the **U52** (Muck Road), **Start Gritting**.  
**4.87kms**

**8**  
**Grit**, **U52** to junction with access road to Muck Farm, **Stop Gritting**  
**5.67kms**

**9**  
**Travel**, turn at a safe and convenient location and return along **U52**, left into the **A714**, right into the **U103** (Drumskeoch Road), **Start Gritting**.  
**7.49kms**

**10**  
**Grit**, **U103** to end, **Stop Gritting**.  
**2.11kms**

**11**  
**Travel**, turn at a safe and convenient location and return along **U103**, right into the **A714**, continue through Barrhill, continue on **A714** to the junction with **U102** (Black Clauchrie Road), **Start Gritting**.  
**8.11kms**

Document	Winter Service Plan 2024/25	Revision	3
WINT-1	Page 167 of 182	Date	11/11/24

12	Grit, <i>U102</i> to end, Stop Gritting.	4.43kms
----	--	---------

13	Travel, turn at a safe and convenient location and return along <i>U102</i> , right into the <i>A714</i> , left into the <i>B7027</i> , left into the <i>U28</i> (Dornal Road), Start Gritting.	13.78kms
----	---	----------

Document	Winter Service Plan 2024/25	Revision	3
WINT-1	Page 168 of 182	Date	11/11/24

**14**  
**Grit, U28 to end, Stop Gritting. 4.20kms**

**15**  
**Travel, turn at a safe and convenient location and return along U28, right into B7027, left into A714, continue through Pinwherry, left into the B734, left into C45 in Colmonell, left into U26 (Dalreoch Road), Start Gritting. 25.61kms**

**16**  
**Grit, U26 to Dalreoch Mains Farm, Stop Gritting. 2.01kms**

**17**  
**Travel, turn at a safe and convenient location and return along the U26, left into U9 (Bardrochat Road), Start Gritting. 1.83kms**

**18**  
**Grit, U9 at cattle grid near access leading to East Reuchal Farm, Stop Gritting. 2.15kms**

**19**  
**Travel, turn at a safe and convenient location and return along U9, left into U26, left into C45, right into U59 (Polcardoch Road), Start Gritting. 6.32kms**

**20**  
**Grit, U59 to Kirkholm Farm, Stop Gritting. 0.41kms**

**21**  
**Travel, turn at a safe and convenient location and return along U59 right into C45, left into U51 (Mains of Tig Road), Start Gritting. 0.74kms**

**22**  
**Grit, U51 to Mains of Tig Farm, Stop Gritting. 3.31kms**

**23**  
**Travel, turn at a safe and convenient location and return along U51, left into C45, left into U22(Crailoch Road), Start Gritting. 4.47kms**

**24**  
**Grit, U22 to Crailoch Farm, Stop Gritting. 1.39kms**

**25**  
**Travel, turn at a safe and convenient location and return along U22, right into U6 (Balkissock Road), Start Gritting. 1.14kms**

Document	Winter Service Plan 2024/25	Revision	3
WINT-1	Page 169 of 182	Date	11/11/24

<b>26</b> <b>Grit, U6 to Balkissock, Stop Gritting.</b>	<b>1.67kms</b>
--	----------------

Document	Winter Service Plan 2024/25	Revision	3
WINT-1	Page 170 of 182	Date	11/11/24

	left into <b>U1</b> (Auchairnie Road), <b>Start Gritting.</b>	<b>5.93kms</b>
<b>28</b>	<b>Grit, U1 to junction with Kilwhannel farm access road, Stop Gritting.</b>	<b>2.10kms</b>
<b>29</b>	<b>Travel, turn at a safe and convenient location and return along U1, left into A77, right into U36 (Glendrishaig Road), Start Gritting.</b>	<b>6.33kms</b>
<b>30</b>	<b>Grit, U36 to High Ballochdowan, Stop Gritting.</b>	<b>2.20kms</b>
<b>31</b>	<b>Travel, turn at a safe and convenient location and return along the U36, to junction with U10 (Big Park Road), Start Gritting.</b>	<b>1.67kms</b>
<b>32</b>	<b>Grit, U10, right into U7 (Ballantrae Mill Road), to junction with A77, Stop Gritting.</b>	<b>4.78kms</b>
<b>33</b>	<b>Travel, turn at a safe and convenient location and return along U7 to junction with the U10, Start Gritting.</b>	<b>0.29kms</b>
<b>34</b>	<b>Grit, right into U10, left into U29 (Downan Road), continue gritting at entrance to Dowanhill, Stop Gritting.</b>	<b>2.19kms</b>
<b>35</b>	<b>Travel, turn at a safe and convenient location and return along U29, to junction with U10, Start Gritting.</b>	<b>1.86kms</b>
<b>36</b>	<b>Grit, left into U10 to junction with A77, Stop Gritting.</b>	<b>0.47kms</b>
<b>37</b>	<b>Travel, left into A77, left into U113 (Bennane Road), Start Gritting.</b>	<b>4.03kms</b>
<b>38</b>	<b>Grit, U113 to Bennane House, Stop Gritting.</b>	<b>0.29kms</b>

Document	Winter Service Plan 2024/25	Revision	3
WINT-1	Page 171 of 182	Date	11/11/24

**39**

**Travel, turn at a safe and convenient location** and return along *U113*, left into *A77* and return to Depot via *A77* and *B741*. Route ends. **20.88kms**

**Total route length: 175.768kms.**

**Total length gritted: 51.175kms (30%)**

**Total length free travel: 124.593kms (70%)**

Document	Winter Service Plan 2024/25	Revision	3
WINT-1	Page 172 of 182	Date	11/11/24

## Grangestone Depot - Priority 3 Carriageway Gritting Route 3

**1**

**Travel**, leave depot and turn left into **B741** and left into **U46** (Ladywell Road), **Start Gritting**.  
**1.19kms**

**2**

**Grit**, **U46** to Works Access on right side of the road, **Stop Gritting**. **0.28kms**

**3**

**Travel**, **turn at a safe and convenient location** and return along **U46**, left into **B741**, right onto **A77**, right into **U30** (Dunnymuck Road), **Start Gritting**. **5.73kms**

**4**

**Grit**, the **U30** to Dunnymuck Farm, **Stop Gritting**. **0.13kms**

**5**

**Travel**, **turn at a safe and convenient location** and return along **U30**, right into the **A77**, right into the **U49** (Littleton Glen Road), **Start Gritting**. **1.17kms**

**6**

**Grit**, the **U49**, right into the **U54** (McGownston Road), continue gritting to the **C44**, **Stop Gritting**.  
**4.17kms**

Document	Winter Service Plan 2024/25	Revision	3
WINT-1	Page 173 of 182	Date	11/11/24



7

**Travel**, left into the **C44**, right into the **U19** (Chapelton Road), **Start Gritting**. **0.65kms**

Document	Winter Service Plan 2024/25	Revision	3
WINT-1	Page 174 of 182	Date	11/11/24

8

**Grit, U19, left into the U44 (Knoxhill Road), continue gritting to the A77, Stop Gritting.**  
**4.16kms**

9

**Travel, turn at a safe and convenient location and return along the U44, right into the U40 (High Park Road), Start Gritting.**  
**0.10kms**

10

**Grit, U40 across the C44 to the junction with the U49, turn left, Stop Gritting.** **3.90kms**

11

**Travel, along the U54, across C44, into the U53 (Mullocks Road), Start Gritting.**  
**2.98kms**

12

**Grit, U53 to junction with the U62 (Roughneuk Road), right, Stop Gritting.** **3.96kms**

13

**Travel, U62 to the junction with the C29. Turn at a safe and convenient location return into U62, Start Gritting.**  
**1.88kms**

14

**Grit, U62 to the junction with U44, Stop Gritting.** **4.52kms**

Document	Winter Service Plan 2024/25	Revision	3
WINT-1	Page 175 of 182	Date	11/11/24

**15**

**Travel**, right into **U44**, right into the **U38** (Hallowshean Road), **Start Gritting.** **0.27kms**

Document	Winter Service Plan 2024/25	Revision	3
WINT-1	Page 176 of 182	Date	11/11/24

**16**

**Grit, U38 to junction with the A77, right, Stop Gritting. 1.99kms**

**17**

**Travel, A77, right into the U69 (Wellholm Road), Start Gritting. 2.80kms**

**18**

**Grit, U69 to the junction with U38, right into U38, Stop Gritting. 2.81kms**

**19**

**Travel, via the U38, right into A77, right into the C29 at Maybole, right into the U2 (Auchencross Road), Start Gritting. 7.01kms**

**20**

**Grit, U2, right into U15 (Burncrooks Road), continue gritting U15 to end, Stop Gritting. 4.46kms**

**21**

**Travel, turn at a safe and convenient location and return along the U15 to junction with the U2, continue on U15, Start Grit 2.40kms**

**22**

**Grit, U15 to the junction with the C29, right, Stop Gritting. 0.39kms**

**23**

**Travel, turn right into the C29, left into the U3 (Bairdsmill Road), Start Gritting. 0.50kms**

Document	Winter Service Plan 2024/25	Revision	3
WINT-1	Page 177 of 182	Date	11/11/24

24

**Grit, U3 to the junction with the B7023, right, Stop Gritting.**

**1.82kms**

Document	Winter Service Plan 2024/25	Revision	3
WINT-1	Page 178 of 182	Date	11/11/24

**25**

Travel, via the **B7023**, **C88** and **B741** then left into the **U34** (at Longhill on Garphar Road), **Start Gritting**.  
3.48kms

**26**

**Grit**, **U34** and continue gritting to junction with the **U67** (Tranew Road), **Stop Gritting**.  
1.29kms

**27**

**Travel**, right into the **U67** to the junction with the **B741**. **Turn at a safe and convenient location** and return along the **U67**, **Start Gritting**.  
0.61kms

**28**

**Grit**, **U67** to the junction with the **C31**, **Stop Gritting**.  
3.48kms

**29**

**Travel**, left into the **C31**, left into the **U58** (Parkfairn Road), **Start Gritting**.  
1.15kms

**30**

**Grit**, **U58** to the junction with the **B741**, right, **Stop Gritting**.  
1.60kms

**31**

**Travel**, **B741**, right into the **C44**, left into the **U21** (Craighead Road at Drummuck), **Start Gritting**.  
13.85kms

Document	Winter Service Plan 2024/25	Revision	3
WINT-1	Page 179 of 182	Date	11/11/24

32

Grit, *U21* to the junction with the *B741*, Stop Gritting.

3.31kms

33

Travel, right into the *B741* and return to Depot. Route ends.

4.30kms

Total route length:

92.794kms.

Total length gritted: 42.732kms (46%) Total length

free travel: 50.062kms (54%)

Document	Winter Service Plan 2024/25	Revision	3
WINT-1	Page 180 of 182	Date	11/11/24





