



Ayrshire Roads Alliance

Winter Service Plan

For East Ayrshire and South Ayrshire Councils

2021/22



East Ayrshire Council
Comhairle Siorrachd Àir an Ear

south
AYRSHIRE
COUNCIL

INTRODUCTION

The Ayrshire Roads Alliance within the Department of Safer Communities is responsible for providing the winter service for East Ayrshire and South Ayrshire Councils. The remit includes:

- Establishing standards
- Establishing treatment priorities
- Day to day direction of operations
- Monitoring performance
- Liaison with adjoining Councils and Emergency Services

The Winter Service Plan was revised during the summer of 2015 to introduce the concepts and to follow the format provided in the code of practice 'Well Maintained Highways', which was updated in September 2013.

In addition, the Ayrshire Roads Alliance will follow advice from the SCOTS Winter Service Subgroup on the use and application of Appendix H: Winter Service issues.

There is additional and more detailed information available (within the Ayrshire Roads Alliance Quality Management System and the Severe Weather Operations Plan for resources involved with the management and implementation of this Winter Service Plan.)

Document	Winter Service Plan 2020/21	Revision	1
WINT-1	Page 2 of 123	Date	02/11/2021

CONTENTS

INTRODUCTION	2
CONTENTS	3
1.0 Statement of Policies and Responsibilities.....	5
1.1 Statutory Obligations and Policy	5
1.2 Responsibilities.....	5
1.3 Decision Making Process.....	7
1.4 Arrangements with Adjacent Authorities	8
1.5 Resilience Levels.....	8
1.6 Potential Resilience Measures relating to COVID19	8
2.0 Quality.....	9
2.1 Quality Management Regime.....	9
2.2 Document Control Procedures.....	9
2.3 Distribution of Documents.....	9
2.4 Information Recording and Analysis.....	9
2.5 Arrangements for Performance Monitoring and Updating	10
3.0 Route Planning for Carriageway and Footway	10
3.1 General.....	10
3.2 Carriageways Routes for precautionary treatment	11
3.3 Carriageway Routes for post treatment.....	11
3.4 Carriageway Routes for snow clearance.....	12
3.5 Footway Routes for Precautionary Treatment.....	12
3.6 Footway Routes for Post Treatment.....	12
3.7 Routes for cycle route treatment	12
3.8 Response and Treatment Times for Carriageway Treatments	12
3.9 Response and Treatment Times for Footway and Cycle Route Treatments.....	13
3.10 Allocation of plant, vehicles, equipment, and materials to routes	13
3.11 Location and maintenance of grit bins.....	13
3.12 Community self-assistance	13
4.0 Weather Prediction and Information.....	14
4.1 Forecasting, Patrols, and other Decision Support Information.....	14
4.2 Information to be provided by Forecaster.....	14
4.3 Timing and distribution of information	Error! Bookmark not defined.
4.4 Maintenance of ice detection equipment.....	15
5.0 Organisational Arrangements and Personnel.....	15
5.1 Organisation chart and employee responsibilities	15
5.2 Employee duty schedules, rotas, and standby arrangements	16
5.3 Additional Resources.....	16
5.4 Training	16
5.5 Health and Safety Procedures	16
6.0 Plant, Vehicles and Equipment	17
6.1 Plant, Vehicles and Equipment	17
6.2 Location of Plant, Vehicles and Other Equipment	17
6.3 Garaging, servicing and maintenance arrangements	17
6.4 Contact and hire arrangements for Contract plant.....	17
6.5 Calibration Procedures	17
6.6 Fuel stocks and locations.....	17

Document	Winter Service Plan 2020/21	Revision	1
WINT-1	Page 3 of 123	Date	02/11/2021

7.0	Salt and De-Icing Materials	18
7.1	Location and capacity of stocks for salt and other materials	18
7.2	Testing Arrangements.....	18
7.3	Loading Arrangements.....	18
7.4	Pattern of Spreading.....	18
7.5	Salt Spread Rates.....	18
7.6	Salt Purchasing Arrangements and Supplies	19
8.0	Operational Communications.....	19
8.1	Technical systems information.....	19
8.2	Reporting arrangements and protocols	19
9.0	Information and Publicity	20
9.1	Local Press and broadcast information	20
9.2	Publicity	20
9.3	Other Key Local Contact Information	20
9.4	Records.....	21
9.5	Responsibilities and Guidance for Providing Information	21
	Appendix 1 Winter Service Organisation Chart.....	22
	Appendix 2 Grit Bin Policy & Requests	23
	Appendix 3 Request to Site a Grit Bin.....	24
	Appendix 4 Priority 1 Carriageway Gritting Routes - East Ayrshire Council.....	26
	Appendix 5 Carriageway North/South Snow Routes - East Ayrshire Council.....	46
	Appendix 6 Priority 2 Carriageway Gritting Routes - East Ayrshire Council	48
	Appendix 7 Priority 3 Carriageway Gritting Routes - East Ayrshire Council.....	50
	Appendix 8 Priority 1 Carriageway Gritting Routes - South Ayrshire Council	56
	Appendix 9 Priority 2 Carriageway Gritting Routes - South Ayrshire Council.....	72
	Appendix 10 Priority 3 Carriageway Gritting Routes - South Ayrshire Council.....	98

Document	Winter Service Plan 2020/21	Revision	1
WINT-1	Page 4 of 123	Date	02/11/2021

1.0 Statement of Policies and Responsibilities

1.1 Statutory Obligations and Policy

- 1.1.1 East Ayrshire and South Ayrshire Council have a statutory obligation under Section 34 of the Roads (Scotland) Act 1984 to prevent snow and ice endangering the safe passage of pedestrian and vehicles over public roads in terms of the above legislation a 'road' includes carriageways, footways, and footpaths areas.
- 1.1.2 South and East Ayrshire Council's aim is to provide an effective and efficient Winter Service in accordance with 'Well Maintained Highways' and within the resources available to: -
- Allow the safe passage of vehicles and pedestrians
 - Minimise delays due to winter weather
 - Ensure operations are undertaken safely
- 1.1.3 The aim of the Winter Service Plan is to set out how the Winter Service will be provided within each Council roads network.

1.2 Responsibilities

- 1.2.1 The enabling and service delivery of the Winter Service is the responsibility of the Head of Service - Ayrshire Roads Alliance.
- 1.2.2 The Ayrshire Roads Alliance is responsible for the work involved in providing the Winter Service. These responsibilities include the following:
- Developing the Winter Service to cope with an 'average winter' but having the capability to be extended or adapted when winters are more severe or of a longer duration than average.
 - Production and distribution of the Winter Service Plan.
 - Review and update of the Severe Weather Operations Plan
 - Providing accurate and timely information to the East Ayrshire Risk Management Centre and South Ayrshire Monitoring Station.
 - Carrying out an annual review of the service and updating the Winter Service Plan where necessary.
 - Liaising with adjacent roads authorities in the preparation of the Winter Service Plan to ensure continuity of service across boundaries.
 - Providing a list of roads designated for priority treatment.
 - Providing a list of footways and pedestrian areas designated for priority treatment.
 - Providing a list of roads designated as strategic routes for snow clearing.
 - Providing decision-making charts, advice, and guidance for those involved in the Winter Service.
 - Liaising with the Winter Supervisors to provide help and advice to ensure the service is delivered in the most effective, efficient, and economical way, including establishing operational priorities during extreme weather conditions.
 - Arranging for weather forecasts, ice prediction reports and road and weather monitoring information to be available throughout the winter period.

Document	Winter Service Plan 2020/21	Revision	1
WINT-1	Page 5 of 123	Date	02/11/2021

- Arranging for appropriate specialist vehicles and equipment to be available throughout the winter period.
- Arranging for supplies of salt to be available at the start of the overall winter period.
- Monitoring the salt usage and ensuring supplies are replenished to maintain an appropriate level of salt in the stockpile.
- Establish contact numbers for access to emergency services control rooms, public transport operators, local media, and the motoring organisations.
- Passing of factual information on road conditions to each Council's Communications Team as and when required.
- Monitoring all aspects of the Winter Service and providing information on performance indicators.
- Maintaining full and comprehensive records of all Winter Service activities.
- Directing all available resources.
- Liaising when necessary with the Road Weather Forecast Provider.
- Monitoring the weather forecasts and actual weather conditions.
- Monitoring actual road surface temperatures and road conditions.
- Assessing the requirement to carry out precautionary or post salting treatment or snow clearance on the network, deciding appropriate start times and rates of spread and arranging for the work to be carried out, monitoring effectiveness of treatments and amending instructions, when necessary, due to a change in conditions
- Assessing the need to carry out post salting or snow clearance of the remaining road network during prolonged spells of sub-zero temperatures, and ensuring the works are carried out when necessary and as resources permit.
- In the event of deteriorating conditions, notably major blockages to the primary route network and/or severe drifting snow to contact:
 - a) The Emergency Services Control Rooms. (Police, Ambulance, Fire)
 - b) Ayrshire Civil Contingency Team
 - c) Communications Team.
 - d) Chief Executive and/or other nominated Senior Officers.
- Maintaining a list of contractors with suitable plant and operatives for snow clearing purposes and hiring in such when necessary to do so.
- Liaising on operational matters when appropriate with the adjacent Local Authorities to ensure continuity of treatment across authority boundaries.
- Liaising when appropriate with the
- Emergency Services and Public Transport Operators.
- Providing accurate and timely information to the Risk Management Centre and South Ayrshire Monitoring Station.
- Ensuring the Transport workshops are notified of any vehicle faults and that they are repaired without delay.

Document	Winter Service Plan 2020/21	Revision	1
WINT-1	Page 6 of 123	Date	02/11/2021

- Arranging with Transport workshops for appropriate staff to be available on 24 hour call out to deal with any serious mechanical breakdown(s).
- Checking and calibrating salt spreading equipment and weighbridges and retaining of the certificates.
- Ensuring all operatives receive adequate and appropriate training in Winter Service activities and those drivers are issued with 'route cards' to record details of the treatment times, etc.

1.3 Decision Making Process

- 1.3.1 The day to day routine operational decisions will be made by the Winter Controller using weather forecasts provided by Weather Services Provider and the road and weather monitoring data.
- 1.3.2 The Overall Winter Period shall be from 1st October until 15th May, with the Core Winter Period being from the fourth Monday of each October ending on the second Monday of April (these periods can be extended should conditions warrant).
- 1.3.3 On receipt of a weather forecast or update, the Winter Controller will reach a decision on action for the next 24 hours from one of the five following options:
 - a) Pre-salting to commence immediately after the period of mobilisation.
 - b) Pre-salting to commence at a specified time (e.g. 1900 hours).
 - c) Treatment is likely - but start time cannot yet be determined.
 - d) Treatment is possible - conditions being monitored by patrol vehicles (marginal night).
 - e) No action planned (minimum forecast temperature + 1°C).
- 1.3.4 Only if treatment is planned the decision record will include the required salt spread rate. Any post salting or snow clearance subsequently required shall also be recorded. This decision and any updates will be distributed to appropriate roads personnel and stakeholders.
- 1.3.5 The Winter Decision Matrix is contained in the Severe Weather Operations Plan.
- 1.3.6 Post salting would be carried out under the following circumstances.
 - a) On Priority 1 Routes where salt has been washed off due to rain.
 - b) Remaining roads may be treated by salting as determined by priority, progress, conditions, and resources.
- 1.3.7 Snow clearing operations will be undertaken across the network as conditions dictate.
- 1.3.8 When snow is forecast, the Priority 1 routes will be treated in accordance with the Treatment Matrix.
- 1.3.9 Two stages of snow clearing can be considered
 - a) Light falls of undisturbed accumulation of snow reaching a depth of less than 10mm in depth. Normally be dealt with by one or more repeated applications of salt.

Document	Winter Service Plan 2020/21	Revision	1
WINT-1	Page 7 of 123	Date	02/11/2021

- b) Moderate/Heavy falls of snow greater than 10mm in depth that may also be associated with drifting. These conditions may require the use of ploughs, specialised equipment and/or mechanical excavators in addition to salting. As ploughing may block junctions and side roads, arrangements will be made to remove any resulting accumulations of snow, as resources permit.
- 1.3.10 Normal priority (when resources permit) will be to clear the snow from Minimum Winter Network Routes (Snow Routes) then clear the remaining Priority 1 Routes before dealing with the Priority 2 and Priority 3 routes.
- 1.3.11 Under extreme conditions the priority will be to clear and treat the Minimum Winter Network Routes (Snow Routes).
- 1.4 Arrangements with Adjacent Authorities**
- 1.4.1 Reciprocal arrangements will be made with adjacent authorities to ensure the most efficient and consistent treatment of routes at boundaries, and co-operation in providing during winter service operations.
- 1.4.2 At the boundary of the Trunk Roads Network, Ayrshire Roads Alliance shall treat to the give way/ stop markings. The Trunk Road Operating Company shall treat the main trunk road carriageways, slip roads including lanes and splays at acceleration and deceleration lanes and splays.
- 1.5 Resilience Levels**
- 1.5.1 Resilience Levels for salt stocks shall be as follows.
- 1.5.2 Resilience for the Overall Winter Period shall be a minimum of 8 days at heavy salting levels, equating to 4400 tonnes. Heavy salting is calculated as two treatments of the Priority 1 network and one treatment of priority 2 networks.
- 1.5.3 Resilience for December and January shall be increased to a minimum of 15 days at heavy salting levels, equating to 8,150 tonnes.
- 1.5.4 If stock levels fall below 4,400 tonnes, consideration will be given to introducing salt conservation methods in accordance with the Salt Resilience Plan (Severe Weather Operations Plan), this may include restricting treatment to the Minimum Winter Network Routes (Snow Routes) and the use of salt/ grit mixes.
- 1.6 Potential Resilience Measures relating to COVID19**
- 1.6.1 Due to uncertainties concerning COVID19, Ayrshire Roads Alliance have had to prepare for potential changes in how we delivered our Winter Service for 20/21. The main area of concern was around the number of available drivers should one or more of our depots be affected. We delivered our full service.
- 1.6.2 Should our resources fall below the required level of drivers for 21/22, the drivers 'off shift' for each week will be required to concentrate on winter duties only, ensuring the required rest is taken to avoid fatigue and adherence to the Working Time Directive, unless emergency situations occur. They will enter the depot only for gritting duties and will minimise contact with colleagues and others out with the workplace wherever possible during this time.
- 1.6.3 Our 20 Priority 1 routes will be treated only and were we may have a shortage of drivers, some drivers will cover 2 routes each, therefore deviating from the 3hr treatment time to a 6hr treatment time.

Document	Winter Service Plan 2020/21	Revision	1
WINT-1	Page 8 of 123	Date	02/11/2021

- 1.6.4 Other winter service activities shall continue as normal, with adherence to the COVID19 guidance being reinforced.
- 1.6.5 Where possible our Duty Supervisors will ensure the same driver/vehicle during any potential 'spike' and safe systems of work are followed with regards to cleaning of the vehicles.

2.0 Quality

2.1 Quality Management Regime

- 2.1.1 The Winter Service Plan is included in the Ayrshire Roads Alliance Quality System.
- 2.1.2 The Ayrshire Roads Alliance Quality System is externally audited and verified.

2.2 Document Control Procedures

- 2.2.1 All quality documents are controlled and held on a computerised document management control system and are available for viewing by all members of Ayrshire Roads Alliance staff.
- 2.2.2 The Winter Service Plan will be distributed as detailed in section 2.3.

2.3 Distribution of Documents

- 2.3.1 The Winter Service Plan is issued and made available as listed below
 - Operational Staff
 - Elected Members
 - Ayrshire Civil Contingencies Team
 - Neighbouring Councils
 - Emergency Services and Community Planning Partners
 - Ayrshire Shared Services Joint Committee
 - Other Council Departments and Services
 - Community Councils
 - Equality Forum Group

2.4 Information Recording and Analysis

- 2.4.1 The Winter Service is contained within the Quality System as one process which contains three main procedures for Winter Preparation, Winter Action and Operations.
- 2.4.2 Winter Preparation Process
 - Preparation of different categories of treatment routes
 - Training of personnel
 - Calibration of plant
 - Placing and maintaining of grit bins
 - Ordering an adequate supply of salt for the start of the overall Winter period.
 - Allowing for additional resources should they be required for extreme conditions.

Document	Winter Service Plan 2020/21	Revision	1
WINT-1	Page 9 of 123	Date	02/11/2021

- Liaison with external and internal partners.
 - Winter Action & Operations Process
- 2.4.3 The decision-making process for the Winter Controller.
- Issuing of Instructions.
 - Distribution of Instructions.
 - Procedures for gritting and ploughing.
 - Response Times.
 - Monitoring and reporting of actions completed.
 - Maintaining an adequate supply of salt.
- 2.5 Arrangements for Performance Monitoring and Updating**
- 2.5.1 Performance Monitoring
- 2.5.2 Ayrshire Roads Alliance evaluates and compares the following 5 local key performance measures for each winter period: -
- Percentage of vehicles ready for winter by 18th October '21
 - Percentage of pre-salted routes completed within 3 hours target time
 - Route efficiency
 - Actual winter expenditure per kilometre of Carriageway/per kilometre of gritted route.
 - Tonnage of salt used
- 2.5.3 These performance measures are reported on a regular basis to the Ayrshire Shared Service Joint Committee.
- 2.5.4 In addition, Ayrshire Roads Alliance will submit an annual return to the Association for Public Service Excellence (APSE) on behalf of East and South Ayrshire Councils to compare Ayrshire Roads Alliance performance against other participating Councils.
- 2.5.5 The Winter Service Plan is reviewed annually and amended and updated before the 1st of October to include any revisions and changes to the service delivery.
- 2.5.6 The Quality System has been updated to the standard specified in ISO9001:2015 which includes the concept of monitoring and continuous improvement in line with the concepts of best value.

3.0 Route Planning for Carriageway and Footway

3.1 General

- 3.1.1 The pre and post salting routes of East and South Ayrshire are reviewed on an annual basis taking into account any alterations to the roads which are treated under the specified gritting criteria.
- 3.1.2 The main treatment options are as follows:
- Precautionary pre salting
 - Post salting

Document	Winter Service Plan 2020/21	Revision	1
WINT-1	Page 10 of 123	Date	02/11/2021

- Snow routes
- 3.1.3 Routes have been devised to ensure efficient coverage within reasonable timescales.
- 3.1.4 Sets of Route Cards listing all precautionary salting routes are held electronically by the Head of Service, Ayrshire Roads Alliance.
- 3.1.5 Route descriptions for Priority 1 gritting route are available within Appendix 4 and Appendix 5 of this document.
- 3.2 Carriageways Routes for precautionary treatment**
 - 3.2.1 The following roads will be treated if it is forecast that ice or snow is likely to be present on road surfaces:
 - *Priority 1* – Strategic Routes and Main Distributor Routes, i.e. all 'A' class roads i.e. A70, A71, A77, A713, A735, A736, A759, A719, A714, A79 (This does not include for A77, A78, A76, M77 and a part of the A77 which are responsibility of the Transport Scotland). Safe and reliable access to emergency facilities including fire and rescue, police, ambulance services and hospitals. Other public services (Schools, health centres etc.) access to towns and villages, routes with high percentage of school traffic, designated public transport routes, access to main industrial and business centres.
 - 3.2.2 The duty Winter Controller has authority to amend agreed treatments should updated forecasts or conditions make this necessary. Where changes in the expected weather are forecast the duty Winter Controller will contact the Winter Supervisors and instruct them to take the necessary action. All such changes will be recorded in the electronic Vaisala Manager System.
 - 3.2.3 A review of gritting treatment hours was carried out. This incorporated treatments which take place between the hours of 2200hrs and 0500hrs Mon-Sun. In extreme conditions and where the forecast merits action, treatments can be actioned during these times. We will continue to have 24/7 standby cover. There is little benefit and high cost associated with treating roads when traffic is minimal, to be fully effective, de-icing requires the actions of vehicles to aid dispersal and to break up snow and ice.
- 3.3 Carriageway Routes for post treatment**
 - 3.3.1 Given the presence of ice or snow on roads and a forecast that these conditions will last for a period longer than it would take to treat the roads, appropriate treatment may take place to cover the following:
 - Priority 2 routes to be treated as resources permit when sub-zero temperatures are forecast to continue to last beyond midday, following completion of Priority 1 routes.
Priority 2 – Secondary distributor roads, including B class roads not included on Priority 1 routes, local distributor roads in residential areas.
 - Priority 3 Routes will be treated as resources permit when sub-zero conditions are forecast to continue over an extended period.
Priority 3 – Local access roads in residential and industrial areas, minor rural through roads and C class roads not included on priority 1 or priority 2 routes. Other roads with restricted access, cul-de-sac etc. not treated during post salting actions will be treated as resources permit utilizing available and suitable special plant.

Document	Winter Service Plan 2020/21	Revision	1
WINT-1	Page 11 of 123	Date	02/11/2021

- Reported trouble spots not treated during precautionary treatment, or requests for assistance from emergency services or social services, as resources permit.

3.4 Carriageway Routes for snow clearance

3.4.1 At any time the priority is as follows:

- While snow is still falling, only the Minimum Winter Network Routes (Priority 1/Snow Routes) will be ploughed and treated in order to target resources and to keep these routes open for traffic. After snow has stopped falling but is lying, the remaining Priority 1 precautionary routes will be ploughed and treated before commencing Ploughing and treatment on Priority 2 and Priority 3 routes as resources and conditions permit.
- Additional resources to be called out to plough and treat Priority 2 and Priority routes after snow has stopped or when conditions warrant.

3.5 Footway Routes for Precautionary Treatment

3.5.1 The following footways will be considered by the Head of Service – Ayrshire Roads Alliance for treatment if it is forecast that ice or snow is likely to be present on road surfaces or where surfaces are wet, with temperatures forecast to remain below zero until 10.00 the next working day.

- Priority 1 - Urban shopping areas and precincts. And other areas or pedestrian concentration, and where applicable within the Priority 1 footway route safe and reliable footway access to emergency facilities including fire and rescue, police, ambulance services and hospitals, and other public services (Schools, health centres etc.).
- Priority 1 footways will only be treated as resources permit.

3.6 Footway Routes for Post Treatment

3.6.1 The following footways will be treated if it is forecast that ice or snow is likely to be present on road surfaces, with temperatures forecast to remain below zero over a prolonged period:

- *Priority 2* – Main access routes to town and village centres, special needs of disabled people or older people where critical footway access is required. (Residential homes etc.). Known problem areas including significant gradients. Exposed areas and other topological areas.
- It is not possible with the resources to treat all of the footways. Ayrshire Roads Alliance encourages self-help through the placing of Community grit bins and other grit bins throughout the roads network and when requested, resources to community groups.

3.7 Routes for cycle route treatment

3.7.1 Road cycle routes will be treated along with the adjacent carriageway when resources permit. No treatment will be carried out on off-road cycle routes.

3.8 Response and Treatment Times for Carriageway Treatments

3.8.1 When ice is predicted to be present during the morning peak traffic flow (prediction from the previous evening's forecast) precautionary salting of routes should be completed in 3 hours from the start of treatment and before 08:00 hours.

Document	Winter Service Plan 2020/21	Revision	1
WINT-1	Page 12 of 123	Date	02/11/2021

- 3.8.2 For Emergency Salting and Ploughing the time between the decision to start treatment and the start of treatment will be no more than one hour except where pre- planned gritting is scheduled.

3.9 Response and Treatment Times for Footway and Cycle Route Treatments

- 3.9.1 Priority 1 footway routes should be completed in 5 hours from start of treatment and before 10:00 hours.
- 3.9.2 Priority 2 footway routes will be instructed for treatment as and when resources permit.
- 3.9.3 On-road Cycle Routes will be treated with the adjacent carriageway as resources permit.
- 3.9.4 Where resources permit ad hoc visual footway route inspections will be undertaken and footway treatments will commence on instruction.

3.10 Allocation of plant, vehicles, equipment, and materials to routes

- 3.10.1 The road network is serviced by three Roads Depots located at Galston, Coylton, and Girvan.
- 3.10.2 The necessary resources are stored and located within these depots to treat the designated networks carriageway routes.
- 3.10.3 The treatment of the networks footway routes shall be undertaken by Ayrshire Roads Alliance Internal Roads Maintenance Units, East Ayrshire Councils Outdoor Services and by private Contractors.

3.11 Location and maintenance of grit bins

- 3.11.1 Approximately 729 grit bins are sited locally within the network, for self- help by the public, these bins are topped up on a monthly basis as required, and as resources permit. The number of grit bins and their locations are continually under review and the current Grit bins locations are available as noted on Ayrshire Roads Alliance web page.
- 3.11.2 Grit bins will only be placed at locations where the criteria within the grit bin policy (Appendix 2) are met within the network, Community grit bins are available to encourage self- help and are located within town and village Centre's. These bins will be topped up on a monthly basis as required and as resources permit. The number of Community grit bins and their locations are presently under review and the current Community Grit bins locations are available on Ayrshire Roads Alliance web page.

3.12 Community self-assistance

- 3.12.1 To provide assistance and improve footway treatment resilience, over the last 6 years Ayrshire Roads Alliance have engaged with local Community Groups and others. We currently have 123 groups assisting with self-help footway gritting where we provide training, salt materials, footway spreading equipment and appropriate PPE for Groups to undertake treatments within their local Areas. Requests for these resources should be made in writing to the Head of Service.
- 3.12.2 ARA were the proud winners of the Highways Award for Winter Resilience in October November 2021.

Document	Winter Service Plan 2020/21	Revision	1
WINT-1	Page 13 of 123	Date	02/11/2021

4.0 Weather Prediction and Information

4.1 Forecasting, Patrols, and other Decision Support Information

- 4.1.1 The support information for use in 'Decision Making' will usually be a combination of the Road Weather Forecast, Road and Weather Monitoring Data and Patrolling of the network.
- 4.1.2 Ayrshire Roads Alliance have contracted a Weather Service Provider to supply forecasts for the network each day over the period 1st October to 15th May.
- 4.1.3 The road weather forecasts are provided via a computer link to Ayrshire Roads Alliance during the normal working day or a portable computer to the Winter Controller out with normal hours.
- 4.1.4 Should any problems exist with the computer systems for obtaining the weather forecast alternative arrangements are in place
- 4.1.5 Four Ice Detection Outstations are installed near Corwar, Dalmellington, Dunlop and Fenwick. In addition the Alliance has access to a further 7 Outstations on the Trunk Road Network and access to information from the stations is available to the Winter Controllers.
- 4.1.6 The data available from the outstations, which can be presented in both graphic and tabular format include:
 - a) Road surface temperature
 - b) Deep road temperature
 - c) Air temperature
 - d) Wind speed and direction
 - e) Relative humidity
 - f) Precipitation.
 - g) Surface state (including level of salt present on road surface)
- 4.1.7 The Weather Service Provider has direct access to the information from these outstations, which Improves the accuracy of their forecasts.

4.2 Information to be provided by Forecaster

- 4.2.1 Specification of Forecasts Three forecasts are provided to Ayrshire Roads Alliance daily at 05.00, 11.00 and 17.00 (including weekends). Each forecast details the expected weather and road conditions for the forthcoming 36 hour period and contains the following information
 - a) Details and confidence of hazards from Ice, Hoar Frost, Snow, Fog, Strong Wind and Rain,
 - b) Wind speed and direction, road state, and snow depth accumulations.
 - c) A 2-10 day forecast of expected hazards of Ice, Hoar Frost, Snow, Fog, Strong Wind and Rain with comments on the outlook.
- 4.2.2 The Weather Service Provider carries out 24 hour monitoring of conditions and if these vary significantly they will contact the Winter Controller directly to advice of the change and when appropriate will issue an updated forecast.

Document	Winter Service Plan 2020/21	Revision	1
WINT-1	Page 14 of 123	Date	02/11/2021

- 4.2.3 The Weather Service Provider provides a 24 hour consultancy service for the Winter Controller for advice and clarification of forecasts.

4.3 Timing and distribution of information

- 4.3.1 The Winter Controller will receive the weather forecast each day at 0500hrs, 1100hrs and 1700hrs and will assess and consult on the forecast and any other relevant data and decide what action to take, if any. An instruction will then be issued to the relevant staff and external bodies detailing the action proposed.
- 4.3.2 Each morning at 0500hrs the Winter Controller will assess the forecast and make a decision for the coming 12-24hr period. This will allow the Depot Supervisors to plan their works for the coming day starting at 0800hrs. At 1700hrs the Winter Controller will assess the latest forecast and make adjustments (if considered necessary) to the next 12-24hr period. All decisions are recorded with the electronic Vaisala Manager System and are available to relevant staff at all times.
- 4.3.3 If the weather changes out-with these times the Weather Service Provider will contact the Winter Controller directly with a revised forecast.
- 4.3.4 Any amendment made to previous instructions after an update from the Weather Forecast Provider, either by phone or during the evening update will be passed to the Winter Supervisors immediately and the appropriate records updated.

4.4 Maintenance of ice detection equipment

- 4.4.1 Maintenance and service arrangements are in place for outstations and the appropriate repairs.

5.0 Organisational Arrangements and Personnel

5.1 Organisation chart and employee responsibilities

- 5.1.1 The organisation of staff for Winter Service is shown on Appendix 1.
- 5.1.2 Employee Responsibilities
- 5.1.3 The Winter Controller is responsible for monitoring the road and weather conditions, for reaching an appropriate decision on treatment of the network and informing Winter Supervisors and others responsible for overseeing the works and recording the decision.
- 5.1.4 The Winter Supervisor is responsible for utilising and managing effectively all resources under his control i.e. labour, plant and materials to effect swift treatment of the road network. He/she will also complete all relevant paperwork timeously and update and record any alterations to decisions made.
- 5.1.5 The Depot Management Teams will ensure adequate resources are available for the supervisor to undertake his duties efficiently with regard to performance indicators.
- 5.1.6 The Winter Service Operatives are responsible for undertaking gritting duties in a safe and efficient manner. He/she shall complete all relevant paperwork for submission to the Winter Supervisor.
- 5.1.7 All personnel involved in the Winter Service will acquaint themselves of the duties, responsibilities and working procedures necessary for them to carry out their tasks in an effective and efficient manner.

Document	Winter Service Plan 2020/21	Revision	1
WINT-1	Page 15 of 123	Date	02/11/2021

5.1.8 The contact details and numbers are listed below.

- a) During Normal Working Hours: Risk Management Centre 03457 240000
Ayrshire Roads Alliance 01563 503160
South Ayrshire Monitoring Station 0300 123 0900
- b) Out with normal working hours Risk Management Centre 03457 24 0000
South Ayrshire Monitoring Station 0300 123 0900

5.2 Employee duty schedules, rotas, and standby arrangements

- 5.2.1 Special arrangements will be made to ensure the availability of trained and competent operatives and supervisory staff for the Overall Winter Period
- 5.2.2 A weekly rota system is in operation for the Winter Controllers, Winter Supervisors and Winter Service Operatives.

5.3 Additional Resources

- 5.3.1 During severe weather conditions the Head of Service - Ayrshire Roads Alliance may augment resources from other East Ayrshire Council Departments and/or private contractors using the externally procured Winter Maintenance Assistance Contract.
- 5.3.2 Labour rates will be agreed with these departments and interested private contractors prior to the onset of the winter period.
- 5.3.3 All contractors will supply a list of contact numbers to provide when available resources, on a 24 hours a day and 7 days a week basis.
- 5.3.4 Contractors will attend a Winter Service Presentation in all aspects of Health and Safety in respect to the winter service operations before being accepted as suitable service providers.

5.4 Training

- 5.4.1 Winter Controllers and Winter Supervisors will undertake Forecast and Treatment training as provided by the Weather Service Provider.
- 5.4.2 Winter Supervisors and Winter Service Operatives will receive training on all aspects of their duties including a familiarization exercise with all plant and procedures before the onset of the Overall Winter Period.
- 5.4.3 All Winter Service Operatives will either have an SVQ certificate in Winter Maintenance or be working towards achieving one.

5.5 Health and Safety Procedures

- 5.5.1 The Head of Service - Ayrshire Roads Alliance is responsible for the Health, Safety and Welfare for staff.
- 5.5.2 During winter service operations, drivers/ operatives must adhere to the following health and safety documentation:
 - East Ayrshire Council Health and Safety Policy
 - Departmental Health and Safety Policy Statement
 - Health, Safety and Welfare at Work Employee Handbook
 - Activity/Risk Assessments for Individual Activities
 - Compliance with EAC Health, Safety and Welfare standards.

Document	Winter Service Plan 2020/21	Revision	1
WINT-1	Page 16 of 123	Date	02/11/2021

6.0 Plant, Vehicles and Equipment

6.1 Plant, Vehicles and Equipment

- 6.1.1 The availability of vehicles and ancillary equipment is detailed in the Severe Weather Operations Plan.
- 6.1.2 The current fleet replacement program will ensure that Winter Service obligations can be met. Programmed repairs and servicing to the fleet will be carried out during the summer months. The remainder of the fleet will be inspected and serviced as per the Fleet Management Inspection and Servicing Schedule.
- 6.1.3 Global Positioning System (GPS) tracking equipment is installed in vehicles to provide accurate control of gritting and to establish accurate treatment records.

6.2 Location of Plant, Vehicles and Other Equipment

- 6.2.1 Ayrshire Roads Alliance vehicles will operate from the three Road Depots located at Galston, Coylton, and Girvan.

6.3 Garaging, servicing and maintenance arrangements

- 6.3.1 Mechanics will be available on an out-of-hours rota to maintain and repair the dedicated salting vehicles and equipment.

6.4 Contact and hire arrangements for Contract plant

- 6.4.1 Contract and hire companies on the East Ayrshire framework contracts will be solely hired. Only in extreme weather and emergencies conditions will other private contract and hire companies be considered.
- 6.4.2 During severe weather conditions the Head of Service - Ayrshire Roads Alliance may increase resources from other East Ayrshire Council Departments and private contractors.

6.5 Calibration Procedures

- 6.5.1 Pre-winter checks and calibration on all vehicles, plant and equipment, used by Ayrshire Roads Alliance for Winter Service provision will be carried out by the 1st October and confirmation of their readiness to the Head of Service - Ayrshire Roads Alliance will be made by the Operations Manager. An additional calibration for winter vehicles will be undertaken during mid-season and before 31st January. Transport Services will ensure that the controls of all spreading equipment are calibrated and clearly marked for specified rates of spread up to a maximum of 40g/m².
- 6.5.2 Salt is the principal de-icing agent used in the Roads Network and should be supplied in compliance with BS3247 (2011).
- 6.5.3 The original copies of road salt test certificates, weighbridge certificates and vehicle and equipment calibration shall be kept as part of the Ayrshire Roads Alliance Quality System to allow both internal and external auditing.

6.6 Fuel stocks and locations

Document	Winter Service Plan 2020/21	Revision	1
WINT-1	Page 17 of 123	Date	02/11/2021

- 6.6.1 Fuel stocks for the dedicated salt spreading and other vehicles being used for winter maintenance operations are provided at Galston Depot, Coylton Depot, Girvan Depot and Transport Depot, Crookedholm. The vehicles will remain topped up ready for immediate use. Standard East Ayrshire Council fuelling arrangements apply. Fuel stocks are remotely monitored by Transport Services on a regular basis and orders placed to ensure fuel resilience during extreme weather conditions.

7.0 Salt and De-Icing Materials

7.1 Location and capacity of stocks for salt and other materials

- 7.1.1 Salt will be held in salt barns at Galston Depot, and Coylton Depot and externally stored at Girvan Depot.
- 7.1.2 The combined quantity of salt held in stock at the start of October will be a minimum of 12,000 tonnes. The minimum stock level will be 4,400 tonnes, rising to 8,1500 tonnes in December and January (to cover the holiday period) based on level of resilience as recommended in the United Kingdom Roads Liaison Group (UKRLG) review of February 2009.
- 7.1.3 Calibrated weighbridge systems for stock control and salt usage purposes, are available at the three Roads Depots.
- 7.1.4 The depots will supply regular reports on salt usage to the Operations Manager who will monitor usage and place supplementary orders for salt as required.

7.2 Testing Arrangements

- 7.2.1 Salt for use during winter will meet the requirements of BS 3247 'Salt for Spreading – Coarse Rock Salt'. On request of the Head of Service – Ayrshire Roads Alliance, salt materials will be tested when delivered to confirm compliance with the specification. An additional mid- season testing of depot salt materials will be undertaken.

7.3 Loading Arrangements

- 7.3.1 Depot Managers are responsible for ensuring a loading shovel is available for loading the salting vehicles. A 'backup unit', in case of breakdown of the primary loading shovel should be available at the depot at all times during the Overall Winter Period.

7.4 Pattern of Spreading

- 7.4.1 The gritters are to be set to salt a width of carriageway which will be both lanes of single carriageways or both lanes of one side of a dual carriageway.
- 7.4.2 The gritter will generally travel in the left-hand lane and the spreading pattern will be set to cover both lanes unless multiple passes are required on a wide one-way road.

7.5 Salt Spread Rates

- 7.5.1 The variable nature of winter conditions makes it difficult to define exact treatments and salt applications. Guidance on appropriate spread rates is given in the winter treatment matrix in the Severe Weather Operations Plan.

Document	Winter Service Plan 2020/21	Revision	1
WINT-1	Page 18 of 123	Date	02/11/2021

- 7.5.2 Sustained low temperatures occur only rarely. In this event however, account will be taken of the need to increase the rate of spread of salt. Below -11°C the action of salt is ineffective and other measures will be required e.g. introducing salt/grit mixtures.

7.6 Salt Purchasing Arrangements and Supplies

- 7.6.1 Ayrshire Roads Alliance is a member of the Scotland Excel consortium of local authorities for the purchase of winter salt. The tender includes for the main delivery of salt to the three Roads Depot Facilities before the start of winter and also includes for further deliveries of salt, upon request, to replenish the stockpiles as necessary.
- 7.6.2 Other Council Departments
- 7.6.3 Other Council Services and Stakeholders must make their own provision for treatment of areas out with the limits of the public road network, which are not the responsibility of the Ayrshire Roads Alliance.
- 7.6.4 Supply of salt to others
- 7.6.5 No salt purchased by Ayrshire Roads Alliance will be available for purchase by external parties.

8.0 Operational Communications

8.1 Technical systems information

- 8.1.1 Good communications are essential to ensure speedy and effective response to winter conditions.
- 8.1.2 The Winter Controllers and Winter Supervisors will be issued with mobile phones with access to the internet and internal email systems.
- 8.1.3 Treatment plans and timings, ongoing actions, alterations to plans and salt usage will be recorded within electronic Vaisala Manager system. This web- based system will be accessible by all Winter Controllers and Supervisors. All information is archived by the software supplier and is held remote from the Council network.
- 8.1.4 During salting and snow clearance operations each Winter Operative has access to a mobile phone to maintain contact with Winter Supervisors and the operations depot.
- 8.1.5 All Vehicles are fitted with a Tracker and GPS system which allows the sections of road which have been treated to be clearly identified along with a time of treatment.

8.2 Reporting arrangements and protocols

- 8.2.1 The Winter Controller will report the 'Daily Decision' to the appropriate roads personnel and stakeholders as soon as possible after it has been reached.
- 8.2.2 The standard method of distributing the information will be via electronic Vaisala Manager system.
- 8.2.3 On request, the Winter Supervisor will prepare a daily report on the previous 24 hour road conditions and treatments, any ongoing treatments and salt usage for the Head of Service - Ayrshire Roads Alliance. The report will be required by 0845 hours daily Monday – Friday.
- 8.2.4 The Winter Supervisors will record details of salt usage via the electronic Vaisala Manager system and supply separate information regarding vehicle, equipment and plant breakdowns and repair actions taken.

Document	Winter Service Plan 2020/21	Revision	1
WINT-1	Page 19 of 123	Date	02/11/2021

- 8.2.5 The Winter Supervisors will report details such as all additional plant and labour etc., hired from other Departments or Contractors, as soon as practical, to the Winter Controller.
- 8.2.6 During prolonged spells of severe conditions a decision will be made whether to set up a manned 24 hour control centre. This operational centre will be based at Gauchalland Depot. When required a Strategic Centre will be based at the Risk Management Centre who can as required liaise with South Ayrshire Monitoring Station. Throughout the treatment period, Winter Supervisors will continue to report and update to the Winter Controller on operational progress and actions taken during snow clearing operations and dealing with prolonged spells of ice.

9.0 Information and Publicity

9.1 Local Press and broadcast information

- 9.1.1 It is important that the general public is aware of and understands Ayrshire Roads Alliance approach to the Winter Service. Publicity is to be given before the beginning of the Core Winter Period describing the level of service provision and contact points.
- 9.1.2 During the Overall Winter Period and particularly during prolonged spells of snow and ice information will be made available to the public by the Communications Team via
 - a) Press releases
 - b) Local Radio Stations
 - c) East and South Ayrshire Intranet / Web Site
 - d) Motoring organizations
 - e) The Head of Service - Ayrshire Roads Alliance is authorised to respond to the Press, Radio and Television on matters relating to local road conditions.

9.2 Publicity

- 9.2.1 General advice and information for the public concerning the Winter Service will be catered for by publishing a Winter Advisory leaflet which will be available to the public via Ayrshire Roads Alliance and at selected locations throughout the Roads Network, such as libraries etc.

9.3 Other Key Local Contact Information

- 9.3.1 For information only The Head of Service - Ayrshire Roads Alliance will inform the Police Force Control and Ayrshire Civil Contingency team when snowfalls in excess of 30mm are predicted.
- 9.3.2 Reports from the Police or Risk Management Centre or South Ayrshire Monitoring Station of dangerous road conditions will be acted on as soon as practicable, when resources are available.
- 9.3.3 The Head of Service - Ayrshire Roads Alliance will consult the Police and advice the Risk Management Centre and South Ayrshire Monitoring Station when any road is closed due to winter weather conditions.

Document	Winter Service Plan 2020/21	Revision	1
WINT-1	Page 20 of 123	Date	02/11/2021

9.3.4 The Risk Management Centre and South Ayrshire Monitoring Station are responsible for dealing with the general public's telephone inquiries regarding the Winter Service. The Risk Management Centre has access to electronic Vaisala Manager system and other key information regarding winter service operations to enable an efficient response to public enquiries.

9.3.5 Risk Management Centre is in operation 24 hours a day, 7 days a week, and can be contacted on 0345 724 0000. South Ayrshire Monitoring Station is in operation 24 hours a day, 7 days a week, and can be contacted on 0300 123 0900

9.4 Records

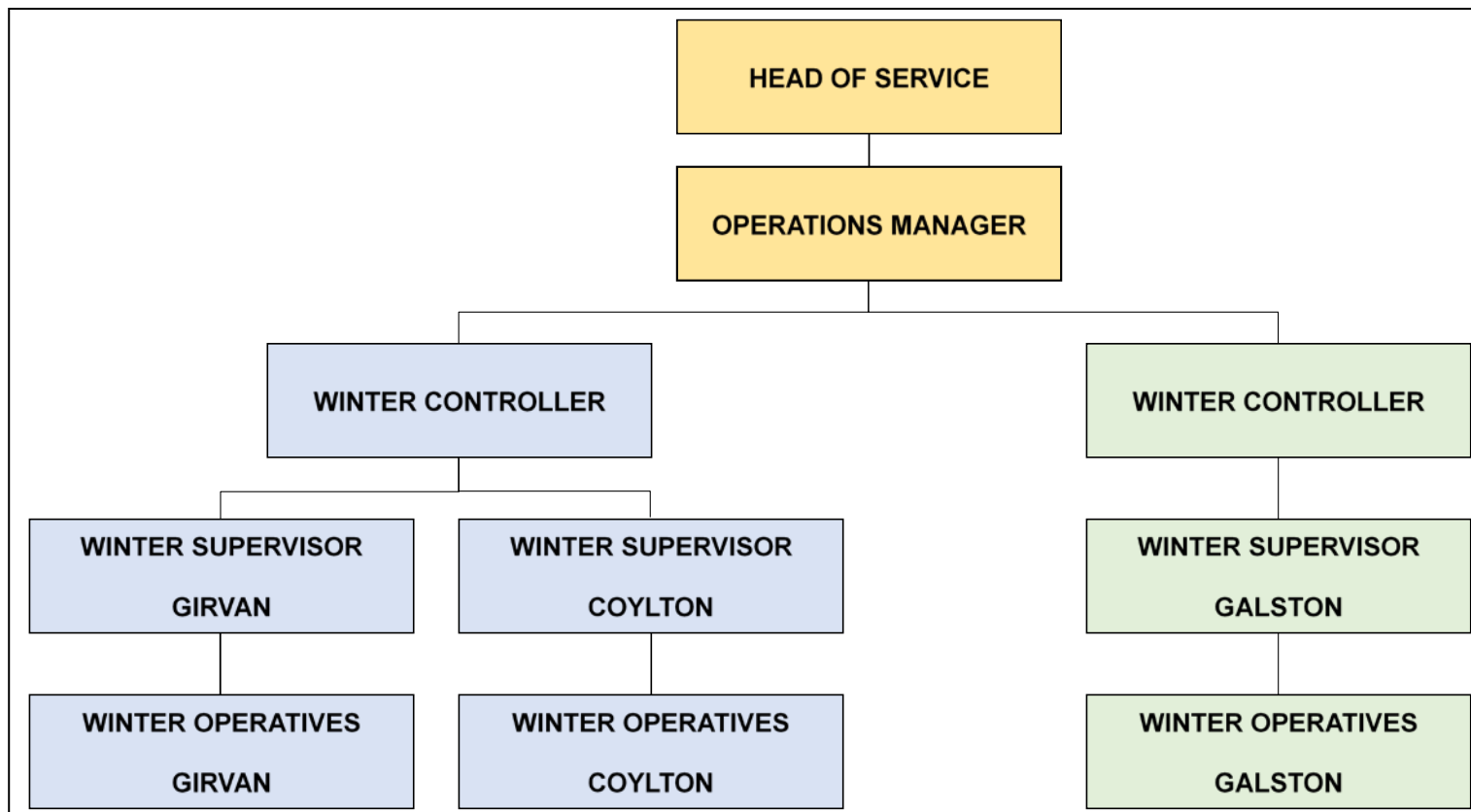
9.4.1 Records will be retained by Ayrshire Roads Alliance for 3 years and retained in archives for a further 7 years.

9.5 Responsibilities and Guidance for Providing Information

9.5.1 The Head of Service - Ayrshire Roads Alliance is responsible for guidance of the information to be supplied.

Document	Winter Service Plan 2020/21	Revision	1
WINT-1	Page 21 of 123	Date	02/11/2021

Appendix 1 Winter Service Organisation Chart



Document	Winter Service Plan 2020/21	Revision	1
WINT-1	Page 22 of 123	Date	02/11/2021

Appendix 2 Grit Bin Policy & Requests

- 1) Ayrshire Roads Alliance shall provide grit bins for self-help by members of the public. These shall be sited locally in accordance with this policy.
- 2) The location of Community grit bins and other grit bins will be recorded in an electronic database and are available on the Ayrshire Roads Alliance website.
- 3) Grit bins shall only be located where the following criteria are met:
 - a) The location is not on a precautionary carriageway route;
 - b) The gradient is greater than 1 in 15, or at a junction with a known history of accidents;
 - c) The location shall not obstruct the passage of pedestrians, a minimum of 1.5m clearance on the footway is required;
 - d) The location shall not obstruct sight lines;
 - e) The location is not within 200m of another grit bin location.
 - f) The location is within an urban area.
 - g) The location is within the boundary of the public road. The Ayrshire Roads Alliance will not provide grit bins in private areas or car parks for internal use by either the Council or any other public or private property such as schools, parks, hospitals, old people's home etc. unless a service level agreement is in place.
- 4) Grit bins will only be located where they can be filled from a lorry. The grit bins shall be replenished at the start of the Winter Period and on a monthly cycle during the Winter Period, as resources permit.
- 5) Grit bins will generally be left in place during the summer months, unless there is a history of vandalism at a particular location.
- 6) Requests for salt bins must be in writing using the application form which is also available to download from the Ayrshire Roads Alliance website.

A request will not be accepted unless a location to site the grit bin has been agreed. Therefore, even if the criterion for locating a grit bin is met, none will be provided if the adjacent residents cannot agree a position.

Appendix 3 Request to Site a Grit Bin

1 Proposed Location

1.1 Street Name _____

1.2 Location _____

2 Checklist

	Yes	No		Yes	No	Roads Check
Steep Gradient			Location within Urban Area			
Footway Wider than 1.8m			Location on Public Road			
Location out with junction visibility splay			More than 200m from nearest grit bin			

3 Application

This application is submitted on behalf of

Organisation _____

Name _____

Address _____

Date _____

Request Granted: Yes ☐ No ☐

Reason for Refusal (if applicable) _____

Instruction issued to provide grit bin Yes ☐ No ☐ Date _____

Signed _____

Neighbour Notification

The following neighbours have been consulted and have no objections to a grit bin being placed at this location.

Name	Address	Date	Agreement Y/N	Signed

Appendix 4 Priority 1 Carriageway Gritting Routes – East Ayrshire Council

Gauchalland Depot in Galston operates eight Priority 1 Carriageway gritting routes, mainly but not exclusively, confined to the north of the Council area; and includes the major towns of Kilmarnock and Cumnock.

Meadowhead Depot in Coylton operates two of the eight Priority 1 Carriageway gritting routes for the East Ayrshire area, mainly in the south of the Council area; and includes the major towns of Dalmellington and New Cumnock.

Method

Acting on advice received from the Council's weather service provider, Priority 1 Carriageway routes will receive precautionary treatment prior to the onset of frost / ice.

Included within the Priority 1 Carriageway routes are all A class and B class roads and strategic C class and unclassified roads.

Roads which meet the Council's criteria of precautionary treatment applied to a minimum of one road servicing council schools and emergency service depots, plus roads servicing high concentrations of employment, commercial outlets and densely populated residential areas and other roads of strategic importance are also included.

The exception to this arrangement is when the Council's weather service provider advises that there is no risk of hazardous winter road conditions in any of the two climatic domains. In this event altered routes which exclude roads in a particular climatic domain are used.

A small number of roads within residential areas may be partly treated in order to optimise a predetermined routing system.

Gauchalland Depot – Priority 1 Carriageway Gritting Route 1 EAST AYRSHIRE COUNCIL

Town /Village	Road Number	Description
Galston	A719	A719 from Depot to Brewlands St Galston
Galston	-	Bridge St Galston Polwarth St Galston
-	A71	A71 Roundabout
	A719	A719 to Moscow A719 to Waterside A719 to A77
	A77	A77 to B764 Eaglesham Moor Rd
	A719	A77 from junction A719 to B778
	B778	B778 to Stewarton
Stewarton	-	Loudoun St Stewarton Holm St Stewarton Vennal St Stewarton Rigg Rd Stewarton
	A735	A735 Dunlop Rd
		Clerkland Rd
	A735	A735 to Dunlop
	A735	A735 Lugton
	A735	A730 Junction
Dunlop	-	Allanvale Dunlop Kirkland Rd Dunlop Main St Dunlop Newmill Road Dunlop C7 Dunlop Kirkland Rd Dunlop Dunlop Junction on B706 A736 Junction
Stewarton	B778	B778 to Stewarton Dalry Rd Stewarton Standalane to junction Lainshaw St Stewarton
	A735	A735 to B769 B769 to Dykehead
	C20	C20 Irvine Rd
Crosshouse to Gatehead	B751	B751 Sunnyside B751 Crosshouse B751 Gatehead

Gauchalland Depot – Priority 1 Carriageway Gritting Route 1 EAST AYRSHIRE COUNCIL (Continued)		
Town /Village	Road Number	Description
	A759	A759 to B7064 Junction A759 Dundonald Road Dundonald Rd to junction at st marnock St Access to Crosshouse Nursery (Annandale Gardens) Loudoun Academy Car Park (morning patrol)
		Return to depot

Gauchalland Depot - Priority 1 Carriageway Gritting Route 2 EAST AYRSHIRE COUNCIL		
Town /Village	Road Number	Description
Kilmarnock	A735	A735 Queens Drive Kilmarnock Asda Roundabout Kilmarnock Victoria Roundabout Kilmarnock Wellbeck St Kilmarnock Old Mill Rd Kilmarnock Fowlds St Kilmarnock Kings St Kilmarnock St Marnock St Kilmarnock John Finnie St Kilmarnock West George St Kilmarnock Portland St Kilmarnock Witch Rd Kilmarnock Hill St Kilmarnock Kilmaurs Road to A735 through Kilmaurs to Main St Stewarton
Stewarton		Main St Stewarton B769 Lainshaw St Stewarton Main St Stewarton High St Stewarton Dean St Stewarton Old Glasgow Rd Stewarton Windy-Yett EAC boundary
	U24	Cairn Road (U24)
	C108	C108 to Fullwood C108 to Newmill House Junction C7
	C7 C7	C7 to Neilston Boundary C7 to Clerkland Road return to C7 A735 Junction
Stewarton		Lamberton Rd Ravenscraig Rd Kilwinning Rd Rigghead Rd Braemore Rd Kirkmuir Drive Kingaussie Avenue Elgin Avenue Kinloch Avenue junction of Dalry Rd Sim St

**Gauchalland Depot - Priority 1 Carriageway Gritting Route 2 EAST AYRSHIRE COUNCIL
Continued**

Town /Village	Road Number	Description
		Lothian Rd Crusader Crescent David Dale Avenue Cutsburn Rd Pokelly Place Cutsburn Rd Jubilee Drve Cairnduff Place School Robertland Rigg Old Mill View Bowes Rigg Alisa View Junction Dunlop St New St Avenue St Springwell Place Bridgend
	C117	C117 to B751 Junction C117 to A735
Kilmarnock		John Walker Drive Dean Lane High St
		Bellfield Roundabout slip and off slip on to A71 Riccarton Road Avenue Square morning patrol Stewarton Car Park & Ride morning patrol
		Return to Depot

Gauchalland Depot - Priority 1 Carriageway Gritting Route 3		
Town /Village	Road Number	Description
Hurlford	B7037	B7037 to Hurlford Cross A71 Riccarton Road to Bellfield Interchange
Kilmarnock	B7038	Hurlford Rd to junction Carron Avenue Hurlford Rd Campbell St roundabout B7038 Campbell St Ayr Rd Spittallhill Farm entrance Campbell St Low Glencairn St West Shaw St McClelland Drive South Hamilton St Portland Rd Irvine Road B7081 junction of Munro Avenue Western Rd Roundabout at junction of Hill St Western Rd Bonnyton Rd Bonnyton Rd C24 West Langlands St Green St Hill St Witch Rd Western Rd B7064 Glasgow Rd B7038 Roundabout Southcraig Avenue Roundabout at Flotta Place Glasgow Rd Dalmusternock Roundabout Fenwick South Roundabout
	B7061	
Fenwick		Main Road Fenwick B778 Stewarton Rd B778 to Roundabout A77 junction

AYRSHIRE ROADS ALLIANCE EAST AYRSHIRE COUNCIL AREA		
Town /Village	Road Number	Description
	B751	B751 to Kilmaurs
	C75	C75 Kirkton Road (morning)
		Creashaugh Rd (morning)
Kilmarnock		Kilmaurs Rd Altonhill Avenue Kilmaurs Rd Tourhill Rd Onthank Drive junction Onthank Drive Meiklewood Rd junction Meiklewood Rd Craufurdland Rd junction Craufurdland Rd Jura Rd Inchmurrin Rd Fetlar Drive Benbecula Rd Cumbrae Drive Davaar Drive Inchmurrin Drive Western Rd Hill St Garden St Soulis St Union St Wellington St Dean St Beansburn Glasgow Rd Inchmurrin Drive Jura Rd Craufurdland Rd Western Rd Hareshaw Drive Meiklewood Rs Amlaird Rd Wardneuk Drive Hareshaw Gardens Wardneuk Drive

AYRSHIRE ROADS ALLIANCE EAST AYRSHIRE COUNCIL AREA

Town /Village	Road Number	Description
Kilmarnock		Western Rd junction Wardneuk Drive Onthank Drive junction Meiklewood Rd Kirkton Rd Tourhill Rd Bus terminus junction Onthank Drive Knockinlaw Rd Western Rd Inellan Drive Campbeltown Drive Dean Rd South Dean Rd B7082 Grassyards Rd Roundabout exit Strawberry Bank Dean Lane Grassyards Rd B7082 to Junction A719 Return to depot Waterside St Car Park (morning) Foregate North (morning) Foregate South (morning) Portland St Car Parks (morning) Onthank PS (morning) Kirkstyle PS (morning)

Gauchalland Depot - Priority 1 Carriageway Gritting Route 4 EAST AYRSHIRE COUNCIL		
Town /Village	Road Number	Description
Galston	A719	Gauchalland Depot A719 Orchard St Titchfield St
	A71	A71 junction A71 roundabout A71 Newmilns A71 Darvel A71 Stoneyford Farm
Darvel		Kirkland Rd Patterson Terrace Hutchinson Drive Campbell St East Campbell St Burn Rd East Main St Jamieson Rd to Primary School gates Jamieson Rd to East Main St A71 to Fleming St Fleming St Edith St Dublin Rd to A71
Newmilns		Mill Rd Ladeside Greenhead Greenside East Strand Campbell St West Campbell St King St A71 junction High St Drygate St Hillside Place U32 Borebrae U32 Huggincraig Rd Clearmount Avenue Mair St Bridgend Brown St Windyhill Rd Nelson St

Gauchalland Depot - Priority 1 Carriageway Gritting Route 4 EAST AYRSHIRE COUNCIL (Continued)		
Town /Village	Road Number	Description
Galston		Wallace St
	B7037	To B743
Mauchline	B743	To Mauchline Cross Jean Armour Drive Carrick View Beechwood Rd
	C35	C35 Tarbolton Rd
	B744	To A719
Galston		Cross St Riverside Rd Western Rd Meadowside Rd Glebe Rd Cemetery Rd Wallace St Barr St Return to depot
		Priestland bus turning area(bad weather forecast) Newmilns London Rd & Greenside Car Parks (&morning patrol) Galston Primary School drop off Western Rd (morning patrol) Galston Henrietta St car park (morning patrol) Darvel Primary School access Jamieson Rd (morning patrol)

Gauchalland Depot - Priority 1 Carriageway Gritting Route 5 EAST AYRSHIRE COUNCIL

Town /Village	Road Number	Description
Galston		Portland Rd Standalane
Hurlford		A71 Hurlford Cross (Circle RA) Main Rd Crookedholm Grougar Rd
Kilmarnock		London Rd Sturrock St Armour St High Glencairn St East Shaw St junction East Shaw St Roundabout Bentinck St James Little St Titchfield St Portland St South Hamilton St Irvine Rd B7081 Haining Avenue Whatriggs Rd New St Hurlford Rd Kinlock Rd Lammermuir Rd Treeswoodhead Rd Wyvis Rd Dungavel Rd Tinto Avenue Loudoun Avenue Campsie Rd
Kilmarnock		Methven Avenue Roundabout Rathlin Avenue Central Avenue Shortlees Rd Loreny Drive Knockmarloch Drive Roundabout exit Langside Avenue Blacksyke Avenue Knockmarloch Drive Blacksyke Avenue

Gauchalland Depot - Priority 1 Carriageway Gritting Route 5 EAST AYRSHIRE COUNCIL Continued		
Town /Village	Road Number	Description
Kilmarnock		Central Avenue Burnpark Rd Roundabout on Caprington Avenue Loreny Drive
	C8	C8 to junction Main St
Craigie		Craigie Village to Junction C119
	C119	Junction C8
Kilmarnock		Caprington Avenue Central Avenue Ayr Rd Cunninghame Drive Darnley Drive Stonyhill Avenue Elderslie Crescent Bruce St Witchknowe Rd Turnberry Drive Portland St Hill St Garden St Green St Car Park and Bus Station Holehouse Rd Culzean Crescent London Rd Walker Avenue Alloway Avenue Samson Avenue Mackinlay Place Nursery Avenue New Mill Rd Grassyards Rd Strawberry Bank South Dean Rd Kennedy Drive Sutherland Drive McDonald Drive MacCallum Place MacPhail Drive MacNaughton Drive

Gauchalland Depot - Priority 1 Carriageway Gritting Route 5 EAST AYRSHIRE COUNCIL Continued		
Kilmarnock		MacKellar Place MacKenzie Drive MacPhail Drive Well Park Avenue
	C33	C33
Moscow		Moscow
Galston		Loudoun Avenue Holms Rd Neville Drive Holms Rd to Depot
Kilmarnock		CAR PARKS: (MORNING PATROLS) West George St Sturrock St East Sturrock St West Queens St Fowlds St St Marnock St Titchfield St Princess St EAC London Rd

Gauchalland Depot - Priority 1 Carriageway Gritting Route 6 EAST AYRSHIRE COUNCIL

Town /Village	Road Number	Description
	A719	To A76 Junction
	A71	A71 Dual C/way Moorfield RA B7064 Roundabout
	B7081	B7081 Crosshouse Roundabout Hospital Roundabout
	B7081	B7081 to Springside Boundary
	U16	U16 Thornton Rd
	A759	A759 Gatehead
	B7064	B7064 Roundabout
Kilmarnock		Dumfries Drive NeePhill View
	B7064	B7064 to Irvine Rd RA B7081
	A71	A71 to Dreghorn Roundabout Moorfield
	A71	A71 Moorfield Roundabout Bellfield Interchange
Kilmarnock		Queen's Drive Hurlford Rd Campbell St Roundabout A71 on ramp A71 off ramp Campbell St Bentinck St Brewery Rd Lawson St Dick Rd Rennie St Elmbank St Elmbank Avenue Dick Rd Beech Avenue Roundabout Beech Avenue Pine Rd Hazel Avenue Hawthorn Square

Gauchalland Depot - Priority 1 Carriageway Gritting Route 6 EAST AYRSHIRE COUNCIL Continued		
Town /Village	Road Number	Description
Kilmarnock		Willow Rd Cedar Rd Olive Rd Grange Terrace Annanhill Avenue Bonnyton Rd Munro Avenue Munro Place Fullarton St Portland Rd Grange St Park St North Hamilton St Strand St Nelson St Grange Place Croft St Langlands St Old Irvine Rd Woodstock St Woodstock Place Sandbed St Bank St John Dickie St Mount Avenue Holms Rd Aird Avenue Barbadoes Rd Burnside St Holmquarry Rd Old Rd
Kilmarnock		Blair Avenue Union St Academy St Cessnock Rd Liffnock Avenue Richardson Avenue Mayfield Avenue Craigie Rd Kerrmuir Avenue Dumleyhill Drive Return to Depot

Gauchalland Depot - Priority 1 Carriageway Gritting Route 7 EAST AYRSHIRE COUNCIL

Town /Village	Road Number	Description
	A70	A70 Cumnock to Cronberry to Riverside Gardens Cronberry A70 to South Lanarkshire Boundary
	B743	B743 Muirkirk to South Lanarkshire Boundary (turn at layby)
Muirkirk		Burn Ave Muirkirk Wellwood St Kirk Green Furnace Rd Henderson Dr Millar Rd Stitt Pl Pagan Walk
	B743	B743 to junction B7037
Mauchline		B743 from junct B7037 to Junct Mary Morrison Dr Mauchline
	B705	B705 to A76
		Station Rd to corner turn
	B705	B705 to Junction B713 Catrine
	B713	B713 to A76
	C50	C50 Brackenhill Rd to B7036 right to A70 ochiltree
	B7036	B7036 from C50 to Darlaw View
		Return to Depot

Gauchalland Depot - Priority 1 Carriageway Gritting Route 8 EAST AYRSHIRE COUNCIL

Town /Village	Road Number	Description
		B713 to Junction B705
		B705 to Sorn St
		Sorn St to Sloan Street
		Sloan Street to James Taylor Avenue
		James Taylor Avenue to John Street
		John Street to Sloan Street
		Sloan Street RA to Junction B705
		B705 to B713
		From B713 to Sloan Street junction James Taylor Avenue
		B705 to Auchinleck Academy
		Auchinleck Academy (access mornings only)
		B705 to Roundabout Mauchline Rd
		Mauchline Rd to A76 Roundabout
		Templeton RA off slip back
		C62 to B7036 (Barony Rd)
Auchinleck		Barony Rd to Coal Rd
		Coal Rd to Barbieston Rd
		Barbieston Road to Junction Church Street
		Church Street
		Backrogerton Crescent
		Barbieston Road to Milne Avenue
		Milne Avenue to Backrogerton Crescent
		Loupe then Milne Avenue upside
		Old Avenue to Sorn Road
		School Rd and Dalshalloch Rd (mornings only)
		Main St to Well Rd
		Well Rd to Church St
		Main St to A70 Cumnock
Cumnock		New Bridge St
		A70 to Roundabout
		Cumnock Academy Access (mornings only)
		Kerr & Smith
		Hearth Rd to Hearth Pl right to Car Rd right to Cairn Rd
		to College to B7083
		Glaisnock St to Greenholm Rd
		Greenholm Rd
		Glaisnock St to Townhead St
		Townhead St to Edgar Ave
		Edgar Ave to Barshare Rd loup

Gauchalland Depot - Priority 1 Carriageway Gritting Route 8 EAST AYRSHIRE COUNCIL		
Town /Village	Road Number	Description
		Barshare Rd loup
		Drumbrochan Rd turn right treat Holland Cres
		Dalglish Ave to Drumbrochan Rd
		Drumbrochan Rd to Holland Cres
		Drumbrochan Rd to A70 Barrhill Rd
		Lugar St
		Hamilton Pl
		B7083 to junction B7046
		B7046 to A70
		Cumnock College to Craigens Rd
Craigens		Craigens Rd to Lamont Cres
		Lamont Cres right to Ryderston Dr
		Craigens Road to Loganhill road
		Avisyard Rd to Davaar Ave to MacIntyre Cres loup
Cumnock		Holmburn Rd to Glaisnock St
		Glaisnock St to A76
		Glaisnock Rd U719 to U720
	U719	U719
	U720	U720 Rigg Rd to B741
Logan		Loganhill Road to Logan Avenue
		Logan Ave right to Boswell Cresto Bryce Ave right to Paterson Ave
		Logangate Terrace
		Logan Ave to Glenmuir Water Rd U729
	U729	U729 to A76
		Peesweep Brae Rigg Rd
	C65	C65 to Sorn
		Return to Depot

Meadowhead Depot - Priority 1 Carriageway Gritting Route 9 EAST AYRSHIRE COUNCIL

Town /Village	Road Number	Description
	B742	B742 to Junction A713
	A713	A713 to Junction B7034 Dalrymple
	B7034	B7034 to Dalrymple at Garden Street
	B742	B742 turn left treat Forglen Rd turn left treat Hill View to School
		B742 to A713
	A713	A713 to Junction B742 Coylton
Patna		A713 to Patna Dalharco Ave Dalharco Ave
		Dalharco Ave to Carnshalloch Ave
		Carnshalloch Ave to Whitehill Ave including RA
		Whitehill Ave to Carskeoch Dr
		Carskeoch Dr to Doonside Ave
		Doonside Ave to Whitehill Ave
		Daldowie Rd turn right Grit Dalvennan Ave
		Carskeoch Dr to Grit Blaney Ave
		Main St to Whitehill forestry Access
		Main Street to A713
Dalmellington & Bellsbank	A713	A713 from Dalharco Ave to Boundary B7013 to RA
		High Main St to Church Hill
		Church Hill to Melling Terr
		Main St B741 to Ayr Rd
		Merrick Drive
		Dalfarson Ave right to Ness Glen Rd right to Glen Mount
		Dalfarson Ave to Craiglea Cres
		Craiglea Cres to Merrick Dr
		Doon Academy turning area
		Gateside Rd
		Burnton
		Gateside Rd to B741
	B741	B741 High main Street to Roundabout
	B741	B741 to U720 Dalricket Rd
	U720	U720 Dalricket Rd to bridge
	B741	B741 to A76
New Cumnock		C90 to Cemetery turn (mornings only)
		Lime Rd to Greenbraes Dr to Blarene Dr
		Connel View

Meadowhead Depot - Priority 1 Carriageway Gritting Route 9 EAST AYRSHIRE COUNCIL
Continued

Town /Village	Road Number	Description
		Lanehead Terr to Burnton Pl
		Burnton Pl to Lime Rd
		Connel View
		Highpark Ave to Redree Pl
		Redree Pl
		Ashmark Ave to Burnton Place to right Dalhanna Dr Loch Browan Cres
		Loch Browan Cres
		Dalhanna Drive to Greenhead Rd
		Greenhead Rd to A76
		Castlemains Ave
		Holm Rd
		Mansfield Rd to haulage turning
		Travel to Depot

Meadowhead Depot - Priority 1 Carriageway Gritting Route 10 EAST AYRSHIRE COUNCIL		
Town /Village	Road Number	Description
	A70	A70 to A76 Cumnock
Cumnock		Holmhead Rd left to Hospital Rd right Bute Rd right Stepend Rd
		Templand Dr left Holmhead Rd right to Robbiesland Dr to Sullivan Way
		Holmhead Rd left to Oakbank Dr to Robbiesland Dr
		Holmhead Rd to Hospital Rd straight
	B7046	B7046 to B730
	B730	B730 to A713
	C89	C89 Rankinston to Roundabout
Drongan		B730 to junction Watson Terrace Drongan
		Watson Terrace to Taiglum Pl
		Taiglum Pl
		Lane Cres to Glenraig St
		Glenraig St to Hanniston Ave
		Hanniston Ave to DrumWhill Rd
		Mill of Shield Rd to Coronation Road to Barbieston Ave
		Littlemill of Shield Road turn left grit Carston Ave right grit Millmannoch Ave
	B730	B730 to A70 junction
		B730 to Stair
		C82 Trabbochburn Rd
		C3 to Mauchline
		C49 to ochiltree
Ochiltree		Main Street Ochiltree to Mote Toll to A70
	U728	U728 to B7046
	B7046	B7046 to B730 Sinclairston to Drongan
	A70	A70 Coalhall west bound
		Travel to Depot

Appendix 5 Snow Carriageway Gritting Routes – East Ayrshire Council

Gauchalland Depot North Snow Route 1

SECTION	ROUTE No.	DESCRIPTION
1	GALSTON	THE CROSS TO TICHFIELD STREET
	A71	GALSTON BYPASS TO ROUNDABOUT(CIRCLE) TO NEWMILNS TO DARVEL TO BOUNDARY
	DARVEL	BURN ROAD TO CAMPBELL ST TO JAMIESON ROAD travel on A71 to Newmilns
	NEWMILNS	HIGH ST TO KINGS ST return to Galston
2	B7037	FROM GALSTON TO B743 SORN return to Galston
	A719	A71 JUNCTION TO MOSCOW TO WATERSIDE TO A77
	A77	FROM A719 JUNCTION TO EAGLESHAM ROAD B764 turn and return to A719 junction
	A77	FROM A719 JUNCTION TO FENWICK MOTORS B751
3	B751	FROM FENWICK MOTORS TO KILMAURS CROSS TO CROSSHOUSE
	B7081	CROSSHOUSE TO KILMARNOCK
	B7064	B7081 TO MOORFIELD ROUNDABOUT

Gauchalland Depot North Snow Route 2

SECTION	ROUTE No.	DESCRIPTION
1		START AT DEPOT
	A71	FROM GALSTON TO HURLFORD CROSS
	A735	FROM QUEENS DRIVE KILMARNOCK TO LUGTON return to Dunlop
	B706	FROM DUNLOP TO A736 JUNCTION travel on A736 to B778 Junction
2	B778	FROM A736 JUNCTION TO STEWARTON
	B769	FROM MAIN STREET STEWARTON TO BOUNDARY CAIRN ROAD return to Stewarton
	STEWARTON	DAVID DALE AVE TO CRUSADER CRES TO KILWINNING RD
	B778	FROM STEWARTON TO FENWICK
	FENWICK	MAIN ST Travel on B751 to Kilmarnock
	B7038	FROM B751 TO KILMARNOCK
	KILMARNOCK	GLASGOW ROAD TO WESTERN RD TO MUNROE AVE TO IRVINE RD TO PORTLAND RD
	KILMARNOCK	TO DUNDONALD ROAD

Gauchalland Depot North Snow Route 3

SECTION	ROUTE No.	DESCRIPTION
1		START AT DEPOT
	A719	FROM GALSTON TO CROSSROADS A76 travel on A76 to Bellfield roundabout
	A71	FROM A77 BELLFIELD ROUNDABOUT TO DREGHORN ROUNDABOUT CIRCLE BACK TO BELLFIELD
	A71	FROM BELLFIELD ROUNDABOUT TO HURLFORD CROSS turn left
2	B7073	FROM HURLFORD CROSS TO LONDON ROAD KILMARNOCK
	KILMARNOCK	STURROCK ST TO ARMOUR ST TO HIGH GLENCAIRN ST TO LOW GLENCAIRN ST
	B7038	FROM CAMPBELL ST ROUNDABOUT TO A77 SLIP ROAD turn and proceed to Hurlford Cross
	B7073	FROM HURLFORD CROSS TO A76 ROUNDABOUT

Gauchalland Depot South Snow Route 1

SECTION	ROUTE No.	DESCRIPTION
1	B7046	CUMNOCK TO DRONGAN
	B730	DRONGAN TO COALHALL turn back to Drongan
2	DRONGAN	MILL O SHIELD ROAD TO COYLE CRES TO CORONATION ROAD TO BARBIESTON AVE
	B730	FROM DRONGAN TO POLNESSAN (INCLUDING RANKINSTON BRAE)
	A713	POLNESSAN TO PATNA
3	PATNA	DOON BRIDGE TO CARNSHALLOCH AVE TO MAIN ST turn right A713
	A713	PATNA TO DUMFRIES & GALLOWAY BOUNDARY AT POLNASKIE BRIDGE
	A713	(Turn at Boundary) travel back on A713 to Bellsbank
4	BELLSBANK	BELLSBANK BRAE TO MERRICK DRIVE TO DALFARSON AVE TO CRAIGLEA CRES
	DALMELLINGTON	MAIN STREET TO CHURCH HILL turn and proceed to B741
	B741	DALMELLINGTON TO NEW CUMNOCK
	New Cumnock	LIME ROAD TO GREENBRAES TO BLARENE DRIVE TO DALHANNAH DRIVE
		(Return to Depot)

Gauchalland Depot South Snow Route 2

SECTION	ROUTE No.	DESCRIPTION
1	A70	DEPOT TO SOUTH LANARKSHIRE BORDER AT GLENBUCK
		(Turn at lay-by East of Parish Holm), travel back on A70 turn right to
	B743	MUIRKIRK TO SOUTH LANARKSHIRE BOUNDARY
		(Turn at lay-by) travel back on B743 to Muirkirk
2	MUIRKIRK	WELLWOOD ST TO KIRK GREEN TO HENDERSON DR TO MILLERS RD turn right travel on A70 to
	B743	WELLWOOD TO MAUCHLINE turn left at Mauchline cross travel on A76 turn left to
	MAUCHLINE	CARRICK VIEW TO JEAN ARMOUR DRIVE TO MARY MORRISON DR TO HAMILTON AVE
3	B705	MAUCHLINE TO CATRINE
	CATRINE	NEWTON ST TO SLOAN ST TO SORN ST
	B705	CATRINE TO AUCHINLECK
	AUCHINLECK	OLD AVE TO BARBIESTON RD TO COAL RD
		(Return to Depot.)

Gauchalland Depot South Snow Route 3

SECTION	ROUTE No.	DESCRIPTION
1	A70	CUMNOCK TO COALHALL travel on B742 to A713
	A713	BOGHALL TO POLNESSAN turn and travel to Hollybush
2	B7034	HOLLYBUSH TO DALRYMPLE
	B742	DALRYMPLE TO BOGHALL travel on B742 and A70 to Ochiltree
3	OCHILTREE	MAIN ST TO MILL ST
	B7036	OCHILTREE TO AUCHNLECK travel on B7083 to C23
4	C23	RIGG ROAD FROM B7083 TO A70 LUGAR travel on A70 to Cumnock
	CUMNOCK	DUMBROCHAN RD TO EDGAR AVE TO BARSHARE RD TO TOWNHEAD ST

Appendix 6 Priority 2 Carriageway Gritting Routes – East Ayrshire Council

South Area Priority 2A

SECTION	ROUTE No.	DESCRIPTION
1	CATRINE	WOOD ST TO LAIGH ROAD
	MAUCHLINE	WELTON ROAD
	C3	FROM C82 JUNCTION TO B730
	C61	OCHILTREE STATION ROAD FROM B7046 TO A70
	C97	SKARES STATION ROAD FROM A70 TO B7046
2	OCHILTREE	BROOM CRES,GALLOWLEA AVE,
	U728	FROM MOAT TOLL TO B7046 JUNCTION
	C11	FROM WHITEHILL PATNA TO U765 GLASTRON ROAD
3	DRONGAN	FROM B730 TO END LOMOND VIEW THEN LOMOND CRESCENT return to B730
	DRONGAN	MILLMANNOCH ROAD FROM TAIGLUM PLACE TO PETTOCH ROAD return to B730
4	DALMELLINGTON	HOPES AVE, TO PATERSON ST,TO PARK STREET,TO CROFT ST, TO TOWNHEAD travel to
	BELLSBANK	AUCHENROY CRES, TO DALCAIRNEY ROAD,TO RECAWR AVE, TO MINNOCH ROAD TO
	BELLSBANK	HILLCREST TO MacATERICK DRIVE
	BELLSBANK	CORSERINE TERR, TO ERIFF ROAD TO MOSSDALE TERR, TO NESS GLEN ROAD
	B741	FROM DALMELLINGTON TO STRAITON

South Area Priority 2B

SECTION	ROUTE No.	DESCRIPTION							
1	AUCHINLECK	CAMERON DRIVE TO BALLOCHMYLE AVE TO GLENSHAMROCK DRIVE TO ARRAN DR,DIPPOL CR							
	C22	FROM AUCHINLECK TO A70 CRONBERRY							
	CUMNOCK	ROBERTSON AV TO McDONALD ST TO WARRICK DR, to HOLLAND CR ,TO HALL TERR,							
	CUMNOCK	TO CARR ROAD TO NANS TERR,TO HEARTH PLACE, TO HEARTH ROAD, TO JOHN BAIRD ST.							
	CUMNOCK	TO KINGS WAY TO HEMMINGS WAY TO HILLSIDE VIEW TO							
2	CUMNOCK	JOHN ALLAN DRIVE,TO BLACKFAULDS ROAD,TO NETHERTHIRD ROAD TO MENZIES AVE							
	U729	GLENMUIR ROAD.FROM LAIGH GLENMUIR TO DALBLAIR ROAD END							
	U721	DORNAL ROAD. FROM GLENMUIR ROAD END and return							
	U721	DORNAL ROAD. FROM GLENMUIR ROAD TO A70							
	C47	FROM MANSEFIELD ROAD NEW CUMNOCK TO A76 MARCHBURN							
3	C90	FROM CEMETERY TO TURNING POINT AT CRAIGDARROCH							
	U743	FROM C36 BENSTON SMITHY TO B8046 SKARES ROAD							
		Return to Depot							

North Area Priority 2A

SECTION	ROUTE No.	DESCRIPTION						
	KILMAURS	BENRIG AVE, TO EAST PARK DRIVE TO HABBIEAULD ROAD, TO LADESIDE ROAD						
1	C129	FROM A735 KILMAURS TO JUNCTION C6						
	C6	FROM JUNCTION C129 TO KILWINNING ROAD STEWARTON						
	STEWARTON	CASTLEHILL ROAD, TO ARRAN VIEW, TO CUNNINGHAM WATT ROAD, TO CLERKLAND ROAD, TO						
2	STEWARTON	WESTBURN ROAD TO MERRYGREEN PLACE (INCLUDING TOP OF HILL)						
	STEWARTON	ROBERTLAND RIGG, ANNICK CRESCENT, RIVERSIDE ROAD, GAMESHILL VIEW travel to Dunlop						
	U13	AIKET ROAD						
	U26	CLERKLAND ROAD FROM A735 TO C7						
	DUNLOP	WEST VIEW TERRACE						
	C125	FROM B706 TO B778 TO C6						
	C6	FROM STEWARTON TO TORRANYARD						
3	C112	FROM B769 TO A77						
	C113	FROM C112 TO STEWARTON						

North Area Priority 2B

SECTION	ROUTE No.	DESCRIPTION						
	C133	NEWMILNS TO DARVEL						
	DARVEL	ANDERSON DRIVE, BRAES COURT AVE, HILLVIEW ROAD						
1	DARVEL	DUBLIN RD (bottom part), TO MUIR DR, TO LINTMILL RD, TO WEST EDITH ST, TO NEW STREET						
	DARVEL	WEST DONNINGTON ST TO EAST DONNINGTON ST TO						
	DARVEL	JAMIESON ROAD (BOTTOM PART FROM A71 TO JUNCTION CAMPBELL STREET)						
	C134	DARVEL TO NEWMILNS						
	C104	FROM BROWN STREET TO U1						
	U1	GALSTON MOOR ROAD FROM C104 TO A71						
2	NEWMILNS	CAMPBELL STREET						
	U33	WOODHEAD ROAD						
	U3	FOULPAPPLE - ALSTONPAPPLE FROM NEWMILNS TO DARVEL FULL LENGTH						
	GALSTON	HENRIETTA ST, TO MAXWOOD RD, TO CAIRN VIEW, TO BELVEDERE VIEW TL TO CAIRN TERRACE						
	GALSTON	COMPLETE BELVEDERE VIEW AND DUKE STREET TO B7037						
3	GALSTON	TO BARWOOD ROAD TO CATHERINE DRIVE TO MILRIG CRES.						
	C53	FROM A719 FIVEWAYS TO TREESWOODHEAD ROAD KILMARNOCK						
	C120	FROM A759 GATEHEAD TO B7038 SPITTALHILL						
	U61	FROM B7038 TO INCHGOTTRICK FARM						
4	C66	FROM A719 TO C85 WATERSLAP						
	C75	FROM RAITH ROAD FENWICK TO C66 JUNCTION						
	C85	FROM FENWICK TO C10						
	KILMARNOCK	BALMORAL ROAD						
5	KILMARNOCK	SIMONSBURN ROAD AND UMBERLY ROAD						
	KILMARNOCK	SAMSON AVENUE AND GARVEN COURT						

Appendix 7 Priority 3 Carriageway Gritting Routes – East Ayrshire Council

North Route 1 Priority 3

SECTION	ROUTE No.	DESCRIPTION
		Gauchalland Depot travel C6 Stewarton
	DUNLOP	WEST VIEW TERRACE, THE FIELDING, LIVINGSTON TERRACE, GLAZERT ROAD, BURNS WAY , WOODSIDE PLACE
	DUNLOP	SOLOMONS VIEW
1	KILMAURS	EAST PARK CRESCENT, BOYDORR CRESCENT, CARMEL PLACE, WEST PARK CR, BEAUFIELD GRD, LADESIDE GRDNS
	KILMAURS	VINE PARK AVENUE, VINE PARK DRIVE,, GLENCAIRN TERRACE,, MILLHILL AVE, CATHERINE PLACE, FOURACRES DR
	KILMAURS	STANDALANE, YARDSIDE ROAD, CROFTHED ROAD, LANGMUIR QUADRANT, BELLSLAND CRESCENT, SHAW ROAD
	KILMAURS	MARSHALL GARDENS, TOWERHILL AVENUE, KIRKTON AVENUE, KNOCKLANDHILL, HILLMOSS
	KNOCKINTIBER	CASTLE VIEW TO HEMPHILL VIEW TO PLANN ROAD
	U45	KIRKLAND ROAD FROM KNOCKENTIBER TO NORTH AYRSHIRE BOUNDARY
	U57	BUSBIE MAINS ROAD FROM C20 IRVINE ROAD TO NORTH AYRSHIRE BOUNDARY
2	CROSSHOUSE	CROSSDENE ROAD, SPRINHILL AVE, CREDON DR, HUNTER ROAD, THORNTON AVE, CRAIGLEA AVE, LAURIELAND AVE
	CROSSHOUSE	WOODBANK RD, WOODLEA COURT, ANNANDALE VIEW, ANNANADALE CRES, PADDOCK VIEW (Thorntoun Estate)
	U18	CARMELBANK ROAD FROM B751 CROSSHOUSE TO U16 GATEHEAD
	U51	NETHERCRAIG ROAD FROM U16 to end
	U11	STACKLAWHILL ROAD FROM C6 TO C20
	U12	BANKEND-AULTON ROAD FROM C6 TO C20
	U13	AITKET ROAD FROM B706 TO B778
3	U26	CLERKLAND ROAD FROM A735 TO C7
	U27	STRUTHERS ROAD FROM C7 TO C100
4	U39	GOUKNEST ROAD FROM B778 TO A735
	U46	LANGTON ROAD FROM B706 TO A735

North Route 2 Priority 3

SECTION	ROUTE No.	DESCRIPTION
		Gauchalland Depot travel to Stewarton
1	STEWARTON	MORTON ROAD TO FLEMING DRIVE TO LOTHIAN ROAD (PART) TO McBETH ROAD TO KILBRIDE ROAD
	STEWARTON	MONTGOMERIE DRIVE
	STEWARTON	TO COCKLEBIE ROAD TO KINLOCH AVE TO ELGIN AVENUE TO KIRKMUIR DRIVE(PART) TO CORSEHILLBANK STREET
	STEWARTON	EGLINTOUN ROAD TO BALVENY COURT TO LANGSHAW COURT TO LOCHRIG COURT TO GRAHAM TERRACE TO
	STEWARTON	GILMOUR STREET TO THE CRESCENT TO HAMILTON PLACE TO VICTORY WAY TO DARLINGTON VIEW TO
	STEWARTON	JUBILEE RISE TO VICTORIA COURT TO
2	STEWARTON	NETHERLAND ROAD TO GAMESVHILL VIEW TO ANICK CRESCENT TO RIVERSIDE ROAD TO KIRBY GLEBE
	STEWARTON	AILSA VIEW, ARMOUR PLACE, BONNET COURT, EWING WAY, KERSLAND GAIT, STANE BRAE, DRAFFEN MOUNT
	STEWARTON	CAULDHAME RIGG, FAIRWAYS, HOLMHEAD DRIVE, ANNICKBANK, CAIRN CLOSE, DORNIE CLOSE
3	STEWARTON	LAMBERTON ROAD, CASTLEHILL BOWMAN PLACE, KIRKMUIR ROAD, BRAEMORE ROAD, ARRAN VIEW
	STEWARTON	CUNNINGHAM-WATT ROAD ONTO CLERKLAND ROAD travel to WESTBURN ROAD ONTO MERRYGREEN PLACE to
4	C108	From B769 Junction to FULLWOOD TO BOUNDARY return to C7 turn right to U21 junction
	U21	BROCKWELLMUIR ROAD From C7 to A735 turn left on A735 to Dunlop
	C100	FROM DUNLOP TO BOUNDARY turn left to Dunniflat
5	U28	DUNNIFLAT FROM BOUNDARY TO U89 HALKET
	U89	HALKET ROAD FULL LENGTH

North Route 3 Priority 3

SECTION	ROUTE No.	DESCRIPTION
		Travel to Kilmarnock
1	KILMARNOCK	WOODHILL ROAD,ST MAURS CRESCENT,ASHDALE AVENUE,BLUEBELL DRIVE,HEATHER COURT,SHISKINE DR
	KILMARNOCK	AUCHENCAR DRIVE,CORDON RD,NACHRIE ROAD,JOHN WALKER DRIVE,TALISKER AVE,CARDHU CR,NEWLANDS DR
	KILMARNOCK	TOBERMORY DRIVE, DALMORE ROAD,GLENKINCHIE ROAD
2	KILMARNOCK	BRINGHAM ROAD,GLASSOCK ROAD,MUIREND ROAD,BURNFOOT PLACE,MORVEN AVENUE,ARDGOUR ROAD,
	KILMARNOCK	ARDBEG AVENUE,TITWOOD DRIVE,REDDING AVENUE,TODHILL AVENUE,RAITHBURN AVENUE,THORN TERRACE
	KILMARNOCK	KINGSWELL AVENUE,CROFTHEAD AVENUE,BRACKENHILL AVENUE,ORKNEY DRIVE,KIRKWALL PLACE,
	KILMARNOCK	STRONSAY PLACE,FARANSAY PLACE,AILSA PLACE,RONA PLACE,ERISKAY PLACE,IONA PLACE,CUTHBERT COURT
3	KILMARNOCK	SHETLAND DRIVE,ARRAN AVENUE,MANOR AVENUE,ROWALLAN DRIVE,GLENCRAIG DRIVE,MUIREND PLACE
	KILMARNOCK	MOSSIDE PLACE,LEVEN AVE,STAFFORD STREET,POTTERY PLACE,BATH STREET,MONTGOMERY STREET
	KILMARNOCK	BALMORAL ROAD,BURNS AVE,LANDSBOROUGH DRIVE,DUNOON AVE,ROTHSAY PLACE,DEANHILL LANE
	KILMARNOCK	GRAITHNOCK DR,McILVANNEY DR,McILVANNEY CR,ORCHARD ST,BLAIR ST,THOMSON ST,DANNY COFFEY AVE
	KILMARNOCK	NORTH CRAIG RD,HILL PARK DR,CAMPBELL TOWN DR,TOWNHOLM,HARRIET RD,HIGHFIELD AVE,CLAY CR,
	KILMARNOCK	ALEXANDER Mc LAREN GARDENS,THOMAS BAIRD GARDENS,JOHN KENNEDY PLACE,HILLHEAD SQ,
	KILMARNOCK	ARCHIBALD CRAIG PLACE,DE-WALDEN DRIVE,FORREST GROVE,FAILFORD PLACE,GROUGAR DRIVE,CASTLE DR
4	KILMARNOCK	JOHN BURTT PLACE,INVERCLOY PLACE,
	FENWICK	CREELSHAUGH ROAD,GLEBE TERRACE,KIRKTON PLACE,POLES ROAD, DUNLOP STREET,MURCHLAND AVENUE,
	FENWICK	BRAEHEAD ROAD,MAUNSHUEGH ROAD,HOLMES CRESCENT,GLENCRAIG TERRACE,RYSLAND DRIVE
	FENWICK	BLACKFAULDS DRIVE,SKERNIELAND ROAD,FOWLDS VIEW.FULTONS CRESCENT,BROOKFIELD GROVE
	U64	GAINHILL ROAD FROM MAIN STREET FENWICK TO B778
	U54	TANNACRIEF ROAD FROM B778 TO B751 NEAR MEIKLEWOOD
5	WATERSIDE	MILL WYND FROM A719 TO CUL DE SAC
	U47	LITTLERAWES ROAD FROM C33 TO C10
	U44	OXENSHAW ROAD FROM A719 TO C66
	U40	HARESHAWMOOR ROAD A719 WATERSIDE TO END
6	U41	RUSHAW ROAD FROM A719 MOSCOW TO END
	U42	HEMPHILL ROAD FROM A719 TO U41
	U15	ASSLOSS ROAD FROM GLASGOW ROAD TO U65

North Route 4 Priority 3

SECTION	ROUTE No.	DESCRIPTION
		Start Galston
1	GALSTON	AYR ROAD,GATESIDE ROAD,MILRIG CRESCENT,LOUDON AVENUE,LADYTON DRIVE,BOYD STREET,CHAPEL LANE
	GALSTON	BARRMILL ROAD,BLAIR STREET,DUKE STREET,BENTINCK STREET,BLAIR CRESCENT,SUTHERLAND TERRACE,
	GALSTON	CASTLEVIEW AVENUE, SORN PLACE, BURNAWN PLACE,
2	GALSTON	MARGARET AVE,MILLANDS ROAD,NEW ROAD,ANDREW LUNDIE PLACE,CESSNOCK PLACE,CLOCKSTON RD
	C103	B744 TO B7037
	C104	B7037 TO NEWMILNS
3	NEWMILNS	STONEYGATE ROAD,STRATHOME TERRACE,RIVERBANK STREET,SHIELDS ROAD,QUEENS CRESCENT,
	NEWMILNS	,MURE PL,IRVINE ROAD,LOUDON ROAD WEST,LAWRIE ST,
	NEWMILNS	GILFOOT,GIRVAN ST,
	NEWMILNS	BROWNS ROAD,BRAEHEAD ROAD,BURN ROAD, MILL CRESCENT,UNION STREET
4	DARVEL	DUBLIN ROAD,GLENBRIG, MURDOCH ROAD
	DARVEL	JAMESON ROAD (TOP PART),EAST & WEST DONNINGTON ST,WOODBURN CT,GILLILAND RD,LOUDOUN CT
	DARVEL	WEST EDITH STREET,FLEMING STREET,MUIR DRIVE,LINTMILL ROAD,BURNBANK STREET,MAIRS ROAD
	DARVEL	DRUMCLOG CRESCENT,GLEN CRESCENT,GREENBANK ROAD,GEORGE YOUNG DRIVE, ROXBURGH GARDENS
	DARVEL	DYKES COURT,LANFINE VIEW,MORTON PARK DRIVE,DALQUHARN ROAD,COUNTRESS STREET,TEMPLE STREET,
5	DARVEL	GREEN STREET,IRVINEBANK ROAD,ROBERTSON GARDENS,JOHN MORTON CRESCENT,CAUSEWAY ROAD
	U2	BRANSFIELD ROAD FROM DARVEL TO END
	U3	FOULPAPPLE FROM C133 JUNCTION TO DARVEL
	U4	LADYBROW ROAD PRIESTLAND TO LOUDONHILL
	U5	PASFORD AND YONDERCROFT ROAD FROM A71 TO BOUNDARY
	U8	BROOMHILL ROAD FROM DARVEL TO BOUNDARY
	U7	FROM A71 TO SOUTH LANRSHIRE BOUNDARY
	C135	ALLANTON PLAINS
	U9	WINDSHIELDS FROM U3 LITTLE GLEN TO U8 BROOMHILL
	U22	BURNFOOT ROAD FROM U3 TO END
	U30	EAST NEWTON ROAD FROM A719 TO U33
	U55	THREEPWOOD ROAD FROM B7037 TO U56
	U56	BOGEND AND MIDDLEFIELD ROAD FROM U1 TO B7037

North Route 5 Priority 3

SECTION	ROUTE No.	DESCRIPTION
1	KILMARNOCK	WILSON AVE,MELVILLE STREET,CAMERON DRIVE,BARCLAY DRIVE,FINDLAYSON DRIVE,LINDSAY DRIVE,
	KILMARNOCK	ANDERSON PLACE,DRUMMOND PLACE,BANNERMAN DRIVE,KERR ROAD,LOCH VIEW,RANKIN COURT,DEAN VIEW
2	KILMARNOCK	WILLIE ROSS,SINCLAIR COURT,HUNTLY PLACE,BAIRD PLACE,LESLIE PLACE,FORBES PLACE,DUNBAR DRIVE
	KILMARNOCK	KAY PARK TERRACE,KAY PARK CRESCENT,McLEAN DRIVE,McGREGOR DRIVE,McEWAN PLACE,McKINNON DRIVE
3	KILMARNOCK	McLEOD DRIVE,McLAREN PLACE,DUNURE DRIVE,GREENAN ROAD,WELLPARK GROVE,MACANDREW GARDENS
	KILMARNOCK	MILTON DRIVE,MILTON ROAD,MILTON AVE,OLIPHANT DRIVE,COTTER DRIVE,SOUTER DRIVE,MOSSGIEL AVE
4	KILMARNOCK	ELLISLAND DRIVE,BRAEHEAD COURT,BRAESIDE STREET,LOANHEAD STREET,ELMBANK DRIVE,GLEBE AVE
	KILMARNOCK	GLEBE ROAD,NEW MILL ROAD,GLENAPP QUADRANT,LINFERN AVE,SPARROW GARDENS,OSPREY DRIVE
4	KILMARNOCK	BUNTING PLACE,NURSERY GARDENS,GILMOUR STREET,ST ANDREWS STREET,NURSERY STREET,DOUGLAS STREET
	KILMARNOCK	WEST NETHERTON STREET,GLENFIELD PLACE.

North Route 6 Priority 3

SECTION	ROUTE No.	DESCRIPTION
		Travel to Kilmarnock
1	KILMARNOCK	PEACE STREET,STEVENSON STREET,GIBSON STREET,YORK PLACE,DAVID ORR STREET,CAIRN TERRACE
	KILMARNOCK	LENNOX CRESCENT,STIRLING AVE,WAVERLY AVE,ALMOND PLACE,ALDER PLACE,WARWICKHILL ROAD
	KILMARNOCK	BUSBIEHILL PLACE,CARMEL AVE,SANNOX ROAD,SOUTHOK ROAD,GLEN ORRIN AVENUE
	KILMARNOCK	GLEN FARRAR WAY,MOORFIELD AVENUE,WOODSIDE AVENUE,FAIRLIE AVENUE,HOLMES CR,STRATHLEA CR
2	KILMARNOCK	MOUNT PLACE,HAPERLAND DRIVE,ARROTHILL DRIVE,BLACKWOOD AVENUE,HOLMLEA DRIVE,SORN ROAD
	KILMARNOCK	McCLELLAND DRIVE,WALLACE STREET, HOWARD PARK DRIVE,MEWS LANE SOUTHOOK ROAD,
	KILMARNOCK	PORTER DRIVE,GAGIESTON DRIVE,SCOTT ROAD, ROWANHILL PLACE,ELLIS STREET,SEAFORD STREET
3	KILMARNOCK	,WESTMOOR CRESCENT,HOLMLANDS PLACE,JAMES SYM CRESCENT,
	KILMARNOCK	SMILLIE PLACE,LABURNUM ROAD,CHERRY ROAD,WALNUT ROAD,JASMINE ROAD,LAUREL PLACE,RUGBY ROAD
	KILMARNOCK	RUGBY CRESCENT,SPRINGHILL PLACE,CHARLES STREET,CHARLES STREET,CHARLES PLACE,HOWARD STREET
4	U35	FARDALEHILL ROAD FROM BONNYTON TO KNOCKINTIBER
	HURLFORD	WALDEN ROAD,MORRIS CRESCENT,KERSLAND CRESCENT ROXBURGH ROADS,BLAIR ROAD,BLAIR CRESCENT
	HURLFORD	LEVEN DRIVE,LOMOND AVENUE,CESSNOCK DRIVE,CESSNOCK AVE,KNOWEHEAD ROAD
	HURLFORD	BARWELL DRIVE,FURNACE COURT,PORTLAND COURT,PORTLAND BRAE,MARCHMOUNTCOURT,HOLYOAKE COURT
5	CROOKEDHOLM	SERIGHT SQUARE,SERIGHT CRESCENT,RALSTON DRIVE,STRUTHERS AVENUE
	U37	MILTON ROAD FROM KILMARNOCK TO A719
	U38	LANGLANDS ROAD FROM C33 DYKESCROFT TO U37 MILTON ROAD
	U34	FAIRYHILL ROAD FROM DUNDONALD ROAD TO HOLMES ROAD
	U36	GATESIDE ROAD FROM U37 TO A719
	C127	FROM HURLFORD TO A719

North Route 7 Priority 3

SECTION	ROUTE No.	DESCRIPTION
		Travel to Kilmarnock
1	KILMARNOCK	ARDLE AVENUE,LUCE AVENUE,GARNOCK ROAD,TWEED CRESCENT,LAWERS CRESCENT,CROMDALE ROAD
	KILMARNOCK	CAMPSIE ROAD DUMGOYNE ROAD,KINNOULL ROAD,GRAMPIAN ROAD,ESK ROAD,DEE AVENUE,NEVIS PLACE,
	KILMARNOCK	LOMOND ROAD,DUNGAVEL ROAD,BROOMHILL QUADRANT,TURNBERRY DRIVE,MOSSHEAD ROAD,
	KILMARNOCK	CRAIGIE ROAD,GATESIDE PL,TREESBANK RD,LAINSHAW AVE,
2	KILMARNOCK	PEATLAND QUADRANT,BRIDGEHOUSEHILL ROAD,COMMONHEAD ROAD,SHORTLEES CRESCENT
	KILMARNOCK	BURNPARK ROAD,EARLSTON AVENUE,SUNNYSIDE ROAD,TOWNEND ROAD,MARCHDYKE CRESCENT,STAFFLER DRIVE
	KILMARNOCK	HURLFORD SERVICE ROAD,STRATHY PLACE,CESSNOCK PLACE
3	KILMARNOCK	INCHGOTRICK ROAD,SCARGIE ROAD,SIMONS CRESCENT,KELBURN CRES,LOCHGREEN PL,CRAIGIE AVENUE,
	KILMARNOCK	KEN ROAD,SPEY AVENUE,CAIRNGORM ROAD,LEADHILLS ROAD,PENTLAND ROAD,LAWERS ROAD,LOCHNAGER ROAD,
	KILMARNOCK	WITHKNOWE AVENUE,UNDERWOOD PLACE, BALGRAY AVENUE,LANGSIDE AVENUE,KINLOCH RD,DEVERON RD
4	KILMARNOCK	JEFFREY STREET, WALLACEHILL ROAD,MAXHOLM ROAD,BARNWELL ROAD,GRANGER ROAD,PICKEN STREET
	SOUTHCRAIGS	STEWARTON DRIVE,WALLACETOWN AVENUE,CROSS PLACE,EDAY CRESCENT,BURNS CRESCENT
	SOUTHCRAIGS	UIST LANE,STORNAWAY DR,PORTREE AVE,BURRA DR,WESTRAY DR,DUNSKY RD,DARVEL AVE,NEWMILNS GARDENS
	SOUTHCRAIGS	WESTFIELD ROAD,COLONSAY PLACE,WESTRAY,BOYDSTON WAY,GALSTON PLACE,PRIESLAND CLOSE,
5	SOUTHCRAIGS	NEWMILNS GARDENS,FAIR ISLE PLACE,LERWICK PLACE
	CRAIGHALL	CRAIGHALL BANK,CRAIGHALL CRESENT,CRAIGHALL ROAD
	U50	MOSSIDE ROAD FROM B751 TO B7038
	U59	EAST HILLHOUSE ROAD FROM A77 TO C119
	C119	FROM SOUTH AYRSHIRE BOUNDARY TO C53 FIVEWAYS
	U60	DITTON ROAD FROM C120 TO BOUNDARY
5	U63	WHEATRIGGS ROAD FROM A76 TO A77

South Route 1 Priority 3

SECTION	ROUTE No.	DESCRIPTION							
		Travel from Depot to							
1	C123	FROM B730 JUNCTION TO C124 MOAT TOLL							
	OCHILTREE	KNOWE VIEW , GLEBE CRESCENT, POOLE AVE, STEWART AVE, DOUGLAS BROWN AVE, proceed to Catrine							
	CATRINE	BALLOCHMYLE QUADRANT, FOURFIELDS, ALLAN DRIVE, HILLSIDE, SOMMERVILLE STREET, SHAWLANDS STREET							
2	CATRINE	MONTGOMERIE STREET, BLACKWOOD AVE, GAMES HALL, ST CUTHBERTS STREET,, MILL SQUARE							
	CATRINE	BRIDGE LANE, FORD STREET, BALLOCHMYLE VIEW, GORDON STREET, AYR STREET,							
	SORN	FIR PARK, ANDERSON DRIVE, WOODLANDS ROAD							
3	U76	BLACKSIDE FROM DYKENEUK TO END OF ROAD							
	U722	DYKENEUK FROM B7037 TO B743 SORN							
	U79	BROCKLAR FROM DYKENEUK TO B743							
	MAUCHLINE	, COWGATE, CARRICK VIEW,							
	MAUCHLINE	BEECHWOOD ROAD, SUNNYSIDE CRESCENT, HUGHFIELD ROAD, LOCH ROAD, CASTLE STREET, THE KNOWE							
4	MAUCHLINE	MANSEFIELD ROAD, LOANHILL AVE, MOSSGIEL AVE, ALEXANDER TERRACE, AULD AVE, BALLOCHMYLE AVE,							
	MAUCHLINE	LOCHLEA AVE, GREGORY STREET, FERNLEA AVE, SOUTHFIELD AVE, EAST PARK AVE, NETHER WALK, ARRAN VIEW,							
	MAUCHLINE	Clarinda Cres, Nether Walk, East park Ave, Netherplace Quadrant							
	MAUCHLINE	CONNEL CRES, WHITEFORD PLACE, GRASSMILLEES WAY							
	MAUCHLINE	CONNEL CRESCENT, WESTPARK AVENUE DONALDSTON CRESCENT, BEECHGROVE ROAD proceed to Hilltop							
	U732	HAUGH ROAD FROM STATION ROAD MAUCHLINE TO C50 JUNCTION travel on B7036 to Mauchline Road Ochiltree							
5	U742	MOSSIDE ROAD FROM HAUGH ROAD TO B743							
	U735	OLD HOWFORD FROM A76 CATRINE TO A76 MAUCHLINE							
	U712	CLEWS ROAD FROM HAUGH ROAD TO OLD HOWFORD ROAD							
	CUMNOCK	BANK AVE, BANK GLEN, KEIR HARDIE HILL, JOHN BAIRD ST, ELIZABETH CR, LINK RD,							
6	CUMNOCK	WYLIE CR, McCALL AVE, MITCHIE ST, HERDSTON PL, GEMMILL AVE, LATT A CR, SHANKSTON CR,							
	CUMNOCK	MARKET LANE, GREENHOLM ROAD, RICHMOND TERRACE, GREY ST, EMRYS AVE							
	CUMNOCK	GLENLAMONT, GLENCARIN, GLENRAMSKILL AVE, McQUEEN AVE, HILLSIDE VIEW, HORSECEUGH CLOSE.							

South Route 2 Priority 3

SECTION	ROUTE No.	DESCRIPTION							
		Travel from Depot to							
	AUCHINLECK	CAMERON DRIVE, BALLOCHMYLE AVENUE, GLENSHAMROCK DRIVE							
	AUCHINLECK	BEECHWOOD AVE, BOSWELL DRIVE, HIGHHOUSE VIEW, RUNNELS VIEW, PENNYLANDS VIEW, SCHOOL ROAD							
1	AUCHINLECK	LAMBFAIR GARDENS, STONER CRESCENT, HEATHFIELD ROAD, DARNCONNER AVE, AIRD AVE, PEDEN DRIVE							
	AUCHINLECK	QUARRYKNOWE, MILNE AVE, JUDGE AVE, TALBOT DIVE, MILNE AVE proceed to Muirkirk							
	MUIRKIRK	THE STYLE, FURNACE RD, COLTHART DR, MILLAR ROAD(PART), LAPRAIK DR							
	MUIRKIRK	HAREWOOD AVE, SMALLBURN DRIVE, SHAWKNOWE AVE, GARPEL AVE, LOVEDALE CRESCENT,							
2	MUIRKIRK	MEANLOUR SDRIVE, HARESHAW CRESCENT, PARK AVE, MIDDLEFIELD DRIVE, GARRONHILL travel on B743 to							
	U724	GARPEL ROAD. FROM B743 TO END OF ROAD							
	U731	GREENOCK WATER. FROM B743 TO A70 travel back on B743 to Sorn							
	U749	SMIDDYSHAW. FROM B743 SORN TO B713 proceed to C65							
3	U748	HEILER. FROM C65 TO END OF ROAD turn and proceed to C65							
	U733	HIGH LOGAN. FROM C65 TO B705 proceed along B705 to							
	U730	GLENSHAMROCK. FROM B705 TO C23							
	CUMNOCK	HOYLE CR, LORIMER CR, HUNTERS WAY, BANEFIELD AVE, OAKBANK DR(PART), BROOMFIELD AVE,							
4	CUMNOCK	TERRINGZEAN VIEW, ROSEBURN DRIVE, KYLE COURT, HOLM, HOLMSIDE							

South Route 3 Priority 3

SECTION	ROUTE No.	DESCRIPTION
		Travel from Depot to Drongan
1	DRONGAN	CARSTON AVE,MAINSFORD AVE,HANNAHSTON AVE(PART),GLENCRAIG ST(PART),CAIRNSTON AVE,
	DRONGAN	LOMOND VIEW,LOMOND CR,CRAUFURD DR,MARGARET DRAIN CR,FARRELL CR,WATSON TERR (PART)
	DRONGAN	TRYSTING TERRACE,BETTOCK ROAD,HODGE CRESCENT,AILSA CRAIG VIEW,CORRIE PLACE,TRUESDALE CR,
	DRONGAN	LADIES WALK AVENUE, GARROWHILL DRIVE,SCHAW AVENUE, COYLE AVE, STAIR DRIVE,BONNYTON AVENUE.
	U741	MILLMANNOCH. WATSON TERRACE DRONGAN TO SOUTH AYRSHIRE BOUNDARY to
2	U740	FROM SOUTH AYRSHIRE BOUNDARY(3T WEIGHT LIMIT BRIDGE) to LADIES WALK AVENUE DRONGAN to Dalrymple
	U738	MARTNAHAM. FROM A713 HOLLYBUSH TO C21 DRONGAN
3	DALRYMPLE	MERKLAND DRIVE,ROBERTSON PLACE,BARBIESTON TERRACE,SKELDON DRIVE,SKELDON CRESCENT,
	DALRYMPLE	PORTLAND ROAD,BIRCH AVENUE,SEATH DRIVE,CHURCH STREET,GLEBE AVENU,RIVERSIDE TERRACE,
	DALRYMPLE	PRIMPTON AVENUE,PURCLEWAN COURT,DOONVALE AVENUE,MORTON DRIVE,FULTON PLACE.
	U756	SKELDON MILL FROM B7034 TO END
	U757	GLENAMMER. FROM B7034 TO B742
4	U758	GLASTRON.FROM B7034 TO SKELDON BRIDGE
	U745	PERCLEWAN MILL. FROM B742 TO DUSTYHALL A713 travel back to B7046 Sinclairston
	U74	BARDARROCH. B7046 SINCLAIRSTON TO A70 KILLOCH travel back to Depot
	U717	CREOCH FROM A70 TO C123
	U714	CAWHILLAN FROM C123 TO C49
	C2	FROM B730 TO SOUTH AYRSHIRE BOUNDARY
	C116	FROM SOUTH AYRSHIRE BOUNDARY TO B730

South Route 4 Priority 3

SECTION	ROUTE No.	DESCRIPTION
		Travel from Depot to Patna
1	PATNA	DALLOWIE RD,HILLSIDE,STEWART PLACE,
	PATNA	CARNSHALLOCH AVENUE (PART),HILLSIDE (PART) DOONBANK CRESCENT,
	PATNA	DOWNIESTON PLACE,DRUMBUIE DRIVE,KILMEIN AVENUE,BARNSHEEN AVENUE,MEIKLEHOLM DRIVE,
	PATNA	NETHERHILL CRESCENT,DUNASKIN VIEW,KEIRS CRESCENT proceed on A713 to Dalmellington
2	DALMEL/TON	ARMOUR WYND,BURNTON VILLAGE,C91 TO CRAIGMARK INN,KNOWEHEAD,BRADDON AVE,
	DALMEL/TON	DALTON AVENUE,MELLING TERRACE,CROFT STREET,WATERSIDE STREET,
	BELLSBANK	RECAWR AVENUE,HILLCREST,MACATERICK DRIVE,,SHALLOCH PLACE
	U759	LOCH DOON. FROM A713 TO END OF ROAD turn and proceed to
3	U760	DALCAIRNEY. FROM B741 TO END OF ROAD

South Route 5 Priority 3

SECTION	ROUTE No.	DESCRIPTION
		Travel from Depot to New Cumnock
1	NEW CUMNOCK	LOCH VIEW,POLQUHEYS ROAD,MANSEFIELD HEIGHTS,CASTLEHILL,MILLAR ROAD,GLEBE STREET,
	NEW CUMNOCK	NITHSDALE AVENUE,WESTLANDS DRIVE,MASON AVENUE,MOUNTHOPE TERRACE,LOCHBROWN TERRACE,
	NEW CUMNOCK	MILRAY AVENUE,ARDNITH AVENUE,WESTPARK DRIVE,HIGHPARK AVENUE (PART),CAIRNHILL PLACE,
	NEW CUMNOCK	HAMILTON DRIVE,GLENAFTON DRIVE,STELLHEAD AVENUE,
2	U743	NEWFIELD. FROM C36 TO B7046 AT GARLAFF turn left on B7046
	U746	PLUCK ROAD FROM B7046 TO C97 SKARES STATION
	U711	CAIRN BRAE. FROM U743 NEWFIELD TO CAPONACRE CUMNOCK return to Depot
	U747	POLQUAP ROAD. FROM A76 TO C36
3	LOGAN	HOLMHEAD CRES,DIXON AVE,GLENMUIR CR,GLEN AVE,BAILLIE DR,
	CUMNOCK	CAMERON CR,CARSCAILLOCH AVE,LAMONT CR,NETHERTHIRD PLACE,CRAIGENS PLACE,PENDERS WYND
	CUMNOCK	PHILLIPS WYND,CAPONACRE(PART)

South Route (Mauchline Area) Priority 3

SECTION	ROUTE No.	DESCRIPTION								
	C51	MAUCHLINE PIT.FROM A76 TO FRIENDLESS HEAD U7223								
1	U723	FRIENDLESSHEAD. FROM B774 TO B7037								
	C76	FROM B744 TO B7037								
	U19	FROM C76 TO B7037								
	U734	AUCHMILLAN. FROM HILLHEAD TO B7037								
2	U73	DITTON. FROM HILLHEAD U734 TO FRIENDLESSHEAD U723								
	U744	OXENSHAW. FROM AUCHMILLAN TO B743								
	U707	BOGHEAD FROM FRIENDLESSHEAD TO C76								
	U705	BARNEIGHT &KILLOCH FROM C51 TO BOGHEAD								
3	U718	CROFTHEAD ROAD FROM B705 CATRINE TO C137								
	U732	HAUGH&SYKE FROM MAUCHLINE TO A76								
	U714	CAWHILLAN FROM C49 TO C124								
	U717	CREOCH ROAD FROM C123 TO A70 KILLOCH								
4	U734	HILLHEAD. FROM A76 HILLTOP TO EAST HILLHEAD FARM								
	U739	HILLTOP. FROM JUNCTION OF EAST HILLHEAD TO B743 travel on B743 to								
	U734	HILLHEAD. FROM B743 TO B705 CATRINE								
	C137	FROM B705 JUNCTION TO B743 JUNCTION SORN turn left travel on B743 to								
5	C86	FROM B743 TO B7037 turn right to								
	U72	AUCHENCLOIGH FROM B7037 TO TURNING HEAD								

Appendix 8 Priority 1 Carriageway Gritting Routes - South Ayrshire Council

Meadowhead Depot in Coylton operates seven Priority 1 carriageway gritting routes, mainly but not exclusively, confined to the north of the Council area; and includes the major towns of Ayr, Prestwick and Troon.

Grangestone Depot in Girvan operates three Priority 1 carriageway gritting routes, mainly in the south of the Council area; and includes the major towns of Maybole and Girvan.

Method

Acting on advice received from the Council's weather service provider, Priority 1 routes will receive precautionary treatment prior to the onset of frost / ice.

Included within the Priority 1 routes are all A class and B class roads and strategic C class and unclassified roads.

Roads which meet the Council's criteria of precautionary treatment applied to a minimum of one road servicing council schools, and emergency service depots, plus roads servicing high concentrations of employment, commercial outlets and densely populated residential areas and other roads of strategic importance are also included.

The exception to this arrangement is when the Council's weather service provider advises that there is no risk of hazardous winter road conditions in any of the four climatic domains. In this event altered routes which exclude roads in a particular climatic domain are used.

A small number of roads within residential areas may be partly treated in order to optimise a predetermined routing system.

Meadowhead Depot - Priority 1 Carriageway Gritting Route 1			South Ayrshire Council
Town /Village	Road Number	Description	
-	B742	From Meadowhead Roads Depot to A70 Hillhead Coylton	
Coylton	A70	Hillhead	
		Joppa	
		Ayr Road	
-		From Ayr Road Coylton to A77 Holmston Roundabout	
Ayr		Holmston Road	
		Station Roundabout	
		Station Bridge Road	
		Parkhouse Street	
		Burns Statue Square	
		A79	Station Road
	John Street		
	Allison Street		
	New Road		
	Prestwick Road		
Prestwick	Ayr Road		
	Main Street		
	The Cross		
	Monkton Road (The Cross to Airport Loop Road)		
	Airport Loop Road		
-	B746	From U98 to Main Street Loans	
Loans	A759	Main Street Loans	
		From Main Street Loans to A78 Auchengate Interchange	
-		From A78 Auchengate Interchange to East Ayrshire Council boundary at Old Rome Bridge Gatehead	
Gatehead		Milton View (from Old Rome Bridge to Railway Level Crossing)*	
		Main Road (from Railway Level Crossing to Cochrane Inn)*	
-	B750	From A759 at Boghead to Kilmarnock Road Dundonald	
Dundonald		Kilmarnock Road	
	-	Kilnford Drive (From Drybridge Road to A759)	
		Castle Drive	
		Newfield Drive (From Dundonald Primary School to Castle Drive only)	
		B730	From A759 to North Ayrshire Council boundary at south of Railway Bridge Drybridge

* Treated on behalf of Ayrshire Road Alliance (East Ayrshire Council area)

Meadowhead Depot - Priority 1 Carriageway Gritting Route 1 (continued) South Ayrshire Council		
Town /Village	Road Number	Description
Drybridge	B730	Main Street (from South Ayrshire Council boundary south of Railway Bridge to Shewalton Road Drybridge)*
Dundonald		Drybridge Road
		Main Street
-		From Main Street Dundonald to A77 at Bogend Toll
		From A77 at Bogend Toll to A719 at Rabbit Wood
		From A719 at Fail Toll to Croft Street Tarbolton
Tarbolton		Croft Street
		Cunningham Street
		Montgomerie Street
		From Montgomerie Street Tarbolton to B743 near Carngillan
-	C92	From B730 near Caldrongill to C8 near Plewlands
	C8	From A719 near Adamhill to C64 west of Main Street Craigie
	U80	From B730 near Laigh Langside to C8 north of High Langside
	B743	From B730 at Carngillan to B744 at Weston Brae Annbank
		Weston Brae
Annbank	B744	Brown's Crescent (excluding cul-de-sac between No.2 and No.31)
		Weston Avenue
		Goodwin Drive
	-	Braeside
		Whitehill Crescent
-	B744	From Weston Avenue Annbank to A70 at Belston

* Treated on behalf of North Ayrshire Council under cross boundary arrangements.

Meadowhead Depot - Priority 1 Carriageway Gritting Route 2 South Ayrshire Council		
Town / Village	Road Number	Description
Ayr	B743	Heathfield Road
	-	Low Road
	A719	High Road
		Main Road
		Whitletts Road
		King Street (from Whitletts Road to John Street only)
Prestwick	-	Hunter's Avenue
		Doon Avenue
		Waterloo Road (From Doon Avenue to Ayr Road)
	B743	From A77 Whitletts Roundabout to C150 St Quivox Road
-	C150	St Quivox Road (from B743 to A77)
	B743	From C150 St Quivox Road to B742 Sandyford Road Mossblown
Mossblown		Sandyford Road
-	B742	From Sandyford Road Mossblown to A77 at Sandyford Toll roundabout
	A719	From B742 east of Sandyford Toll roundabout across East Ayrshire Council boundary to A76 Crossroads roundabout
	B744	From A76 at Crosshands across South Ayrshire Council boundary to Garden Street Tarbolton
		Garden Street
Tarbolton	C17	Westport (from Cunningham Street to Gallowhill Avenue)
	-	Gallowhill Avenue
		Langlands Drive
		Princes Street
		Back Street
		Sandgate Street
		James Street
-	B744	From Montgomerie Street Tarbolton to B743 south of Walston Farm
	B743	From B744 at Carngillan across East Ayrshire Council boundary to Ayr Road Mauchline
Mauchline		Ayr Road*
-		Loudoun Street*
-		From B744 to Mauchline Road Mossblown
Mossblown		Mauchline Road
-	B742	Annbank Road from B743 Mauchline Road to B744 at Weston Smithy

* Treated on behalf of Ayrshire Roads Alliance (East Ayrshire Council area)

Meadowhead Depot - Priority 1 Carriageway Gritting Route 3 South Ayrshire Council

Town / Village	Road Number	Description
Ayr	C39	Corton Road (from A713 to A77)
-	A719	Dunure Road (from Longhill Avenue Ayr southwards to C12 at Dunure Mains Farm)
Dunure	C12	Castle Road
		Station Road
-	A719	From C12 at Dunure Mains Farm to B7023 at Pennyglen
		From B7023 at Pennyglen to Kirkoswald Road Maidens
		Kirkoswald Road
Maidens	-	Shanter Road (from Kirkoswald Road to Maidens Primary School entrance only)
		Turnberry Road
-	A719	From Turnberry Road Maidens to Maidens Road Turnberry
Turnberry		Maidens Road
-		From A77 at Bridgemill Girvan to Main Street Dailly
Dailly		Main Street
		Linfen Road
-		From Linfen Road Dailly to Main Street Straiton
		Main Street
Straiton		Newton Stewart Road
-	C1	Straiton - Newton Stewart Road (from Straiton to Tarlaw Bridge)
Straiton	B741	Dalmellington Road (from Main Street to No.34 only)
		Kirkmichael Road
-	B7045	From Kirkmichael Road Straiton to Straiton Road Kirkmichael
		Straiton Road
		Bolestyle Road (from Straiton Road to Bolestyle Crescent (north junction only))
		Bolestyle Crescent
		Woodside Avenue (from Bolestyle Crescent to Kirkmichael Primary School entrance only)
-	B7045	From Straiton Road Kirkmichael to A77 at Hogg's Corner
Minishant	-	Mure Place
		Merrick Place (to Minishant Primary School only)
Ayr	A79	Maybole Road (slip lane off A77 only)

Meadowhead Depot - Priority 1 Carriageway Gritting Route 4 South Ayrshire Council

Town / Village	Road Number	Description
Ayr	A713	Dalmellington Road
		Castlehill Road
	-	Ashgrove Street (from Castlehill Road to Dongola Road only)
		Dongola Road (from Ashgrove Street to Holmston Road only)
	A70	Killoch Place
	-	Alloway Street
		High Street
		Boswell Park (from Douglas Street to Carrick Street only)
		Carrick Street
		Fullarton Street (from Carrick Street to Douglas Street only)
		Barns Street
		Wellington Square
		Bath Place
		Pavilion Road
		Esplanade (from Pavilion Road to Bath Place only)
		Dalblair Road
		Kyle Street
		Smith Street
		Mill Street
	A70	Miller Road
	A719	Racecourse Road
		Doonfoot Road
		Dunure Road (from Racecourse Road to Longhill Avenue only)
	-	Longhill Avenue (from Dunure Road to Cairnsmore Drive only)
		Corserine Road (from Cairnsmore Drive to Newark Avenue only)
		Newark Avenue (from Corserine Road to Crossburn only)
		Crossburn
		Browncarrick Drive (from Crossburn to Dunure Road only)
		Scaur O'Doon Road (from Dunure Road to Abbots Way only)
		Abbots Way (from Scaur O'Doon Road to Greenan Way only)
		Greenan Way
		Greenan Road (from Greenan Way to Earls Way only)
		Earls Way
		Longhill Avenue (from Cairnsmore Drive to High Maybole Road)
		The Loaning
		Lauchlanglen Road
		Finlas Avenue
		Carcluie Crescent
		Shielhill
		Braden Drive
		Bathurst Drive
		Merkland Road
		Kerspark (from Merkland Road to Maybole Road only)
		Kincaidston Drive

Meadowhead Depot - Priority 1 Carriageway Gritting Route 4 (continued) South Ayrshire Council

Town / Village	Road Number	Description
Ayr	-	Snowdrop Square
		Hillfoot Road (from Holmston Road to Holmston Drive)
		Holmston Drive (from Hillfoot Road to Caledonia Road)
		Caledonia Road (from Holmston Drive to Armour Drive)
		Armour Drive
		Glencairn Road (from Armour Drive to Holmston Drive)
		Holmston Drive (from Glencairn Road to Caledonia Road)
		Hillfoot Road (from Holmston Drive to Dalmellington Road)
		Belmont Road
	B7024	Monument Road
		Alloway
	-	Doonholm Road (from Murdoch's Lone to Alloway)
		Greenfield Avenue
		Cunning Park Drive
		Gearholm Road
		Racecourse View
		Corsehill Road
		Midton Road (from Carrick Road to Ronaldshaw Park)
		Ronaldshaw Park
		Blackburn Road
		Blackburn Drive (from Blackburn Road to Seafield Road)
		Seafield Road
		Lochlea Drive
		Forehill Road (from Lochlea Drive to Hillfoot Road)
		Shavin Brae (from Hillfoot Road to Crofthead Road)
		Crofthead Road
		Rowan Crescent (from Crofthead Road to Pine Brae)
Coylton	-	Barclaugh Drive
		Woodhead Road (from Barclaugh Drive to Drumcoyle Drive)
		Drumcoyle Drive (from Woodhead Road to No.5)
		The Beeches (from Joppa to Broadwood)
		Broadwood
		Highpark Road
		St Brides Way
		Garvine Road
		Laighpark Road (from Garvine Road to Ayr Road)

Meadowhead Depot – Priority 1 Carriageway Gritting Route 5 South Ayrshire Council

Town / Village	Road Number	Description
-	B746	From A78 Loans off slip road to U98 Corraith Road
	U98	From B746 to U99
	U99	From U98 to Townend Road Symington
Symington	U99	Townend Road
		Main Street
	-	Symington Road North (from Main Street to bus turning circle)
		Bus turning circle at Symington Road North
	C39	Symington Road South (from Main Street to access road to Stockbridge Farm)
	-	Brewlands Road
		Mount Avenue (from Brewlands Road to Lawhill Road only)
		Lawhill Road
		Brewlands Crescent (from Lawhill Road to Brewlands Road only)
-	C39	From Brewlands Road Symington to B730 at Coodham
	B751	From B730 at Coodham to A759 at Old Rome
	C128	Harperland Road (from A759 to B730
	C32	Old Loans Road (from B730 Main Street Dundonald to A759 Main Street Loan)
Troon	-	Central Avenue
		North Drive (from Central Avenue to Buchan Road only)
		Buchan Road (from North Drive to Scott Crescent)
		Burns Road (from Buchan Road to Scott Crescent only)
		Scott Crescent
		Deveron Road
		Staffin Road (from Deveron Road to Garry Place only)
		Garry Place (from Staffin Road to Sark Drive only)
		Sark Drive
		Euchan Place
	B746	Kilmarnock Road
		Beach Road
	-	Burnfoot Avenue
		Kyle Drive
		Walker Avenue
		Muir Drive
		Barassiebank Lane
	B746	North Shore Road
	-	Barassie Street
		Burnside Place
		St Meddans Street (from South Beach to Barassie Street only)
		Church Street
		Bentinck Drive (from St Meddans Street to Yorke Road only)
		Victoria Drive (form Bentinck Drive to Golf Crescent only)
		Golf Crescent
		Yorke Road (from Bentinck Drive to Fullarton Drive only)

Meadowhead Depot - Priority 1 Carriageway Gritting Route 5 (Continued) South Ayrshire Council

Town / Village	Road Number	Description
Troon	-	Harling Drive
-	B746	From A759 Main Street Loans to U98 Corraith Road
Prestwick	-	Monkton Road (from Shawfarm Roundabout to Welsh Road)
		Shawfarm Road (from A79 to Marsmount Road)
		Marsmount Road
		Monument Crescent (from Marsmount Road to Shaw Road)
		Shaw Road (from Monument Crescent to Shawfarm Road)
		Shaw Road (from Shawfarm Road to Sherwood Road)
		Sherwood Road (from Shaw Road to Outdale Avenue)
		Outdale Avenue
		Marchburn Avenue
		Indale Avenue
		Outdale Avenue
		Briarhill Road
		Crofthead Road
		Alexandra Avenue
		Caerlaverock Road
		Sandfield Road
		Bellevue Road (from Sandfield Road to Adamton Road North)
		Biggart Road
		East Road (from Biggart Road to St Quivox Road)
		St Quivox Road
		Adamton Road North
		Adamton Road South (from Biggart Road to Auchencruive Avenue)
		Auchencruive Avenue
		St Andrew's Avenue (from Auchencruive Avenue to Biggart Road)
		East Road (from Biggart Road to Heathfield Road)
		Hunter's Avenue
		Afton Avenue
		Adamton Road South (from Afton Avenue to Auchencruive Avenue)
		Bellevue Road (from Sandfield Road to Main Street)
		Crandleyhill Road
		Nursery Avenue
		Kirkhill Crescent
Ayr	-	Hunters Avenue
		Northfield Avenue
		St Georges Avenue
		McCalls Avenue
		Walker Road

Meadowhead Depot - Priority 1 Carriageway Gritting Route 6 South Ayrshire Council		
Town / Village	Road Number	Description
-	B742	From Meadowhead Roads Depot to B744 at Weston Brae
Tarbolton	B744	Burns Street
	C17	Westport
-		From Westport Tarbolton to A719 near Torcross
Ayr	-	Maryfield Road
		Annpit Road (from Maryfield Road to Seaforth Road)
		Viewfield Road (from New Road to Russell Drive)
		Russell Drive
	B747	Craigie Road
	-	Craigie Way
		Hayhill
		Mainholm Road
		Low Road (from High Road to James Campbell Avenue)
		James Campbell Avenue
		Glenmuir Road
		Sloan Street (from Glenmuir Road to Ferguson Street)
		Ferguson Street (from Sloan Street to Galloway Avenue)
		Galloway Avenue
		Waggon Road
		York Street
		North Harbour Street
		Chalmers Road
		Belmont Avenue
		Fenwickland Avenue
		Peggieshill Road
		Annfield Glen Road
		Burnbank Road
-	U116	University Hospital Ayr Access Road
Coylton	-	Carbieston Avenue (from A70 to Lorne Terrace only)
-	B730	From Stair Inn to B743 at Carngillan
Mossblown	-	Acron Avenue
		Drumley Drive
		Station Road (from Annbank Road to Mossgreen Place)
		Mossgreen Place
		Afton Avenue
		Church Drive

Meadowhead Depot - Priority 1 Carriageway Gritting Route 7 South Ayrshire Council

Town / Village	Road Number	Description
-	A713	From B742 to A77 Bankfield roundabout
Ayr	A79	Maybole Road
		St Leonards Road
		Carrick Road
		Beresford Terrace
		Killoch Place (from Beresford Terrace to Miller Road only)
	A70	Miller Road
	A719	Alloway Place
		Wellington Place
		Fort Street
	C146	South Harbour Street (from Fort Street to South Beach Road)
	-	South Beach Road
	A719	South Harbour Street (from Fort Street to New Bridge Street)
		New Bridge Street
		Sandgate
	-	Fullarton Street
		Douglas Street
		Boswell Park (from Douglas Street to Sandgate only)
		Main Street (from King Street to Waggon Road only)
		New Road (bus corridor only)
-	B739	From A719 to Tarbolton Road Monkton
Monkton		Tarbolton Road
		Baird Road
		Kilmarnock Road (from Baird Road to Main Street)
-	C15	Main Street
	C1	From Main Street Monkton to A78 Monktonhead roundabout
Monkton	C1	From A77 Dutch House roundabout to Kilmarnock Road Monkton
	C1	Kilmarnock Road (From 30 mph signs to Baird Road)
Troon	B739	Station Road
	B749	Monktonhill Road
	C52	Southwood Road
	B749	Craigend Road
		South Beach
		Ayr Street
	-	Templehill
		Link Road to Harbour Road
	B746	Harbour Road
		Port Ranald Drive
	-	Jubilee Road
	A759	Portland Street
		Dundonald Road
Loans		Troon Road
-	B730	From A77 northbound off slip road to B730 roundabout at Coodham

Meadowhead Depot - Priority 1 Carriageway Gritting Route 7 (continued)		
Town / Village	Road Number	Description
-	C39	Symington Road South (from A77 southbound off slip road via overbridge to access road to Stockbridge Farm)
	C74	From A70 to B742
	U77	From B742 to Hole Road Coylton
Coylton	-	Hole Road

Grangestone Depot - Priority 1 Carriageway Gritting Route 1 South Ayrshire Council

Town / Village	Road Number	Description
Girvan	-	Ladywell Avenue
-	A714	From A77 Shalloch Park Roundabout Girvan to U52 Muck Road Pinwherry
	U52	From A714 to Pinwherry Community Centre
	A714	From U52 Muck Road to C72 Gowlands Terrace Barrhill
Barrhill	C72	Gowlands Terrace Barrhill
-		From Gowlands Terrace Barrhill to Barrhill Railway Station
Barrhill	A714	Main Street
-		From Main Street Barrhill to Dumfries and Galloway Council boundary at Wheeb Bridge
		B7027
Girvan	B7035	Coalpots Road (from A77 Shalloch Park roundabout to Piedmont Road)
	-	Piedmont Road (from Coalpots Road to Mote Hill Road)
		Mote Hill Road
		South Park Avenue (from Mote Hill Road to Wreck Road)
		Wreck Road
		Piedmont Road (from Dalrymple Street to Mote Hill Road)
	B7035	Coalpots Road (from Piedmont Road to South Park Avenue)
	-	South Park Avenue (from Coalpots Road to Mote Hill Road)
		Victory Park Road (from South Park Road to Wesley Road)
		Wesley Road
	B7035	Coalpots Road (from South Park Avenue to The Avenue)
	-	The Avenue
	B7022	Church Square
		Hamilton Street
		Montgomerie Street
	B7035	Coalpots Road (from The Avenue to B734 at Brae Toll)
	-	Bridge Street (from A77 to Newton Kennedy Bridge)
		Newton Kennedy
		Newton Place
		Golf Course Road (Newton Place to A77)

Grangestone Depot - Priority 1 Carriageway Gritting Route 2 South Ayrshire Council		
Town / Village	Road Number	Description
-	B734	From A714 at Hallowchapel to Main Street Colmonell
Colmonell		Main Street
		Rowantree Street
-		From Rowantree Street Colmonell to C121 at Liggetcheek
	C121	From B734 at Liggetcheek to A77 near Bennane
	B734	From A77 at Redburn House to C121 at Liggetcheek
	C59	From B734 at Knockdollar to Mains Road Ballantrae
		Mains Road
Ballantrae	-	The Vennel
		Foreland (from The Vennel to Shore Road)
		Shore Road
-	C45	From A77 south of Ballantrae Bridge to Craigneil Road Colmonell
Colnomell		Craigneil Road
	-	Haddows Row
Kirkhill Crescent		
-	C81	From B734 at Jubilee Bridge to A713 north of Daljarrock Bridge
	B734	From A713 at Pinmore Bridge to Stinchar Road Barr
Barr	-	Stinchar Road
		Changue Road (from Glenginnet Road to Barr Primary School)
	U66	Glenginnet Road (from Stinchar Road to No.85)
		From Glenginnet Road Barr to U27 at South Balloch
	B734	From Stinchar Road Barr to B7035 at Old Dailly
	B7035	From B734 at Old Dailly to B741 Linfern Road Dailly
Dailly	C151	Bridge Street
		Woodside
	C30	From B7035 at Lovestone to B734 at Penkill
	B734	From B7035 at Old Dailly to A77 at Bridge Mill Roundabout Girvan

Grangestone Depot - Priority 1 Carriageway Gritting Route 3 South Ayrshire Council		
Town / Village	Road Number	Description
-	C29	From B741 at Lochmodie Bridge to Dailly Road Maybole
Maybole		Dailly Road
	-	Ladywell Road
		Society Street
		Abbot Street
		Kirkland Street
		Redbrae
		Cargill Road
		Cargill Avenue
		Kilzenie View
		Elms Drive (from Cargill Avenue to Elms Crescent)
		Elms Crescent
		Ashgrove (excluding cul-de-sac between No.16 and No.18)
		Ashgrove Avenue
		Gardenrose Path (from Cargill Road to Fineview Place)
		Minnoch Crescent
		Kildoon Drive (excluding cul-de-sacs)
		Kincraig Avenue
		Queen's Terrace
		Burns Drive
		Gallowhill Avenue
		McAdam Way (excluding cul-de-sac between No.33 and No.55)
		Whitefaulds Avenue
		Mochrum Avenue (excluding cul-de-sac between No.10 to No.32)
		Whitefaulds Crescent
		Ladyland Road
		Coral Glen
		Welltrees Street
		Carrick Street
		Greenside
	John Knox Street	
	B7023	St Cuthbert Road
	B7024	Barns Road
-	B7023	Crosshill Road
		From Crosshill Road Maybole to King Street Crosshill
		King Street
Crosshill	B7023	Dailly Road
-		From Dailly Road Crosshill to B741 at Rowanston Toll
-	C88	From B741 at Cloyntie Toll to Dalhowan Street Crosshill
		Dalhowan Street
Crosshill	-	Milton Street
		Kirkbride Crescent
		Carrick Drive
-	C31	Kirkmichael Road (from Carrick Drive to Dalhowan Street)

Grangestone Depot - Priority 1 Carriageway Gritting Route 3 (continued)		
Town / Village	Road Number	Description
-	B742	From A77 at Nether Culzean to Dalrymple Bridge
Dalrymple		Main Street (from Dalrymple Bridge to Garden Street)*
-	B7034	Garden Street (from Main Street to South Ayrshire Council boundary at Purclewan Burn)*
-		From East Ayrshire Council boundary at Purclewan Burn to A77 near Carcluie House.
Ayr	C39	Doonholm Road (from A77 to Murdoch's Lone)
		Murdoch's Lone
-	B7024	Alloway (from Murdoch's Lone to High Maybole Road)
-		High Maybole Road (from Alloway Ayr to Alloway Road Maybole)
Maybole		Alloway Road
	Barns Terrace	
-	B7023	Culzean Road
-		From Culzean Road Maybole to A719 at Pennyglen

* Treated on behalf of Ayrshire Roads Alliance (East Ayrshire Council area)

Appendix 9 Priority 2 Carriageway Gritting Routes – South Ayrshire Council

Meadowhead Depot - Priority 2 Carriageway Gritting Route 1

1

Travel, leaving the depot, left **B742**, left **C116** at Bridgend Cottage, **Start Gritting.** **0.56kms**

2

Grit, left **C116** at Bridgend Cottage to junction with Drumcoyle Drive Coylton, **Stop Gritting.** **1.85kms**

3

Travel, via Woodhead Road and Barclaugh Drive Colton right into **A70**, fourth right into **C2** Belston - Woodside - Stair Road, **Start Gritting.** **2.61kms**

4

Grit, **C2** to junction with **B730** south west of Stair, **Stop Gritting.** **6.50kms**

5

Travel, left **B730**, across East Ayrshire Council boundary at Stair Bridge right into **C94** at Yett, **Start Gritting.**
1.61kms

6

Grit, **C94**, continue gritting across **B743** and to junction with **B730** south of Tarbolton, **Stop Gritting.**
2.55kms

7

Travel, right into **B730**, left into **C17** Torcross Road and left into **C107** Neilshill Road, **Start Gritting.**
2.98kms

8

**Grit, C107 Neilshill Road to junction with B743 Mauchline Road Mossblown, Stop Gritting.
2.28kms**

9

Travel, left B743, left B744, cross-over B730 into C115 Parkmill Road, Start Gritting. 3.66kms

10

Grit, C115 Parkmill Road to junction with C114 Largie Road, right into C114 Largie Road to junction with B743 east of Failford, Stop Gritting. 4.92kms

11

Travel, turn at a safe and convenient location and return on C114 Largie Road to the junction with C115 Parkmill Road, Start Gritting. 1.49kms

12

Grit, C114 Largie Road, to B744 at Largietoll Cottage and turn left, Stop Gritting. 1.57kms

13

Travel, left into B744 and right into C63 Lochlea Road, Start Gritting. 0.21kms

14

Grit, C63 Lochlea Road to junction with A719 east of Fairwells, Stop Gritting. 2.90kms

15

Travel, right into A719, left into C53 Carnell House - Gatehead Road at Fiveway House, Start Gritting. 1.83kms

16

Grit, C53, left into C119 Maintree - Howcommon Road and grit to junction with C64 Main Street Craigie, Stop Gritting. 3.71kms

17

Travel, *C64* onto *U80* High Langside Road, right into *B730* and left *C138* Langlands - Underhills Road, **Start Gritting. 3.33kms**

18

Grit, *C138* Langlands - Underhills Road to *A77* south of Hansel Village, **Stop Gritting. 4.79kms**

19

Travel, turn at a safe and convenient location and return along *C138*, right into *C106* Adamton Mains Road, **Start Gritting. 0.54kms**

20

Grit, *C106* Adamton Mains Road to junction with *B739*, **Stop Gritting. 2.28kms**

21

Travel, right into *B739* into Monkton (Baird Road), right into Kilmarnock Road to *A77* at Dutch House roundabout. Travel southbound on *A77* to *A77* Whitletts Roundabout, left into *B743* and right into *C37* Auchincruive Road, **Start Gritting. 10.44kms**

22

Grit, *C37* Auchencruive Road to junction with *B744* at Broadhead, **Stop Gritting. 2.93kms**

23

Travel, right *B744*, left *A70* then right into *C105* Knocksoul Road, **Start Gritting. 1.78kms**

24

Grit, *C105* Knocksoul Road to junction with *C74* Macnairston Road and turn right, **Stop Gritting. 1.47kms**

25

Travel, right into **C74** Macnairston Road, left into **C39** Sessionfield Road, **Start Gritting**.
0.41kms

26
Grit, **C39 Sessionfield Road** to junction with **A713** at Mosshill turn right, **Stop Gritting**.
2.67kms

27
Travel, right into **A713**, left into **C39 Corton Road** left into **A77**, left into **B7034**, left into **C73** Pleasantfield Road at Carcluie Farm, **Start Gritting**.
5.70kms

28
Grit, **C73 Pleasantfield Road** to junction with **C39 Corton Road**, turn right, **Stop Gritting**.
2.49kms

29
Travel, right into **C39 Corton Road**, right into **A713**, continue traveling on **A713** across East Ayrshire Council boundary to junction with **C21** Craigs Road at Milreoch turn left, **Start Gritting**.
6.29kms

30
Grit, **C21 Craigs Road** across South Ayrshire Council boundary to junction with **B742** at Low Colton turn right, **Stop Gritting**.
8.35kms

31
Travel, right into **B742**, right into **A70**, left Carbieston Avenue Coylton at Lorne Terrace junction, **Start Gritting**.
0.62kms

32
Grit Carbieston Avenue, left into Corsehill Crescent, Craig View, right Carbieston Avenue to Corsehill Crescent junction, **Stop Gritting**.
0.51kms

33

Travel, along Carbieston Avenue, right into *A70*, left into *B742* and return to Depot. **Route Ends.**
0.87kms

Total route length: 103.029kms.

Total length gritted: 55.092kms (53%)

Total length free travel: 47.937kms (47%)

Meadowhead Depot - Priority 2 Carriageway Gritting Route 2

1

Travel, via **B742** and **A70** to **A77** Holmston roundabout, take second exit into **A70** Holmston Road, left Hillfoot Road, left Masonhill Road, **Start Gritting.** **8.18kms**

2

Grit, Masonhill Road, right Cedar Road, right into Spruce Park, right into Holly Bank, right into Cedar Road and continue gritting after Spruce Park. Left Briar Grove, left Willow Park, right Larchwood Road, left Roman Road, right **A713** Dalmellington Road, **Stop Gritting.** **2.17kms**

3

Travel, **A713** Dalmellington Road, left Belmont Road, left Nursery Road, **Start Gritting.** **0.73kms**

4

Grit, Nursery Road, right Peggieshill Road, **Stop Gritting.** **0.16kms**

5

Travel, Peggieshill Road, left Annfield Glen Road, left Glendale Crescent, **Start Gritting.**
0.18kms

6

Grit, Glendale Crescent, left Annfield Glen Road, **Stop Gritting.** **0.85kms**

7

Travel, right Burnbank Road, right Fenwickland Avenue, left Belmont Road, across **A79** Maybole Road, into Ewenfield Road, **Start Gritting.** **0.79kms**

8

Grit, Ewenfield Road, right *B7024* Monument Road, Stop Gritting. 0.44kms

9

Travel, *B7024* Monument Road, right Ewenfield Avenue, Start Gritting. 0.19kms

10

Grit, Ewenfield Avenue, left Ewenfield Road, Stop Gritting. 0.39kms

11

Travel, left *A79* St. Leonards Road, left Bellevale Road, Start Gritting. 0.11kms

12

Grit, Bellevale Road, right *B7024* Monument Road, Stop Gritting. 0.37kms

13

Travel, *B7024* Monument Road, left Corsehill Road, Racecourse View, left *A719* Doonfoot Road, *A719* Dunure Road, left Longhill Avenue, left Lamford Drive, Start Gritting. 3.44kms

14

Grit, Lamford Drive, left Glenalla Crescent, Craigstewart Crescent, left Lamford Drive, Stop Gritting. 1.32kms

15

Travel, right Longhill Avenue, right *A719* Dunure Road, right Greenfield Avenue, right Mount Charles Crescent, Start Gritting. 1.46kms

16

Grit, Mount Charles Crescent (until it rejoins Mount Charles Crescent), right Greenfield Avenue, Stop Gritting. **0.76kms**

17

Travel, Greenfield Avenue, right Baird Road, Start Gritting. **0.55kms**

18

Grit, Baird Road, right Cairn Crescent, right Baird Road, left Cambusdoon Drive, Stop Gritting.
0.78kms

19

Travel, left Cambusdoon Drive, at Baird Road, Start Gritting. **0.26kms**

20

Grit, Cambusdoon Drive from Baird Road to *B7024* Alloway, left *B7024* Alloway, Stop Gritting.
0.35kms

21

Travel, *B7024* Alloway, right Doonholm Road, left The Loaning, right Woodend Road, Start Gritting.
0.66kms

22

Grit, Woodend Road, right The Loaning, Stop Gritting. **0.80kms**

23

Travel, The Loaning, Laughlanglen Road, right Whin Hill Road, Start Gritting. **0.85kms**

24

Grit, Whin Hill Road, left A79 Maybole Road, Stop Gritting.

0.42kms

25

Travel, A79 Maybole Road, left Laughlanglen Road, right Taybank Drive, Start Gritting.

0.48kms

26

Grit, Taybank Drive, right Sunningdale Avenue, left Longbank Drive, left Longbank Road, right B7024 Monument Road, Stop Gritting.

1.12kms

27

Travel, B7024 Monument Road, right Ewenfield Road, across A79 Maybole Road, Belmont Road, left Belmont Avenue, right Belmont Drive, Start Gritting.

0.86kms

28

Grit, Belmont Drive, onto left Meadow Park Drive, onto Chalmers Avenue, right Belmont Avenue, Stop Gritting.

0.89kms

29

Travel, Belmont Avenue, right Chalmers Road, Lochlea Drive, left St. Phillans Avenue, Start Gritting.

0.92kms

30

Grit, St. Phillans Avenue, right Leslie Crescent, left St. Andrews Street, right A713 Castlehill Road, Stop Gritting.

0.93kms

31

Travel, A713 Castlehill Road onto A79 Station Road, B747 Craigie Road, left Craigie Avenue, Start Gritting.

1.02kms

32

Grit, Craigie Avenue, Albert Terrace, right **A79** John Street, **Stop Gritting.** **0.34kms**

33

Travel, **A79** John Street, right Elba Street, **Start Gritting.** **0.24kms**

34

Grit, Elba Street, left James Street, left George Street, right Limonds Wynd, left **A719** King Street, **Stop Gritting.** **0.43kms**

35

Travel, right **A79** Allison Street, **A79** New Road, **A79** Tams Brig, **A79** Prestwick Road, right Seaforth Road, **Start Gritting.** **1.70kms**

36

Grit Seaforth Road, 5th right East Park Road, left Hunter's Avenue, **Stop Gritting.** **1.15kms**

37

Travel, Hunter's Avenue, 2nd left Cambuslea Road, **Start Gritting.** **0.15kms**

38

Grit Cambuslea Road, right West Sanquhar Road, left, right, Somerset Road, left Back Hawkhill Avenue, left Wilson Street, right Lawson Street, right Lochside Road, right Back Hawkhill Avenue, left Hawkhill Avenue to **A719** Whitletts Road, **Stop Gritting.** **2.67kms**

39

Travel, right **A719** Whitletts Road, left **B747** Craigie Road, left Craigie Way, continue on Craigie Way to Churchill Crescent, **Start Gritting.** **1.88kms**

40

Grit, Churchill Crescent, left Hayhill, **Stop Gritting.** **0.38kms**

41

Travel, Hayhill, Mainholm Road, right Westwood Avenue, **Start Gritting.**

1.05kms

42

Grit, Westwood Avenue, continue left Thornyflat Road, at **A719** Whitletts Road, **Stop Gritting.**

1.35kms

43

Travel, Low Road, left **B743** Heathfield Road, right East Road, right Semple Road, **Start Gritting.**
2.01kms

44

Grit, Semple Road, left at second entrance to Obree Avenue, left Semple Road, right Pentland Drive, left Semple Road, **Stop Gritting.**

1.69kms

45

Travel, right East Road, left St. Quivox Road, to junction with Adamton Road North, **Start Gritting.**
1.92kms

46

Grit, St. Quivox Road, left **A79** Main Street, **Stop Gritting.**

0.68kms

47

Travel, left **A79** Main Street, right Grangemuir Road, **Start Gritting.**

0.19kms

48

Grit, Grangemuir Road, right Midton Road, right Station Road, to junction with **A79** The Cross, left **Stop Gritting.**

0.86kms

49

Travel, A79 The Cross, right Alexandra Avenue, right Caerlaverock Road, left Berelands Road onto Sherwood Road to junction with Outdale Avenue, **Start Gritting.** **1.19kms**

50

Grit, Sherwood Road, left Glenburn Road, left Shawfarm Road, Stop Gritting. **0.50kms**

51

Travel, via Shawfarm Road, *A79, A78, A77 (southbound), A70* and *B742* to Depot. **End of Route.**
21.19kms

Total route length: 73.96kms.

Total length gritted: 21.76kms (29%)

Total length free travel: 52.20kms (71%)

Meadowhead Depot - Priority 2 Carriageway Gritting Route 3

1

Travel, leaving the depot, right **B742**, via **A70**, **A77**, **A78**, **A79**, **B749** Monktonhill Road, **B749** Craigend Road, right Fullarton Drive, **Start Gritting.** **20.22kms**

2

Grit, Fullarton Drive, left Eglinton Crescent, onto Fullarton Crescent, onto Wemyss Crescent, left Fullarton Drive, **Stop Gritting.** **2.16kms**

3

Travel, Fullarton Drive, left Lochend Road, **Start Gritting.** **0.11kms**

4

Grit, Lochend Road, left Bentinck Drive, left Bentinck Crescent, right Bentinck Drive, to Bentinck Crescent, **Stop Gritting.** **1.30kms**

5

Travel, Bentinck Drive, left Lochend Road, **Start Gritting.** **0.11kms**

6

Grit, Lochend Road, left **B749** South Beach, **Stop Gritting.** **0.18kms**

7

Travel, **B749** South Beach, left **B749** Craigend Road, left Bentinck Drive, **Start Gritting.** **0.50kms**

8

Grit, Bentinck Drive to junction with Bentinck Crescent, **Stop Gritting.** **0.17kms**

9

Travel, Bentinck Drive to junction of Lochend Road, **Start Gritting.**

.26kms

10

Grit, Bentinck Drive to Yorke Road, **Stop Gritting.**

0.32kms

11

Travel, Bentinck Drive, right St. Meddan's Street, at junction with Barassie Street, **Start Gritting.**
0.69kms

12

Grit, St. Meddan's Street, Logan Drive, right Donald Avenue, right Brown Avenue, to junction with Logan Drive, **Stop Gritting.**
1.23kms

13

Travel, left Logan Drive, left Wallacefield Road, **Start Gritting.**

0.19kms

14

Grit Wallacefield Road, right Donald Crescent, to junction with **A759** Dundonald Road, **Stop Gritting.**
0.53kms

15

Travel, **A759** Dundonald Road, right Ottoline Drive, **Start Gritting.**

0.54kms

16

Grit, Ottoline Drive, right Lady Margaret Drive, left Balcomie Crescent, right Lady Margaret Drive, left Wilson Avenue, right Hunter Crescent, left Wilson Avenue to junction with Lady Margaret Drive, **Stop Gritting.**
2.89kms

17

Travel, Wilson Avenue to junction with Hunter Crescent, **Start Gritting.** **0.39kms**

18

Grit, Wilson Avenue, left **A759** Dundonald Road, **Stop Gritting.** **0.17kms**

19

Travel, **A759** Dundonald Road, right Logan Drive, left Brown Avenue, **Start Gritting.** **1.25kms**

20

Grit, Brown Avenue, right Brodie Avenue, left Hawthorn Place, **Stop Gritting.** **0.42kms**

21

Travel, **turn at a safe and convenient location**, Brodie Avenue, left Brown Avenue, right Logan Drive, right Gillies Street, **Start Gritting** **0.53kms**

22

Grit, Gillies Street to **A759** Dundonald Road turn left, **Stop Gritting.** **0.35kms**

23

Travel, **A759** Dundonald Road, left Logan Drive, to junction with Donald Crescent, **Start Gritting.** **0.62kms**

24

Grit, Logan Drive, left Campbell Drive, right Fraser Avenue, Logan Drive at junction with Campbell Drive, **Stop Gritting.** **1.10kms**

25

Travel, Logan Drive, left Kenmore, **Start Gritting.** **0.14kms**

26

Grit, left Kenmore, right Marr Drive, left Logan Drive, **Stop Gritting**.

0.54kms

27

Travel, Logan Drive, right **A759** Dundonald Road, Portland Street, right Barassie Street, right **B746** North Shore Road, to junction with Walker Avenue, **Start Gritting**.

1.99kms

28

Grit, right Walker Avenue, right Johnston Drive, left Queens Drive, left Barassiebank Lane, right Burnfoot Road, right **B746** Beach Road, **Stop Gritting**.

1.52kms

29

Travel, **B746** Beach Road to junction with **B746** Kilmarnock Road, **Start Gritting**.

0.40kms

30

Grit, Beach Road, right Hillhouse Road, left Gailes Road, onto Firth Road, right Arran Road, right Beach Road, right Kilkerran Drive, right Firth Road, left Carrick Road, right Gailes Road, right Arran Road, left Beach Road to junction with Hillhouse Road, **Stop Gritting**.

3.41kms

31

Travel, left Hillhouse Road, right Hillhouse Gardens, **Start Gritting**.

0.17kms

32

Grit, Hillhouse Gardens to Railway Station entrance, **Stop Gritting**.

.25kms

33

Travel, turn at a safe and convenient location, return on Hillhouse Gardens, left Hillhouse Road, left Beach Road, left **B746** Kilmarnock Road, left Lang Road, **Start Gritting.** **1.58kms**

34

Grit, Lang Road, right Lochgreen Avenue, left Auchengate, right Lochgreen Avenue, right Lang Road, left Goatfell View, right Adams Gate, first entrance left, to Links Crescent, right Adams Gate, to Links Crescent junction, **Stop Gritting.** **1.17kms**

35

Travel, Adams Gate, left Goatfell View to Lang Road junction, **Start Gritting.** **0.17kms**

36

Grit Goatfell View, right Whins Road, right Lang Road, **Stop Gritting.** **0.23kms**

37

Travel, Lang Road, left Westward Way, **Start Gritting.** **0.07kms**

38

Grit, Westward Way, right Lang Road, **Stop Gritting.** **0.19kms**

39

Travel, Lang Road, right **B746** Kilmarnock Road, left Deveron Road, right Milton Crescent, **Start Gritting.** **0.51kms**

40

Grit, Milton Crescent until it rejoins Milton Crescent, **Stop Gritting.** **0.49kms**

41

Travel, Milton Crescent, right Deveron Road, right Calder Avenue, **Start Gritting.** **0.36kms**

42

Grit, Calder Avenue, right Coyle Park to end, **Stop Gritting.** **0.39kms**

43

Travel, turn at a safe and convenient location, Coyle Park, left Calder Avenue, right Deveron Road, left Dornal Drive, **Start Gritting.** **0.47kms**

44

Grit, Dornal Drive, right Spallander Road, left Deveron Road, **Stop Gritting.** **0.45kms**

45

Travel, left Deveron Road, left Lugar Place, **Start Gritting.** **0.49kms**

46

Grit, Lugar Place, right Spey Road, left Deveron Road, **Stop Gritting.** **0.45kms**

47

Travel, Deveron Road, left North Drive to junction with Afton Gardens, **Start Gritting.** **0.32kms**

48

Grit, North Drive, right Aldersyde Avenue, right Lochlea Avenue, left West Crescent, left Central Avenue, **Stop Gritting.** **0.99kms**

49

Travel, left Central Avenue right Merrick Avenue, **Start Gritting.** **0.16kms**

50

Grit, Merrick Avenue, left Mossgiel Avenue, left Lochlea Drive, **Stop Gritting.** **0.27kms**

51

Travel, Lochlea Drive, left West Crescent, left Merrick Avenue, **Start Gritting.** **0.40kms**

52

Grit, Merrick Avenue, right Central Avenue, **Stop Gritting.** **0.12kms**

53

Travel, Central Avenue, left **A759** Dundonald Road, onto **A759** Troon Road, left Collins Drive Loans, **Start Gritting.** **1.14kms**

54

Grit, Collins Drive, right Craikslane Place to end, **Stop Gritting.** **0.45kms**

55

Travel, turn at a safe and convenient location, left Collins Drive, left Kyle Crescent, **Start Gritting.** **0.20kms**

56

Grit, Kyle Crescent, left Dundonald Road, **Stop Gritting.** **0.25kms**

57

Travel, **A759** Troon Road, **C32** Old Loans Road, right **U106** Craikslane Road, **Start Gritting.** **0.45kms**

58

Grit, **U106** Craikslane Road to road end at Cleavelance Farm, **Stop Gritting.** **1.77kms**

59

Travel, turn at a safe and convenient location, return along **U106** Craikslane Road, right into **C32** Old Loans Road, left **B730** Tarbolton Road Dundonald onto **B730** Drybridge Road, left Kilnford Drive, 4th right Kilnford Crescent, **Start Gritting.** **6.27kms**

60

Grit, Kilnford Crescent, right Kilnford Crescent, left Old Auchans View to junction with Kilnford Drive, **Stop Gritting.** **0.81kms**

61

Travel, right Kilnford Drive, right **B730** Drybridge Road, left **B750** Kilmarnock Road, right Bruce Avenue, **Start Gritting.** **0.56kms**

62

Grit, Bruce Avenue, left Warly Drive, right Bruce Avenue to junction with Warly Drive, **Stop Gritting.** **0.61kms**

63

Travel, Bruce Avenue, right **B750** Kilmarnock Road, right Earl Drive, **Start Gritting.** **0.38kms**

64

Grit, Earl Drive, left Earl Rise, left **B730** Tarbolton Road, **Stop Gritting** **0.68kms**

65

Travel, **B730** to junction with **C96 Muirhill Road** turn left, **Start Gritting.** **1.94kms**

66

Grit, **C96 (Muirhill Road)** to junction with **B751**, **Stop Gritting.** **0.90kms**

67

Travel, **B751** onto **B730** to Tarbolton, left St Andrew's Way, **Start Gritting.** **8.20kms**

68

Grit, St Andrew's Way, circumnavigate roundabout into Red Rose Way, right Bard Drive, right *B730* Croft Street, Stop Gritting. 0.62kms

69

Travel, *B730* Croft Street left Springfield Road, Start Gritting. 0.04kms

70

Grit, Springfield Road to Garden Street, Stop Gritting. 0.32kms

71

Travel, left Garden Street, right Burns Street, left Sandgate Street to Back Street junction Start Gritting 0.35kms

72

Grit, Smithfield Crescent, into Fail Avenue, right Mansefield Road, right Back Street, Stop Gritting. 0.83kms

73

Travel, via Back Street, Princes Street, *B730* Montgomerie Street, *B744*, *B743*, *B744* (through Annbank), *A70* and *B742* to Depot. Route Ends. 14.21kms

Total route length: 94.908kms.

Total length gritted: 28.527kms (30%)

Total length free travel: 66.381kms (70%)

Grangestone Depot - Priority 2 Carriageway Gritting Route 1

1

Travel, leave depot and turn left into **B741** then travel via the **B741** to **C44** at the former Dailly Station and turn left, **Start Gritting.** **7.12kms**

2

Grit, C44 to A77 at Turnberry, Stop Gritting. **9.09kms**

3

Travel, right into **A77**, travel via **A77** northbound to **C28** Blawearie Road south west of Kirkoswald and turn left, **Start Gritting.** **3.96kms**

4

Grit, C28 to A719 north east of Maidens, Stop Gritting. **1.79kms**

5

Travel, right into **A719**, travel via **A719** and **B7023** past Pennyglen, left into **C60** opposite Enoch Lodge, **Start Gritting.** **6.39kms**

6

Grit, C60 to B7024 at Cassillis View and turn right, Stop Gritting. **3.23kms**

7

Travel, right into **B7024** to **B7023** Barns Road Maybole, left into **B7023** then across **A77** High Street into **B7023** St Cuthberts Road and travel via **B7023** Crosshill Road to **C58** opposite Ballochbroe and turn left, **Start Gritting.** **4.02kms**

8

Grit, C58 to B7045 at Chapelton Old Toll and turn left, Stop Gritting. **1.17kms**

9

Travel, left into **B7045**, then left into **C46** at Harkieston Bridge, **Start Gritting.** **0.95kms**

10

Grit, C46 to A77 Cassillis Road Maybole, Stop Gritting. **1.79kms**

11

Travel, left into **A77**, right into **B7023**, through Maybole, right into **C122** Cargill Road, left Gardenrose Path to Fineview Place junction, **Start Gritting.** **1.65kms**

12

Grit, C122 from Fineview Place Maybole, across C60, continue gritting C122 to B7024 east of Knockdon and turn left, Stop Gritting. **7.44kms**

13

Travel, left into **B7024**, right into **C122**, **Start Gritting.** **0.05kms**

14

Grit, C122 to A77 Main Road Minishant and turn right, Stop Gritting. **1.25kms**

15

Travel, right into **A77**, left into **B7045** at Hogg's Corner, left into **B742**, right into **C110** at Barnford Cottage south of Dalrymple, **Start Gritting.** **5.88kms**

16

Grit, C110 to Kirkmichael, left into C11 Patna Road Kirkmichael and continue gritting C11 through East Ayrshire Council boundary to Dalvennan Bridge, Stop Gritting. **11.13kms**

17

Travel, turn at a safe and convenient location and travel back along *C11*, turn left into *C111* west of Stepends Bridge, **Start Gritting.** **2.63kms**

18

Grit, *C111* to *B7045* at Black Bridge and turn right, Stop Gritting. **1.53kms**

19

Travel, right into *B7045*, left into *C31* at Aitkenhead Toll, Start Gritting. **1.40kms**

20

Grit, *C31* to *C88* Dalhowan Street Crosshill, Stop Gritting. **2.83kms**

21

Travel, right into *C88* Dalhowan Street then left into *B7023* Dailly Road and travel via *B7023* and *B741* to *C29* (branch) at Ruglen and turn right, Start Gritting. **3.56kms**

22

Grit, *C29* (branch) to level crossing at Kilkerran, about approximately 10 metres from centre line of railway track, Stop Gritting. **0.56kms**

23

Travel, to about approximately 10 metres after the centre line of railway track, Start Gritting.

0.03kms

24

Grit, *C29* (branch) westbound to *C29* opposite Mill, Stop Gritting. **0.10kms**

25

Travel, turn at a safe and convenient location and return along **C29** (branch) to Ruglen and bear right, **Start Gritting.** **0.57kms**

26

Grit, C29 to B741 and turn right, Stop Gritting. **0.09kms**

27

Travel, B741 southbound towards Dailly, continue into **B7035** at Roan, travel via **B7035** to **B734** at Old Dailly and turn right into **U39** Hawkhill Road Old Dailly **Start Gritting.** **10.02kms**

28

Grit, U39 Hawkhill Road, continue gritting past Hawkhill Farm to **C101** and turn left, **Stop Gritting.** **1.02kms**

29

Travel, via C101 and B741 to Depot. End of route. **4.66kms**

Total route length: 95.881kms.

Total length gritted: 42.995kms (45%)

Total length free travel: 52.886kms (55%)

Grangestone Depot - Priority 2 Carriageway Gritting Route 2	
1	
Leave Depot and travel, on B741 to Main Street Straiton continue ahead onto C1 Main Street and continue along C1 to Tarlaw Bridge, Start Gritting 27.51kms	
2	
Grit, C1 from Tarlaw Bridge southwards to the boundary with Dumfries and Galloway, Stop Gritting. 17.83kms	
3	
Travel, C46W in Dumfries and Galloway to A714 at Bargrennan, turn right into A714, continuing on A714 northbound to C72 in Barrhill and turn left into C72 and continue on C72 to Barrhill Railway Station access road, Start Gritting. 26.80kms	
4	
Grit, C72 from Barrhill Railway Station access road to turning head 30 metres north of Cattle Grid at Dumfries and Galloway Council Boundary (Drumahastie Burn) Stop Gritting. 6.74kms	
5	
Travel, turn at a safe and convenient location and return along C72 to A714 at Barrhill, turn left into A714, continuing on A714 northbound to C13 at Pinmore and turn right, Start Gritting. 20.272kms	
6	
Grit, C13 to junction with B734 at Penkill and turn left, Stop Gritting 9.15kms	
7	
Travel, left into B734, right into C30, left into B7035 and right into C101 at Lovestone, Start Gritting. 1.26kms	

8

Grit, *C101* to junction with *B741* and turn left, Stop Gritting.

1.64kms

9

Travel, via *B741* to Depot, End of route.

3.44kms

Total route length: 114.64kms.

Total length gritted: 35.36kms (31%)

Total length free travel: 79.28kms (69%)

Appendix 10 Priority 3 Carriageway Gritting Routes – South Ayrshire Council

Meadowhead Depot - Priority 3 Carriageway Gritting Route 1

1

Leave depot and travel via the **B742, A70, B742** and **C21** to the **U115** (Barbieston Road). **Start Gritting.**
3.94kms

2

Grit, left into U115 and grit over bridge at Coyle Water, Stop Gritting. **0.51kms**

3

Travel, turn at a safe and convenient location and return to the **C21**, continue on **C21** to junction with **U95** (Stabneoch Road), **Start Gritting.** **3.13kms**

4

Grit, U95 to boundary with East Ayrshire, Stop Gritting. **0.33kms**

5

Travel, turn at a safe and convenient location and travel left into **C21**, right into **A713**, left into **B7034**, left into **U35**, travel to boundary with East Ayrshire, **Start Gritting.** **6.87kms**

6

Grit, U35 to U55 (Netherton Road), right into U55 to B742, Stop Gritting. **3.43kms**

7

Travel, turn at a safe and convenient location and return along **U55**, at junction with **U35**, **Start Gritting.**
2.57kms

8

Grit, U55 to U32 (Fardenwilliam Road), left into U32, continue gritting to boundary with East Ayrshire, Stop Gritting. 2.84kms

9

Travel, turn at a safe and convenient location and return along U32 to junction with U55, Start Gritting. 0.17kms

10

Grit, the U32 to the C110, Stop Gritting. 2.57kms

11

Travel, left into the C110, left into the U61 (Roaston Road), Start Gritting. 2.40kms

12

Grit, the U61 to C11, Stop Gritting. 0.69kms

13

Travel, right into the C11, right into the C110 and travel to the U23 (Crawfordston Road), Start Gritting. 3.17kms

14

Grit, left into the U23 and continue gritting to the B7045, Stop Gritting. 3.43kms

15

Travel, left into the B7045, right into the C46, left into the A77, right into the B7023, left into the A719 to the U111 (Culzean Castle Road), Start Gritting. 9.18kms

16

Grit, right into U111 and continue to end of main gate, Stop Gritting. 0.39kms

17

Travel, return along *U111*, left into *A719*, left into *U5* (Balchrison Road), **Start Gritting**.

2.28kms

18

Grit, *U5* to end, Stop Gritting.

2.34kms

19

Travel, return along *U5*, left into *A719*, left into *U24* (Croy Road), **Start Gritting. 5.61kms**

20

Grit, *U24* to end, Stop Gritting.

1.19kms

21

Travel, return along *U24*, left into *A719*, right into the *U63* (Sauchrie Road), **Start Gritting.**
8.89kms

22

Grit, *U63* to the *B7024*, Stop Gritting.

6.17kms

23

Travel, right into *B7024*, left into *U47* (Laigh Grange Road), **Start Gritting.** 0.06kms

24

Grit, *U47* to the *A77*, Stop Gritting.

1.51kms

25

Travel, left into *A77* to the *U14* (Brae Road), **Start Gritting.**

2.76kms

26

Grit, U14 to the B7024, Stop Gritting.

1.23kms

27

Travel, turn at a safe and convenient location and return along the **U14**, left into the **A77**, right into the **C39**, right into the **C74**, left into the **B742**, right into the **U100** (Martnaham Road), **Start Gritting.**

11.78kms

28

Grit, U100 to the boundary with East Ayrshire, Stop Gritting.

2.25kms

29

Travel, return along **U100**, right into **U93** (Sandhill Road), **Start Gritting.**

1.53kms

30

Grit, U93 to boundary with East Ayrshire, Stop Gritting.

3.18kms

31

Travel, return along **U93**, right into **C21**, left into **B742**, right into **C74**, right into the **U82** (Laighpark Road), **Start Gritting.**

4.40kms

32

Grit, U82 to the A70, Stop Gritting.

2.07kms

33

Travel, right into the **A70**, left into the **B742**, return to depot.

Route ends.

2.44kms

Total route length: 105.310kms.

Total length gritted: 34.145kms (32%)

Total length free travel: 71.165kms (68%)

Meadowhead Depot - Priority 3 Carriageway Gritting Route 2

1

Travel, leave depot right into **B742**, right **A70**, right **U90** (Potterhill Road), **Start Gritting**.

3.68kms

2

Grit, U90 to the B744, Stop Gritting.

1.93kms

3

Travel, right into **B744**, right into **U91** (Pierhill Road), **Start Gritting**.

3.76kms

4

Grit, U91 to the B730, Stop Gritting.

2.14kms

5

Travel, left into **B730**, right into **B743**, travel across boundary with East Ayrshire. Left into **U92** (Redcraig Road) and at boundary, **Start Gritting**.

7.85kms

6

Grit, U92 to the C35, Stop Gritting.

3.32kms

7

Travel, left into the **C35**, right into the **B744**, left into the **U83** (Longhouse Road), **Start Gritting**.

1.54kms

8

Grit, U83 to the A719, Stop Gritting.

2.52kms

9

Travel, turn at a safe and convenient location, return along the U83 to junction with U84 (Garroch Road), Start Gritting.

0.09kms

10

Grit, left into U84 to the B744, Stop Gritting.

2.78kms

11

Travel, right into the B744, right into the U83, right into the A719, left into the C53, left into the U20 (Sidehead Terrace, Fiveways), Start Gritting.

3.54kms

12

Grit, U20 to end, Stop Gritting.

0.70kms

13

Travel, turn and return along the U20, right into the C53, right into A719, right into the U70 (Broadyards Road), Start Gritting.

3.40kms

14

Grit, U70 to the C119, Stop Gritting.

1.41kms

15

Travel, right into the C119, left into the U74 (East Hillhouse Road), Start Gritting.

0.24kms

16

Grit, U74 to the boundary with East Ayrshire, Stop Gritting.

0.71kms

17

Travel, return along **U74**, right into the **C119**, left into the **U70**, right into the **A719**, left into the **U86** (Millburn Road), **Start Gritting.**

3.06kms

18

Grit, U86 to the B744, Stop Gritting.

2.87kms

19

Travel, turn at a safe and convenient location and return along the U86, left into the U87 (Mossie Road), Start Gritting.

1.08kms

20

Grit, U87 to the B730, Stop Gritting.

2.25kms

21

Travel, right into the B730, right into A719, left into the B730, left into the U88 (Midton Road), Start Gritting.

1.78kms

22

Grit, U88 and U97 (Barnweil Road) taking care to complete the circuit at Barnweil, continue to junction with C138, Stop Gritting.

2.60kms

23

Travel, left into the C138 left into the U89 (Pisgah Road), Start Gritting.

0.09kms

24

Grit, U89, take left at Pisgah and continue gritting to junction of the A719, Stop Gritting.

2.98kms

25

Travel, turn at a safe and convenient location and return along road to Pisgah, Start Gritting.

1.44kms

26

Grit, U89 to junction with U96 (Wardneuk Road), turn right into the U96 and continue gritting to the C138, Stop Gritting.

1.76kms

27

Travel, return along U96 to junction with U76 (Foulton Road), Start Gritting.

0.81kms

28

Grit, U76 to the B739, Stop Gritting.

1.29kms

29

Travel, left into the B739, right into the A719, right into the A77 at Sandyford Toll, left into the U117 (Shields Road), Start Gritting.

3.14kms

30

Grit, U117 to Shawhill Farm Road end, Stop Gritting.

0.59kms

31

Travel, turn at a safe and convenient location and return along the U117, left into the A77 (northbound), right into the A77 (northbound) at Dutch House Roundabout then left into left into the slip road to the B7038 (Kilmarnock), take left into the U112 (Spitalhill Road), Start Gritting.

11.04kms

32

Grit, U112 to Spittalhill Farm, Stop Gritting.

0.92kms

33

Travel, turn at a safe and convenient location and return along **U112** and left into **B7038**, right into the **U94** (Stafflar Road {at East Ayrshire}) at boundary, **Start Gritting.** 0.98kms

34

Grit, U94 to the B730 at Bogend Toll roundabout, Stop Gritting.

2.54kms

35

Travel, onto B730 at Bogend Toll roundabout, take 2nd exit from roundabout onto B730 left into Whitelees Road, Start Gritting.

0.18kms

36

Grit, Whitelees Road to end of road at turning head on southside of A77, Stop Gritting. 0.63kms

37

Travel, turn at a safe and convenient location and return along Whitelees Road, left into the **B730, across A77 overbridge, left into B730 at roundabout then right into the B751, right into the U73 (Ditton Road), Start Gritting.**

3.25kms

38

Grit, U73 to end, Stop Gritting.

0.26kms

39

Travel, turn at a safe and convenient location and return along **U73**, continue into **B751**, left into the **U108** (Rowanhill Road), **Start Gritting.**

0.81kms

40

Grit, U108, continue gritting across the **B730** into the **U72**, left into the **U99** (Dundonald /Symington Road) and continue gritting to the junction with the **U98** (Corraith Road), **Stop Gritting**.

4.10kms

41

Travel, turn at a safe and convenient location and return along the **U99**, at the junction with **U72**, **Start Gritting**.

1.22kms

42

Grit, U99 to the **C32**, **Stop Gritting**.

0.91kms

43

Travel, right into **C32**, left into **B730**, right into **A759**, left into **C128**, right into the **U109** (Cockhill Road), **Start Gritting**.

3.21kms

44

Grit, U109 to 'Y' junction, **Stop Gritting**.

0.82kms

45

Travel, turn at a safe and convenient location and return along **U109**, left into **C128**, right into **A759**, left at roundabout into **A759**, continue along **A759** towards Loans, left into **U78** (Hillhouse Road), **Start Gritting**.

6.58kms

46

Grit, U78 to Dovecot Hill, **Stop Gritting**.

0.81kms

47

Travel, turn at a safe and convenient location and return along the **U78**, left into **A759**, left into **U105** (Collenan Road), **Start Gritting**.

1.24kms

48

Grit, *U105* to the 'Moreland/Water Works Cottages', Stop Gritting.

0.61kms

49

Travel, turn at a safe and convenient location and return along *U105*, left into *A759*, left into *C32*, right into *U110* (Old Craikslan), Start Gritting.

1.90kms

50

Grit, *U110* to end, Stop Gritting.

0.06kms

51

Travel, turn at a safe and convenient location and return along *U110*, left into *C32*, left into *B746*, right into *U75* (Fullarton), Start Gritting.

1.35kms

52

Grit, *U75*, right into *U114* (Isle of Pin Road) continue gritting to *C52* (Monktonhill Road), Stop Gritting.

1.58kms

53

Travel, left into Monktonhill Road, left into *U75*, Start Gritting.

1.04kms

54

Grit, *U75* to the junction with *U75* (at Fairlees), Stop Gritting.

0.81kms

55

Travel, right along *U75*, left into *B746*, right into *U98*, right at roundabout onto slip road to *A78*, continue along *A78* to Monktonhill roundabout, exit right into the *A79*. Travel to second roundabout (Prestwick Airport entrance) and circumnavigate, take left into the *U50* (St Andrews Caravan Park Road), Start Gritting.

6.64kms

56

Grit, U50 to caravan park entrance, Stop Gritting.

0.56kms

57

Travel, turn at a safe and convenient location and return along U50, left into A79 to Monktonhill roundabout and exit into U81 (Kerrix Road), Start Gritting.

2.32kms

58

Grit, U81 to Main Street, Symington, Stop Gritting.

4.61kms

59

Travel, right into Main Street, left into Symington Road South, left into A77 northbound, continue on A77 then left into B730 at Bogend, then take 1st exit at roundabout into B730 travel across A77 overbridge then take 1st exit at roundabout into B730 then left into A77 (southbound), left into the U79 (Helenton Mains Road), Start Gritting.

11.83kms

60

Grit, U79 to end, Stop Gritting.

1.38kms

61

Travel, turn at a safe and convenient location and return along U79, left into A77 (southbound), continue on A77 through Dutch House and Whitletts roundabouts. Continue on A77, left U85 (Mainholm Road), Start Gritting.

4.71kms

62

Grit, U85 to end, Stop Gritting.

2.60kms

63

Travel, turn at a safe and convenient location and return along U85, left into A77, left into A70 and return to depot. Route Ends.

10.71kms

Total route length: 158.737kms.

Total length gritted: 52.838kms (33%)

Total length free travel: 105.899kms (67%)

Grangestone Depot - Priority 3 Carriageway Gritting Route 1		
1	Travel, leave depot and travel left into B741 to the U25 (Delamford), right into the U25 , Start Gritting.	
		10.47kms
2	Grit, U25 to the junction with the U66 (Stinchar Road), Stop Gritting.	8.29kms
3	Travel, right into U66 , left into B734 , right into U11 , Start Gritting.	6.09kms
4	Grit, U11 to before bridge over the River Stinchar. DO NOT CROSS THE BRIDGE , Stop Gritting.	0.50kms
5	Travel, return along U11 , left into the B734 , right into U66 , continue to the U57 (Nick of the Balloch Road), Start Gritting.	10.74kms
6	Grit, right into U57 and continue gritting to the C1 , Stop Gritting.	6.21kms
7	Travel, left into C1 and continue to U8 (Ballochbeatties Road), right into the U8 , Start Gritting.	7.58kms
8	Grit, U8 to end, Stop Gritting.	2.53kms
9	Travel, turn at a safe and convenient location and return along the U8 , right into the C1 , right into the U42 (Knockdon Road), Start Gritting.	8.77kms
10	Grit, U42 to Knockdon Bridge, Stop Gritting.	2.54kms
11	Travel, turn at a safe and convenient location and return along the U42 , right into C1 , left into the U4 (Balbeg Road), Start Gritting.	5.19kms
12	Grit, U4 to Palmullan Bridge, Stop Gritting.	1.40kms
13		

Travel, turn at a safe and convenient location and return along <i>U4</i>, left into <i>C1</i>, right into <i>B741</i>, left into <i>U104</i> (Holehouse Road), Start Gritting.	4.49kms
14 Grit, <i>U104</i> to Glenhead Farm, Stop Gritting.	0.55kms
15 Travel, turn at a safe and convenient location and return along <i>U104</i>, right into <i>B741</i>, left into <i>U31</i> (Dyke Road), Start Gritting.	1.72kms
16 Grit, <i>U31</i>, right into <i>U68</i>, at junction with <i>B741</i>, Stop Gritting.	3.21kms
17 Travel, turn at a safe and convenient location and return along <i>U68</i>, right into <i>U43</i> (Knockgardner Road), Start Gritting.	1.31kms
18 Grit, <i>U43</i>, left into <i>U27</i> (Deil's Elbow Road), continue gritting to junction with <i>U66</i>, Stop Gritting.	13.38kms
19 Travel, turn at a safe and convenient location and return along <i>U27</i> to junction with <i>U12</i> (Blair Road), Start Gritting.	9.48kms
20 Grit, <i>U12</i> to Blair Farm, Stop Gritting.	1.05kms
21 Travel, turn at a safe and convenient location and return along <i>U12</i>, left into <i>U27</i>, to the junction with <i>U43</i>, Start Gritting.	2.19kms
22 Grit, left into the <i>U27</i> to the junction with <i>B741</i> at Cloyntie Toll, Stop Gritting.	2.14kms
23 Travel, turn at a safe and convenient location and return along <i>U27</i> to <i>U45</i> (Ladyburn Road), Start Gritting.	1.26kms
24 Grit, right into the <i>U45</i>, right into the <i>U16</i> (Burnton Road) and continue gritting to the junction with <i>B741</i>, Stop Gritting.	3.26kms
25 Travel, turn at a safe and convenient location and return along the <i>U16</i> to junction with the <i>U45</i>, Start Gritting.	1.49kms
26 Grit, right into <i>U45</i> to the junction with the <i>B741</i>, Stop Gritting.	0.89kms
27	

Travel, left into <i>B741</i> , left into the <i>U60</i> (Poundland Road), Start Gritting.	2.59kms
28 Grit, <i>U60</i> to Poundland Farm, Stop Gritting.	0.80kms
29 Travel, turn at a safe and convenient location and return along the <i>U60</i> , left into the <i>B741</i> and return to Depot. Route ends.	11.81kms
Total route length: 131.908kms. Total length gritted: 46.732kms (35%) Total length free travel: 85.176kms (65%)	

Grangestone Depot - Priority 3 Carriageway Gritting Route 2

1

Travel, leave depot and continue, via **B741** and **A77** to the junction of the **U64** (Shalloch Mill Road), **Start Gritting**.
6.82kms

2

Grit, the **U64** to the junction with **A714**, **Stop Gritting**.
1.03kms

3

Travel, right into **A714** to **U48** (Lendal Road), **Start Gritting**.
5.33kms

4

Grit, **U48** to junction with the **A77**, **Stop Gritting**.
8.87kms

5

Travel, left into **A77**, left into **U17** (Carlton Road), **Start Gritting**.
0.10kms

6

Grit, **U17** to the junction with the **B734**, **Stop Gritting**.
4.85kms

7

Travel, left into **B734**, right into **A714**, left into the **U52** (Muck Road), **Start Gritting**.
4.87kms

8

Grit, **U52** to junction with access road to Muck Farm, **Stop Gritting**.
5.67kms

9

Travel, turn at a safe and convenient location and return along **U52**, left into the **A714**, right into the **U103** (Drumskeoch Road), **Start Gritting**.
7.49kms

10

Grit, **U103** to end, **Stop Gritting**.
2.11kms

11

Travel, turn at a safe and convenient location and return along **U103**, right into the **A714**, continue through Barrhill, continue on **A714** to the junction with **U102** (Black Clauchrie Road), **Start Gritting**.
8.11kms

12

Grit, **U102** to end, **Stop Gritting**.
4.43kms

13

Travel, turn at a safe and convenient location and return along **U102**, right into the **A714**, left into the **B7027**, left into the **U28** (Dornal Road), **Start Gritting**.
13.78kms

14

Grit, U28 to end, Stop Gritting.

4.20kms

15

Travel, **turn at a safe and convenient location** and return along *U28*, right into *B7027*, left into *A714*, continue through Pinwherry, left into the *B734*, left into *C45* in Colmonell, left into *U26* (Dalreoch Road), **Start Gritting.**

25.61kms

16

Grit, U26 to Dalreoch Mains Farm, Stop Gritting.

2.01kms

17

Travel, **turn at a safe and convenient location** and return along the *U26*, left into *U9* (Bardrochat Road), **Start Gritting.**

1.83kms

18

Grit, U9 at cattle grid near access leading to East Reuchal Farm, Stop Gritting.

2.15kms

19

Travel, **turn at a safe and convenient location** and return along *U9*, left into *U26*, left into *C45*, right into *U59* (Polcardoch Road), **Start Gritting.**

6.32kms

20

Grit, U59 to Kirkholm Farm, Stop Gritting.

0.41kms

21

Travel, **turn at a safe and convenient location** and return along *U59* right into *C45*, left into *U51* (Mains of Tig Road), **Start Gritting.**

0.74kms

22

Grit, U51 to Mains of Tig Farm, Stop Gritting.

3.31kms

23

Travel, **turn at a safe and convenient location** and return along *U51*, left into *C45*, left into *U22* (Crailoch Road), **Start Gritting.**

4.47kms

24

Grit, U22 to Crailoch Farm, Stop Gritting.

1.39kms

25

Travel, **turn at a safe and convenient location** and return along *U22*, right into *U6* (Balkissock Road), **Start Gritting.**

1.14kms

26

Grit, U6 to Balkissock, Stop Gritting.

1.67kms

27

Travel, **turn at a safe and convenient location** and return along *U6*, right into *U22*, left into *C45*, left into *A77*,

left into *U1* (Auchairnie Road), **Start Gritting.**

5.93kms

28

Grit, *U1* to junction with Kilwhannel farm access road, **Stop Gritting.**

2.10kms

29

Travel, turn at a safe and convenient location and return along *U1*, left into *A77*, right into *U36* (Glendrishraig Road), **Start Gritting.**

6.33kms

30

Grit, *U36* to High Ballochdowan, **Stop Gritting.**

2.20kms

31

Travel, turn at a safe and convenient location and return along the *U36*, to junction with *U10* (Big Park Road), **Start Gritting.**

1.67kms

32

Grit, *U10*, right into *U7* (Ballantrae Mill Road), to junction with *A77*, **Stop Gritting.**

4.78kms

33

Travel, turn at a safe and convenient location and return along *U7* to junction with the *U10*, **Start Gritting.**

0.29kms

34

Grit, right into *U10*, left into *U29* (Downan Road), continue gritting at entrance to Dowanhill, **Stop Gritting.**

2.19kms

35

Travel, turn at a safe and convenient location and return along *U29*, to junction with *U10*, **Start Gritting.**

1.86kms

36

Grit, left into *U10* to junction with *A77*, **Stop Gritting.**

0.47kms

37

Travel, left into *A77*, left into *U113* (Bennane Road), **Start Gritting.**

4.03kms

38

Grit, *U113* to Bennane House, **Stop Gritting.**

0.29kms

39

Travel, turn at a safe and convenient location and return along *U113*, left into *A77* and return to Depot via *A77* and *B741*. Route ends.

20.88kms

Total route length: 175.768kms.

Total length gritted: 51.175kms (30%)

Total length free travel: 124.593kms (70%)

Grangestone Depot - Priority 3 Carriageway Gritting Route 3

1

Travel, leave depot and turn left into *B741* and left into *U46* (Ladywell Road), **Start Gritting.**
1.19kms

2

Grit, *U46* to Works Access on right side of the road, Stop Gritting. **0.28kms**

3

Travel, turn at a safe and convenient location and return along *U46*, left into *B741*, right onto *A77*, right into *U30* (Dunnymuck Road), **Start Gritting.** **5.73kms**

4

Grit, the *U30* to Dunnymuck Farm, Stop Gritting. **0.13kms**

5

Travel, turn at a safe and convenient location and return along *U30*, right into the *A77*, right into the *U49* (Littleton Glen Road), **Start Gritting.** **1.17kms**

6

Grit, the *U49*, right into the *U54* (McGownston Road), continue gritting to the *C44*, Stop Gritting.
4.17kms

7

Travel, left into the *C44*, right into the *U19* (Chapelton Road), **Start Gritting.** **0.65kms**

8

Grit, *U19*, left into the *U44* (Knoxhill Road), continue gritting to the *A77*, Stop Gritting.
4.16kms

9

Travel, turn at a safe and convenient location and return along the *U44*, right into the *U40* (High Park Road), Start Gritting.
0.10kms

10

Grit, *U40* across the *C44* to the junction with the *U49*, turn left, Stop Gritting. **3.90kms**

11

Travel, along the *U54*, across *C44*, into the *U53* (Mullocks Road), Start Gritting.

2.98kms

12

Grit, *U53* to junction with the *U62* (Roughneuk Road), right, Stop Gritting. **3.96kms**

13

Travel, *U62* to the junction with the *C29*. Turn at a safe and convenient location return into *U62*, Start Gritting.
1.88kms

14

Grit, *U62* to the junction with *U44*, Stop Gritting. **4.52kms**

15

Travel, right into *U44*, right into the *U38* (Hallowshean Road), Start Gritting. **0.27kms**

16

Grit, U38 to junction with the A77, right, Stop Gritting.

1.99kms

17

Travel, A77, right into the U69 (Wellholm Road), Start Gritting.

2.80kms

18

Grit, U69 to the junction with U38, right into U38, Stop Gritting.

2.81kms

19

Travel, via the U38, right into A77, right into the C29 at Maybole, right into the U2 (Auchencross Road), Start Gritting.

7.01kms

20

Grit, U2, right into U15 (Burncrooks Road), continue gritting U15 to end, Stop Gritting.

4.46kms

21

Travel, turn at a safe and convenient location and return along the U15 to junction with the U2, continue on U15, Start Grit

2.40kms

22

Grit, U15 to the junction with the C29, right, Stop Gritting.

0.39kms

23

Travel, turn right into the C29, left into the U3 (Bairdsmill Road), Start Gritting.

0.50kms

24

Grit, U3 to the junction with the B7023, right, Stop Gritting.

1.82kms

25

Travel, via the **B7023**, **C88** and **B741** then left into the **U34** (at Longhill on Garphar Road), **Start Gritting**.
3.48kms

26

Grit, U34 and continue gritting to junction with the **U67** (Tranew Road), **Stop Gritting**.
1.29kms

27

Travel, right into the **U67** to the junction with the **B741**. **Turn at a safe and convenient location** and return along the **U67**, **Start Gritting**.
0.61kms

28

Grit, U67 to the junction with the **C31**, **Stop Gritting**.
3.48kms

29

Travel, left into the **C31**, left into the **U58** (Parkfairn Road), **Start Gritting**.
1.15kms

30

Grit, U58 to the junction with the **B741**, right, **Stop Gritting**.
1.60kms

31

Travel, B741, right into the **C44**, left into the **U21** (Craighead Road at Drummuck), **Start Gritting**.
13.85kms

32

Grit, U21 to the junction with the **B741**, **Stop Gritting**.
3.31kms

33

Travel, right into the **B741** and return to Depot. Route ends.
4.30kms

Total route length: 92.794kms.
Total length gritted: 42.732kms (46%)
Total length free travel: 50.062kms (54%)



A partnership between East Ayrshire Council and South Ayrshire Council

