



Ayrshire Roads Alliance

Winter Service Plan

*For East Ayrshire and South Ayrshire
Councils*

2022/23



East Ayrshire Council
Comhairle Siorrachd Àir an Ear

south
AYRSHIRE
COUNCIL

INTRODUCTION

The Ayrshire Roads Alliance within the Department of Safer Communities is responsible for providing the winter service for East Ayrshire and South Ayrshire Councils. The remit includes:

- Establishing standards
- Establishing treatment priorities
- Day to day direction of operations
- Monitoring performance
- Liaison with adjoining Councils and Emergency Services

The Winter Service Plan was revised during the summer of 2015 to introduce the concepts and to follow the format provided in the code of practice 'Well Maintained Highways', which was updated in September 2013.

In addition, the Ayrshire Roads Alliance will follow advice from the SCOTS Winter Service Subgroup on the use and application of Appendix H: Winter Service issues.

There is additional and more detailed information available (within the Ayrshire Roads Alliance Quality Management System and the Severe Weather Operations Plan for resources involved with the management and implementation of this Winter Service Plan.)

| | | | |
|----------|-----------------------------|----------|------------|
| Document | Winter Service Plan 2022/23 | Revision | 1 |
| WINT-1 | Page 2 of 123 | Date | 02/11/2021 |

CONTENTS

| | |
|--|-------------------------------------|
| INTRODUCTION | 2 |
| CONTENTS | 3 |
| 1.0 Statement of Policies and Responsibilities..... | 5 |
| 1.1 Statutory Obligations and Policy | 5 |
| 1.2 Responsibilities..... | 5 |
| 1.3 Decision Making Process..... | 7 |
| 1.4 Arrangements with Adjacent Authorities | 8 |
| 1.5 Resilience Levels..... | 8 |
| 1.6 Potential Resilience Measures relating to COVID19 | 8 |
| 2.0 Quality..... | 9 |
| 2.1 Quality Management Regime..... | 9 |
| 2.2 Document Control Procedures..... | 9 |
| 2.3 Distribution of Documents..... | 9 |
| 2.4 Information Recording and Analysis..... | 9 |
| 2.5 Arrangements for Performance Monitoring and Updating | 10 |
| 3.0 Route Planning for Carriageway and Footway | 10 |
| 3.1 General..... | 10 |
| 3.2 Carriageways Routes for precautionary treatment | 11 |
| 3.3 Carriageway Routes for post treatment..... | 11 |
| 3.4 Carriageway Routes for snow clearance..... | 12 |
| 3.5 Footway Routes for Precautionary Treatment..... | 12 |
| 3.6 Footway Routes for Post Treatment..... | 12 |
| 3.7 Routes for cycle route treatment | 12 |
| 3.8 Response and Treatment Times for Carriageway Treatments | 12 |
| 3.9 Response and Treatment Times for Footway and Cycle Route Treatments..... | 13 |
| 3.10 Allocation of plant, vehicles, equipment, and materials to routes | 13 |
| 3.11 Location and maintenance of grit bins..... | 13 |
| 3.12 Community self-assistance | 13 |
| 4.0 Weather Prediction and Information..... | 14 |
| 4.1 Forecasting, Patrols, and other Decision Support Information..... | 14 |
| 4.2 Information to be provided by Forecaster..... | 14 |
| 4.3 Timing and distribution of information | Error! Bookmark not defined. |
| 4.4 Maintenance of ice detection equipment..... | 15 |
| 5.0 Organisational Arrangements and Personnel..... | 15 |
| 5.1 Organisation chart and employee responsibilities | 15 |
| 5.2 Employee duty schedules, rotas, and standby arrangements | 16 |
| 5.3 Additional Resources..... | 16 |
| 5.4 Training | 16 |
| 5.5 Health and Safety Procedures | 16 |
| 6.0 Plant, Vehicles and Equipment | 17 |
| 6.1 Plant, Vehicles and Equipment | 17 |
| 6.2 Location of Plant, Vehicles and Other Equipment | 17 |
| 6.3 Garaging, servicing and maintenance arrangements | 17 |
| 6.4 Contact and hire arrangements for Contract plant..... | 17 |
| 6.5 Calibration Procedures | 17 |
| 6.6 Fuel stocks and locations..... | 17 |

| | | | |
|----------|-----------------------------|----------|------------|
| Document | Winter Service Plan 2022/23 | Revision | 1 |
| WINT-1 | Page 3 of 123 | Date | 02/11/2021 |

| | | |
|-----|--|----|
| 7.0 | Salt and De-Icing Materials | 18 |
| 7.1 | Location and capacity of stocks for salt and other materials | 18 |
| 7.2 | Testing Arrangements..... | 18 |
| 7.3 | Loading Arrangements..... | 18 |
| 7.4 | Pattern of Spreading..... | 18 |
| 7.5 | Salt Spread Rates..... | 18 |
| 7.6 | Salt Purchasing Arrangements and Supplies | 19 |
| 8.0 | Operational Communications..... | 19 |
| 8.1 | Technical systems information..... | 19 |
| 8.2 | Reporting arrangements and protocols | 19 |
| 9.0 | Information and Publicity | 20 |
| 9.1 | Local Press and broadcast information | 20 |
| 9.2 | Publicity | 20 |
| 9.3 | Other Key Local Contact Information | 20 |
| 9.4 | Records | 21 |
| 9.5 | Responsibilities and Guidance for Providing Information | 21 |
| | Appendix 1 Winter Service Organisation Chart..... | 22 |
| | Appendix 2 Grit Bin Policy & Requests | 23 |
| | Appendix 3 Request to Site a Grit Bin..... | 24 |
| | Appendix 4 Priority 1 Carriageway Gritting Routes - East Ayrshire Council..... | 26 |
| | Appendix 5 Carriageway North/South Snow Routes - East Ayrshire Council..... | 46 |
| | Appendix 6 Priority 2 Carriageway Gritting Routes - East Ayrshire Council | 48 |
| | Appendix 7 Priority 3 Carriageway Gritting Routes - East Ayrshire Council..... | 50 |
| | Appendix 8 Priority 1 Carriageway Gritting Routes - South Ayrshire Council | 56 |
| | Appendix 9 Priority 2 Carriageway Gritting Routes - South Ayrshire Council..... | 72 |
| | Appendix 10 Priority 3 Carriageway Gritting Routes - South Ayrshire Council..... | 98 |

| | | | |
|----------|-----------------------------|----------|------------|
| Document | Winter Service Plan 2022/23 | Revision | 1 |
| WINT-1 | Page 4 of 123 | Date | 02/11/2021 |

1.0 Statement of Policies and Responsibilities

1.1 Statutory Obligations and Policy

- 1.1.1 East Ayrshire and South Ayrshire Council have a statutory obligation under Section 34 of the Roads (Scotland) Act 1984 to prevent snow and ice endangering the safe passage of pedestrian and vehicles over public roads in terms of the above legislation a 'road' includes carriageways, footways, and footpaths areas.
- 1.1.2 South and East Ayrshire Council's aim is to provide an effective and efficient Winter Service in accordance with 'Well Maintained Highways' and within the resources available to: -
- Allow the safe passage of vehicles and pedestrians
 - Minimise delays due to winter weather
 - Ensure operations are undertaken safely
- 1.1.3 The aim of the Winter Service Plan is to set out how the Winter Service will be provided within each Council roads network.

1.2 Responsibilities

- 1.2.1 The enabling and service delivery of the Winter Service is the responsibility of the Head of Service - Ayrshire Roads Alliance.
- 1.2.2 The Ayrshire Roads Alliance is responsible for the work involved in providing the Winter Service. These responsibilities include the following:
- Developing the Winter Service to cope with an 'average winter' but having the capability to be extended or adapted when winters are more severe or of a longer duration than average.
 - Production and distribution of the Winter Service Plan.
 - Review and update of the Severe Weather Operations Plan
 - Providing accurate and timely information to the East Ayrshire Risk Management Centre and South Ayrshire Monitoring Station.
 - Carrying out an annual review of the service and updating the Winter Service Plan where necessary.
 - Liaising with adjacent roads authorities in the preparation of the Winter Service Plan to ensure continuity of service across boundaries.
 - Providing a list of roads designated for priority treatment.
 - Providing a list of footways and pedestrian areas designated for priority treatment.
 - Providing a list of roads designated as strategic routes for snow clearing.
 - Providing decision-making charts, advice, and guidance for those involved in the Winter Service.
 - Liaising with the Winter Supervisors to provide help and advice to ensure the service is delivered in the most effective, efficient, and economical way, including establishing operational priorities during extreme weather conditions.
 - Arranging for weather forecasts, ice prediction reports and road and weather monitoring information to be available throughout the winter period.

| | | | |
|----------|-----------------------------|----------|------------|
| Document | Winter Service Plan 2022/23 | Revision | 1 |
| WINT-1 | Page 5 of 123 | Date | 02/11/2021 |

- Arranging for appropriate specialist vehicles and equipment to be available throughout the winter period.
- Arranging for supplies of salt to be available at the start of the overall winter period.
- Monitoring the salt usage and ensuring supplies are replenished to maintain an appropriate level of salt in the stockpile.
- Establish contact numbers for access to emergency services control rooms, public transport operators, local media, and the motoring organisations.
- Passing of factual information on road conditions to each Council's Communications Team as and when required.
- Monitoring all aspects of the Winter Service and providing information on performance indicators.
- Maintaining full and comprehensive records of all Winter Service activities.
- Directing all available resources.
- Liaising when necessary with the Road Weather Forecast Provider.
- Monitoring the weather forecasts and actual weather conditions.
- Monitoring actual road surface temperatures and road conditions.
- Assessing the requirement to carry out precautionary or post salting treatment or snow clearance on the network, deciding appropriate start times and rates of spread and arranging for the work to be carried out, monitoring effectiveness of treatments and amending instructions, when necessary, due to a change in conditions
- Assessing the need to carry out post salting or snow clearance of the remaining road network during prolonged spells of sub-zero temperatures, and ensuring the works are carried out when necessary and as resources permit.
- In the event of deteriorating conditions, notably major blockages to the primary route network and/or severe drifting snow to contact:
 - a) The Emergency Services Control Rooms. (Police, Ambulance, Fire)
 - b) Ayrshire Civil Contingency Team
 - c) Communications Team.
 - d) Chief Executive and/or other nominated Senior Officers.
- Maintaining a list of contractors with suitable plant and operatives for snow clearing purposes and hiring in such when necessary to do so.
- Liaising on operational matters when appropriate with the adjacent Local Authorities to ensure continuity of treatment across authority boundaries.
- Liaising when appropriate with the
- Emergency Services and Public Transport Operators.
- Providing accurate and timely information to the Risk Management Centre and South Ayrshire Monitoring Station.
- Ensuring the Transport workshops are notified of any vehicle faults and that they are repaired without delay.

| | | | |
|----------|-----------------------------|----------|------------|
| Document | Winter Service Plan 2022/23 | Revision | 1 |
| WINT-1 | Page 6 of 123 | Date | 02/11/2021 |

- Arranging with Transport workshops for appropriate staff to be available on 24 hour call out to deal with any serious mechanical breakdown(s).
- Checking and calibrating salt spreading equipment and weighbridges and retaining of the certificates.
- Ensuring all operatives receive adequate and appropriate training in Winter Service activities and those drivers are issued with 'route cards' to record details of the treatment times, etc.

1.3 Decision Making Process

- 1.3.1 The day to day routine operational decisions will be made by the Winter Controller using weather forecasts provided by Weather Services Provider and the road and weather monitoring data.
- 1.3.2 The Overall Winter Period shall be from 1st October until 15th May, with the Core Winter Period being from the fourth Monday of each October ending on the second Monday of April (these periods can be extended should conditions warrant).
- 1.3.3 On receipt of a weather forecast or update, the Winter Controller will reach a decision on action for the next 24 hours from one of the five following options:
- a) Pre-salting to commence immediately after the period of mobilisation.
 - b) Pre-salting to commence at a specified time (e.g. 1900 hours).
 - c) Treatment is likely - but start time cannot yet be determined.
 - d) Treatment is possible - conditions being monitored by patrol vehicles (marginal night).
 - e) No action planned (minimum forecast temperature + 1°C).
- 1.3.4 Only if treatment is planned the decision record will include the required salt spread rate. Any post salting or snow clearance subsequently required shall also be recorded. This decision and any updates will be distributed to appropriate roads personnel and stakeholders.
- 1.3.5 The Winter Decision Matrix is contained in the Severe Weather Operations Plan.
- 1.3.6 Post salting would be carried out under the following circumstances.
- a) On Priority 1 Routes where salt has been washed off due to rain.
 - b) Remaining roads may be treated by salting as determined by priority, progress, conditions, and resources.
- 1.3.7 Snow clearing operations will be undertaken across the network as conditions dictate.
- 1.3.8 When snow is forecast, the Priority 1 routes will be treated in accordance with the Treatment Matrix.
- 1.3.9 Two stages of snow clearing can be considered
- a) Light falls of undisturbed accumulation of snow reaching a depth of less than 10mm in depth. Normally be dealt with by one or more repeated applications of salt.

| | | | |
|----------|-----------------------------|----------|------------|
| Document | Winter Service Plan 2022/23 | Revision | 1 |
| WINT-1 | Page 7 of 123 | Date | 02/11/2021 |

- b) Moderate/Heavy falls of snow greater than 10mm in depth that may also be associated with drifting. These conditions may require the use of ploughs, specialised equipment and/or mechanical excavators in addition to salting. As ploughing may block junctions and side roads, arrangements will be made to remove any resulting accumulations of snow, as resources permit.
- 1.3.10 Normal priority (when resources permit) will be to clear the snow from Minimum Winter Network Routes (Snow Routes) then clear the remaining Priority 1 Routes before dealing with the Priority 2 and Priority 3 routes.
- 1.3.11 Under extreme conditions the priority will be to clear and treat the Minimum Winter Network Routes (Snow Routes).
- 1.4 Arrangements with Adjacent Authorities**
- 1.4.1 Reciprocal arrangements will be made with adjacent authorities to ensure the most efficient and consistent treatment of routes at boundaries, and co-operation in providing during winter service operations.
- 1.4.2 At the boundary of the Trunk Roads Network, Ayrshire Roads Alliance shall treat to the give way/ stop markings. The Trunk Road Operating Company shall treat the main trunk road carriageways, slip roads including lanes and splays at acceleration and deceleration lanes and splays.
- 1.5 Resilience Levels**
- 1.5.1 Resilience Levels for salt stocks shall be as follows.
- 1.5.2 Resilience for the Overall Winter Period shall be a minimum of 8 days at heavy salting levels, equating to 4400 tonnes. Heavy salting is calculated as two treatments of the Priority 1 network and one treatment of priority 2 networks.
- 1.5.3 Resilience for December and January shall be increased to a minimum of 15 days at heavy salting levels, equating to 8,150 tonnes.
- 1.5.4 If stock levels fall below 4,400 tonnes, consideration will be given to introducing salt conservation methods in accordance with the Salt Resilience Plan (Severe Weather Operations Plan), this may include restricting treatment to the Minimum Winter Network Routes (Snow Routes) and the use of salt/ grit mixes.
- 1.6 Potential Resilience Measures relating to COVID19**
- 1.6.1 Due to uncertainties concerning COVID19, Ayrshire Roads Alliance have had to prepare for potential changes in how we delivered our Winter Service for 20/21. The main area of concern was around the number of available drivers should one or more of our depots be affected. We delivered our full service.
- 1.6.2 Should our resources fall below the required level of drivers for 21/22, the drivers 'off shift' for each week will be required to concentrate on winter duties only, ensuring the required rest is taken to avoid fatigue and adherence to the Working Time Directive, unless emergency situations occur. They will enter the depot only for gritting duties and will minimise contact with colleagues and others out with the workplace wherever possible during this time.
- 1.6.3 Our 20 Priority 1 routes will be treated only and were we may have a shortage of drivers, some drivers will cover 2 routes each, therefore deviating from the 3hr treatment time to a 6hr treatment time.

| | | | |
|----------|-----------------------------|----------|------------|
| Document | Winter Service Plan 2022/23 | Revision | 1 |
| WINT-1 | Page 8 of 123 | Date | 02/11/2021 |

- 1.6.4 Other winter service activities shall continue as normal, with adherence to the COVID19 guidance being reinforced.
- 1.6.5 Where possible our Duty Supervisors will ensure the same driver/vehicle during any potential 'spike' and safe systems of work are followed with regards to cleaning of the vehicles.

2.0 Quality

2.1 Quality Management Regime

- 2.1.1 The Winter Service Plan is included in the Ayrshire Roads Alliance Quality System.
- 2.1.2 The Ayrshire Roads Alliance Quality System is externally audited and verified.

2.2 Document Control Procedures

- 2.2.1 All quality documents are controlled and held on a computerised document management control system and are available for viewing by all members of Ayrshire Roads Alliance staff.
- 2.2.2 The Winter Service Plan will be distributed as detailed in section 2.3.

2.3 Distribution of Documents

- 2.3.1 The Winter Service Plan is issued and made available as listed below
 - Operational Staff
 - Elected Members
 - Ayrshire Civil Contingencies Team
 - Neighbouring Councils
 - Emergency Services and Community Planning Partners
 - Ayrshire Shared Services Joint Committee
 - Other Council Departments and Services
 - Community Councils
 - Equality Forum Group

2.4 Information Recording and Analysis

- 2.4.1 The Winter Service is contained within the Quality System as one process which contains three main procedures for Winter Preparation, Winter Action and Operations.
- 2.4.2 Winter Preparation Process
 - Preparation of different categories of treatment routes
 - Training of personnel
 - Calibration of plant
 - Placing and maintaining of grit bins
 - Ordering an adequate supply of salt for the start of the overall Winter period.
 - Allowing for additional resources should they be required for extreme conditions.

| | | | |
|----------|-----------------------------|----------|------------|
| Document | Winter Service Plan 2022/23 | Revision | 1 |
| WINT-1 | Page 9 of 123 | Date | 02/11/2021 |

- Liaison with external and internal partners.
 - Winter Action & Operations Process
- 2.4.3 The decision-making process for the Winter Controller.
- Issuing of Instructions.
 - Distribution of Instructions.
 - Procedures for gritting and ploughing.
 - Response Times.
 - Monitoring and reporting of actions completed.
 - Maintaining an adequate supply of salt.
- 2.5 Arrangements for Performance Monitoring and Updating**
- 2.5.1 Performance Monitoring
- 2.5.2 Ayrshire Roads Alliance evaluates and compares the following 5 local key performance measures for each winter period: -
- Percentage of vehicles ready for winter by 18th October '21
 - Percentage of pre-salted routes completed within 3 hours target time
 - Route efficiency
 - Actual winter expenditure per kilometre of Carriageway/per kilometre of gritted route.
 - Tonnage of salt used
- 2.5.3 These performance measures are reported on a regular basis to the Ayrshire Shared Service Joint Committee.
- 2.5.4 In addition, Ayrshire Roads Alliance will submit an annual return to the Association for Public Service Excellence (APSE) on behalf of East and South Ayrshire Councils to compare Ayrshire Roads Alliance performance against other participating Councils.
- 2.5.5 The Winter Service Plan is reviewed annually and amended and updated before the 1st of October to include any revisions and changes to the service delivery.
- 2.5.6 The Quality System has been updated to the standard specified in ISO9001:2015 which includes the concept of monitoring and continuous improvement in line with the concepts of best value.

3.0 Route Planning for Carriageway and Footway

3.1 General

- 3.1.1 The pre and post salting routes of East and South Ayrshire are reviewed on an annual basis taking into account any alterations to the roads which are treated under the specified gritting criteria.
- 3.1.2 The main treatment options are as follows:
- Precautionary pre salting
 - Post salting

| | | | |
|----------|-----------------------------|----------|------------|
| Document | Winter Service Plan 2022/23 | Revision | 1 |
| WINT-1 | Page 10 of 123 | Date | 02/11/2021 |

- Snow routes
- 3.1.3 Routes have been devised to ensure efficient coverage within reasonable timescales.
- 3.1.4 Sets of Route Cards listing all precautionary salting routes are held electronically by the Head of Service, Ayrshire Roads Alliance.
- 3.1.5 Route descriptions for Priority 1 gritting route are available within Appendix 4 and Appendix 5 of this document.
- 3.2 Carriageways Routes for precautionary treatment**
 - 3.2.1 The following roads will be treated if it is forecast that ice or snow is likely to be present on road surfaces:
 - *Priority 1* – Strategic Routes and Main Distributor Routes, i.e. all 'A' class roads i.e. A70, A71, A77, A713, A735, A736, A759, A719, A714, A79 (This does not include for A77, A78, A76, M77 and a part of the A77 which are responsibility of the Transport Scotland). Safe and reliable access to emergency facilities including fire and rescue, police, ambulance services and hospitals. Other public services (Schools, health centres etc.) access to towns and villages, routes with high percentage of school traffic, designated public transport routes, access to main industrial and business centres.
 - 3.2.2 The duty Winter Controller has authority to amend agreed treatments should updated forecasts or conditions make this necessary. Where changes in the expected weather are forecast the duty Winter Controller will contact the Winter Supervisors and instruct them to take the necessary action. All such changes will be recorded in the electronic Vaisala Manager System.
 - 3.2.3 A review of gritting treatment hours was carried out. This incorporated treatments which take place between the hours of 2200hrs and 0500hrs Mon-Sun. In extreme conditions and where the forecast merits action, treatments can be actioned during these times. We will continue to have 24/7 standby cover. There is little benefit and high cost associated with treating roads when traffic is minimal, to be fully effective, de-icing requires the actions of vehicles to aid dispersal and to break up snow and ice.
- 3.3 Carriageway Routes for post treatment**
 - 3.3.1 Given the presence of ice or snow on roads and a forecast that these conditions will last for a period longer than it would take to treat the roads, appropriate treatment may take place to cover the following:
 - Priority 2 routes to be treated as resources permit when sub-zero temperatures are forecast to continue to last beyond midday, following completion of Priority 1 routes.
Priority 2 – Secondary distributor roads, including B class roads not included on Priority 1 routes, local distributor roads in residential areas.
 - Priority 3 Routes will be treated as resources permit when sub-zero conditions are forecast to continue over an extended period.
Priority 3 – Local access roads in residential and industrial areas, minor rural through roads and C class roads not included on priority 1 or priority 2 routes. Other roads with restricted access, cul-de-sac etc. not treated during post salting actions will be treated as resources permit utilizing available and suitable special plant.

| | | | |
|----------|-----------------------------|----------|------------|
| Document | Winter Service Plan 2022/23 | Revision | 1 |
| WINT-1 | Page 11 of 123 | Date | 02/11/2021 |

- Reported trouble spots not treated during precautionary treatment, or requests for assistance from emergency services or social services, as resources permit.

3.4 Carriageway Routes for snow clearance

3.4.1 At any time the priority is as follows:

- While snow is still falling, only the Minimum Winter Network Routes (Priority 1/Snow Routes) will be ploughed and treated in order to target resources and to keep these routes open for traffic. After snow has stopped falling but is lying, the remaining Priority 1 precautionary routes will be ploughed and treated before commencing Ploughing and treatment on Priority 2 and Priority 3 routes as resources and conditions permit.
- Additional resources to be called out to plough and treat Priority 2 and Priority routes after snow has stopped or when conditions warrant.

3.5 Footway Routes for Precautionary Treatment

3.5.1 The following footways will be considered by the Head of Service – Ayrshire Roads Alliance for treatment if it is forecast that ice or snow is likely to be present on road surfaces or where surfaces are wet, with temperatures forecast to remain below zero until 10.00 the next working day.

- Priority 1 - Urban shopping areas and precincts. And other areas or pedestrian concentration, and where applicable within the Priority 1 footway route safe and reliable footway access to emergency facilities including fire and rescue, police, ambulance services and hospitals, and other public services (Schools, health centres etc.).
- Priority 1 footways will only be treated as resources permit.

3.6 Footway Routes for Post Treatment

3.6.1 The following footways will be treated if it is forecast that ice or snow is likely to be present on road surfaces, with temperatures forecast to remain below zero over a prolonged period:

- *Priority 2* – Main access routes to town and village centres, special needs of disabled people or older people where critical footway access is required. (Residential homes etc.). Known problem areas including significant gradients. Exposed areas and other topological areas.
- It is not possible with the resources to treat all of the footways. Ayrshire Roads Alliance encourages self-help through the placing of Community grit bins and other grit bins throughout the roads network and when requested, resources to community groups.

3.7 Routes for cycle route treatment

3.7.1 Road cycle routes will be treated along with the adjacent carriageway when resources permit. No treatment will be carried out on off-road cycle routes.

3.8 Response and Treatment Times for Carriageway Treatments

3.8.1 When ice is predicted to be present during the morning peak traffic flow (prediction from the previous evening's forecast) precautionary salting of routes should be completed in 3 hours from the start of treatment and before 08:00 hours.

| | | | |
|----------|-----------------------------|----------|------------|
| Document | Winter Service Plan 2022/23 | Revision | 1 |
| WINT-1 | Page 12 of 123 | Date | 02/11/2021 |

- 3.8.2 For Emergency Salting and Ploughing the time between the decision to start treatment and the start of treatment will be no more than one hour except where pre- planned gritting is scheduled.

3.9 Response and Treatment Times for Footway and Cycle Route Treatments

- 3.9.1 Priority 1 footway routes should be completed in 5 hours from start of treatment and before 10:00 hours.
- 3.9.2 Priority 2 footway routes will be instructed for treatment as and when resources permit.
- 3.9.3 On-road Cycle Routes will be treated with the adjacent carriageway as resources permit.
- 3.9.4 Where resources permit ad hoc visual footway route inspections will be undertaken and footway treatments will commence on instruction.

3.10 Allocation of plant, vehicles, equipment, and materials to routes

- 3.10.1 The road network is serviced by three Roads Depots located at Galston, Coylton, and Girvan.
- 3.10.2 The necessary resources are stored and located within these depots to treat the designated networks carriageway routes.
- 3.10.3 The treatment of the networks footway routes shall be undertaken by Ayrshire Roads Alliance Internal Roads Maintenance Units, East Ayrshire Councils Outdoor Services and by private Contractors.

3.11 Location and maintenance of grit bins

- 3.11.1 Approximately 729 grit bins are sited locally within the network, for self- help by the public, these bins are topped up on a monthly basis as required, and as resources permit. The number of grit bins and their locations are continually under review and the current Grit bins locations are available as noted on Ayrshire Roads Alliance web page.
- 3.11.2 Grit bins will only be placed at locations where the criteria within the grit bin policy (Appendix 2) are met within the network, Community grit bins are available to encourage self- help and are located within town and village Centre's. These bins will be topped up on a monthly basis as required and as resources permit. The number of Community grit bins and their locations are presently under review and the current Community Grit bins locations are available on Ayrshire Roads Alliance web page.

3.12 Community self-assistance

- 3.12.1 To provide assistance and improve footway treatment resilience, over the last 6 years Ayrshire Roads Alliance have engaged with local Community Groups and others. We currently have 123 groups assisting with self-help footway gritting where we provide training, salt materials, footway spreading equipment and appropriate PPE for Groups to undertake treatments within their local Areas. Requests for these resources should be made in writing to the Head of Service.
- 3.12.2 ARA were the proud winners of the Highways Award for Winter Resilience in October November 2021.

| | | | |
|----------|-----------------------------|----------|------------|
| Document | Winter Service Plan 2022/23 | Revision | 1 |
| WINT-1 | Page 13 of 123 | Date | 02/11/2021 |

4.0 Weather Prediction and Information

4.1 Forecasting, Patrols, and other Decision Support Information

- 4.1.1 The support information for use in 'Decision Making' will usually be a combination of the Road Weather Forecast, Road and Weather Monitoring Data and Patrolling of the network.
- 4.1.2 Ayrshire Roads Alliance have contracted a Weather Service Provider to supply forecasts for the network each day over the period 1st October to 15th May.
- 4.1.3 The road weather forecasts are provided via a computer link to Ayrshire Roads Alliance during the normal working day or a portable computer to the Winter Controller out with normal hours.
- 4.1.4 Should any problems exist with the computer systems for obtaining the weather forecast alternative arrangements are in place
- 4.1.5 Four Ice Detection Outstations are installed near Corwar, Dalmellington, Dunlop and Fenwick. In addition the Alliance has access to a further 7 Outstations on the Trunk Road Network and access to information from the stations is available to the Winter Controllers.
- 4.1.6 The data available from the outstations, which can be presented in both graphic and tabular format include:
 - a) Road surface temperature
 - b) Deep road temperature
 - c) Air temperature
 - d) Wind speed and direction
 - e) Relative humidity
 - f) Precipitation.
 - g) Surface state (including level of salt present on road surface)
- 4.1.7 The Weather Service Provider has direct access to the information from these outstations, which Improves the accuracy of their forecasts.

4.2 Information to be provided by Forecaster

- 4.2.1 Specification of Forecasts Three forecasts are provided to Ayrshire Roads Alliance daily at 05.00, 11.00 and 17.00 (including weekends). Each forecast details the expected weather and road conditions for the forthcoming 36 hour period and contains the following information
 - a) Details and confidence of hazards from Ice, Hoar Frost, Snow, Fog, Strong Wind and Rain,
 - b) Wind speed and direction, road state, and snow depth accumulations.
 - c) A 2-10 day forecast of expected hazards of Ice, Hoar Frost, Snow, Fog, Strong Wind and Rain with comments on the outlook.
- 4.2.2 The Weather Service Provider carries out 24 hour monitoring of conditions and if these vary significantly they will contact the Winter Controller directly to advice of the change and when appropriate will issue an updated forecast.

| | | | |
|----------|-----------------------------|----------|------------|
| Document | Winter Service Plan 2022/23 | Revision | 1 |
| WINT-1 | Page 14 of 123 | Date | 02/11/2021 |

- 4.2.3 The Weather Service Provider provides a 24 hour consultancy service for the Winter Controller for advice and clarification of forecasts.

4.3 Timing and distribution of information

- 4.3.1 The Winter Controller will receive the weather forecast each day at 0500hrs, 1100hrs and 1700hrs and will assess and consult on the forecast and any other relevant data and decide what action to take, if any. An instruction will then be issued to the relevant staff and external bodies detailing the action proposed.
- 4.3.2 Each morning at 0500hrs the Winter Controller will assess the forecast and make a decision for the coming 12-24hr period. This will allow the Depot Supervisors to plan their works for the coming day starting at 0800hrs. At 1700hrs the Winter Controller will assess the latest forecast and make adjustments (if considered necessary) to the next 12-24hr period. All decisions are recorded with the electronic Vaisala Manager System and are available to relevant staff at all times.
- 4.3.3 If the weather changes out-with these times the Weather Service Provider will contact the Winter Controller directly with a revised forecast.
- 4.3.4 Any amendment made to previous instructions after an update from the Weather Forecast Provider, either by phone or during the evening update will be passed to the Winter Supervisors immediately and the appropriate records updated.

4.4 Maintenance of ice detection equipment

- 4.4.1 Maintenance and service arrangements are in place for outstations and the appropriate repairs.

5.0 Organisational Arrangements and Personnel

5.1 Organisation chart and employee responsibilities

- 5.1.1 The organisation of staff for Winter Service is shown on Appendix 1.
- 5.1.2 Employee Responsibilities
- 5.1.3 The Winter Controller is responsible for monitoring the road and weather conditions, for reaching an appropriate decision on treatment of the network and informing Winter Supervisors and others responsible for overseeing the works and recording the decision.
- 5.1.4 The Winter Supervisor is responsible for utilising and managing effectively all resources under his control i.e. labour, plant and materials to effect swift treatment of the road network. He/she will also complete all relevant paperwork timeously and update and record any alterations to decisions made.
- 5.1.5 The Depot Management Teams will ensure adequate resources are available for the supervisor to undertake his duties efficiently with regard to performance indicators.
- 5.1.6 The Winter Service Operatives are responsible for undertaking gritting duties in a safe and efficient manner. He/she shall complete all relevant paperwork for submission to the Winter Supervisor.
- 5.1.7 All personnel involved in the Winter Service will acquaint themselves of the duties, responsibilities and working procedures necessary for them to carry out their tasks in an effective and efficient manner.

| | | | |
|----------|-----------------------------|----------|------------|
| Document | Winter Service Plan 2022/23 | Revision | 1 |
| WINT-1 | Page 15 of 123 | Date | 02/11/2021 |

5.1.8 The contact details and numbers are listed below.

- a) During Normal Working Hours: Risk Management Centre 03457 240000
Ayrshire Roads Alliance 01563 503160
South Ayrshire Monitoring Station 0300 123 0900
- b) Out with normal working hours Risk Management Centre 03457 24 0000
South Ayrshire Monitoring Station 0300 123 0900

5.2 Employee duty schedules, rotas, and standby arrangements

- 5.2.1 Special arrangements will be made to ensure the availability of trained and competent operatives and supervisory staff for the Overall Winter Period
- 5.2.2 A weekly rota system is in operation for the Winter Controllers, Winter Supervisors and Winter Service Operatives.

5.3 Additional Resources

- 5.3.1 During severe weather conditions the Head of Service - Ayrshire Roads Alliance may augment resources from other East Ayrshire Council Departments and/or private contractors using the externally procured Winter Maintenance Assistance Contract.
- 5.3.2 Labour rates will be agreed with these departments and interested private contractors prior to the onset of the winter period.
- 5.3.3 All contractors will supply a list of contact numbers to provide when available resources, on a 24 hours a day and 7 days a week basis.
- 5.3.4 Contractors will attend a Winter Service Presentation in all aspects of Health and Safety in respect to the winter service operations before being accepted as suitable service providers.

5.4 Training

- 5.4.1 Winter Controllers and Winter Supervisors will undertake Forecast and Treatment training as provided by the Weather Service Provider.
- 5.4.2 Winter Supervisors and Winter Service Operatives will receive training on all aspects of their duties including a familiarization exercise with all plant and procedures before the onset of the Overall Winter Period.
- 5.4.3 All Winter Service Operatives will either have an SVQ certificate in Winter Maintenance or be working towards achieving one.

5.5 Health and Safety Procedures

- 5.5.1 The Head of Service - Ayrshire Roads Alliance is responsible for the Health, Safety and Welfare for staff.
- 5.5.2 During winter service operations, drivers/ operatives must adhere to the following health and safety documentation:
 - East Ayrshire Council Health and Safety Policy
 - Departmental Health and Safety Policy Statement
 - Health, Safety and Welfare at Work Employee Handbook
 - Activity/Risk Assessments for Individual Activities
 - Compliance with EAC Health, Safety and Welfare standards.

| | | | |
|----------|-----------------------------|----------|------------|
| Document | Winter Service Plan 2022/23 | Revision | 1 |
| WINT-1 | Page 16 of 123 | Date | 02/11/2021 |

6.0 Plant, Vehicles and Equipment

6.1 Plant, Vehicles and Equipment

- 6.1.1 The availability of vehicles and ancillary equipment is detailed in the Severe Weather Operations Plan.
- 6.1.2 The current fleet replacement program will ensure that Winter Service obligations can be met. Programmed repairs and servicing to the fleet will be carried out during the summer months. The remainder of the fleet will be inspected and serviced as per the Fleet Management Inspection and Servicing Schedule.
- 6.1.3 Global Positioning System (GPS) tracking equipment is installed in vehicles to provide accurate control of gritting and to establish accurate treatment records.

6.2 Location of Plant, Vehicles and Other Equipment

- 6.2.1 Ayrshire Roads Alliance vehicles will operate from the three Road Depots located at Galston, Coylton, and Girvan.

6.3 Garaging, servicing and maintenance arrangements

- 6.3.1 Mechanics will be available on an out-of-hours rota to maintain and repair the dedicated salting vehicles and equipment.

6.4 Contact and hire arrangements for Contract plant

- 6.4.1 Contract and hire companies on the East Ayrshire framework contracts will be solely hired. Only in extreme weather and emergencies conditions will other private contract and hire companies be considered.
- 6.4.2 During severe weather conditions the Head of Service - Ayrshire Roads Alliance may increase resources from other East Ayrshire Council Departments and private contractors.

6.5 Calibration Procedures

- 6.5.1 Pre-winter checks and calibration on all vehicles, plant and equipment, used by Ayrshire Roads Alliance for Winter Service provision will be carried out by the 1st October and confirmation of their readiness to the Head of Service - Ayrshire Roads Alliance will be made by the Operations Manager. An additional calibration for winter vehicles will be undertaken during mid-season and before 31st January. Transport Services will ensure that the controls of all spreading equipment are calibrated and clearly marked for specified rates of spread up to a maximum of 40g/m².
- 6.5.2 Salt is the principal de-icing agent used in the Roads Network and should be supplied in compliance with BS3247 (2011).
- 6.5.3 The original copies of road salt test certificates, weighbridge certificates and vehicle and equipment calibration shall be kept as part of the Ayrshire Roads Alliance Quality System to allow both internal and external auditing.

6.6 Fuel stocks and locations

| | | | |
|----------|-----------------------------|----------|------------|
| Document | Winter Service Plan 2022/23 | Revision | 1 |
| WINT-1 | Page 17 of 123 | Date | 02/11/2021 |

- 6.6.1 Fuel stocks for the dedicated salt spreading and other vehicles being used for winter maintenance operations are provided at Galston Depot, Coylton Depot, Girvan Depot and Transport Depot, Crookedholm. The vehicles will remain topped up ready for immediate use. Standard East Ayrshire Council fuelling arrangements apply. Fuel stocks are remotely monitored by Transport Services on a regular basis and orders placed to ensure fuel resilience during extreme weather conditions.

7.0 Salt and De-Icing Materials

7.1 Location and capacity of stocks for salt and other materials

- 7.1.1 Salt will be held in salt barns at Galston Depot, and Coylton Depot and externally stored at Girvan Depot.
- 7.1.2 The combined quantity of salt held in stock at the start of October will be a minimum of 12,000 tonnes. The minimum stock level will be 4,400 tonnes, rising to 8,1500 tonnes in December and January (to cover the holiday period) based on level of resilience as recommended in the United Kingdom Roads Liaison Group (UKRLG) review of February 2009.
- 7.1.3 Calibrated weighbridge systems for stock control and salt usage purposes, are available at the three Roads Depots.
- 7.1.4 The depots will supply regular reports on salt usage to the Operations Manager who will monitor usage and place supplementary orders for salt as required.

7.2 Testing Arrangements

- 7.2.1 Salt for use during winter will meet the requirements of BS 3247 'Salt for Spreading – Coarse Rock Salt'. On request of the Head of Service – Ayrshire Roads Alliance, salt materials will be tested when delivered to confirm compliance with the specification. An additional mid- season testing of depot salt materials will be undertaken.

7.3 Loading Arrangements

- 7.3.1 Depot Managers are responsible for ensuring a loading shovel is available for loading the salting vehicles. A 'backup unit', in case of breakdown of the primary loading shovel should be available at the depot at all times during the Overall Winter Period.

7.4 Pattern of Spreading

- 7.4.1 The gritters are to be set to salt a width of carriageway which will be both lanes of single carriageways or both lanes of one side of a dual carriageway.
- 7.4.2 The gritter will generally travel in the left-hand lane and the spreading pattern will be set to cover both lanes unless multiple passes are required on a wide one-way road.

7.5 Salt Spread Rates

- 7.5.1 The variable nature of winter conditions makes it difficult to define exact treatments and salt applications. Guidance on appropriate spread rates is given in the winter treatment matrix in the Severe Weather Operations Plan.

| | | | |
|----------|-----------------------------|----------|------------|
| Document | Winter Service Plan 2022/23 | Revision | 1 |
| WINT-1 | Page 18 of 123 | Date | 02/11/2021 |

- 7.5.2 Sustained low temperatures occur only rarely. In this event however, account will be taken of the need to increase the rate of spread of salt. Below -11°C the action of salt is ineffective and other measures will be required e.g. introducing salt/grit mixtures.

7.6 Salt Purchasing Arrangements and Supplies

- 7.6.1 Ayrshire Roads Alliance is a member of the Scotland Excel consortium of local authorities for the purchase of winter salt. The tender includes for the main delivery of salt to the three Roads Depot Facilities before the start of winter and also includes for further deliveries of salt, upon request, to replenish the stockpiles as necessary.
- 7.6.2 Other Council Departments
- 7.6.3 Other Council Services and Stakeholders must make their own provision for treatment of areas out with the limits of the public road network, which are not the responsibility of the Ayrshire Roads Alliance.
- 7.6.4 Supply of salt to others
- 7.6.5 No salt purchased by Ayrshire Roads Alliance will be available for purchase by external parties.

8.0 Operational Communications

8.1 Technical systems information

- 8.1.1 Good communications are essential to ensure speedy and effective response to winter conditions.
- 8.1.2 The Winter Controllers and Winter Supervisors will be issued with mobile phones with access to the internet and internal email systems.
- 8.1.3 Treatment plans and timings, ongoing actions, alterations to plans and salt usage will be recorded within electronic Vaisala Manager system. This web- based system will be accessible by all Winter Controllers and Supervisors. All information is archived by the software supplier and is held remote from the Council network.
- 8.1.4 During salting and snow clearance operations each Winter Operative has access to a mobile phone to maintain contact with Winter Supervisors and the operations depot.
- 8.1.5 All Vehicles are fitted with a Tracker and GPS system which allows the sections of road which have been treated to be clearly identified along with a time of treatment.

8.2 Reporting arrangements and protocols

- 8.2.1 The Winter Controller will report the 'Daily Decision' to the appropriate roads personnel and stakeholders as soon as possible after it has been reached.
- 8.2.2 The standard method of distributing the information will be via electronic Vaisala Manager system.
- 8.2.3 On request, the Winter Supervisor will prepare a daily report on the previous 24 hour road conditions and treatments, any ongoing treatments and salt usage for the Head of Service - Ayrshire Roads Alliance. The report will be required by 0845 hours daily Monday – Friday.
- 8.2.4 The Winter Supervisors will record details of salt usage via the electronic Vaisala Manager system and supply separate information regarding vehicle, equipment and plant breakdowns and repair actions taken.

| | | | |
|----------|-----------------------------|----------|------------|
| Document | Winter Service Plan 2022/23 | Revision | 1 |
| WINT-1 | Page 19 of 123 | Date | 02/11/2021 |

- 8.2.5 The Winter Supervisors will report details such as all additional plant and labour etc., hired from other Departments or Contractors, as soon as practical, to the Winter Controller.
- 8.2.6 During prolonged spells of severe conditions a decision will be made whether to set up a manned 24 hour control centre. This operational centre will be based at Gauchalland Depot. When required a Strategic Centre will be based at the Risk Management Centre who can as required liaise with South Ayrshire Monitoring Station. Throughout the treatment period, Winter Supervisors will continue to report and update to the Winter Controller on operational progress and actions taken during snow clearing operations and dealing with prolonged spells of ice.

9.0 Information and Publicity

9.1 Local Press and broadcast information

- 9.1.1 It is important that the general public is aware of and understands Ayrshire Roads Alliance approach to the Winter Service. Publicity is to be given before the beginning of the Core Winter Period describing the level of service provision and contact points.
- 9.1.2 During the Overall Winter Period and particularly during prolonged spells of snow and ice information will be made available to the public by the Communications Team via
 - a) Press releases
 - b) Local Radio Stations
 - c) East and South Ayrshire Intranet / Web Site
 - d) Motoring organizations
 - e) The Head of Service - Ayrshire Roads Alliance is authorised to respond to the Press, Radio and Television on matters relating to local road conditions.

9.2 Publicity

- 9.2.1 General advice and information for the public concerning the Winter Service will be catered for by publishing a Winter Advisory leaflet which will be available to the public via Ayrshire Roads Alliance and at selected locations throughout the Roads Network, such as libraries etc.

9.3 Other Key Local Contact Information

- 9.3.1 For information only The Head of Service - Ayrshire Roads Alliance will inform the Police Force Control and Ayrshire Civil Contingency team when snowfalls in excess of 30mm are predicted.
- 9.3.2 Reports from the Police or Risk Management Centre or South Ayrshire Monitoring Station of dangerous road conditions will be acted on as soon as practicable, when resources are available.
- 9.3.3 The Head of Service - Ayrshire Roads Alliance will consult the Police and advice the Risk Management Centre and South Ayrshire Monitoring Station when any road is closed due to winter weather conditions.

| | | | |
|----------|-----------------------------|----------|------------|
| Document | Winter Service Plan 2022/23 | Revision | 1 |
| WINT-1 | Page 20 of 123 | Date | 02/11/2021 |

9.3.4 The Risk Management Centre and South Ayrshire Monitoring Station are responsible for dealing with the general public's telephone inquiries regarding the Winter Service. The Risk Management Centre has access to electronic Vaisala Manager system and other key information regarding winter service operations to enable an efficient response to public enquiries.

9.3.5 Risk Management Centre is in operation 24 hours a day, 7 days a week, and can be contacted on 0345 724 0000. South Ayrshire Monitoring Station is in operation 24 hours a day, 7 days a week, and can be contacted on 0300 123 0900

9.4 Records

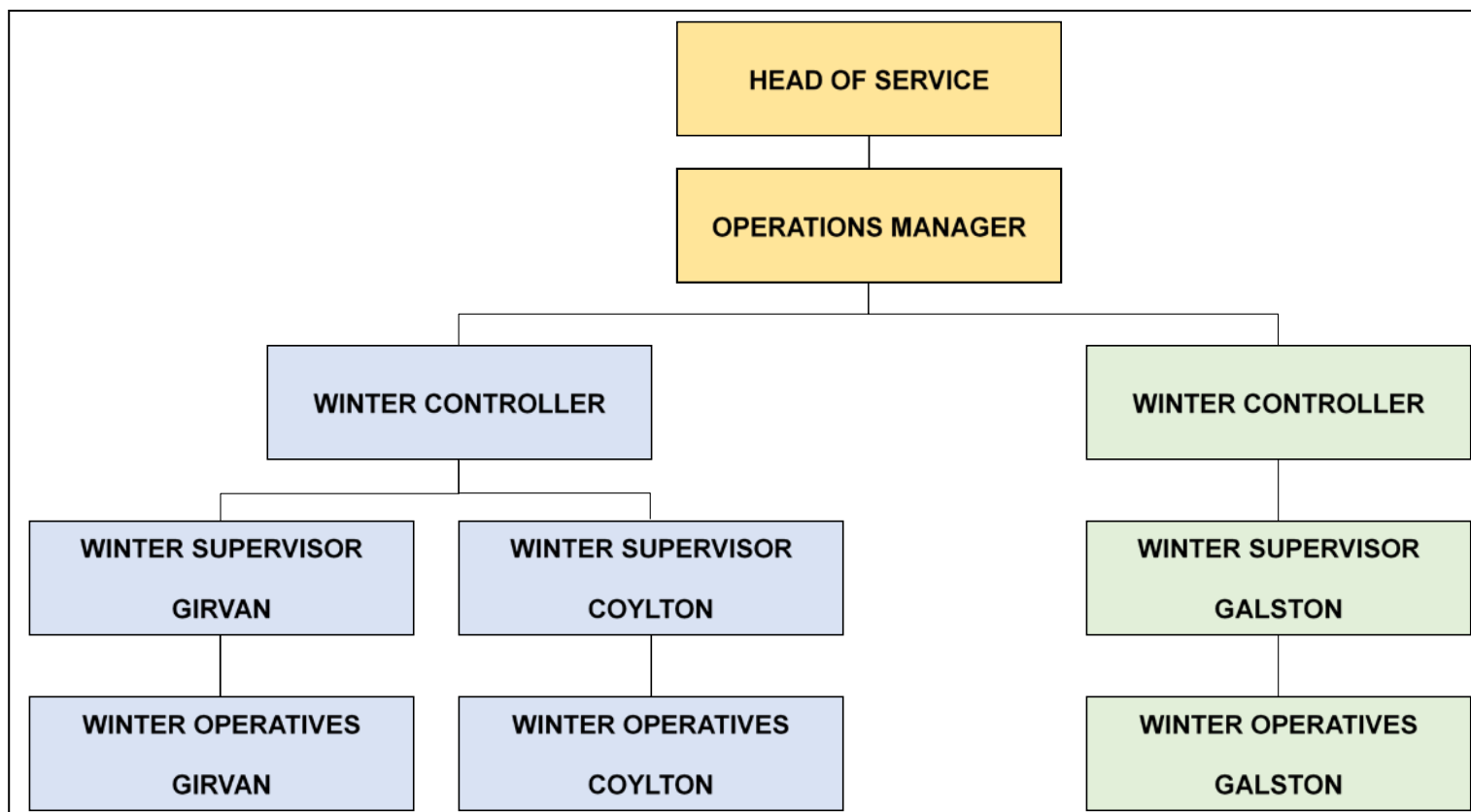
9.4.1 Records will be retained by Ayrshire Roads Alliance for 3 years and retained in archives for a further 7 years.

9.5 Responsibilities and Guidance for Providing Information

9.5.1 The Head of Service - Ayrshire Roads Alliance is responsible for guidance of the information to be supplied.

| | | | |
|----------|-----------------------------|----------|------------|
| Document | Winter Service Plan 2022/23 | Revision | 1 |
| WINT-1 | Page 21 of 123 | Date | 02/11/2021 |

Appendix 1 Winter Service Organisation Chart



| | | | |
|----------|-----------------------------|----------|------------|
| Document | Winter Service Plan 2022/23 | Revision | 1 |
| WINT-1 | Page 22 of 123 | Date | 02/11/2021 |

Appendix 2 Grit Bin Policy & Requests

- 1) Ayrshire Roads Alliance shall provide grit bins for self-help by members of the public. These shall be sited locally in accordance with this policy.
- 2) The location of Community grit bins and other grit bins will be recorded in an electronic database and are available on the Ayrshire Roads Alliance website.
- 3) Grit bins shall only be located where the following criteria are met:
 - a) The location is not on a precautionary carriageway route;
 - b) The gradient is greater than 1 in 15, or at a junction with a known history of accidents;
 - c) The location shall not obstruct the passage of pedestrians, a minimum of 1.5m clearance on the footway is required;
 - d) The location shall not obstruct sight lines;
 - e) The location is not within 200m of another grit bin location.
 - f) The location is within an urban area.
 - g) The location is within the boundary of the public road. The Ayrshire Roads Alliance will not provide grit bins in private areas or car parks for internal use by either the Council or any other public or private property such as schools, parks, hospitals, old people's home etc. unless a service level agreement is in place.
- 4) Grit bins will only be located where they can be filled from a lorry. The grit bins shall be replenished at the start of the Winter Period and on a monthly cycle during the Winter Period, as resources permit.
- 5) Grit bins will generally be left in place during the summer months, unless there is a history of vandalism at a particular location.
- 6) Requests for salt bins must be in writing using the application form which is also available to download from the Ayrshire Roads Alliance website.

A request will not be accepted unless a location to site the grit bin has been agreed. Therefore, even if the criterion for locating a grit bin is met, none will be provided if the adjacent residents cannot agree a position.

Appendix 3 Request to Site a Grit Bin

1 Proposed Location

1.1 Street Name _____

1.2 Location _____

2 Checklist

| | Yes | No | | Yes | No | Roads Check |
|---|-----|----|--------------------------------------|-----|----|-------------|
| Steep Gradient | | | Location within Urban Area | | | |
| Footway Wider than 1.8m | | | Location on Public Road | | | |
| Location out with junction visibility splay | | | More than 200m from nearest grit bin | | | |

3 Application

This application is submitted on behalf of

Organisation _____

Name _____

Address _____

Date _____

Request Granted: Yes ☐ No ☐

Reason for Refusal (if applicable) _____

Instruction issued to provide grit bin Yes ☐ No ☐ Date _____

Signed _____

Neighbour Notification

The following neighbours have been consulted and have no objections to a grit bin being placed at this location.

| Name | Address | Date | Agreement Y/N | Signed |
|------|---------|------|------------------|--------|
| | | | | |
| | | | | |
| | | | | |
| | | | | |
| | | | | |

Appendix 4 Priority 1 Carriageway Gritting Routes – East Ayrshire Council

Gauchalland Depot in Galston operates eight Priority 1 Carriageway gritting routes, mainly but not exclusively, confined to the north of the Council area; and includes the major towns of Kilmarnock and Cumnock.

Meadowhead Depot in Coylton operates two of the eight Priority 1 Carriageway gritting routes for the East Ayrshire area, mainly in the south of the Council area; and includes the major towns of Dalmellington and New Cumnock.

Method

Acting on advice received from the Council's weather service provider, Priority 1 Carriageway routes will receive precautionary treatment prior to the onset of frost / ice.

Included within the Priority 1 Carriageway routes are all A class and B class roads and strategic C class and unclassified roads.

Roads which meet the Council's criteria of precautionary treatment applied to a minimum of one road servicing council schools and emergency service depots, plus roads servicing high concentrations of employment, commercial outlets and densely populated residential areas and other roads of strategic importance are also included.

The exception to this arrangement is when the Council's weather service provider advises that there is no risk of hazardous winter road conditions in any of the two climatic domains. In this event altered routes which exclude roads in a particular climatic domain are used.

A small number of roads within residential areas may be partly treated in order to optimise a predetermined routing system.

Gauchalland Depot – Priority 1 Carriageway Gritting Route 1 EAST AYRSHIRE COUNCIL

| Town /Village | Road Number | Description |
|------------------------|--------------------|--|
| Galston | A719 | A719 from Depot to Brewlands St Galston |
| Galston | - | Bridge St Galston Polwarth St Galston |
| - | A71 | A71 Roundabout |
| | A719 | A719 to Moscow A719 to Waterside A719 to A77 |
| | A77 | A77 to B764 Eaglesham Moor Rd |
| | A719 | A77 from junction A719 to B778 |
| | B778 | B778 to Stewarton |
| Stewarton | - | Loudoun St Stewarton Holm St Stewarton Vennal St Stewarton Rigg Rd Stewarton |
| | A735 | A735 Dunlop Rd |
| | | Clerkland Rd |
| | A735 | A735 to Dunlop |
| | A735 | A735 Lugton |
| | A735 | A730 Junction |
| Dunlop | - | Allanvale Dunlop Kirkland Rd Dunlop Main St Dunlop Newmill Road Dunlop C7 Dunlop Kirkland Rd Dunlop Dunlop Junction on B706 A736 Junction |
| Stewarton | B778 | B778 to Stewarton Dalry Rd Stewarton Standalane to junction Lainshaw St Stewarton |
| | A735 | A735 to B769 B769 to Dykehead |
| | C20 | C20 Irvine Rd |
| Crosshouse to Gatehead | B751 | B751 Sunnyside B751 Crosshouse B751 Gatehead |

| Gauchalland Depot – Priority 1 Carriageway Gritting Route 1 EAST AYRSHIRE COUNCIL (Continued) | | |
|--|----------------|---|
| Town /Village | Road Number | Description |
| | A759 | A759 to B7064 Junction A759 Dundonald Road Dundonald Rd to junction at st marnock St Access to Crosshouse Nursery (Annandale Gardens) Loudoun Academy Car Park (morning patrol) |
| | | Return to depot |

| Gauchalland Depot - Priority 1 Carriageway Gritting Route 2 EAST AYRSHIRE COUNCIL | | |
|---|-------------|---|
| Town /Village | Road Number | Description |
| Kilmarnock | A735 | A735 Queens Drive Kilmarnock Asda Roundabout Kilmarnock Victoria Roundabout Kilmarnock Wellbeck St Kilmarnock Old Mill Rd Kilmarnock Fowlds St Kilmarnock Kings St Kilmarnock St Marnock St Kilmarnock John Finnie St Kilmarnock West George St Kilmarnock Portland St Kilmarnock Witch Rd Kilmarnock Hill St Kilmarnock Kilmaurs Road to A735 through Kilmaurs to Main St Stewarton |
| Stewarton | | Main St Stewarton B769 Lainshaw St Stewarton Main St Stewarton High St Stewarton Dean St Stewarton Old Glasgow Rd Stewarton Windy-Yett EAC boundary |
| | U24 | Cairn Road (U24) |
| | C108 | C108 to Fullwood C108 to Newmill House Junction C7 |
| | C7 C7 | C7 to Neilston Boundary C7 to Clerkland Road return to C7 A735 Junction |
| Stewarton | | Lamberton Rd Ravenscraig Rd Kilwinning Rd Rigghead Rd Braemore Rd Kirkmuir Drive Kingaussie Avenue Elgin Avenue Kinloch Avenue junction of Dalry Rd Sim St |

**Gauchalland Depot - Priority 1 Carriageway Gritting Route 2 EAST AYRSHIRE COUNCIL
Continued**

| Town /Village | Road Number | Description |
|----------------------|------------------------|---|
| | | Lothian Rd Crusader Crescent David Dale Avenue Cutsburn Rd Pokelly Place Cutsburn Rd Jubilee Drve Cairnduff Place School Robertland Rigg Old Mill View Bowes Rigg Alisa View Junction Dunlop St New St Avenue St Springwell Place Bridgend |
| | C117 | C117 to B751 Junction C117 to A735 |
| Kilmarnock | | John Walker Drive Dean Lane High St |
| | | Bellfield Roundabout slip and off slip on to A71 Riccarton Road Avenue Square morning patrol Stewarton Car Park & Ride morning patrol |
| | | Return to Depot |

| Gauchalland Depot - Priority 1 Carriageway Gritting Route 3 | | |
|---|-------------|--|
| Town /Village | Road Number | Description |
| Hurlford | B7037 | B7037 to Hurlford Cross A71 Riccarton Road to Bellfield Interchange |
| Kilmarnock | B7038 | Hurlford Rd to junction Carron Avenue Hurlford Rd Campbell St roundabout B7038 Campbell St Ayr Rd Spittallhill Farm entrance Campbell St Low Glencairn St West Shaw St McClelland Drive South Hamilton St Portland Rd Irvine Road B7081 junction of Munro Avenue Western Rd Roundabout at junction of Hill St Western Rd Bonnyton Rd Bonnyton Rd C24 West Langlands St Green St Hill St Witch Rd Western Rd B7064 Glasgow Rd B7038 Roundabout Southcraig Avenue Roundabout at Flotta Place Glasgow Rd Dalmusternock Roundabout Fenwick South Roundabout |
| | B7061 | |
| Fenwick | | Main Road Fenwick B778 Stewarton Rd B778 to Roundabout A77 junction |

| AYRSHIRE ROADS ALLIANCE EAST AYRSHIRE COUNCIL AREA | | |
|--|-------------|--|
| Town /Village | Road Number | Description |
| | B751 | B751 to Kilmaurs |
| | C75 | C75 Kirkton Road (morning) |
| | | Creeshaugh Rd (morning) |
| Kilmarnock | | Kilmaurs Rd Altonhill Avenue Kilmaurs Rd Tourhill Rd Onthank Drive junction Onthank Drive Meiklewood Rd junction Meiklewood Rd Craufurdland Rd junction Craufurdland Rd Jura Rd Inchmurrin Rd Fetlar Drive Benbecula Rd Cumbrae Drive Davaar Drive Inchmurrin Drive Western Rd Hill St Garden St Soulis St Union St Wellington St Dean St Beansburn Glasgow Rd Inchmurrin Drive Jura Rd Craufurdland Rd Western Rd Hareshaw Drive Meiklewood Rs Amlaird Rd Wardneuk Drive Hareshaw Gardens Wardneuk Drive |

AYRSHIRE ROADS ALLIANCE EAST AYRSHIRE COUNCIL AREA

| Town /Village | Road Number | Description |
|----------------------|------------------------|--|
| Kilmarnock | | Western Rd junction Wardneuk Drive Onthank Drive junction Meiklewood Rd Kirkton Rd Tourhill Rd Bus terminus junction Onthank Drive Knockinlaw Rd Western Rd Inellan Drive Campbeltown Drive Dean Rd South Dean Rd B7082 Grassyards Rd Roundabout exit Strawberry Bank Dean Lane Grassyards Rd B7082 to Junction A719 Return to depot Waterside St Car Park (morning) Foregate North (morning) Foregate South (morning) Portland St Car Parks (morning) Onthank PS (morning) Kirkstyle PS (morning) |

| Gauchalland Depot - Priority 1 Carriageway Gritting Route 4 EAST AYRSHIRE COUNCIL | | |
|---|-------------|--|
| Town /Village | Road Number | Description |
| Galston | A719 | Gauchalland Depot A719 Orchard St Titchfield St |
| | A71 | A71 junction A71 roundabout A71 Newmilns A71 Darvel A71 Stoneyford Farm |
| Darvel | | Kirkland Rd Patterson Terrace Hutchinson Drive Campbell St East Campbell St Burn Rd East Main St Jamieson Rd to Primary School gates Jamieson Rd to East Main St A71 to Fleming St Fleming St Edith St Dublin Rd to A71 |
| Newmilns | | Mill Rd Ladeside Greenhead Greenside East Strand Campbell St West Campbell St King St A71 junction High St Drygate St Hillside Place U32 Borebrae U32 Huggincraig Rd Clearmount Avenue Mair St Bridgend Brown St Windyhill Rd Nelson St |

| Gauchalland Depot - Priority 1 Carriageway Gritting Route 4 EAST AYRSHIRE COUNCIL (Continued) | | |
|--|-------------|---|
| Town /Village | Road Number | Description |
| Galston | | Wallace St |
| | B7037 | To B743 |
| Mauchline | B743 | To Mauchline Cross Jean Armour Drive Carrick View Beechwood Rd |
| | C35 | C35 Tarbolton Rd |
| | B744 | To A719 |
| Galston | | Cross St Riverside Rd Western Rd Meadowside Rd Glebe Rd Cemetery Rd Wallace St Barr St Return to depot |
| | | Priestland bus turning area(bad weather forecast) Newmilns London Rd & Greenside Car Parks (&morning patrol) Galston Primary School drop off Western Rd (morning patrol) Galston Henrietta St car park (morning patrol) Darvel Primary School access Jamieson Rd (morning patrol) |

Gauchalland Depot - Priority 1 Carriageway Gritting Route 5 EAST AYRSHIRE COUNCIL

| Town /Village | Road Number | Description |
|----------------------|--------------------|--|
| Galston | | Portland Rd Standalane |
| Hurlford | | A71 Hurlford Cross (Circle RA) Main Rd Crookedholm Grougar Rd |
| Kilmarnock | | London Rd Sturrock St Armour St High Glencairn St East Shaw St junction East Shaw St Roundabout Bentinck St James Little St Titchfield St Portland St South Hamilton St Irvine Rd B7081 Haining Avenue Whatriggs Rd New St Hurlford Rd Kinlock Rd Lammermuir Rd Treeswoodhead Rd Wyvis Rd Dungavel Rd Tinto Avenue Loudoun Avenue Campsie Rd |
| Kilmarnock | | Methven Avenue Roundabout Rathlin Avenue Central Avenue Shortlees Rd Loreny Drive Knockmarloch Drive Roundabout exit Langside Avenue Blacksyke Avenue Knockmarloch Drive Blacksyke Avenue |

| Gauchalland Depot - Priority 1 Carriageway Gritting Route 5 EAST AYRSHIRE COUNCIL Continued | | |
|--|-------------|---|
| Town /Village | Road Number | Description |
| Kilmarnock | | Central Avenue Burnpark Rd Roundabout on Caprington Avenue Loreny Drive |
| | C8 | C8 to junction Main St |
| Craigie | | Craigie Village to Junction C119 |
| | C119 | Junction C8 |
| Kilmarnock | | Caprington Avenue Central Avenue Ayr Rd Cunninghame Drive Darnley Drive Stonyhill Avenue Elderslie Crescent Bruce St Witchknowe Rd Turnberry Drive Portland St Hill St Garden St Green St Car Park and Bus Station Holehouse Rd Culzean Crescent London Rd Walker Avenue Alloway Avenue Samson Avenue Mackinlay Place Nursery Avenue New Mill Rd Grassyards Rd Strawberry Bank South Dean Rd Kennedy Drive Sutherland Drive McDonald Drive MacCallum Place MacPhail Drive MacNaughton Drive |

| Gauchalland Depot - Priority 1 Carriageway Gritting Route 5 EAST AYRSHIRE COUNCIL Continued | | |
|--|-----|--|
| Kilmarnock | | MacKellar Place MacKenzie Drive MacPhail Drive Well Park Avenue |
| | C33 | C33 |
| Moscow | | Moscow |
| Galston | | Loudoun Avenue Holms Rd Neville Drive Holms Rd to Depot |
| Kilmarnock | | CAR PARKS: (MORNING PATROLS) West George St Sturrock St East Sturrock St West Queens St Fowlds St St Marnock St Titchfield St Princess St EAC London Rd |

Gauchalland Depot - Priority 1 Carriageway Gritting Route 6 EAST AYRSHIRE COUNCIL

| Town /Village | Road Number | Description |
|----------------------|--------------------|---|
| | A719 | To A76 Junction |
| | A71 | A71 Dual C/way Moorfield RA B7064 Roundabout |
| | B7081 | B7081 Crosshouse Roundabout Hospital Roundabout |
| | B7081 | B7081 to Springside Boundary |
| | U16 | U16 Thornton Rd |
| | A759 | A759 Gatehead |
| | B7064 | B7064 Roundabout |
| Kilmarnock | | Dumfries Drive NeePhill View |
| | B7064 | B7064 to Irvine Rd RA B7081 |
| | A71 | A71 to Dreghorn Roundabout Moorfield |
| | A71 | A71 Moorfield Roundabout Bellfield Interchange |
| Kilmarnock | | Queen's Drive Hurlford Rd Campbell St Roundabout A71 on ramp A71 off ramp Campbell St Bentinck St Brewery Rd Lawson St Dick Rd Rennie St Elmbank St Elmbank Avenue Dick Rd Beech Avenue Roundabout Beech Avenue Pine Rd Hazel Avenue Hawthorn Square |

| Gauchalland Depot - Priority 1 Carriageway Gritting Route 6 EAST AYRSHIRE COUNCIL Continued | | |
|--|----------------|---|
| Town /Village | Road Number | Description |
| Kilmarnock | | Willow Rd Cedar Rd Olive Rd Grange Terrace Annanhill Avenue Bonnyton Rd Munro Avenue Munro Place Fullarton St Portland Rd Grange St Park St North Hamilton St Strand St Nelson St Grange Place Croft St Langlands St Old Irvine Rd Woodstock St Woodstock Place Sandbed St Bank St John Dickie St Mount Avenue Holms Rd Aird Avenue Barbadoes Rd Burnside St Holmquarry Rd Old Rd |
| Kilmarnock | | Blair Avenue Union St Academy St Cessnock Rd Liffnock Avenue Richardson Avenue Mayfield Avenue Craigie Rd Kerrmuir Avenue Dumleyhill Drive Return to Depot |

Gauchalland Depot - Priority 1 Carriageway Gritting Route 7 EAST AYRSHIRE COUNCIL

| Town /Village | Road Number | Description |
|----------------------|--------------------|---|
| | A70 | A70 Cumnock to Cronberry to Riverside Gardens Cronberry A70 to South Lanarkshire Boundary |
| | B743 | B743 Muirkirk to South Lanarkshire Boundary (turn at layby) |
| Muirkirk | | Burn Ave Muirkirk Wellwood St Kirk Green Furnace Rd Henderson Dr Millar Rd Stitt Pl Pagan Walk |
| | B743 | B743 to junction B7037 |
| Mauchline | | B743 from junct B7037 to Junct Mary Morrison Dr Mauchline |
| | B705 | B705 to A76 |
| | | Station Rd to corner turn |
| | B705 | B705 to Junction B713 Catrine |
| | B713 | B713 to A76 |
| | C50 | C50 Brackenhill Rd to B7036 right to A70 ochiltree |
| | B7036 | B7036 from C50 to Darlaw View |
| | | Return to Depot |

Gauchalland Depot - Priority 1 Carriageway Gritting Route 8 EAST AYRSHIRE COUNCIL

| Town /Village | Road Number | Description |
|---------------|-------------|--|
| | | B713 to Junction B705 |
| | | B705 to Sorn St |
| | | Sorn St to Sloan Street |
| | | Sloan Street to James Taylor Avenue |
| | | James Taylor Avenue to John Street |
| | | John Street to Sloan Street |
| | | Sloan Street RA to Junction B705 |
| | | B705 to B713 |
| | | From B713 to Sloan Street junction James Taylor Avenue |
| | | B705 to Auchinleck Academy |
| | | Auchinleck Academy (access mornings only) |
| | | B705 to Roundabout Mauchline Rd |
| | | Mauchline Rd to A76 Roundabout |
| | | Templeton RA off slip back |
| | | C62 to B7036 (Barony Rd) |
| Auchinleck | | Barony Rd to Coal Rd |
| | | Coal Rd to Barbieston Rd |
| | | Barbieston Road to Junction Church Street |
| | | Church Street |
| | | Backrogerton Crescent |
| | | Barbieston Road to Milne Avenue |
| | | Milne Avenue to Backrogerton Crescent |
| | | Loupe then Milne Avenue upside |
| | | Old Avenue to Sorn Road |
| | | School Rd and Dalshalloch Rd (mornings only) |
| | | Main St to Well Rd |
| | | Well Rd to Church St |
| | | Main St to A70 Cumnock |
| Cumnock | | New Bridge St |
| | | A70 to Roundabout |
| | | Cumnock Academy Access (mornings only) |
| | | Kerr & Smith |
| | | Hearth Rd to Hearth Pl right to Car Rd right to Cairn Rd |
| | | to College to B7083 |
| | | Glaisnock St to Greenholm Rd |
| | | Greenholm Rd |
| | | Glaisnock St to Townhead St |
| | | Townhead St to Edgar Ave |
| | | Edgar Ave to Barshare Rd loup |

| Gauchalland Depot - Priority 1 Carriageway Gritting Route 8 EAST AYRSHIRE COUNCIL | | |
|---|-------------|---|
| Town /Village | Road Number | Description |
| | | Barshare Rd loup |
| | | Drumbrochan Rd turn right treat Holland Cres |
| | | Dalglish Ave to Drumbrochan Rd |
| | | Drumbrochan Rd to Holland Cres |
| | | Drumbrochan Rd to A70 Barrhill Rd |
| | | Lugar St |
| | | Hamilton Pl |
| | | B7083 to junction B7046 |
| | | B7046 to A70 |
| | | Cumnock College to Craigens Rd |
| Craigens | | Craigens Rd to Lamont Cres |
| | | Lamont Cres right to Ryderston Dr |
| | | Craigens Road to Loganhill road |
| | | Avisyard Rd to Davaar Ave to MacIntyre Cres loup |
| Cumnock | | Holmburn Rd to Glaisnock St |
| | | Glaisnock St to A76 |
| | | Glaisnock Rd U719 to U720 |
| | U719 | U719 |
| | U720 | U720 Rigg Rd to B741 |
| Logan | | Loganhill Road to Logan Avenue |
| | | Logan Ave right to Boswell Cresto Bryce Ave right to Paterson Ave |
| | | Logangate Terrace |
| | | Logan Ave to Glenmuir Water Rd U729 |
| | U729 | U729 to A76 |
| | | Peesweep Brae Rigg Rd |
| | C65 | C65 to Sorn |
| | | Return to Depot |

Meadowhead Depot - Priority 1 Carriageway Gritting Route 9 EAST AYRSHIRE COUNCIL

| Town /Village | Road Number | Description |
|---------------------------|--------------------|---|
| | B742 | B742 to Junction A713 |
| | A713 | A713 to Junction B7034 Dalrymple |
| | B7034 | B7034 to Dalrymple at Garden Street |
| | B742 | B742 turn left treat Forglen Rd turn left treat Hill View to School |
| | | B742 to A713 |
| | A713 | A713 to Junction B742 Coylton |
| Patna | | A713 to Patna Dalharco Ave Dalharco Ave |
| | | Dalharco Ave to Carnshalloch Ave |
| | | Carnshalloch Ave to Whitehill Ave including RA |
| | | Whitehill Ave to Carskeoch Dr |
| | | Carskeoch Dr to Doonside Ave |
| | | Doonside Ave to Whitehill Ave |
| | | Daldowie Rd turn right Grit Dalvennan Ave |
| | | Carskeoch Dr to Grit Blaney Ave |
| | | Main St to Whitehill forestry Access |
| | | Main Street to A713 |
| Dalmellington & Bellsbank | A713 | A713 from Dalharco Ave to Boundary B7013 to RA |
| | | High Main St to Church Hill |
| | | Church Hill to Melling Terr |
| | | Main St B741 to Ayr Rd |
| | | Merrick Drive |
| | | Dalfarson Ave right to Ness Glen Rd right to Glen Mount |
| | | Dalfarson Ave to Craiglea Cres |
| | | Craiglea Cres to Merrick Dr |
| | | Doon Academy turning area |
| | | Gateside Rd |
| | | Burnton |
| | | Gateside Rd to B741 |
| | B741 | B741 High main Street to Roundabout |
| | B741 | B741 to U720 Dalricket Rd |
| | U720 | U720 Dalricket Rd to bridge |
| | B741 | B741 to A76 |
| New Cumnock | | C90 to Cemetery turn (mornings only) |
| | | Lime Rd to Greenbraes Dr to Blarene Dr |
| | | Connel View |

**Meadowhead Depot - Priority 1 Carriageway Gritting Route 9 EAST AYRSHIRE COUNCIL
Continued**

| Town /Village | Road Number | Description |
|----------------------|------------------------|---|
| | | Lanehead Terr to Burnton Pl |
| | | Burnton Pl to Lime Rd |
| | | Connel View |
| | | Highpark Ave to Redree Pl |
| | | Redree Pl |
| | | Ashmark Ave to Burnton Place to right Dalhanna Dr Loch Browan Cres |
| | | Loch Browan Cres |
| | | Dalhanna Drive to Greenhead Rd |
| | | Greenhead Rd to A76 |
| | | Castlemains Ave |
| | | Holm Rd |
| | | Mansfield Rd to haulage turning |
| | | Travel to Depot |

| Meadowhead Depot - Priority 1 Carriageway Gritting Route 10 EAST AYRSHIRE COUNCIL | | |
|---|-------------|---|
| Town /Village | Road Number | Description |
| | A70 | A70 to A76 Cumnock |
| Cumnock | | Holmhead Rd left to Hospital Rd right Bute Rd right Stepend Rd |
| | | Templand Dr left Holmhead Rd right to Robbiesland Dr to Sullivan Way |
| | | Holmhead Rd left to Oakbank Dr to Robbiesland Dr |
| | | Holmhead Rd to Hospital Rd straight |
| | B7046 | B7046 to B730 |
| | B730 | B730 to A713 |
| | C89 | C89 Rankinston to Roundabout |
| Drongan | | B730 to junction Watson Terrace Drongan |
| | | Watson Terrace to Taiglum Pl |
| | | Taiglum Pl |
| | | Lane Cres to Glencraig St |
| | | Glencraig St to Hanniston Ave |
| | | Hanniston Ave to DrumWhill Rd |
| | | Mill of Shield Rd to Coronation Road to Barbieston Ave |
| | | Littlemill of Shield Road turn left grit Carston Ave right grit Millmannoch Ave |
| | B730 | B730 to A70 junction |
| | | B730 to Stair |
| | | C82 Trabbochburn Rd |
| | | C3 to Mauchline |
| | | C49 to ochiltree |
| Ochiltree | | Main Street Ochiltree to Mote Toll to A70 |
| | U728 | U728 to B7046 |
| | B7046 | B7046 to B730 Sinclairston to Drongan |
| | A70 | A70 Coalhall west bound |
| | | Travel to Depot |

Appendix 5 Snow Carriageway Gritting Routes – East Ayrshire Council

Gauchalland Depot North Snow Route 1

| SECTION | ROUTE No. | DESCRIPTION |
|---------|-----------------|---|
| 1 | GALSTON | THE CROSS TO TICHFIELD STREET |
| | A71 | GALSTON BYPASS TO ROUNDABOUT(CIRCLE) TO NEWMILNS TO DARVEL TO BOUNDARY |
| | DARVEL | BURN ROAD TO CAMPBELL ST TO JAMIESON ROAD travel on A71 to Newmilns |
| | NEWMILNS | HIGH ST TO KINGS ST return to Galston |
| 2 | B7037 | FROM GALSTON TO B743 SORN return to Galston |
| | A719 | A71 JUNCTION TO MOSCOW TO WATERSIDE TO A77 |
| | A77 | FROM A719 JUNCTION TO EAGLESHAM ROAD B764 turn and return to A719 junction |
| | A77 | FROM A719 JUNCTION TO FENWICK MOTORS B751 |
| 3 | B751 | FROM FENWICK MOTORS TO KILMAURS CROSS TO CROSSHOUSE |
| | B7081 | CROSSHOUSE TO KILMARNOCK |
| | B7064 | B7081 TO MOORFIELD ROUNDABOUT |

Gauchalland Depot North Snow Route 2

| SECTION | ROUTE No. | DESCRIPTION |
|---------|-------------------|--|
| 1 | | START AT DEPOT |
| | A71 | FROM GALSTON TO HURLFORD CROSS |
| | A735 | FROM QUEENS DRIVE KILMARNOCK TO LUGTON return to Dunlop |
| | B706 | FROM DUNLOP TO A736 JUNCTION travel on A736 to B778 Junction |
| 2 | B778 | FROM A736 JUNCTION TO STEWARTON |
| | B769 | FROM MAIN STREET STEWARTON TO BOUNDARY CAIRN ROAD return to Stewarton |
| | STEWARTON | DAVID DALE AVE TO CRUSADER CRES TO KILWINNING RD |
| | B778 | FROM STEWARTON TO FENWICK |
| | FENWICK | MAIN ST Travel on B751 to Kilmarnock |
| | B7038 | FROM B751 TO KILMARNOCK |
| | KILMARNOCK | GLASGOW ROAD TO WESTERN RD TO MUNROE AVE TO IRVINE RD TO PORTLAND RD |
| | KILMARNOCK | TO DUNDONALD ROAD |

Gauchalland Depot North Snow Route 3

| SECTION | ROUTE No. | DESCRIPTION |
|---------|-------------------|--|
| 1 | | START AT DEPOT |
| | A719 | FROM GALSTON TO CROSSROADS A76 travel on A76 to Bellfield roundabout |
| | A71 | FROM A77 BELLFIELD ROUNDABOUT TO DREGHORN ROUNDABOUT CIRCLE BACK TO BELLFIELD |
| | A71 | FROM BELLFIELD ROUNDABOUT TO HURLFORD CROSS turn left |
| 2 | B7073 | FROM HURLFORD CROSS TO LONDON ROAD KILMARNOCK |
| | KILMARNOCK | STURROCK ST TO ARMOUR ST TO HIGH GLENCAIRN ST TO LOW GLENCAIRN ST |
| | B7038 | FROM CAMPBELL ST ROUNDABOUT TO A77 SLIP ROAD turn and proceed to Hurlford Cross |
| | B7073 | FROM HURLFORD CROSS TO A76 ROUNDABOUT |

Gauchalland Depot South Snow Route 1

| SECTION | ROUTE No. | DESCRIPTION |
|---------|---------------|---|
| 1 | B7046 | CUMNOCK TO DRONGAN |
| | B730 | DRONGAN TO COALHALL turn back to Drongan |
| 2 | DRONGAN | MILL O SHIELD ROAD TO COYLE CRES TO CORONATION ROAD TO BARBIESTON AVE |
| | B730 | FROM DRONGAN TO POLNESSAN (INCLUDING RANKINSTON BRAE) |
| | A713 | POLNESSAN TO PATNA |
| 3 | PATNA | DOON BRIDGE TO CARNSHALLOCH AVE TO MAIN ST turn right A713 |
| | A713 | PATNA TO DUMFRIES & GALLOWAY BOUNDARY AT POLNASKIE BRIDGE |
| | A713 | (Turn at Boundary) travel back on A713 to Bellsbank |
| 4 | BELLSBANK | BELLSBANK BRAE TO MERRICK DRIVE TO DALFARSON AVE TO CRAIGLEA CRES |
| | DALMELLINGTON | MAIN STREET TO CHURCH HILL turn and proceed to B741 |
| | B741 | DALMELLINGTON TO NEW CUMNOCK |
| | New Cumnock | LIME ROAD TO GREENBRAES TO BLARENE DRIVE TO DALHANNAH DRIVE |
| | | (Return to Depot) |

Gauchalland Depot South Snow Route 2

| SECTION | ROUTE No. | DESCRIPTION |
|---------|------------|---|
| 1 | A70 | DEPOT TO SOUTH LANARKSHIRE BORDER AT GLENBUCK |
| | | (Turn at lay-by East of Parish Holm), travel back on A70 turn right to |
| | B743 | MUIRKIRK TO SOUTH LANARKSHIRE BOUNDARY |
| | | (Turn at lay-by) travel back on B743 to Muirkirk |
| 2 | MUIRKIRK | WELLWOOD ST TO KIRK GREEN TO HENDERSON DR TO MILLERS RD turn right travel on A70 to |
| | B743 | WELLWOOD TO MAUCHLINE turn left at Mauchline cross travel on A76 turn left to |
| | MAUCHLINE | CARRICK VIEW TO JEAN ARMOUR DRIVE TO MARY MORRISON DR TO HAMILTON AVE |
| 3 | B705 | MAUCHLINE TO CATRINE |
| | CATRINE | NEWTON ST TO SLOAN ST TO SORN ST |
| | B705 | CATRINE TO AUCHINLECK |
| | AUCHINLECK | OLD AVE TO BARBIESTON RD TO COAL RD |
| | | (Return to Depot.) |

Gauchalland Depot South Snow Route 3

| SECTION | ROUTE No. | DESCRIPTION |
|---------|-----------|--|
| 1 | A70 | CUMNOCK TO COALHALL travel on B742 to A713 |
| | A713 | BOGHALL TO POLNESSAN turn and travel to Hollybush |
| 2 | B7034 | HOLLYBUSH TO DALRYMPLE |
| | B742 | DALRYMPLE TO BOGHALL travel on B742 and A70 to Ochiltree |
| 3 | OCHILTREE | MAIN ST TO MILL ST |
| | B7036 | OCHILTREE TO AUCHNLECK travel on B7083 to C23 |
| 4 | C23 | RIGG ROAD FROM B7083 TO A70 LUGAR travel on A70 to Cumnock |
| | CUMNOCK | DUMBROCHAN RD TO EDGAR AVE TO BARSHARE RD TO TOWNHEAD ST |

Appendix 6 Priority 2 Carriageway Gritting Routes – East Ayrshire Council

South Area Priority 2A

| SECTION | ROUTE No. | DESCRIPTION |
|---------|---------------|---|
| 1 | CATRINE | WOOD ST TO LAIGH ROAD |
| | MAUCHLINE | WELTON ROAD |
| | C3 | FROM C82 JUNCTION TO B730 |
| | C61 | OCHILTREE STATION ROAD FROM B7046 TO A70 |
| | C97 | SKARES STATION ROAD FROM A70 TO B7046 |
| 2 | OCHILTREE | BROOM CRES,GALLOWLEA AVE, |
| | U728 | FROM MOAT TOLL TO B7046 JUNCTION |
| | C11 | FROM WHITEHILL PATNA TO U765 GLASTRON ROAD |
| 3 | DRONGAN | FROM B730 TO END LOMOND VIEW THEN LOMOND CRESCENT return to B730 |
| | DRONGAN | MILLMANNOCH ROAD FROM TAIGLUM PLACE TO PETTOCH ROAD return to B730 |
| 4 | DALMELLINGTON | HOPES AVE, TO PATERSON ST,TO PARK STREET,TO CROFT ST, TO TOWNHEAD travel to |
| | BELLSBANK | AUCHENROY CRES, TO DALCAIRNEY ROAD,TO RECAWR AVE, TO MINNOCH ROAD TO |
| | BELLSBANK | HILLCREST TO MacATERICK DRIVE |
| | BELLSBANK | CORSERINE TERR, TO ERIFF ROAD TO MOSSDALE TERR, TO NESS GLEN ROAD |
| | B741 | FROM DALMELLINGTON TO STRAITON |

South Area Priority 2B

| SECTION | ROUTE No. | DESCRIPTION | | | | | | | |
|---------|------------|--|--|--|--|--|--|--|--|
| 1 | AUCHINLECK | CAMERON DRIVE TO BALLOCHMYLE AVE TO GLENSHAMROCK DRIVE TO ARRAN DR,DIPPOL CR | | | | | | | |
| | C22 | FROM AUCHINLECK TO A70 CRONBERRY | | | | | | | |
| | CUMNOCK | ROBERTSON AV TO McDONALD ST TO WARRICK DR, to HOLLAND CR ,TO HALL TERR, | | | | | | | |
| | CUMNOCK | TO CARR ROAD TO NANS TERR,TO HEARTH PLACE, TO HEARTH ROAD, TO JOHN BAIRD ST. | | | | | | | |
| | CUMNOCK | TO KINGS WAY TO HEMMINGS WAY TO HILLSIDE VIEW TO | | | | | | | |
| 2 | CUMNOCK | JOHN ALLAN DRIVE,TO BLACKFAULDS ROAD,TO NETHERTHIRD ROAD TO MENZIES AVE | | | | | | | |
| | U729 | GLENMUIR ROAD.FROM LAIGH GLENMUIR TO DALBLAIR ROAD END | | | | | | | |
| | U721 | DORNAL ROAD. FROM GLENMUIR ROAD END and return | | | | | | | |
| | U721 | DORNAL ROAD. FROM GLENMUIR ROAD TO A70 | | | | | | | |
| | C47 | FROM MANSEFIELD ROAD NEW CUMNOCK TO A76 MARCHBURN | | | | | | | |
| 3 | C90 | FROM CEMETERY TO TURNING POINT AT CRAIGDARROCH | | | | | | | |
| | U743 | FROM C36 BENSTON SMITHY TO B8046 SKARES ROAD | | | | | | | |
| | | | | | | | | | |
| | | Return to Depot | | | | | | | |

North Area Priority 2A

| SECTION | ROUTE No. | DESCRIPTION | | | | | | |
|---------|-----------|---|--|--|--|--|--|--|
| | KILMAURS | BENRIG AVE, TO EAST PARK DRIVE TO HABBIEAULD ROAD, TO LADESIDE ROAD | | | | | | |
| 1 | C129 | FROM A735 KILMAURS TO JUNCTION C6 | | | | | | |
| | C6 | FROM JUNCTION C129 TO KILWINNING ROAD STEWARTON | | | | | | |
| | STEWARTON | CASTLEHILL ROAD, TO ARRAN VIEW, TO CUNNINGHAM WATT ROAD, TO CLERKLAND ROAD, TO | | | | | | |
| 2 | STEWARTON | WESTBURN ROAD TO MERRYGREEN PLACE (INCLUDING TOP OF HILL) | | | | | | |
| | STEWARTON | ROBERTLAND RIGG, ANNICK CRESCENT, RIVERSIDE ROAD, GAMESHILL VIEW travel to Dunlop | | | | | | |
| | U13 | AIKET ROAD | | | | | | |
| | U26 | CLERKLAND ROAD FROM A735 TO C7 | | | | | | |
| | DUNLOP | WEST VIEW TERRACE | | | | | | |
| | C125 | FROM B706 TO B778 TO C6 | | | | | | |
| | C6 | FROM STEWARTON TO TORRANYARD | | | | | | |
| 3 | C112 | FROM B769 TO A77 | | | | | | |
| | C113 | FROM C112 TO STEWARTON | | | | | | |

North Area Priority 2B

| SECTION | ROUTE No. | DESCRIPTION | | | | | | |
|---------|------------|---|------------|--|--|--|--|--|
| | C133 | NEWMILNS TO DARVEL | | | | | | |
| | DARVEL | ANDERSON DRIVE, BRAES COURT AVE, HILLVIEW ROAD | | | | | | |
| 1 | DARVEL | DUBLIN RD (bottom part), TO MUIR DR, TO LINTMILL RD, TO WEST EDITH ST, TO | NEW STREET | | | | | |
| | DARVEL | WEST DONNINGTON ST TO EAST DONNINGTON ST TO | | | | | | |
| | DARVEL | JAMIESON ROAD (BOTTOM PART FROM A71 TO JUNCTION CAMPBELL STREET) | | | | | | |
| | C134 | DARVEL TO NEWMILNS | | | | | | |
| | C104 | FROM BROWN STREET TO U1 | | | | | | |
| | U1 | GALSTON MOOR ROAD FROM C104 TO A71 | | | | | | |
| 2 | NEWMILNS | CAMPBELL STREET | | | | | | |
| | U33 | WOODHEAD ROAD | | | | | | |
| | U3 | FOULPAPPLE - ALSTONPAPPLE FROM NEWMILNS TO DARVEL FULL LENGTH | | | | | | |
| | GALSTON | HENRIETTA ST, TO MAXWOOD RD, TO CAIRN VIEW, TO BELVEDERE VIEW TL TO CAIRN TERRACE | | | | | | |
| | GALSTON | COMPLETE BELVEDERE VIEW AND DUKE STREET TO B7037 | | | | | | |
| 3 | GALSTON | TO BARWOOD ROAD TO CATHERINE DRIVE TO MILRIG CRES. | | | | | | |
| | C53 | FROM A719 FIVEWAYS TO TREESWOODHEAD ROAD KILMARNOCK | | | | | | |
| | C120 | FROM A759 GATEHEAD TO B7038 SPITTALHILL | | | | | | |
| | U61 | FROM B7038 TO INCHGOTTRICK FARM | | | | | | |
| 4 | C66 | FROM A719 TO C85 WATERSLAP | | | | | | |
| | C75 | FROM RAITH ROAD FENWICK TO C66 JUNCTION | | | | | | |
| | C85 | FROM FENWICK TO C10 | | | | | | |
| | KILMARNOCK | BALMORAL ROAD | | | | | | |
| 5 | KILMARNOCK | SIMONSBURN ROAD AND UMBERLY ROAD | | | | | | |
| | KILMARNOCK | SAMSON AVENUE AND GARVEN COURT | | | | | | |

Appendix 7 Priority 3 Carriageway Gritting Routes – East Ayrshire Council

North Route 1 Priority 3

| SECTION | ROUTE No. | DESCRIPTION |
|---------|--------------|---|
| | | Gauchalland Depot travel C6 Stewarton |
| | DUNLOP | WEST VIEW TERRACE, THE FIELDING, LIVINGSTON TERRACE, GLAZERT ROAD, BURNS WAY, WOODSIDE PLACE |
| | DUNLOP | SOLOMONS VIEW |
| 1 | KILMAURS | EAST PARK CRESCENT, BOYDORR CRESCENT, CARMEL PLACE, WEST PARK CR, BEAUFIELD GRD, LADESIDE GRDNS |
| | KILMAURS | VINE PARK AVENUE, VINE PARK DRIVE,, GLENCAIRN TERRACE,, MILLHILL AVE, CATHERINE PLACE, FOURACRES DR |
| | KILMAURS | STANDALANE, YARDSIDE ROAD, CROFTHED ROAD, LANGMUIR QUADRANT, BELLSLAND CRESCENT, SHAW ROAD |
| | KILMAURS | MARSHALL GARDENS, TOWERHILL AVENUE, KIRKTON AVENUE, KNOCKLANDHILL, HILLMOSS |
| | KNOCKINTIBER | CASTLE VIEW TO HEMPHILL VIEW TO PLANN ROAD |
| | U45 | KIRKLAND ROAD FROM KNOCKENTIBER TO NORTH AYRSHIRE BOUNDARY |
| | U57 | BUSBIE MAINS ROAD FROM C20 IRVINE ROAD TO NORTH AYRSHIRE BOUNDARY |
| 2 | CROSSHOUSE | CROSSDENE ROAD, SPRINHILL AVE, CREDON DR, HUNTER ROAD, THORNTON AVE, CRAIGLEA AVE, LAURIELAND AVE |
| | CROSSHOUSE | WOODBANK RD, WOODLEA COURT, ANNANDALE VIEW, ANNANADALE CRES, PADDOCK VIEW (Thorntoun Estate) |
| | U18 | CARMELBANK ROAD FROM B751 CROSSHOUSE TO U16 GATEHEAD |
| | U51 | NETHERCRAIG ROAD FROM U16 to end |
| | U11 | STACKLAWHILL ROAD FROM C6 TO C20 |
| | U12 | BANKEND-AULTON ROAD FROM C6 TO C20 |
| | U13 | AITKET ROAD FROM B706 TO B778 |
| 3 | U26 | CLERKLAND ROAD FROM A735 TO C7 |
| | U27 | STRUTHERS ROAD FROM C7 TO C100 |
| 4 | U39 | GOUKNEST ROAD FROM B778 TO A735 |
| | U46 | LANGTON ROAD FROM B706 TO A735 |

North Route 2 Priority 3

| SECTION | ROUTE No. | DESCRIPTION |
|---------|-----------|--|
| | | Gauchalland Depot travel to Stewarton |
| 1 | STEWARTON | MORTON ROAD TO FLEMING DRIVE TO LOTHIAN ROAD (PART) TO McBETH ROAD TO KILBRIDE ROAD |
| | STEWARTON | MONTGOMERIE DRIVE |
| | STEWARTON | TO COCKLEBIE ROAD TO KINLOCH AVE TO ELGIN AVENUE TO KIRKMUIR DRIVE(PART) TO CORSEHILLBANK STREET |
| | STEWARTON | EGLINTOUN ROAD TO BALVENY COURT TO LANGSHAW COURT TO LOCHRIG COURT TO GRAHAM TERRACE TO |
| | STEWARTON | GILMOUR STREET TO THE CRESCENT TO HAMILTON PLACE TO VICTORY WAY TO DARLINGTON VIEW TO |
| | STEWARTON | JUBILEE RISE TO VICTORIA COURT TO |
| 2 | STEWARTON | NETHERLAND ROAD TO GAMESVHILL VIEW TO ANICK CRESCENT TO RIVERSIDE ROAD TO KIRBY GLEBE |
| | STEWARTON | AILSA VIEW, ARMOUR PLACE, BONNET COURT, EWING WAY, KERSLAND GAIT, STANE BRAE, DRAFFEN MOUNT |
| | STEWARTON | CAULDHAME RIGG, FAIRWAYS, HOLMHEAD DRIVE, ANNICKBANK, CAIRN CLOSE, DORNIE CLOSE |
| 3 | STEWARTON | LAMBERTON ROAD, CASTLEHILL BOWMAN PLACE, KIRKMUIR ROAD, BRAEMORE ROAD, ARRAN VIEW |
| | STEWARTON | CUNNINGHAM-WATT ROAD ONTO CLERKLAND ROAD travel to WESTBURN ROAD ONTO MERRYGREEN PLACE to |
| 4 | C108 | From B769 Junction to FULLWOOD TO BOUNDARY return to C7 turn right to U21 junction |
| | U21 | BROCKWELLMUIR ROAD From C7 to A735 turn left on A735 to Dunlop |
| | C100 | FROM DUNLOP TO BOUNDARY turn left to Dunniflat |
| 5 | U28 | DUNNIFLAT FROM BOUNDARY TO U89 HALKET |
| | U89 | HALKET ROAD FULL LENGTH |

| |
|--------------------------|
| North Route 3 Priority 3 |
|--------------------------|

| SECTION | ROUTE No. | DESCRIPTION |
|---------|------------|--|
| | | Travel to Kilmarnock |
| 1 | KILMARNOCK | WOODHILL ROAD,ST MAURS CRESCENT,ASHDALE AVENUE,BLUEBELL DRIVE,HEATHER COURT,SHISKINE DR |
| | KILMARNOCK | AUCHENCAR DRIVE,CORDON RD,NACHRIE ROAD,JOHN WALKER DRIVE,TALISKER AVE,CARDHU CR,NEWLANDS DR |
| | KILMARNOCK | TOBERMORY DRIVE, DALMORE ROAD,GLENKINCHIE ROAD |
| | KILMARNOCK | BRINGHAM ROAD,GLASSOCK ROAD,MUIREND ROAD,BURNFOOT PLACE,MORVEN AVENUE,ARDGOUR ROAD, |
| 2 | KILMARNOCK | ARDBEG AVENUE,TITWOOD DRIVE,REDDING AVENUE,TODHILL AVENUE,RAITHBURN AVENUE,THORN TERRACE |
| | KILMARNOCK | KINGSWELL AVENUE,CROFTHED AVENUE,BRACKENHILL AVENUE,ORKNEY DRIVE,KIRKWALL PLACE, |
| | KILMARNOCK | STRONSAY PLACE,FARANSAY PLACE,AILSA PLACE,RONA PLACE,ERISKAY PLACE,IONA PLACE,CUTHBERT COURT |
| | KILMARNOCK | SHETLAND DRIVE,ARRAN AVENUE,MANOR AVENUE,ROWALLAN DRIVE,GLENCRAIG DRIVE,MUIREND PLACE |
| 3 | KILMARNOCK | MOSSIDE PLACE,LEVEN AVE,STAFFORD STREET,POTTERY PLACE,BATH STREET,MONTGOMERY STREET |
| | KILMARNOCK | BALMORAL ROAD,BURNS AVE,LANDSBOROUGH DRIVE,DUNOON AVE,ROTHSAY PLACE,DEANHILL LANE |
| | KILMARNOCK | GRAITHNOCK DR,McILVANNEY DR,McILVANNEY CR,ORCHARD ST,BLAIR ST,THOMSON ST,DANNY COFFEY AVE |
| | KILMARNOCK | NORTHCRAIG RD,HILLPARK DR,CAMPBELLTOWN DR,TOWNHOLM,HARRIET RD,HIGHFIELD AVE,CLAY CR, |
| | KILMARNOCK | ALEXANDER Mc LAREN GARDENS,THOMAS BAIRD GARDENS,JOHN KENNEDY PLACE,HILLHEAD SQ, |
| | KILMARNOCK | ARCHIBALD CRAIG PLACE,DE-WALDEN DRIVE,FORREST GROVE,FAILFORD PLACE,GROUGAR DRIVE,CASTLE DR |
| 4 | KILMARNOCK | JOHN BURTT PLACE,INVERCLOY PLACE, |
| | FENWICK | CREELSHAUGH ROAD,GLEBE TERRACE,KIRKTON PLACE,POLES ROAD, DUNLOP STREET,MURCHLAND AVENUE, |
| | FENWICK | BRAEHEAD ROAD,MAUNSHUEGH ROAD,HOLMES CRESCENT,GLENCRAIG TERRACE,RYSLAND DRIVE |
| | FENWICK | BLACKFAULDS DRIVE,SKERNIELAND ROAD,FOWLDS VIEW.FULTONS CRESCENT,BROOKFIELD GROVE |
| | U64 | GAINHILL ROAD FROM MAIN STREET FENWICK TO B778 |
| | U54 | TANNACRIEF ROAD FROM B778 TO B751 NEAR MEIKLEWOOD |
| 5 | WATERSIDE | MILL WYND FROM A719 TO CUL DE SAC |
| | U47 | LITTLERAWES ROAD FROM C33 TO C10 |
| | U44 | OXENSHAW ROAD FROM A719 TO C66 |
| | U40 | HARESHAWMOOR ROAD A719 WATERSIDE TO END |
| 6 | U41 | RUSHAW ROAD FROM A719 MOSCOW TO END |
| | U42 | HEMPHILL ROAD FROM A719 TO U41 |
| | U15 | ASSLOSS ROAD FROM GLASGOW ROAD TO U65 |

| |
|---------------------------------|
| North Route 4 Priority 3 |
|---------------------------------|

| SECTION | ROUTE No. | DESCRIPTION |
|---------|-----------|--|
| | | Start Galston |
| | GALSTON | AYR ROAD,GATESIDE ROAD,MILRIG CRESCENT,LOUDON AVENUE,LADYTON DRIVE,BOYD STREET,CHAPEL LANE |
| | GALSTON | BARRMILL ROAD,BLAIR STREET,DUKE STREET,BENTINCK STREET,BLAIR CRESCENT,SUTHERLAND TERRACE, |
| 1 | GALSTON | CASTLEVIEW AVENUE, SORN PLACE, BURNAWN PLACE, |
| | GALSTON | MARGARET AVE,MILLANDS ROAD,NEW ROAD,ANDREW LUNDIE PLACE,CESSNOCK PLACE,CLOCKSTON RD |
| | C103 | B744 TO B7037 |
| 2 | C104 | B7037 TO NEWMILNS |
| | NEWMILNS | STONEYGATE ROAD,STRATHOME TERRACE,RIVERBANK STREET,SHIELDS ROAD,QUEENS CRESCENT, |
| 3 | NEWMILNS | ,MURE PL,IRVINE ROAD,LOUDON ROAD WEST,LAWRIE ST, |
| | NEWMILNS | GILFOOT,GIRVAN ST, |
| | NEWMILNS | BROWNS ROAD,BRAEHEAD ROAD,BURN ROAD, MILL CRESCENT,UNION STREET |
| | DARVEL | DUBLIN ROAD,GLENBRIG, MURDOCH ROAD |
| | DARVEL | JAMESON ROAD (TOP PART),EAST & WEST DONNINGTON ST,WOODBURN CT,GILLILAND RD,LOUDOUN CT |
| 4 | DARVEL | WEST EDITH STREET,FLEMING STREET,MUIR DRIVE,LINTMILL ROAD,BURNBANK STREET,MAIRS ROAD |
| | DARVEL | DRUMCLOG CRESCENT,GLEN CRESCENT,GREENBANK ROAD,GEORGE YOUNG DRIVE, ROXBURGH GARDENS |
| | DARVEL | DYKES COURT,LANFINE VIEW,MORTON PARK DRIVE,DALQUHARN ROAD,COUNTESS STREET,TEMPLE STREET, |
| | DARVEL | GREEN STREET,IRVINEBANK ROAD,ROBERTSON GARDENS,JOHN MORTON CRESCENT,CAUSEWAY ROAD |
| | U2 | BRANSFIELD ROAD FROM DARVEL TO END |
| | U3 | FOULPAPPLE FROM C133 JUNCTION TO DARVEL |
| 5 | U4 | LADYBROW ROAD PRIESTLAND TO LOUDONHILL |
| | U5 | PASFORD AND YONDERCROFT ROAD FROM A71 TO BOUNDARY |
| | U8 | BROOMHILL ROAD FROM DARVEL TO BOUNDARY |
| | U7 | FROM A71 TO SOUTH LANRKSHERE BOUNDARY |
| | C135 | ALLANTON PLAINS |
| | U9 | WINDSHIELDS FROM U3 LITTLE GLEN TO U8 BROOMHILL |
| | U22 | BURNFOOT ROAD FROM U3 TO END |
| | U30 | EAST NEWTON ROAD FROM A719 TO U33 |
| | U55 | THREEPWOOD ROAD FROM B7037 TO U56 |
| | U56 | BOGEND AND MIDDLEFIELD ROAD FROM U1 TO B7037 |

North Route 5 Priority 3

| SECTION | ROUTE No. | DESCRIPTION |
|---------|------------|--|
| 1 | KILMARNOCK | WILSON AVE,MELVILLE STREET,CAMERON DRIVE,BARCLAY DRIVE,FINDLAYSON DRIVE,LINDSAY DRIVE, |
| | KILMARNOCK | ANDERSON PLACE,DRUMMOND PLACE,BANNERMAN DRIVE,KERR ROAD,LOCH VIEW,RANKIN COURT,DEAN VIEW |
| 2 | KILMARNOCK | WILLIE ROSS,SINCLAIR COURT,HUNTLY PLACE,BAIRD PLACE,LESLIE PLACE,FORBES PLACE,DUNBAR DRIVE |
| | KILMARNOCK | KAY PARK TERRACE,KAY PARK CRESCENT,McLEAN DRIVE,McGREGOR DRIVE,McEWAN PLACE,McKINNON DRIVE |
| 3 | KILMARNOCK | McLEOD DRIVE,McLAREN PLACE,DUNURE DRIVE,GREENAN ROAD,WELLPARK GROVE,MACANDREW GARDENS |
| | KILMARNOCK | MILTON DRIVE,MILTON ROAD,MILTON AVE,OLIPHANT DRIVE,COTTER DRIVE,SOUTER DRIVE,MOSSGIEL AVE |
| 4 | KILMARNOCK | ELLISLAND DRIVE,BRAEHEAD COURT,BRAESIDE STREET,LOANHEAD STREET,ELMBANK DRIVE,GLEBE AVE |
| | KILMARNOCK | GLEBE ROAD,NEW MILL ROAD,GLENAPP QUADRANT,LINFERN AVE,SPARROW GARDENS,OSPREY DRIVE |
| | KILMARNOCK | BUNTING PLACE,NURSERY GARDENS,GILMOUR STREET,ST ANDREWS STREET,NURSERY STREET,DOUGLAS STREET |
| | KILMARNOCK | WEST NETHERTON STREET,GLENFIELD PLACE. |

North Route 6 Priority 3

| SECTION | ROUTE No. | DESCRIPTION |
|---------|-------------|---|
| | | Travel to Kilmarnock |
| 1 | KILMARNOCK | PEACE STREET,STEVENSON STREET,GIBSON STREET,YORK PLACE,DAVID ORR STREET,CAIRN TERRACE |
| | KILMARNOCK | LENNOX CRESCENT,STIRLING AVE,WAVERLY AVE,ALMOND PLACE,ALDER PLACE,WARWICKHILL ROAD |
| | KILMARNOCK | BUSBIEHILL PLACE,CARMEL AVE,SANNOX ROAD,SOUTHOK ROAD,GLEN ORRIN AVENUE |
| | KILMARNOCK | GLEN FARRAR WAY,MOORFIELD AVENUE,WOODSIDE AVENUE,FAIRLIE AVENUE,HOLMES CR,STRATHLEA CR |
| 2 | KILMARNOCK | MOUNT PLACE,HAPERLAND DRIVE,ARROTHILL DRIVE,BLACKWOOD AVENUE,HOLMLEA DRIVE,SORN ROAD |
| | KILMARNOCK | McCLELLAND DRIVE,WALLACE STREET, HOWARD PARK DRIVE,MEWS LANE SOUTHOOK ROAD, |
| | KILMARNOCK | PORTER DRIVE,GAGIESTON DRIVE,SCOTT ROAD, ROWANHILL PLACE,ELLIS STREET,SEAFORD STREET |
| 3 | KILMARNOCK | ,WESTMOOR CRESCENT,HOLMLANDS PLACE,JAMES SYM CRESCENT, |
| | KILMARNOCK | SMILLIE PLACE,LABURNUM ROAD,CHERRY ROAD,WALNUT ROAD,JASMINE ROAD,LAUREL PLACE,RUGBY ROAD |
| | KILMARNOCK | RUGBY CRESCENT,SPRINGHILL PLACE,CHARLES STREET,CHARLES STREET,CHARLES PLACE,HOWARD STREET |
| 4 | U35 | FARDALEHILL ROAD FROM BONNYTON TO KNOCKINTIBER |
| | HURLFORD | WALDEN ROAD,MORRIS CRESCENT,KERSLAND CRESCENT ROXBURGH ROADS,BLAIR ROAD,BLAIR CRESCENT |
| | HURLFORD | LEVEN DRIVE,LOMOND AVENUE,CESSNOCK DRIVE,CESSNOCK AVE,KNOWEHEAD ROAD |
| | HURLFORD | BARWELL DRIVE,FURNACE COURT,PORTLAND COURT,PORTLAND BRAE,MARCHMOUNTCOURT,HOLYOAKE COURT |
| 5 | CROOKEDHOLM | SERIGHT SQUARE,SERIGHT CRESCENT,RALSTON DRIVE,STRUTHERS AVENUE |
| | U37 | MILTON ROAD FROM KILMARNOCK TO A719 |
| | U38 | LANGLANDS ROAD FROM C33 DYKESCROFT TO U37 MILTON ROAD |
| | U34 | FAIRYHILL ROAD FROM DUNDONALD ROAD TO HOLMES ROAD |
| | U36 | GATESIDE ROAD FROM U37 TO A719 |
| | C127 | FROM HURLFORD TO A719 |

North Route 7 Priority 3

| SECTION | ROUTE No. | DESCRIPTION |
|---------|-------------|--|
| | | Travel to Kilmarnock |
| 1 | KILMARNOCK | ARDLE AVENUE,LUCE AVENUE,GARNOCK ROAD,TWEED CRESCENT,LAWERS CRESCENT,CROMDALE ROAD |
| | KILMARNOCK | CAMPSIE ROAD DUMGOYNE ROAD,KINNOULL ROAD,GRAMPIAN ROAD,ESK ROAD,DEE AVENUE,NEVIS PLACE, |
| | KILMARNOCK | LOMOND ROAD,DUNGAVEL ROAD,BROOMHILL QUADRANT,TURNBERRY DRIVE,MOSSHEAD ROAD, |
| | KILMARNOCK | CRAIGIE ROAD,GATESIDE PL,TREESBANK RD,LAINSHAW AVE, |
| 2 | KILMARNOCK | PEATLAND QUADRANT,BRIDGEHOUSEHILL ROAD,COMMONHEAD ROAD,SHORTLEES CRESCENT |
| | KILMARNOCK | BURNPARK ROAD,EARLSTON AVENUE,SUNNYSIDE ROAD,TOWNEND ROAD,MARCHDYKE CRESCENT,STAFFLER DRIVE |
| | KILMARNOCK | HURLFORD SERVICE ROAD,STRATHY PLACE,CESSNOCK PLACE |
| 3 | KILMARNOCK | INCHGOTRICK ROAD,SCARGIE ROAD,SIMONS CRESCENT,KELBURN CRES,LOCHGREEN PL,CRAIGIE AVENUE, |
| | KILMARNOCK | KEN ROAD,SPEY AVENUE,CAIRNGORM ROAD,LEADHILLS ROAD,PENTLAND ROAD,LAWERS ROAD,LOCHNAGER ROAD, |
| | KILMARNOCK | WITHKNOWE AVENUE,UNDERWOOD PLACE, BALGRAY AVENUE,LANGSIDE AVENUE,KINLOCH RD,DEVERON RD |
| | KILMARNOCK | JEFFREY STREET, WALLACEHILL ROAD,MAXHOLM ROAD,BARNWELL ROAD,GRANGER ROAD,PICKEN STREET |
| 4 | SOUTHCRAIGS | STEWARTON DRIVE,WALLACETOWN AVENUE,CROSS PLACE,EDAY CRESCENT,BURNS CRESCENT |
| | SOUTHCRAIGS | UIST LANE,STORNAWAY DR,PORTREE AVE,BURRA DR,WESTRAY DR,DUNSKY RD,DARVEL AVE,NEWMILNS GARDENS |
| | SOUTHCRAIGS | WESTFIELD ROAD,COLONSAY PLACE,WESTRAY,BOYDSTON WAY,GALSTON PLACE,PRIESLAND CLOSE, |
| | SOUTHCRAIGS | NEWMILNS GARDENS,FAIR ISLE PLACE,LERWICK PLACE |
| 5 | CRAIGHALL | CRAIGHALL BANK,CRAIGHALL CRESENT,CRAIGHALL ROAD |
| | U50 | MOSSIDE ROAD FROM B751 TO B7038 |
| | U59 | EAST HILLHOUSE ROAD FROM A77 TO C119 |
| | C119 | FROM SOUTH AYRSHIRE BOUNDARY TO C53 FIVEWAYS |
| | U60 | DITTON ROAD FROM C120 TO BOUNDARY |
| | U63 | WHEATRIGGS ROAD FROM A76 TO A77 |

South Route 1 Priority 3

| SECTION | ROUTE No. | DESCRIPTION | | | | | | | |
|---------|-----------|--|--|--|--|--|--|--|--|
| | | Travel from Depot to | | | | | | | |
| 1 | C123 | FROM B730 JUNCTION TO C124 MOAT TOLL | | | | | | | |
| | OCHILTREE | KNOWE VIEW , GLEBE CRESCENT, POOLE AVE, STEWART AVE, DOUGLAS BROWN AVE, proceed to Catrine | | | | | | | |
| | CATRINE | BALLOCHMYLE QUADRANT, FOURFIELDS, ALLAN DRIVE, HILLSIDE, SOMMERVILLE STREET, SHAWLANDS STREET | | | | | | | |
| 2 | CATRINE | MONTGOMERIE STREET, BLACKWOOD AVE, GAMES HALL, ST CUTHBERTS STREET,, MILL SQUARE | | | | | | | |
| | CATRINE | BRIDGE LANE, FORD STREET, BALLOCHMYLE VIEW, GORDON STREET, AYR STREET, | | | | | | | |
| | SORN | FIR PARK, ANDERSON DRIVE, WOODLANDS ROAD | | | | | | | |
| 3 | U76 | BLACKSIDE FROM DYKENEUK TO END OF ROAD | | | | | | | |
| | U722 | DYKENEUK FROM B7037 TO B743 SORN | | | | | | | |
| | U79 | BROCKLAR FROM DYKENEUK TO B743 | | | | | | | |
| | MAUCHLINE | , COWGATE, CARRICK VIEW, | | | | | | | |
| | MAUCHLINE | BEECHWOOD ROAD, SUNNYSIDE CRESCENT, HUGHFIELD ROAD, LOCH ROAD, CASTLE STREET, THE KNOWE | | | | | | | |
| 4 | MAUCHLINE | MANSEFIELD ROAD, LOANHILL AVE, MOSSGIEL AVE, ALEXANDER TERRACE, AULD AVE, BALLOCHMYLE AVE, | | | | | | | |
| | MAUCHLINE | LOCHLEA AVE, GREGORY STREET, FERNLEA AVE, SOUTHFIELD AVE, EAST PARK AVE, NETHER WALK, ARRAN VIEW, | | | | | | | |
| | MAUCHLINE | Clarinda Cres, Nether Walk, East park Ave, Netherplace Quadrant | | | | | | | |
| | MAUCHLINE | CONNEL CRES, WHITEFORD PLACE, GRASSMILLEES WAY | | | | | | | |
| | MAUCHLINE | CONNEL CRESCENT, WESTPARK AVENUE DONALDSTON CRESCENT, BEECHGROVE ROAD proceed to Hilltop | | | | | | | |
| | U732 | HAUGH ROAD FROM STATION ROAD MAUCHLINE TO C50 JUNCTION travel on B7036 to Mauchline Road Ochiltree | | | | | | | |
| 5 | U742 | MOSSIDE ROAD FROM HAUGH ROAD TO B743 | | | | | | | |
| | U735 | OLD HOWFORD FROM A76 CATRINE TO A76 MAUCHLINE | | | | | | | |
| | U712 | CLEWS ROAD FROM HAUGH ROAD TO OLD HOWFORD ROAD | | | | | | | |
| | CUMNOCK | BANK AVE, BANK GLEN, KEIR HARDIE HILL, JOHN BAIRD ST, ELIZABETH CR, LINK RD, | | | | | | | |
| 6 | CUMNOCK | WYLIE CR, McCALL AVE, MITCHIE ST, HERDSTON PL, GEMMILL AVE, LATT A CR, SHANKSTON CR, | | | | | | | |
| | CUMNOCK | MARKET LANE, GREENHOLM ROAD, RICHMOND TERRACE, GREY ST, EMRYS AVE | | | | | | | |
| | CUMNOCK | GLENLAMONT, GLENCARIN, GLENRAMSKILL AVE, McQUEEN AVE, HILLSIDE VIEW, HORSECEUGH CLOSE. | | | | | | | |

South Route 2 Priority 3

| SECTION | ROUTE No. | DESCRIPTION | | | | | | | |
|---------|------------|---|--|--|--|--|--|--|--|
| | | Travel from Depot to | | | | | | | |
| | AUCHINLECK | CAMERON DRIVE, BALLOCHMYLE AVENUE, GLENSHAMROCK DRIVE | | | | | | | |
| | AUCHINLECK | BEECHWOOD AVE, BOSWELL DRIVE, HIGHHOUSE VIEW, RUNNELS VIEW, PENNYLANDS VIEW, SCHOOL ROAD | | | | | | | |
| 1 | AUCHINLECK | LAMBFAIR GARDENS, STONER CRESCENT, HEATHFIELD ROAD, DARNCONNER AVE, AIRD AVE, PEDEN DRIVE | | | | | | | |
| | AUCHINLECK | QUARRYKNOWE, MILNE AVE, JUDGE AVE, TALBOT DIVE, MILNE AVE proceed to Muirkirk | | | | | | | |
| | MUIRKIRK | THE STYLE, FURNACE RD, COLTHART DR, MILLAR ROAD(PART), LAPRAIK DR | | | | | | | |
| | MUIRKIRK | HAREWOOD AVE, SMALLBURN DRIVE, SHAWKNOWE AVE, GARPEL AVE, LOVEDALE CRESCENT, | | | | | | | |
| 2 | MUIRKIRK | MEANLOUR SDRIVE, HARESHAW CRESCENT, PARK AVE, MIDDLEFIELD DRIVE, GARRONHILL travel on B743 to | | | | | | | |
| | U724 | GARPEL ROAD. FROM B743 TO END OF ROAD | | | | | | | |
| | U731 | GREENOCK WATER. FROM B743 TO A70 travel back on B743 to Sorn | | | | | | | |
| | U749 | SMIDDYSHAW. FROM B743 SORN TO B713 proceed to C65 | | | | | | | |
| 3 | U748 | HEILER. FROM C65 TO END OF ROAD turn and proceed to C65 | | | | | | | |
| | U733 | HIGH LOGAN. FROM C65 TO B705 proceed along B705 to | | | | | | | |
| | U730 | GLENSHAMROCK. FROM B705 TO C23 | | | | | | | |
| | CUMNOCK | HOYLE CR, LORIMER CR, HUNTERS WAY, BANEFIELD AVE, OAKBANK DR(PART), BROOMFIELD AVE, | | | | | | | |
| 4 | CUMNOCK | TERRINGZEAN VIEW, ROSEBURN DRIVE, KYLE COURT, HOLM, HOLMSIDE | | | | | | | |

South Route 3 Priority 3

| SECTION | ROUTE No. | DESCRIPTION |
|---------|-----------|---|
| | | Travel from Depot to Drongan |
| 1 | DRONGAN | CARSTON AVE,MAINSFORD AVE,HANNAHSTON AVE(PART),GLENCRAIG ST(PART),CAIRNSTON AVE, |
| | DRONGAN | LOMOND VIEW,LOMOND CR,CRAUFURD DR,MARGARET DRAIN CR,FARRELL CR,WATSON TERR (PART) |
| | DRONGAN | TRYSTING TERRACE,BETTOCK ROAD,HODGE CRESCENT,AILSA CRAIG VIEW,CORRIE PLACE,TRUESDALE CR, |
| | DRONGAN | LADIES WALK AVENUE, GARROWHILL DRIVE,SCHAW AVENUE, COYLE AVE, STAIR DRIVE,BONNYTON AVENUE. |
| | U741 | MILLMANNOCH. WATSON TERRACE DRONGAN TO SOUTH AYRSHIRE BOUNDARY to |
| 2 | U740 | FROM SOUTH AYRSHIRE BOUNDARY(3T WEIGHT LIMIT BRIDGE) to LADIES WALK AVENUE DRONGAN to Dalrymple |
| | U738 | MARTNAHAM. FROM A713 HOLLYBUSH TO C21 DRONGAN |
| 3 | DALRYMPLE | MERKLAND DRIVE,ROBERTSON PLACE,BARBIESTON TERRACE,SKELDON DRIVE,SKELDON CRESCENT, |
| | DALRYMPLE | PORTLAND ROAD,BIRCH AVENUE,SEATH DRIVE,CHURCH STREET,GLEBE AVENU,RIVERSIDE TERRACE, |
| | DALRYMPLE | PRIMPTON AVENUE,PURCLEWAN COURT,DOONVALE AVENUE,MORTON DRIVE,FULTON PLACE. |
| | U756 | SKELDON MILL FROM B7034 TO END |
| | U757 | GLENAMMER. FROM B7034 TO B742 |
| 4 | U758 | GLASTRON.FROM B7034 TO SKELDON BRIDGE |
| | U745 | PERCLEWAN MILL. FROM B742 TO DUSTYHALL A713 travel back to B7046 Sinclairston |
| | U74 | BARDARROCH. B7046 SINCLAIRSTON TO A70 KILLOCH travel back to Depot |
| | U717 | CREOCH FROM A70 TO C123 |
| | U714 | CAWHILLAN FROM C123 TO C49 |
| | C2 | FROM B730 TO SOUTH AYRSHIRE BOUNDARY |
| | C116 | FROM SOUTH AYRSHIRE BOUNDARY TO B730 |

South Route 4 Priority 3

| SECTION | ROUTE No. | DESCRIPTION |
|---------|------------|---|
| | | Travel from Depot to Patna |
| 1 | PATNA | DALLOWIE RD,HILLSIDE,STEWART PLACE, |
| | PATNA | CARNSHALLOCH AVENUE (PART),HILLSIDE (PART) DOONBANK CRESCENT, |
| | PATNA | DOWNIESTON PLACE,DRUMBUIE DRIVE,KILMEIN AVENUE,BARNSHEEN AVENUE,MEIKLEHOLM DRIVE, |
| | PATNA | NETHERHILL CRESCENT,DUNASKIN VIEW,KEIRS CRESCENT proceed on A713 to Dalmellington |
| | DALMEL/TON | ARMOUR WYND,BURNTON VILLAGE,C91 TO CRAIGMARK INN,KNOWEHEAD,BRADDON AVE, |
| | DALMEL/TON | DALTON AVENUE,MELLING TERRACE,CROFT STREET,WATERSIDE STREET, |
| 2 | BELLSBANK | RECAWR AVENUE,HILLCREST,MACATERICK DRIVE,,SHALLOCH PLACE |
| | U759 | LOCH DOON. FROM A713 TO END OF ROAD turn and proceed to |
| 3 | U760 | DALCAIRNEY. FROM B741 TO END OF ROAD |

South Route 5 Priority 3

| SECTION | ROUTE No. | DESCRIPTION |
|---------|-------------|---|
| | | Travel from Depot to New Cumnock |
| 1 | NEW CUMNOCK | LOCH VIEW,POLQUHEYS ROAD,MANSEFIELD HEIGHTS,CASTLEHILL,MILLAR ROAD,GLEBE STREET, |
| | NEW CUMNOCK | NITHSDALE AVENUE,WESTLANDS DRIVE,MASON AVENUE,MOUNTHOPE TERRACE,LOCHBROWN TERRACE, |
| | NEW CUMNOCK | MILRAY AVENUE,ARDNITH AVENUE,WESTPARK DRIVE,HIGHPARK AVENUE (PART),CAIRNHILL PLACE, |
| | NEW CUMNOCK | HAMILTON DRIVE,GLENAFTON DRIVE,STELLHEAD AVENUE, |
| 2 | U743 | NEWFIELD. FROM C36 TO B7046 AT GARLAFF turn left on B7046 |
| | U746 | PLUCK ROAD FROM B7046 TO C97 SKARES STATION |
| | U711 | CAIRN BRAE. FROM U743 NEWFIELD TO CAPONACRE CUMNOCK return to Depot |
| | U747 | POLQUAP ROAD. FROM A76 TO C36 |
| 3 | LOGAN | HOLMHEAD CRES,DIXON AVE,GLENMUIR CR,GLEN AVE,BAILLIE DR, |
| | CUMNOCK | CAMERON CR,CARSCAILLOCH AVE,LAMONT CR,NETHERTHIRD PLACE,CRAIGENS PLACE,PENDERS WYND |
| | CUMNOCK | PHILLIPS WYND,CAPONACRE(PART) |

South Route (Mauchline Area) Priority 3

| SECTION | ROUTE No. | DESCRIPTION | | | | | | | | |
|---------|-----------|--|--|--|--|--|--|--|--|--|
| | | | | | | | | | | |
| | C51 | MAUCHLINE PIT.FROM A76 TO FRIENDLESS HEAD U7223 | | | | | | | | |
| 1 | U723 | FRIENDLESSHEAD. FROM B774 TO B7037 | | | | | | | | |
| | C76 | FROM B744 TO B7037 | | | | | | | | |
| | U19 | FROM C76 TO B7037 | | | | | | | | |
| | U734 | AUCHMILLAN. FROM HILLHEAD TO B7037 | | | | | | | | |
| 2 | U73 | DITTON. FROM HILLHEAD U734 TO FRIENDLESSHEAD U723 | | | | | | | | |
| | U744 | OXENSHAW. FROM AUCHMILLAN TO B743 | | | | | | | | |
| | U707 | BOGHEAD FROM FRIENDLESSHEAD TO C76 | | | | | | | | |
| | U705 | BARNEIGHT &KILLOCH FROM C51 TO BOGHEAD | | | | | | | | |
| 3 | U718 | CROFTHEAD ROAD FROM B705 CATRINE TO C137 | | | | | | | | |
| | U732 | HAUGH&SYKE FROM MAUCHLINE TO A76 | | | | | | | | |
| | U714 | CAWHILLAN FROM C49 TO C124 | | | | | | | | |
| | U717 | CREOCH ROAD FROM C123 TO A70 KILLOCH | | | | | | | | |
| 4 | U734 | HILLHEAD. FROM A76 HILLTOP TO EAST HILLHEAD FARM | | | | | | | | |
| | U739 | HILLTOP. FROM JUNCTION OF EAST HILLHEAD TO B743 travel on B743 to | | | | | | | | |
| | U734 | HILLHEAD. FROM B743 TO B705 CATRINE | | | | | | | | |
| | C137 | FROM B705 JUNCTION TO B743 JUNCTION SORN turn left travel on B743 to | | | | | | | | |
| 5 | C86 | FROM B743 TO B7037 turn right to | | | | | | | | |
| | U72 | AUCHENCLOIGH FROM B7037 TO TURNING HEAD | | | | | | | | |

Appendix 8 Priority 1 Carriageway Gritting Routes - South Ayrshire Council

Meadowhead Depot in Coylton operates seven Priority 1 carriageway gritting routes, mainly but not exclusively, confined to the north of the Council area; and includes the major towns of Ayr, Prestwick and Troon.

Grangestone Depot in Girvan operates three Priority 1 carriageway gritting routes, mainly in the south of the Council area; and includes the major towns of Maybole and Girvan.

Method

Acting on advice received from the Council's weather service provider, Priority 1 routes will receive precautionary treatment prior to the onset of frost / ice.

Included within the Priority 1 routes are all A class and B class roads and strategic C class and unclassified roads.

Roads which meet the Council's criteria of precautionary treatment applied to a minimum of one road servicing council schools, and emergency service depots, plus roads servicing high concentrations of employment, commercial outlets and densely populated residential areas and other roads of strategic importance are also included.

The exception to this arrangement is when the Council's weather service provider advises that there is no risk of hazardous winter road conditions in any of the four climatic domains. In this event altered routes which exclude roads in a particular climatic domain are used.

A small number of roads within residential areas may be partly treated in order to optimise a predetermined routing system.

| Meadowhead Depot - Priority 1 Carriageway Gritting Route 1 | | | South Ayrshire Council |
|--|---|---|---|
| Town /Village | Road Number | Description | |
| - | B742 | From Meadowhead Roads Depot to A70 Hillhead Coylton | |
| Coylton | A70 | Hillhead | |
| | | Joppa | |
| | | Ayr Road | |
| - | | From Ayr Road Coylton to A77 Holmston Roundabout | |
| Ayr | | Holmston Road | |
| | | Station Roundabout | |
| | | Station Bridge Road | |
| | | Parkhouse Street | |
| | | Burns Statue Square | |
| | | A79 | Station Road |
| | John Street | | |
| | Allison Street | | |
| | New Road | | |
| | Prestwick Road | | |
| Prestwick | Ayr Road | | |
| | Main Street | | |
| | The Cross | | |
| | Monkton Road (The Cross to Airport Loop Road) | | |
| | Airport Loop Road | | |
| - | B746 | From U98 to Main Street Loans | |
| Loans | A759 | Main Street Loans | |
| | | From Main Street Loans to A78 Auchengate Interchange | |
| - | | From A78 Auchengate Interchange to East Ayrshire Council boundary at Old Rome Bridge Gatehead | |
| Gatehead | | Milton View (from Old Rome Bridge to Railway Level Crossing)* | |
| | | Main Road (from Railway Level Crossing to Cochrane Inn)* | |
| - | B750 | From A759 at Boghead to Kilmarnock Road Dundonald | |
| Dundonald | | Kilmarnock Road | |
| | - | Kilnford Drive (From Drybridge Road to A759) | |
| | | Castle Drive | |
| | | Newfield Drive (From Dundonald Primary School to Castle Drive only) | |
| | | B730 | From A759 to North Ayrshire Council boundary at south of Railway Bridge Drybridge |

* Treated on behalf of Ayrshire Road Alliance (East Ayrshire Council area)

| Meadowhead Depot - Priority 1 Carriageway Gritting Route 1 (continued) South Ayrshire Council | | |
|--|--------------------|---|
| Town /Village | Road Number | Description |
| Drybridge | B730 | Main Street (from South Ayrshire Council boundary south of Railway Bridge to Shewalton Road Drybridge)* |
| Dundonald | | Drybridge Road |
| | | Main Street |
| - | | From Main Street Dundonald to A77 at Bogend Toll |
| | | From A77 at Bogend Toll to A719 at Rabbit Wood |
| | | From A719 at Fail Toll to Croft Street Tarbolton |
| Tarbolton | | Croft Street |
| | | Cunningham Street |
| | | Montgomerie Street |
| | | From Montgomerie Street Tarbolton to B743 near Carngillan |
| - | C92 | From B730 near Caldrongill to C8 near Plewlands |
| | C8 | From A719 near Adamhill to C64 west of Main Street Craigie |
| | U80 | From B730 near Laigh Langside to C8 north of High Langside |
| | B743 | From B730 at Carngillan to B744 at Weston Brae Annbank |
| | | Weston Brae |
| Annbank | B744 | Brown's Crescent (excluding cul-de-sac between No.2 and No.31) |
| | | Weston Avenue |
| | | Goodwin Drive |
| | - | Braeside |
| | | Whitehill Crescent |
| - | B744 | From Weston Avenue Annbank to A70 at Belston |

* Treated on behalf of North Ayrshire Council under cross boundary arrangements.

| Meadowhead Depot - Priority 1 Carriageway Gritting Route 2 South Ayrshire Council | | |
|---|-------------|--|
| Town / Village | Road Number | Description |
| Ayr | B743 | Heathfield Road |
| | - | Low Road |
| | A719 | High Road |
| | | Main Road |
| | | Whitletts Road |
| | | King Street (from Whitletts Road to John Street only) |
| Prestwick | - | Hunter’s Avenue |
| | | Doon Avenue |
| | B743 | Waterloo Road (From Doon Avenue to Ayr Road) |
| - | C150 | From A77 Whitletts Roundabout to C150 St Quivox Road |
| | B743 | St Quivox Road (from B743 to A77) |
| Mossblown | B743 | From C150 St Quivox Road to B742 Sandyford Road Mossblown |
| - | B742 | Sandyford Road |
| | | From Sandyford Road Mossblown to A77 at Sandyford Toll roundabout |
| | A719 | From B742 east of Sandyford Toll roundabout across East Ayrshire Council boundary to A76 Crossroads roundabout |
| | B744 | From A76 at Crosshands across South Ayrshire Council boundary to Garden Street Tarbolton |
| Tarbolton | | Garden Street |
| | C17 | Westport (from Cunningham Street to Gallowhill Avenue) |
| | - | Gallowhill Avenue |
| | | Langlands Drive |
| | | Princes Street |
| | | Back Street |
| | | Sandgate Street |
| | | James Street |
| - | B744 | From Montgomerie Street Tarbolton to B743 south of Walston Farm |
| | B743 | From B744 at Carngillan across East Ayrshire Council boundary to Ayr Road Mauchline |
| Mauchline | | Ayr Road* |
| | | Loudoun Street* |
| - | | From B744 to Mauchline Road Mossblown |
| Mossblown | | Mauchline Road |
| - | B742 | Annbank Road from B743 Mauchline Road to B744 at Weston Smithy |

* Treated on behalf of Ayrshire Roads Alliance (East Ayrshire Council area)

Meadowhead Depot - Priority 1 Carriageway Gritting Route 3 South Ayrshire Council

| Town / Village | Road Number | Description |
|-----------------------|--------------------|---|
| Ayr | C39 | Corton Road (from A713 to A77) |
| - | A719 | Dunure Road (from Longhill Avenue Ayr southwards to C12 at Dunure Mains Farm) |
| Dunure | C12 | Castle Road |
| | | Station Road |
| - | A719 | From C12 at Dunure Mains Farm to B7023 at Pennyglen |
| | | From B7023 at Pennyglen to Kirkoswald Road Maidens |
| | | Kirkoswald Road |
| Maidens | - | Shanter Road (from Kirkoswald Road to Maidens Primary School entrance only) |
| | | Turnberry Road |
| - | A719 | From Turnberry Road Maidens to Maidens Road Turnberry |
| Turnberry | | Maidens Road |
| - | | From A77 at Bridgemill Girvan to Main Street Dailly |
| Dailly | | Main Street |
| | | Linfen Road |
| - | | From Linfen Road Dailly to Main Street Straiton |
| | | Main Street |
| Straiton | | Newton Stewart Road |
| - | C1 | Straiton - Newton Stewart Road (from Straiton to Tarlaw Bridge) |
| Straiton | B741 | Dalmellington Road (from Main Street to No.34 only) |
| | | Kirkmichael Road |
| - | B7045 | From Kirkmichael Road Straiton to Straiton Road Kirkmichael |
| | | Straiton Road |
| Kirkmichael | - | Bolestyle Road (from Straiton Road to Bolestyle Crescent (north junction only)) |
| | | Bolestyle Crescent |
| | | Woodside Avenue (from Bolestyle Crescent to Kirkmichael Primary School entrance only) |
| - | B7045 | From Straiton Road Kirkmichael to A77 at Hogg's Corner |
| Minishant | - | Mure Place |
| | | Merrick Place (to Minishant Primary School only) |
| Ayr | A79 | Maybole Road (slip lane off A77 only) |

Meadowhead Depot - Priority 1 Carriageway Gritting Route 4 South Ayrshire Council

| Town / Village | Road Number | Description |
|-----------------------|--------------------|---|
| Ayr | A713 | Dalmellington Road |
| | | Castlehill Road |
| | - | Ashgrove Street (from Castlehill Road to Dongola Road only) |
| | | Dongola Road (from Ashgrove Street to Holmston Road only) |
| | A70 | Killoch Place |
| | - | Alloway Street |
| | | High Street |
| | | Boswell Park (from Douglas Street to Carrick Street only) |
| | | Carrick Street |
| | | Fullarton Street (from Carrick Street to Douglas Street only) |
| | | Barns Street |
| | | Wellington Square |
| | | Bath Place |
| | | Pavilion Road |
| | | Esplanade (from Pavilion Road to Bath Place only) |
| | | Dalblair Road |
| | | Kyle Street |
| | | Smith Street |
| | | Mill Street |
| | A70 | Miller Road |
| | A719 | Racecourse Road |
| | | Doonfoot Road |
| | | Dunure Road (from Racecourse Road to Longhill Avenue only) |
| | - | Longhill Avenue (from Dunure Road to Cairnsmore Drive only) |
| | | Corserine Road (from Cairnsmore Drive to Newark Avenue only) |
| | | Newark Avenue (from Corserine Road to Crossburn only) |
| | | Crossburn |
| | | Browncarrick Drive (from Crossburn to Dunure Road only) |
| | | Scaur O'Doon Road (from Dunure Road to Abbots Way only) |
| | | Abbots Way (from Scaur O'Doon Road to Greenan Way only) |
| | | Greenan Way |
| | | Greenan Road (from Greenan Way to Earls Way only) |
| | | Earls Way |
| | | Longhill Avenue (from Cairnsmore Drive to High Maybole Road) |
| | | The Loaning |
| | | Lauchlanglen Road |
| | | Finlas Avenue |
| | | Carcluie Crescent |
| | | Shielhill |
| | | Braden Drive |
| | | Bathurst Drive |
| | | Merkland Road |
| | | Kerspark (from Merkland Road to Maybole Road only) |
| | | Kincaidston Drive |

Meadowhead Depot - Priority 1 Carriageway Gritting Route 4 (continued) South Ayrshire Council

| Town / Village | Road Number | Description |
|-----------------------|--------------------|---|
| Ayr | - | Snowdrop Square |
| | | Hillfoot Road (from Holmston Road to Holmston Drive) |
| | | Holmston Drive (from Hillfoot Road to Caledonia Road) |
| | | Caledonia Road (from Holmston Drive to Armour Drive) |
| | | Armour Drive |
| | | Glencairn Road (from Armour Drive to Holmston Drive) |
| | | Holmston Drive (from Glencairn Road to Caledonia Road) |
| | | Hillfoot Road (from Holmston Drive to Dalmellington Road) |
| | | Belmont Road |
| | B7024 | Monument Road |
| | | Alloway |
| | - | Doonholm Road (from Murdoch's Lone to Alloway) |
| | | Greenfield Avenue |
| | | Cunning Park Drive |
| | | Gearholm Road |
| | | Racecourse View |
| | | Corsehill Road |
| | | Midton Road (from Carrick Road to Ronaldshaw Park) |
| | | Ronaldshaw Park |
| | | Blackburn Road |
| | | Blackburn Drive (from Blackburn Road to Seafield Road) |
| | | Seafield Road |
| | | Lochlea Drive |
| | | Forehill Road (from Lochlea Drive to Hillfoot Road) |
| | | Shavin Brae (from Hillfoot Road to Crofthead Road) |
| | | Crofthead Road |
| | | Rowan Crescent (from Crofthead Road to Pine Brae) |
| Coylton | - | Barclaugh Drive |
| | | Woodhead Road (from Barclaugh Drive to Drumcoyle Drive) |
| | | Drumcoyle Drive (from Woodhead Road to No.5) |
| | | The Beeches (from Joppa to Broadwood) |
| | | Broadwood |
| | | Highpark Road |
| | | St Brides Way |
| | | Garvine Road |
| | | Laighpark Road (from Garvine Road to Ayr Road) |

Meadowhead Depot – Priority 1 Carriageway Gritting Route 5 South Ayrshire Council

| Town / Village | Road Number | Description |
|-----------------------|--------------------|--|
| - | B746 | From A78 Loans off slip road to U98 Corraith Road |
| | U98 | From B746 to U99 |
| | U99 | From U98 to Townend Road Symington |
| Symington | U99 | Townend Road |
| | | Main Street |
| | - | Symington Road North (from Main Street to bus turning circle) |
| | | Bus turning circle at Symington Road North |
| | C39 | Symington Road South (from Main Street to access road to Stockbridge Farm) |
| | - | Brewlands Road |
| | | Mount Avenue (from Brewlands Road to Lawhill Road only) |
| | | Lawhill Road |
| | | Brewlands Crescent (from Lawhill Road to Brewlands Road only) |
| - | C39 | From Brewlands Road Symington to B730 at Coodham |
| | B751 | From B730 at Coodham to A759 at Old Rome |
| | C128 | Harperland Road (from A759 to B730 |
| | C32 | Old Loans Road (from B730 Main Street Dundonald to A759 Main Street Loan) |
| Troon | - | Central Avenue |
| | | North Drive (from Central Avenue to Buchan Road only) |
| | | Buchan Road (from North Drive to Scott Crescent) |
| | | Burns Road (from Buchan Road to Scott Crescent only) |
| | | Scott Crescent |
| | | Deveron Road |
| | | Staffin Road (from Deveron Road to Garry Place only) |
| | | Garry Place (from Staffin Road to Sark Drive only) |
| | | Sark Drive |
| | | Euchan Place |
| | B746 | Kilmarnock Road |
| | | Beach Road |
| | - | Burnfoot Avenue |
| | | Kyle Drive |
| | | Walker Avenue |
| | | Muir Drive |
| | | Barassiebank Lane |
| | B746 | North Shore Road |
| | - | Barassie Street |
| | | Burnside Place |
| | | St Meddans Street (from South Beach to Barassie Street only) |
| | | Church Street |
| | | Bentinck Drive (from St Meddans Street to Yorke Road only) |
| | | Victoria Drive (form Bentinck Drive to Golf Crescent only) |
| | | Golf Crescent |
| | | Yorke Road (from Bentinck Drive to Fullarton Drive only) |

Meadowhead Depot - Priority 1 Carriageway Gritting Route 5 (Continued) South Ayrshire Council

| Town / Village | Road Number | Description |
|-----------------------|--------------------|---|
| Troon | - | Harling Drive |
| - | B746 | From A759 Main Street Loans to U98 Corraith Road |
| Prestwick | - | Monkton Road (from Shawfarm Roundabout to Welsh Road) |
| | | Shawfarm Road (from A79 to Marsmount Road) |
| | | Marsmount Road |
| | | Monument Crescent (from Marsmount Road to Shaw Road) |
| | | Shaw Road (from Monument Crescent to Shawfarm Road) |
| | | Shaw Road (from Shawfarm Road to Sherwood Road) |
| | | Sherwood Road (from Shaw Road to Outdale Avenue) |
| | | Outdale Avenue |
| | | Marchburn Avenue |
| | | Indale Avenue |
| | | Outdale Avenue |
| | | Briarhill Road |
| | | Crofthead Road |
| | | Alexandra Avenue |
| | | Caerlaverock Road |
| | | Sandfield Road |
| | | Bellevue Road (from Sandfield Road to Adamton Road North) |
| | | Biggart Road |
| | | East Road (from Biggart Road to St Quivox Road) |
| | | St Quivox Road |
| | | Adamton Road North |
| | | Adamton Road South (from Biggart Road to Auchencruive Avenue) |
| | | Auchencruive Avenue |
| | | St Andrew's Avenue (from Auchencruive Avenue to Biggart Road) |
| | | East Road (from Biggart Road to Heathfield Road) |
| | | Hunter's Avenue |
| | | Afton Avenue |
| | | Adamton Road South (from Afton Avenue to Auchencruive Avenue) |
| | | Bellevue Road (from Sandfield Road to Main Street) |
| | | Crandleyhill Road |
| | | Nursery Avenue |
| | | Kirkhill Crescent |
| Ayr | - | Hunters Avenue |
| | | Northfield Avenue |
| | | St Georges Avenue |
| | | McCalls Avenue |
| | | Walker Road |

| Meadowhead Depot - Priority 1 Carriageway Gritting Route 6 South Ayrshire Council | | |
|---|-------------|--|
| Town / Village | Road Number | Description |
| - | B742 | From Meadowhead Roads Depot to B744 at Weston Brae |
| Tarbolton | B744 | Burns Street |
| | C17 | Westport |
| - | | From Westport Tarbolton to A719 near Torcross |
| Ayr | - | Maryfield Road |
| | | Annpit Road (from Maryfield Road to Seaforth Road) |
| | | Viewfield Road (from New Road to Russell Drive) |
| | | Russell Drive |
| | B747 | Craigie Road |
| | - | Craigie Way |
| | | Hayhill |
| | | Mainholm Road |
| | | Low Road (from High Road to James Campbell Avenue) |
| | | James Campbell Avenue |
| | | Glenmuir Road |
| | | Sloan Street (from Glenmuir Road to Ferguson Street) |
| | | Ferguson Street (from Sloan Street to Galloway Avenue) |
| | | Galloway Avenue |
| | | Waggon Road |
| | | York Street |
| | | North Harbour Street |
| | | Chalmers Road |
| | | Belmont Avenue |
| | | Fenwickland Avenue |
| | | Peggieshill Road |
| | | Annfield Glen Road |
| | | Burnbank Road |
| - | U116 | University Hospital Ayr Access Road |
| Coylton | - | Carbieston Avenue (from A70 to Lorne Terrace only) |
| - | B730 | From Stair Inn to B743 at Carngillan |
| Mossblown | - | Acron Avenue |
| | | Drumley Drive |
| | | Station Road (from Annbank Road to Mossgreen Place) |
| | | Mossgreen Place |
| | | Afton Avenue |
| | | Church Drive |

Meadowhead Depot - Priority 1 Carriageway Gritting Route 7 South Ayrshire Council

| Town / Village | Road Number | Description |
|----------------|-------------|---|
| - | A713 | From B742 to A77 Bankfield roundabout |
| Ayr | A79 | Maybole Road |
| | | St Leonards Road |
| | | Carrick Road |
| | | Beresford Terrace |
| | | Killoch Place (from Beresford Terrace to Miller Road only) |
| | A70 | Miller Road |
| | A719 | Alloway Place |
| | | Wellington Place |
| | | Fort Street |
| | C146 | South Harbour Street (from Fort Street to South Beach Road) |
| | - | South Beach Road |
| | A719 | South Harbour Street (from Fort Street to New Bridge Street) |
| | | New Bridge Street |
| | | Sandgate |
| | - | Fullarton Street |
| | | Douglas Street |
| | | Boswell Park (from Douglas Street to Sandgate only) |
| | | Main Street (from King Street to Waggon Road only) |
| | | New Road (bus corridor only) |
| - | B739 | From A719 to Tarbolton Road Monkton |
| Monkton | | Tarbolton Road |
| | | Baird Road |
| | | Kilmarnock Road (from Baird Road to Main Street) |
| - | C15 | Main Street |
| | C1 | From Main Street Monkton to A78 Monktonhead roundabout |
| Monkton | C1 | From A77 Dutch House roundabout to Kilmarnock Road Monkton |
| | C1 | Kilmarnock Road (From 30 mph signs to Baird Road) |
| Troon | B739 | Station Road |
| | B749 | Monktonhill Road |
| | C52 | Southwood Road |
| | B749 | Craigend Road |
| | | South Beach |
| | | Ayr Street |
| | - | Templehill |
| | | Link Road to Harbour Road |
| | B746 | Harbour Road |
| | | Port Ranald Drive |
| | - | Jubilee Road |
| | A759 | Portland Street |
| | | Dundonald Road |
| Loans | | Troon Road |
| - | B730 | From A77 northbound off slip road to B730 roundabout at Coodham |

| Meadowhead Depot - Priority 1 Carriageway Gritting Route 7 (continued) | | |
|--|-------------|--|
| Town / Village | Road Number | Description |
| - | C39 | Symington Road South (from A77 southbound off slip road via overbridge to access road to Stockbridge Farm) |
| | C74 | From A70 to B742 |
| | U77 | From B742 to Hole Road Coylton |
| Coylton | - | Hole Road |

| Grangestone Depot - Priority 1 Carriageway Gritting Route 1 South Ayrshire Council | | |
|--|-------------|---|
| Town / Village | Road Number | Description |
| Girvan | - | Ladywell Avenue |
| - | A714 | From A77 Shalloch Park Roundabout Girvan to U52 Muck Road Pinwherry |
| | U52 | From A714 to Pinwherry Community Centre |
| | A714 | From U52 Muck Road to C72 Gowlands Terrace Barrhill |
| Barrhill | C72 | Gowlands Terrace Barrhill |
| - | | From Gowlands Terrace Barrhill to Barrhill Railway Station |
| Barrhill | A714 | Main Street |
| - | | From Main Street Barrhill to Dumfries and Galloway Council boundary at Wheeb Bridge |
| | | B7027 |
| Girvan | B7035 | Coalpots Road (from A77 Shalloch Park roundabout to Piedmont Road) |
| | - | Piedmont Road (from Coalpots Road to Mote Hill Road) |
| | | Mote Hill Road |
| | | South Park Avenue (from Mote Hill Road to Wreck Road) |
| | | Wreck Road |
| | | Piedmont Road (from Dalrymple Street to Mote Hill Road) |
| | B7035 | Coalpots Road (from Piedmont Road to South Park Avenue) |
| | - | South Park Avenue (from Coalpots Road to Mote Hill Road) |
| | | Victory Park Road (from South Park Road to Wesley Road) |
| | | Wesley Road |
| | B7035 | Coalpots Road (from South Park Avenue to The Avenue) |
| | - | The Avenue |
| | B7022 | Church Square |
| | | Hamilton Street |
| | | Montgomerie Street |
| | B7035 | Coalpots Road (from The Avenue to B734 at Brae Toll) |
| | - | Bridge Street (from A77 to Newton Kennedy Bridge) |
| Newton Kennedy | | |
| Newton Place | | |
| Golf Course Road (Newton Place to A77) | | |

| Grangestone Depot - Priority 1 Carriageway Gritting Route 2 South Ayrshire Council | | |
|--|-------------|--|
| Town / Village | Road Number | Description |
| - | B734 | From A714 at Hallowchapel to Main Street Colmonell |
| Colmonell | | Main Street |
| | | Rowantree Street |
| - | | From Rowantree Street Colmonell to C121 at Liggetcheek |
| | C121 | From B734 at Liggetcheek to A77 near Bennane |
| | B734 | From A77 at Redburn House to C121 at Liggetcheek |
| Ballantrae | C59 | From B734 at Knockdollar to Mains Road Ballantrae |
| | | Mains Road |
| | - | The Vennel |
| | | Foreland (from The Vennel to Shore Road) |
| | | Shore Road |
| - | C45 | From A77 south of Ballantrae Bridge to Craigneil Road Colmonell |
| | | Craigneil Road |
| Colmonell | - | Haddows Row |
| | | Kirkhill Crescent |
| - | C81 | From B734 at Jubilee Bridge to A713 north of Daljarrock Bridge |
| | B734 | From A713 at Pinmore Bridge to Stinchar Road Barr |
| Barr | - | Stinchar Road |
| | | Changue Road (from Glenginnet Road to Barr Primary School) |
| | U66 | Glenginnet Road (from Stinchar Road to No.85) |
| | | From Glenginnet Road Barr to U27 at South Balloch |
| | B734 | From Stinchar Road Barr to B7035 at Old Dailly |
| | B7035 | From B734 at Old Dailly to B741 Linfern Road Dailly |
| Dailly | C151 | Bridge Street |
| | | Woodside |
| | C30 | From B7035 at Lovestone to B734 at Penkill |
| | B734 | From B7035 at Old Dailly to A77 at Bridge Mill Roundabout Girvan |

| Grangestone Depot - Priority 1 Carriageway Gritting Route 3 South Ayrshire Council | | |
|--|-------------|--|
| Town / Village | Road Number | Description |
| - | C29 | From B741 at Lochmodie Bridge to Dailly Road Maybole |
| Maybole | | Dailly Road |
| | - | Ladywell Road |
| | | Society Street |
| | | Abbot Street |
| | | Kirkland Street |
| | | Redbrae |
| | | Cargill Road |
| | | Cargill Avenue |
| | | Kilzenie View |
| | | Elms Drive (from Cargill Avenue to Elms Crescent) |
| | | Elms Crescent |
| | | Ashgrove (excluding cul-de-sac between No.16 and No.18) |
| | | Ashgrove Avenue |
| | | Gardenrose Path (from Cargill Road to Fineview Place) |
| | | Minnoch Crescent |
| | | Kildoon Drive (excluding cul-de-sacs) |
| | | Kincraig Avenue |
| | | Queen's Terrace |
| | | Burns Drive |
| | | Gallowhill Avenue |
| | | McAdam Way (excluding cul-de-sac between No.33 and No.55) |
| | | Whitefaulds Avenue |
| | | Mochrum Avenue (excluding cul-de-sac between No.10 to No.32) |
| | | Whitefaulds Crescent |
| | | Ladyland Road |
| | | Coral Glen |
| | | Welltrees Street |
| | | Carrick Street |
| | | Greenside |
| | | John Knox Street |
| | B7023 | St Cuthbert Road |
| | B7024 | Barns Road |
| - | B7023 | Crosshill Road |
| | | From Crosshill Road Maybole to King Street Crosshill |
| | | King Street |
| Crosshill | B7023 | Dailly Road |
| - | | From Dailly Road Crosshill to B741 at Rowanston Toll |
| - | C88 | From B741 at Cloyntie Toll to Dalhowan Street Crosshill |
| | | Dalhowan Street |
| Crosshill | - | Milton Street |
| | | Kirkbride Crescent |
| | | Carrick Drive |
| - | C31 | Kirkmichael Road (from Carrick Drive to Dalhowan Street) |

| Grangestone Depot - Priority 1 Carriageway Gritting Route 3 (continued) | | |
|---|---------------|--|
| Town / Village | Road Number | Description |
| - | B742 | From A77 at Nether Culzean to Dalrymple Bridge |
| Dalrymple | | Main Street (from Dalrymple Bridge to Garden Street)* |
| - | B7034 | Garden Street (from Main Street to South Ayrshire Council boundary at Purclewan Burn)* |
| - | | From East Ayrshire Council boundary at Purclewan Burn to A77 near Carcluie House. |
| Ayr | C39 | Doonholm Road (from A77 to Murdoch's Lone) |
| | | Murdoch's Lone |
| - | B7024 | Alloway (from Murdoch's Lone to High Maybole Road) |
| - | | High Maybole Road (from Alloway Ayr to Alloway Road Maybole) |
| Maybole | | Alloway Road |
| | Barns Terrace | |
| - | B7023 | Culzean Road |
| - | | From Culzean Road Maybole to A719 at Pennyglen |

* Treated on behalf of Ayrshire Roads Alliance (East Ayrshire Council area)

Appendix 9 Priority 2 Carriageway Gritting Routes – South Ayrshire Council

Meadowhead Depot - Priority 2 Carriageway Gritting Route 1

1

Travel, leaving the depot, left **B742**, left **C116** at Bridgend Cottage, **Start Gritting.** **0.56kms**

2

Grit, left **C116** at Bridgend Cottage to junction with Drumcoyle Drive Coylton, **Stop Gritting.** **1.85kms**

3

Travel, via Woodhead Road and Barclaugh Drive Colton right into **A70**, fourth right into **C2** Belston - Woodside - Stair Road, **Start Gritting.** **2.61kms**

4

Grit, **C2** to junction with **B730** south west of Stair, **Stop Gritting.** **6.50kms**

5

Travel, left **B730**, across East Ayrshire Council boundary at Stair Bridge right into **C94** at Yett, **Start Gritting.**
1.61kms

6

Grit, **C94**, continue gritting across **B743** and to junction with **B730** south of Tarbolton, **Stop Gritting.**
2.55kms

7

Travel, right into **B730**, left into **C17** Torcross Road and left into **C107** Neilshill Road, **Start Gritting.**
2.98kms

8

**Grit, C107 Neilshill Road to junction with B743 Mauchline Road Mossblown, Stop Gritting.
2.28kms**

9

Travel, left B743, left B744, cross-over B730 into C115 Parkmill Road, Start Gritting. 3.66kms

10

Grit, C115 Parkmill Road to junction with C114 Largie Road, right into C114 Largie Road to junction with B743 east of Failford, Stop Gritting. 4.92kms

11

Travel, turn at a safe and convenient location and return on C114 Largie Road to the junction with C115 Parkmill Road, Start Gritting. 1.49kms

12

Grit, C114 Largie Road, to B744 at Largietoll Cottage and turn left, Stop Gritting. 1.57kms

13

Travel, left into B744 and right into C63 Lochlea Road, Start Gritting. 0.21kms

14

Grit, C63 Lochlea Road to junction with A719 east of Fairwells, Stop Gritting. 2.90kms

15

Travel, right into A719, left into C53 Carnell House - Gatehead Road at Fiveway House, Start Gritting. 1.83kms

16

Grit, C53, left into C119 Maintree - Howcommon Road and grit to junction with C64 Main Street Craigie, Stop Gritting. 3.71kms

17

Travel, *C64* onto *U80* High Langside Road, right into *B730* and left *C138* Langlands - Underhills Road, **Start Gritting. 3.33kms**

18

Grit, *C138* Langlands - Underhills Road to *A77* south of Hansel Village, **Stop Gritting. 4.79kms**

19

Travel, turn at a safe and convenient location and return along *C138*, right into *C106* Adamton Mains Road, **Start Gritting. 0.54kms**

20

Grit, *C106* Adamton Mains Road to junction with *B739*, **Stop Gritting. 2.28kms**

21

Travel, right into *B739* into Monkton (Baird Road), right into Kilmarnock Road to *A77* at Dutch House roundabout. Travel southbound on *A77* to *A77* Whitletts Roundabout, left into *B743* and right into *C37* Auchincruive Road, **Start Gritting. 10.44kms**

22

Grit, *C37* Auchencruive Road to junction with *B744* at Broadhead, **Stop Gritting. 2.93kms**

23

Travel, right *B744*, left *A70* then right into *C105* Knocksoul Road, **Start Gritting. 1.78kms**

24

Grit, *C105* Knocksoul Road to junction with *C74* Macnairston Road and turn right, **Stop Gritting. 1.47kms**

25

Travel, right into **C74** Macnairston Road, left into **C39** Sessionfield Road, **Start Gritting.**
0.41kms

26
Grit, C39 Sessionfield Road to junction with **A713** at Mosshill turn right, **Stop Gritting.**
2.67kms

27
Travel, right into **A713**, left into **C39 Corton Road** left into **A77**, left into **B7034**, left into **C73** Pleasantfield Road at Carcluie Farm, **Start Gritting.**
5.70kms

28
Grit, C73 Pleasantfield Road to junction with **C39 Corton Road**, turn right, **Stop Gritting.**
2.49kms

29
Travel, right into **C39 Corton Road**, right into **A713**, continue traveling on **A713** across East Ayrshire Council boundary to junction with **C21** Craigs Road at Milreoch turn left, **Start Gritting.**
6.29kms

30
Grit, C21 Craigs Road across South Ayrshire Council boundary to junction with **B742** at Low Colton turn right, **Stop Gritting.**
8.35kms

31
Travel, right into **B742**, right into **A70**, left Carbieston Avenue Coylton at Lorne Terrace junction, **Start Gritting.**
0.62kms

32
Grit Carbieston Avenue, left into Corsehill Crescent, Craig View, right Carbieston Avenue to Corsehill Crescent junction, **Stop Gritting.**
0.51kms

33

Travel, along Carbieston Avenue, right into *A70*, left into *B742* and return to Depot. **Route Ends.**
0.87kms

Total route length: 103.029kms.

Total length gritted: 55.092kms (53%)

Total length free travel: 47.937kms (47%)

Meadowhead Depot - Priority 2 Carriageway Gritting Route 2

1

Travel, via **B742** and **A70** to **A77** Holmston roundabout, take second exit into **A70** Holmston Road, left Hillfoot Road, left Masonhill Road, **Start Gritting.** **8.18kms**

2

Grit, Masonhill Road, right Cedar Road, right into Spruce Park, right into Holly Bank, right into Cedar Road and continue gritting after Spruce Park. Left Briar Grove, left Willow Park, right Larchwood Road, left Roman Road, right **A713** Dalmellington Road, **Stop Gritting.** **2.17kms**

3

Travel, **A713** Dalmellington Road, left Belmont Road, left Nursery Road, **Start Gritting.** **0.73kms**

4

Grit, Nursery Road, right Peggieshill Road, **Stop Gritting.** **0.16kms**

5

Travel, Peggieshill Road, left Annfield Glen Road, left Glendale Crescent, **Start Gritting.**
0.18kms

6

Grit, Glendale Crescent, left Annfield Glen Road, **Stop Gritting.** **0.85kms**

7

Travel, right Burnbank Road, right Fenwickland Avenue, left Belmont Road, across **A79** Maybole Road, into Ewenfield Road, **Start Gritting.** **0.79kms**

8

Grit, Ewenfield Road, right *B7024* Monument Road, Stop Gritting. 0.44kms

9

Travel, *B7024* Monument Road, right Ewenfield Avenue, Start Gritting. 0.19kms

10

Grit, Ewenfield Avenue, left Ewenfield Road, Stop Gritting. 0.39kms

11

Travel, left *A79* St. Leonards Road, left Bellevale Road, Start Gritting. 0.11kms

12

Grit, Bellevale Road, right *B7024* Monument Road, Stop Gritting. 0.37kms

13

Travel, *B7024* Monument Road, left Corsehill Road, Racecourse View, left *A719* Doonfoot Road, *A719* Dunure Road, left Longhill Avenue, left Lamford Drive, Start Gritting. 3.44kms

14

Grit, Lamford Drive, left Glenalla Crescent, Craigstewart Crescent, left Lamford Drive, Stop Gritting. 1.32kms

15

Travel, right Longhill Avenue, right *A719* Dunure Road, right Greenfield Avenue, right Mount Charles Crescent, Start Gritting. 1.46kms

16

Grit, Mount Charles Crescent (until it rejoins Mount Charles Crescent), right Greenfield Avenue, Stop Gritting. **0.76kms**

17

Travel, Greenfield Avenue, right Baird Road, Start Gritting. **0.55kms**

18

Grit, Baird Road, right Cairn Crescent, right Baird Road, left Cambusdoon Drive, Stop Gritting. **0.78kms**

19

Travel, left Cambusdoon Drive, at Baird Road, Start Gritting. **0.26kms**

20

Grit, Cambusdoon Drive from Baird Road to *B7024* Alloway, left *B7024* Alloway, Stop Gritting. **0.35kms**

21

Travel, *B7024* Alloway, right Doonholm Road, left The Loaning, right Woodend Road, Start Gritting. **0.66kms**

22

Grit, Woodend Road, right The Loaning, Stop Gritting. **0.80kms**

23

Travel, The Loaning, Laughlanglen Road, right Whin Hill Road, Start Gritting. **0.85kms**

24

Grit, Whin Hill Road, left A79 Maybole Road, Stop Gritting.

0.42kms

25

Travel, A79 Maybole Road, left Laughlanglen Road, right Taybank Drive, Start Gritting.

0.48kms

26

Grit, Taybank Drive, right Sunningdale Avenue, left Longbank Drive, left Longbank Road, right B7024 Monument Road, Stop Gritting.

1.12kms

27

Travel, B7024 Monument Road, right Ewenfield Road, across A79 Maybole Road, Belmont Road, left Belmont Avenue, right Belmont Drive, Start Gritting.

0.86kms

28

Grit, Belmont Drive, onto left Meadow Park Drive, onto Chalmers Avenue, right Belmont Avenue, Stop Gritting.

0.89kms

29

Travel, Belmont Avenue, right Chalmers Road, Lochlea Drive, left St. Phillans Avenue, Start Gritting.

0.92kms

30

Grit, St. Phillans Avenue, right Leslie Crescent, left St. Andrews Street, right A713 Castlehill Road, Stop Gritting.

0.93kms

31

Travel, A713 Castlehill Road onto A79 Station Road, B747 Craigie Road, left Craigie Avenue, Start Gritting.

1.02kms

32

Grit, Craigie Avenue, Albert Terrace, right **A79** John Street, **Stop Gritting.** **0.34kms**

33

Travel, **A79** John Street, right Elba Street, **Start Gritting.** **0.24kms**

34

Grit, Elba Street, left James Street, left George Street, right Limonds Wynd, left **A719** King Street, **Stop Gritting.** **0.43kms**

35

Travel, right **A79** Allison Street, **A79** New Road, **A79** Tams Brig, **A79** Prestwick Road, right Seaforth Road, **Start Gritting.** **1.70kms**

36

Grit Seaforth Road, 5th right East Park Road, left Hunter's Avenue, **Stop Gritting.** **1.15kms**

37

Travel, Hunter's Avenue, 2nd left Cambuslea Road, **Start Gritting.** **0.15kms**

38

Grit Cambuslea Road, right West Sanquhar Road, left, right, Somerset Road, left Back Hawkhill Avenue, left Wilson Street, right Lawson Street, right Lochside Road, right Back Hawkhill Avenue, left Hawkhill Avenue to **A719** Whitletts Road, **Stop Gritting.** **2.67kms**

39

Travel, right **A719** Whitletts Road, left **B747** Craigie Road, left Craigie Way, continue on Craigie Way to Churchill Crescent, **Start Gritting.** **1.88kms**

40

Grit, Churchill Crescent, left Hayhill, **Stop Gritting.** **0.38kms**

41

Travel, Hayhill, Mainholm Road, right Westwood Avenue, **Start Gritting.** **1.05kms**

42

Grit, Westwood Avenue, continue left Thornyflat Road, at **A719** Whitletts Road, **Stop Gritting.**
1.35kms

43

Travel, Low Road, left **B743** Heathfield Road, right East Road, right Semple Road, **Start Gritting.**
2.01kms

44

Grit, Semple Road, left at second entrance to Obree Avenue, left Semple Road, right Pentland Drive, left Semple Road, **Stop Gritting.**
1.69kms

45

Travel, right East Road, left St. Quivox Road, to junction with Adamton Road North, **Start Gritting.**
1.92kms

46

Grit, St. Quivox Road, left **A79** Main Street, **Stop Gritting.** **0.68kms**

47

Travel, left **A79** Main Street, right Grangemuir Road, **Start Gritting.** **0.19kms**

48

Grit, Grangemuir Road, right Midton Road, right Station Road, to junction with **A79** The Cross, left **Stop Gritting.**
0.86kms

49

Travel, A79 The Cross, right Alexandra Avenue, right Caerlaverock Road, left Berelands Road onto Sherwood Road to junction with Outdale Avenue, **Start Gritting.** **1.19kms**

50

Grit, Sherwood Road, left Glenburn Road, left Shawfarm Road, Stop Gritting. **0.50kms**

51

Travel, via Shawfarm Road, **A79, A78, A77 (southbound), A70** and **B742** to Depot. **End of Route.**
21.19kms

Total route length: 73.96kms.

Total length gritted: 21.76kms (29%)

Total length free travel: 52.20kms (71%)

Meadowhead Depot - Priority 2 Carriageway Gritting Route 3

1

Travel, leaving the depot, right **B742**, via **A70, A77, A78, A79, B749** Monktonhill Road, **B749** Craigend Road, right Fullarton Drive, **Start Gritting.** **20.22kms**

2

Grit, Fullarton Drive, left Eglinton Crescent, onto Fullarton Crescent, onto Wemyss Crescent, left Fullarton Drive, **Stop Gritting.** **2.16kms**

3

Travel, Fullarton Drive, left Lochend Road, **Start Gritting.** **0.11kms**

4

Grit, Lochend Road, left Bentinck Drive, left Bentinck Crescent, right Bentinck Drive, to Bentinck Crescent, **Stop Gritting.** **1.30kms**

5

Travel, Bentinck Drive, left Lochend Road, **Start Gritting.** **0.11kms**

6

Grit, Lochend Road, left **B749** South Beach, **Stop Gritting.** **0.18kms**

7

Travel, **B749** South Beach, left **B749** Craigend Road, left Bentinck Drive, **Start Gritting.** **0.50kms**

8

Grit, Bentinck Drive to junction with Bentinck Crescent, **Stop Gritting.** **0.17kms**

9

Travel, Bentinck Drive to junction of Lochend Road, **Start Gritting.**

.26kms

10

Grit, Bentinck Drive to Yorke Road, **Stop Gritting.**

0.32kms

11

Travel, Bentinck Drive, right St. Meddan's Street, at junction with Barassie Street, **Start Gritting.**
0.69kms

12

Grit, St. Meddan's Street, Logan Drive, right Donald Avenue, right Brown Avenue, to junction with Logan Drive, **Stop Gritting.**
1.23kms

13

Travel, left Logan Drive, left Wallacefield Road, **Start Gritting.**

0.19kms

14

Grit Wallacefield Road, right Donald Crescent, to junction with **A759** Dundonald Road, **Stop Gritting.**
0.53kms

15

Travel, **A759** Dundonald Road, right Ottoline Drive, **Start Gritting.**

0.54kms

16

Grit, Ottoline Drive, right Lady Margaret Drive, left Balcomie Crescent, right Lady Margaret Drive, left Wilson Avenue, right Hunter Crescent, left Wilson Avenue to junction with Lady Margaret Drive, **Stop Gritting.**
2.89kms

17

Travel, Wilson Avenue to junction with Hunter Crescent, Start Gritting. 0.39kms

18

Grit, Wilson Avenue, left A759 Dundonald Road, Stop Gritting. 0.17kms

19

Travel, A759 Dundonald Road, right Logan Drive, left Brown Avenue, Start Gritting. 1.25kms

20

Grit, Brown Avenue, right Brodie Avenue, left Hawthorn Place, Stop Gritting. 0.42kms

21

Travel, turn at a safe and convenient location, Brodie Avenue, left Brown Avenue, right Logan Drive, right Gillies Street, Start Gritting 0.53kms

22

Grit, Gillies Street to A759 Dundonald Road turn left, Stop Gritting. 0.35kms

23

Travel, A759 Dundonald Road, left Logan Drive, to junction with Donald Crescent, Start Gritting. 0.62kms

24

Grit, Logan Drive, left Campbell Drive, right Fraser Avenue, Logan Drive at junction with Campbell Drive, Stop Gritting. 1.10kms

25

Travel, Logan Drive, left Kenmore, Start Gritting. 0.14kms

26

Grit, left Kenmore, right Marr Drive, left Logan Drive, **Stop Gritting**.

0.54kms

27

Travel, Logan Drive, right **A759** Dundonald Road, Portland Street, right Barassie Street, right **B746** North Shore Road, to junction with Walker Avenue, **Start Gritting**.

1.99kms

28

Grit, right Walker Avenue, right Johnston Drive, left Queens Drive, left Barassiebank Lane, right Burnfoot Road, right **B746** Beach Road, **Stop Gritting**.

1.52kms

29

Travel, **B746** Beach Road to junction with **B746** Kilmarnock Road, **Start Gritting**.

0.40kms

30

Grit, Beach Road, right Hillhouse Road, left Gailes Road, onto Firth Road, right Arran Road, right Beach Road, right Kilkerran Drive, right Firth Road, left Carrick Road, right Gailes Road, right Arran Road, left Beach Road to junction with Hillhouse Road, **Stop Gritting**.

3.41kms

31

Travel, left Hillhouse Road, right Hillhouse Gardens, **Start Gritting**.

0.17kms

32

Grit, Hillhouse Gardens to Railway Station entrance, **Stop Gritting**.

.25kms

33

Travel, turn at a safe and convenient location, return on Hillhouse Gardens, left Hillhouse Road, left Beach Road, left **B746** Kilmarnock Road, left Lang Road, **Start Gritting.** **1.58kms**

34

Grit, Lang Road, right Lochgreen Avenue, left Auchengate, right Lochgreen Avenue, right Lang Road, left Goatfell View, right Adams Gate, first entrance left, to Links Crescent, right Adams Gate, to Links Crescent junction, **Stop Gritting.** **1.17kms**

35

Travel, Adams Gate, left Goatfell View to Lang Road junction, **Start Gritting.** **0.17kms**

36

Grit Goatfell View, right Whins Road, right Lang Road, **Stop Gritting.** **0.23kms**

37

Travel, Lang Road, left Westward Way, **Start Gritting.** **0.07kms**

38

Grit, Westward Way, right Lang Road, **Stop Gritting.** **0.19kms**

39

Travel, Lang Road, right **B746** Kilmarnock Road, left Deveron Road, right Milton Crescent, **Start Gritting.** **0.51kms**

40

Grit, Milton Crescent until it rejoins Milton Crescent, **Stop Gritting.** **0.49kms**

41

Travel, Milton Crescent, right Deveron Road, right Calder Avenue, **Start Gritting.** **0.36kms**

42

Grit, Calder Avenue, right Coyle Park to end, **Stop Gritting.** **0.39kms**

43

Travel, turn at a safe and convenient location, Coyle Park, left Calder Avenue, right Deveron Road, left Dornal Drive, **Start Gritting.** **0.47kms**

44

Grit, Dornal Drive, right Spallander Road, left Deveron Road, **Stop Gritting.** **0.45kms**

45

Travel, left Deveron Road, left Lugar Place, **Start Gritting.** **0.49kms**

46

Grit, Lugar Place, right Spey Road, left Deveron Road, **Stop Gritting.** **0.45kms**

47

Travel, Deveron Road, left North Drive to junction with Afton Gardens, **Start Gritting.** **0.32kms**

48

Grit, North Drive, right Aldersyde Avenue, right Lochlea Avenue, left West Crescent, left Central Avenue, **Stop Gritting.** **0.99kms**

49

Travel, left Central Avenue right Merrick Avenue, **Start Gritting.** **0.16kms**

50

Grit, Merrick Avenue, left Mossgiel Avenue, left Lochlea Drive, **Stop Gritting.** **0.27kms**

51

Travel, Lochlea Drive, left West Crescent, left Merrick Avenue, **Start Gritting.** **0.40kms**

52

Grit, Merrick Avenue, right Central Avenue, **Stop Gritting.** **0.12kms**

53

Travel, Central Avenue, left **A759** Dundonald Road, onto **A759** Troon Road, left Collins Drive Loans, **Start Gritting.** **1.14kms**

54

Grit, Collins Drive, right Craikslan Place to end, **Stop Gritting.** **0.45kms**

55

Travel, turn at a safe and convenient location, left Collins Drive, left Kyle Crescent, **Start Gritting.** **0.20kms**

56

Grit, Kyle Crescent, left Dundonald Road, **Stop Gritting.** **0.25kms**

57

Travel, **A759** Troon Road, **C32** Old Loans Road, right **U106** Craikslan Road, **Start Gritting.** **0.45kms**

58

Grit, **U106** Craikslan Road to road end at Clevalance Farm, **Stop Gritting.** **1.77kms**

59

Travel, turn at a safe and convenient location, return along **U106** Craikslan Road, right into **C32** Old Loans Road, left **B730** Tarbolton Road Dundonald onto **B730** Drybridge Road, left Kilnford Drive, 4th right Kilnford Crescent, **Start Gritting.** **6.27kms**

60

Grit, Kilnford Crescent, right Kilnford Crescent, left Old Auchans View to junction with Kilnford Drive, **Stop Gritting.** **0.81kms**

61

Travel, right Kilnford Drive, right **B730** Drybridge Road, left **B750** Kilmarnock Road, right Bruce Avenue, **Start Gritting.** **0.56kms**

62

Grit, Bruce Avenue, left Warly Drive, right Bruce Avenue to junction with Warly Drive, **Stop Gritting.** **0.61kms**

63

Travel, Bruce Avenue, right **B750** Kilmarnock Road, right Earl Drive, **Start Gritting.** **0.38kms**

64

Grit, Earl Drive, left Earl Rise, left **B730** Tarbolton Road, **Stop Gritting** **0.68kms**

65

Travel, **B730** to junction with **C96 Muirhill Road** turn left, **Start Gritting.** **1.94kms**

66

Grit, **C96 (Muirhill Road)** to junction with **B751**, **Stop Gritting.** **0.90kms**

67

Travel, **B751** onto **B730** to Tarbolton, left St Andrew's Way, **Start Gritting.** **8.20kms**

68

Grit, St Andrew's Way, circumnavigate roundabout into Red Rose Way, right Bard Drive, right *B730* Croft Street, Stop Gritting. 0.62kms

69

Travel, *B730* Croft Street left Springfield Road, Start Gritting. 0.04kms

70

Grit, Springfield Road to Garden Street, Stop Gritting. 0.32kms

71

Travel, left Garden Street, right Burns Street, left Sandgate Street to Back Street junction Start Gritting 0.35kms

72

Grit, Smithfield Crescent, into Fail Avenue, right Mansefield Road, right Back Street, Stop Gritting. 0.83kms

73

Travel, via Back Street, Princes Street, *B730* Montgomerie Street, *B744*, *B743*, *B744* (through Annbank), *A70* and *B742* to Depot. Route Ends. 14.21kms

Total route length: 94.908kms.

Total length gritted: 28.527kms (30%)

Total length free travel: 66.381kms (70%)

Grangestone Depot - Priority 2 Carriageway Gritting Route 1

1

Travel, leave depot and turn left into **B741** then travel via the **B741** to **C44** at the former Dailly Station and turn left, **Start Gritting.** **7.12kms**

2

Grit, C44 to A77 at Turnberry, Stop Gritting. **9.09kms**

3

Travel, right into **A77**, travel via **A77** northbound to **C28** Blawearie Road south west of Kirkoswald and turn left, **Start Gritting.** **3.96kms**

4

Grit, C28 to A719 north east of Maidens, Stop Gritting. **1.79kms**

5

Travel, right into **A719**, travel via **A719** and **B7023** past Pennyglen, left into **C60** opposite Enoch Lodge, **Start Gritting.** **6.39kms**

6

Grit, C60 to B7024 at Cassillis View and turn right, Stop Gritting. **3.23kms**

7

Travel, right into **B7024** to **B7023** Barns Road Maybole, left into **B7023** then across **A77** High Street into **B7023** St Cuthberts Road and travel via **B7023** Crosshill Road to **C58** opposite Ballochbroe and turn left, **Start Gritting.** **4.02kms**

8

Grit, C58 to B7045 at Chapelton Old Toll and turn left, Stop Gritting. **1.17kms**

9

Travel, left into **B7045**, then left into **C46** at Harkieston Bridge, **Start Gritting.** **0.95kms**

10

Grit, C46 to A77 Cassillis Road Maybole, Stop Gritting. **1.79kms**

11

Travel, left into **A77**, right into **B7023**, through Maybole, right into **C122** Cargill Road, left Gardenrose Path to Fineview Place junction, **Start Gritting.** **1.65kms**

12

Grit, C122 from Fineview Place Maybole, across C60, continue gritting C122 to B7024 east of Knockdon and turn left, Stop Gritting. **7.44kms**

13

Travel, left into **B7024**, right into **C122**, **Start Gritting.** **0.05kms**

14

Grit, C122 to A77 Main Road Minishant and turn right, Stop Gritting. **1.25kms**

15

Travel, right into **A77**, left into **B7045** at Hogg's Corner, left into **B742**, right into **C110** at Barnford Cottage south of Dalrymple, **Start Gritting.** **5.88kms**

16

Grit, C110 to Kirkmichael, left into C11 Patna Road Kirkmichael and continue gritting C11 through East Ayrshire Council boundary to Dalvennan Bridge, Stop Gritting. **11.13kms**

17

Travel, turn at a safe and convenient location and travel back along *C11*, turn left into *C111* west of Stepends Bridge, **Start Gritting.** **2.63kms**

18

Grit, *C111* to *B7045* at Black Bridge and turn right, Stop Gritting. **1.53kms**

19

Travel, right into *B7045*, left into *C31* at Aitkenhead Toll, Start Gritting. **1.40kms**

20

Grit, *C31* to *C88* Dalhowan Street Crosshill, Stop Gritting. **2.83kms**

21

Travel, right into *C88* Dalhowan Street then left into *B7023* Dailly Road and travel via *B7023* and *B741* to *C29* (branch) at Ruglen and turn right, Start Gritting. **3.56kms**

22

Grit, *C29* (branch) to level crossing at Kilkerran, about approximately 10 metres from centre line of railway track, Stop Gritting. **0.56kms**

23

Travel, to about approximately 10 metres after the centre line of railway track, Start Gritting.

0.03kms

24

Grit, *C29* (branch) westbound to *C29* opposite Mill, Stop Gritting. **0.10kms**

25

Travel, turn at a safe and convenient location and return along **C29** (branch) to Ruglen and bear right, **Start Gritting.** **0.57kms**

26

Grit, C29 to B741 and turn right, Stop Gritting. **0.09kms**

27

Travel, B741 southbound towards Dailly, continue into **B7035** at Roan, travel via **B7035** to **B734** at Old Dailly and turn right into **U39** Hawkhill Road Old Dailly **Start Gritting.** **10.02kms**

28

Grit, U39 Hawkhill Road, continue gritting past Hawkhill Farm to **C101** and turn left, **Stop Gritting.** **1.02kms**

29

Travel, via C101 and B741 to Depot. End of route. **4.66kms**

Total route length: 95.881kms.

Total length gritted: 42.995kms (45%)

Total length free travel: 52.886kms (55%)

| | |
|--|--|
| Grangestone Depot - Priority 2 Carriageway Gritting Route 2 | |
| | |
| 1 | |
| Leave Depot and travel, on B741 to Main Street Straiton continue ahead onto C1 Main Street and continue along C1 to Tarlaw Bridge, Start Gritting 27.51kms | |
| | |
| 2 | |
| Grit, C1 from Tarlaw Bridge southwards to the boundary with Dumfries and Galloway, Stop Gritting. 17.83kms | |
| | |
| 3 | |
| Travel, C46W in Dumfries and Galloway to A714 at Bargrennan, turn right into A714, continuing on A714 northbound to C72 in Barrhill and turn left into C72 and continue on C72 to Barrhill Railway Station access road, Start Gritting. 26.80kms | |
| | |
| 4 | |
| Grit, C72 from Barrhill Railway Station access road to turning head 30 metres north of Cattle Grid at Dumfries and Galloway Council Boundary (Drumahastie Burn) Stop Gritting. 6.74kms | |
| | |
| 5 | |
| Travel, turn at a safe and convenient location and return along C72 to A714 at Barrhill, turn left into A714, continuing on A714 northbound to C13 at Pinmore and turn right, Start Gritting. 20.272kms | |
| | |
| 6 | |
| Grit, C13 to junction with B734 at Penkill and turn left, Stop Gritting 9.15kms | |
| | |
| 7 | |
| Travel, left into B734, right into C30, left into B7035 and right into C101 at Lovestone, Start Gritting. 1.26kms | |
| | |

| | |
|---|----------------|
| 8 | |
| Grit, <i>C101</i> to junction with <i>B741</i> and turn left, Stop Gritting. | 1.64kms |
| 9 | |
| Travel, <i>via B741</i> to Depot, End of route. | 3.44kms |
| Total route length: 114.64kms. Total length gritted: 35.36kms (31%) Total length free travel: 79.28kms (69%) | |

Appendix 10 Priority 3 Carriageway Gritting Routes – South Ayrshire Council

Meadowhead Depot - Priority 3 Carriageway Gritting Route 1

1

Leave depot and travel via the **B742, A70, B742** and **C21** to the **U115** (Barbieston Road). **Start Gritting.**
3.94kms

2

Grit, left into U115 and grit over bridge at Coyle Water, Stop Gritting. **0.51kms**

3

Travel, turn at a safe and convenient location and return to the **C21**, continue on **C21** to junction with **U95** (Stabneoch Road), **Start Gritting.** **3.13kms**

4

Grit, U95 to boundary with East Ayrshire, Stop Gritting. **0.33kms**

5

Travel, turn at a safe and convenient location and travel left into **C21**, right into **A713**, left into **B7034**, left into **U35**, travel to boundary with East Ayrshire, **Start Gritting.** **6.87kms**

6

Grit, U35 to U55 (Netherton Road), right into U55 to B742, Stop Gritting. **3.43kms**

7

Travel, turn at a safe and convenient location and return along **U55**, at junction with **U35**, **Start Gritting.**
2.57kms

8

Grit, U55 to U32 (Fardenwilliam Road), left into U32, continue gritting to boundary with East Ayrshire, Stop Gritting. 2.84kms

9

Travel, turn at a safe and convenient location and return along U32 to junction with U55, Start Gritting. 0.17kms

10

Grit, the U32 to the C110, Stop Gritting. 2.57kms

11

Travel, left into the C110, left into the U61 (Roaston Road), Start Gritting. 2.40kms

12

Grit, the U61 to C11, Stop Gritting. 0.69kms

13

Travel, right into the C11, right into the C110 and travel to the U23 (Crawfordston Road), Start Gritting. 3.17kms

14

Grit, left into the U23 and continue gritting to the B7045, Stop Gritting. 3.43kms

15

Travel, left into the B7045, right into the C46, left into the A77, right into the B7023, left into the A719 to the U111 (Culzean Castle Road), Start Gritting. 9.18kms

16

Grit, right into U111 and continue to end of main gate, Stop Gritting. 0.39kms

17

Travel, return along *U111*, left into *A719*, left into *U5* (Balchrison Road), **Start Gritting**.

2.28kms

18

Grit, *U5* to end, Stop Gritting.

2.34kms

19

Travel, return along *U5*, left into *A719*, left into *U24* (Croy Road), **Start Gritting. 5.61kms**

20

Grit, *U24* to end, Stop Gritting.

1.19kms

21

Travel, return along *U24*, left into *A719*, right into the *U63* (Sauchrie Road), **Start Gritting.**
8.89kms

22

Grit, *U63* to the *B7024*, Stop Gritting.

6.17kms

23

Travel, right into *B7024*, left into *U47* (Laigh Grange Road), **Start Gritting.** 0.06kms

24

Grit, *U47* to the *A77*, Stop Gritting.

1.51kms

25

Travel, left into *A77* to the *U14* (Brae Road), **Start Gritting.**

2.76kms

26

Grit, U14 to the B7024, Stop Gritting.

1.23kms

27

Travel, turn at a safe and convenient location and return along the **U14**, left into the **A77**, right into the **C39**, right into the **C74**, left into the **B742**, right into the **U100** (Martnaham Road), **Start Gritting.**

11.78kms

28

Grit, U100 to the boundary with East Ayrshire, Stop Gritting.

2.25kms

29

Travel, return along **U100**, right into **U93** (Sandhill Road), **Start Gritting.**

1.53kms

30

Grit, U93 to boundary with East Ayrshire, Stop Gritting.

3.18kms

31

Travel, return along **U93**, right into **C21**, left into **B742**, right into **C74**, right into the **U82** (Laighpark Road), **Start Gritting.**

4.40kms

32

Grit, U82 to the A70, Stop Gritting.

2.07kms

33

Travel, right into the **A70**, left into the **B742**, return to depot.

Route ends.

2.44kms

Total route length: 105.310kms.

Total length gritted: 34.145kms (32%)

Total length free travel: 71.165kms (68%)

Meadowhead Depot - Priority 3 Carriageway Gritting Route 2

1

Travel, leave depot right into **B742**, right **A70**, right **U90** (Potterhill Road), **Start Gritting**.

3.68kms

2

Grit, U90 to the B744, Stop Gritting.

1.93kms

3

Travel, right into **B744**, right into **U91** (Pierhill Road), **Start Gritting**.

3.76kms

4

Grit, U91 to the B730, Stop Gritting.

2.14kms

5

Travel, left into **B730**, right into **B743**, travel across boundary with East Ayrshire. Left into **U92** (Redcraig Road) and at boundary, **Start Gritting**.

7.85kms

6

Grit, U92 to the C35, Stop Gritting.

3.32kms

7

Travel, left into the **C35**, right into the **B744**, left into the **U83** (Longhouse Road), **Start Gritting**.

1.54kms

8

Grit, U83 to the A719, Stop Gritting.

2.52kms

9

Travel, turn at a safe and convenient location, return along the U83 to junction with U84 (Garroch Road), Start Gritting.

0.09kms

10

Grit, left into U84 to the B744, Stop Gritting.

2.78kms

11

Travel, right into the B744, right into the U83, right into the A719, left into the C53, left into the U20 (Sidehead Terrace, Fiveways), Start Gritting.

3.54kms

12

Grit, U20 to end, Stop Gritting.

0.70kms

13

Travel, turn and return along the U20, right into the C53, right into A719, right into the U70 (Broadyards Road), Start Gritting.

3.40kms

14

Grit, U70 to the C119, Stop Gritting.

1.41kms

15

Travel, right into the C119, left into the U74 (East Hillhouse Road), Start Gritting.

0.24kms

16

Grit, U74 to the boundary with East Ayrshire, Stop Gritting.

0.71kms

17

Travel, return along **U74**, right into the **C119**, left into the **U70**, right into the **A719**, left into the **U86** (Millburn Road), **Start Gritting.**

3.06kms

18

Grit, U86 to the B744, Stop Gritting.

2.87kms

19

Travel, turn at a safe and convenient location and return along the U86, left into the U87 (Mossie Road), Start Gritting.

1.08kms

20

Grit, U87 to the B730, Stop Gritting.

2.25kms

21

Travel, right into the B730, right into A719, left into the B730, left into the U88 (Midton Road), Start Gritting.

1.78kms

22

Grit, U88 and U97 (Barnweil Road) taking care to complete the circuit at Barnweil, continue to junction with C138, Stop Gritting.

2.60kms

23

Travel, left into the C138 left into the U89 (Pisgah Road), Start Gritting.

0.09kms

24

Grit, U89, take left at Pisgah and continue gritting to junction of the A719, Stop Gritting.

2.98kms

25

Travel, turn at a safe and convenient location and return along road to Pisgah, Start Gritting.

1.44kms

26

Grit, U89 to junction with U96 (Wardneuk Road), turn right into the U96 and continue gritting to the C138, Stop Gritting.

1.76kms

27

Travel, return along U96 to junction with U76 (Foulton Road), Start Gritting.

0.81kms

28

Grit, U76 to the B739, Stop Gritting.

1.29kms

29

Travel, left into the B739, right into the A719, right into the A77 at Sandyford Toll, left into the U117 (Shields Road), Start Gritting.

3.14kms

30

Grit, U117 to Shawhill Farm Road end, Stop Gritting.

0.59kms

31

Travel, turn at a safe and convenient location and return along the U117, left into the A77 (northbound), right into the A77 (northbound) at Dutch House Roundabout then left into left into the slip road to the B7038 (Kilmarnock), take left into the U112 (Spitalhill Road), Start Gritting.

11.04kms

32

Grit, U112 to Spittalhill Farm, Stop Gritting.

0.92kms

33

Travel, turn at a safe and convenient location and return along **U112** and left into **B7038**, right into the **U94** (Stafflar Road {at East Ayrshire}) at boundary, **Start Gritting.** 0.98kms

34

Grit, U94 to the B730 at Bogend Toll roundabout, Stop Gritting.

2.54kms

35

Travel, onto B730 at Bogend Toll roundabout, take 2nd exit from roundabout onto B730 left into Whitelees Road, Start Gritting.

0.18kms

36

Grit, Whitelees Road to end of road at turning head on southside of A77, Stop Gritting. 0.63kms

37

Travel, turn at a safe and convenient location and return along Whitelees Road, left into the **B730, across A77 overbridge, left into B730 at roundabout then right into the B751, right into the U73 (Ditton Road), Start Gritting.**

3.25kms

38

Grit, U73 to end, Stop Gritting.

0.26kms

39

Travel, turn at a safe and convenient location and return along **U73**, continue into **B751**, left into the **U108** (Rowanhill Road), **Start Gritting.**

0.81kms

40

Grit, U108, continue gritting across the **B730** into the **U72**, left into the **U99** (Dundonald /Symington Road) and continue gritting to the junction with the **U98** (Corraith Road), **Stop Gritting**.

4.10kms

41

Travel, turn at a safe and convenient location and return along the **U99**, at the junction with **U72**, **Start Gritting**.

1.22kms

42

Grit, U99 to the **C32**, **Stop Gritting**.

0.91kms

43

Travel, right into **C32**, left into **B730**, right into **A759**, left into **C128**, right into the **U109** (Cockhill Road), **Start Gritting**.

3.21kms

44

Grit, U109 to 'Y' junction, **Stop Gritting**.

0.82kms

45

Travel, turn at a safe and convenient location and return along **U109**, left into **C128**, right into **A759**, left at roundabout into **A759**, continue along **A759** towards Loans, left into **U78** (Hillhouse Road), **Start Gritting**.

6.58kms

46

Grit, U78 to Dovecot Hill, **Stop Gritting**.

0.81kms

47

Travel, turn at a safe and convenient location and return along the **U78**, left into **A759**, left into **U105** (Collenan Road), **Start Gritting**.

1.24kms

48

Grit, *U105* to the 'Moreland/Water Works Cottages', Stop Gritting. 0.61kms

49

Travel, turn at a safe and convenient location and return along *U105*, left into *A759*, left into *C32*, right into *U110* (Old Craikslan), Start Gritting. 1.90kms

50

Grit, *U110* to end, Stop Gritting. 0.06kms

51

Travel, turn at a safe and convenient location and return along *U110*, left into *C32*, left into *B746*, right into *U75* (Fullarton), Start Gritting. 1.35kms

52

Grit, *U75*, right into *U114* (Isle of Pin Road) continue gritting to *C52* (Monktonhill Road), Stop Gritting. 1.58kms

53

Travel, left into Monktonhill Road, left into *U75*, Start Gritting. 1.04kms

54

Grit, *U75* to the junction with *U75* (at Fairlees), Stop Gritting. 0.81kms

55

Travel, right along *U75*, left into *B746*, right into *U98*, right at roundabout onto slip road to *A78*, continue along *A78* to Monktonhill roundabout, exit right into the *A79*. Travel to second roundabout (Prestwick Airport entrance) and circumnavigate, take left into the *U50* (St Andrews Caravan Park Road), Start Gritting. 6.64kms

56

Grit, U50 to caravan park entrance, Stop Gritting.

0.56kms

57

Travel, turn at a safe and convenient location and return along U50, left into A79 to Monktonhill roundabout and exit into U81 (Kerrix Road), Start Gritting.

2.32kms

58

Grit, U81 to Main Street, Symington, Stop Gritting.

4.61kms

59

Travel, right into Main Street, left into Symington Road South, left into A77 northbound, continue on A77 then left into B730 at Bogend, then take 1st exit at roundabout into B730 travel across A77 overbridge then take 1st exit at roundabout into B730 then left into A77 (southbound), left into the U79 (Helenton Mains Road), Start Gritting.

11.83kms

60

Grit, U79 to end, Stop Gritting.

1.38kms

61

Travel, turn at a safe and convenient location and return along U79, left into A77 (southbound), continue on A77 through Dutch House and Whitletts roundabouts. Continue on A77, left U85 (Mainholm Road), Start Gritting.

4.71kms

62

Grit, U85 to end, Stop Gritting.

2.60kms

63

Travel, turn at a safe and convenient location and return along U85, left into A77, left into A70 and return to depot. Route Ends.

10.71kms

Total route length: 158.737kms.

Total length gritted: 52.838kms (33%)

Total length free travel: 105.899kms (67%)

| Grangestone Depot - Priority 3 Carriageway Gritting Route 1 | | |
|---|---|----------|
| | | |
| 1 | Travel, leave depot and travel left into B741 to the U25 (Delamford), right into the U25 , Start Gritting. | 10.47kms |
| | | |
| 2 | Grit, U25 to the junction with the U66 (Stinchar Road), Stop Gritting. | 8.29kms |
| | | |
| 3 | Travel, right into U66 , left into B734 , right into U11 , Start Gritting. | 6.09kms |
| | | |
| 4 | Grit, U11 to before bridge over the River Stinchar. DO NOT CROSS THE BRIDGE, Stop Gritting. | 0.50kms |
| | | |
| 5 | Travel, return along U11 , left into the B734 , right into U66 , continue to the U57 (Nick of the Balloch Road), Start Gritting. | 10.74kms |
| | | |
| 6 | Grit, right into U57 and continue gritting to the C1 , Stop Gritting. | 6.21kms |
| | | |
| 7 | Travel, left into C1 and continue to U8 (Ballochbeatties Road), right into the U8 , Start Gritting. | 7.58kms |
| | | |
| 8 | Grit, U8 to end, Stop Gritting. | 2.53kms |
| | | |
| 9 | Travel, turn at a safe and convenient location and return along the U8 , right into the C1 , right into the U42 (Knockdon Road), Start Gritting. | 8.77kms |
| | | |
| 10 | Grit, U42 to Knockdon Bridge, Stop Gritting. | 2.54kms |
| | | |
| 11 | Travel, turn at a safe and convenient location and return along the U42 , right into C1 , left into the U4 (Balbeg Road), Start Gritting. | 5.19kms |
| | | |
| 12 | Grit, U4 to Palmullan Bridge, Stop Gritting. | 1.40kms |
| | | |
| 13 | | |

| | |
|--|-----------------|
| Travel, turn at a safe and convenient location and return along <i>U4</i>, left into <i>C1</i>, right into <i>B741</i>, left into <i>U104</i> (Holehouse Road), Start Gritting. | 4.49kms |
| 14 Grit, <i>U104</i> to Glenhead Farm, Stop Gritting. | 0.55kms |
| 15 Travel, turn at a safe and convenient location and return along <i>U104</i>, right into <i>B741</i>, left into <i>U31</i> (Dyke Road), Start Gritting. | 1.72kms |
| 16 Grit, <i>U31</i>, right into <i>U68</i>, at junction with <i>B741</i>, Stop Gritting. | 3.21kms |
| 17 Travel, turn at a safe and convenient location and return along <i>U68</i>, right into <i>U43</i> (Knockgardner Road), Start Gritting. | 1.31kms |
| 18 Grit, <i>U43</i>, left into <i>U27</i> (Deil's Elbow Road), continue gritting to junction with <i>U66</i>, Stop Gritting. | 13.38kms |
| 19 Travel, turn at a safe and convenient location and return along <i>U27</i> to junction with <i>U12</i> (Blair Road), Start Gritting. | 9.48kms |
| 20 Grit, <i>U12</i> to Blair Farm, Stop Gritting. | 1.05kms |
| 21 Travel, turn at a safe and convenient location and return along <i>U12</i>, left into <i>U27</i>, to the junction with <i>U43</i>, Start Gritting. | 2.19kms |
| 22 Grit, left into the <i>U27</i> to the junction with <i>B741</i> at Cloyntie Toll, Stop Gritting. | 2.14kms |
| 23 Travel, turn at a safe and convenient location and return along <i>U27</i> to <i>U45</i> (Ladyburn Road), Start Gritting. | 1.26kms |
| 24 Grit, right into the <i>U45</i>, right into the <i>U16</i> (Burnton Road) and continue gritting to the junction with <i>B741</i>, Stop Gritting. | 3.26kms |
| 25 Travel, turn at a safe and convenient location and return along the <i>U16</i> to junction with the <i>U45</i>, Start Gritting. | 1.49kms |
| 26 Grit, right into <i>U45</i> to the junction with the <i>B741</i>, Stop Gritting. | 0.89kms |
| 27 | |

| | | |
|--|--|-----------------|
| Travel , left into <i>B741</i> , left into the <i>U60</i> (Poundland Road), Start Gritting . | | 2.59kms |
| | | |
| 28 Grit, <i>U60</i> to Poundland Farm, Stop Gritting. | | 0.80kms |
| | | |
| 29 Travel, turn at a safe and convenient location and return along the <i>U60</i> , left into the <i>B741</i> and return to Depot. Route ends. | | 11.81kms |
| Total route length: 131.908kms. Total length gritted: 46.732kms (35%) Total length free travel: 85.176kms (65%) | | |

Grangestone Depot - Priority 3 Carriageway Gritting Route 2

1

Travel, leave depot and continue, via **B741** and **A77** to the junction of the **U64** (Shalloch Mill Road), **Start Gritting**.
6.82kms

2

Grit, the **U64** to the junction with **A714**, **Stop Gritting**.
1.03kms

3

Travel, right into **A714** to **U48** (Lendal Road), **Start Gritting**.
5.33kms

4

Grit, **U48** to junction with the **A77**, **Stop Gritting**.
8.87kms

5

Travel, left into **A77**, left into **U17** (Carlton Road), **Start Gritting**.
0.10kms

6

Grit, **U17** to the junction with the **B734**, **Stop Gritting**.
4.85kms

7

Travel, left into **B734**, right into **A714**, left into the **U52** (Muck Road), **Start Gritting**.
4.87kms

8

Grit, **U52** to junction with access road to Muck Farm, **Stop Gritting**.
5.67kms

9

Travel, turn at a safe and convenient location and return along **U52**, left into the **A714**, right into the **U103** (Drumskeoch Road), **Start Gritting**.
7.49kms

10

Grit, **U103** to end, **Stop Gritting**.
2.11kms

11

Travel, turn at a safe and convenient location and return along **U103**, right into the **A714**, continue through Barrhill, continue on **A714** to the junction with **U102** (Black Clauchrie Road), **Start Gritting**.
8.11kms

12

Grit, **U102** to end, **Stop Gritting**.
4.43kms

13

Travel, turn at a safe and convenient location and return along **U102**, right into the **A714**, left into the **B7027**, left into the **U28** (Dornal Road), **Start Gritting**.
13.78kms

14

Grit, U28 to end, Stop Gritting.

4.20kms

15

Travel, **turn at a safe and convenient location** and return along *U28*, right into *B7027*, left into *A714*, continue through Pinwherry, left into the *B734*, left into *C45* in Colmonell, left into *U26* (Dalreoch Road), **Start Gritting.**

25.61kms

16

Grit, U26 to Dalreoch Mains Farm, Stop Gritting.

2.01kms

17

Travel, **turn at a safe and convenient location** and return along the *U26*, left into *U9* (Bardrochat Road), **Start Gritting.**

1.83kms

18

Grit, U9 at cattle grid near access leading to East Reuchal Farm, Stop Gritting.

2.15kms

19

Travel, **turn at a safe and convenient location** and return along *U9*, left into *U26*, left into *C45*, right into *U59* (Polcardoch Road), **Start Gritting.**

6.32kms

20

Grit, U59 to Kirkholm Farm, Stop Gritting.

0.41kms

21

Travel, **turn at a safe and convenient location** and return along *U59* right into *C45*, left into *U51* (Mains of Tig Road), **Start Gritting.**

0.74kms

22

Grit, U51 to Mains of Tig Farm, Stop Gritting.

3.31kms

23

Travel, **turn at a safe and convenient location** and return along *U51*, left into *C45*, left into *U22* (Crailoch Road), **Start Gritting.**

4.47kms

24

Grit, U22 to Crailoch Farm, Stop Gritting.

1.39kms

25

Travel, **turn at a safe and convenient location** and return along *U22*, right into *U6* (Balkissock Road), **Start Gritting.**

1.14kms

26

Grit, U6 to Balkissock, Stop Gritting.

1.67kms

27

Travel, **turn at a safe and convenient location** and return along *U6*, right into *U22*, left into *C45*, left into *A77*,

left into *U1* (Auchairnie Road), **Start Gritting.**

5.93kms

28

Grit, *U1* to junction with Kilwhannel farm access road, **Stop Gritting.**

2.10kms

29

Travel, turn at a safe and convenient location and return along *U1*, left into *A77*, right into *U36* (Glendrishraig Road), **Start Gritting.**

6.33kms

30

Grit, *U36* to High Ballochdowan, **Stop Gritting.**

2.20kms

31

Travel, turn at a safe and convenient location and return along the *U36*, to junction with *U10* (Big Park Road), **Start Gritting.**

1.67kms

32

Grit, *U10*, right into *U7* (Ballantrae Mill Road), to junction with *A77*, **Stop Gritting.**

4.78kms

33

Travel, turn at a safe and convenient location and return along *U7* to junction with the *U10*, **Start Gritting.**

0.29kms

34

Grit, right into *U10*, left into *U29* (Downan Road), continue gritting at entrance to Dowanhill, **Stop Gritting.**

2.19kms

35

Travel, turn at a safe and convenient location and return along *U29*, to junction with *U10*, **Start Gritting.**

1.86kms

36

Grit, left into *U10* to junction with *A77*, **Stop Gritting.**

0.47kms

37

Travel, left into *A77*, left into *U113* (Bennane Road), **Start Gritting.**

4.03kms

38

Grit, *U113* to Bennane House, **Stop Gritting.**

0.29kms

39

Travel, turn at a safe and convenient location and return along *U113*, left into *A77* and return to Depot via *A77* and *B741*. Route ends.

20.88kms

Total route length: 175.768kms.

Total length gritted: 51.175kms (30%)

Total length free travel: 124.593kms (70%)

Grangestone Depot - Priority 3 Carriageway Gritting Route 3

1

Travel, leave depot and turn left into *B741* and left into *U46* (Ladywell Road), **Start Gritting.**
1.19kms

2

Grit, *U46* to Works Access on right side of the road, Stop Gritting. **0.28kms**

3

Travel, turn at a safe and convenient location and return along *U46*, left into *B741*, right onto *A77*, right into *U30* (Dunnymuck Road), **Start Gritting.** **5.73kms**

4

Grit, the *U30* to Dunnymuck Farm, Stop Gritting. **0.13kms**

5

Travel, turn at a safe and convenient location and return along *U30*, right into the *A77*, right into the *U49* (Littleton Glen Road), **Start Gritting.** **1.17kms**

6

Grit, the *U49*, right into the *U54* (McGownston Road), continue gritting to the *C44*, Stop Gritting.
4.17kms

7

Travel, left into the *C44*, right into the *U19* (Chapelton Road), **Start Gritting.** **0.65kms**

8

**Grit, *U19*, left into the *U44* (Knoxhill Road), continue gritting to the *A77*, Stop Gritting.
4.16kms**

9

**Travel, turn at a safe and convenient location and return along the *U44*, right into the *U40* (High Park Road),
Start Gritting. 0.10kms**

10

Grit, *U40* across the *C44* to the junction with the *U49*, turn left, Stop Gritting. 3.90kms

11

Travel, along the *U54*, across *C44*, into the *U53* (Mullocks Road), Start Gritting.

2.98kms

12

Grit, *U53* to junction with the *U62* (Roughneuk Road), right, Stop Gritting. 3.96kms

13

**Travel, *U62* to the junction with the *C29*. Turn at a safe and convenient location return into *U62*, Start
Gritting. 1.88kms**

14

Grit, *U62* to the junction with *U44*, Stop Gritting. 4.52kms

15

Travel, right into *U44*, right into the *U38* (Hallowshean Road), Start Gritting. 0.27kms

16

Grit, U38 to junction with the A77, right, Stop Gritting.

1.99kms

17

Travel, A77, right into the U69 (Wellholm Road), Start Gritting.

2.80kms

18

Grit, U69 to the junction with U38, right into U38, Stop Gritting.

2.81kms

19

Travel, via the U38, right into A77, right into the C29 at Maybole, right into the U2 (Auchencross Road), Start Gritting.

7.01kms

20

Grit, U2, right into U15 (Burncrooks Road), continue gritting U15 to end, Stop Gritting.

4.46kms

21

Travel, turn at a safe and convenient location and return along the U15 to junction with the U2, continue on U15, Start Grit

2.40kms

22

Grit, U15 to the junction with the C29, right, Stop Gritting.

0.39kms

23

Travel, turn right into the C29, left into the U3 (Bairdsmill Road), Start Gritting.

0.50kms

24

Grit, U3 to the junction with the B7023, right, Stop Gritting.

1.82kms

25

Travel, via the **B7023**, **C88** and **B741** then left into the **U34** (at Longhill on Garphar Road), **Start Gritting**.
3.48kms

26

Grit, U34 and continue gritting to junction with the **U67** (Tranew Road), **Stop Gritting**.
1.29kms

27

Travel, right into the **U67** to the junction with the **B741**. **Turn at a safe and convenient location** and return along the **U67**, **Start Gritting**.
0.61kms

28

Grit, U67 to the junction with the **C31**, **Stop Gritting**.
3.48kms

29

Travel, left into the **C31**, left into the **U58** (Parkfairn Road), **Start Gritting**.
1.15kms

30

Grit, U58 to the junction with the **B741**, right, **Stop Gritting**.
1.60kms

31

Travel, B741, right into the **C44**, left into the **U21** (Craighead Road at Drummuck), **Start Gritting**.
13.85kms

32

Grit, U21 to the junction with the **B741**, **Stop Gritting**.
3.31kms

33

Travel, right into the **B741** and return to Depot. Route ends.
4.30kms

Total route length: 92.794kms.
Total length gritted: 42.732kms (46%)
Total length free travel: 50.062kms (54%)



A partnership between East Ayrshire Council and South Ayrshire Council

