



*Ayrshire Roads Alliance*

# Winter Service Operational Plan and Policy

*for South Ayrshire Council*



*south*  
**AYRSHIRE**  
COUNCIL

**AYRSHIRE ROADS ALLIANCE  
WINTER SERVICE 2014/15  
FOR  
SOUTH AYRSHIRE COUNCIL  
OPERATIONAL PLAN & POLICY**

<b>CONTENTS</b>	<b>PAGE NUMBER</b>
1.0 Policies, Procedure and Objectives	4-5
1.1 Statutory Duty and Policies	4
1.2 Procedures	5
1.3 Objectives	5
2.0 Management Arrangements and Responsibilities	5-6
3.0 Operational Arrangement and Treatment Priorities	6-8
3.1 Arrangements	6
3.2 Treatment Priorities	7-8
4.0 Weather Forecasting and Information	8-12
4.1 Forecasting	8
4.2 Treatments	9
4.3 Guidelines	9-10
4.4 Treatment for Snow	10
4.5 Routes	10-11
4.6 Salt Bins	11-12
5.0 Labour Resources	12
6.0 Vehicle and Plant Resources	12-13
6.1 Specialist Plant	12
6.2 Plant Maintenance	12
6.3 Non Specialist Plant	13
6.4 Plant from Other Authority Resources, Farmers & Contractors	13
7.0 Salt and Fuel	13
8.0 Salt Testing & Application	14-15
9.0 Decision Making	16-17
10.0 Training	17
11.0 Health and Safety	18
12.0 Operational Communications	18
13.0 External Communications	18-19
14.0 Arrangements at Boundaries with other Authorities	19-21
14.1 Trunk Roads	19
14.2 Dumfries and Galloway Council	19
14.3 East Ayrshire Council	20
14.4 North Ayrshire Council	21
15.0 Information recording and analysis	21
16.0 Review	21
17.0 Arrangements for performance monitoring, audit, and updating	21

<b>Document</b>	<b>Winter Service 2014/15</b>	<b>Revision</b>	<b>2</b>
<b>ARA Operational Plan &amp; Policy</b>	<b>Page 2 of 71</b>	<b>Date</b>	<b>21/01/2015</b>

## APPENDICES

Appendix 1	Primary Carriageway Treatment Routes
Appendix 2	Secondary Carriageway Treatment Routes
Appendix 3	Tertiary Carriageway Treatment Routes
Appendix 4	Footway / Footpath Treatment Routes
Appendix 5	Climatic Domain Areas, Sensor Sites and Depot Locations
Appendix 6	Salt Bins
Appendix 7	Roads Service Personnel
Appendix 8	Specialist Winter Service Plant
Appendix 9	Non-Specialist Plant
Appendix 10	Contractor Resources
Appendix 11	Process Flow Chart

## Revisions

<u>Revision Number</u>	<u>Date</u>	<u>Comments</u>
1	12/11/2014	Amendments to Appendix 1 and Appendix 8.
2	21/01/2015	Amendment to Appendix 2

## 1.0 Policies, Procedures and Objectives

### 1.1 Statutory Duty and Policies

1.1.1 The Winter Service forms an integral part of the roads maintenance function and by virtue of Section 34 of the Roads (Scotland) Act, 1984, South Ayrshire Council has a statutory duty to **“take such steps as it considers reasonable to prevent snow and ice endangering the safe passage of pedestrians and vehicles over public roads”**.

1.1.2 The Winter Service for roads within South Ayrshire is carried out in accordance with the Operational Plan and Policy. The Operational Plan is produced on the basis of treating an average winter's conditions, but can be adapted or extended to react to severe weather conditions. The Policy sets out the objectives to be accorded to roads and footways, with the exception of the trunk roads which are the responsibility of Transport Scotland.

1.1.3 The Policy adopted by Ayrshire Roads Alliance takes cognisance of the principles incorporated in:-

- **Well Maintained Highways – Code of Practice for Highway Maintenance Management : July 2005**
- **Well Maintained Highways – Code of Practice for Highway Maintenance Management Complementary Guidance: August 2011**
- **Institute of Civil Engineers (ICE) Design and Practice Guide Highway Winter Maintenance : 2000**

1.1.4 The Local Government in Scotland Act 2003 states: -

- It is the duty of a local authority to make arrangements which secure best value.
- Best value is continuous improvement in the performance of the authority's functions.
- In securing best value, the local authority shall maintain an appropriate balance among:-
  - i) the quality of its performance of its functions
  - ii) the cost to the authority of that performance; and
  - iii) the cost to persons of any service provided by it for them on a wholly or partly rechargeable basis
- In maintaining that balance, the local authority shall have regard to:-
  - i) efficiency
  - ii) effectiveness
  - iii) economy; and
  - iv) the need to meet the equal opportunity requirements
- With resources available to:-
  - i) Ensure operations are undertaken safely having regard to the requirements of the Health and Safety at Work Act 1974, UK Domestic Drivers Hours Rules and European Working Time Directive.
- The local authority shall discharge its duties under this section in a way which contributes to the achievement of sustainable development.
- In measuring the improvement of the performance of a local authority's functions for the purposes of this section, regard shall be had to the extent to which the outcomes of that performance have improved.

1.1.5 The Local Government in Scotland Act 2003 also states that: -

- 'It is the duty of a local authority to make arrangements for the reporting to the public of the outcome of the performance of its functions'.

<b>Document</b>	<b>Winter Service 2014/15</b>	<b>Revision</b>	<b>2</b>
<b>ARA Operational Plan &amp; Policy</b>	<b>Page 4 of 71</b>	<b>Date</b>	<b>21/01/2015</b>

## **1.2 Procedures**

- 1.2.1 Procedures have been developed which comply with the Roads (Scotland) Act 1984 and can be achieved within available resources and take account of Best Value.
- 1.2.2 The Winter Service period for shall be from 6 October 2014 to 13 April 2015 for carriageways and from 4 November 2013 to 31 March 2014 for footways and footpaths.
- 1.2.3 A report will be put to Council for approval and publication in June 2015. This report will be for the winter activities carried out from 6 October 2014 to 13 April 2015.
- 1.2.4 The report will include details of: -
- A summary of the winter weather conditions,
  - A description of the activities carried out, giving details of number of times routes were treated, salt used, etc.
  - A summary of the response from the public, including the results of any consultation exercises,
  - Winter related accidents
  - A summary of the resources utilised and the cost of the service.
  - Outcome

## **1.3 Objectives**

- 1.3.1 Ayrshire Roads Alliance's objectives in relation to the Winter Service are;
- The reduction, as far as reasonably practicable, of the effects of adverse weather whilst maintaining the availability and reliability of the roads network.
  - To provide travelling conditions as safe as reasonably practicable having regard to financial constraints, resources available and prevailing weather conditions.
  - To minimise delays, accidents and damage resulting from ice and snow.
  - To undertake the winter maintenance service effectively and efficiently.

In order to achieve this objective it is recognised that a priority treatment programme is required.

The Winter Service essentially comprises the following three main components:-

- Pre-treatment - precautionary salting before the formation of ice or frost.
- Post - treatment - salting following the formation of ice.
- Clearance of snow.

## **2.0 Management Arrangements & Responsibilities**

- 2.1 The Head of Roads – Ayrshire Roads Alliance or nominated person will be responsible for determining winter maintenance policies and for providing all resources required to carry out the Winter Service – The Operational Plan and Policy.
- 2.2 Prior to the commencement of winter operations each year, the Head of Roads – Ayrshire Roads Alliance will seek Council approval of the Plan and Policy and agreement to publish extracts of them.
- 2.3 The Head of Roads – Ayrshire Roads Alliance or an appointed person shall be responsible for the provision of a winter service.
- 2.4 The Ayrshire Roads Alliance Operations Manager or an appointed person shall be responsible for the following:-

<b>Document</b>	<b>Winter Service 2014/15</b>	<b>Revision</b>	<b>2</b>
<b>ARA Operational Plan &amp; Policy</b>	<b>Page 5 of 71</b>	<b>Date</b>	<b>21/01/2015</b>

- Nominating and identifying all key personnel
- To have in place a Winter Service Operational Plan and Policy
- Ensuring all staff are suitably trained
- Ensuring all records and forms are stored and suitably identifiable in a suitable location and are retained for a minimum period of five years
- Collating all relevant details to allow for budget transfer and reconciliation
- Co-operating with adjacent authorities and other partners to ensure as far as reasonably possible a synchronised form of response

2.5 Winter Service Managers shall be responsible for the following:-

- Deciding and recording what winter service activity is required
- Forwarding the treatment decision to those nominated
- Completing a Daily Gritting Report for each day of the Winter Service season
- Recording details of updates or any amendment in Vaisala Manager.
- Telephoning the duty Winter Service Supervisor to inform them of any amendment required to earlier treatment decision

2.6 Winter Service Supervisors or an appointed person shall be responsible for the following:-

- Co-ordinating the action by gritting crews
- Recording salt usage including reconciliation of salt stocks in Vaisala Manager: Depot Daily Return if any winter service activity has taken place
- Forwarding all drivers logs, on a weekly basis, to the Winter Service Duty Manager
- Completing a Depot Daily Return and forwarding this to the Winter Service Manager or nominee, before 10 00 hours on the next working day.

2.7 Gritting Crews shall be responsible for:-

- Completing a drivers log for each gritting route or activity, signing off all actions and submitting this to the Winter Service Supervisor

### **3.0 Operational Arrangements & Treatment Priorities**

#### **3.1 Arrangements**

- 3.1.1 The Winter Service will be carried out by Ayrshire Roads Alliance on behalf of South Ayrshire Council. The Winter Service is funded from the Ayrshire Roads Alliance Revenue Budget.
- 3.1.2 Throughout the Winter Service period there are trained drivers available for each operational vehicle and other items of plant. All drivers have knowledge of every salting route operating from their Operational Depot and are capable of undertaking all routes as required.
- 3.1.3 Outside normal working hours throughout the Winter Period, there is at least one driver for each route available to attend the loading point, load the vehicle and commence the route within one hour.
- 3.1.4 A trained and experienced supervisor with a means of communication to all winter service vehicles is available at each of the 2 depots at all times during Winter Service operations to ensure that operations are carried out in accordance with this Operational Plan.
- 3.1.5 A means of suitable communication is available for each Winter Service vehicle.

<b>Document</b>	<b>Winter Service 2014/15</b>	<b>Revision</b>	<b>2</b>
<b>ARA Operational Plan &amp; Policy</b>	<b>Page 6 of 71</b>	<b>Date</b>	<b>21/01/2015</b>

### 3.2 Treatment Priorities - Carriageways

3.2.1 At the start of each winter the Head of Roads – Ayrshire Roads Alliance will produce carriageway salting routes based generally on the following priorities.

3.2.2 **Priority 1: Primary Routes** which have been identified as requiring precautionary treatment in the event of a forecast of frost ice or snow which may create hazardous driving conditions.

- Council strategic routes i.e., the A70, A713, A714, A719, A759, A79, and all B Class Roads. This does **NOT** include the A77 and A78 trunk roads, which are the responsibility of Transport Scotland.
- Access routes to hospitals with accident & emergency units, ambulance depots and fire stations.
- One access route to the main gate of Primary and Secondary schools during term time when schools are open.
- Bus routes where considered appropriate by the Head of Roads – Ayrshire Roads Alliance. Bus routes included are, after consultation with Strathclyde Partnership for Transport (SPT), primarily the major bus routes. The diversity of routes since deregulation and the frequent changes precludes the inclusion of all bus routes
- Major concentrations of employment.

3.2.3 **Priority 2: Secondary Routes** which have been identified as requiring treatment in the event that the weather conditions persist into daylight hours.

- All C Class Roads not included in Priority 1
- Local concentrations of employment
- Access to isolated villages
- Areas of high density urban population not included in Priority 1

3.2.4 **Priority 3: Tertiary Routes** are other council roads which may not normally be included within priorities 1 and 2 but which may be adversely affected by prolonged inclement weather. These will be treated as resources allow.

3.2.5 The routes may be amended by the Head of Roads – Ayrshire Roads Alliance during the Winter with an updated copy being made available for inspection by the public at the office of Ayrshire Roads Alliance, Burns House, 16 Burns Statue Square, Ayr KA7 1UT.

3.2.6 Where a complaint / request for treatment is received for a location which has not been treated as part of the planned operations, the Head of Roads – Ayrshire Roads Alliance will determine what action can be taken. The Head of Roads – Ayrshire Roads Alliance will take account of the specific circumstances, the safety implications and the available resources in his determination. Resources may not permit the treatment of all requests.

3.2.7 Fixed salting routes are pre-planned to ensure that during "routine" winter conditions, **Priority 1: Primary Routes** will be treated. However under more extreme conditions (heavy snow falls or freeze/rain/freeze cycles) gritters may have to be concentrated on the higher priority roads until attention can safely be transferred to other roads.

3.2.8 Fixed salting routes included in **Priority 2: Secondary Routes** as described above, will normally be treated only during daytime hours.

3.2.9 Fixed salting routes included in **Priority 3: Tertiary Routes** as described above, will normally be treated only during daytime hours.

Document	Winter Service 2014/15	Revision	2
ARA Operational Plan & Policy	Page 7 of 71	Date	21/01/2015

- 3.2.10 When a decision is taken to commence reactionary treatment then the maximum time between the decision to commence any treatment activity and the actual start of work shall be one hour.
- 3.2.11 Within any section of a Primary Route identified for treatment, the maximum time permitted for the application of salt as a precautionary treatment will normally be 3 hours (i.e. time taken from beginning of spreading to completion of spreading).

## 4.0 Weather Forecasting and Information

### 4.1 Forecasting

- 4.1.1 Ayrshire Roads Alliance has appointed MeteoGroup UK as their weather forecast provider.
- 4.1.2 For the duration of the winter service period MeteoGroup UK provides a weather forecasting service, including ice prediction, and to monitor road and weather conditions. MeteoGroup UK receive, monitor and interpret on a continuous basis climatic, ice prediction and weather radar information and forward detailed weather forecasts to Ayrshire Roads Alliance on a daily basis over the period 1<sup>st</sup> October to 15<sup>th</sup> May.
- 4.1.3 During the winter service period, MeteoGroup UK post a 24 hour forecast on a dedicated website around 12 00 hours each day. This forecast is also sent to Ayrshire Roads Alliance by email.
- 4.1.4 If the weather changes outwith these times MeteoGroup UK will contact the Winter Services Manager with a revised forecast.
- 4.1.5 Thermal mapping has been used to determine that there are effectively 4 differing climatic domain areas within the South Ayrshire Council area.

There will be a forecast issued for each of these domains, i.e.: -

- Northwest Area 1
- Northeast Area 2
- Southwest Area 3
- Southeast Area 4

These domains are shown in the plan in **Appendix 4**.

- 4.1.6 Ayrshire Roads Alliance has a road weather sensor site on the A714 Girvan - Newton Stewart Road at Corwar Mains. Transport Scotland has agreed that data from sensor sites located on the A77 trunk road at Dutchhouse and Crossraguel will be made available to Ayrshire Roads Alliance. The forecast will take account of all relevant road weather data available from these sites and other nearby sites in neighbouring authority areas.
- 4.1.7 The sensor site locations are shown in the plan in **Appendix 5** and each sensor site has the facility to provide the following data: -
- Road surface temperature
  - Road Depth temperature. (around 300 cm below the road surface)
  - Air temperature (around 2m above the road surface)
  - Dew point (a measure of the humidity of the air)
  - Wind speed and direction
  - Road state (dry, wet etc.)
  - Chemical factor (residual de-icing chemical on road)
- 4.1.8 MeteoGroup UK has direct access to the information from the weather sensor sites, which improves forecasting accuracy.

<b>Document</b>	<b>Winter Service 2014/15</b>	<b>Revision</b>	<b>2</b>
<b>ARA Operational Plan &amp; Policy</b>	<b>Page 8 of 71</b>	<b>Date</b>	<b>21/01/2015</b>



## 4.2 Treatments

- 4.2.1 Road conditions often vary considerably across the South Ayrshire Council area due to topography, humidity, wind speed, wind direction, residual salinity and traffic volumes. These factors all influence the possibility of adverse conditions occurring.
- 4.2.2 Adverse conditions can occur for varying periods, day or night, throughout the winter period and can affect all or only parts of the road or footway network. Therefore the winter service comprises of the following forms of treatment: -
- Precautionary Salting
  - Reactionary Salting
  - Daytime Salting
  - Extreme Conditions Salting
  - Post Salting/Patrol Check
  - Snow Clearing
  - Condensed Patrol
- 4.2.3 Routes have been devised to ensure efficient coverage within reasonable timescales.
- 4.2.4 Routes will be updated on an annual basis to accommodate changes to the network.
- 4.2.5 Route Cards listing all treatment routes are held in the Operation Manager's Office with appropriate subsets at Depots.

## 4.3 Guidelines

- 4.3.1 When the weather forecast predicts that the road surface temperature is likely to fall to +1° Celsius, consideration shall be given to precautionary salting except where:-
- No moisture is expected on the road
  - There is enough residual salt on the road to deal with the expected conditions, or
  - The latest weather forecast information indicates that the temperature will rise and there will be no hazardous conditions.
- 4.3.2 Precautionary salt shall be spread at 10 g/m<sup>2</sup> in conditions of frost and light snow. Precautionary salt shall be spread at anything from 15 to 40 g/m<sup>2</sup> where freezing conditions are expected after rain; according to the amount of moisture present and the temperature expected.
- 4.3.3 Where ice has formed salt shall be spread at 20 to 40 g/ m<sup>2</sup> depending on the amount of ice present and the temperatures required to ensure rapid melt.
- 4.3.4 Winter Maintenance Precautionary Treatment Spread Rates

Weather Conditions	Definition	Spread Rates Salt (g/m <sup>2</sup> )
Light	Frost and/or light snow	10
Moderate	Freezing conditions after rain	15 to 40 (5 g/m <sup>2</sup> increments)
Severe	Continuous snow	40

#### 4.3.5 Snow Conditions:-

The following guidelines will be followed:-

- On receipt of the weather forecast indicating medium to heavy snow within six hours, carriageways should be gritted in accordance with **Section 4**. When the forecast is for rain to turn to snow the salting should be held back accordingly.
- Salting should be continued or restarted when snow starts to fall.
- Resources should generally be allocated to clear roads in the Priority shown in **Section 3.2**, with preference being given to those areas which have experienced deepest snowfalls and drifting
- Where it is likely that a road cannot be kept open, it is preferable to close it earlier in a planned manner than to wait until both gritters and travelling public become trapped.
- Ayrshire Roads Alliance will provide labour and non-specialist plant. When conditions are such that the maximum resources are inadequate will other assistance be sought. Ayrshire Roads Alliance will then call in help from other local authority resources or private contractors

#### 4.4 Treatments for snow

ROAD SURFACE CONDITIONS	AIR TEMP	TREATMENTS		
		Salt Spreading (g/m <sup>2</sup> )	Ploughing	Blowing
Ice Formed	Less than minus 5° C and stable	20 to 40	No	No
Snow covering exceeds 30 to 50mm	Less than minus 5° C and stable	20 to 40	Yes	No
Snow covering exceeds 30 to 50mm	Less than minus 5° and dropping	20 to 40	Yes	No
Snow accumulates due to prolonged falls	Less than minus 5° C and dropping	20 to 40	Yes (continuous)	Where applicable
Hard packed snow/ice less than 20mm thick	Greater than minus 5° C	20 to 40 (successive)	No	No

#### 4.5 Routes

##### 4.5.1 Carriageway Treatment Routes:-

- The routes for precautionary salting are shown in **Appendix 1** which is also available to view on the [Ayrshire Roads Alliance](#) website and the [South Ayrshire Council](#) website.
- The routes to be used for post-treatment, shall be the same routes as for precautionary salting shown in **Appendix 1**, or modified routes where appropriate.
- The routes to be used for snow clearing shall be the same routes as for precautionary salting shown in **Appendix 1**, or modified routes where appropriate.

##### 4.5.2 Carriageway Routes for Daytime Treatment:-

- If the temperature is predicted not to rise above 0° Celsius before 12 00 hours that day, the salting of the five Secondary Routes will commence as shown in **Appendix 2** which is also available to view on the [Ayrshire Roads Alliance](#) website and the [South Ayrshire Council](#) website.

Document	Winter Service 2014/15	Revision	2
ARA Operational Plan & Policy	Page 10 of 71	Date	21/01/2015

#### 4.5.3 The Secondary Routes will cover the following:-

- Roads which serve a substantial number of dwellings
- All C Class roads not included in Priority 1
- Residential roads with access difficulties
- unclassified rural roads with access difficulties

#### 4.5.4 The Tertiary Routes will cover the following:-

- Other council roads as shown in **Appendix 3**, which is also available to view on the [Ayrshire Roads Alliance](#) website and the [South Ayrshire Council](#) website, which may not normally be included within priorities 1 and 2 but which may be adversely affected by prolonged inclement weather. These will be treated as resources allow.

#### 4.5.5 Footway and Footpath Salting Routes:-

- A precautionary footway and footpath route covering Ayr Town Centre is shown in **Appendix 4**, which is also available to view on the [Ayrshire Roads Alliance](#) website and the [South Ayrshire Council](#) website.
- With limited resources available, the footways and footpaths in **Appendix 4**, other than those on the Ayr Town Centre route, will only be treated when the Head of Service – Ayrshire Roads Alliance considers this to be absolutely necessary (e.g. heavy snowfall or extensive icing). They will normally only be treated during daytime hours. It is unlikely that they will be treated during public holidays.

#### 4.5.6 The following priorities will apply for the treatment of footways and footpaths:-

- Urban shopping centres and precincts
- Other areas of high pedestrian concentration

#### 4.5.7 Trunk Road footways and footpaths in the South Ayrshire Council area are the responsibility of Transport Scotland and will not be treated by Ayrshire Roads Alliance.

### 4.6 Salt Bins

#### 4.6.1 Salt bins are provided for the storage of salt, which is for use on public roads and footways.

Salt bins are placed at strategic locations and a register shall be kept in the Roads Operations section within Burns House, 16 Burns Statue Square, Ayr KA7 1UT as

4.6.3 identified in **Appendix 6** which is available to view on [Ayrshire Roads Alliance](#) website and the [South Ayrshire Council](#) website. Salt bin locations can also be viewed on an interactive map on the [South Ayrshire Council](#) website.

Salt bins will be placed at the locations identified at the start of the winter season and throughout the winter season the bins are replenished with salt as necessary.

#### 4.6.2 In general, salt bins will be placed where a supply vehicle can draw alongside to replenish stocks, and where the following criteria are met:-

- The location is not on a precautionary carriageway salting route;
- The gradient is greater than 1 in 15 or at a junction with a known history of accidents;
- The location shall not obstruct the passage of pedestrians, a minimum of 1.5 metre wide clearance on the footway is required;
- The location shall not obstruct junction sightlines;
- The location is within an urban area;

Document	Winter Service 2014/15	Revision	2
ARA Operational Plan & Policy	Page 11 of 71	Date	21/01/2015

- The location is within the boundary of the public road. Ayrshire Roads Alliance will not provide salt bins in private roads or car parks for internal use by either South Ayrshire Council or any other public or private property such as schools, parks, hospitals, old people's homes etc unless a service level agreement is in place.

4.6.4 Requests for salt bins must be in writing using the application form which is available to download from the [Ayrshire Roads Alliance](#) website and the [South Ayrshire Council](#) website.

4.6.5 If an unresolved dispute arises between residents regarding the desirability of the location of a salt bin, it will be removed to the Depot.

4.6.5 Salt bins will not be provided in private roads that are not included in the List of Public Roads.

## 5.0 Labour Resources

5.1 Ayrshire Roads Alliance will ensure that sufficient trained personnel are available on out of normal hours standby to comply with the requirements of any planned treatment decision and to allow snow clearing operations to be executed when necessary. The personnel available are shown in **Appendix 7**. By virtue of the Data Protection Act 1998 this Appendix has restricted access.

5.2 Ayrshire Roads Alliance resources may be supplemented from other South Ayrshire Council resources, farmers and contractors, should conditions so warrant. The resources available are shown in **Appendix 10**.

## 6.0 Vehicle and Plant Resources

### 6.1 Specialist Plant

6.1.1 Specialist Winter Service plant available is shown in **Appendix 8**.

6.1.2 The current fleet replacement programme will ensure that Winter Service obligations can be met. Programmed repairs and servicing to the fleet will be carried out during the summer months. The remainder of the fleet will be inspected and serviced as per the Fleet Management Inspection and Servicing Schedule.

6.1.3 Prior to the start of the winter season, the Roads Service will carry out a 'dry' run of each route, including the fitting and removal of the spinner/demount/snow plough, as applicable, to every vehicle so equipped.

### 6.2 Plant Maintenance

6.2.1 Sufficient qualified motor fitters will be on standby during the winter maintenance season. In the event of mechanical breakdown or other mechanical failure, any necessary repairs will be carried out without delay to minimise disruption to response and treatment times.

6.2.2 All of the salt spreading equipment will be calibrated prior to the start of the winter season. Calibration will be carried out in accordance with the manufacturers' recommendations, tested and certificated. Re-calibration and testing will take place at any time during the winter maintenance season if doubts over the accuracy of spreading are indicated from salting records.

Document	Winter Service 2014/15	Revision	2
ARA Operational Plan & Policy	Page 12 of 71	Date	21/01/2015

### 6.3 Non Specialist Plant

- 6.3.1 Non-specialist plant will be provided to assist snow clearing operations when necessary. This plant will be inspected and serviced as per Fleet Management Inspection and Servicing Schedule. This plant is listed in **Appendix 9**.

### 6.4 Plant from Other Local Authority Resources, Farmers and Contractors.

- 6.4.1 Appropriate additional plant may be provided to Ayrshire Roads Alliance from other South Ayrshire Council resources, farmers and contractors for use, should conditions so warrant. This plant is listed in **Appendix 10**.

## 7.0 Salt and Fuel

- 7.1 Salt is purchased through the Scotland Excel Contract for the Supply and Delivery of Salt for Winter Maintenance.
- 7.2 Salt storage facilities are located at:-
- Meadowhead Depot near Coylton.....maximum capacity 4,000 Tonnes
  - Grangestone Depot near Girvan.....maximum capacity 1,500 Tonnes
- 7.3 The salt storage facility at Meadowhead Depot is a Salt Dome which stocks 6.3 mm fine grade rock salt to BS 3247:1991. The salt storage facility at Grangestone Depot is an external stockpile which stocks 6.3 mm fine grade rock salt. The location of the depots is shown in **Appendix 5**.
- 7.4 A loading shovel is available at each depot during the winter season. There are additional mechanical shovels available within the Roads Service to cover any contingency.
- 7.5 The maximum capacity storage level in the Salt Dome will be in accordance with the Salt Dome manufacturer's specification.
- 7.6 Fuel Stock Levels:-

Depot	Stock level at 1st October	Stock level at 1st October	Minimum stock level	Minimum stock level
	Derv	Gas Oil	Derv	Gas Oil
Meadowhead	12,000 (19,707 max capacity)	1,900 (2,340 max capacity)	6,707	1,340
Grangestone	22,000 (39,851 max capacity)	15,000 (19,421 max capacity)	19,851	9,421

## 8.0 Salt Testing & Application

- 8.1 Salt will be tested for compliance with the specification on delivery by the supplier in accordance with the contractual arrangements.
- 8.2 Independent samples will be submitted for testing to confirm suppliers' results and to monitor the condition of the salt in store as required.
- 8.3 Salt will be stocked to the following requirements:-

Depot	Stock level at 1 <sup>st</sup> October (Tonnes)	Minimum stock level between 1 <sup>st</sup> October and 1 <sup>st</sup> December (Tonnes)	Minimum stock level between 1 <sup>st</sup> December and 31 <sup>st</sup> January	Minimum Stock Level between 31 <sup>st</sup> January and 28 <sup>th</sup> February (Tonnes)
Meadowhead	4,000	2,000	2,500	2,000
Grangestone	1,500	500	1,000	500
<b>Total</b>	<b>5,500</b>	<b>2,500</b>	<b>3,500</b>	<b>2,500</b>

- 8.4 Rock salt should normally be used to treat carriageways, but if conditions warrant it, the Head of Roads – Ayrshire Roads Alliance or nominee, may authorise the use of 4:1 salt/abrasive grit mixture. The maximum size of abrasive grit should be 6mm.
- 8.5 Excessive salt spreading is economically and environmentally undesirable. Therefore it is essential that operational checks are continuous throughout the winter maintenance period to ensure that salt usage is maintained within the calibrated parameters.
- 8.6 Control devices will be fitted on all permanently mounted and demountable gritters to ensure that the rate of salt spread is indicated in grams / square metre (g / m<sup>2</sup>).
- 8.7 Salt usage will be monitored by the use of weighbridges at both depots. All movement of salt will be weighed both out and on return to the depot.

Location of Weighbridges
Meadowhead Depot, Coylton
Grangestone Depot, Girvan

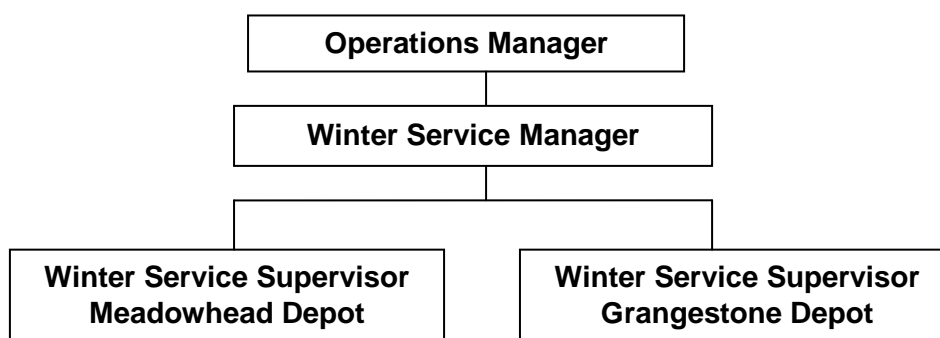
- 8.8 If salt resilience levels fall below 2,000 tonnes, salt conservation methods will be introduced as shown in the table below, which is recommended by the Well Maintained Highways – Code of Practice for Highway Maintenance Management Complementary Guidance: August 2011.

<p><b><u>Level 1 (Green) Service – Salt Stock Levels 2,000 Tonnes and above</u></b></p> <ul style="list-style-type: none"> <li>• Service levels as detailed in the Winter Operational Plan &amp; Policy.</li> <li>• Typical daily salt usage (snow conditions) 300T – <b>6 resilience days</b> or</li> <li>• Typical daily salt usage (frost &amp; ice only) 145 T – <b>13 resilience days</b></li> </ul>
<p><b><u>Level 2 (Amber 1) Service – Salt Stock Levels 1,500 Tonnes – 2,000 Tonnes</u></b></p> <ul style="list-style-type: none"> <li>• Only Primary 1 carriageway routes treated with pure salt, remaining priority carriageway routes reduced to half the normal spread rate or salt/grit mix at 50/50</li> <li>• Footway and footpath routes reduced to salt/sand mix at 50/50.</li> <li>• Grit bins replenished with salt/sand mix at 50/50.</li> </ul> <p>Typical daily salt usage (snow conditions) 265T – <b>7 resilience days.</b> or Typical daily salt usage (frost &amp; ice only) 135T – <b>14 resilience days</b></p>
<p><b><u>Level 3 (Amber 2) Service – Salt Stock Levels 1,000 Tonnes – 1,500 Tonnes</u></b></p> <ul style="list-style-type: none"> <li>• All carriageway routes reduced to half the normal spread rate or salt/grit mix at 50/50</li> <li>• Priority 1 footway and footpath routes treated with salt/sand mix at 50/50</li> <li>• Other footway and footpath routes treated with sand/grit mix at 50/50</li> <li>• Grit bins replenished with sand/grit mix at 50/50</li> </ul> <p>Typical daily salt usage (snow conditions) 170T – <b>8 resilience days.</b> or Typical daily salt usage (frost &amp; ice only) 85T – <b>17 resilience days</b></p>
<p><b><u>Level 4 (Red) Service – Salt Stock Levels less than 1000 Tonnes</u></b></p> <ul style="list-style-type: none"> <li>• Priority 1 carriageways reduced to half the normal spread rate or salt/grit mix at 50/50</li> <li>• Treat remaining carriageway routes with sand/grit mix at 50/50</li> <li>• All footway and footpath routes treated with sand/grit mix at 50/50</li> <li>• Grit bins replenished with sand/grit mix.</li> </ul> <p>Typical daily salt usage (snow conditions) 120T – <b>8 resilience days</b> or Typical daily salt usage (frost &amp; ice only) 50T – <b>20 resilience days</b></p>
<p>Assuming 5,500 tonnes of salt in stock at Depots for the start of winter our total resilience would be either</p> <p><b>18 days total resilience during periods of heavy snow.</b> or <b>38 days total resilience during periods of frost &amp; ice conditions.</b></p>

Document	Winter Service 2014/15	Revision	2
ARA Operational Plan & Policy	Page 15 of 71	Date	21/01/2015

## 9.0 Decision Making

### Organisation Chart



- 9.1 The Operations Manager will appoint trained personnel to the posts of Winter Service Manager.
- 9.2 The Winter Service Manager may consult the Duty Forecaster at MeteoGroup UK to clarify any aspect of the forecast e.g. in relation to the nature, extent and timing of the onset of adverse weather or hazardous conditions.
- 9.3 In the early afternoon of each day during the winter season, the Winter Service Manager will decide on the treatment to be carried out during the following 24 hours. This decision will be taken after considering all appropriate factors, including the following: -

- Weather forecast
- Existing or potential moisture on the road network
- Residual salt on the road
- Consultation with Winter Service Supervisors

- 9.4 The decision will be recorded on the electronic Vaisala Manager system.

The Treatment Decision will be transmitted via the Vaisala Manager system to: -

- Grangestone Depot and Meadowhead Depot.
- South Ayrshire Council Monitoring Station
- South Ayrshire Council Customer Contact Centre
- Motoring Organisations
- Police Scotland
- West Sound Radio
- Neighbouring authorities i.e.
  - i) North Ayrshire Council,
  - ii) Ayrshire Roads Alliance (East Ayrshire Council area),
  - iii) Dumfries and Galloway Council, and
  - iv) South West Area Trunk Road Operating Company

- 9.5 The decision will be posted on a bulletin board contained within MeteoGroup UK's website and on the Ayrshire Roads Alliance website and on the South Ayrshire Council website.
- 9.6 After the treatment decision has been made, the Winter Service Manager will check against the decisions by neighbouring authorities for consistency and reconsider if necessary.
- 9.7 A routine evening update will be provided by MeteoGroup UK's each evening around 19 00 hours. This update will be posted on their website and emailed to Ayrshire Roads Alliance.

<b>Document</b>	<b>Winter Service 2014/15</b>	<b>Revision</b>	<b>2</b>
<b>ARA Operational Plan &amp; Policy</b>	<b>Page 16 of 71</b>	<b>Date</b>	<b>21/01/2015</b>



- 9.8 If the evening update indicates a change in the forecast then, if necessary, the Winter Service Manager will amend the decision and issue an update to the Treatment Decision form. The amended Treatment Decision will be distributed in accordance with 9.4
- 9.9 If the forecast conditions turn from good to adverse at any time, then MeteoGroup UK will phone the Winter Service Manager, either at work or at home as appropriate.
- 9.10 If a further update is received from MeteoGroup UK out of office hours, or a report of unexpected hazardous conditions be received, the Winter Service Manager will amend the instructions as necessary, issue an updated Treatment Decision via Vaisala Manager and contact further staff as required to initiate any necessary actions.
- 9.11 Where appropriate, contact will be made by telephone with the adjacent authorities to ensure liaison.
- 9.12 The Winter Service Manager will contact the South Ayrshire Council Monitoring Station to advise of any change to planned actions. The South Ayrshire Council Monitoring Station will pass on notification of the change to: -
- Motoring Organisations
  - Police Scotland
  - West Sound Radio
- 9.13 On Saturdays, Sundays and holidays the lunch time forecast will be posted on the website and emailed as on a normal working day. The Winter Service Manager will complete the Treatment Decision on Vaisala Manager and carry out the other actions as on a normal working day.
- 9.14 In general, the decision taken should be altered as necessary as information changes. The reason for the original decision and any changes should be formally recorded.
- 9.15 Rotas for personnel are subject to the Data Protection Act 1998 and should not be passed to a third party without the permission of the person(s) concerned. Consequently this appendix is published under a separate cover and is only issued to operational staff.

## **10.0 Training**

- 10.1 Drivers of all Winter Service vehicles will hold appropriate licences and qualifications.
- 10.2 All personnel involved in the Winter Service will attend a briefing session on the content and operation of the Winter Service Operational Plan. This will be held prior to the start of the winter season.
- 10.3 Personnel involved in the management and decision-making process will undertake training provided by the weather forecast provider on familiarisation and interpretation of weather forecast information.
- 10.4 All personnel will be trained in dealing with potential emergency scenarios.

<b>Document</b>	<b>Winter Service 2014/15</b>	<b>Revision</b>	<b>2</b>
<b>ARA Operational Plan &amp; Policy</b>	<b>Page 17 of 71</b>	<b>Date</b>	<b>21/01/2015</b>

## **11.0 Health and Safety**

- 11.1 All Winter Service operations will be carried out in accordance with the Ayrshire Roads Alliance standard procedures with due regard to the Health and Safety at Work Act 1974 as amended.
- 11.2 As salt is removed from storage areas, a positive slope will be maintained not exceeding 60° to the horizontal to avoid danger to operatives and vehicles from the collapse of cliff walls of salt.
- 11.3 Care will be taken to ensure that salt storage and operations adjacent to stockpiles do not affect the adjacent environment.
- 11.4 Care and vigilance must be utilised to ensure that salt stockpiles do not become contaminated with foreign matter likely to cause damage to spreading vehicles and other road users.
- 11.5 Salt spreading will be carried out in such a manner as to avoid damage to other vehicles and pedestrians or other users of the road. Spread patterns will be adjusted to suit the carriageway width.
- 11.6 No vehicle will be driven above the legal speed limit at any time, and whilst salting on de-restricted dual carriageways at a speed no greater than 40 mph.
- 11.8 Precautionary salting will be carried out from the nearside lane of a dual carriageway.
- 11.9 All vehicles engaged in snow ploughing will be double manned where practicable.
- 11.10 The domestic driver's hours shall be adhered to, except in emergencies

## **12.0 Operational Communications**

- 12.1 Ayrshire Roads Alliance will make available a mobile telephone for all Winter Service Managers, Winter Service Supervisors and each winter service vehicle. Where the local terrain makes phone contact impossible over significant areas appropriate measures will be taken in accordance with health and safety requirements by means of risk assessments and method statements.
- 12.2 In periods of prolonged extreme weather a daily bulletin will be distributed to Elected Members and the South Ayrshire Council Corporate Management Team.

## **13.0 External Communications**

- 13.1 It is recognised that emergency services work most effectively when there is one point of out of normal hours contact. This would be manned by experienced and trained personnel with the expertise to receive calls from all sources and make decisions whether out of hours staff require to be contacted.
- 13.2 In recognition of the role of the Police during difficult weather conditions, the Police will be informed in advance of daily winter service activities. Ayrshire Roads Alliance will request appropriate assistance from the Police when arranging emergency road closures and when dealing with abandoned vehicles.
- 13.3 West Sound Radio and Motoring Organisations will also be informed in advance of daily winter service activities.

<b>Document</b>	<b>Winter Service 2014/15</b>	<b>Revision</b>	<b>2</b>
<b>ARA Operational Plan &amp; Policy</b>	<b>Page 18 of 71</b>	<b>Date</b>	<b>21/01/2015</b>

- 13.4 For the convenience of the general public, South Ayrshire Council Monitoring Station, a 24 hour facility for the reporting of hazardous road conditions and complaints is in operation. The contact number is **0300 123 0900**.
- 13.5 During office hours, personnel from Ayrshire Roads Alliance will be available to answer enquiries. Outwith office hours, the calls will be taken by the South Ayrshire Council Monitoring Station where trained staff will record the defect report. Where appropriate, messages will be immediately passed on to the relevant personnel. Non urgent reports will be advised to Ayrshire Roads Alliance personnel on the next working day after the defect was reported.
- 13.6 The Head of Roads – Ayrshire Roads Alliance or nominee will inform Motoring Organisations when severe local weather conditions are being experienced.
- 13.7 The Head of Roads – Ayrshire Roads Alliance or nominee will ensure that the treatment decision is posted on the Ayrshire Roads Alliance website and the South Ayrshire Council website.
- 13.8 Ayrshire Roads Alliance personnel will be trained to deal with enquiries from the public in a positive manner while imparting an appreciation of the difficulties of attending to complaints during prevailing adverse weather conditions.
- 13.9 National Radio, Television and Press will be dealt with by the Executive Director of Economy Neighbourhood and Environment or nominated senior staff. Local Radio and Press will be dealt with by Council's Communications Manager.

## **14.0 Arrangements at Boundaries with other Authorities**

### **14.1 Trunk Roads**

At each junction with the A77 and A78, South Ayrshire Council treats the carriageway to the give way / stop markings. The Trunk Road Operating Company (TROC), treat the Trunk Road main carriageways and slip roads including the lanes and splays at acceleration and deceleration lanes and splays.

### **14.2 Dumfries and Galloway Council**

<b>Roads to be Treated by Dumfries and Galloway Council</b>	<b>Roads to be Treated by Ayrshire Roads Alliance (South Ayrshire Council area)</b>
A714 each Authority covers their route to the boundary and turn around.	A714 each Authority covers their route to the boundary and turn around.
B7027 each Authority covers the route to their boundary and turn around.	B7027 each Authority covers the route to their boundary and turn around.
C46W / C1 each Authority covers the route to their boundary and turn around.	C1 / C46W each Authority covers the route to their boundary and turn around.
C1W / C72 each Authority covers the route to their boundary and turn around.	C72 / C1W each Authority covers the route to their boundary and turn around.

### 14.3 Ayrshire Roads Alliance (East Ayrshire Council area)

<b>Roads in South Ayrshire Council Area to be Treated by Ayrshire Roads Alliance (East Ayrshire area)</b>	<b>Roads in East Ayrshire Council area to be Treated by Ayrshire Roads Alliance (South Ayrshire area)</b>
<p>A70 from the South Ayrshire Council boundary at Shields Main to Coylton, turning at Meadowhead Depot for return to East Ayrshire.</p> <p>B741 from the South Ayrshire Council boundary at Grimmet to Straiton, turning at Straiton.</p> <p>B742 from the A70 junction at Coylton to the South Ayrshire Council boundary at Snipe Loch.</p> <p>C8 from junction with C64 west of Craigie to South Ayrshire Council Boundary south of C119 junction.</p> <p>C35 from the South Ayrshire Council boundary at Mossgiel Tunnel to the B744 junction at Largietoll Cottage.</p> <p>C64 from the C119 junction at Craigie Telephone Exchange to the C8 junction west of Craigie</p> <p>C119 from South Ayrshire Council boundary south east of Howcommon Farm to junction C64 at Craigie Telephone Exchange.</p> <p>C120 from the A759 junction west of Old Rome Farm to the South Ayrshire Council boundary at Caprington.</p> <p>U95 from the South Ayrshire Council boundary north west of Broomhill Trout Fishery to junction C21.</p>	<p>A713 from the B742 junction at Boghall to the South Ayrshire Council boundary at Sessionfield.</p> <p>A719 from the A76 at Crossroads to the South Ayrshire Council boundary south of Aird Farm.</p> <p>A759 from the East Ayrshire Council boundary at Old Rome Bridge to the U16 junction at the Cochrane Inn, Gatehead.</p> <p>B730 from the East Ayrshire Council boundary at Stair Bridge to the C3 junction at Stair Inn.</p> <p>B742 from the East Ayrshire Council boundary at Dalrymple Bridge to the B7034 junction in Dalrymple.</p> <p>B743 from the East Ayrshire Council boundary west of Muir Farm to junction A76 Kilmarnock Road, Mauchline.</p> <p>B744 from the East Ayrshire Council boundary east of Hill Farm to junction A76 at Crosshands.</p> <p>B7034 from the B742 junction in Dalrymple to the East Ayrshire Council boundary east of Knockjarder Farm.</p> <p>C11 from the East Ayrshire Council boundary at Backglen Burn to the East Ayrshire Council boundary at junction U32 at Dalvennan Farm.</p> <p>C21 from East Ayrshire Council boundary east of Laurieston Farm to A713 junction south east of Hollybush Mains.</p> <p>C119 from East Ayrshire Council boundary north east of Maintree Farm to junction C53 north west of East Mosside Farm.</p>

#### 14.4 North Ayrshire Council

Roads to be Treated by North Ayrshire Council	Roads to be Treated by Ayrshire Roads Alliance (South Ayrshire Council area)
U107 from the South Ayrshire Council boundary at the railway bridge to A759 Auchengate Interchange.	B730 from the North Ayrshire Council boundary at the railway bridge south of Drybridge to junction Shewalton Road, Drybridge.

#### 15.0 Information recording and analysis

- 15.1 Winter Treatment Records will be maintained and stored in the Vaisala Manager System for the South Ayrshire Council area of Ayrshire Roads Alliance.
- 15.2 Ayrshire Roads Alliance will keep daily records for all Winter Service operations. The records required are:-
- Decisions taken, when, why and by whom
  - Treatment records
  - Weather forecasts and actual weather experienced
  - Known accidents resulting from winter conditions
  - Response times achieved
  - Complaints by members of the public and road users and the action taken
  - For each depot quantities of de-icing materials used, in stock and on order
  - Plant and equipment deployment records and driver/operator logs
  - Appropriate financial records
  - Actual condition of the road surface, whether ice was present, whether the road surface was dry, damp or wet
- 15.3 No Action Reports and regular updates during severe weather and will be recorded in the Vaisala Manager System.

#### 16.0 Review

- 16.1 A review of the Winter Service operation will be carried out by the Ayrshire Roads Alliance Operations Manager at the end of each winter season. This review will include consideration for any improvement to the service delivery and any amendments to the Operational Plan and Policy.

#### 17.0 Arrangements for performance monitoring, audit, and updating

- 17.1 Ayrshire Roads Alliance submits an annual return to the Association for Public Service Excellence (APSE) Performance Networks on behalf of South Ayrshire Council to compare our performance against other participating Councils.
- 17.2 Ayrshire Roads Alliance will carry out during the 2014/15 winter period and subsequent periods, an internal audit of the service's performance in dealing with winter treatment and its conformity with the Winter Maintenance Process Chart **Appendix 11**.

Document	Winter Service 2014/15	Revision	2
ARA Operational Plan & Policy	Page 21 of 71	Date	21/01/2015

## APPENDIX 1 – PRIMARY CARRIAGEWAY TREATMENT ROUTES

Meadowhead Depot in Coylton operates seven Primary Treatment routes, mainly but not exclusively, confined to the north of the Council area; and includes the major towns of Ayr, Prestwick and Troon.

Grangestone Depot in Girvan operates three primary Treatment routes, mainly in the south of the Council area; and includes the major towns of Maybole and Girvan.

### Method

Acting on advice received from the Council's weather service provider, primary Treatment routes will receive precautionary treatment prior to the onset of frost / ice.

Included within the primary routes are all A class and B class roads and strategic C class and unclassified roads.

Roads which meet the council's criteria of precautionary treatment applied to a minimum of one road servicing council schools, and emergency service depots, plus roads servicing high concentrations of employment, commercial outlets and densely populated residential areas and other roads of strategic importance are also included.

The exception to this arrangement is when the Council's weather service provider advises that there is no risk of hazardous winter road conditions in any of the four climatic domains. In this event altered routes which exclude roads in a particular climatic domain are used.

A small number of roads within residential areas may be partly treated in order to optimise a predetermined routing system.

Document	Winter Service 2014/15	Revision	2
ARA Operational Plan & Policy	Page 22 of 71	Date	21/01/2015

Meadowhead Depot - Primary Carriageway Treatment Route 1			
Town /Village	Road Number	Description	
-	B742	From Meadowhead Roads Depot to A70 Hillhead Coylton	
Coylton	A70	Hillhead	
		Joppa	
		Ayr Road	
-		From Ayr Road Coylton to A77 Holmston Roundabout	
Ayr		Holmston Road	
		Station Roundabout	
		Station Bridge Road	
		Parkhouse Street	
		Burns Statue Square	
		A79	Station Road
			John Street
			Allison Street
			New Road
			Prestwick Road
Ayr Road			
Main Street			
The Cross			
Prestwick	Monkton Road (The Cross to Airport Loop Road)		
	Airport Loop Road		
	-	B746	From U98 to Main Street Loans
	Loans	A759	Main Street Loans
-	From Main Street Loans to A78 Auchengate Interchange		
	From A78 Auchengate Interchange to East Ayrshire Council boundary at Old Rome Bridge Gatehead		
Gatehead	Milton View (from Old Rome Bridge to Railway Level Crossing)*		
	Main Road (from Railway Level Crossing to Cochrane Inn)*		
-	B750	From A759 at Boghead to Kilmarnock Road Dundonald	
Dundonald		Kilmarnock Road	
	-	Kilnford Drive (From Drybridge Road to A759)	
		Castle Drive	
		Newfield Drive (From Dundonald Primary School to Castle Drive only)	
		B730	From A759 to North Ayrshire Council boundary at south of Railway Bridge Drybridge

\* Treated on behalf of Ayrshire Road Alliance (East Ayrshire Council area) under cross boundary arrangements.

Meadowhead Depot - Primary Carriageway Treatment Route 1 (continued)		
Town /Village	Road Number	Description
Drybridge	B730	Main Street (from South Ayrshire Council boundary south of Railway Bridge to Shewalton Road Drybridge)*
Dundonald		Drybridge Road
		Main Street
-		From Main Street Dundonald to A77 at Bogend Toll
		From A77 at Bogend Toll to A719 at Rabbit Wood
		From A719 at Fail Toll to Croft Street Tarbolton
Tarbolton		Croft Street
		Cunningham Street
		Montgomerie Street
		From Montgomerie Street Tarbolton to B743 near Carngillan
-	C92	From B730 near Caldrongill to C8 near Plewlands
	C8	From A719 near Adamhill to C64 west of Main Street Craigie
	U80	From B730 near Laigh Langside to C8 north of High Langside
	B743	From B730 at Carngillan to B744 at Weston Brae Annbank
		Weston Brae
Annbank	B744	Brown's Crescent (excluding cul-de-sac between No.2 and No.31)
		Weston Avenue
	-	Goodwin Drive
		Braeside
		Whitehill Crescent
-	B744	From Weston Avenue Annbank to A70 at Belston

\* Treated on behalf of North Ayrshire Council under cross boundary arrangements.



Meadowhead Depot - Primary Carriageway Treatment Route 2		
Town / Village	Road Number	Description
Ayr	B743	Heathfield Road
	-	Low Road
	A719	High Road
		Main Road
		Whitletts Road
		King Street (from Whitletts Road to John Street only)
Prestwick	-	Hunter's Avenue
		Doon Avenue
		Waterloo Road (From Doon Avenue to Ayr Road)
	B743	From A77 Whitletts Roundabout to C150 St Quivox Road
-	C150	St Quivox Road (from B743 to A77)
	B743	From C150 St Quivox Road to B742 Sandyford Road Mossblown
Mossblown		Sandyford Road
-	B742	From Sandyford Road Mossblown to A77 at Sandyford Toll roundabout
	A719	From B742 east of Sandyford Toll roundabout across East Ayrshire Council boundary to A76 Crossroads roundabout
	B744	From A76 at Crosshands across South Ayrshire Council boundary to Garden Street Tarbolton
		Garden Street
Tarbolton	C17	Westport (from Cunningham Street to Gallowhill Avenue)
	-	Gallowhill Avenue
		Langlands Drive
		Princes Street
		Back Street
		Sandgate Street
		James Street
-	B744	From Montgomerie Street Tarbolton to B743 south of Walston Farm
	B743	From B744 at Carngillan across East Ayrshire Council boundary to Ayr Road Mauchline
Mauchline		Ayr Road*
-		Loudoun Street*
-		From B744 to Mauchline Road Mossblown
Mossblown		Mauchline Road
-	B742	Annbank Road from B743 Mauchline Road to B744 at Weston Smithy

\* Treated on behalf of Ayrshire Roads Alliance (East Ayrshire Council area) under cross boundary arrangements.

<b>Meadowhead Depot - Primary Carriageway Treatment Route 3</b>		
<b>Town / Village</b>	<b>Road Number</b>	<b>Description</b>
Ayr	C39	Corton Road (from A713 to A77)
-	A719	Dunure Road (from Longhill Avenue Ayr southwards to C12 at Dunure Mains Farm)
Dunure	C12	Castle Road
		Station Road
-	A719	From C12 at Dunure Mains Farm to B7023 at Pennyglen
		From B7023 at Pennyglen to Kirkoswald Road Maidens
Maidens	-	Kirkoswald Road
		Shanter Road (from Kirkoswald Road to Maidens Primary School entrance only)
-	A719	Turnberry Road
Turnberry		From Turnberry Road Maidens to Maidens Road Turnberry
-		Maidens Road
Dailly	B741	From A77 at Bridgemill Girvan to Main Street Dailly
		Main Street
-		Linfen Road
		From Linfen Road Dailly to Main Street Straiton
Straiton		Main Street
-	C1	Newton Stewart Road
		Straiton - Newton Stewart Road (from Straiton to Tarlaw Bridge)
Straiton	B741	Dalmellington Road (from Main Street to No.34 only)
-	B7045	Kirkmichael Road
		From Kirkmichael Road Straiton to Straiton Road Kirkmichael
Kirkmichael	-	Straiton Road
		Bolestyle Road (from Straiton Road to Bolestyle Crescent (north junction only))
		Bolestyle Crescent
		Woodside Avenue (from Bolestyle Crescent to Kirkmichael Primary School entrance only)
-	B7045	From Straiton Road Kirkmichael to A77 at Hogg's Corner
Minishant	-	Mure Place
		Merrick Place (to Minishant Primary School only)
Ayr	A79	Maybole Road (slip lane off A77 only)

Meadowhead Depot - Primary Carriageway Treatment Route 4		
Town / Village	Road Number	Description
Ayr	A713	Dalmellington Road
		Castlehill Road
	-	Ashgrove Street (from Castlehill Road to Dongola Road only)
		Dongola Road (from Ashgrove Street to Holmston Road only)
	A70	Killoch Place
	-	Alloway Street
		High Street
		Boswell Park (from Douglas Street to Carrick Street only)
		Carrick Street
		Fullarton Street (from Carrick Street to Douglas Street only)
		Barns Street
		Wellington Square
		Bath Place
		Pavilion Road
		Esplanade (from Pavilion Road to Bath Place only)
		Dalblair Road
		Kyle Street
		Smith Street
		Mill Street
	A70	Miller Road
	A719	Racecourse Road
		Doonfoot Road
		Dunure Road (from Racecourse Road to Longhill Avenue only)
	-	Longhill Avenue (from Dunure Road to Cairnsmore Drive only)
		Corserine Road (from Cairnsmore Drive to Newark Avenue only)
		Newark Avenue (from Corserine Road to Crossburn only)
		Crossburn
		Browncarrick Drive (from Crossburn to Dunure Road only)
		Scaur O'Doon Road (from Dunure Road to Abbots Way only)
		Abbots Way (from Scaur O'Doon Road to Greenan Way only)
		Greenan Way
		Greenan Road (from Greenan Way to Earls Way only)
		Earls Way
		Longhill Avenue (from Cairnsmore Drive to High Maybole Road)
		The Loaning
		Lauchlanglen Road
		Finlas Avenue
		Carcluie Crescent
		Shielhill
		Braden Drive
		Bathurst Drive
		Merkland Road
		Kersepark (from Merkland Road to Maybole Road only)
		Kincaidston Drive

Meadowhead Depot - Primary Carriageway Treatment Route 4 (continued)		
Town / Village	Road Number	Description
Ayr	-	Snowdrop Square
		Hillfoot Road (from Holmston Road to Holmston Drive)
		Holmston Drive (from Hillfoot Road to Caledonia Road)
		Caledonia Road (from Holmston Drive to Armour Drive)
		Armour Drive
		Glencairn Road (from Armour Drive to Holmston Drive)
		Holmston Drive (from Glencairn Road to Caledonia Road)
		Hillfoot Road (from Holmston Drive to Dalmellington Road)
		Belmont Road
	B7024	Monument Road
		Alloway
	-	Doonholm Road (from Murdoch's Lone to Alloway)
		Greenfield Avenue
		Cunning Park Drive
		Gearholm Road
		Racecourse View
		Corsehill Road
		Midton Road (from Carrick Road to Ronaldshaw Park)
		Ronaldshaw Park
		Blackburn Road
		Blackburn Drive (from Blackburn Road to Seafield Road)
		Seafield Road
		Lochlea Drive
		Forehill Road (from Lochlea Drive to Hillfoot Road)
		Shavin Brae (from Hillfoot Road to Crofthead Road)
		Crofthead Road
		Rowan Crescent (from Crofthead Road to Pine Brae)
Coylton	-	Barclaugh Drive
		Woodhead Road (from Barclaugh Drive to Drumcoyle Drive)
		Drumcoyle Drive (from Woodhead Road to No.5)
		The Beeches (from Joppa to Broadwood)
		Broadwood
		Highpark Road
		St Brides Way
		Garvine Road
		Laighpark Road (from Garvine Road to Ayr Road)

Meadowhead Depot - Primary Carriageway Treatment Route 5		
Town / Village	Road Number	Description
-	B746	From A78 Loans off slip road to U98 Corraith Road
	U98	From B746 to U99
	U99	From U98 to Townend Road Symington
Symington	U99	Townend Road
		Main Street
	-	Symington Road North (from Main Street to bus turning circle)
		Bus turning circle at Symington Road North
	C39	Symington Road South (from Main Street to access road to Stockbridge Farm)
		Brewlands Road
	-	Mount Avenue (from Brewlands Road to Lawhill Road only)
		Lawhill Road
-		Brewlands Crescent (from Lawhill Road to Brewlands Road only)
	C39	From Brewlands Road Symington to B730 at Coodham
	B751	From B730 at Coodham to A759 at Old Rome
	C128	Harperland Road (from A759 to B730)
Troon	C32	Old Loans Road (from B730 Main Street Dundonald to A759 Main Street Loan)
		Central Avenue
		North Drive (from Central Avenue to Buchan Road only)
		Buchan Road (from North Drive to Scott Crescent)
		Burns Road (from Buchan Road to Scott Crescent only)
		Scott Crescent
		Deveron Road
		Staffin Road (from Deveron Road to Garry Place only)
		Garry Place (from Staffin Road to Sark Drive only)
		Sark Drive
		Euchan Place
	B746	Kilmarnock Road
		Beach Road
		Burnfoot Avenue
		Kyle Drive
		Walker Avenue
		Muir Drive
		Barassiebank Lane
	B746	North Shore Road
		Barassie Street
		Burnside Place
		St Meddans Street (from South Beach to Barassie Street only)
		Church Street
		Bentinck Drive (from St Meddans Street to Yorke Road only)
		Victoria Drive (form Bentinck Drive to Golf Crescent only)
		Golf Crescent
		Yorke Road (from Bentinck Drive to Fullarton Drive only)
		Harling Drive

Meadowhead Depot - Primary Carriageway Treatment Route 5 (Continued)		
Town / Village	Road Number	Description
-	B746	From A759 Main Street Loans to U98 Corraith Road
Prestwick	-	Monkton Road (from Shawfarm Roundabout to Welsh Road)
		Shawfarm Road (from A79 to Marsmount Road)
		Marsmount Road
		Monument Crescent (from Marsmount Road to Shaw Road)
		Shaw Road (from Monument Crescent to Shawfarm Road)
		Shaw Road (from Shawfarm Road to Sherwood Road)
		Sherwood Road (from Shaw Road to Outdale Avenue)
		Outdale Avenue
		Marchburn Avenue
		Indale Avenue
		Outdale Avenue
		Briarhill Road
		Crofthead Road
		Alexandra Avenue
		Caerlaverock Road
		Sandfield Road
		Bellevue Road (from Sandfield Road to Adamton Road North)
		Biggart Road
		East Road (from Biggart Road to St Quivox Road)
		St Quivox Road
		Adamton Road North
		Adamton Road South (from Biggart Road to Auchencruive Avenue)
		Auchencruive Avenue
		St Andrew's Avenue (from Auchencruive Avenue to Biggart Road)
		East Road (from Biggart Road to Heathfield Road)
		Hunter's Avenue
		Afton Avenue
		Adamton Road South (from Afton Avenue to Auchencruive Avenue)
		Bellevue Road (from Sandfield Road to Main Street)
		Crandleyhill Road
		Nursery Avenue
		Kirkhill Crescent
Ayr	-	Hunters Avenue
		Northfield Avenue
		St Georges Avenue
		McCalls Avenue
		Walker Road

Meadowhead Depot - Primary Carriageway Treatment Route 6		
Town / Village	Road Number	Description
-	B742	From Meadowhead Roads Depot to B744 at Weston Brae
Tarbolton	B744	Burns Street
	C17	Westport
-		From Westport Tarbolton to A719 near Torcross
Ayr	-	Maryfield Road
		Annpit Road (from Maryfield Road to Seaforth Road)
		Viewfield Road (from New Road to Russell Drive)
		Russell Drive
	B747	Craigie Road
	-	Craigie Way
		Hayhill
		Mainholm Road
		Low Road (from High Road to James Campbell Avenue)
		James Campbell Avenue
		Glenmuir Road
		Sloan Street (from Glenmuir Road to Ferguson Street)
		Ferguson Street (from Sloan Street to Galloway Avenue)
		Galloway Avenue
		Waggon Road
		York Street
		North Harbour Street
		Chalmers Road
		Belmont Avenue
		Fenwickland Avenue
		Peggieshill Road
		Annfield Glen Road
		Burnbank Road
-	U116	University Hospital Ayr Access Road
Coylton	-	Carbieston Avenue (from A70 to Lorne Terrace only)
-	B730	From Stair Inn to B743 at Carngillan
Mossblown	-	Acron Avenue
		Drumley Drive
		Station Road (from Annbank Road to Mossgreen Place)
		Mossgreen Place
		Afton Avenue
		Church Drive

Meadowhead Depot - Primary Carriageway Treatment Route 7		
Town / Village	Road Number	Description
-	A713	From B742 to A77 Bankfield roundabout
Ayr	A79	Maybole Road
		St Leonards Road
		Carrick Road
		Beresford Terrace
		Killoch Place (from Beresford Terrace to Miller Road only)
	A70	Miller Road
	A719	Alloway Place
		Wellington Place
		Fort Street
	C146	South Harbour Street (from Fort Street to South Beach Road)
	-	South Beach Road
	A719	South Harbour Street (from Fort Street to New Bridge Street)
		New Bridge Street
		Sandgate
	-	Fullarton Street
		Douglas Street
		Boswell Park (from Douglas Street to Sandgate only)
		Main Street (from King Street to Waggon Road only)
		New Road (bus corridor only)
-	B739	From A719 to Tarbolton Road Monkton
Monkton		Tarbolton Road
		Baird Road
		Kilmarnock Road (from Baird Road to Main Street)
-	C15	Main Street
-	C1	From Main Street Monkton to A78 Monktonhead roundabout
Monkton	C1	From A77 Dutch House roundabout to Kilmarnock Road Monkton
	B739	Station Road
Troon	B749	Monktonhill Road
	C52	Southwood Road
	B749	Craigend Road
		South Beach
		Ayr Street
	-	Templehill
		Link Road to Harbour Road
	B746	Harbour Road
		Port Ranald Drive
	-	Jubilee Road
A759	Portland Street	
	Dundonald Road	
Loans		Troon Road
-	B730	From A77 northbound off slip road to B730 roundabout at Coodham



<b>Meadowhead Depot - Primary Carriageway Treatment Route 7 (continued)</b>		
<b>Town / Village</b>	<b>Road Number</b>	<b>Description</b>
-	C39	Symington Road South (from A77 southbound off slip road via overbridge to access road to Stockbridge Farm)
	C74	From A70 to B742
	U77	From B742 to Hole Road Coylton
Coylton	-	Hole Road

Grangestone Depot - Primary Carriageway Treatment Route 1		
Town / Village	Road Number	Description
Girvan	-	Ladywell Avenue
-	A714	From A77 Shalloch Park Roundabout Girvan to U52 Muck Road Pinwherry
	U52	From A714 to Pinwherry Community Centre
	A714	From U52 Muck Road to C72 Gowlands Terrace Barrhill
Barrhill	C72	Gowlands Terrace Barrhill
-		From Gowlands Terrace Barrhill to Barrhill Railway Station
Barrhill	A714	Main Street
-		From Main Street Barrhill to Dumfries and Galloway Council boundary at Wheeb Bridge
		B7027
Girvan	B7035	Coalpots Road (from A77 Shalloch Park roundabout to Piedmont Road)
	-	Piedmont Road (from Coalpots Road to Mote Hill Road)
		Mote Hill Road
		South Park Avenue (from Mote Hill Road to Wreck Road)
		Wreck Road
	B7035	Piedmont Road (from Dalrymple Street to Mote Hill Road)
		Coalpots Road (from Piedmont Road to South Park Avenue)
	-	South Park Avenue (from Coalpots Road to Mote Hill Road)
		Victory Park Road (from South Park Road to Wesley Road)
		Wesley Road
	B7035	Coalpots Road (from South Park Avenue to The Avenue)
	-	The Avenue
	B7022	Church Square
		Hamilton Street
		Montgomerie Street
	B7035	Coalpots Road (from The Avenue to B734 at Brae Toll)
	-	Bridge Street (from A77 to Newton Kennedy Bridge)
Newton Kennedy		
Newton Place		
Golf Course Road (Newton Place to A77)		

<b>Document</b>	<b>Winter Service 2014/15</b>	<b>Revision</b>	<b>2</b>
<b>ARA Operational Plan &amp; Policy</b>	<b>Page 33 of 71</b>	<b>Date</b>	<b>21/01/2015</b>

Grangestone Depot - Primary Carriageway Treatment Route 2		
Town / Village	Road Number	Description
-	B734	From A714 at Hallowchapel to Main Street Colmonell
Colmonell		Main Street
		Rowantree Street
-		From Rowantree Street Colmonell to C121 at Liggetcheek
	C121	From B734 at Liggetcheek to A77 near Bennane
	B734	From A77 at Redburn House to C121 at Liggetcheek
Ballantrae	C59	From B734 at Knockdollar to Mains Road Ballantrae
		Mains Road
	-	The Vennel
		Foreland (from The Vennel to Shore Road)
-		Shore Road
-	C45	From A77 south of Ballantrae Bridge to Craigneil Road Colmonell
Colmonell		Craigneil Road
	-	Haddows Row
		Kirkhill Crescent
-	C81	From B734 at Jubilee Bridge to A713 north of Daljarrock Bridge
	B734	From A713 at Pinmore Bridge to Stinchar Road Barr
Barr	-	Stinchar Road
		Changue Road (from Glenginnet Road to Barr Primary School)
	U66	Glenginnet Road (from Stinchar Road to No.85)
-		From Glenginnet Road Barr to U27 at South Balloch
	B734	From Stinchar Road Barr to B7035 at Old Dailly
	B7035	From B734 at Old Dailly to B741 Linfern Road Dailly
Dailly	C150	Bridge Street
		Woodside
	-	The Loaning
-		Back Road (from The Loaning to Bridge Street)
	C30	From B7035 at Lovestone to B734 at Penkill
	B734	From B7035 at Old Dailly to A77 at Bridge Mill Roundabout Girvan

Grangestone Depot - Primary Carriageway Treatment Route 3		
Town / Village	Road Number	Description
-	C29	From B741 at Lochmodie Bridge to Dailly Road Maybole
Maybole		Dailly Road
	-	Ladywell Road
		Society Street
		Abbot Street
		Kirkland Street
		Redbrae
		Cargill Road
		Cargill Avenue
		Kilhenzie View
		Elms Drive (from Cargill Avenue to Elms Crescent)
		Elms Crescent
		Ashgrove (excluding cul-de-sac between No.16 and No.18)
		Ashgrove Avenue
		Gardenrose Path (from Cargill Road to Fineview Place)
		Minnoch Crescent
		Kildoon Drive (excluding cul-de-sacs)
		Kincraig Avenue
		Queen's Terrace
		Burns Drive
		Gallowhill Avenue
		McAdam Way (excluding cul-de-sac between No.33 and No.55)
		Whitefaulds Avenue
		Mochrum Avenue (excluding cul-de-sac between No.10 to No.32)
		Whitefaulds Crescent
		Ladyland Road
		Coral Glen
		Welltrees Street
		Carrick Street
		Greenside
		John Knox Street
	B7023	St Cuthbert Road
	B7024	Barns Road
	-	B7023
Crosshill	From Crosshill Road Maybole to King Street Crosshill	
-	King Street	
	Dailly Road	
-	C88	From Dailly Road Crosshill to B741 at Rowanston Toll
Crosshill		From B741 at Cloyntie Toll to Dalhowan Street Crosshill
	Dalhowan Street	
	-	Milton Street
		Kirkbride Crescent
Carrick Drive		
-	C31	Kirkmichael Road (from Carrick Drive to Dalhowan Street)

Grangestone Depot - Primary Carriageway Treatment Route 3 (continued)		
Town / Village	Road Number	Description
-	B742	From A77 at Nether Culzean to Dalrymple Bridge
Dalrymple		Main Street (from Dalrymple Bridge to Garden Street)*
-	B7034	Garden Street (from Main Street to South Ayrshire Council boundary at Purclewan Burn)*
-		From East Ayrshire Council boundary at Purclewan Burn to A77 near Carcluie House.
Ayr	C39	Doonholm Road (from A77 to Murdoch's Lone)
		Murdoch's Lone
-	B7024	Alloway (from Murdoch's Lone to High Maybole Road)
-		High Maybole Road (from Alloway Ayr to Alloway Road Maybole)
Maybole		Alloway Road
	Barns Terrace	
-	B7023	Culzean Road
-		From Culzean Road Maybole to A719 at Pennvglen

\* Treated on behalf of Ayrshire Roads Alliance (East Ayrshire Council area) under cross boundary arrangements.

## **APPENDIX 2 – SECONDARY CARRIAGEWAY TREATMENT ROUTES**

Meadowhead Depot in Coylton operates three secondary gritting routes confined to the north of the council area and treats C class roads and roads within residential areas.

Grangestone Depot in Girvan operates two secondary gritting routes, confined to the south of the council area and treats mainly C class roads.

### **Method**

Acting on advice received from the Ayrshire Roads Alliance weather service provider, secondary gritting routes will receive treatment during daytime hours at the discretion of the Winter Service Manager when resources are available.

A small number of roads within residential areas may be partly treated in order to optimise a predetermined routing system. This is not reflected in the abridged routes appended here.

<b>Document</b>	<b>Winter Service 2014/15</b>	<b>Revision</b>	<b>2</b>
<b>ARA Operational Plan &amp; Policy</b>	<b>Page 37 of 71</b>	<b>Date</b>	<b>21/01/2015</b>

Meadowhead Depot - Secondary Carriageway Treatment Route 1		
<b>This route will normally be gritted during daytime hours only.</b>		
Road Number	Road Name	Description
C116	Sundrum - Bridge of Coyle Road	From B742 at Bridgend Cottage to Woodside Road Coylton
C2	Belston - Woodside - Stair Road	From A70 south east of Belston to East Ayrshire Council boundary at Springs
		From South Ayrshire Council boundary at Springs to B730 south of Stair*
C94	Tarbolton Station Road	From B730 at Yett to B730 at Strandhead Cottage.
C107	Drumley - Neilshill Road	From C17 at Neilshill to B743 Mauchline Road Mossblown
C115	Parkmill Road	From B730 Montgomerie Street Tarbolton to C114 south west of Barrhill
C114	Largie Road	From B743 east of Failford to B744 at Largie Toll Cottage
C35	Mossgiel - Skeoch Road	From C114 at Largie Toll Cottage to East Ayrshire Council boundary at Mossgiel Tunnel
		From South Ayrshire Council boundary at Mossgiel Tunnel to A76 at Burns Memorial Cottages*
C63	Lochlea Road	From B744 south east of Mossbog Cottage to A719 east of Fairwells
C53	Carnell House - Gatehead Road	From A719 at Fiveways to C119 at Dollarshill
C119	Maintree - Howcommon Road	From C53 at Dollarshill to C64 Main Street Craigie
C138	Langlands - Underhills Road	From B730 at Craigie Mains Cottage to A77 near Langlands
C106	Adamton Mains Road	From C138 at Pow Bridge to B739 near Adamton House
C37	Barrackhill - Gibbsyard Road	From B743 south of St.Quivox to B744 at Broadhead
C105	Knocksoul Road	From A70 east of Bellsbank to C74 south of Knocksoul
C39	Corton Bridge - Sessionfield Road	From C74 near Wee McNairston to A713 south west of Mosshill
C73	Pleasantfield Road	From B7034 at Carcluie to C39 at High Corton
C21	Craigs Road	From A713 at Milreoch to South Ayrshire Council boundary south east of Kerse Park*
		From East Ayrshire Council boundary south east of Kerse Park to B742 north west of Carbieston Mains
Town / Village	Road Number	Description
Coylton	-	Carbieston Avenue (from Lorne Terrace to Craig View only)
		Craig View
		Corsehill Crescent

\* Treated on behalf of Ayrshire Roads Alliance (East Ayrshire Council area) under cross boundary arrangements.

Document	Winter Service 2014/15	Revision	2
ARA Operational Plan & Policy	Page 38 of 71	Date	21/01/2015

Meadowhead Depot - Secondary Carriageway Treatment Route 2		
This route will normally be gritted during daytime hours only.		
Town / Village	Road Number	Description
Ayr	-	Masonhill Road
		Cedar Road
		Briar Grove (from Cedar Road to Willow Park)
		Willow Park
		Larchwood Road
		Rowan Road (from Larchwood Road to Dalmellington Road)
		Nursery Road
		Glendale Crescent
		Ewenfield Road
		Ewenfield Avenue
		Bellevale Avenue
		Lamford Drive
		Glenalla Crescent
		Craig Stewart Crescent
		Mount Charles Crescent
		Baird Road (from Greenfield Avenue to Cambusdoon Drive and from Cairn Crescent to Cambusdoon Drive)
		Cairn Crescent
		Cambusdoon Drive
		Woodend Road
		Whin Hill Road
		Taybank Drive
		Sunningdale Avenue (from Taybank Drive to Longbank Avenue)
		Longbank Avenue (from Sunningdale Avenue to Longbank Road)
		Longbank Road (from Longbank Avenue to Monument Road)
		Belmont Drive
		Meadowpark Drive
		Chalmers Avenue
		Forehill Road (from Lochlea Drive to Lothian Road)
		St Phillans Avenue (from Lothian Road to Leslie Crescent)
		St Andrew's Street (from Leslie Crescent to Castlehill Road)
		Craigie Avenue
		Albert Terrace
		Elba Street (from John Street to James Street)
		George Street (from James Street to Limonds Wynd)
		Limonds Wynd (from George Street to King Street)
		Seaforth Road (from Annpit Road to East Park Road)
		East Park Road
		Cambuslea Road
		West Sanquhar Road
		Somerset Road
		Back Hawkhill Avenue

Meadowhead Depot - Secondary Carriageway Treatment Route 2 (continued)		
This route will normally be gritted during daytime hours only.		
Town / Village	Road Number	Description
Ayr	-	Lochside Road
		Lawson Street
		Wilson Street
		Link Road between Back Hawkhill Avenue and Hawkhill Avenue
		Hawkhill Avenue (from Link Road to Back Hawkhill Avenue to Whitletts Road)
		James Campbell Road
		Churchill Crescent
		Westwood Avenue
		Thornyflat Road
Prestwick		Simple Road
		Obree Avenue (excluding cul-de-sacs)
		Pentland Drive
		St Quivox Road (from Adamton Road North to Main Street)
		Grangemuir Road (from Main Street to Midton Road)
		Midton Road
		Station Road (from Midton Road to The Cross)
		Sherwood Road (from Outdale Avenue to Glenburn Road)
		Glenburn Road (from Sherwood Road to Shawfarm Road)



Meadowhead Depot - Secondary Carriageway Treatment Route 3		
This route will normally be gritted during daytime hours only.		
Town / Village	Road Number	Description
Troon	-	Fullarton Drive
		Lochend Road
		Bentinck Crescent
		Bentinck Drive (from Craigend Road to Yorke Road)
		St Meddans Street (from Barassie Street to Dundonald Road)
		Logan Drive
		Campbell Drive
		Fraser Avenue
		Kenmore
		Marr Drive
		Donald Crescent (from Logan Drive to Brown Avenue)
		Brown Avenue (from Donald Crescent to Brodie Avenue)
		Brodie Avenue
		Gillies Street
		Wallacefield Road (from Logan Drive to Donald Crescent)
		Donald Crescent (from Wallacefield Road to Dundonald Road)
		Ottoline Drive
		Lady Margaret Drive
		Balgonie Crescent
		Wilson Avenue
		Hunter Crescent
		Walker Avenue
		Johnston Drive (from Walker Avenue to Queen's Drive)
		Queen's Drive
		Barassie Bank Lane (from Queen's Drive to Beach Road)
		Beach Road (from Kilmarnock Road to Kilkerran Drive)
		Kilkerran Drive
		Carrick Road
		Firth Road
		Arran Road
		Gailles Road
		Hillhouse Road (from Gailles Road to Beach Road)
		Hillhouse Gardens (from Hillhouse Road to Barassie Railway Station)
		Lang Road
		Auchengate
		Lochgreen Avenue (from Auchengate to Lang Road)
		Westward Way
		Goatfell View
		Adams Gate (from Goatfell View to Links Crescent)
		Links Crescent (excluding cul-de-sac south west of No.31)
		Whins Road
		Milton Crescent
		Calder Avenue

Document	Winter Service 2014/15	Revision	2
ARA Operational Plan & Policy	Page 41 of 71	Date	21/01/2015

Meadowhead Depot - Secondary Carriageway Treatment Route 3 (Continued)		
<b>This route will normally be gritted during daytime hours only.</b>		
Town / Village	Road Number	Description
Troon	-	Coyle Park (excluding cul-de-sac north of No.10)
		Dornal Drive
		Spallander Road
		Lugar Place
		Spey Road (from Lugar Place to Deveron Road)
		North Drive (from Afton Gardens to Alldersyde Avenue)
		Lochlea Avenue
		West Crescent
		Merrick Avenue
		Mossgiel Avenue
		Alldersyde Avenue (from North Drive to Lochlea Avenue)
Loans	-	Collins Drive
		Craikslan Place
		Kyle Crescent
Dundonald	-	Kilnford Crescent (from Kilnford Drive to Old Auchans View))
		Old Auchans View
		Bruce Avenue
		Warly Drive
		Earl Drive (from Kilmarnock Road to Earl Rise)
		Earl Rise
Tarbolton	-	St Andrews Way
		Red Rose Way
		Bard Drive
		Springfield Road
		Smithfield Crescent
		Fail Avenue
		Mansefield Road
Road Number	Road Name	Description
C96	Muirhill Road	From B730 north west of Muirmill to B751 south-west of Fortacres

Grangestone Depot - Secondary Carriageway Treatment Route 1		
<b>This route will normally be gritted during daytime hours only.</b>		
Road Number	Road Name	Description
C44	Dailly - Turnberry Road	From B741 at Dailly to A77 at Turnberry
C28	Blawearie Road	From A77 south-west of Kirkoswald to A719 north-east of Maidens
C60	Ladycross Road	From B7023 east of Pennyglen to B7024 north of Maybole
C58	Ballochbrae - Chapelton Road	From B7023 at Ballochbrae to B7045 at Chapelton
C46	Harkiston Smithy - Maybole Road	From B7045 at Harkiston Smithy to A77 Cassillis Road, Maybole
	Kirkoswald Road Maybole	
C122	Gardenrose Path Maybole	From Fineview Place, Maybole to A77 Main Road Minishant
	Maybole - Glenalmond - Garryhorn - Minishant Road	
C110	Kirkmichael - Commonhead - Dalrymple Road	From B742 at Barnford Cottage to C11 Patna Road Kirkmichael
C11	Patna Road, Kirkmichael Kirkmichael - Patna Road	From Dalrymple Road Kirkmichael to East Ayrshire Council boundary north east of Dalvennan Meadow Bridge to U32 Junction at Dalvennan Farm.
		From South Ayrshire Council boundary north east of Dalvennan Meadow Bridge to U32 at Dalvennan Farm*
C111	Goosehill Road	From C11 at Steponds to B7045 near Black Bridge
C31	Barbrethen Road	From B7045 at Kilncroft Bridge to C88 Dalhowan Street Crosshill
	Kirkmichael Road, Crosshill	
C29	North Water of Girvan - Maybole Road	From B741 at Ruglen to C29 north east of Kilkerran
C101	Cairnhill Road	From B741 east of Burnhead to B7035 south-east of Lovestone
U39	Hawkhill Road, Old Dailly	From B741 at Old Dailly to C101 near Lovestone

\* Treated on behalf of Ayrshire Roads Alliance (East Ayrshire Council area) under cross boundary arrangements.

Grangestone Depot - Secondary Carriageway Treatment Route 2		
<b>This route will normally be gritted during daytime hours only.</b>		
Road Number	Road Name	Description
C1	Straiton - Tarlaw - Rowantree Road	From Tarlaw Bridge to Dumfries and Galloway Council boundary north east of Loch Moan
C72	Barrhill – Chirmorrie Road	From Barrhill Railway Station access road to Dumfries and Galloway Council boundary near Chirmorrie Farm
C13	Assel Road	From A714 at Pinmore to B734 at Penkill
C101	Cairnhill Road	From B7035 east of Lovestone to B741 east of Burnhead

Document	Winter Service 2014/15	Revision	2
ARA Operational Plan & Policy	Page 43 of 71	Date	21/01/2015

### **APPENDIX 3 – TERTIARY CARRIAGEWAY TREATMENT ROUTES**

Meadowhead Depot in Coylton operates seven tertiary gritting routes confined to the north and west of the council area treating urban roads and rural numbered unclassified roads.

Grangestone Depot in Girvan operates five tertiary gritting routes, confined to the south of the council area and treating urban roads and rural numbered unclassified roads.

Acting on advice received from the Ayrshire Roads Alliance weather service provider and local knowledge, tertiary gritting routes will receive treatment during daytime hours at the discretion of the Winter Service Manager when resources are available.

Dependent on prevailing weather conditions priority may be given to tertiary routes in certain areas taking account of various factors including altitude.

<b>Document</b>	<b>Winter Service 2014/15</b>	<b>Revision</b>	<b>2</b>
<b>ARA Operational Plan &amp; Policy</b>	<b>Page 44 of 71</b>	<b>Date</b>	<b>21/01/2015</b>

<b>Meadowhead Depot - Tertiary Carriageway Treatment Route 1</b>		
<b>This route will only be gritted during daytime hours on the instruction of the Winter Service Manager</b>		
<b>Road Number</b>	<b>Road Name</b>	<b>Description</b>
U115	Barbieston Road	From C21 near Cloquhairnan Cottage to Mill O'Shiel Farm
U95	Stabneoch Road	From C21 near South Craig to East Ayrshire Council boundary at Kerse Burn
U35	Glastron Road	From East Ayrshire Council boundary at Skeldon Bridge to East Ayrshire Council boundary at Dalvennan Bridge
U55	Netherton Road	From U35 near Kilmore to B742 at Barnsford Cottages
U32	Fardenwilliam Road	From U35 near Dalvennan Bridge to C110 south of Ballycoach
U61	Roaston Road	From C110 north-west of Roaston Farm to C11 south-west of Roaston Cottage
U23	Crawfordston Road	From C110 west of Guiltreehill to B7045 north of Grimmet
U111	Culzean Castle Access Road	From A719 to
U5	Balchriston Road	From A719 at Balchriston Lodge to end of public road at car park entrance
U24	Croy Road	From A719 at Knowside to end of public road at access road to Croy House
U63	Sauchrie Road	From A719 near Genoch to B7024 south of High Milton
U47	Laigh Grange Road	From B7024 north of High Grange to A77 north-east of Bankend Bridge
U14	Brae Road	From A77 east of Brae of Auchendrane to B7024 north east of Midton House
U100	Martnaham Road	From B742 near Bowmanston to East Ayrshire Council boundary east of Marnaham Mains
U93	Sandhill Road	From U100 at Martnaham Lochend Bridge to East Ayrshire Council boundary at Millmannoch Bridge
U82	Laighpark Road	From C74 near Bankhead to Garvine Road Coylton

<b>Meadowhead Depot - Tertiary Carriageway Treatment Route 2</b>		
<b>This route will only be gritted during daytime hours on the instruction of the Winter Service Manager</b>		
<b>Road Number</b>	<b>Road Name</b>	<b>Description</b>
U90	Potterhill Road	From A70 at Byres to B744 at Eastburn Cottage
U91	Pierhill Road	From B744 near Commonsides to B730 north of Stair
U92	Redcraig Road	From B742 near Temple Bogwood to
U83	Longhouse Road	From B744 near Rottenrow to A719 at Fiveways
U84	Garroch Road	From U83 near Fiveways to B744 at Carrochburn
-	Sidehead Terrace	From C53 to end of public road at cattle grid
U70	Broadyards Road	From A719 near Fairwells to C119 at Laigh Borland
U74	East Hillhouse Road	From C119 east of Laigh Borland to East Ayrshire Council boundary near Hirst
U86	Millburn Road	From A719 near Townend to B744 at Wrights Toll Cottage
U87	Mossie Road	From U86 to B730 at Fail Toll
U88	Midton Road	From B730 near Blacklands to C138 at Underhills (including loop road south of Midton Farm)
U89	Pisgah Road	From C138 at Underhills to U96 at Pisgah
U96	Wardneuk Road	From C138 near Low Wardneuk to A719 near Bourtreebush
U76	Foulton Road	From U96 near High Wardneuk to B739 near Bogside Cottage
U117	Shields Road	From A77 Sandyford Toll roundabout to the access road to Shields Farm
U79	Helenton Road	From A77 at Helentongate to Helenton Mains
U112	Spittalhill Road	From B7038 to Spittalhill Farm
U94	Stafflar Road	From East Ayrshire Council boundary north of Inchgotrick to B730 south of Parkhouse
U73	Ditton Road	From B751 at Fortacres to East Ayrshire Council boundary west of Ditton Farm
U108	Rowanhill Road	From B751 near Templeton to B730 at Crooks
U72	Crooks Road	From B730 at Crooks to U99 at Gillside
U99	Dundonald - Symington Road	From U98 Corraith Road to C32 at Dundonald
U109	Cockhill Road	From C128 Harperland to Cockhill Farm Access Road
U78	Hillhouse Road	From A759 at Laigh Hillhouse to West Lodge
U105	Collenan Road	From A759 at Collenan to Glendonan
U114	Isle of Pin Road	From Craigend Road Troon to U75 near Fairlees
U75	Lawhill Road	From U114 near Fairlees to B746 south-east of Loans
U50	St Andrews Road	From A79 north of Prestwick Airport to Prestwick Holiday Park entrance.
U81	Kerrix Road	From A78 at Monktonhead roundabout to Main Street Symington
U85	Mainholm Road	From A77 Ayr Bypass to No.18 Mainholm Holdings

<b>Document</b>	<b>Winter Service 2014/15</b>	<b>Revision</b>	<b>2</b>
<b>ARA Operational Plan &amp; Policy</b>	<b>Page 46 of 71</b>	<b>Date</b>	<b>21/01/2015</b>

Meadowhead Depot - Tertiary Carriageway Treatment Route 3			
This route will only be gritted during daytime hours on the instruction of the Winter Service Manager			
Town / Village	Road Number	Road Name	
Ayr (South)	-	Abbotts Crescent	Carwinshoch View
		Abercromby Drive	Castlehill Crescent
		Ailsa View	Celandine Bank
		Ailsa View Gardens	Chalmers Avenue
		Ailsa View Place	Cherryhill Road
		Ailsa View Wynd	Clarke Avenue
		Airlie Court	Clochranhill Road
		Alloway Park	Coranbrae Place
		Altry Place	Cornhill
		Anderson Crescent	Corton Lea
		Arnprior Place	Corton Shaw
		Arrol Drive	Corton Howe
		Auchenbeg Crescent	Craig Drive
		Auchendoon Crescent	Craighall Place
		Auchentrae Crescent	Craigshiel Place
		Barnford Crescent	Craigwell Road
		Balminnoch Park	Craigwell Place
		Beagrie Crescent	Cranesbill Court
		Bellevale Quadrant	Culzean Road
		Bellevale Avenue	Curtican Place
		Belmont Crescent	Dalton Park
		Belmont Place East	Doonbank Park
		Belmont Place West	Doonholm Park
		Bellevue Lane	Doonholm Road (cul-de-sac between No.45 and No.47)
		Bellevue Street	Doonvale Drive
		Bellevue Crescent	Doonvale Place
		Bentfield Avenue	Doonview Wynd
		Beresford Lane	Doonview Gardens
		Blackburn Place	Dornoch Park
		Bourtrees Park	Drumellan Road,
		Bowman Road	Dumfries Park
		Bracken Park	Ewenfield Gardens
		Broomfield Road	Ewenfield Place
		Broun Drive	Ewenfield Park
		Burness Avenue	Fairfield Park
		Burnbank Place	Fairfield Road
		Cairnsmore Drive	Fenwickland Place
		Campion Court	Fern Brae
		Carrick Avenue	Finnick Glen
		Carrick Road Lane	Foxglove Place
		Castle Walk	Gearholm Road
		Castle Square	George Place
		Carseloch Road	Glendale Place

Document	Winter Service 2014/15	Revision	2
ARA Operational Plan & Policy	Page 47 of 71	Date	21/01/2015

Meadowhead Depot - Tertiary Carriageway Treatment Route 3 (continued)			
This route will only be gritted during daytime hours on the instruction of the Winter Service Manager			
Town / Village	Road Number	Road Name	
Ayr (South)	-	Glenmount Place	Pemberton Valley
		Greenan Place	Piperhill
		Greenan Road	Portmark Avenue
		Gorse Park	Primrose Park
		Gowanbank Road	Raith Hill
		Gowkscroft Park	Ringwoodie Place
		Guiltree Hill	Robslan Avenue
		Harebell Place	Rockrose Park
		Heather Park	Roseberry Park
		Highfield Road	Rush Hill
		Home Farm Road	Seafield Drive
		Honeysuckle Park	Seafield Crescent
		Iris Court	Sea Tower Gardens
		Kilbrandon Crescent	Shanter Place
		Kilbrandon Way	Shanter Way
		Knoll Park	Shanter Wynd
		Knoweholm	Shawfield Avenue
		Laigh Mount	Sorrel Drive
		Leeward Park	Speedwell Square
		Lindston Place	Springvale Road
		Loch Place	Springvale Park
		Longhill Place	Stewart Lea
		Longlands Park	Stonecrop Place
		Marchmont Road	Stonefield Park
		Marchmont Road Lane	Strathdoon Place
		Marguerite Place	St Vincent Crescent
		Marigold Square	Sunningdale Avenue
		Marlepark	The Loaning
		Meadow Park	The Mote
		Midton Road	Thistle Walk
		Monkwood Place	Trefoil Place
		Northdoon Place	Upper Crofts
		Nursery Grove	Upper Loaning
		Nursery Wynd	Victoria Park
		Parkview	Wellington Lane
		Park Circus Lane	Wellpark
		Park Terrace	Wood Park
		Pattle Place	Woodlands Crescent
		Peggieshill Place	Windward Park



Meadowhead Depot - Tertiary Carriageway Treatment Route 4			
This route will only be gritted during daytime hours on the instruction of the Winter Service Manager			
Town / Village	Road Number	Road Name	
Ayr (Town Centre & North)	-	Academy Street	Cloverhill
		Afton Place	Content Avenue
		Ailsa Place	Cowan Crescent
		Alder Bank	Craigie Lea
		Alderston Park	Craigston Avenue
		Alderston Place	Cromwell Road
		Alexandra Terrace	Cross Street
		Allan Place	Crown Street
		Allenfield Road	Dalblair Way
		Argyle Park	Dalmilling Crescent
		Arran Terrace	Damside
		Arthur Street	Davidson Place
		Ashgrove Street (from Lothian Road to Dongola Road)	Dongola Road
		Aspen Road	Eglinton Place
		Aspen Court	Eglinton Terrace
		Barns Crescent	Ellisland Square
		Barns Street Lane	Ellisland Place
		Bellrock Road	Fellhill Street
		Belvidere Terrace	Fir Bank
		Birch Road	Forest Way
		Blackfriars Court	Glenconner Road
		Blackhill Street	Glenconner Place
		Blackhouse Place	Glenford Place
		Boat Vennal	Glenriddel Road
		Boundary Road (from Heathfield Road to Forbes Drive)	Greentree Park
		Braehead Crescent	Hawthorn Drive
		Braeside Road	Hillfoot Crescent
		Braemar Square	Hilltop Place
		Britannia Place	Holly Bank
		Bruce Crescent	Holmston Road (Service Road)
		Burnett Terrace	Ivy Place
		Cathcart Street	Juniper Green
		Callendar Place	Laburnum Road
		Campbell Street	Lairghill Lane
		Camphill Place	Laurel Bank
		Cedar Road	Maple Drive
		Cessnock Place	Masonhill Place
		Charlotte Street	Mill Brae
		Charlotte Street Lane	Montgomerie Terrace
		Chestnut Road	Mossgiel Road
		Church Court	Mount Oliphant Place
		Citadel Place	Old Hillfoot Road
		Clarendon Place	Orchard Avenue

Document	Winter Service 2014/15	Revision	2
ARA Operational Plan & Policy	Page 49 of 71	Date	21/01/2015

Meadowhead Depot - Tertiary Carriageway Treatment Route 4 (continued)			
<b>This route will only be gritted during daytime hours on the instruction of the Winter Service Manager</b>			
Town / Village	Road Number	Road Name	
Ayr (Town Centre & North)	-	Orchard Avenue Place	Stobhill Crescent
		Poplar Way	Strathayr Place
		Seabank Road	Sycamore Crescent
		Souter Place	Treebank Crescent
		Spruce Park	Willow Park

Document	Winter Service 2014/15	Revision	2
ARA Operational Plan & Policy	Page 50 of 71	Date	21/01/2015

Meadowhead Depot - Tertiary Carriageway Treatment Route 5			
This route will only be gritted during daytime hours on the instruction of the Winter Service Manager			
Town / Village	Road Number	Road Name	
Prestwick	-	Abbot Court	Carnell Crescent
		Adamton Terrace	Carnell Terrace
		Ailsa Street	Carradale Drive
		Aitkenbrae Drive	Carrick Place
		Allanvale Road	Clune Drive
		Alvord Avenue	Cochrane Place
		Anderson Crescent	Coila Avenue
		Angus Avenue	Coulthard Drive
		Annfield Road	Coylebank
		Annfield Road	Craigfin Court
		Ardayre Road	Craigie Street
		Ardfin Court	Craigneil Drive
		Ardfin Road	Craigpark Avenue
		Bank Street	Craigskeen Place
		Barnweil Avenue	Crawford Avenue
		Barony Road	Crosbie Terrace
		Bellevue Crescent	Culzean Avenue
		Bellevue Road	Cunningham Road
		Bellfield Lane	Dalwood Road
		Benmore	Douglas Avenue
		Bennoch Place	Duart Avenue
		Bentfield Drive	Duart Crescent
		Berelands Avenue	Dundonald Terrace
		Blackford Crescent	Edmiston Avenue
		Blanefield Avenue	Edmiston Lane
		Boundary Road (from Forbes Drive to Callander Road)	Fairway View
		Boyd Street	Farden Place
		Boydfield Avenue	Farm Road
		Brandon Gardens	Fearnoch
		Briarhill Court	Ferguson Avenue
		Briarhill Street	Fernbank
		Bridge Street	Fiddison Place
		Broompark Avenue	Forbes Drive
		Broompark Crescent	Fullarton Road
		Bruce Avenue	Fulshaw Court
		Bruce Lane	Gardiner Street
		Burgh Road	Garryhorn
		Burnside Gardens	Glenpark Avenue
		Caerlaverock Avenue	Grangemuir Court
		Calvinston Road	Gray Street
		Cangillan Court	Greenside Avenue
		Capper View	Greenan Terrace
		Carleton Gardens	Gullin Drive

Document	Winter Service 2014/15	Revision	2
ARA Operational Plan & Policy	Page 51 of 71	Date	21/01/2015

Meadowhead Depot - Tertiary Carriageway Treatment Route 5 (continued)			
This route will only be gritted during daytime hours on the instruction of the Winter Service Manager			
Town / Village	Road Number	Road Name	
Prestwick	-	Hamilton Way	Moorfield Road
		Hawthorn Avenue	Morris Road
		Hawthorn Gardens	Mossbank
		Highfield Avenue	Neward Crescent
		Highfield Avenue Lane	Newark Terrace
		Hillside Crescent	Nisbet Drive
		Hunter Street	Orangefield Drive
		James Street	Oswald Drive
		Kenmore Avenue	Outdale Avenue
		Kingscroft Road	Overdale Crescent
		Kirk Street	Park Avenue
		Kirklandholm	Pladda Drive
		Kyle Street	Pleasantfield Road
		Ladykirk Road	Powmill Gardens
		Langcroft Avenue	Powmill Road
		Laighland	Queens Terrace
		Latta Court	Raith Avenue
		Lennox Drive	Raith Terrace
		Leslie Terrace	Renwick Way
		Lichtenfels Gardens	Rosemount Gardens
		Lilybank Road	Rowallan Crescent
		Links Road	Rowanbank Road
		Loudon Terrace	Ryelands
		Lugar Crescent	St Cuthbert's Crescent
		Macintyre Road	St Cuthbert's Road
		Macrae Drive	St John Street
		Mansewell Road	St Nicholas Road
		Mansfield Road	St Ninian's Lane
		Manson Avenue	St Ninians Place
		Marina Road	St Ninians Road
		Maryborough Avenue	Salisbury Place
		Maryborough Road	Sauterne Road
		McAdam Court	Seabank Road
		McNeil Avenue	Seagate
		Meiklewood Avenue	Shaw Road (part),
		Merrick Avenue	Shawfarm Court
		Midton Avenue	Shawfarm Place
		Mochrum Court	Shilliw Drive
		Monkton Court	Shilliw Place
		Montgomerie Road	Skye Road
		Moor Park	Southpark Avenue
		Moor Park Crescent	Springfield Avenue
		Moor Park Place	Strang Place

Meadowhead Depot - Tertiary Carriageway Treatment Route 5 (continued)			
This route will only be gritted during daytime hours on the instruction of the Winter Service Manager			
Town / Village	Road Number	Road Name	
Prestwick	-	Templerigg Court	Westbourne Gardens
		Templerigg Street	Weston Place
		Templeton Crescent	Whinfield Avenue
		The Riggs	Whinfield Gardens
		Towans Court	Whinfield Road
		Underwood Road	Whitehall Avenue
		Tramore Crescent	Whiteside
		Wallace Court	Whiteside Road
		Wardneuk	Whiteside Terrace
		Weir Avenue	Winston Avenue
		Wellington Street	Woodlands Street
		Westbourne Avenue	Wood Park
Monkton	-	Baird Place	Queens Drive
		Burnside Road	Whiteside Drive
		Coronation Street	Whiteside Gardens (from Whiteside Drive to No.5)
		Firhill Drive	Whiteside Park

Meadowhead Depot - Tertiary Carriageway Treatment Route 6			
This route will only be gritted during daytime hours on the instruction of the Winter Service Manager			
Town / Village	Road Number	Road Name	
Troon	-	Academy Street	Elm Gardens
		Adams Court	Esk Road
		Afton Gardens	Fairhaven
		Ailsa Road	Findhorn Place
		Annick Place	Firth Gardens
		Arran Gardens	Garden Place
		Arran Road	Golf Crescent
		Bank Street	Golf Place
		Bargrennan Road	Henderson Road
		Berriedale Road	Hillocks Place
		Birch Way	Jura Place
		Bradán Court	Kenmore Place
		Bradán Road	Kennedy Road
		Burnfoot Way	Kilkerran Drive
		Cairnfore Avenue	Killin Place
		Cavendish Court	Kilmory Place
		Cavendish Place	Leven Road
		Cessnock Road	Lochay Place
		Charles Drive	Lochend Place
		Cherry Lane	Lochend Road
		Citadel Way	Maberry Place
		Clyde Place	Mennoch Lane
		College Park	Monklands
		Corrie Place	Morven Crescent
		Craigend Road (part)	Morven Drive
		Craig Road	Ness Place
		Craigsdow Road	Nevan Road
		Creesbank Place	Noran Crescent
		Crosbie Road	North Neuk
		Dallas Court	North Shore Road (Service Road)
		Dallas Place	Old Station Brae
		Dallas Road	Old Station Wynd
		Darley Crescent	Pearce Avenue
		Darley Place	Plateau Drive
		Dinmurchie Road	Polo Avenue
		Doon Place	Polo Gardens
		Drumlanford Road	Portland Terrace
		Dukes Road	Reedloch Drive
		Dunchattan Grove	Richard Place
		Dunchattan Way	Rosemount Drive
		Earn Road	Roughlea Place
		East Grove	Rowan Place
		Eglinton Drive	Ruthven Place

Document	Winter Service 2014/15	Revision	2
ARA Operational Plan & Policy	Page 54 of 71	Date	21/01/2015

Meadowhead Depot - Tertiary Carriageway Treatment Route 6 (continued)			
This route will only be gritted during daytime hours on the instruction of the Winter Service Manager			
Town / Village	Road Number	Road Name	
Troon	-	Sandhill Gardens	Teviot Place
		Sarazen Drive	The Knowe
		Scott Place	Titchfield Road
		Shore Road	Union Street
		Solway Place	Wallace Avenue
		South Drive	Welbeck Crescent
		Southward Way	West Grove
		St Clair Terrace	West Portland Street
		St Meddan's Crescent	Willockston Road
		Steeple View	Wood Court
		Struthers Place	Wood Road
		Tay Road	Young Avenue
Loans	-	Beechwood	Crummieholm Gardens
		Collenan Avenue	Seaview Terrace
		Crossburn Drive	Stable Wynd
		Crossburn Terrace	Wardlaw Crescent

<b>Meadowhead Depot - Tertiary Carriageway Treatment Route 7</b>			
<b>This route will only be gritted during daytime hours on the instruction of the Winter Service Manager</b>			
<b>Town / Village</b>	<b>Road Number</b>	<b>Road Name</b>	
Annbank	-	Brown's Crescent (cul-de-sac)	Dunlop Avenue
		Craighall Place	Mill Road
		Craighall Way	Whitehill Drive
Coylton	-	Arthurston Terrace	Glenhead Place
		Ashgrove	Hamilton Place
		Barngore Drive	Kyle Crescent
		Bryden Place	Laighpark Court
		Burgoyne Drive	Laighpark View
		Carnell Drive	Lochfergus Crescent
		Carrick View	Lochfergus Drive
		Chestnut Grove	Lochfergus Place
		Coats Place	Lorne Terrace
		Craigview	Manse Road
		Dalblair Crescent	Martnaham Drive
		Dalrymple View	Meadow Park
		Douglas Brown Place	Milton Park
		Douglas Road	Parklands
		Drumsuy Court	Potterhill Place
		Duchray Place	Ramseyston Avenue
		Fergus Way	Springs Park
		Finlayson Place	Sundrum Park
		Finlayson Way	The Beeches
		Gadgirth Court	Thorn Avenue
		Gallowhill Quadrant	Whitehill Way
Dundonald	-	Auchans Avenue	Laurieston Court
		Auchans Drive	Lochside Court
		Beaton Lane	Merkland Park
		Bruce Avenue	Merkland Place
		Castleview	Parkthorn View
		Coats Place	Richmond Terrace
		Cochrane Drive	School Wynd
		Earl Crescent	Vernon Place
		Earl Mount	Wallace Avenue
		Fullarton Avenue (part)	Warly Place
		Gulliland Avenue	Wilson Place
Fiveways	-	Sidehead Terrace	
Mossblown	-	Barwheys Drive	Johnstone Drive
		Brocklehill Drive	Martin Avenue
		Drumley Avenue (part)	McEwan Crescent
		Gilchrist Place,	Miller Place
		Hillpark	Mossbank Place
		Murray Terrace	Sloan Avenue
		Osbourne Avenue	Southside Avenue
		Raggithill Avenue	Whiskeyhall.

<b>Document</b>	<b>Winter Service 2014/15</b>	<b>Revision</b>	<b>2</b>
<b>ARA Operational Plan &amp; Policy</b>	<b>Page 56 of 71</b>	<b>Date</b>	<b>21/01/2015</b>



Meadowhead Depot - Tertiary Carriageway Treatment Route 7 (continued)			
<b>This route will only be gritted during daytime hours on the instruction of the Winter Service Manager</b>			
Town / Village	Road Number	Road Name	
St Quivox	-	Kevoc Cottages	
Symington	-	Dankeith Drive	Townend Brae
		Dankeith Road	Townend Drive
		Flatfield	Townend Place
		Lomond View	Townend Terrace
		Loudon Place	Townend Road
		Merrick Place	Whitelees Service Road
		The Glebe	
Tarbolton	-	Alton Avenue	Margaret Sloan Place
		Beechwood Road	Park Road
		Craigie View	Smithfield Crescent (part)

<b>Grangestone Depot - Tertiary Carriageway Treatment Route 1</b>		
<b>This route will only be gritted during daytime hours on the instruction of the Winter Service Manager</b>		
<b>Road Number</b>	<b>Road Name</b>	<b>Description</b>
U25	Delamford Road	From B741 near Moorston to U66 near Milton Bridge
U11	Benan Road	From B734 near Cairnwhin to bridge over River Stinchar
U57	Nick of the Balloch	From U66 at South Balloch to C1 at Rowantree Old Toll
U8	Ballochbeattie Road	From C1 at Stinchar Bridge to end of public road
U42	Knockdoon Road	From C1 at Tarlaw Bridge to Knockdon Bridge
U4	Balbeg Road	From C1 near Craig to Palmullan Bridge
U104	Holehouse Road	From B741 at Holehouse Bridge to Glenhead
U31	Dyke Road	From B741 west of Straiton to U43 west of Dyke
U68	Threethorns Road	From U31 west of Dyke to B741 near Threethorns
U43	Knockgardner Road	From U31 west of Dyke to U27 near Kirkbride Farm
U27	Deil's Elbow Road	From B741 at Cloyntie to U66 at South Balloch
U12	Blair Road	From U27 near Culloch Knowes to Blair Farm
U45	Ladyburn Road	From U27 at Auchalton Toll to B741 near Ruglen
U16	Burnton Road	From U45 at Ladyburn Bridge to B741 near Rowanston
U60	Poundland Road	From B741 near Woodend to Poundland

<b>Grangestone Depot - Tertiary Carriageway Treatment Route 2</b>		
<b>This route will only be gritted during daytime hours on the instruction of the Winter Service Manager</b>		
<b>Road Number</b>	<b>Road Name</b>	<b>Description</b>
U64	Shalloch Mill Road	From A77 at Shalloch Mill to A714 near Daltippan
U48	Lendal Road	From A714 near Pinmore to A77 at Lendalfoot
U17	Carlton Road	From A77 at Lendalfoot to B734 at Garnaburn
U52	Muck Road	From Pinwherry Community Centre to Mark Farm road end.
U103	Drumskeoch Road	From A714 at Sixpence to Drumskeoch Farm access road.
U102	Black Clauchrie Road	From A714 at Blair to Darnaconnar
U28	Dornal Road	From B7027 at Maberry Cottage to Dumfries and Galloway Council boundary
U26	Dalreoch Road	From C45 near Colmonell to Dalreoch Farm
U9	Bardrochat Road	From U26 near Colmonell Bridge to Reuchat Farm access road
U59	Polcardoch Road	From C45 at Polcardoch to Kirkholm
U51	Mains of Tig	From C45 near Heronsford to Mains of Tig Farm
U6	Balkissock Road	From C45 near Hillview Cottage to Balkissock Farm
U22	Crailoch Road	From U6 at Wayside Cottage to Crailoch
U1	Auchairnie Road	From A77 near Garleffin to Kilwhannel Farm access road
U36	Glendrisaig Road	From A77 near Kilantringan Wood to Glendrisaig Farm access road
U10	Big Park Road	From A77 at Water Works to U36 at Kilantringan Cottage
U29	Downan Road	From U10 near Garleffin to Downanhill
U113	Bennane Road	From A77 near Bennane Bridge to end of public road at Bennane House

<b>Document</b>	<b>Winter Service 2014/15</b>	<b>Revision</b>	<b>2</b>
<b>ARA Operational Plan &amp; Policy</b>	<b>Page 58 of 71</b>	<b>Date</b>	<b>21/01/2015</b>

<b>Grangestone Depot - Tertiary Carriageway Treatment Route 3</b>		
<b>This route will only be gritted during daytime hours on the instruction of the Winter Service Manager</b>		
<b>Road Number</b>	<b>Road Name</b>	<b>Description</b>
U46	Ladywell Road	From B741 at McCrindleston Toll to access road leading to Stevenson Hall.
U30	Dunnymuck Road	From A77 at Dunnymuck to Ladybank Farm
U49	Littleton Glen Road	From A77 at Dowhill to C44 near Cairnhill
U54	McGowanston Road	From U49 at Townhead to C44 near North Threave
U19	Chapelton Road	From C44 near Laigh Chapelton to U38 at Hallowshean
U44	Knoxhill Road	From U38 at Hallowshean to A77 at Croftengee Bridge
U40	High Park Road	From U44 near Croftengee Bridge to U44 at Townhead
U53	Mullocks Road	From C44 near North Threave to U62 Roughneuk Road near High Newlands
U62	Roughneuk Road	From C29 at Wallaceton to U38 at Hallowshean
U69	Wellholm Road	From U38 at Hallowshean to A77 near Crossraguel
U2	Auchencross Road	From C29 near Auchenwinn Bridge to U15 at Springgarden Bridge
U15	Burncrooks Road	From U2 at Springgarden Bridge to Craigdow Farm access road
U3	Bairdsmill Road	From C29 at Barmody to B7023 near Garpin
U34	Garphar Road	From B741 near Longhill Farm to C88 near Dalhowan
U67	Tranew Road	From B741 near Girvan Lodge to C31 at Waulk Mill Bridge
U58	Parkfairn Road	From C31 at Threave Cottage to B741 near Drumquhill
U21	Craighead Road	From C44 at Drummuck to B741 at Craighead

Grangestone Depot - Tertiary Carriageway Treatment Route 4			
<b>This route will only be gritted during daytime hours on the instruction of the Winter Service Manager</b>			
Town / Village	Road Number	Road Name	
Ballantrae	-	Ailsa Drive	Foreland (from Shore Road northwards to No.1 and cul-de-sac between No.46 and No.53)
		Arran Avenue	Kintyre Avenue
		Downan Avenue	Onslow Place
Barr	-	The Avenue	The Clachan
Barrhill	-	Balluskie Road	Wallace Terrace
Colmonell	-	Haddows Row	Kirkhill Crescent
		Hyslop Crescent	
Dailly	-	Back Road	Hadyard Terrace
		Brunston Avenue	Hazelwood Avenue
		Brunston Wynd	Sturgeons Brae
		Church Crescent	The Loaning
		Eldinton Terrace	Victory Crescent
		Golf Course Road	West End
		Greenhead Street	Wood Street
Girvan	-	Ailsa Place	Duff Street
		Ailsa Street East	Duncan Street
		Ailsa Street West	Eastburn Drive
		Ainslie Road	Edmiston Drive
		Ardmillan Road	Elder Avenue
		Arran Court	Fauldribbon Road
		Assel Place	Firth Terrace
		Ballochtoul	George Street
		Ballybroke Street	Greenside
		Bay Terrace	Gregg Place
		Beech Way	Harbour Lane
		Bennane Road	Harbour Street
		Birch Terrace	Hawthorn Drive
		Bourtrees Hall	Hervey Road
		Boyle Court	High Street
		Carrick Street	Inglis Way
		Cauldshore	Kerr Court
		Cherry Drive	Killochan Street
		Chestnut Drive	Kirkwood Place
		Clyde View	Knockcushan Street (Non Trunk Road Section)
		Connor Court	Lendal Quadrant
		Craig Court	Linden Avenue
		Cuddieston	Louisa Drive
		Deacons Place	Maple Drive
		Doune Street	Maxwell Street
		Douneburn Crescent	McCulloch Road
		Dowhill Road	McMaster Terrace

Document	Winter Service 2014/15	Revision	2
ARA Operational Plan & Policy	Page 60 of 71	Date	21/01/2015

Grangestone Depot - Tertiary Carriageway Treatment Route 4 (continued)			
<b>This route will only be gritted during daytime hours on the instruction of the Winter Service Manager</b>			
Town / Village	Road Number	Road Name	
Girvan	-	Miller Road	Saughhill Road
		Motehill Crescent	Shalloch Square
		North Drive	Snow Street
		North Park Avenue	Sycamore Drive
		Orchard Avenue	Todd Street
		Park Circus	Torcy Drive
		Park Road	Torcy Way
		Penkill Road	Troweir Road
		Piedmont Square	Urnfield
		Pine Quadrant	Wesley Place
		, Queens Drive	Wesley Road
		Rajput Drive	Wheatfield Road
		Rodney Drive	Whiteford
		Roodlands Road	Willow Drive
		Rowan Road	Wilson Street
		Roxburgh Road	Young Street
Pinmore	-	Dinvin Road	

<b>Grangestone Depot - Tertiary Carriageway Treatment Route 5</b>			
<b>This route will only be gritted during daytime hours on the instruction of the Winter Service Manager</b>			
<b>Town / Village</b>	<b>Road Number</b>	<b>Road Name</b>	
Crosshill	-	Newton Street	
Dunure	-	Arran View	Harbour View
		Carrick Place	Kennedy Drive
Kirkmichael	-	Banganock Road	Portcheek Terrace
		Bolestyle Crescent	Woodside Avenue
		Dyrock Road	
Kirkoswald	-	Cairnhill Place	Merkland Terrace
		Merkland Place	
Maidens	-	Ardlochan Road	Harbour Road
		Ardlochan Terrace	Seabank View
		Baineshill Road	
Maybole	-	Academy Quadrant	Kincraig Crescent
		Allans Hill	Kirkwynd
		Ashgrove Lane	Ladycross Place
		Burns Wynd	Ladywell Terrace
		Cairnfield Avenue	Laurel Bank Road
		Cairnhill Court	Macadam Place
		Castle Street	Manse Street
		Chesney Grove	McCrae Court
		Coral Hill	Miller Street
		Craigie Avenue	Roderick Lawson Terrace
		Crossraguel View	St Cuthberts Street
		Drummellan Street	School Vennel
		Dunlop Terrace	Seaton Street
		Elms Way	Society Street
		Enoch Road	Swan Court
		Fineview Place	The Croft
		Glebe Crescent	Vicarland
		Glenalla Road	Wellington Street
		Hicks Avenue	Welltrees Square
		Hutchison Street	Whitefaulds Quadrant
		Inches Close	Whitehall Court
Minishant	-	Merrick Crescent (part)	St Helen's Crescent
		Nursery Square	The Beeches
Straiton	-	Knockbreck Road	
Turnberry	-	Milton Wynd	

## APPENDIX 4 – FOOTWAY AND FOOTPATH TREATMENT ROUTES

Meadowhead Depot - Ayr Town Centre Footways Treatment Route 1			
Town	Road Number	Road Name	
Ayr	A70	Station Bridge Road	Burns Statue Square
		Parkhouse Street	Miller Road
		Killoch Place	
	A79	Beresford Terrace (Parkhouse Street to Miller Road)	Station Road
	A719	Fort Street	South Harbour Street (Fort Street to New Bridge Street only)
		New Bridge Street	Wellington Square
		Sandgate	
	-	Alloway Street	Hope Street
		Arthur Street	Kyle Street
		Boswell Park	Newmarket Street
		Carrick Street	Old Bridge
		Dalblair Road	Old Bridge Street
		Dalblair Way	River Ayr Walk (between Old Bridge and Turners Bridge)
		Douglas Street	River Terrace
		Fullarton Street	Smith Street
		High Street	

Meadowhead Depot - Ayr and Prestwick Footways Treatment Route 2			
<b>This route will only receive treatment during the daytime hours if heavy snowfall or extensive icing is forecast and resources are available.</b>			
Town	Road Number	Road Name	
Ayr	A79	Allison Street	John Street
		King Street	New Road
		Prestwick Road	Tam's Brig
	A719	Main Street	
	-	Bath Place	Charlotte Street
Prestwick	A79	Ayr Road	Main Street
		The Cross	

Document	Winter Service 2014/15	Revision	2
ARA Operational Plan & Policy	Page 63 of 71	Date	21/01/2015

<b>Meadowhead Depot - Troon, Loans and Monkton Footway Treatment Route 3</b>			
<b>This route will only receive treatment during the daytime hours if heavy snowfall or extensive icing is forecast and resources are available.</b>			
<b>Town</b>	<b>Road Number</b>	<b>Road Name</b>	
Troon	A759	Dundonald Road (North footway from Portland Street to Central Avenue)	Portland Street
	B746	Beach Road (East footway from North Shore Road to Kilmarnock Road)	North Shore Road (East footway from Barassie Street to Beach Road)
		Kilmarnock Road (South footway from Beach Road to Deveron Road)	
	B749	Ayr Street	Harbour Road (South footway from Templehill to Harbour Entrance)
	-	Academy Street	Church Street
		Barassie Street	Deveron Road (East footway from Kilmarnock Road to North Drive)
		Bentick Drive (from St Meddans Street to Yorke Road only)	North Drive (North footway from Deveron Road to Central Avenue)
		Burnside Place	St Meddans Street
		Central Avenue (East footway from North Drive to Dundonald Road)	Templehill (South from The Cross to Harbour Road)
Loans	A759	Main Street (West footway from Troon Road to Seaview Terrace)	Troon Road (North footway from Central Avenue to Main Street)
Monkton	-	Burnside Road (East footway only)	Kilmarnock Road (From Main Street to bus shelters)
		Tarbolton Road (North footway from Baird Road to Burnside Road)	

<b>Grangestone Depot - Maybole Footway Treatment Route 4</b>			
<b>This route will only receive treatment during the daytime hours if heavy snowfall or extensive icing is forecast and resources are available.</b>			
<b>Town</b>	<b>Road Number</b>	<b>Road Name</b>	
Maybole	B7023	Crosshill Road (from Drumellan Street to St Cuthberts Road)	St Cuthberts Road
		Culzean Road (from High Street to Gallowhill Avenue)	
	B7024	Barns Road	Barns Terrace
	-	Cargill Road (North footway from Culzean Road to Cargill Avenue)	Kirkland Street
		Castle Street	Ladyland Road
		Gardenrose Path	Redbrae
		John Knox Street	Welltrees Street

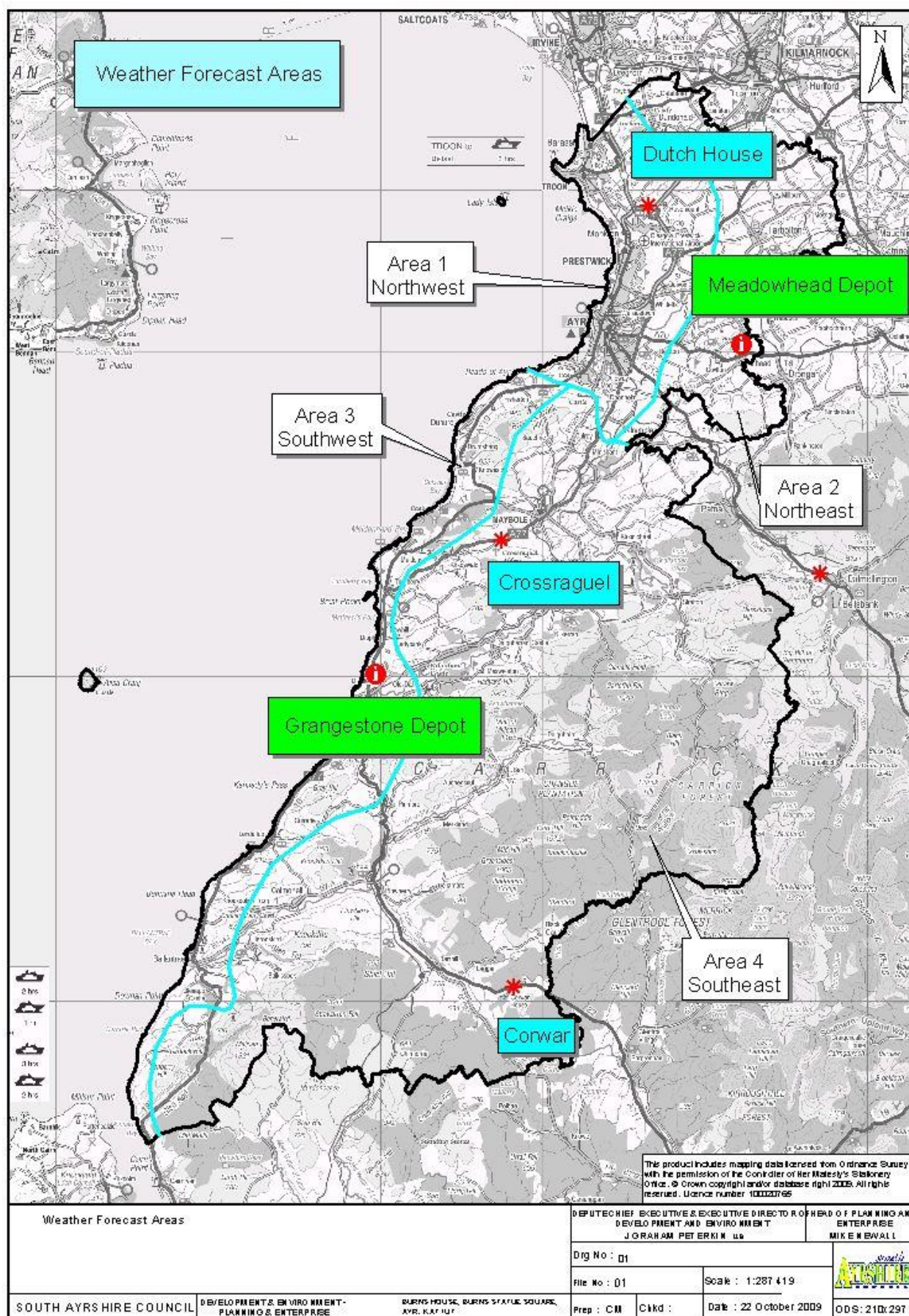
<b>Document</b>	<b>Winter Service 2014/15</b>	<b>Revision</b>	<b>2</b>
<b>ARA Operational Plan &amp; Policy</b>	<b>Page 64 of 71</b>	<b>Date</b>	<b>21/01/2015</b>



Grangestone Depot - Girvan Footway Treatment Route 5			
This route will only receive treatment during the daytime hours if heavy snowfall or extensive icing is forecast and resources are available.			
Town	Road Number	Road Name	
Girvan	B7022	Church Square	Montgomerie Street
		Hamilton Street	
	-	Alisa Street East	Park Road
		Ailsa Street West	South Park Avenue
		Duff Street	The Avenue
		Duncan Street	Victory Park Road
		Greenside	Wesley Road
		Harbour Street	Wilson Street
		North Park Avenue	Wreck Road

Document	Winter Service 2014/15	Revision	2
ARA Operational Plan & Policy	Page 65 of 71	Date	21/01/2015

## APPENDIX 5 – CLIMATIC DOMANIN AREAS, SENSOR SITES AND DEPOT LOCATIONS



Document	Winter Service 2014/15	Revision	2
ARA Operational Plan & Policy	Page 66 of 71	Date	21/01/2015

## APPENDIX 6 – SALT BINS

Details of salt bin locations in the South Ayrshire Council area can be found on the [Ayrshire Roads Alliance](#) website and the [South Ayrshire Council](#) website.

The salt bin request application form can be found on the [Ayrshire Roads Alliance](#) website and the [South Ayrshire Council](#) website.

## APPENDIX 7 – PERSONNEL AVAILABLE FOR WINTER MAINTENANCE IN THE SOUTH AYRSHIRE COUNCIL AREA

### Meadowhead Depot

**Drivers** - 23 no. are available

**Loaders** - 23 no. are available

### Girvan Depot

**Drivers** - 10 no. are available

**Loaders** - 10 no. are available

### Burns House

**Team Leaders** - 2 no. is available

**Supervisory Engineers** - 2 no. are available

**Road Operations Officer** - 1 no is available

**Depot Supervisors** - 1 no. is available

**Engineering Officers** - 1 no. is available

Document	Winter Service 2014/15	Revision	2
ARA Operational Plan & Policy	Page 67 of 71	Date	21/01/2015

## APPENDIX 8 – SPECIALIST PLANT AVAILABLE FOR WINTER MAINTENANCE

### Meadowhead Depot

Salting Route	Vehicle Type	Registration No.	Capacity Cu.m.	Licence requirements	Garaging Depot	GVW (Tonnes)
M1	Permanently Mounted Gritter	BX54 EBK	9	C	Meadowhead	26t
M2	Unibody	SB63 EWU	6	C	Meadowhead	18t
M3	Permanently Mounted Gritter	BX54 PVV	9	C	Meadowhead	26t
M4	Unibody	SB63 EWV	6	C	Meadowhead	18t
M5	Unibody	SF09 JNO	6	C	Meadowhead	18t
M6	Multispread	SD09 FXR	1.5	C1E	Meadowhead	7.5t
M7	Demountable Gritter	SB63 EWT	6	C	Meadowhead	18t
Ayr Town Centre Footways	Tractor Gritter	SF61 HZG	0.25	B	Meadowhead	1t
Spare	Demountable Gritter	SJ62 XVM	6	C	Meadowhead	18t
Spare	Permanently Mounted Gritter	BX54 PXZ	9	C	Meadowhead	26t
Spare	Unibody	SF09 JMU	4	C	Meadowhead	12t
Spare	Tractor Gritter	SF61 HZI	0.25	B1	Meadowhead	1t
	Loading shovel			In house certification		

### Grangestone Depot

Salting Route	Vehicle Type	Registration No.	Capacity Cu.m.	Licence requirements	Garaging Depot	GVW (Tonnes)
G1	Unibody	SF09 JMV	6	C	Grangestone	18t
G2	Permanently Mounted Gritter	BX54 PYA	9	C	Grangestone	26t
G3	Demountable Gritter	SB63 EWS	6	C	Grangestone	18t
Spare	Demountable Gritter	SJ62 XVL	6	C	Grangestone	
Spare	Multispread	SD09 FXS	1.5	C	Grangestone	7.5t
Spare	Tractor Gritter	SF61 HZH	0.25	B	Grangestone	1t
	Loading shovel			In house certification		

## **APPENDIX 9 - NON-SPECIALIST PLANT**

Available from within South Ayrshire Council Departments

- Approximately 12 No 3.5t / 5t pick-ups.
- Approximately. 8 No Tractors and trailers.
- Approximately 50 personnel available from Neighbourhood Services.

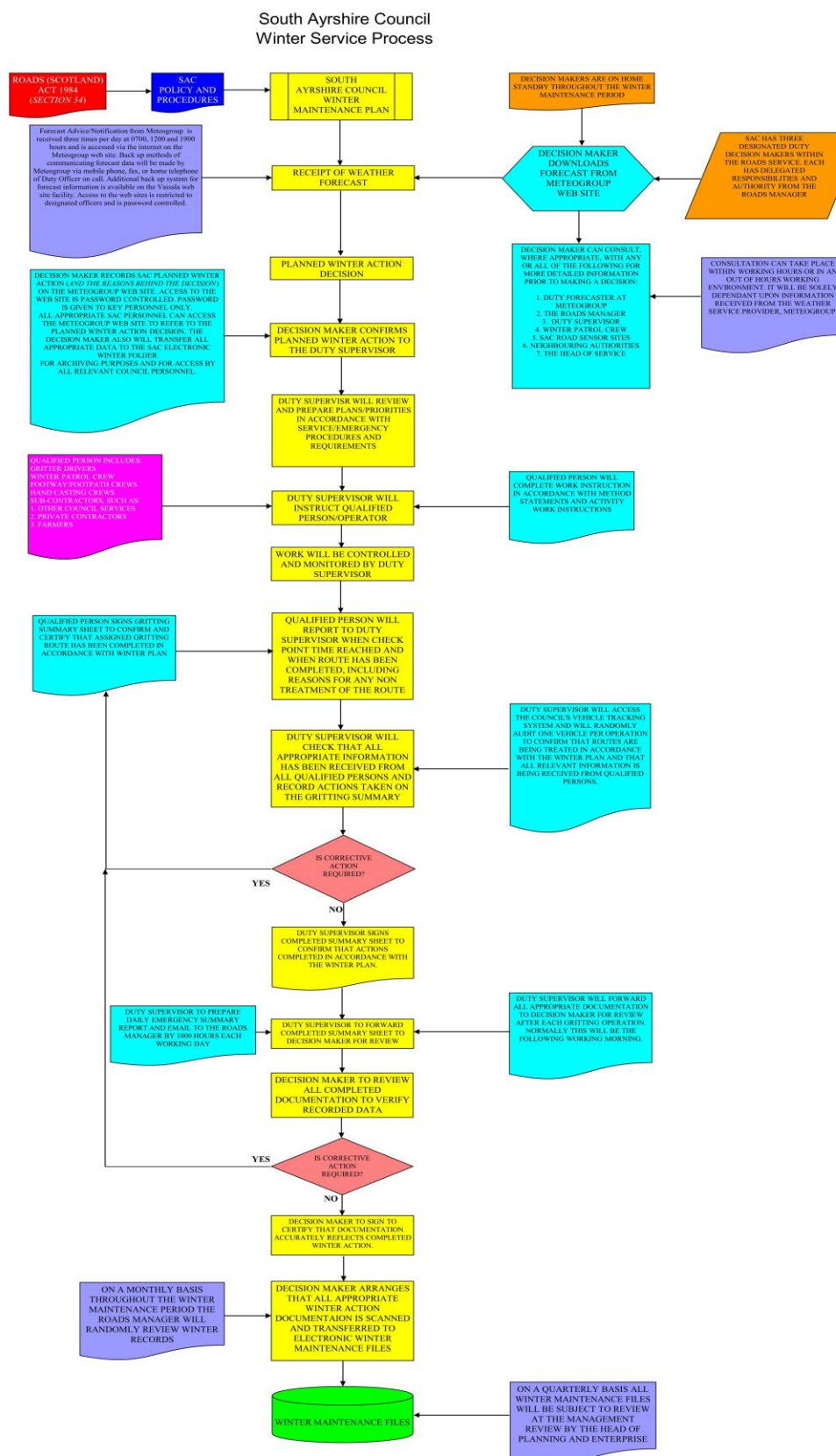
## **APPENDIX 10 – PLANT AVAILABLE FROM EXTERNAL CONTRACTORS**

In accordance with procurement regulations additional plant, equipment and resources shall be procured from external contractors using the Winter Maintenance Assistance Framework Contract.

<b>Document</b>	<b>Winter Service 2014/15</b>	<b>Revision</b>	<b>2</b>
<b>ARA Operational Plan &amp; Policy</b>	<b>Page 69 of 71</b>	<b>Date</b>	<b>21/01/2015</b>



## APPENDIX 11 – PROCESS FLOW CHART



Document	Winter Service 2014/15	Revision	2
ARA Operational Plan & Policy	Page 70 of 71	Date	21/01/2015



Burns House, Burns Statue Square Ayr KA7 1UT. Telephone 01563 503160  
The Johnnie Walker Bond, 15 Strand Street, Kilmarnock KA1 1HU. Telephone 01563 503160  
[www.ayrshireroadsalliance.org](http://www.ayrshireroadsalliance.org)